

Data Path : Z:\voasrv\HPCHEM1\MSVOA_V\Data\VW032322\
 Data File : VW025131.D
 Acq On : 23 Mar 2022 14:46
 Operator : SY/MD
 Sample : N2044-12
 Misc : 25mL/MSVOA_V/WATER
 ALS Vial : 7 Sample Multiplier: 1

Instrument :
 MSVOA_V
 ClientSampleId :
 BFY35

Quant Time: Mar 24 01:16:32 2022
 Quant Method : Z:\voasrv\HPCHEM1\MSVOA_V\Method\SFAMVTR031522WMA.M
 Quant Title : TRACE VOA SFAM1.0
 QLast Update : Thu Mar 24 01:12:55 2022
 Response via : Initial Calibration

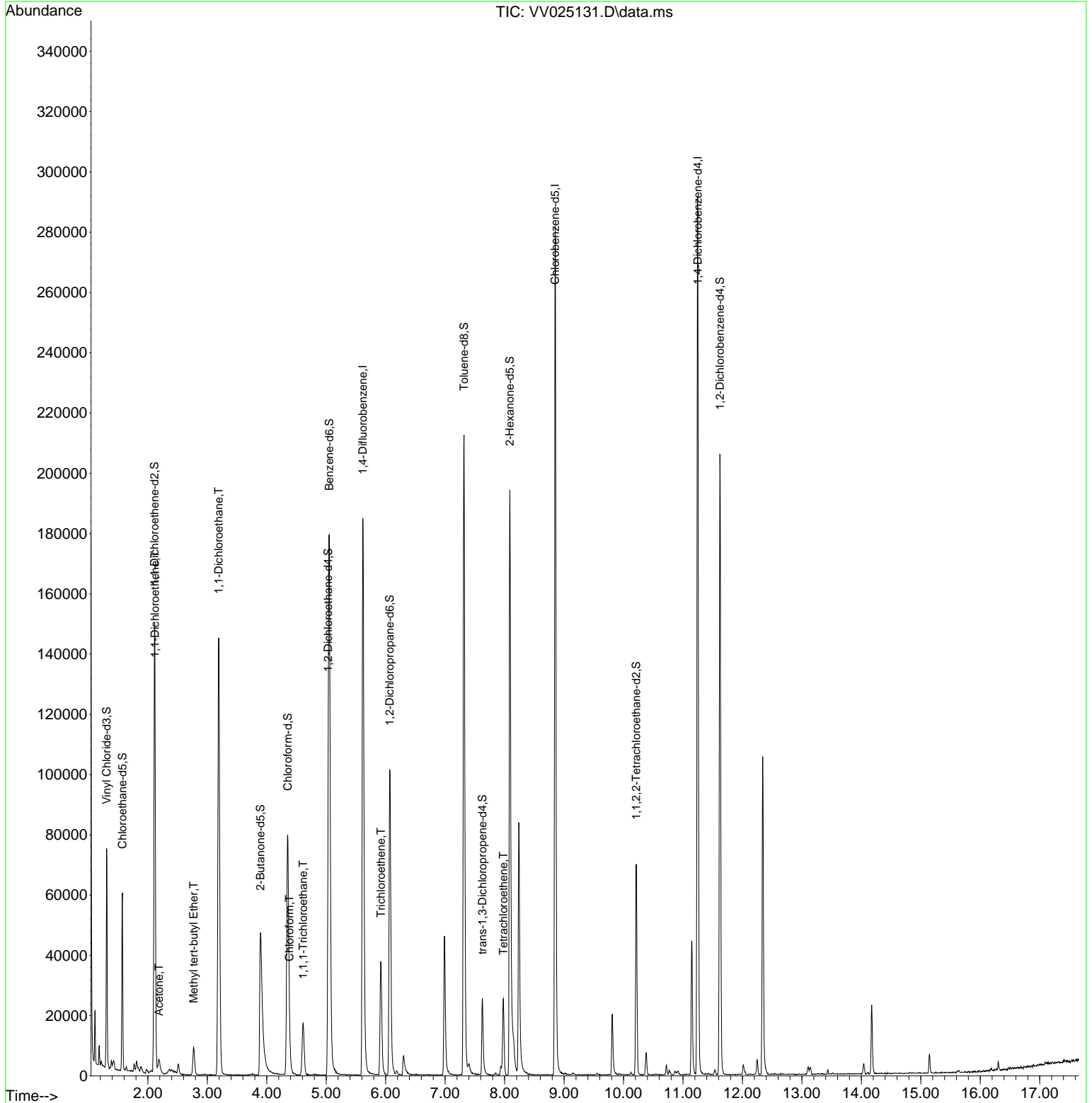
Compound	R.T.	QIon	Response	Conc	Units	Dev(Min)
Internal Standards						
1) 1,4-Difluorobenzene	5.616	114	169200	5.000	ug/L	0.00
28) Chlorobenzene-d5	8.850	117	158582	5.000	ug/L	0.00
58) 1,4-Dichlorobenzene-d4	11.249	152	75422	5.000	ug/L	0.00
System Monitoring Compounds						
4) Vinyl Chloride-d3	1.307	65	41658	3.119	ug/L	0.00
Spiked Amount	5.000	Range 40 - 130	Recovery	=	62.400%	
7) Chloroethane-d5	1.571	69	36983	3.781	ug/L	0.00
Spiked Amount	5.000	Range 65 - 130	Recovery	=	75.600%	
11) 1,1-Dichloroethene-d2	2.111	63	65649	3.041	ug/L	0.00
Spiked Amount	5.000	Range 60 - 125	Recovery	=	60.800%	
20) 2-Butanone-d5	3.892	46	91243	56.519	ug/L	-0.02
Spiked Amount	50.000	Range 40 - 130	Recovery	=	113.040%	
24) Chloroform-d	4.352	84	86963	3.925	ug/L	0.00
Spiked Amount	5.000	Range 70 - 125	Recovery	=	78.600%	
26) 1,2-Dichloroethane-d4	5.034	65	39385	4.252	ug/L	0.00
Spiked Amount	5.000	Range 70 - 130	Recovery	=	85.000%	
32) Benzene-d6	5.050	84	176007	3.826	ug/L	0.00
Spiked Amount	5.000	Range 70 - 125	Recovery	=	76.600%	
36) 1,2-Dichloropropane-d6	6.069	67	54018	4.083	ug/L	0.00
Spiked Amount	5.000	Range 60 - 140	Recovery	=	81.600%	
41) Toluene-d8	7.317	98	148237	3.536	ug/L	0.00
Spiked Amount	5.000	Range 70 - 130	Recovery	=	70.800%	
43) trans-1,3-Dichloroprop...	7.625	79	17118	3.712	ug/L	0.00
Spiked Amount	5.000	Range 55 - 130	Recovery	=	74.200%	
46) 2-Hexanone-d5	8.088	63	72984	46.399	ug/L	0.00
Spiked Amount	50.000	Range 45 - 130	Recovery	=	92.800%	
56) 1,1,2,2-Tetrachloroeth...	10.214	84	34723	4.462	ug/L	0.00
Spiked Amount	5.000	Range 65 - 120	Recovery	=	89.200%	
66) 1,2-Dichlorobenzene-d4	11.622	152	52833	4.138	ug/L	0.00
Spiked Amount	5.000	Range 80 - 120	Recovery	=	82.800%	
Target Compounds						
12) 1,1-Dichloroethene	2.121	96	20316	1.885	ug/L #	65
13) Acetone	2.188	43	7845	7.266	ug/L	83
17) Methyl tert-butyl Ether	2.770	73	9554	0.407	ug/L	97
19) 1,1-Dichloroethane	3.191	63	150249	6.806	ug/L	98
25) Chloroform	4.381	83	6039	0.263	ug/L	84
29) 1,1,1-Trichloroethane	4.609	97	15051	0.744	ug/L	100
34) Trichloroethene	5.918	95	13756	1.002	ug/L	96
47) Tetrachloroethene	7.979	164	5612	0.581	ug/L	96

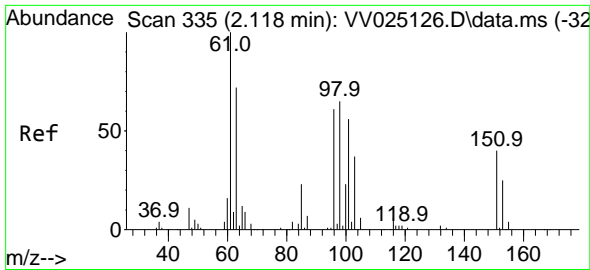
(#) = qualifier out of range (m) = manual integration (+) = signals summed

Data Path : Z:\voasrv\HPCHEM1\MSVOA_V\Data\VV032322\
 Data File : VV025131.D
 Acq On : 23 Mar 2022 14:46
 Operator : SY/MD
 Sample : N2044-12
 Misc : 25mL/MSVOA_V/WATER
 ALS Vial : 7 Sample Multiplier: 1

Instrument :
 MSVOA_V
ClientSampleId :
 BFY35

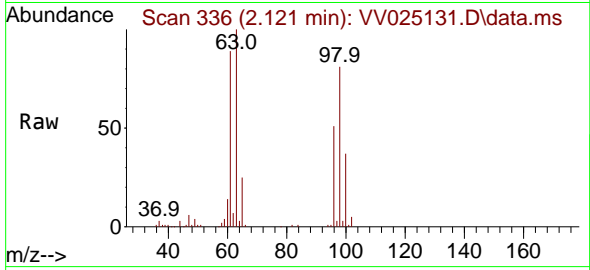
Quant Time: Mar 24 01:16:32 2022
 Quant Method : Z:\voasrv\HPCHEM1\MSVOA_V\Method\SFAMVTR031522WMA.M
 Quant Title : TRACE VOA SFAM1.0
 QLast Update : Thu Mar 24 01:12:55 2022
 Response via : Initial Calibration



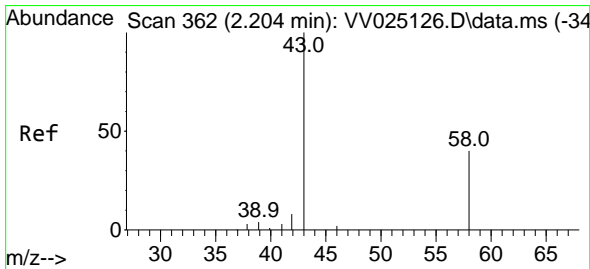
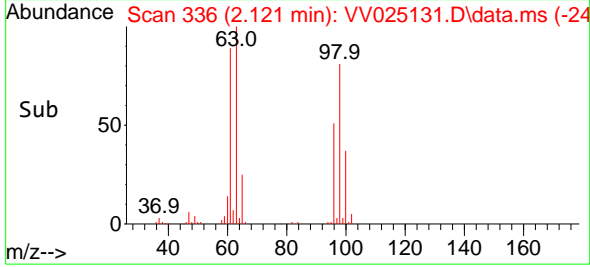
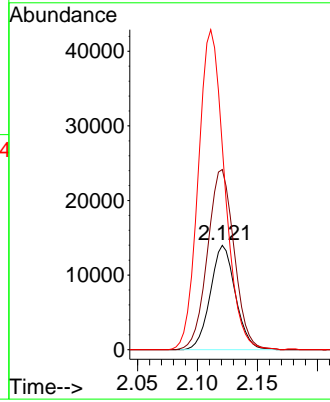


#12
 1,1-Dichloroethene
 Concen: 1.885 ug/L
 RT: 2.121 min Scan# 31
 Delta R.T. 0.003 min
 Lab File: VV025131.D
 Acq: 23 Mar 2022 14:46

Instrument :
 MSVOA_V
 ClientSampleId :
 BFY35

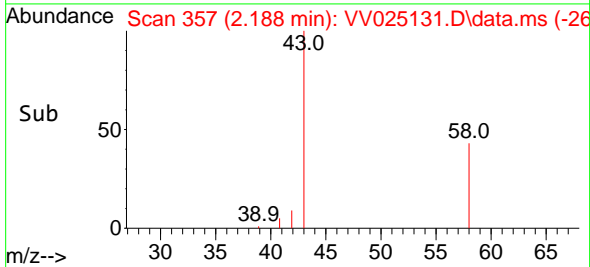
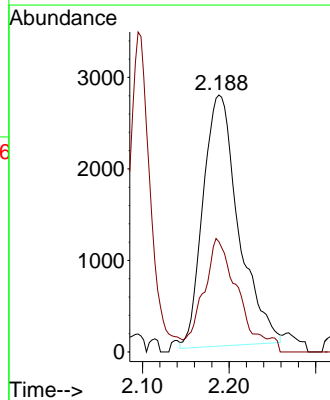
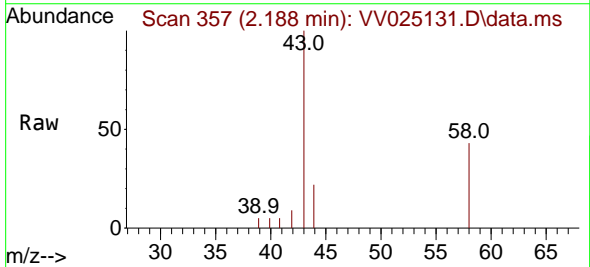


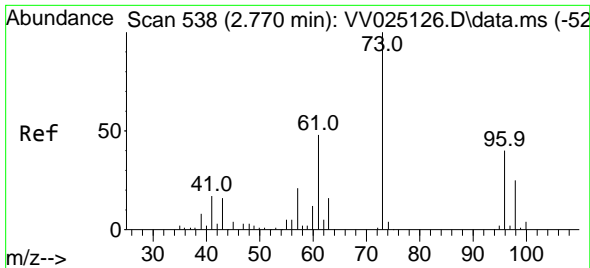
Tgt Ion: 96 Resp: 20316
 Ion Ratio Lower Upper
 96 100
 61 172.8 113.0 209.9
 63 195.2 82.1 152.5#



#13
 Acetone
 Concen: 7.266 ug/L
 RT: 2.188 min Scan# 357
 Delta R.T. -0.016 min
 Lab File: VV025131.D
 Acq: 23 Mar 2022 14:46

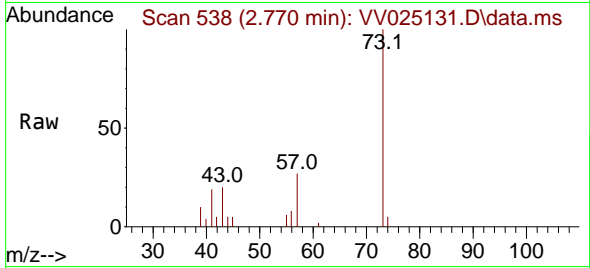
Tgt Ion: 43 Resp: 7845
 Ion Ratio Lower Upper
 43 100
 58 35.8 0.0 54.2



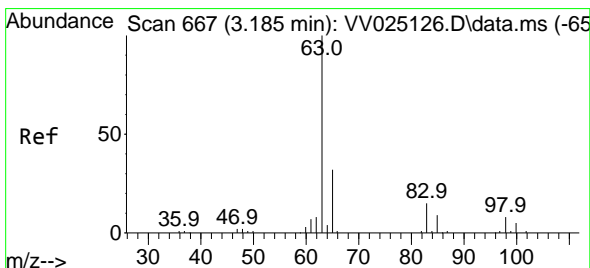
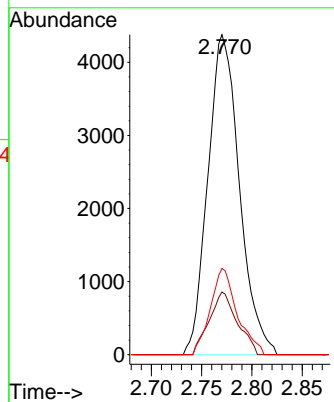
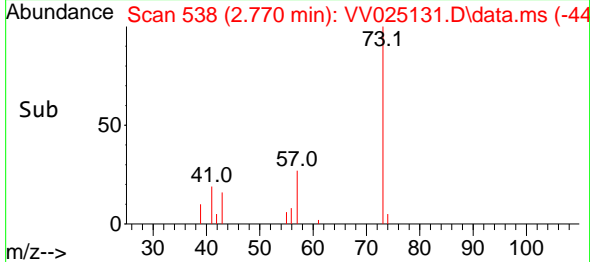


#17
 Methyl tert-butyl Ether
 Concen: 0.407 ug/L
 RT: 2.770 min Scan# 511
 Delta R.T. -0.000 min
 Lab File: VV025131.D
 Acq: 23 Mar 2022 14:46

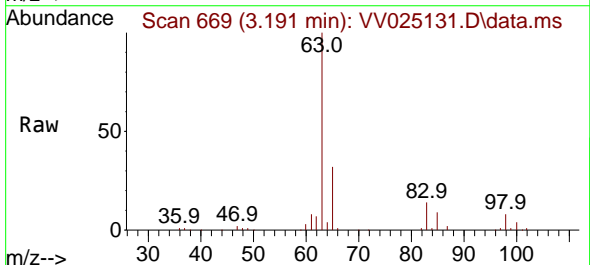
Instrument :
 MSVOA_V
 ClientSampleId :
 BFY35



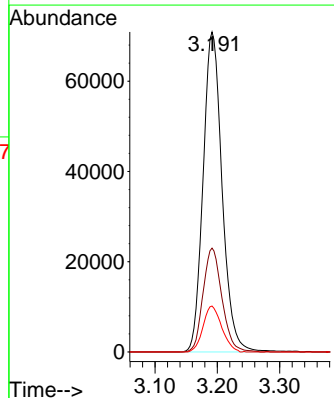
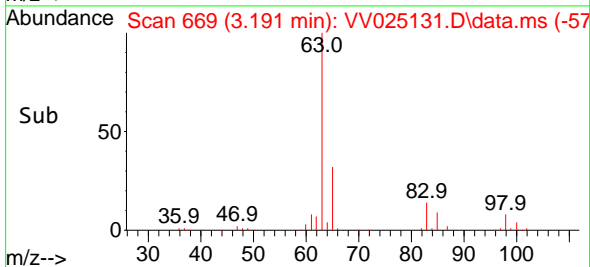
Tgt Ion: 73 Resp: 9554
 Ion Ratio Lower Upper
 73 100
 43 17.4 13.2 19.8
 57 22.9 16.7 25.1

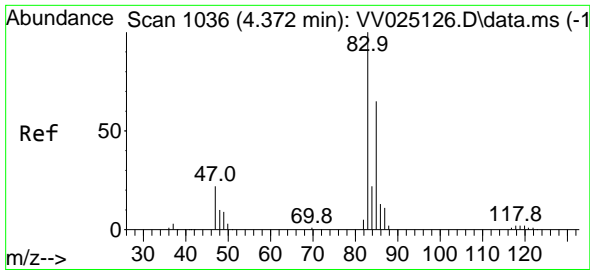


#19
 1,1-Dichloroethane
 Concen: 6.806 ug/L
 RT: 3.191 min Scan# 669
 Delta R.T. 0.006 min
 Lab File: VV025131.D
 Acq: 23 Mar 2022 14:46



Tgt Ion: 63 Resp: 150249
 Ion Ratio Lower Upper
 63 100
 65 32.5 22.2 41.2
 83 14.3 9.4 17.4

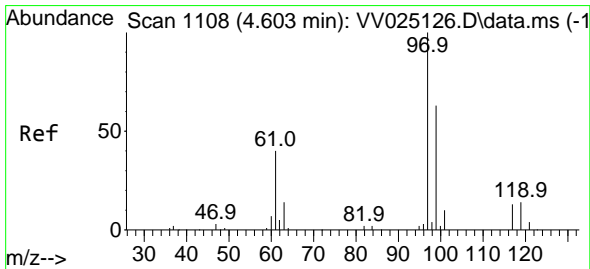
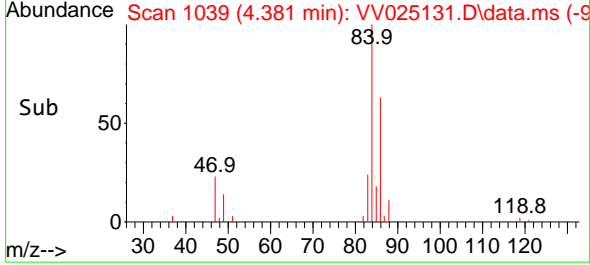
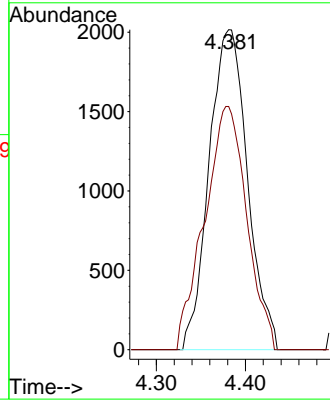
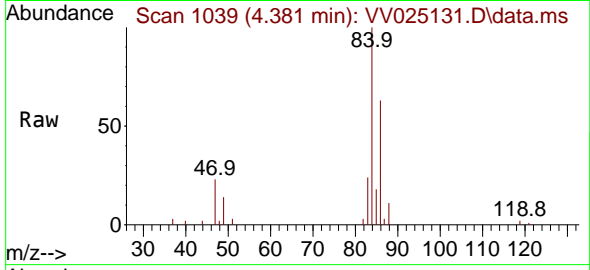




#25
 Chloroform
 Concen: 0.263 ug/L
 RT: 4.381 min Scan# 1109
 Delta R.T. 0.010 min
 Lab File: VV025131.D
 Acq: 23 Mar 2022 14:46

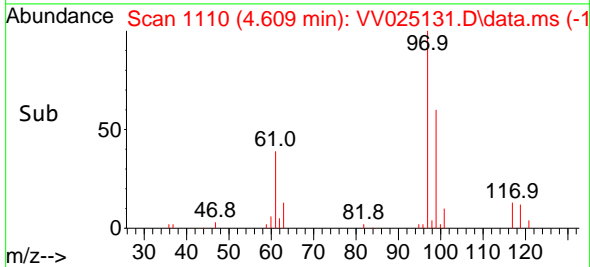
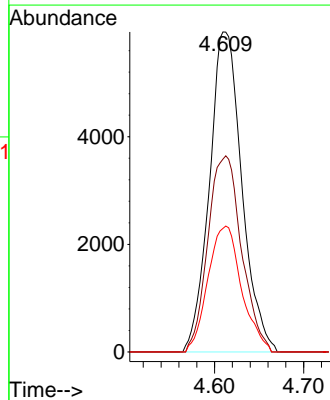
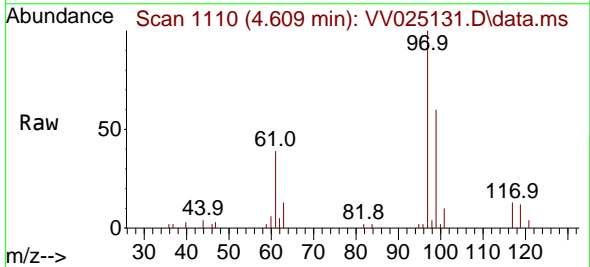
Instrument : MSVOA_V
 ClientSampleId : BFY35

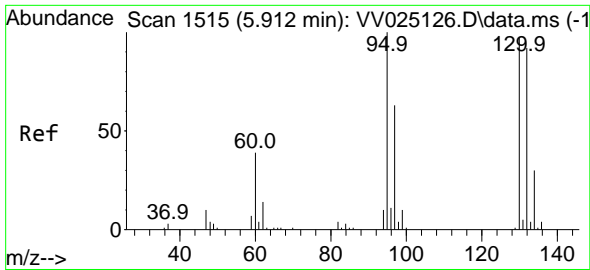
Tgt Ion: 83 Resp: 6039
 Ion Ratio Lower Upper
 83 100
 85 76.0 44.5 82.7



#29
 1,1,1-Trichloroethane
 Concen: 0.744 ug/L
 RT: 4.609 min Scan# 1110
 Delta R.T. 0.006 min
 Lab File: VV025131.D
 Acq: 23 Mar 2022 14:46

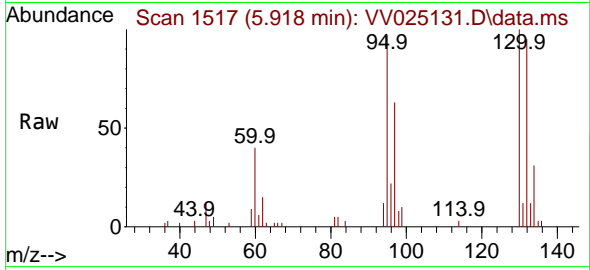
Tgt Ion: 97 Resp: 15051
 Ion Ratio Lower Upper
 97 100
 99 63.5 50.7 76.1
 61 40.8 32.4 48.6



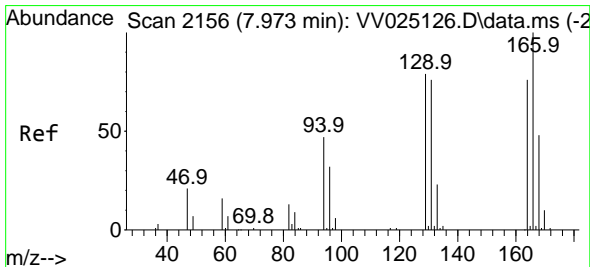
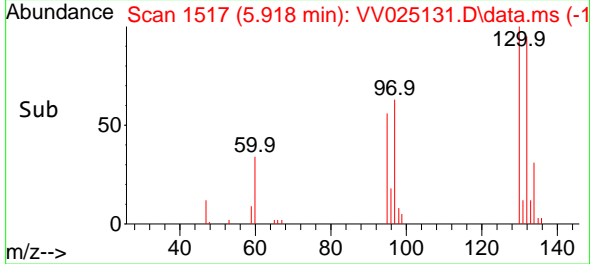
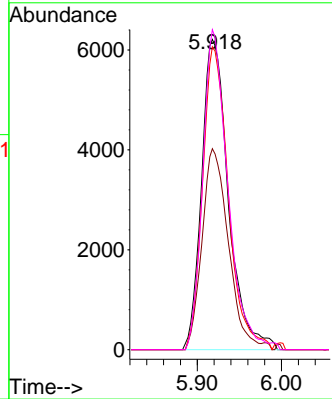


#34
 Trichloroethene
 Concen: 1.002 ug/L
 RT: 5.918 min Scan# 11
 Delta R.T. 0.006 min
 Lab File: VV025131.D
 Acq: 23 Mar 2022 14:46

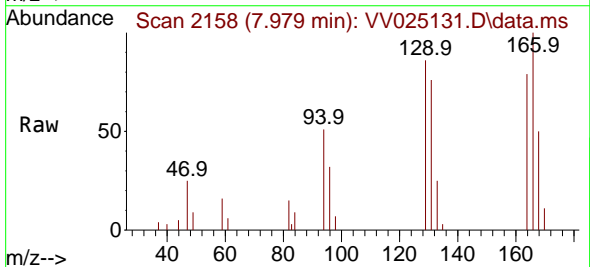
Instrument :
 MSVOA_V
 ClientSampleId :
 BFY35



Tgt Ion: 95 Resp: 13756
 Ion Ratio Lower Upper
 95 100
 97 64.8 44.5 82.7
 132 97.6 66.5 123.5
 130 103.2 68.0 126.2



#47
 Tetrachloroethene
 Concen: 0.581 ug/L
 RT: 7.979 min Scan# 2158
 Delta R.T. 0.006 min
 Lab File: VV025131.D
 Acq: 23 Mar 2022 14:46



Tgt Ion: 164 Resp: 5612
 Ion Ratio Lower Upper
 164 100
 129 109.8 70.3 130.7
 131 96.9 69.4 129.0
 166 127.0 90.3 167.7

