

Data File : VV009865.D
 Acq On : 25 Mar 2019 17:08
 Operator : SY/MD
 Sample : K2016-15 20X
 Misc : 5.0mL/MSVOA_V/WATER
 ALS Vial : 15 Sample Multiplier: 1

Instrument :
 MSVOA_V
 ClientSampled :
 C09D5

Quant Time: Mar 26 07:17:21 2019
 Quant Method : Z:\VOASRV\HPCHEM1\MSVOA_V\METHOD\SOMVLM032519WMA.M
 Quant Title : VOC Analysis
 QLast Update : Tue Mar 26 07:13:38 2019
 Response via : Initial Calibration

Internal Standards	R.T.	QIon	Response	Conc	Units	Dev(Min)
1) 1,4-Difluorobenzene	5.67	114	174528	50.00	ug/L	0.00
28) Chlorobenzene-d5	8.90	117	174824	50.00	ug/L	0.00
60) 1,4-Dichlorobenzene-d4	11.30	152	74251	50.00	ug/L	0.00

System Monitoring Compounds

4) Vinyl Chloride-d3	1.32	65	83748	47.00	ug/L	0.00
Spiked Amount	50.000	Range	60 - 135	Recovery	=	94.00%
7) Chloroethane-d5	1.56	69	95042	47.40	ug/L	0.00
Spiked Amount	50.000	Range	70 - 130	Recovery	=	94.80%
11) 1,1-Dichloroethene-d2	2.13	63	182685	34.78	ug/L	0.00
Spiked Amount	50.000	Range	60 - 125	Recovery	=	69.56%
21) 2-Butanone-d5	3.93	46	75317	94.69	ug/L	0.00
Spiked Amount	100.000	Range	40 - 130	Recovery	=	94.69%
24) Chloroform-d	4.40	84	111292	44.91	ug/L	0.00
Spiked Amount	50.000	Range	70 - 125	Recovery	=	89.82%
26) 1,2-Dichloroethane-d4	5.08	65	76604	46.25	ug/L	0.00
Spiked Amount	50.000	Range	70 - 125	Recovery	=	92.50%
32) Benzene-d6	5.10	84	235464	49.62	ug/L	0.00
Spiked Amount	50.000	Range	70 - 125	Recovery	=	99.24%
36) 1,2-Dichloropropane-d6	6.12	67	73797	50.41	ug/L	0.00
Spiked Amount	50.000	Range	70 - 120	Recovery	=	100.82%
41) Toluene-d8	7.36	98	209611	45.11	ug/L	0.00
Spiked Amount	50.000	Range	80 - 120	Recovery	=	90.22%
43) trans-1,3-Dichloropropene-	7.66	79	27321	40.86	ug/L	0.00
Spiked Amount	50.000	Range	60 - 125	Recovery	=	81.72%
47) 2-Hexanone-d5	8.14	63	55553	92.58	ug/L	0.00
Spiked Amount	100.000	Range	45 - 130	Recovery	=	92.58%
57) 1,1,2,2-Tetrachloroethane-	10.26	84	98921	41.64	ug/L	0.00
Spiked Amount	50.000	Range	65 - 120	Recovery	=	83.28%
64) 1,2-Dichlorobenzene-d4	11.68	152	81011	47.09	ug/L	0.00
Spiked Amount	50.000	Range	80 - 120	Recovery	=	94.18%

Target Compounds

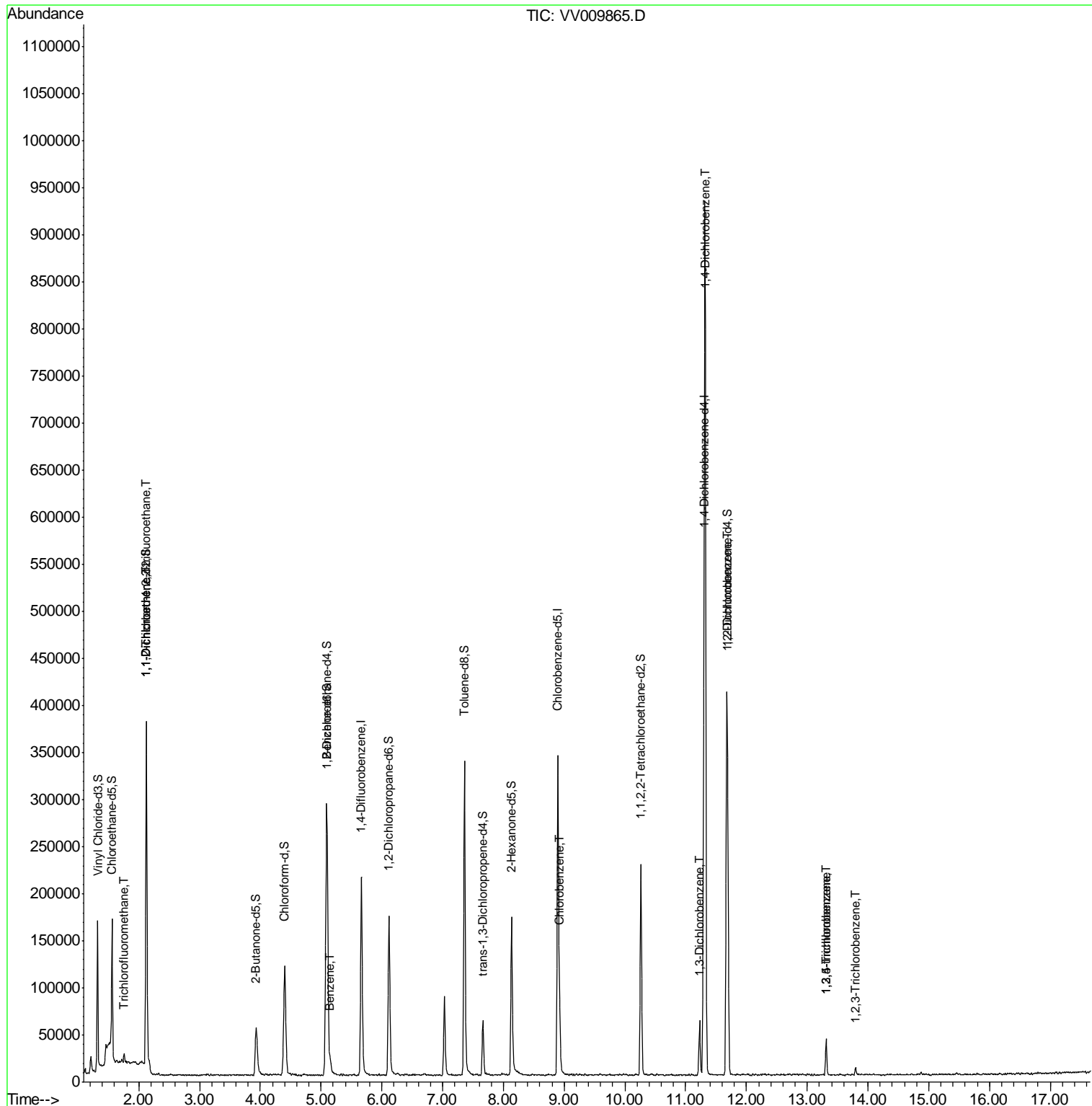
						Qvalue
9) Trichlorofluoromethane	1.76	101	3025	0.620	ug/L	92
10) 1,1,2-Trichloro-1,2,2-trif	2.13	101	1660	0.620	ug/L #	25
12) 1,1-Dichloroethene	2.13	96	1631	0.688	ug/L #	1
33) Benzene	5.15	78	9838	1.928	ug/L	100
51) Chlorobenzene	8.93	112	30795	7.964	ug/L	98
62) 1,3-Dichlorobenzene	11.23	146	20313	7.986	ug/L	90
63) 1,4-Dichlorobenzene	11.32	146	324400	121.649	ug/L	99
65) 1,2-Dichlorobenzene	11.69	146	94314	35.100	ug/L	98
67) 1,3,5-Trichlorobenzene	13.31	180	10139	5.843	ug/L	96
68) 1,2,4-trichlorobenzene	13.31	180	10139	7.333	ug/L	93
70) 1,2,3-Trichlorobenzene	13.80	180	2054	1.469	ug/L	91

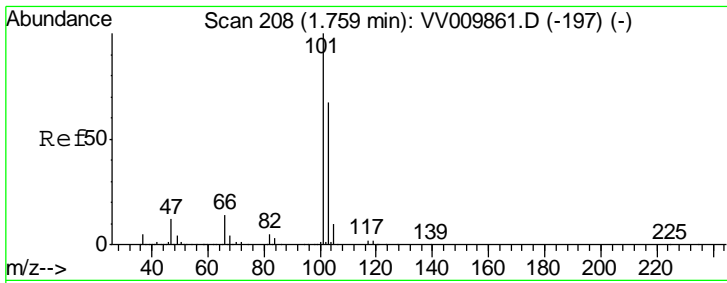
(#) = qualifier out of range (m) = manual integration (+) = signals summed

Data File : VV009865.D
Acq On : 25 Mar 2019 17:08
Operator : SY/MD
Sample : K2016-15 20X
Misc : 5.0mL/MSVOA_V/WATER
ALS Vial : 15 Sample Multiplier: 1

Instrument :
MSVOA_V
ClientSampleId :
C09D5

Quant Time: Mar 26 07:17:21 2019
Quant Method : Z:\VOASRV\HPCHEM1\MSVOA_V\METHOD\SOMVLM032519WMA.M
Quant Title : VOC Analysis
QLast Update : Tue Mar 26 07:13:38 2019
Response via : Initial Calibration

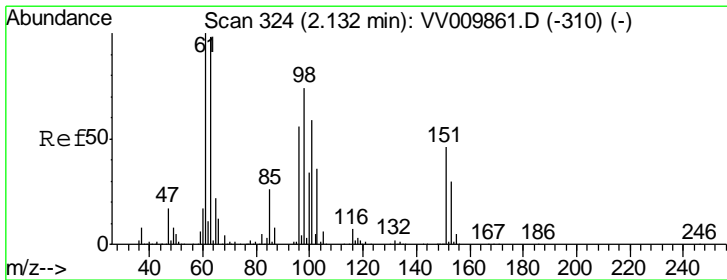
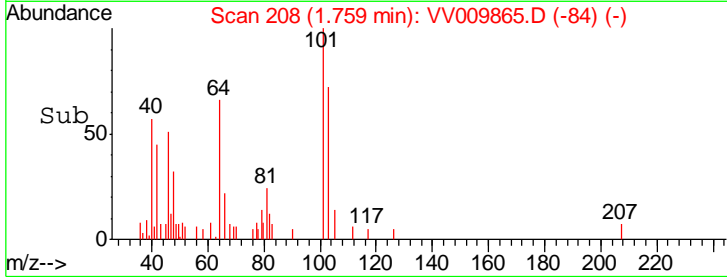
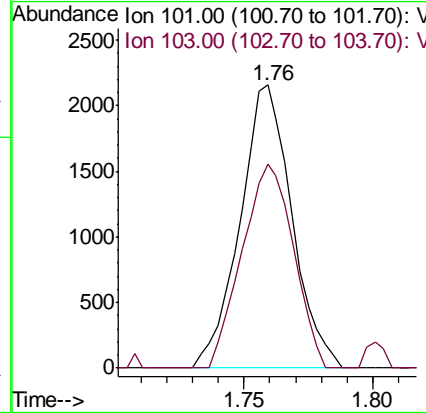
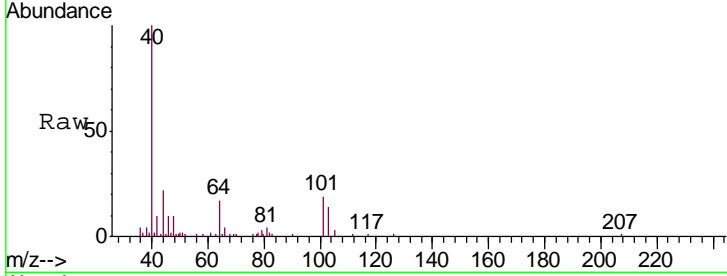




#9
 Trichlorofluoromethane
 Concen: 0.620 ug/L
 RT: 1.76 min Scan# 208
 Delta R.T. 0.00 min
 Lab File: VV009865.D
 Acq: 25 Mar 2019 17:08

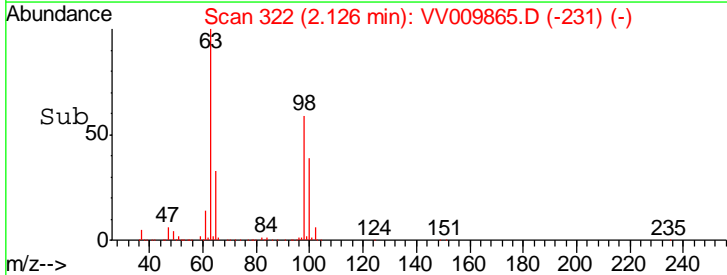
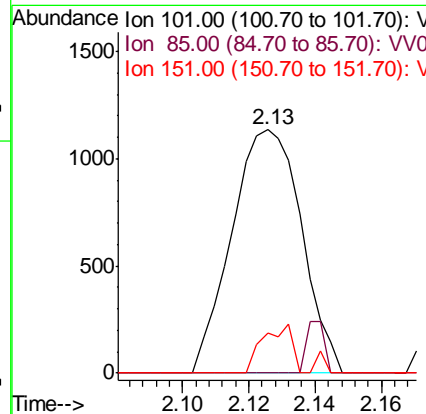
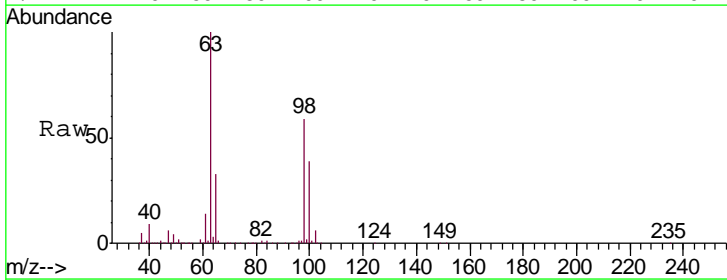
Instrument :
 MSVOA_V
 ClientSampled :
 C09D5

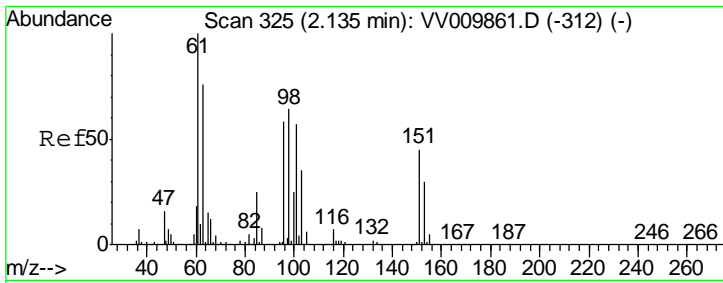
Tgt Ion:101 Resp: 3025
 Ion Ratio Lower Upper
 101 100
 103 71.4 52.2 78.4



#10
 1,1,2-Trichloro-1,2,2-trifluoroethane
 Concen: 0.620 ug/L
 RT: 2.13 min Scan# 322
 Delta R.T. -0.01 min
 Lab File: VV009865.D
 Acq: 25 Mar 2019 17:08

Tgt Ion:101 Resp: 1660
 Ion Ratio Lower Upper
 101 100
 85 5.5 37.0 55.4#
 151 8.4 65.4 98.2#

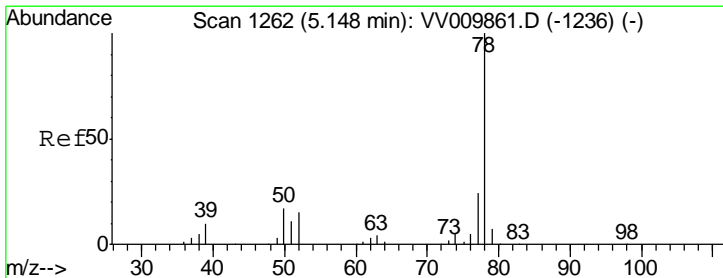
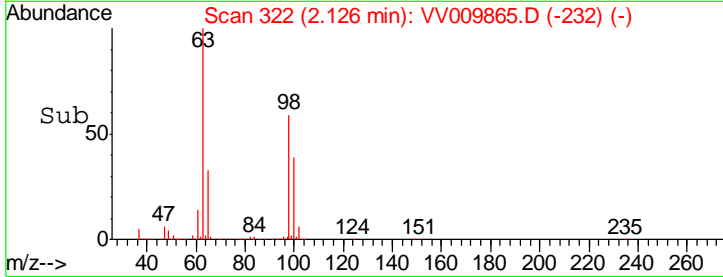
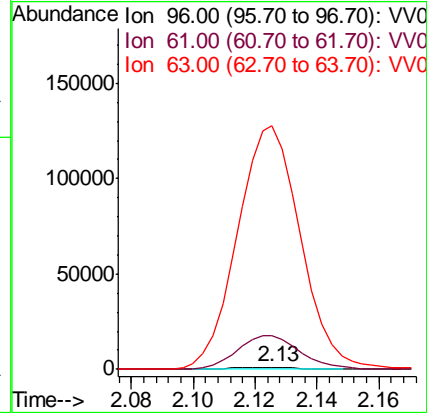
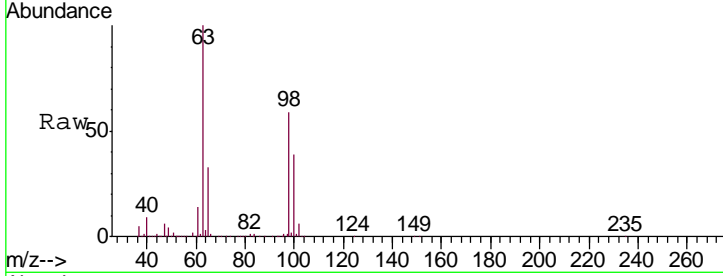




#12
 1,1-Dichloroethene
 Concen: 0.688 ug/L
 RT: 2.13 min Scan# 322
 Delta R.T. -0.01 min
 Lab File: VV009865.D
 Acq: 25 Mar 2019 17:08

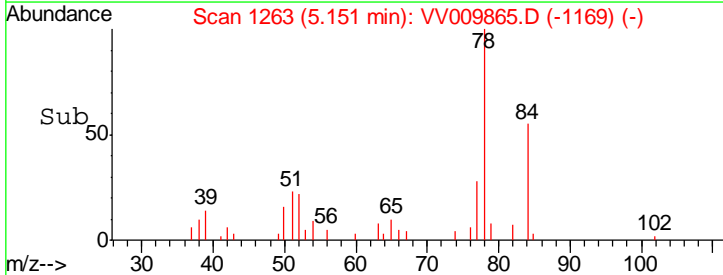
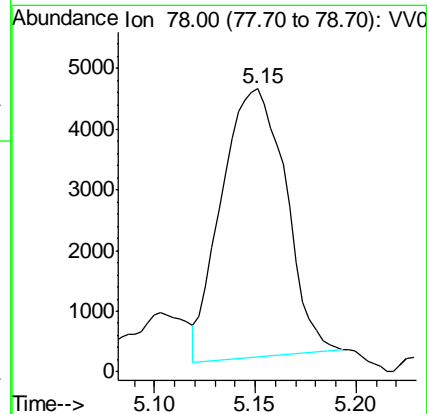
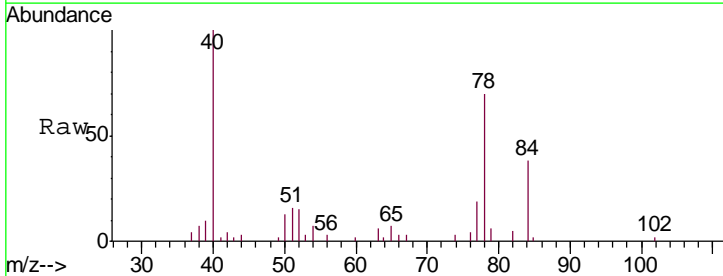
Instrument :
 MSVOA_V
 ClientSampled :
 C09D5

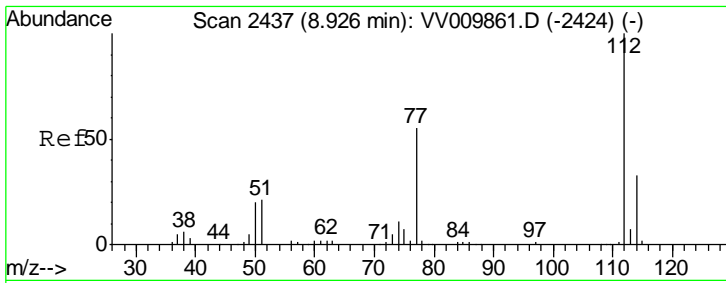
Tgt Ion: 96 Resp: 1631
 Ion Ratio Lower Upper
 96 100
 61 1766.9 125.3 232.7#
 63 12743.3 109.7 203.7#



#33
 Benzene
 Concen: 1.928 ug/L
 RT: 5.15 min Scan# 1263
 Delta R.T. 0.00 min
 Lab File: VV009865.D
 Acq: 25 Mar 2019 17:08

Tgt Ion: 78 Resp: 9838

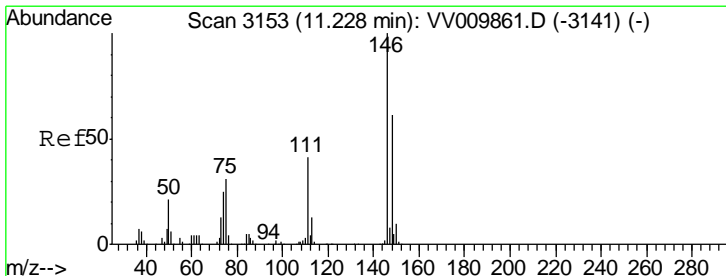
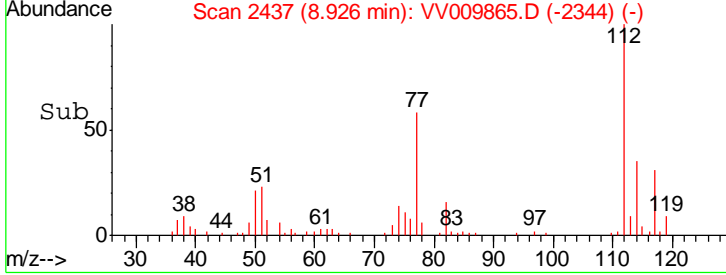
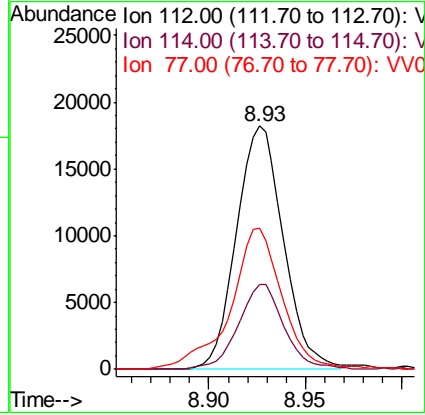
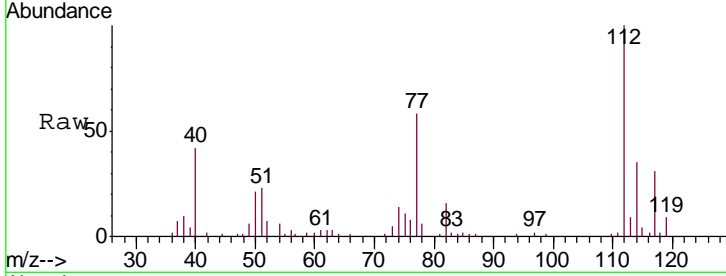




#51
 Chlorobenzene
 Concen: 7.964 ug/L
 RT: 8.93 min Scan# 2437
 Delta R.T. 0.00 min
 Lab File: VV009865.D
 Acq: 25 Mar 2019 17:08

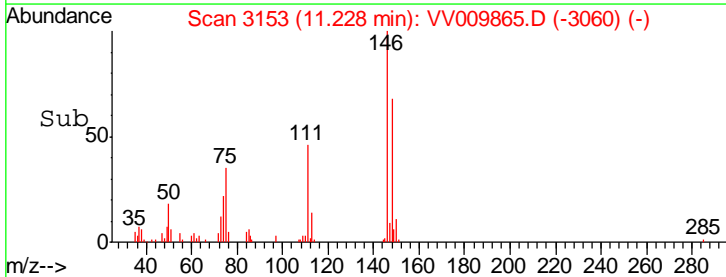
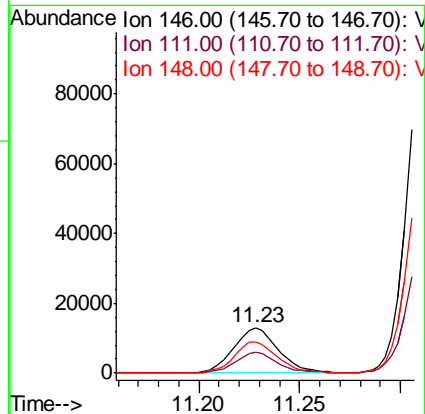
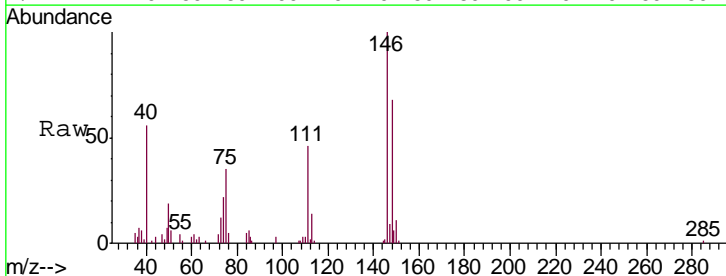
Instrument : MSVOA_V
 ClientSampled : C09D5

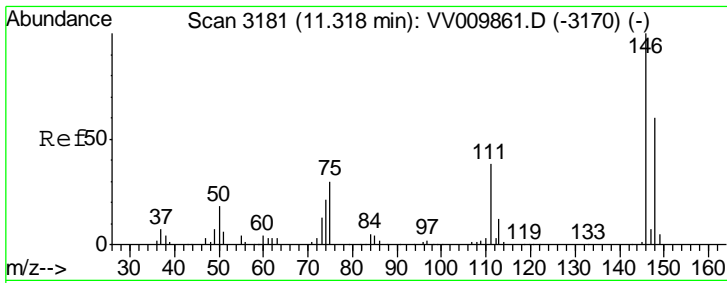
Tgt Ion	Resp	Lower	Upper
112	30795		
114	35.1	23.3	43.3
77	57.8	45.8	68.6



#62
 1,3-Dichlorobenzene
 Concen: 7.986 ug/L
 RT: 11.23 min Scan# 3153
 Delta R.T. 0.00 min
 Lab File: VV009865.D
 Acq: 25 Mar 2019 17:08

Tgt Ion	Resp	Lower	Upper
146	20313		
111	46.2	27.5	51.1
148	68.2	43.0	80.0

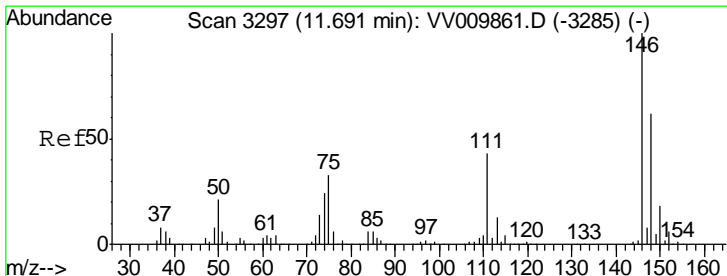
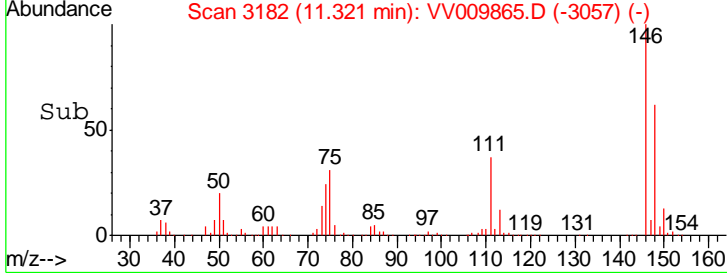
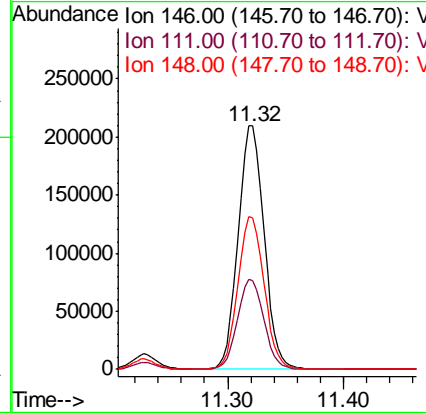
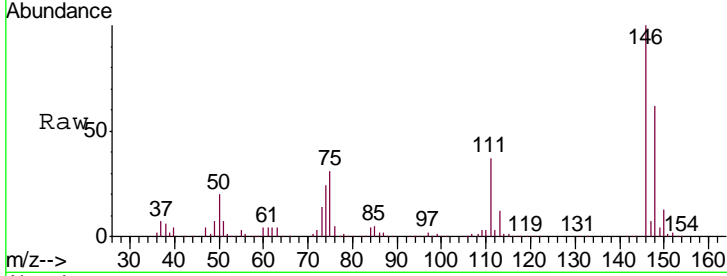




#63
 1,4-Dichlorobenzene
 Concen: 121.649 ug/L
 RT: 11.32 min Scan# 3182
 Delta R.T. 0.00 min
 Lab File: VV009865.D
 Acq: 25 Mar 2019 17:08

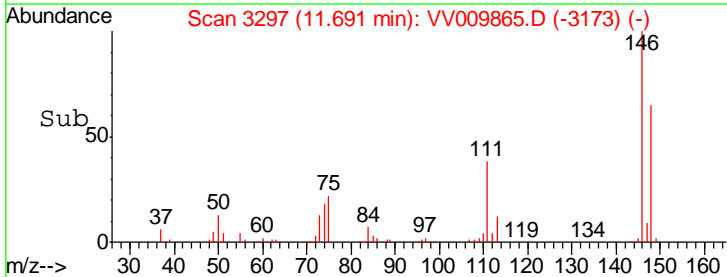
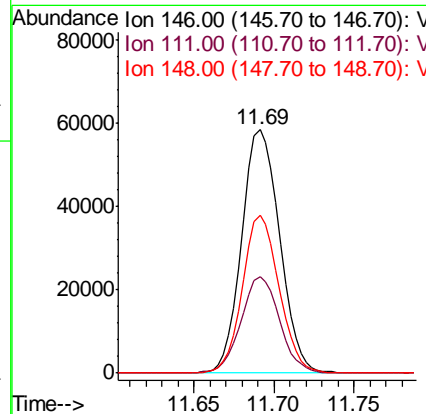
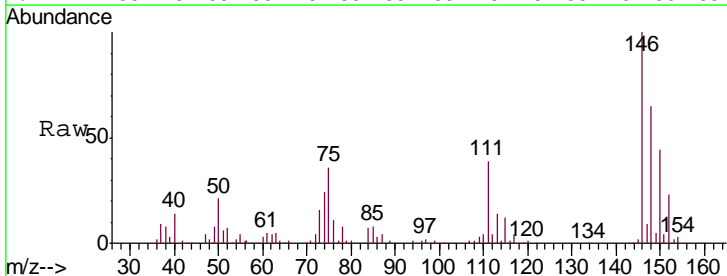
Instrument : MSVOA_V
 ClientSampled : C09D5

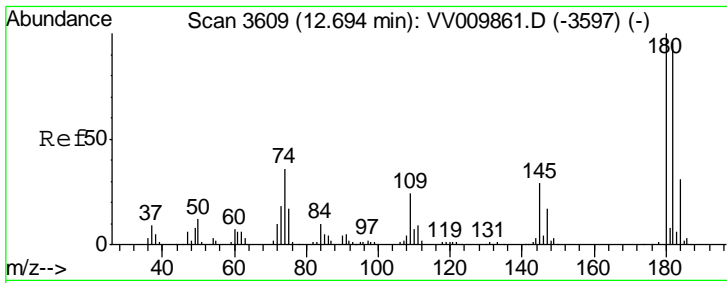
Tgt Ion	Resp	Lower	Upper
146	324400		
111	36.6	26.5	49.3
148	62.3	43.2	80.2



#65
 1,2-Dichlorobenzene
 Concen: 35.100 ug/L
 RT: 11.69 min Scan# 3297
 Delta R.T. 0.00 min
 Lab File: VV009865.D
 Acq: 25 Mar 2019 17:08

Tgt Ion	Resp	Lower	Upper
146	94314		
111	39.4	33.0	49.6
148	64.8	53.2	79.8

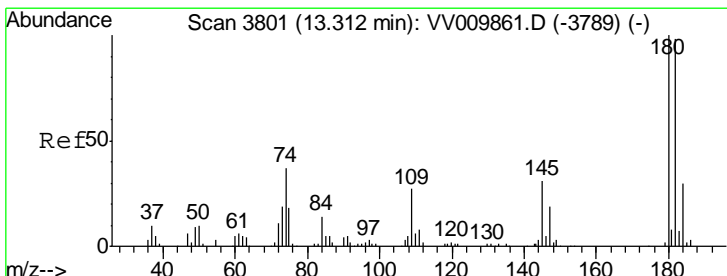
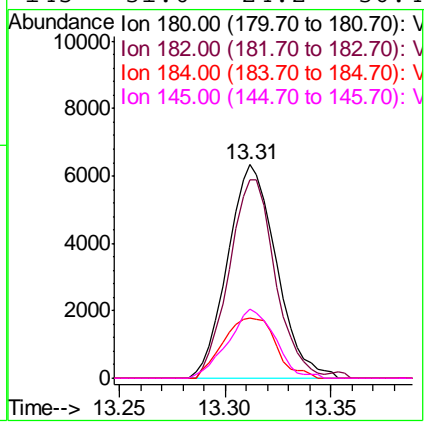
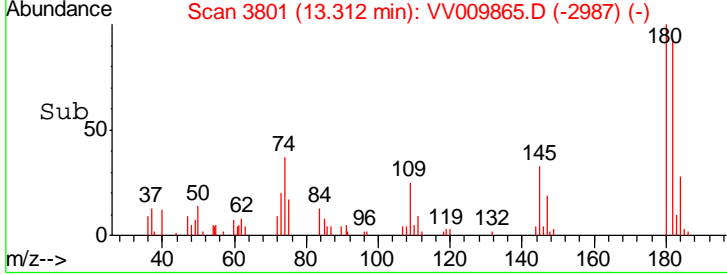
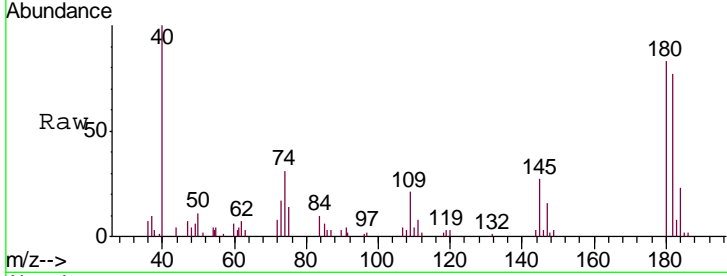




#67
 1,3,5-Trichlorobenzene
 Concen: 5.843 ug/L
 RT: 13.31 min Scan# 3801
 Delta R.T. 0.62 min
 Lab File: VV009865.D
 Acq: 25 Mar 2019 17:08

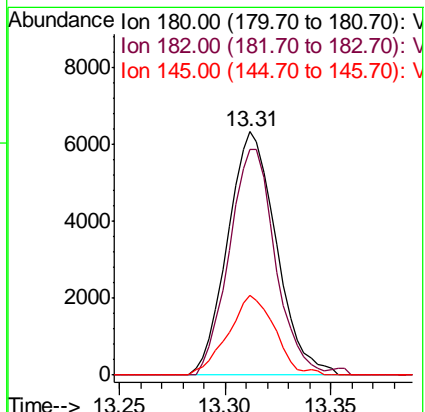
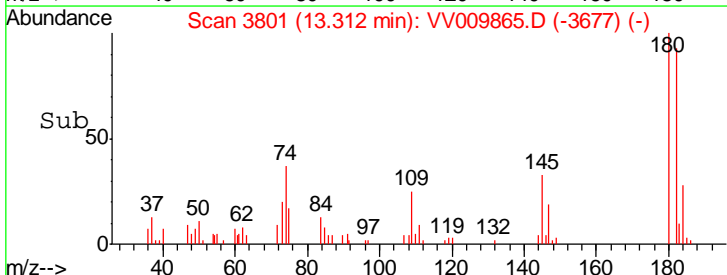
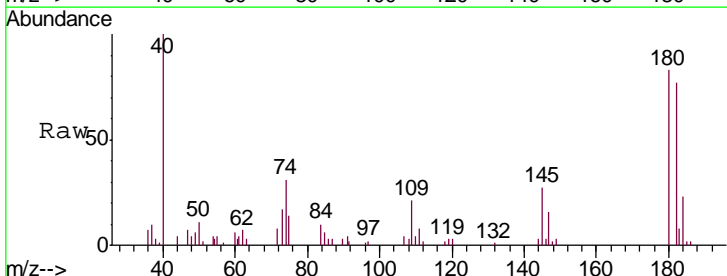
Instrument : MSVOA_V
 ClientSampled : C09D5

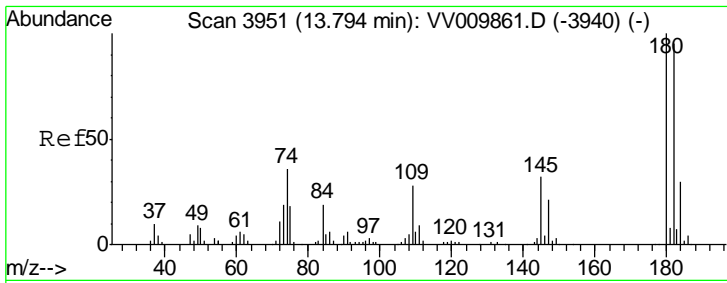
Tgt Ion	Resp	Lower	Upper
180	10139		
182	87.7	75.0	112.6
184	30.8	24.1	36.1
145	31.0	24.2	36.4



#68
 1,2,4-trichlorobenzene
 Concen: 7.333 ug/L
 RT: 13.31 min Scan# 3801
 Delta R.T. 0.00 min
 Lab File: VV009865.D
 Acq: 25 Mar 2019 17:08

Tgt Ion	Resp	Lower	Upper
180	10139		
182	87.7	77.1	115.7
145	31.0	24.3	36.5





#70
 1,2,3-Trichlorobenzene
 Concen: 1.469 ug/L
 RT: 13.80 min Scan# 3953
 Delta R.T. 0.01 min
 Lab File: VV009865.D
 Acq: 25 Mar 2019 17:08

Instrument :
 MSVOA_V
 ClientSampleID :
 C09D5

Tgt Ion	Resp	Lower	Upper
180	100		
182	104.2	75.6	113.4
145	34.7	24.8	37.2

