

Data Path : Z:\voasrv\HPCHEM1\MSVOA_V\DATA\VV032525\
 Data File : VV038741.D
 Acq On : 25 Mar 2025 08:58
 Operator : SY/MD
 Sample : VSTDCCC0.5
 Misc : 25.0mL/MSVOA_V/WATER
 ALS Vial : 2 Sample Multiplier: 1

Quant Time: Mar 25 09:27:51 2025
 Quant Method : Z:\voasrv\HPCHEM1\MSVOA_V\Method\SFAMVSIM032425.M
 Quant Title : TRACE VOA SOM01.0
 QLast Update : Mon Mar 24 15:12:15 2025
 Response via : Initial Calibration

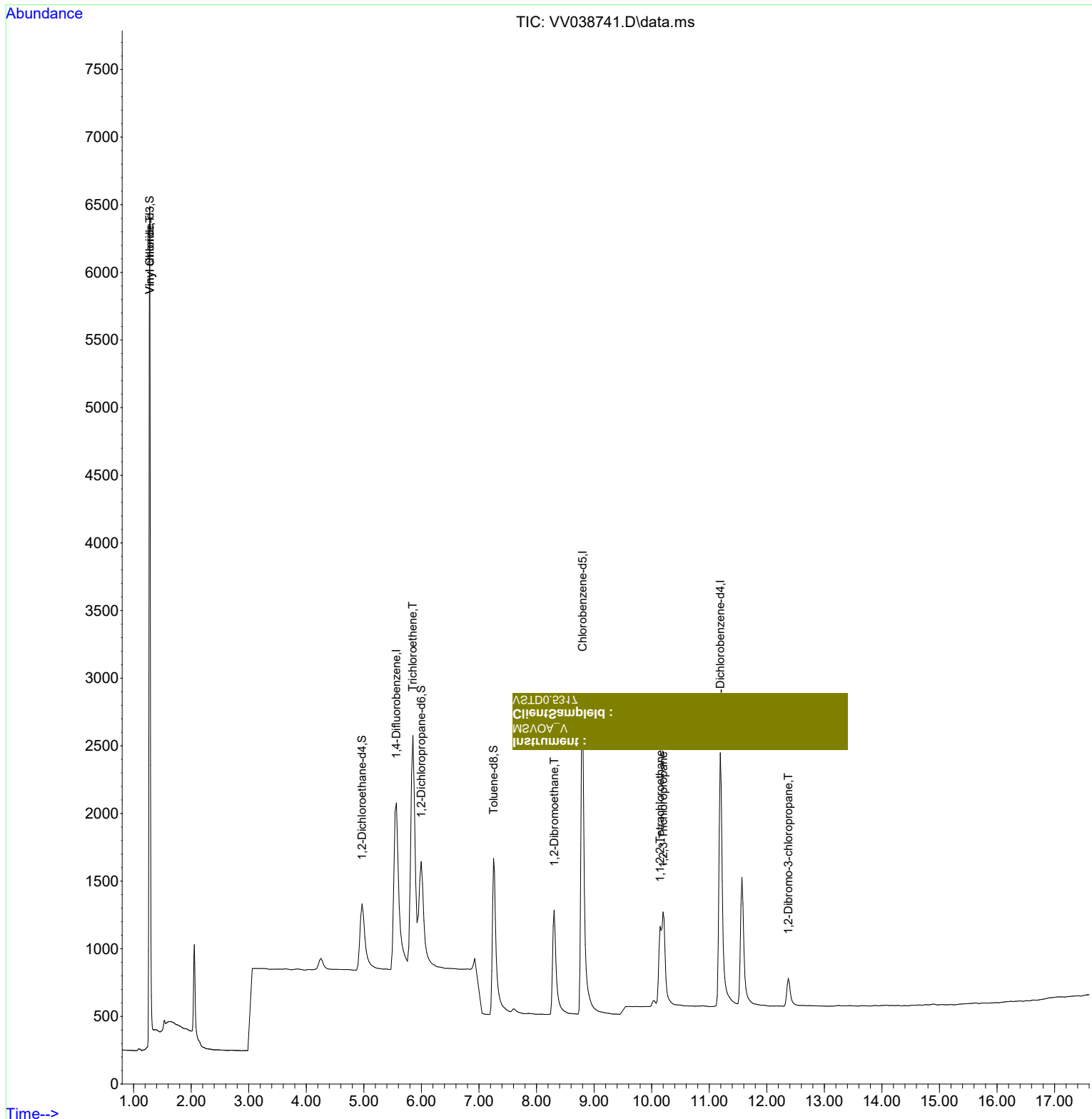
Compound	R.T.	QIon	Response	Conc	Units	Dev(Min)
Internal Standards						
1) 1,4-Difluorobenzene	5.566	114	5591	0.50	ug/L	0.00
5) Chlorobenzene-d5	8.800	117	5395	0.50	ug/L	0.00
11) 1,4-Dichlorobenzene-d4	11.191	152	2396	0.50	ug/L	0.00
System Monitoring Compounds						
2) Vinyl Chloride-d3	1.280	65	2679	0.51	ug/L	0.00
Spiked Amount	0.500	Range 40 - 130	Recovery	=	102.00%	
4) 1,2-Dichloroethane-d4	4.969	65	1321	0.50	ug/L	0.00
Spiked Amount	0.500	Range 70 - 130	Recovery	=	100.00%	
7) 1,2-Dichloropropane-d6	5.995	67	1588	0.48	ug/L	0.00
Spiked Amount	0.500	Range 60 - 140	Recovery	=	96.00%	
8) Toluene-d8	7.253	98	3055	0.49	ug/L	0.00
Spiked Amount	0.500	Range 70 - 130	Recovery	=	98.00%	
10) 1,1,2,2-Tetrachloroeth...	10.146	84	1296	0.46	ug/L	0.00
Spiked Amount	0.500	Range 65 - 120	Recovery	=	92.00%	
Target Compounds						
3) Vinyl chloride	1.280	62	4851	0.52	ug/L	97
6) Trichloroethene	5.852	95	2537	0.52	ug/L	99
9) 1,2-Dibromoethane	8.305	107	1742	0.50	ug/L #	98
12) 1,2,3-Trichloropropane	10.197	75	1498	0.51	ug/L	99
13) 1,2-Dibromo-3-chloropr...	12.374	75	313	0.48	ug/L	97

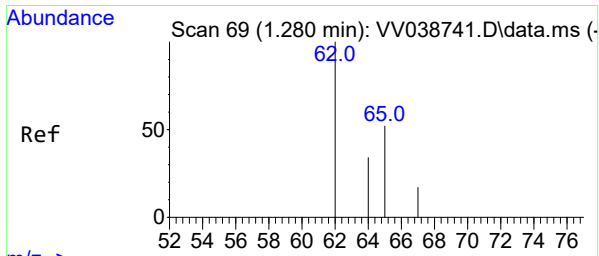
(#) = qualifier out of range (m) = manual integration (+) = signals summed

Instrument :
 VOA_V
 Sample :
 123021

Data Path : Z:\voasrv\HPCHEM1\MSVOA_V\DATA\VV032525\
 Data File : VV038741.D
 Acq On : 25 Mar 2025 08:58
 Operator : SY/MD
 Sample : VSTDCCC0.5
 Misc : 25.0mL/MSVOA_V/WATER
 ALS Vial : 2 Sample Multiplier: 1

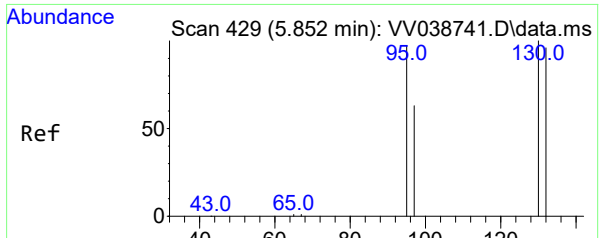
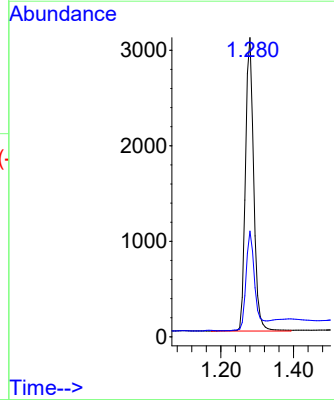
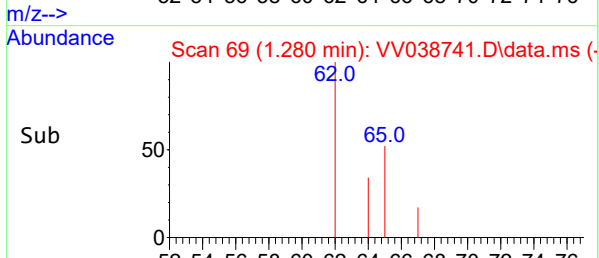
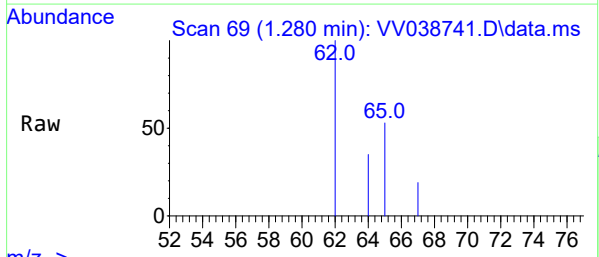
Quant Time: Mar 25 09:27:51 2025
 Quant Method : Z:\voasrv\HPCHEM1\MSVOA_V\Method\SFAMVSIM032425.M
 Quant Title : TRACE VOA SOM01.0
 QLast Update : Mon Mar 24 15:12:15 2025
 Response via : Initial Calibration





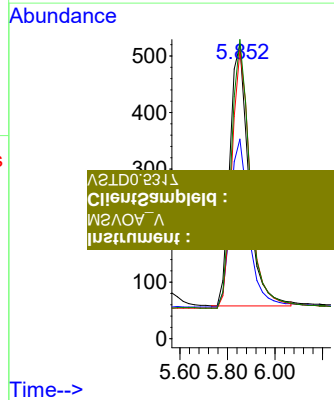
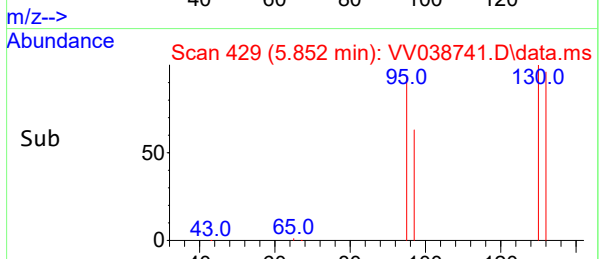
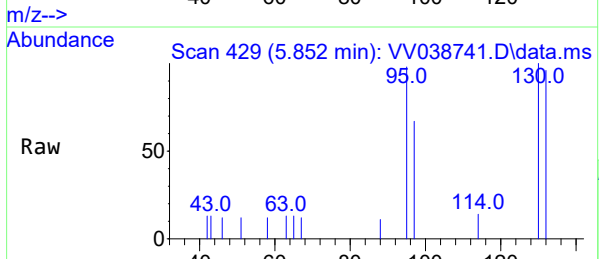
#3
 Vinyl chloride
 Concen: 0.52 ug/L
 RT: 1.280 min Scan# 69
 Delta R.T. -0.000 min
 Lab File: VV038741.D
 Acq: 25 Mar 2025 08:58

Tgt Ion: 62 Resp: 4851
 Ion Ratio Lower Upper
 62 100
 64 35.3 23.4 43.4

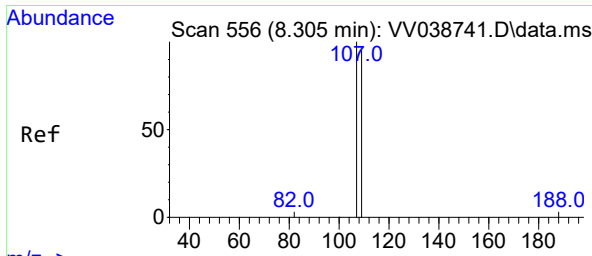


#6
 Trichloroethene
 Concen: 0.52 ug/L
 RT: 5.852 min Scan# 429
 Delta R.T. -0.000 min
 Lab File: VV038741.D
 Acq: 25 Mar 2025 08:58

Tgt Ion: 95 Resp: 2537
 Ion Ratio Lower Upper
 95 100
 97 67.9 46.5 86.5
 132 98.1 68.4 127.0
 130 101.7 71.6 133.0



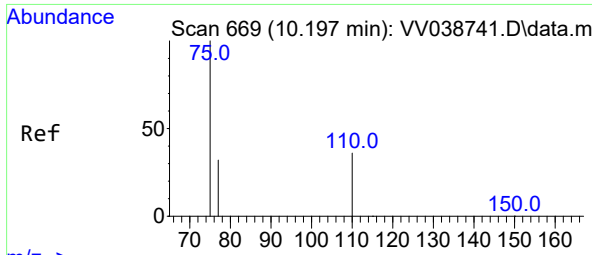
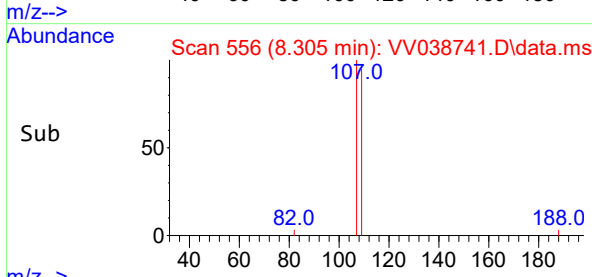
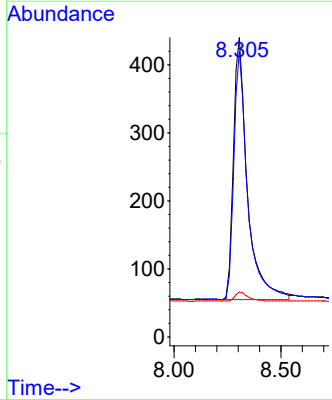
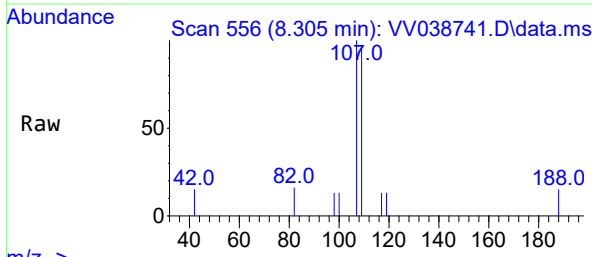
Client Sample ID :
 Instrument :



#9
 1,2-Dibromoethane
 Concen: 0.50 ug/L
 RT: 8.305 min Scan# 556
 Delta R.T. 0.000 min
 Lab File: VV038741.D
 Acq: 25 Mar 2025 08:58

Tgt Ion: 107 Resp: 1742

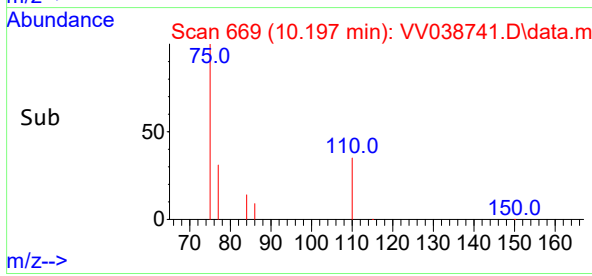
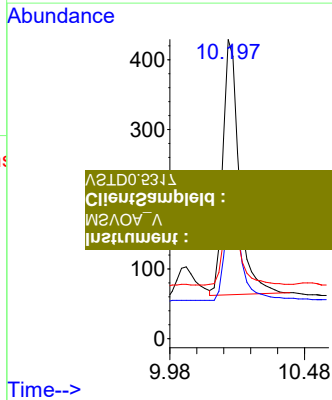
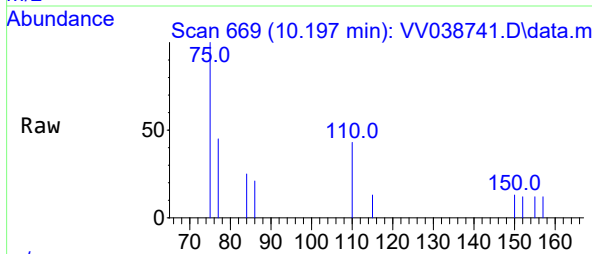
Ion	Ratio	Lower	Upper
107	100		
109	95.5	66.4	123.2
188	15.0	8.6	13.0#



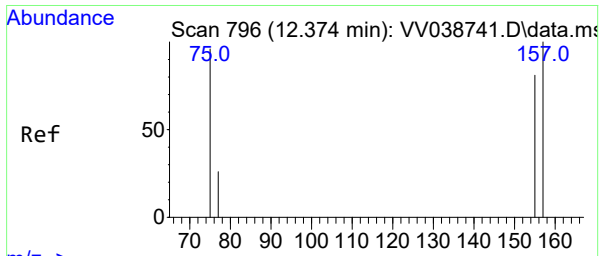
#12
 1,2,3-Trichloropropane
 Concen: 0.51 ug/L
 RT: 10.197 min Scan# 669
 Delta R.T. -0.000 min
 Lab File: VV038741.D
 Acq: 25 Mar 2025 08:58

Tgt Ion: 75 Resp: 1498

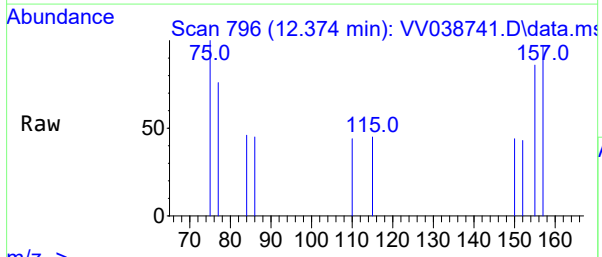
Ion	Ratio	Lower	Upper
75	100		
110	41.3	33.4	50.0
77	32.6	27.0	40.6



Client: [REDACTED]
 Instrument: [REDACTED]

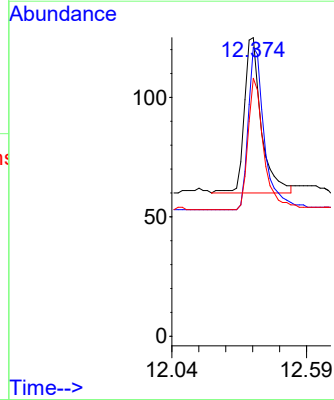
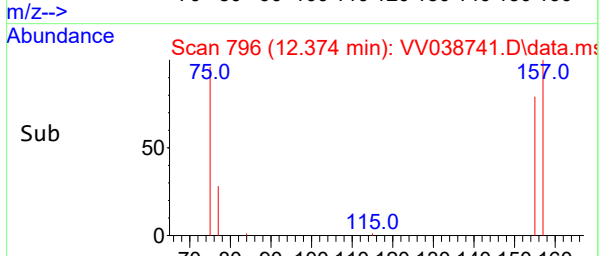


#13
 1,2-Dibromo-3-chloropropane
 Concen: 0.48 ug/L
 RT: 12.374 min Scan# 796
 Delta R.T. 0.017 min
 Lab File: VV038741.D
 Acq: 25 Mar 2025 08:58



Tgt Ion: 75 Resp: 313

Ion	Ratio	Lower	Upper
75	100		
157	96.8	81.1	121.7
155	86.4	70.3	105.5



Instrument :
 VAVO2M
 Client :
 123.0012V