

Data File : VV009909.D  
 Acq On : 26 Mar 2019 22:05  
 Operator : SY/MD  
 Sample : K2101-02  
 Misc : 5.72G/10mL/MSVOA\_V/SOIL  
 ALS Vial : 1 Sample Multiplier: 1

Instrument :  
 MSVOA\_V  
 Client Sampled :  
 BF0K0

Quant Time: Mar 27 01:49:25 2019  
 Quant Method : Z:\VOASRV\HPCHEM1\MSVOA\_V\METHOD\SOM2VLM032619S.M  
 Quant Title : VOC Analysis  
 QLast Update : Wed Mar 27 01:42:27 2019  
 Response via : Initial Calibration

Internal Standards	R.T.	QIon	Response	Conc	Units	Dev(Min)
1) 1,4-Difluorobenzene	5.66	114	157966	25.00	ug/L	0.00
28) Chlorobenzene-d5	8.89	117	156498	25.00	ug/L	0.00
60) 1,4-Dichlorobenzene-d4	11.30	152	64170	25.00	ug/L	0.00

System Monitoring Compounds

4) Vinyl Chloride-d3	1.32	65	82736	25.81	ug/L	0.00
Spiked Amount	25.000	Range	30 - 150	Recovery	=	103.24%
7) Chloroethane-d5	1.57	69	92567	26.74	ug/L	0.00
Spiked Amount	25.000	Range	30 - 150	Recovery	=	106.96%
10) 1,1-Dichloroethene-d2	2.13	63	176040	20.08	ug/L	0.00
Spiked Amount	25.000	Range	45 - 110	Recovery	=	80.32%
20) 2-Butanone-d5	4.04	46	157	0.26	ug/L	0.11
Spiked Amount	50.000	Range	20 - 135	Recovery	=	0.52%#
24) Chloroform-d	4.40	84	75248	18.70	ug/L	0.00
Spiked Amount	25.000	Range	40 - 150	Recovery	=	74.80%
26) 1,2-Dichloroethane-d4	5.08	65	68557	28.31	ug/L	0.00
Spiked Amount	25.000	Range	70 - 130	Recovery	=	113.24%
29) Benzene-d6	5.10	84	237082	28.85	ug/L	0.00
Spiked Amount	25.000	Range	20 - 135	Recovery	=	115.40%
33) 1,2-Dichloropropane-d6	6.12	67	72019	29.95	ug/L	0.00
Spiked Amount	25.000	Range	70 - 120	Recovery	=	119.80%
37) Toluene-d8	7.36	98	208525	26.81	ug/L	0.00
Spiked Amount	25.000	Range	30 - 130	Recovery	=	107.24%
38) trans-1,3-Dichloropropene-	7.66	79	23777	24.17	ug/L	0.00
Spiked Amount	25.000	Range	30 - 135	Recovery	=	96.68%
39) 2-Hexanone-d5	8.13	63	23610	52.61	ug/L	0.00
Spiked Amount	50.000	Range	20 - 135	Recovery	=	105.22%
48) 1,1,2,2-Tetrachloroethane-	10.26	84	58881	24.73	ug/L	0.00
Spiked Amount	25.000	Range	45 - 120	Recovery	=	98.92%
61) 1,2-Dichlorobenzene-d4	11.67	152	69338	28.38	ug/L	0.00
Spiked Amount	25.000	Range	75 - 120	Recovery	=	113.52%

Target Compounds

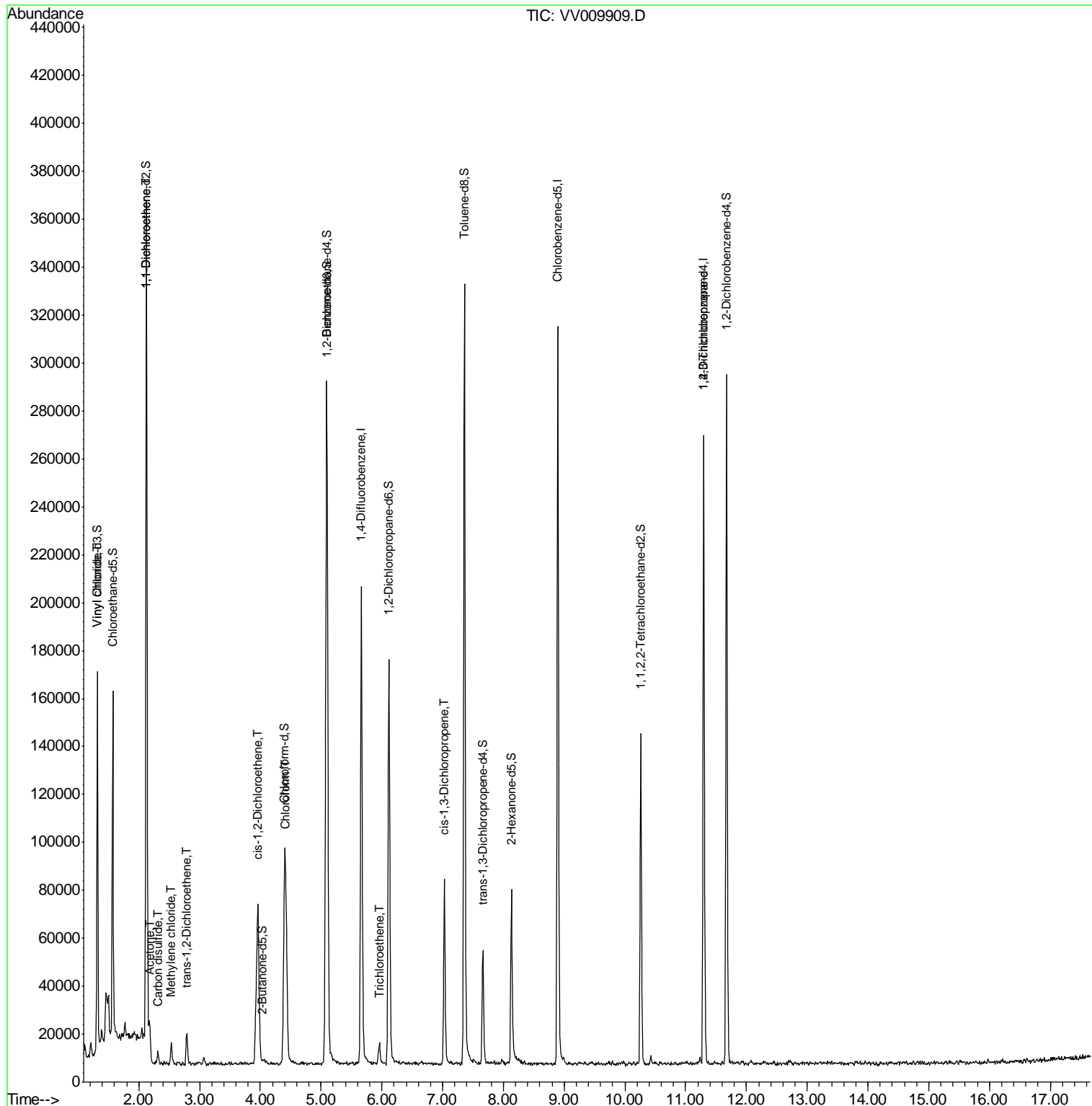
Target Compounds	R.T.	QIon	Response	Conc	Units	Qvalue
5) Vinyl chloride	1.32	62	2562	0.697	ug/L #	12
12) 1,1-Dichloroethene	2.13	96	1871	0.484	ug/L #	1
13) Acetone	2.18	43	8327	9.207	ug/L	96
14) Carbon disulfide	2.31	76	4150	0.794	ug/L	95
16) Methylene chloride	2.53	84	3382	1.300	ug/L	92
18) trans-1,2-Dichloroethene	2.79	96	4447	2.149	ug/L	91
22) cis-1,2-Dichloroethene	3.96	96	33443	14.633	ug/L	95
25) Chloroform	4.43	83	41293	9.867	ug/L	95
35) Trichloroethene	5.96	95	1364	0.602	ug/L #	49
42) cis-1,3-Dichloropropene	7.03	75	2435	0.778	ug/L #	59
59) 1,2,3-Trichloropropane	11.30	75	10301	5.962	ug/L	99

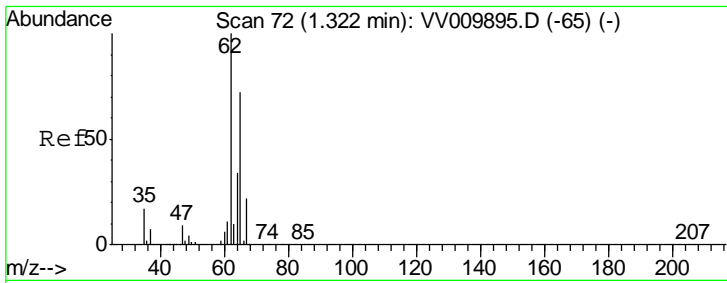
(#) = qualifier out of range (m) = manual integration (+) = signals summed

Data File : VV009909.D  
Acq On : 26 Mar 2019 22:05  
Operator : SY/MD  
Sample : K2101-02  
Misc : 5.72G/10mL/MSVOA\_V/SOIL  
ALS Vial : 1 Sample Multiplier: 1

Instrument :  
MSVOA\_V  
ClientSampled :  
BF0K0

Quant Time: Mar 27 01:49:25 2019  
Quant Method : Z:\VOASRV\HPCHEM1\MSVOA\_V\METHOD\SOM2VLM032619S.M  
Quant Title : VOC Analysis  
QLast Update : Wed Mar 27 01:42:27 2019  
Response via : Initial Calibration

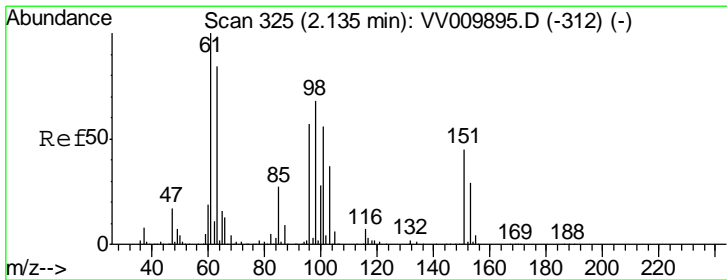
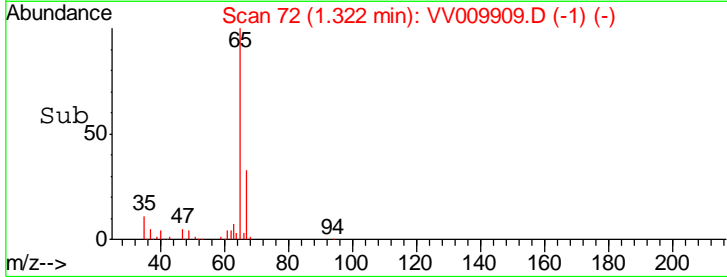
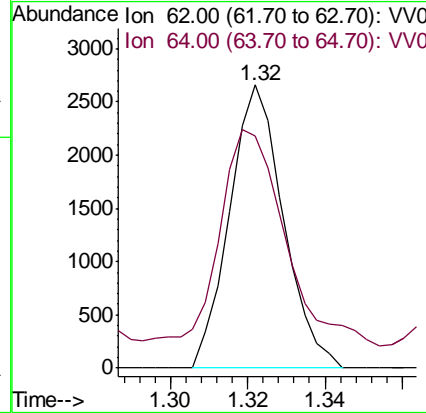
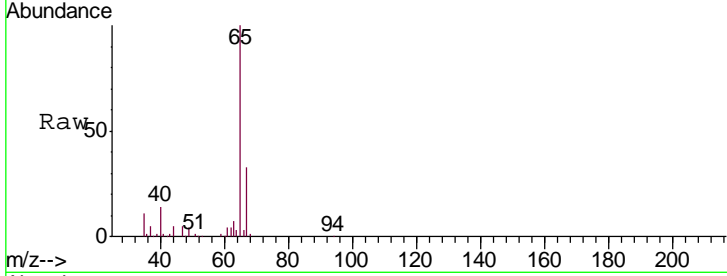




#5  
 Vinyl chloride  
 Concen: 0.697 ug/L  
 RT: 1.32 min Scan# 72  
 Delta R.T. 0.00 min  
 Lab File: VV009909.D  
 Acq: 26 Mar 2019 22:05

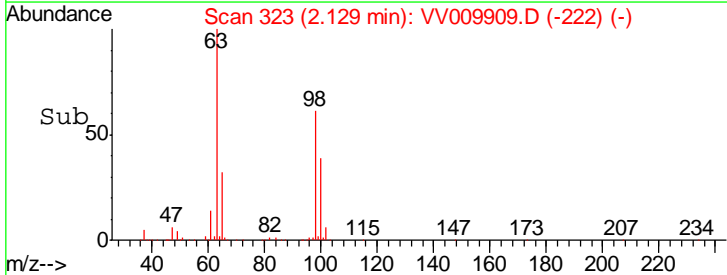
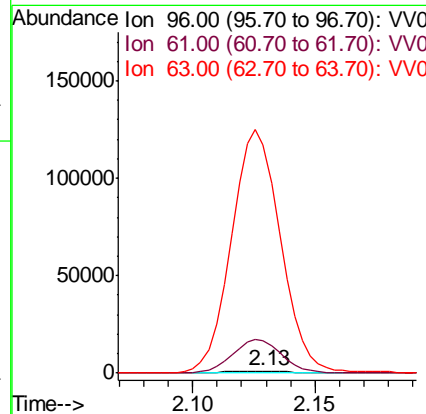
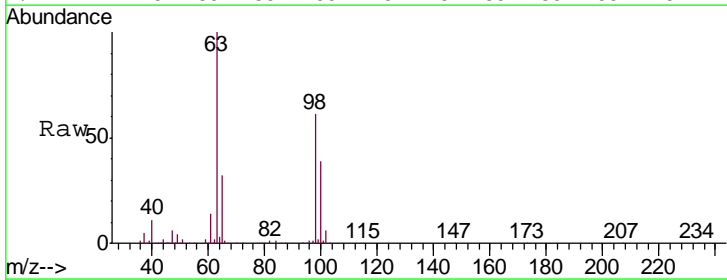
Instrument :  
 MSVOA\_V  
 ClientSampled :  
 BF0K0

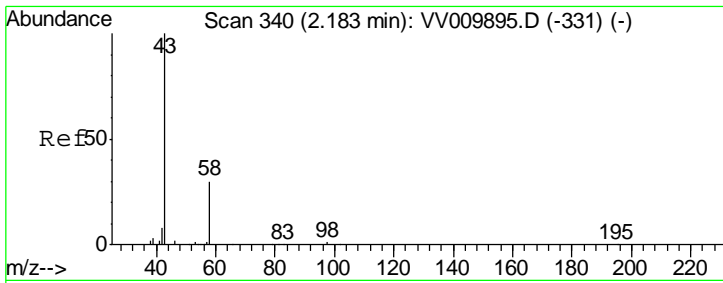
Tgt Ion: 62 Resp: 2562  
 Ion Ratio Lower Upper  
 62 100  
 64 81.9 22.8 42.4#



#12  
 1,1-Dichloroethene  
 Concen: 0.484 ug/L  
 RT: 2.13 min Scan# 323  
 Delta R.T. -0.01 min  
 Lab File: VV009909.D  
 Acq: 26 Mar 2019 22:05

Tgt Ion: 96 Resp: 1871  
 Ion Ratio Lower Upper  
 96 100  
 61 1438.5 124.3 230.8#  
 63 10209.2 88.2 163.8#

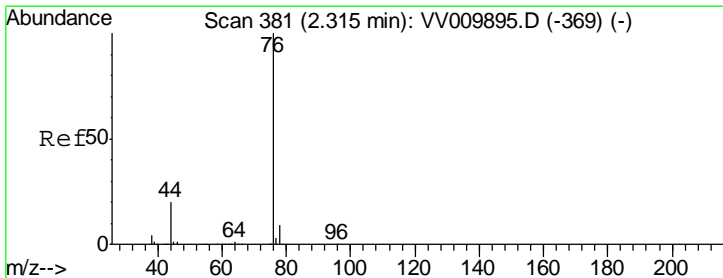
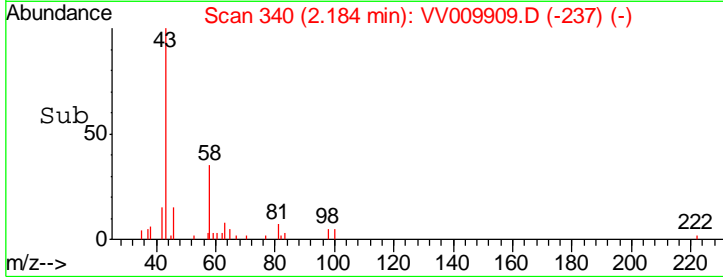
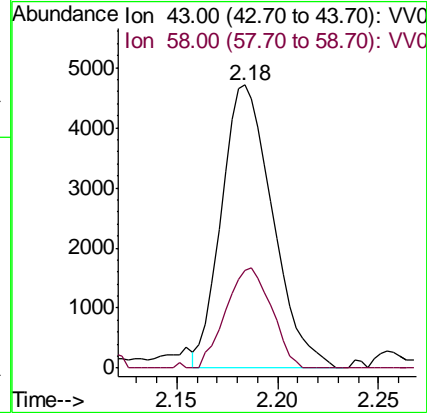
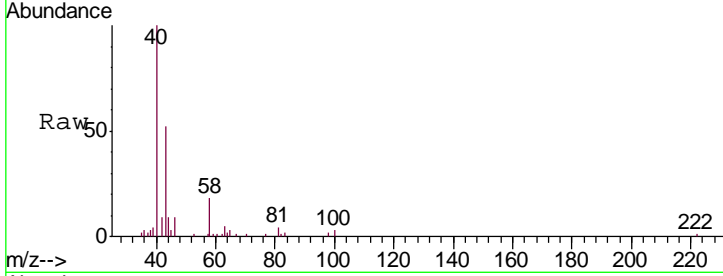




#13  
 Acetone  
 Concen: 9.207 ug/L  
 RT: 2.18 min Scan# 340  
 Delta R.T. 0.00 min  
 Lab File: VV009909.D  
 Acq: 26 Mar 2019 22:05

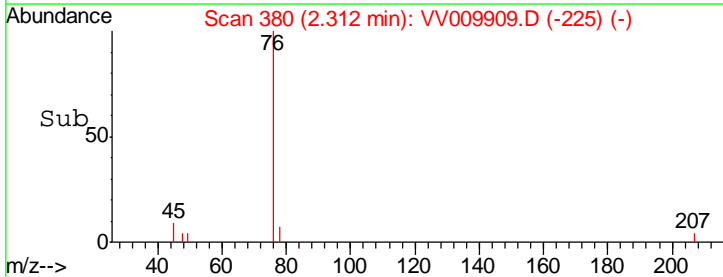
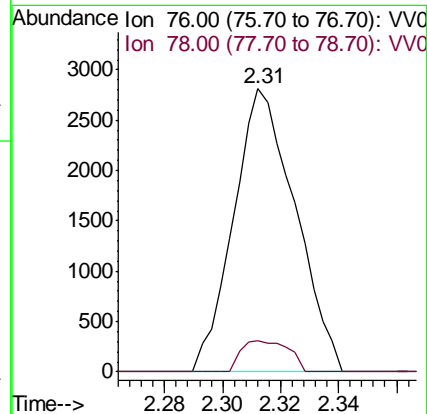
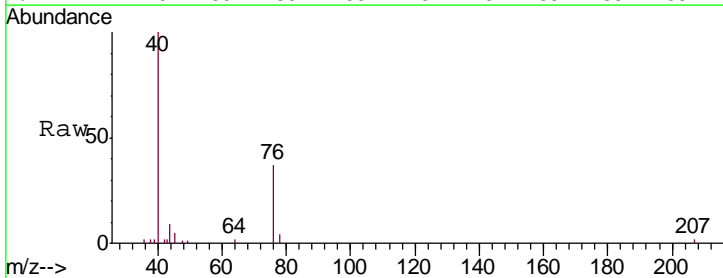
Instrument :  
 MSVOA\_V  
 ClientSampled :  
 BF0K0

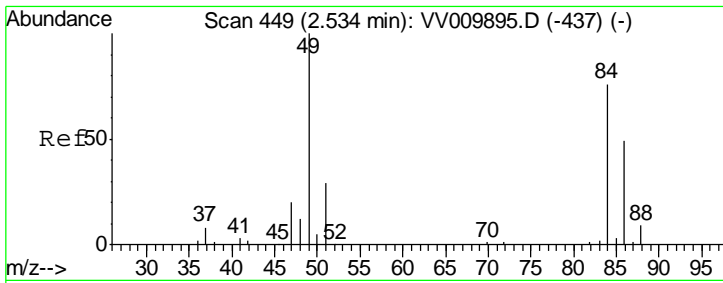
Tgt Ion	Resp	Lower	Upper
43	100		
58	31.6	0.0	59.4



#14  
 Carbon disulfide  
 Concen: 0.794 ug/L  
 RT: 2.31 min Scan# 380  
 Delta R.T. -0.00 min  
 Lab File: VV009909.D  
 Acq: 26 Mar 2019 22:05

Tgt Ion	Resp	Lower	Upper
76	100		
78	11.1	7.5	11.3

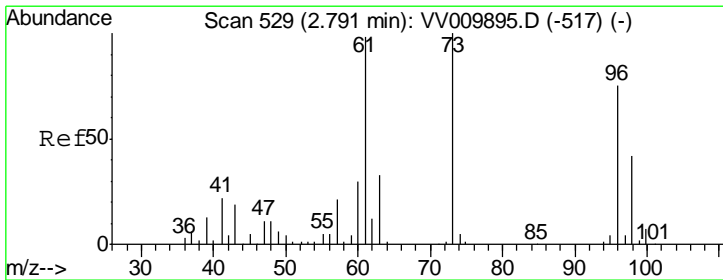
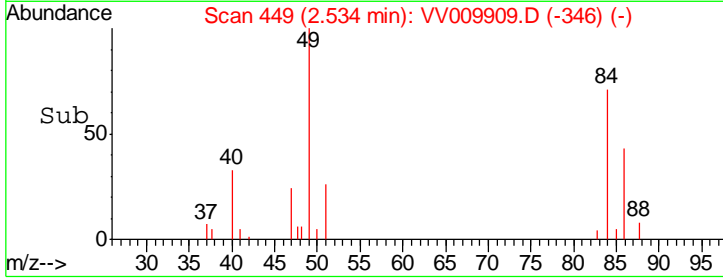
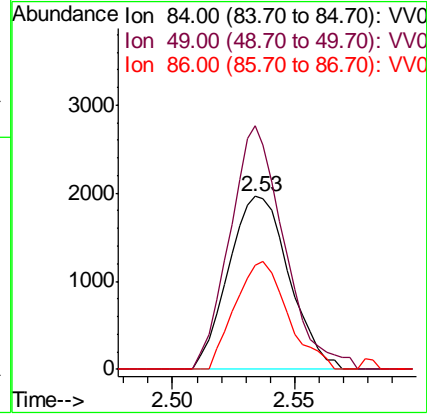
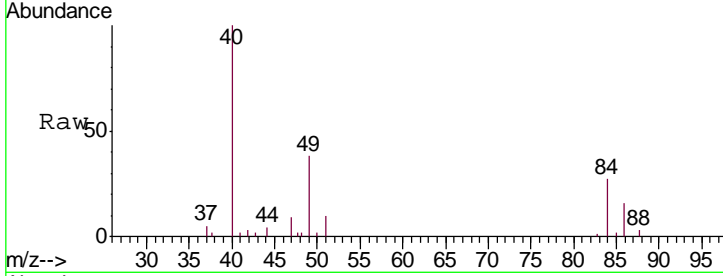




#16  
 Methylene chloride  
 Concen: 1.300 ug/L  
 RT: 2.53 min Scan# 449  
 Delta R.T. 0.00 min  
 Lab File: VV009909.D  
 Acq: 26 Mar 2019 22:05

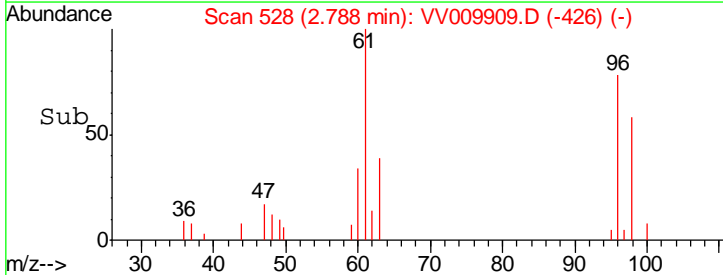
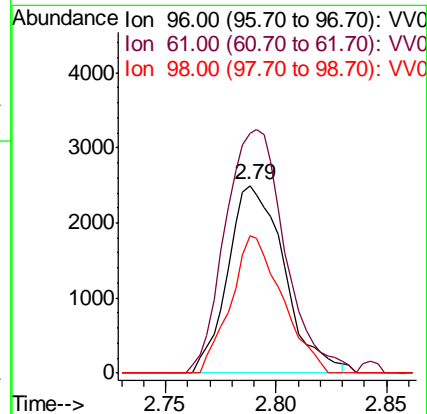
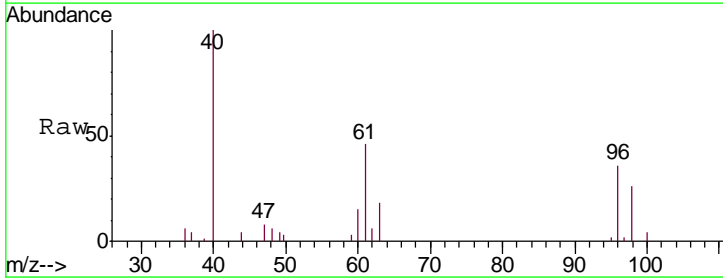
Instrument :  
 MSVOA\_V  
 ClientSampled :  
 BF0K0

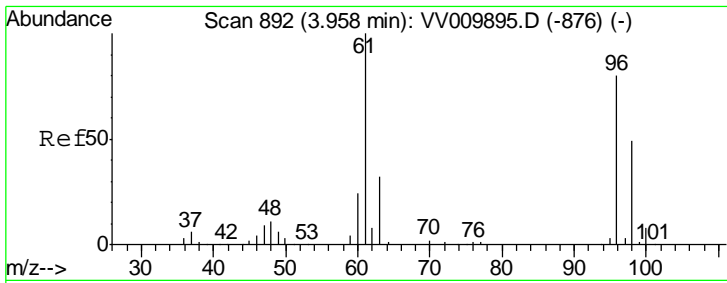
Tgt Ion	Resp	Lower	Upper
84	100		
49	140.8	90.4	167.8
86	60.4	44.0	81.6



#18  
 trans-1,2-Dichloroethene  
 Concen: 2.149 ug/L  
 RT: 2.79 min Scan# 528  
 Delta R.T. -0.00 min  
 Lab File: VV009909.D  
 Acq: 26 Mar 2019 22:05

Tgt Ion	Resp	Lower	Upper
96	100		
61	127.4	96.8	179.8
98	73.5	46.1	85.7

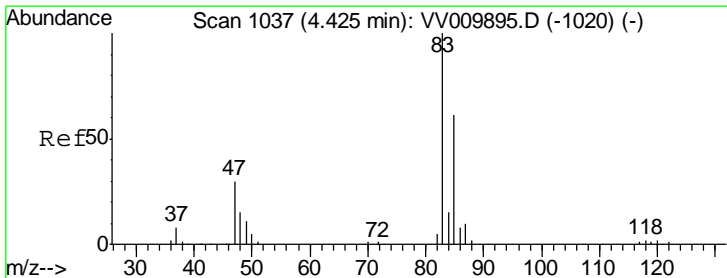
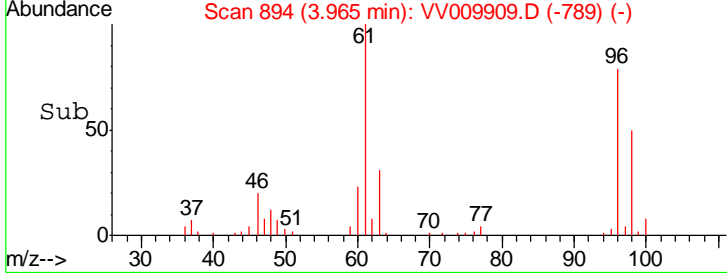
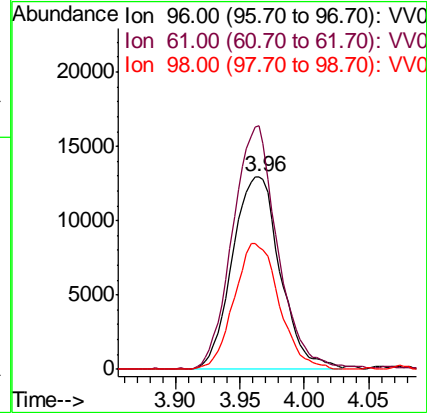
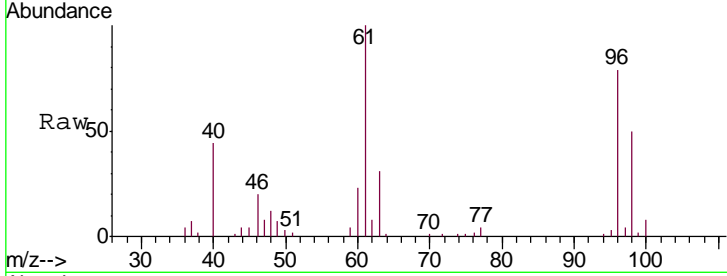




#22  
 cis-1,2-Dichloroethene  
 Concen: 14.633 ug/L  
 RT: 3.96 min Scan# 894  
 Delta R.T. 0.01 min  
 Lab File: VV009909.D  
 Acq: 26 Mar 2019 22:05

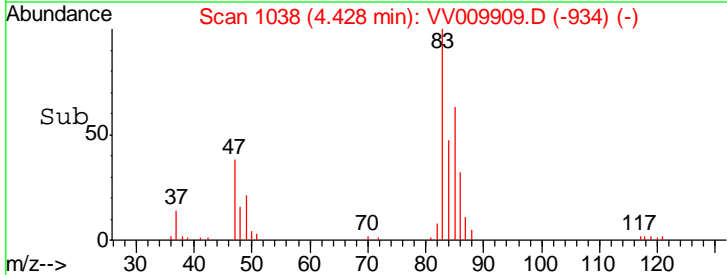
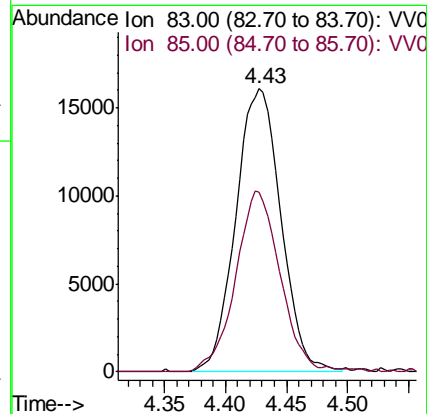
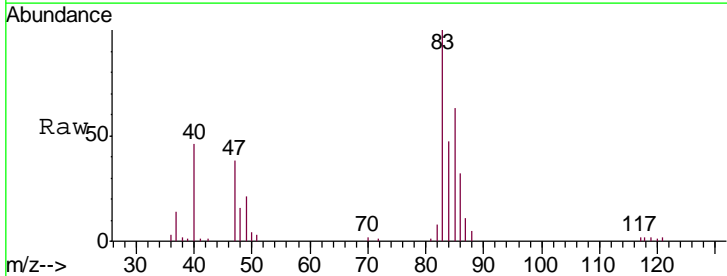
Instrument :  
 MSVOA\_V  
 ClientSampled :  
 BF0K0

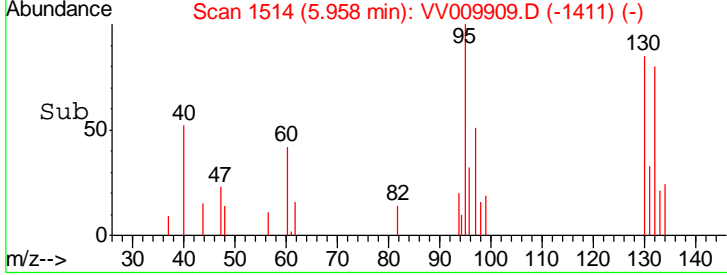
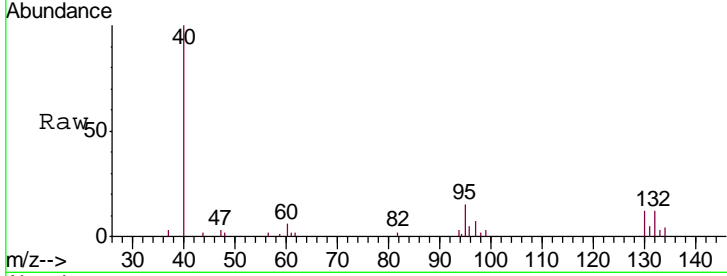
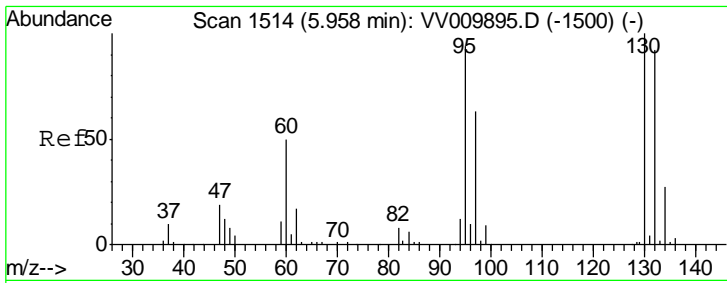
Tgt Ion	Resp	Lower	Upper
96	33443		
61	126.1	91.4	169.8
98	63.2	48.0	89.2



#25  
 Chloroform  
 Concen: 9.867 ug/L  
 RT: 4.43 min Scan# 1038  
 Delta R.T. 0.00 min  
 Lab File: VV009909.D  
 Acq: 26 Mar 2019 22:05

Tgt Ion	Resp	Lower	Upper
83	41293		
85	62.2	46.1	85.7



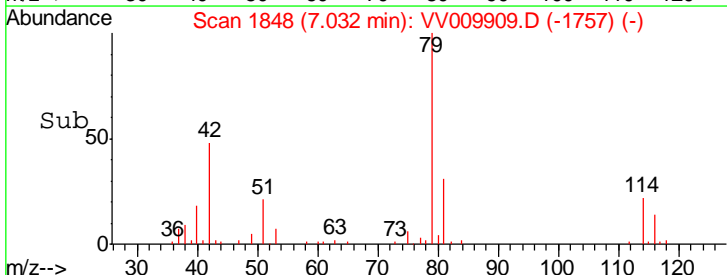
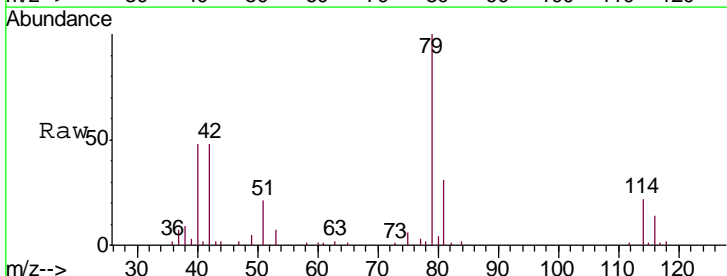
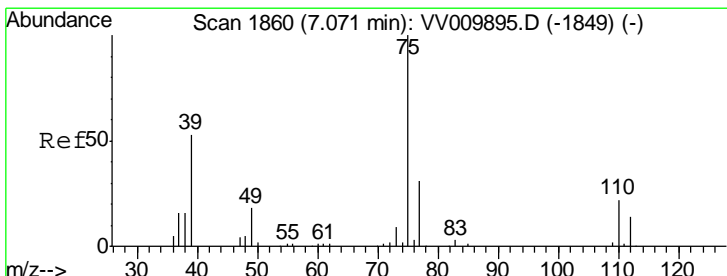
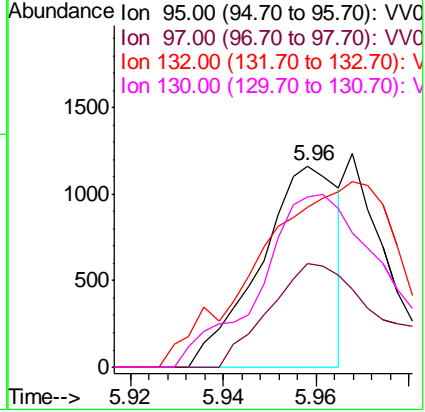


#35  
 Trichloroethene  
 Concen: 0.602 ug/L  
 RT: 5.96 min Scan# 1514  
 Delta R.T. 0.00 min  
 Lab File: VV009909.D  
 Acq: 26 Mar 2019 22:05

Instrument : MSVOA\_V  
 ClientSampled : BF0K0

Tgt Ion: 95 Resp: 1364

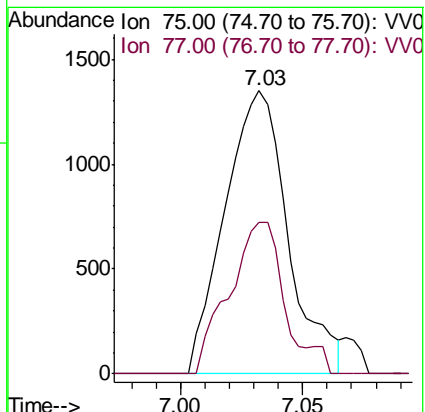
Ion	Ratio	Lower	Upper
95	100		
97	77.9	46.3	85.9
132	13.0	69.3	128.7#
130	139.1	69.5	129.1#

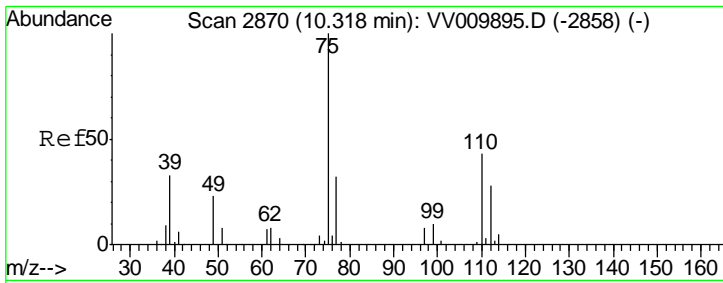


#42  
 cis-1,3-Dichloropropene  
 Concen: 0.778 ug/L  
 RT: 7.03 min Scan# 1848  
 Delta R.T. -0.04 min  
 Lab File: VV009909.D  
 Acq: 26 Mar 2019 22:05

Tgt Ion: 75 Resp: 2435

Ion	Ratio	Lower	Upper
75	100		
77	53.6	21.8	40.6#





#59  
 1,2,3-Trichloropropane  
 Concen: 5.962 ug/L  
 RT: 11.30 min Scan# 3174  
 Delta R.T. 0.98 min  
 Lab File: VV009909.D  
 Acq: 26 Mar 2019 22:05

Instrument : MSVOA\_V  
 ClientSampled : BF0K0

Tgt Ion	Resp	Lower	Upper
75	10301		
75	100		
77	33.3	26.2	39.2

