

Data Path : Z:\voasrv\HPCHEM1\MSVOA_V\Data\VV032621\
 Data File : VV020782.D
 Acq On : 27 Mar 2021 01:36
 Operator : SY/MD
 Sample : M1824-13
 Misc : 5.0mL/MSVOA_V/WATER
 ALS Vial : 40 Sample Multiplier: 1

Instrument :
 MSVOA_V
 ClientSampleId :
 BG4T8

Integration Parameters: LSCINT.P

Integrator: RTE
 Smoothing : OFF
 Sampling : 1
 Start Thrs : 0.2
 Stop Thrs : 0

Filtering: 5
 Min Area: 0 % of largest Peak
 Max Peaks: 100
 Peak Location: TOP

If leading or trailing edge < 100 prefer < Baseline drop else tangent >
 Peak separation: 5

Method : Z:\voasrv\HPCHEM1\MSVOA_V\Method\SOMVLM032321WMA.M
 Title : VOC Analysis

Signal : TIC: VV020782.D\data.ms

peak #	R.T. min	first scan	max scan	last scan	PK TY	peak height	corr. area	corr. % max.	% of total
1	1.111	17	22	31	rVB	71320	64056	2.89%	0.359%
2	1.307	77	83	99	rVB	250573	272623	12.31%	1.529%
3	1.571	158	165	178	rVB	213187	239602	10.82%	1.343%
4	2.111	322	333	350	rBV	465861	701084	31.65%	3.931%
5	2.449	432	438	446	rVB7	1301	2091	0.09%	0.012%
6	2.596	481	484	489	rBV4	565	526	0.02%	0.003%
7	2.638	494	497	500	rBV4	601	397	0.02%	0.002%
8	2.690	509	513	516	rBV4	747	702	0.03%	0.004%
9	2.715	517	521	523	rBV4	516	404	0.02%	0.002%
10	2.815	550	552	555	rVB3	711	361	0.02%	0.002%
11	2.879	570	572	574	rBV2	508	237	0.01%	0.001%
12	2.899	574	578	587	rVV7	852	1419	0.06%	0.008%
13	2.957	592	596	598	rBV4	1899	1425	0.06%	0.008%
14	3.011	611	613	615	rBV	571	331	0.01%	0.002%
15	3.047	621	624	629	rBV4	1169	982	0.04%	0.006%
16	3.143	649	654	655	rBV3	743	566	0.03%	0.003%
17	3.185	665	667	671	rVB2	624	424	0.02%	0.002%
18	3.259	688	690	692	rBV	432	254	0.01%	0.001%
19	3.313	704	707	709	rBV	445	265	0.01%	0.001%
20	3.358	718	721	723	rVV2	347	231	0.01%	0.001%
21	3.410	735	737	742	rVB2	468	333	0.02%	0.002%
22	3.439	743	746	749	rBV	356	254	0.01%	0.001%
23	3.503	760	766	772	rVV3	695	896	0.04%	0.005%
24	3.609	797	799	800	rVB	643	225	0.01%	0.001%
25	3.629	800	805	809	rBV3	587	648	0.03%	0.004%
26	3.735	834	838	840	rBV4	1636	1338	0.06%	0.008%
27	3.821	862	865	869	rVB4	721	605	0.03%	0.003%
28	3.886	874	885	918	rBV	154206	436001	19.68%	2.445%
29	4.352	1013	1030	1060	rBV	389652	975624	44.04%	5.470%
30	4.706	1138	1140	1144	rVB3	721	445	0.02%	0.002%
31	4.725	1144	1146	1147	rBV	669	236	0.01%	0.001%
32	4.838	1177	1181	1184	rBV3	790	508	0.02%	0.003%
33	4.947	1212	1215	1217	rBV2	637	366	0.02%	0.002%
34	5.053	1230	1248	1280	rBV2	842823	2215106	100.00%	12.420%
35	5.529	1392	1396	1399	rVB5	783	641	0.03%	0.004%
36	5.622	1412	1425	1464	rBV	774858	1571544	70.95%	8.812%

Data Path : Z:\voasrv\HPCHEM1\MSVOA_V\Data\VW032621\
 Data File : VW020782.D
 Acq On : 27 Mar 2021 01:36
 Operator : SY/MD
 Sample : M1824-13
 Misc : 5.0mL/MSVOA_V/WATER
 ALS Vial : 40 Sample Multiplier: 1

Instrument :
 MSVOA_V
 ClientSampleId :
 BG4T8

Integration Parameters: LSCINT.P

Integrator: RTE
 Smoothing : OFF
 Sampling : 1
 Start Thrs : 0.2
 Stop Thrs : 0

Filtering: 5
 Min Area: 0 % of largest Peak
 Max Peaks: 100
 Peak Location: TOP

If leading or trailing edge < 100 prefer < Baseline drop else tangent >
 Peak separation: 5

Method : Z:\voasrv\HPCHEM1\MSVOA_V\Method\SOMVLM032321WMA.M
 Title : VOC Analysis

37	5.876	1501	1504	1505	rBV3	1403	671	0.03%	0.004%
38	6.075	1552	1566	1587	rBV	490178	996616	44.99%	5.588%
39	6.339	1645	1648	1651	rBV5	1220	631	0.03%	0.004%
40	6.423	1672	1674	1677	rBV4	528	381	0.02%	0.002%
41	6.461	1682	1686	1689	rBV5	653	770	0.03%	0.004%
42	6.509	1699	1701	1703	rBV2	846	375	0.02%	0.002%
43	6.564	1715	1718	1720	rBV2	483	270	0.01%	0.002%
44	6.580	1720	1723	1727	rBV2	572	436	0.02%	0.002%
45	6.651	1742	1745	1748	rVV5	846	595	0.03%	0.003%
46	6.834	1800	1802	1808	rVB4	1040	666	0.03%	0.004%
47	6.911	1823	1826	1830	rBV3	699	500	0.02%	0.003%
48	6.992	1839	1851	1880	rBV	267477	494014	22.30%	2.770%
49	7.230	1921	1925	1928	rBV5	1108	879	0.04%	0.005%
50	7.320	1941	1953	1976	rBV	964196	1679489	75.82%	9.417%
51	7.625	2036	2048	2071	rBV	194692	343889	15.52%	1.928%
52	7.902	2132	2134	2137	rBV4	775	585	0.03%	0.003%
53	7.937	2142	2145	2146	rBV2	1459	870	0.04%	0.005%
54	8.091	2183	2193	2225	rBV	565255	1020646	46.08%	5.723%
55	8.551	2333	2336	2338	rVB	973	518	0.02%	0.003%
56	8.567	2339	2341	2342	rBV	705	265	0.01%	0.001%
57	8.770	2401	2404	2408	rBV3	930	619	0.03%	0.003%
58	8.857	2418	2431	2468	rBV	1200667	1958891	88.43%	10.984%
59	9.165	2524	2527	2533	rBV4	1077	1111	0.05%	0.006%
60	9.223	2539	2545	2546	rBV3	955	657	0.03%	0.004%
61	9.255	2551	2555	2558	rVV3	883	664	0.03%	0.004%
62	9.281	2560	2563	2565	rVV2	1018	588	0.03%	0.003%
63	9.506	2630	2633	2635	rBV2	699	455	0.02%	0.003%
64	9.535	2639	2642	2644	rBV2	667	373	0.02%	0.002%
65	9.699	2689	2693	2697	rBV5	872	869	0.04%	0.005%
66	9.734	2701	2704	2707	rBV2	623	497	0.02%	0.003%
67	9.776	2715	2717	2719	rVB2	779	363	0.02%	0.002%
68	9.828	2727	2733	2735	rBV4	1435	1615	0.07%	0.009%
69	9.882	2746	2750	2753	rBV2	974	668	0.03%	0.004%
70	10.040	2794	2799	2800	rBV2	799	523	0.02%	0.003%
71	10.117	2821	2823	2825	rBV2	567	345	0.02%	0.002%
72	10.149	2830	2833	2835	rVB	509	303	0.01%	0.002%
73	10.181	2840	2843	2844	rBV2	783	449	0.02%	0.003%
74	10.223	2844	2856	2878	rVB	729634	1153299	52.07%	6.467%
75	10.426	2917	2919	2924	rVB4	1173	790	0.04%	0.004%
76	10.455	2924	2928	2934	rBV3	1117	1133	0.05%	0.006%

Data Path : Z:\voasrv\HPCHEM1\MSVOA_V\Data\VW032621\
 Data File : VW020782.D
 Acq On : 27 Mar 2021 01:36
 Operator : SY/MD
 Sample : M1824-13
 Misc : 5.0mL/MSVOA_V/WATER
 ALS Vial : 40 Sample Multiplier: 1

Instrument :
 MSVOA_V
 ClientSampleId :
 BG4T8

Integration Parameters: LSCINT.P
 Integrator: RTE
 Smoothing : OFF
 Sampling : 1
 Start Thrs : 0.2
 Stop Thrs : 0
 Filtering: 5
 Min Area: 0 % of largest Peak
 Max Peaks: 100
 Peak Location: TOP

If leading or trailing edge < 100 prefer < Baseline drop else tangent >
 Peak separation: 5

Method : Z:\voasrv\HPCHEM1\MSVOA_V\Method\SOMVLM032321WMA.M
 Title : VOC Analysis

77	10.480	2934	2936	2940	rVB2	837	572	0.03%	0.003%
78	10.509	2940	2945	2947	rBV3	1273	1023	0.05%	0.006%
79	10.599	2970	2973	2974	rBV	541	281	0.01%	0.002%
80	10.657	2985	2991	2993	rBV2	734	642	0.03%	0.004%
81	10.702	3003	3005	3007	rVV3	626	289	0.01%	0.002%
82	10.741	3015	3017	3022	rVB3	756	430	0.02%	0.002%
83	10.763	3022	3024	3026	rBV	619	319	0.01%	0.002%
84	10.863	3051	3055	3061	rBV4	918	967	0.04%	0.005%
85	10.895	3063	3065	3069	rBV2	576	461	0.02%	0.003%
86	11.024	3102	3105	3109	rVB4	909	671	0.03%	0.004%
87	11.107	3126	3131	3139	rVB5	2779	3211	0.14%	0.018%
88	11.168	3142	3150	3160	rVV5	2962	4914	0.22%	0.028%
89	11.255	3165	3177	3198	rBV	1235866	1893444	85.48%	10.617%
90	11.631	3282	3294	3315	rBV	1120513	1752979	79.14%	9.829%
91	11.889	3370	3374	3377	rBV3	649	606	0.03%	0.003%
92	12.258	3486	3489	3492	rBV2	783	656	0.03%	0.004%
93	12.361	3514	3521	3531	rVB9	5765	8720	0.39%	0.049%
94	12.529	3569	3573	3574	rBV3	506	341	0.02%	0.002%
95	12.664	3613	3615	3620	rVB	1080	634	0.03%	0.004%
96	12.689	3620	3623	3628	rBV2	812	755	0.03%	0.004%
97	12.721	3631	3633	3637	rBV3	714	420	0.02%	0.002%
98	13.162	3769	3770	3774	rBV	584	450	0.02%	0.003%
99	14.075	4050	4054	4055	rBV2	895	678	0.03%	0.004%
100	14.709	4248	4251	4254	rBV3	1422	1148	0.05%	0.006%

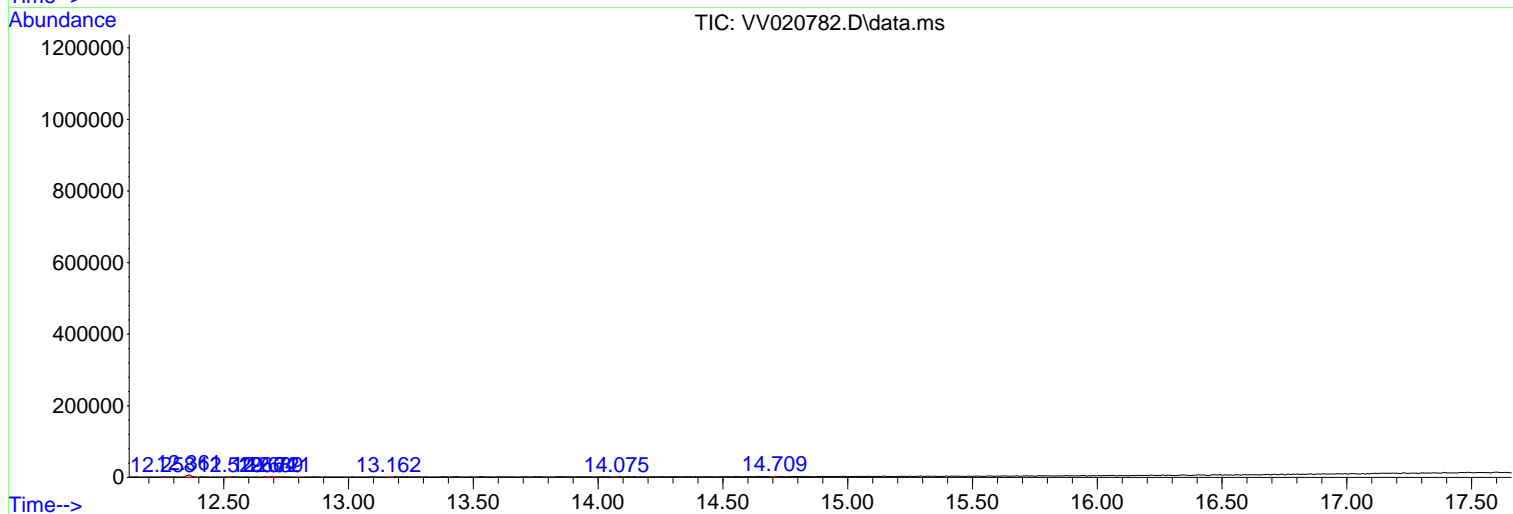
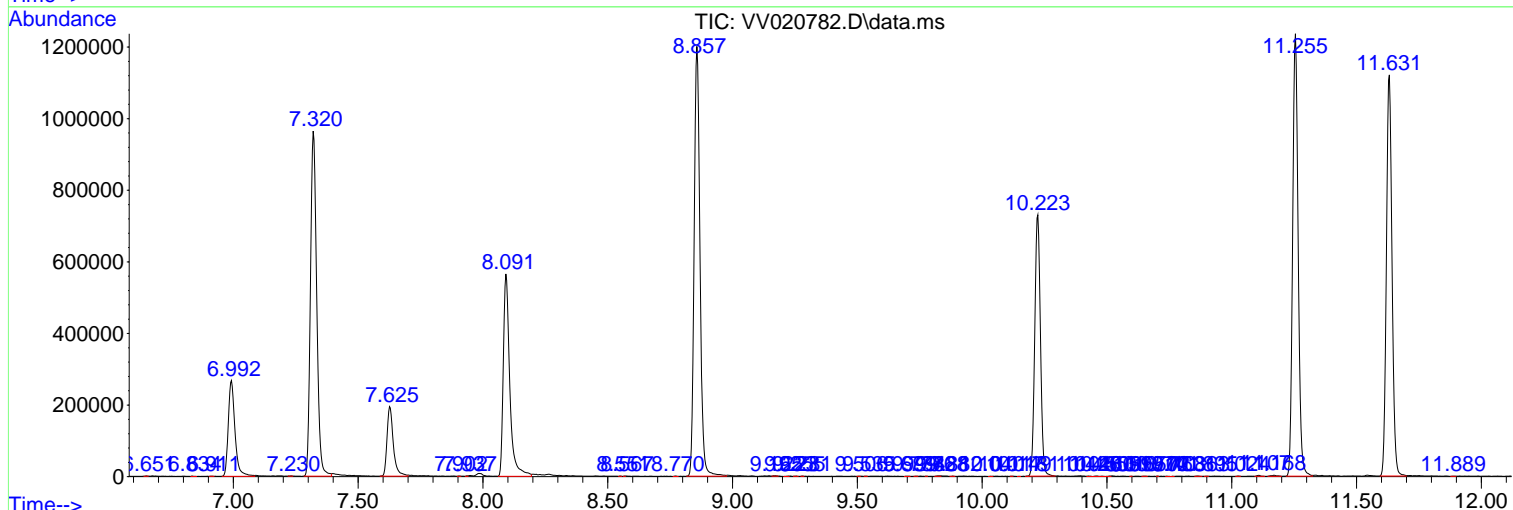
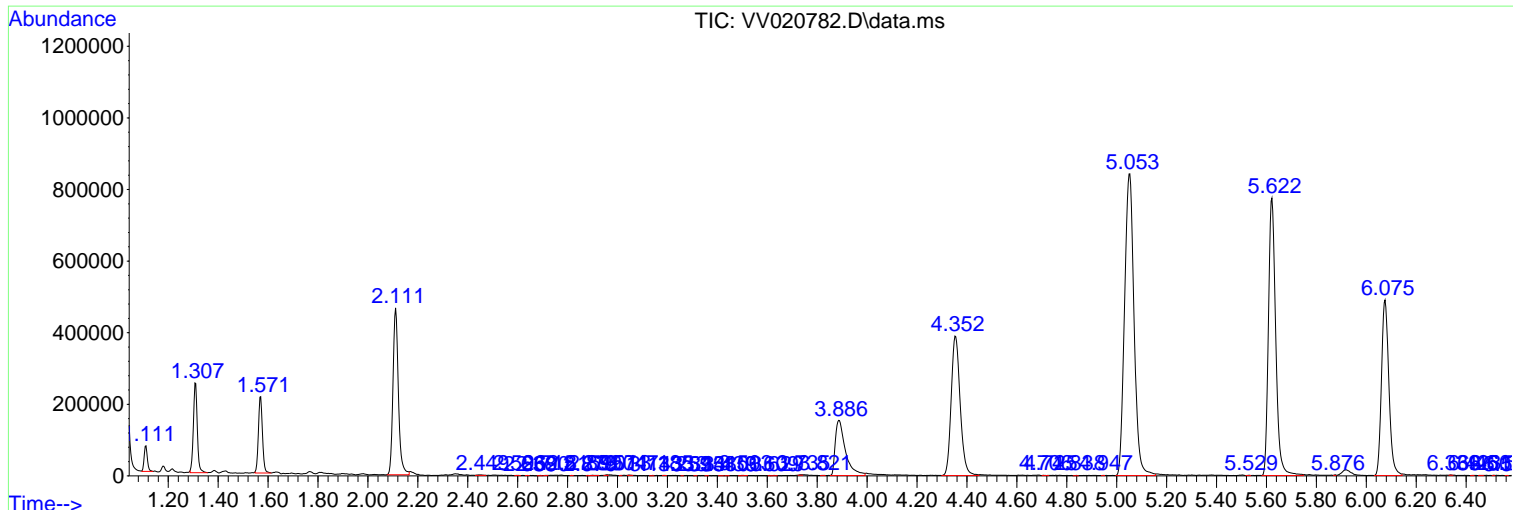
Sum of corrected areas: 17834639

Data Path : Z:\voasrv\HPCHEM1\MSVOA_V\Data\VV032621\
 Data File : VV020782.D
 Acq On : 27 Mar 2021 01:36
 Operator : SY/MD
 Sample : M1824-13
 Misc : 5.0mL/MSVOA_V/WATER
 ALS Vial : 40 Sample Multiplier: 1

Instrument :
 MSVOA_V
 ClientSampled :
 BG4T8

Quant Method : Z:\voasrv\HPCHEM1\MSVOA_V\Method\SOMVLM032321WMA.M
 Quant Title : VOC Analysis

TIC Library : C:\DATABASE\NIST11.L
 TIC Integration Parameters: LSCINT.P



Library Search Compound Report

Data Path : Z:\voasrv\HPCHEM1\MSVOA_V\Data\VW032621\
Data File : VW020782.D
Acq On : 27 Mar 2021 01:36
Operator : SY/MD
Sample : M1824-13
Misc : 5.0mL/MSVOA_V/WATER
ALS Vial : 40 Sample Multiplier: 1

Instrument :
MSVOA_V
ClientSampleId :
BG4T8

Quant Method : Z:\voasrv\HPCHEM1\MSVOA_V\Method\SOMVLM032321WMA.M
Quant Title : VOC Analysis

TIC Library : C:\DATABASE\NIST11.L
TIC Integration Parameters: LSCINT.P

No Library Search Compounds Detected

Data Path : Z:\voasrv\HPCHEM1\MSVOA_V\Data\VV032621\
Data File : VV020782.D
Acq On : 27 Mar 2021 01:36
Operator : SY/MD
Sample : M1824-13
Misc : 5.0mL/MSVOA_V/WATER
ALS Vial : 40 Sample Multiplier: 1

Instrument :
MSVOA_V
ClientSampled :
BG4T8

Quant Method : Z:\voasrv\HPCHEM1\MSVOA_V\Method\SOMVLM032321WMA.M
Quant Title : VOC Analysis

TIC Library : C:\DATABASE\NIST11.L
TIC Integration Parameters: LSCINT.P

TIC Top Hit name	RT	EstConc	Units	Response	--Internal Standard--		
					#	RT	Resp Conc
