

Data Path : Z:\VOASRV\HPCHEM1\MSVOA V\DATA\VV032819\
 Data File : VV009970.D
 Acq On : 28 Mar 2019 17:12
 Operator : SY/MD
 Sample : K2101-21RE
 Misc : 5.85G/10mL/MSVOA V/SOIL
 ALS Vial : 1 Sample Multiplier: 1

Instrument :
 MSVOA_V
 ClientSampleId :
 BFOLORE

Quant Time: Mar 29 03:47:51 2019
 Quant Method : Z:\VOASRV\HPCHEM1\MSVOA_V\METHOD\SOM2VLM032619S.M
 Quant Title : VOC Analysis
 QLast Update : Fri Mar 29 02:19:37 2019
 Response via : Initial Calibration

Internal Standards	R.T.	QIon	Response	Conc	Units	Dev(Min)
1) 1,4-Difluorobenzene	5.66	114	111374	25.00	ug/L	0.00
28) Chlorobenzene-d5	8.89	117	94954	25.00	ug/L	0.00
60) 1,4-Dichlorobenzene-d4	11.30	152	29076	25.00	ug/L	0.00

System Monitoring Compounds

4) Vinyl Chloride-d3	1.32	65	60375	26.71	ug/L	0.00
Spiked Amount	25.000	Range	30 - 150	Recovery	=	106.84%
7) Chloroethane-d5	1.57	69	64155	26.28	ug/L	0.00
Spiked Amount	25.000	Range	30 - 150	Recovery	=	105.12%
10) 1,1-Dichloroethene-d2	2.13	63	130584	21.12	ug/L	0.00
Spiked Amount	25.000	Range	45 - 110	Recovery	=	84.48%
20) 2-Butanone-d5	3.93	46	28639	68.00	ug/L	-0.01
Spiked Amount	50.000	Range	20 - 135	Recovery	=	136.00%#
24) Chloroform-d	4.40	84	60762	21.41	ug/L	0.00
Spiked Amount	25.000	Range	40 - 150	Recovery	=	85.64%
26) 1,2-Dichloroethane-d4	5.08	65	48715	28.53	ug/L	0.00
Spiked Amount	25.000	Range	70 - 130	Recovery	=	114.12%
29) Benzene-d6	5.10	84	147776	29.63	ug/L	0.00
Spiked Amount	25.000	Range	20 - 135	Recovery	=	118.52%
33) 1,2-Dichloropropane-d6	6.12	67	43551	29.85	ug/L	0.00
Spiked Amount	25.000	Range	70 - 120	Recovery	=	119.40%
37) Toluene-d8	7.36	98	121198	25.68	ug/L	0.00
Spiked Amount	25.000	Range	30 - 130	Recovery	=	102.72%
38) trans-1,3-Dichloropropene-	7.66	79	15318	25.67	ug/L	0.00
Spiked Amount	25.000	Range	30 - 135	Recovery	=	102.68%
39) 2-Hexanone-d5	8.13	63	19020	69.85	ug/L	0.00
Spiked Amount	50.000	Range	20 - 135	Recovery	=	139.70%#
48) 1,1,2,2-Tetrachloroethane-	10.26	84	43524	30.13	ug/L	0.00
Spiked Amount	25.000	Range	45 - 120	Recovery	=	120.52%#
61) 1,2-Dichlorobenzene-d4	11.68	152	29233	26.41	ug/L	0.00
Spiked Amount	25.000	Range	75 - 120	Recovery	=	105.64%

Target Compounds

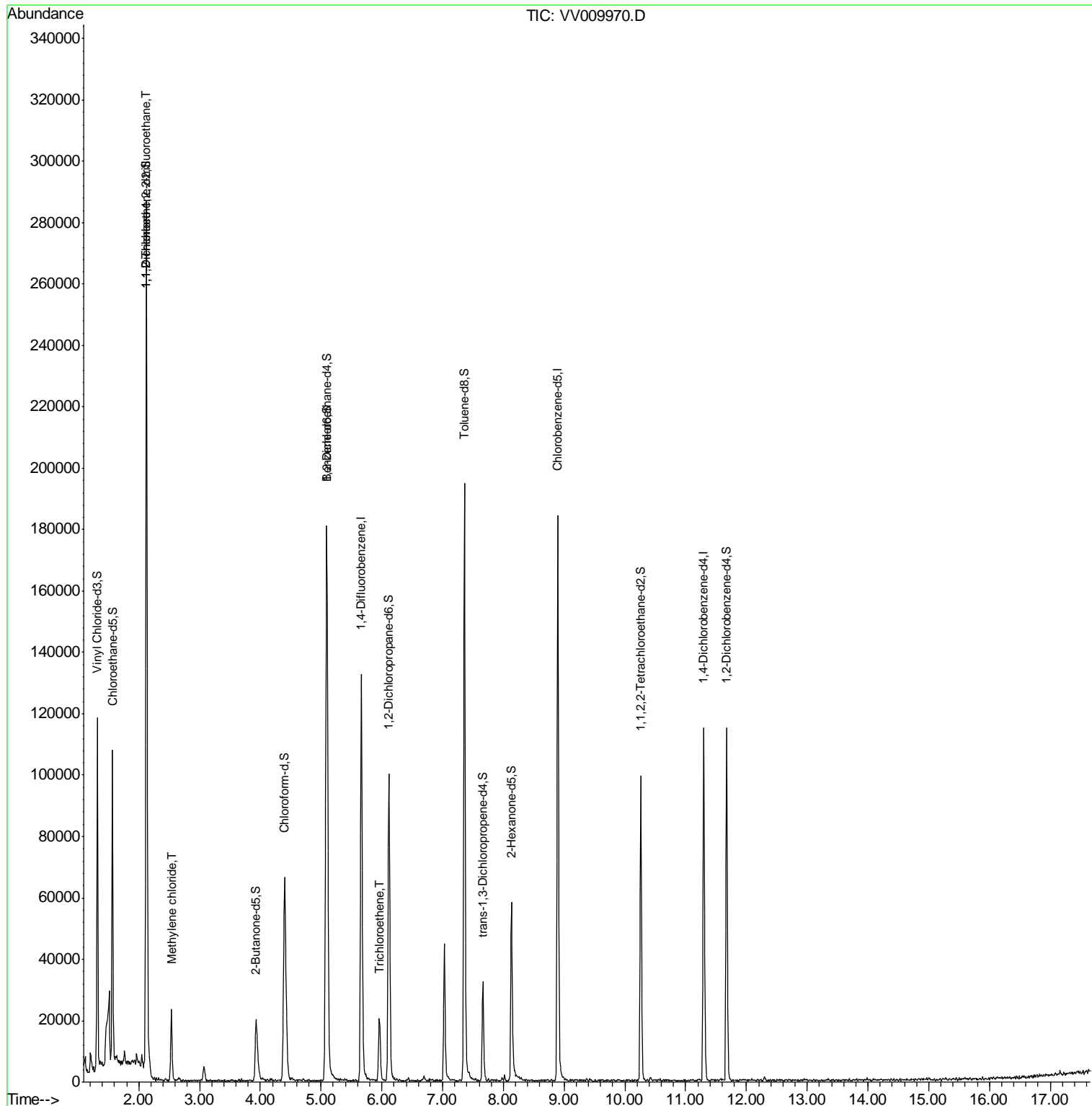
Target Compounds	R.T.	QIon	Response	Conc	Units	Ovalue
11) 1,1,2-Trichloro-1,2,2-trif	2.13	101	11141	3.469	ug/L	95
16) Methylene chloride	2.54	84	8965	4.888	ug/L	98
35) Trichloroethene	5.96	95	6108	4.441	ug/L	91

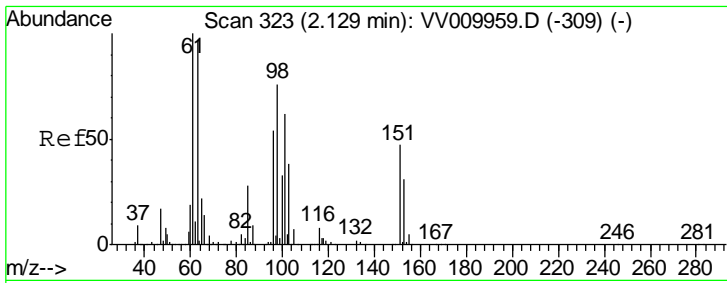
(#) = qualifier out of range (m) = manual integration (+) = signals summed

Data Path : Z:\VOASRV\HPCHEM1\MSVOA V\DATA\VV032819\
 Data File : VV009970.D
 Acq On : 28 Mar 2019 17:12
 Operator : SY/MD
 Sample : K2101-21RE
 Misc : 5.85G/10mL/MSVOA V/SOIL
 ALS Vial : 1 Sample Multiplier: 1

Instrument :
 MSVOA_V
 ClientSampled :
 BFLORE

Quant Time: Mar 29 03:47:51 2019
 Quant Method : Z:\VOASRV\HPCHEM1\MSVOA_V\METHOD\SOM2VLM032619S.M
 Quant Title : VOC Analysis
 QLast Update : Fri Mar 29 02:19:37 2019
 Response via : Initial Calibration





#11

1,1,2-Trichloro-1,2,2-trifluoroethane

Concen: 3.469 ug/L

RT: 2.13 min Scan# 324

Delta R.T. 0.00 min

Lab File: VV009970.D

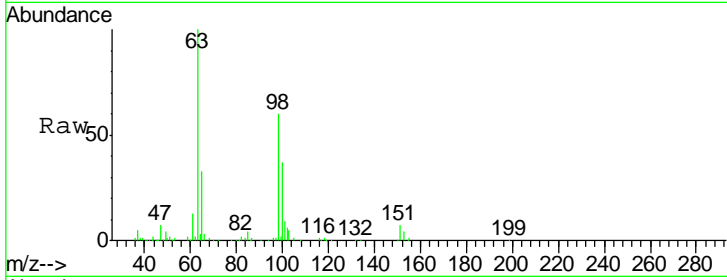
Acq: 28 Mar 2019 17:12

Instrument :

MSVOA_V

ClientSampled :

BFOLORE



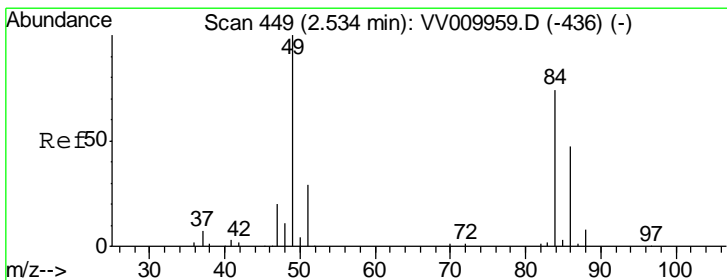
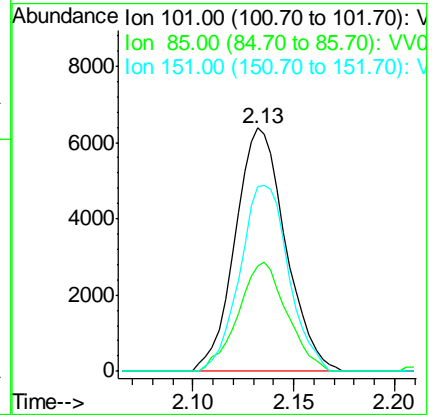
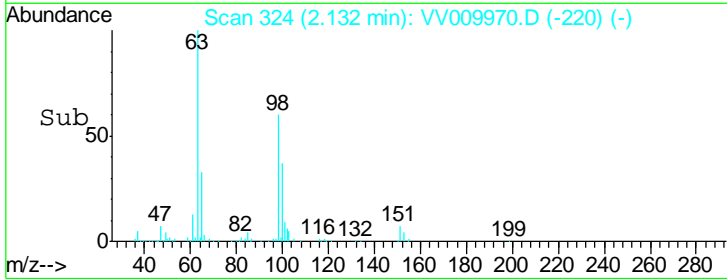
Tot Ion:101 Resp: 11141

Ion Ratio Lower Upper

101 100

85 43.4 36.9 55.3

151 74.0 63.6 95.4



#16

Methylene chloride

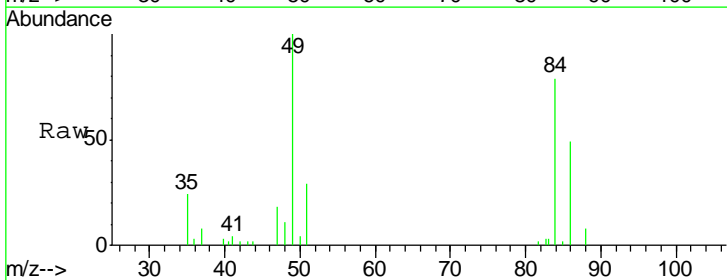
Concen: 4.888 ug/L

RT: 2.54 min Scan# 450

Delta R.T. 0.00 min

Lab File: VV009970.D

Acq: 28 Mar 2019 17:12



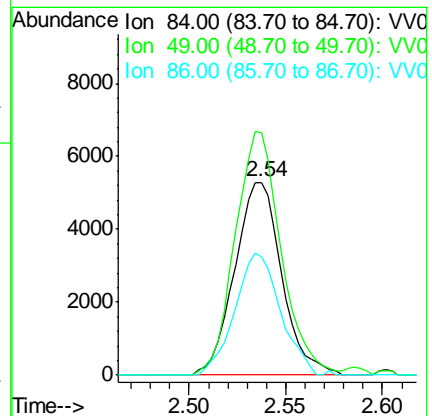
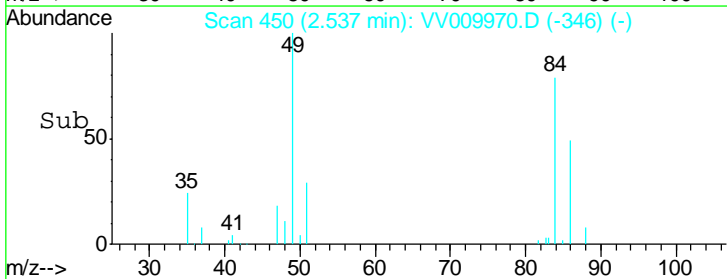
Tgt Ion: 84 Resp: 8965

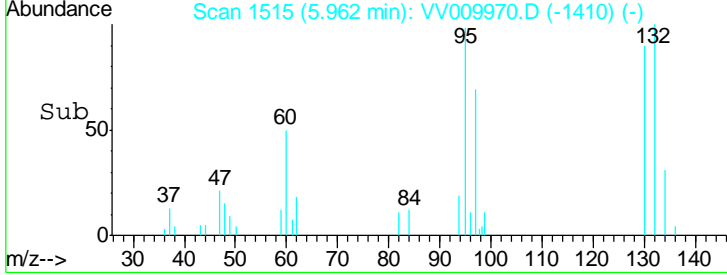
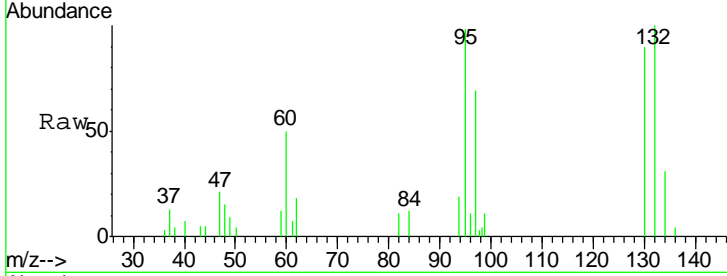
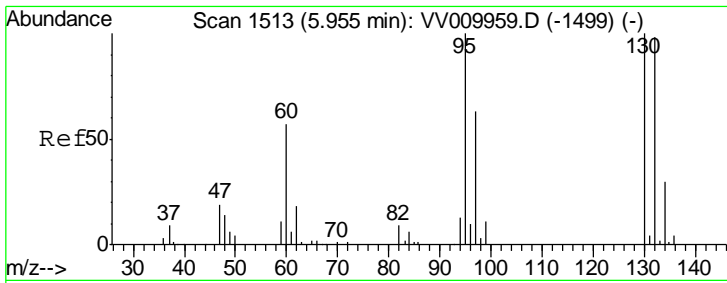
Ion Ratio Lower Upper

84 100

49 126.0 90.4 167.8

86 61.4 44.0 81.6





#35
 Trichloroethene
 Concen: 4.441 ug/L
 RT: 5.96 min Scan# 1515
 Delta R.T. 0.01 min
 Lab File: VV009970.D
 Acq: 28 Mar 2019 17:12

Instrument :
 MSVOA_V
ClientSampled :
 BFOLORE

Tot Ion: 95 Resp: 6108

Ion	Ratio	Lower	Upper
95	100		
97	74.2	46.3	85.9
132	105.7	69.3	128.7
130	108.6	69.5	129.1

