

Data Path : Z:\VOASRV\HPCHEM1\MSVOA\_V\DATA\VV032919\  
 Data File : VV009997.D  
 Acq On : 29 Mar 2019 12:59  
 Operator : SY/MD  
 Sample : VV0329SBL01  
 Misc : 5.00G/10mL/MSVOA\_V/SOIL  
 ALS Vial : 1 Sample Multiplier: 1

Instrument :  
 MSVOA\_V  
 ClientSampleId :  
 VBLK79

## Integration Parameters: LSCINT.P

Integrator: RTE  
 Smoothing : OFF  
 Sampling : 1  
 Start Thrs: 0.2  
 Stop Thrs : 0

Filtering: 5  
 Min Area: 0 % of largest Peak  
 Max Peaks: 100  
 Peak Location: TOP

If leading or trailing edge < 100 prefer < Baseline drop else tangent >  
 Peak separation: 5

Method : Z:\VOASRV\HPCHEM1\MSVOA\_V\METHOD\SOM2VLM032619S.M  
 Title : VOC Analysis

Signal : TIC

peak #	R.T. min	first scan	max scan	last scan	PK TY	peak height	corr. area	corr. % max.	% of total
1	1.319	65	71	78	rVB	135755	130508	17.80%	2.261%
2	1.566	141	148	160	rVB	141860	166116	22.66%	2.878%
3	2.126	313	322	336	rBV	359756	507329	69.20%	8.788%
4	2.290	371	373	374	rBV2	840	343	0.05%	0.006%
5	2.393	403	405	409	rVB2	473	348	0.05%	0.006%
6	2.428	409	416	417	rBV3	472	434	0.06%	0.008%
7	2.537	439	450	461	rBV2	17091	30843	4.21%	0.534%
8	2.611	471	473	476	rBV3	567	349	0.05%	0.006%
9	2.714	503	505	513	rVB5	596	717	0.10%	0.012%
10	2.795	527	530	536	rVB	846	697	0.10%	0.012%
11	2.917	564	568	571	rBV4	471	353	0.05%	0.006%
12	3.016	595	599	602	rBV3	841	620	0.08%	0.011%
13	3.074	605	617	626	rBV6	5910	11920	1.63%	0.206%
14	3.229	658	665	668	rBV3	884	919	0.13%	0.016%
15	3.618	784	786	789	rBV2	654	369	0.05%	0.006%
16	3.843	852	856	860	rBV3	710	644	0.09%	0.011%
17	3.930	872	883	900	rBV2	23148	56324	7.68%	0.976%
18	4.190	960	964	966	rBV3	567	438	0.06%	0.008%
19	4.277	987	991	993	rBV2	634	370	0.05%	0.006%
20	4.399	1011	1029	1053	rBV	116962	307435	41.93%	5.326%
21	4.614	1090	1096	1098	rBV4	628	614	0.08%	0.011%
22	4.704	1119	1124	1131	rBV4	1481	1759	0.24%	0.030%
23	4.846	1166	1168	1177	rVV3	635	565	0.08%	0.010%
24	4.974	1202	1208	1210	rVB3	516	442	0.06%	0.008%
25	5.093	1227	1245	1271	rBV2	298906	733180	100.00%	12.701%
26	5.328	1315	1318	1320	rBV3	633	397	0.05%	0.007%
27	5.389	1334	1337	1339	rBV2	584	368	0.05%	0.006%
28	5.460	1354	1359	1361	rVB3	626	463	0.06%	0.008%
29	5.473	1361	1363	1367	rBV3	836	542	0.07%	0.009%
30	5.663	1407	1422	1441	rBV2	245993	491982	67.10%	8.522%
31	5.939	1506	1508	1510	rBV	815	482	0.07%	0.008%
32	5.991	1522	1524	1529	rVB2	559	336	0.05%	0.006%
33	6.052	1540	1543	1548	rVB4	552	597	0.08%	0.010%
34	6.116	1548	1563	1585	rBV3	167509	343415	46.84%	5.949%

Data Path : Z:\VOASRV\HPCHEM1\MSVOA\_V\DATA\VV032919\  
 Data File : VV009997.D  
 Acq On : 29 Mar 2019 12:59  
 Operator : SY/MD  
 Sample : VV0329SBL01  
 Misc : 5.00G/10mL/MSVOA\_V/SOIL  
 ALS Vial : 1 Sample Multiplier: 1

Instrument :  
 MSVOA\_V  
 ClientSampleId :  
 VBLK79

## Integration Parameters: LSCINT.P

Integrator: RTE  
 Smoothing : OFF  
 Sampling : 1  
 Start Thrs: 0.2  
 Stop Thrs : 0

Filtering: 5  
 Min Area: 0 % of largest Peak  
 Max Peaks: 100  
 Peak Location: TOP

If leading or trailing edge < 100 prefer < Baseline drop else tangent >  
 Peak separation: 5

Method : Z:\VOASRV\HPCHEM1\MSVOA\_V\METHOD\SOM2VLM032619S.M  
 Title : VOC Analysis

35	6.318	1624	1626	1631	rVB2	663	440	0.06%	0.008%
36	6.364	1638	1640	1643	rVB2	826	393	0.05%	0.007%
37	6.412	1651	1655	1660	rVB2	440	337	0.05%	0.006%
38	6.454	1663	1668	1675	rVB3	904	1335	0.18%	0.023%
39	6.659	1729	1732	1735	rVV3	630	444	0.06%	0.008%
40	6.695	1735	1743	1756	rVB8	4793	10550	1.44%	0.183%
41	6.743	1756	1758	1761	rBV4	737	555	0.08%	0.010%
42	6.820	1769	1782	1792	rBV5	10326	20939	2.86%	0.363%
43	7.029	1830	1847	1861	rBV2	80910	144156	19.66%	2.497%
44	7.309	1923	1934	1939	rBV5	5666	11120	1.52%	0.193%
45	7.360	1939	1950	1968	rVV	352495	602889	82.23%	10.444%
46	7.589	2018	2021	2024	rVV3	635	401	0.05%	0.007%
47	7.662	2034	2044	2057	rBV	50915	87524	11.94%	1.516%
48	7.875	2106	2110	2113	rBV	586	489	0.07%	0.008%
49	7.891	2113	2115	2117	rBV2	663	407	0.06%	0.007%
50	7.978	2137	2142	2145	rBV3	1607	1829	0.25%	0.032%
51	8.016	2151	2154	2162	rVB5	1944	1981	0.27%	0.034%
52	8.132	2180	2190	2206	rBV	69438	127879	17.44%	2.215%
53	8.437	2281	2285	2287	rVB2	620	403	0.05%	0.007%
54	8.473	2289	2296	2300	rBV3	873	1058	0.14%	0.018%
55	8.624	2341	2343	2348	rVB2	949	642	0.09%	0.011%
56	8.653	2348	2352	2354	rBV	500	414	0.06%	0.007%
57	8.717	2369	2372	2379	rVB4	823	1096	0.15%	0.019%
58	8.897	2414	2428	2452	rBV	373656	639964	87.29%	11.086%
59	9.055	2470	2477	2483	rBV6	1847	2689	0.37%	0.047%
60	9.132	2500	2501	2506	rVB3	905	563	0.08%	0.010%
61	9.167	2506	2512	2514	rBV2	681	663	0.09%	0.011%
62	9.257	2535	2540	2541	rBV	505	350	0.05%	0.006%
63	9.585	2640	2642	2644	rBV	714	379	0.05%	0.007%
64	9.595	2644	2645	2650	rVV2	734	378	0.05%	0.007%
65	9.707	2676	2680	2684	rBV3	312	343	0.05%	0.006%
66	9.826	2713	2717	2721	rVB4	820	587	0.08%	0.010%
67	9.875	2729	2732	2736	rBV	913	663	0.09%	0.011%
68	9.907	2739	2742	2745	rVB2	574	424	0.06%	0.007%
69	9.929	2745	2749	2752	rBV3	643	525	0.07%	0.009%
70	9.984	2761	2766	2770	rBV4	1181	748	0.10%	0.013%
71	10.158	2818	2820	2824	rVB3	590	397	0.05%	0.007%

Data Path : Z:\VOASRV\HPCHEM1\MSVOA\_V\DATA\VV032919\  
 Data File : VV009997.D  
 Acq On : 29 Mar 2019 12:59  
 Operator : SY/MD  
 Sample : VV0329SBL01  
 Misc : 5.00G/10mL/MSVOA\_V/SOIL  
 ALS Vial : 1 Sample Multiplier: 1

Instrument :  
 MSVOA\_V  
 ClientSampleId :  
 VBLK79

Integration Parameters: LSCINT.P

Integrator: RTE  
 Smoothing : OFF  
 Sampling : 1  
 Start Thrs: 0.2  
 Stop Thrs : 0

Filtering: 5  
 Min Area: 0 % of largest Peak  
 Max Peaks: 100  
 Peak Location: TOP

If leading or trailing edge < 100 prefer < Baseline drop else tangent >  
 Peak separation: 5

Method : Z:\VOASRV\HPCHEM1\MSVOA\_V\METHOD\SOM2VLM032619S.M  
 Title : VOC Analysis

72	10.206	2832	2835	2837	rBV2	498	368	0.05%	0.006%
73	10.260	2841	2852	2871	rBV	137701	224187	30.58%	3.884%
74	10.424	2895	2903	2914	rVB5	5758	9740	1.33%	0.169%
75	10.604	2956	2959	2962	rBV2	607	461	0.06%	0.008%
76	10.768	3007	3010	3013	rBV2	734	437	0.06%	0.008%
77	10.788	3013	3016	3022	rVV4	546	529	0.07%	0.009%
78	11.061	3097	3101	3103	rVB	545	379	0.05%	0.007%
79	11.122	3117	3120	3122	rBV2	475	333	0.05%	0.006%
80	11.193	3135	3142	3149	rBV5	2126	3249	0.44%	0.056%
81	11.296	3163	3174	3190	rBV	329743	551997	75.29%	9.562%
82	11.672	3279	3291	3309	rBV	303869	500894	68.32%	8.677%
83	11.826	3332	3339	3341	rBV3	913	1006	0.14%	0.017%
84	11.871	3348	3353	3355	rBV3	1197	1143	0.16%	0.020%
85	11.923	3366	3369	3372	rBV2	609	490	0.07%	0.008%
86	11.984	3384	3388	3390	rBV3	483	376	0.05%	0.007%
87	12.029	3399	3402	3405	rBV2	889	652	0.09%	0.011%
88	12.145	3436	3438	3441	rVB2	617	337	0.05%	0.006%
89	12.296	3478	3485	3493	rBV2	3876	5728	0.78%	0.099%
90	12.428	3523	3526	3528	rBV2	630	456	0.06%	0.008%
91	12.701	3606	3611	3615	rBV4	1024	1013	0.14%	0.018%
92	12.797	3635	3641	3644	rVB3	725	643	0.09%	0.011%
93	13.309	3794	3800	3805	rBV7	935	1346	0.18%	0.023%
94	13.794	3945	3951	3956	rBV5	4690	5542	0.76%	0.096%
95	13.958	4000	4002	4005	rBV	671	389	0.05%	0.007%
96	14.212	4078	4081	4083	rBV2	884	440	0.06%	0.008%
97	14.678	4221	4226	4228	rBV2	641	537	0.07%	0.009%
98	14.791	4255	4261	4264	rBV5	795	926	0.13%	0.016%
99	15.016	4330	4331	4335	rBV2	551	423	0.06%	0.007%
100	15.286	4413	4415	4418	rBV	844	604	0.08%	0.010%

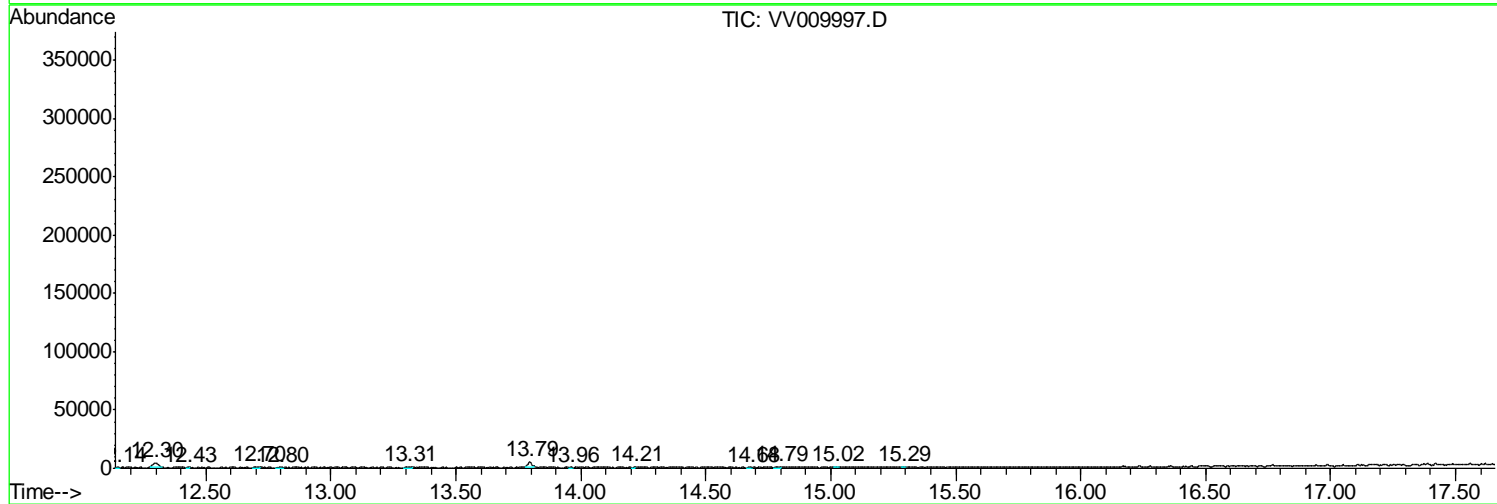
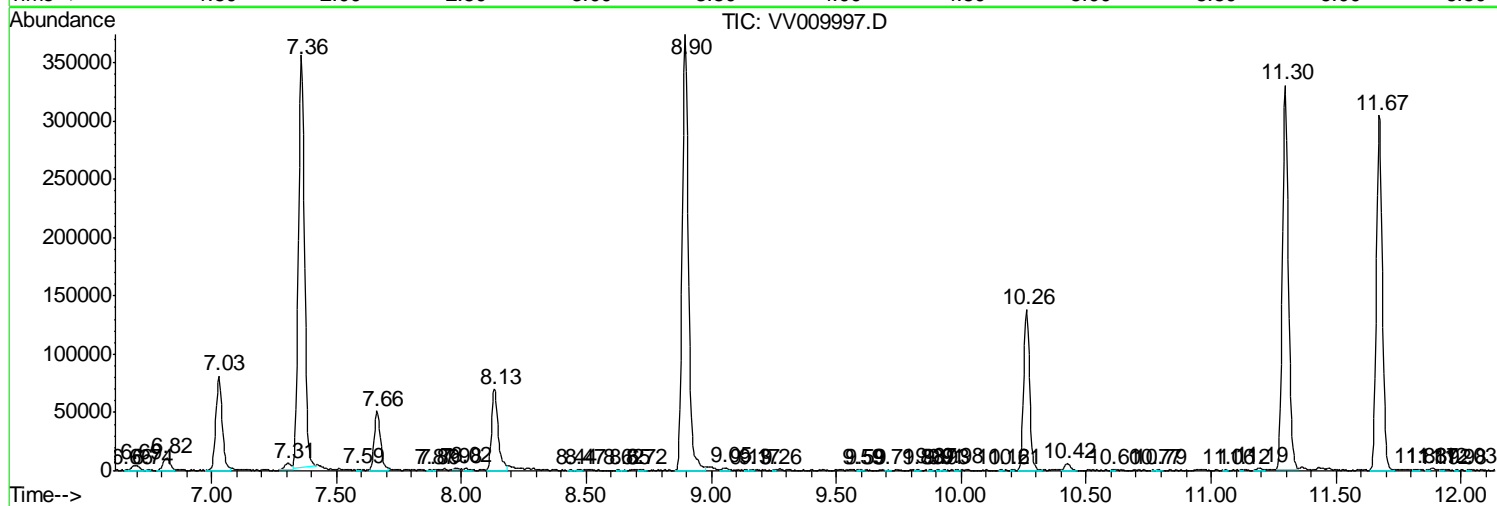
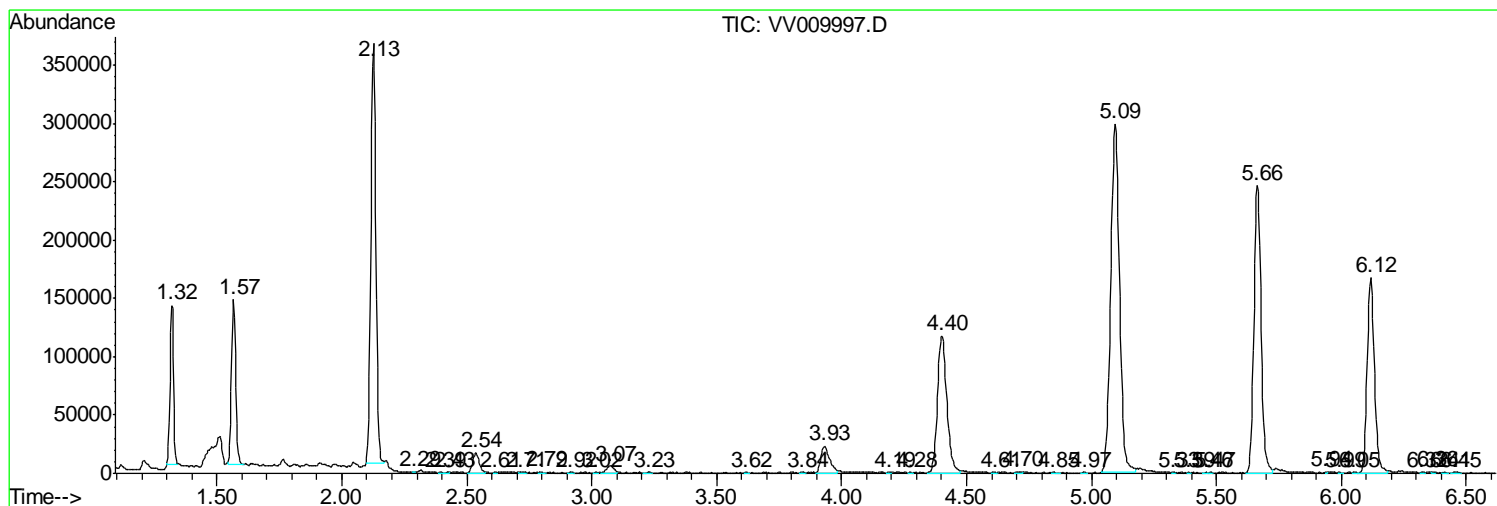
Sum of corrected areas: 5772797

Data Path : Z:\VOASRV\HPCHEM1\MSVOA\_V\DATA\VV032919\  
 Data File : VV009997.D  
 Acq On : 29 Mar 2019 12:59  
 Operator : SY/MD  
 Sample : VV0329SBL01  
 Misc : 5.00G/10mL/MSVOA\_V/SOIL  
 ALS Vial : 1 Sample Multiplier: 1

Instrument :  
 MSVOA\_V  
 ClientSampled :  
 VBLK79

Quant Method : Z:\VOASRV\HPCHEM1\MSVOA\_V\METHOD\SOM2VLM032619S.M  
 Quant Title : VOC Analysis

TIC Library : C:\DATABASE\NIST11.L  
 TIC Integration Parameters: LSCINT.P



Data Path : Z:\VOASRV\HPCHEM1\MSVOA\_V\DATA\VV032919\  
Data File : VV009997.D  
Acq On : 29 Mar 2019 12:59  
Operator : SY/MD  
Sample : VV0329SBL01  
Misc : 5.00G/10mL/MSVOA\_V/SOIL  
ALS Vial : 1 Sample Multiplier: 1

Instrument :  
MSVOA\_V  
ClientSampleId :  
VBLK79

Quant Method : Z:\VOASRV\HPCHEM1\MSVOA\_V\METHOD\SOM2VLM032619S.M  
Quant Title : VOC Analysis

TIC Library : C:\DATABASE\NIST11.L  
TIC Integration Parameters: LSCINT.P

No Library Search Compounds Detected

\*\*\*\*\*

Data Path : Z:\VOASRV\HPCHEM1\MSVOA\_V\DATA\VV032919\  
Data File : VV009997.D  
Acq On : 29 Mar 2019 12:59  
Operator : SY/MD  
Sample : VV0329SBL01  
Misc : 5.00G/10mL/MSVOA\_V/SOIL  
ALS Vial : 1 Sample Multiplier: 1

Instrument :  
MSVOA\_V  
ClientSampleId :  
VBLK79

Quant Method : Z:\VOASRV\HPCHEM1\MSVOA\_V\METHOD\SOM2VLM032619S.M  
Quant Title : VOC Analysis

TIC Library : C:\DATABASE\NIST11.L  
TIC Integration Parameters: LSCINT.P

TIC Top Hit name	RT	EstConc	Units	Response	--Internal Standard--			
					#	RT	Resp	Conc

---