

Data Path : Z:\voasrv\HPCHEM1\MSVOA_V\Data\VV032921\
 Data File : VV020798.D
 Acq On : 29 Mar 2021 12:29
 Operator : SY/MD
 Sample : M1824-12RE
 Misc : 5.0mL/MSVOA_V/WATER
 ALS Vial : 9 Sample Multiplier: 1

Instrument :
 MSVOA_V
 ClientSampleId :
 BG4T6RE

Integration Parameters: LSCINT.P

Integrator: RTE
 Smoothing : OFF Filtering: 5
 Sampling : 1 Min Area: 0 % of largest Peak
 Start Thrs: 0.2 Max Peaks: 100
 Stop Thrs : 0 Peak Location: TOP

If leading or trailing edge < 100 prefer < Baseline drop else tangent >
 Peak separation: 5

Method : Z:\voasrv\HPCHEM1\MSVOA_V\Method\SOMVLM032321WMA.M
 Title : VOC Analysis

Signal : TIC: VV020798.D\data.ms

peak #	R.T. min	first scan	max scan	last scan	PK TY	peak height	corr. area	corr. % max.	% of total
1	1.111	17	22	35	rVB	71218	66746	2.51%	0.369%
2	1.307	77	83	97	rVB	361969	368971	13.87%	2.039%
3	1.571	157	165	177	rVB	271617	308210	11.58%	1.703%
4	2.111	322	333	350	rBV	634254	945374	35.53%	5.224%
5	2.298	384	391	392	rBV4	2156	2283	0.09%	0.013%
6	2.626	491	493	495	rBV	215	58	0.00%	0.000%
7	2.638	495	497	499	rBV2	373	173	0.01%	0.001%
8	2.703	516	517	518	rBV2	281	105	0.00%	0.001%
9	2.716	519	521	524	rVV2	706	507	0.02%	0.003%
10	2.838	557	559	561	rBV2	257	106	0.00%	0.001%
11	2.867	564	568	570	rBV2	458	303	0.01%	0.002%
12	3.111	642	644	645	rBV	258	96	0.00%	0.001%
13	3.143	649	654	657	rVB2	298	227	0.01%	0.001%
14	3.156	657	658	659	rBV	319	94	0.00%	0.001%
15	3.198	669	671	673	rBV	556	319	0.01%	0.002%
16	3.262	686	691	693	rBV2	516	441	0.02%	0.002%
17	3.355	716	720	722	rVV2	538	332	0.01%	0.002%
18	3.368	722	724	727	rVB	234	102	0.00%	0.001%
19	3.407	734	736	737	rBV	198	86	0.00%	0.000%
20	3.420	737	740	743	rVV	360	242	0.01%	0.001%
21	3.513	767	769	771	rBV2	569	266	0.01%	0.001%
22	3.574	786	788	790	rBV2	281	119	0.00%	0.001%
23	3.587	790	792	795	rVV	378	242	0.01%	0.001%
24	3.613	796	800	802	rVB3	416	275	0.01%	0.002%
25	3.690	822	824	826	rBV	230	118	0.00%	0.001%
26	3.828	865	867	870	rBV2	701	292	0.01%	0.002%
27	3.886	874	885	918	rBV	160256	456783	17.17%	2.524%
28	4.352	1014	1030	1059	rBV	465801	1140092	42.85%	6.300%
29	4.757	1151	1156	1160	rBV5	1093	1526	0.06%	0.008%
30	4.950	1214	1216	1218	rBV2	490	324	0.01%	0.002%
31	4.976	1221	1224	1227	rVB	1087	570	0.02%	0.003%
32	5.050	1229	1247	1277	rBV2	1035652	2660924	100.00%	14.703%
33	5.452	1367	1372	1375	rVB5	827	832	0.03%	0.005%
34	5.484	1375	1382	1384	rBV4	1398	1364	0.05%	0.008%
35	5.535	1394	1398	1400	rBV4	808	543	0.02%	0.003%
36	5.571	1406	1409	1410	rBV	991	420	0.02%	0.002%

Data Path : Z:\voasrv\HPCHEM1\MSVOA_V\Data\VW032921\
 Data File : VW020798.D
 Acq On : 29 Mar 2021 12:29
 Operator : SY/MD
 Sample : M1824-12RE
 Misc : 5.0mL/MSVOA_V/WATER
 ALS Vial : 9 Sample Multiplier: 1

Instrument :
 MSVOA_V
 ClientSampleId :
 BG4T6RE

Integration Parameters: LSCINT.P

Integrator: RTE
 Smoothing : OFF Filtering: 5
 Sampling : 1 Min Area: 0 % of largest Peak
 Start Thrs: 0.2 Max Peaks: 100
 Stop Thrs : 0 Peak Location: TOP

If leading or trailing edge < 100 prefer < Baseline drop else tangent >
 Peak separation: 5

Method : Z:\voasrv\HPCHEM1\MSVOA_V\Method\SOMVLM032321WMA.M
 Title : VOC Analysis

37	5.622	1412	1425	1456	rVV	465845	950045	35.70%	5.250%
38	5.912	1505	1515	1533	rBV6	15488	33945	1.28%	0.188%
39	6.072	1552	1565	1588	rBV	575063	1157323	43.49%	6.395%
40	6.375	1657	1659	1663	rVB4	998	672	0.03%	0.004%
41	6.487	1692	1694	1696	rBV2	394	150	0.01%	0.001%
42	6.500	1696	1698	1700	rVV2	492	201	0.01%	0.001%
43	6.539	1709	1710	1714	rVB2	539	313	0.01%	0.002%
44	6.622	1734	1736	1739	rBV3	399	247	0.01%	0.001%
45	6.680	1752	1754	1761	rVB4	1185	1094	0.04%	0.006%
46	6.709	1761	1763	1765	rBV	418	261	0.01%	0.001%
47	6.989	1838	1850	1870	rBV	337014	611986	23.00%	3.382%
48	7.320	1940	1953	1976	rBV	1237251	2137668	80.34%	11.812%
49	7.625	2038	2048	2073	rBV	235344	419413	15.76%	2.318%
50	8.092	2181	2193	2227	rBV	585476	1081895	40.66%	5.978%
51	8.735	2390	2393	2394	rBV	585	331	0.01%	0.002%
52	8.857	2419	2431	2451	rBV	728043	1183839	44.49%	6.542%
53	9.014	2477	2480	2482	rBV3	1381	950	0.04%	0.005%
54	9.124	2512	2514	2516	rBV	439	212	0.01%	0.001%
55	9.326	2574	2577	2580	rBV3	777	539	0.02%	0.003%
56	9.397	2596	2599	2600	rBV	396	208	0.01%	0.001%
57	9.432	2605	2610	2611	rBV2	1336	1020	0.04%	0.006%
58	9.593	2657	2660	2661	rBV2	700	396	0.01%	0.002%
59	9.738	2704	2705	2708	rBV2	425	173	0.01%	0.001%
60	9.809	2725	2727	2729	rBV2	618	325	0.01%	0.002%
61	9.899	2751	2755	2756	rBV2	374	289	0.01%	0.002%
62	10.101	2815	2818	2820	rBV2	954	531	0.02%	0.003%
63	10.220	2843	2855	2878	rBV	805011	1276385	47.97%	7.053%
64	10.381	2898	2905	2906	rBV6	2910	2601	0.10%	0.014%
65	10.474	2932	2934	2936	rBV2	583	278	0.01%	0.002%
66	10.497	2939	2941	2945	rBV2	468	309	0.01%	0.002%
67	10.583	2964	2968	2972	rVB4	952	687	0.03%	0.004%
68	10.603	2972	2974	2975	rBV	771	299	0.01%	0.002%
69	10.915	3068	3071	3073	rBV2	1001	669	0.03%	0.004%
70	10.979	3085	3091	3094	rVB4	1540	1422	0.05%	0.008%
71	11.165	3142	3149	3154	rBV7	2936	4511	0.17%	0.025%
72	11.255	3165	3177	3201	rBV	752783	1178651	44.29%	6.513%
73	11.632	3280	3294	3311	rBV	1336838	2076122	78.02%	11.472%
74	12.217	3474	3476	3480	rVB2	875	518	0.02%	0.003%
75	12.358	3515	3520	3527	rVB7	6788	9364	0.35%	0.052%
76	12.976	3709	3712	3716	rBV3	917	802	0.03%	0.004%

Data Path : Z:\voasrv\HPCHEM1\MSVOA_V\Data\VV032921\
Data File : VV020798.D
Acq On : 29 Mar 2021 12:29
Operator : SY/MD
Sample : M1824-12RE
Misc : 5.0mL/MSVOA_V/WATER
ALS Vial : 9 Sample Multiplier: 1

Instrument :
MSVOA_V
ClientSampleId :
BG4T6RE

Integration Parameters: LSCINT.P
Integrator: RTE
Smoothing : OFF Filtering: 5
Sampling : 1 Min Area: 0 % of largest Peak
Start Thrs: 0.2 Max Peaks: 100
Stop Thrs : 0 Peak Location: TOP

If leading or trailing edge < 100 prefer < Baseline drop else tangent >
Peak separation: 5

Method : Z:\voasrv\HPCHEM1\MSVOA_V\Method\SOMVLM032321WMA.M
Title : VOC Analysis

77	13.085	3744	3746	3749	rBV2	810	399	0.01%	0.002%
78	13.204	3778	3783	3785	rBV2	748	725	0.03%	0.004%

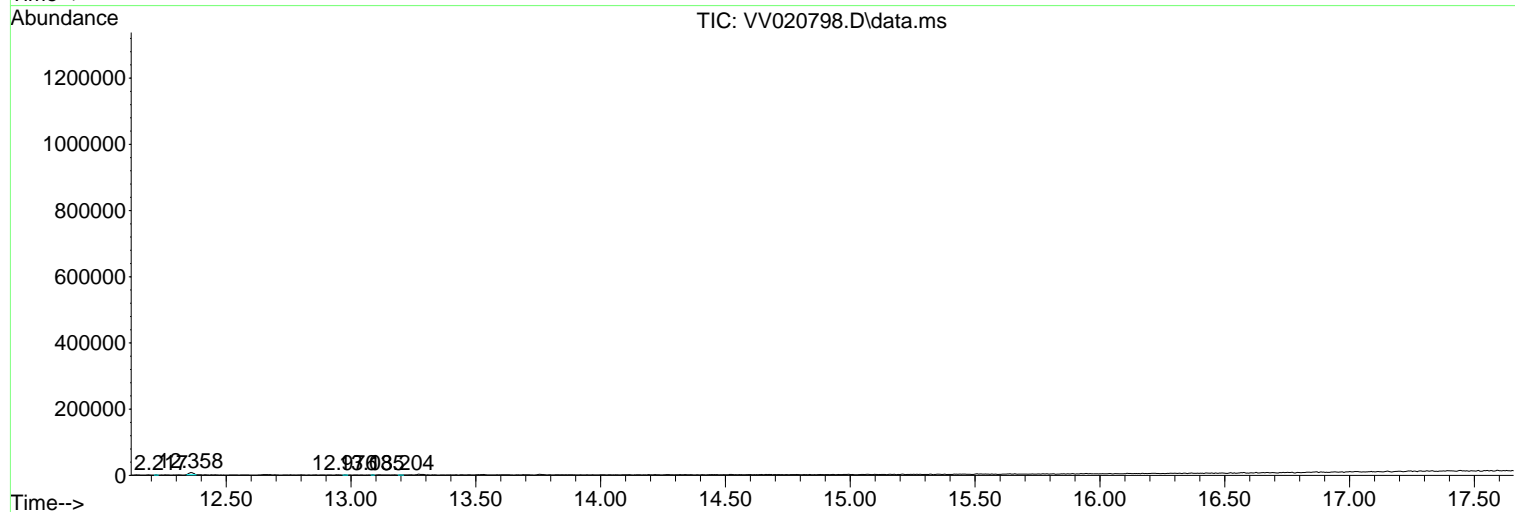
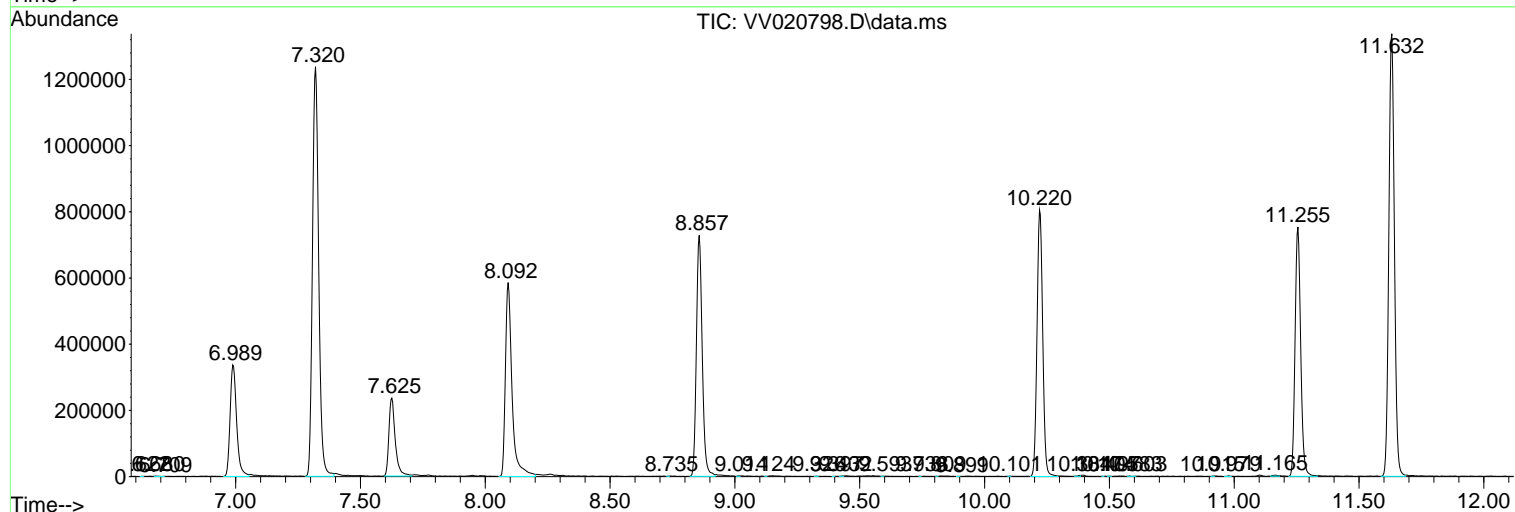
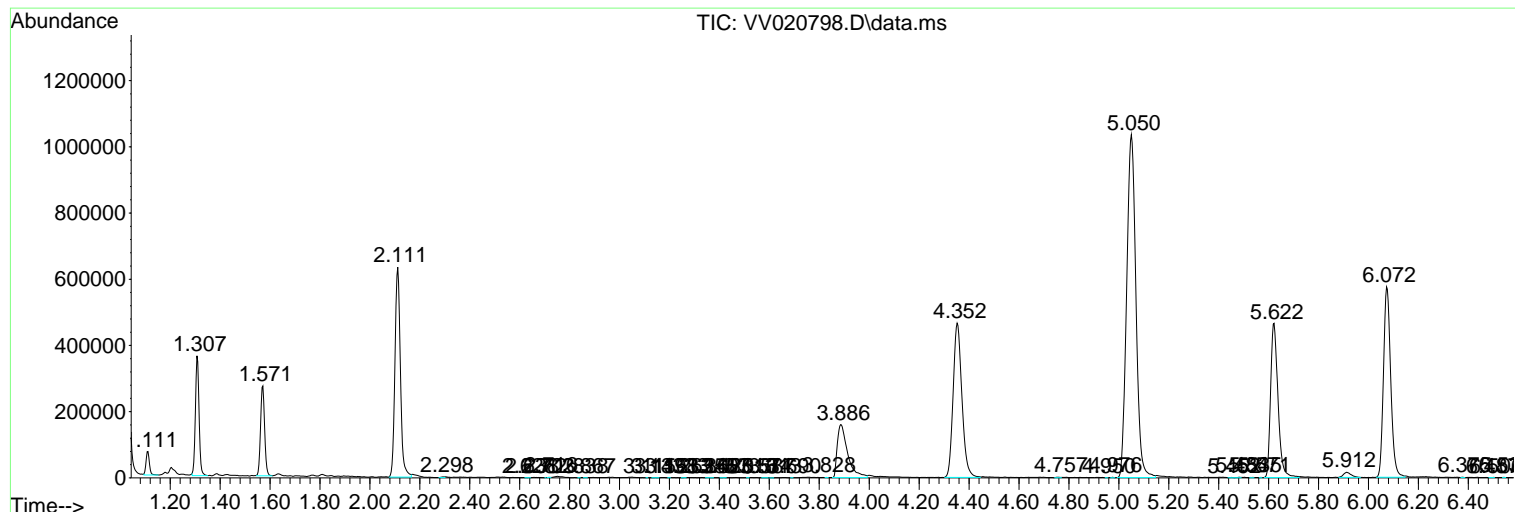
Sum of corrected areas: 18097233

Data Path : Z:\voasrv\HPCHEM1\MSVOA_V\Data\VV032921\
 Data File : VV020798.D
 Acq On : 29 Mar 2021 12:29
 Operator : SY/MD
 Sample : M1824-12RE
 Misc : 5.0mL/MSVOA_V/WATER
 ALS Vial : 9 Sample Multiplier: 1

Instrument :
 MSVOA_V
 ClientSampled :
 BG4T6RE

Quant Method : Z:\voasrv\HPCHEM1\MSVOA_V\Method\SOMVLM032321WMA.M
 Quant Title : VOC Analysis

TIC Library : C:\DATABASE\NIST11.L
 TIC Integration Parameters: LSCINT.P



Data Path : Z:\voasrv\HPCHEM1\MSVOA_V\Data\VV032921\
 Data File : VV020798.D
 Acq On : 29 Mar 2021 12:29
 Operator : SY/MD
 Sample : M1824-12RE
 Misc : 5.0mL/MSVOA_V/WATER
 ALS Vial : 9 Sample Multiplier: 1

Instrument :
 MSVOA_V
 ClientSampleId :
 BG4T6RE

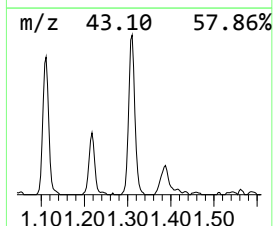
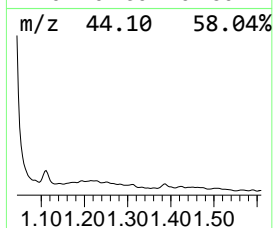
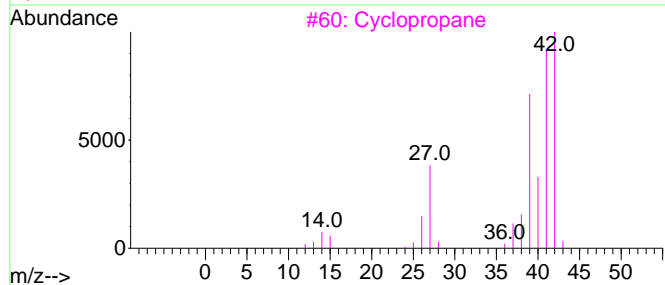
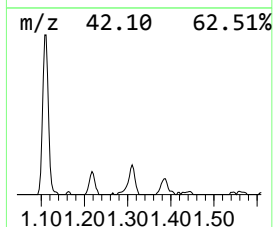
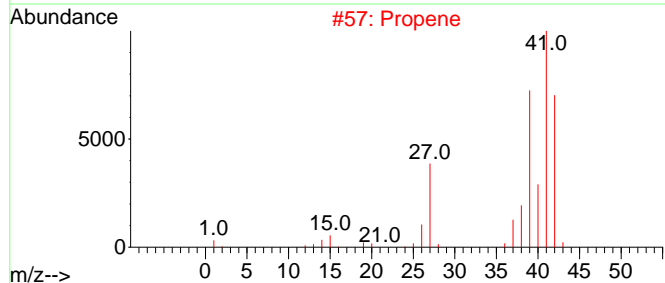
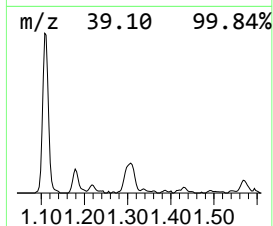
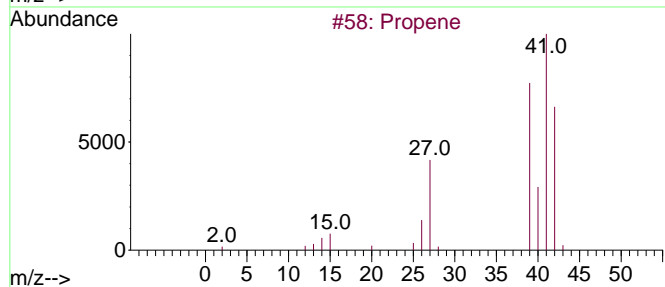
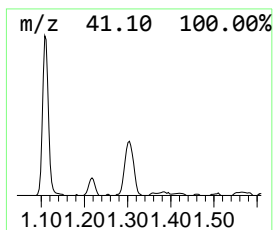
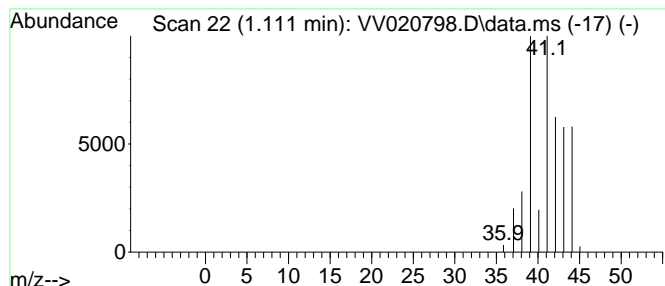
Quant Method : Z:\voasrv\HPCHEM1\MSVOA_V\Method\SOMVLM032321WMA.M
 Quant Title : VOC Analysis

TIC Library : C:\DATABASE\NIST11.L
 TIC Integration Parameters: LSCINT.P

 Peak Number 1 (DEL) Alkane: Straight-Chai... Concentration Rank 2

R.T.	EstConc	Area	Relative to ISTD	R.T.
1.111	3.51 ug/L	66746	1,4-Difluorobenzene	5.622

Hit#	of 5	Tentative ID	MW	MolForm	CAS#	Qual
1		Propene	42	C3H6	000115-07-1	9
2		Propene	42	C3H6	000115-07-1	9
3		Cyclopropane	42	C3H6	000075-19-4	4
4		Cyclopropane	42	C3H6	000075-19-4	4
5		Cyclopropene	40	C3H4	002781-85-3	4



Data Path : Z:\voasrv\HPCHEM1\MSVOA_V\Data\VV032921\
Data File : VV020798.D
Acq On : 29 Mar 2021 12:29
Operator : SY/MD
Sample : M1824-12RE
Misc : 5.0mL/MSVOA_V/WATER
ALS Vial : 9 Sample Multiplier: 1

Instrument :
MSVOA_V
ClientSampled :
BG4T6RE

Quant Method : Z:\voasrv\HPCHEM1\MSVOA_V\Method\SOMVLM032321WMA.M
Quant Title : VOC Analysis

TIC Library : C:\DATABASE\NIST11.L
TIC Integration Parameters: LSCINT.P

TIC Top Hit name	RT	EstConc	Units	Response	--Internal Standard--			
					#	RT	Resp	Conc
(DEL) Alkane: S...	1.111	3.5	ug/L	66746	1	5.622	950045	50.0