

Data Path : Z:\VOASRV\HPCHEM1\MSVOA V\DATA\VV033019\
 Data File : VV010027.D
 Acq On : 30 Mar 2019 18:29
 Operator : SY/MD
 Sample : K2166-12
 Misc : 6.23G/10mL/MSVOA V/SOIL
 ALS Vial : 1 Sample Multiplier: 1

Instrument :
 MSVOA_V
Client Sampled :
 BF0L7

Manual Integrations
APPROVED
 MMDadoda
 4/1/2019 4:01:38 AM

Quant Time: Mar 31 21:17:36 2019
 Quant Method : Z:\VOASRV\HPCHEM1\MSVOA_V\METHOD\SOM2VLM032619S.M
 Quant Title : VOC Analysis
 QLast Update : Sat Mar 30 23:31:11 2019
 Response via : Initial Calibration

Internal Standards	R.T.	QIon	Response	Conc	Units	Dev(Min)
1) 1,4-Difluorobenzene	5.67	114	146223	25.00	ug/L	0.00
28) Chlorobenzene-d5	8.90	117	148132	25.00	ug/L	0.00
60) 1,4-Dichlorobenzene-d4	11.30	152	61456	25.00	ug/L	0.00

System Monitoring Compounds

4) Vinyl Chloride-d3	1.32	65	57855	19.50	ug/L	0.00
Spiked Amount	25.000	Range	30 - 150	Recovery	=	78.00%
7) Chloroethane-d5	1.56	69	73357	22.89	ug/L	0.00
Spiked Amount	25.000	Range	30 - 150	Recovery	=	91.56%
10) 1,1-Dichloroethene-d2	2.12	63	134056	16.52	ug/L	0.00
Spiked Amount	25.000	Range	45 - 110	Recovery	=	66.08%
20) 2-Butanone-d5	3.94	46	26140	47.27	ug/L	0.00
Spiked Amount	50.000	Range	20 - 135	Recovery	=	94.54%
24) Chloroform-d	4.40	84	71591	19.22	ug/L	0.00
Spiked Amount	25.000	Range	40 - 150	Recovery	=	76.88%
26) 1,2-Dichloroethane-d4	5.08	65	54722	24.41	ug/L	0.00
Spiked Amount	25.000	Range	70 - 130	Recovery	=	97.64%
29) Benzene-d6	5.10	84	181729	23.36	ug/L	0.00
Spiked Amount	25.000	Range	20 - 135	Recovery	=	93.44%
33) 1,2-Dichloropropane-d6	6.12	67	56599	24.87	ug/L	0.00
Spiked Amount	25.000	Range	70 - 120	Recovery	=	99.48%
37) Toluene-d8	7.36	98	155077	21.06	ug/L	0.00
Spiked Amount	25.000	Range	30 - 130	Recovery	=	84.24%
38) trans-1,3-Dichloropropene-	7.66	79	15504	16.65	ug/L	0.00
Spiked Amount	25.000	Range	30 - 135	Recovery	=	66.60%
39) 2-Hexanone-d5	8.13	63	20575	48.43	ug/L	0.00
Spiked Amount	50.000	Range	20 - 135	Recovery	=	96.86%
48) 1,1,2,2-Tetrachloroethane-	10.26	84	49401	21.92	ug/L	0.00
Spiked Amount	25.000	Range	45 - 120	Recovery	=	87.68%
61) 1,2-Dichlorobenzene-d4	11.68	152	57754	24.68	ug/L	0.00
Spiked Amount	25.000	Range	75 - 120	Recovery	=	98.72%

Target Compounds

Target Compounds	R.T.	QIon	Response	Conc	Units	Ovalue
16) Methylene chloride	2.53	84	4806	1.996	ug/L	94
22) cis-1,2-Dichloroethene	3.96	96	2996m	1.416	ug/L	
35) Trichloroethene	5.96	95	6176	2.878	ug/L	90
47) Tetrachloroethene	8.02	164	1887584	1114.831	ug/L	96

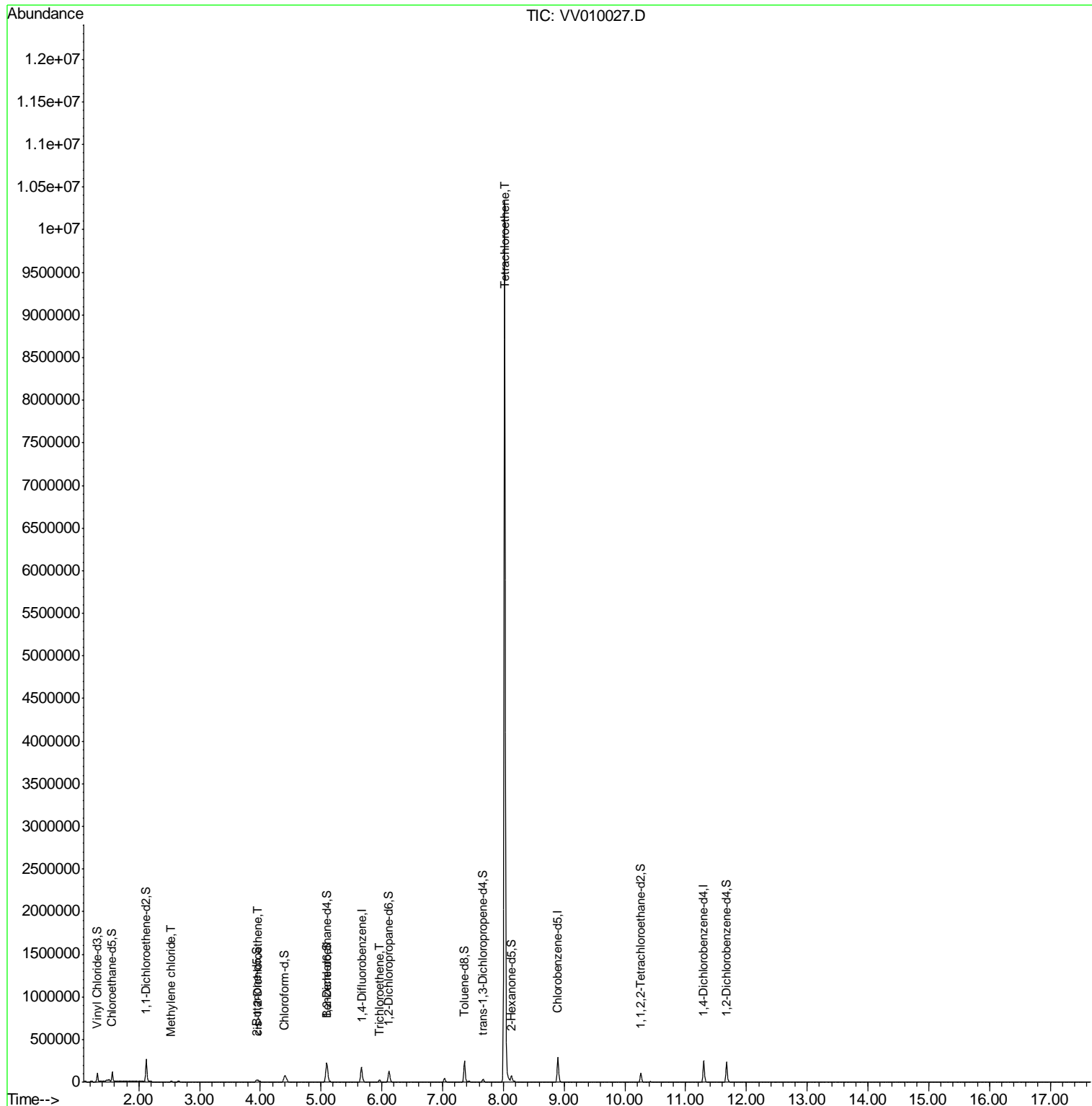
(#) = qualifier out of range (m) = manual integration (+) = signals summed

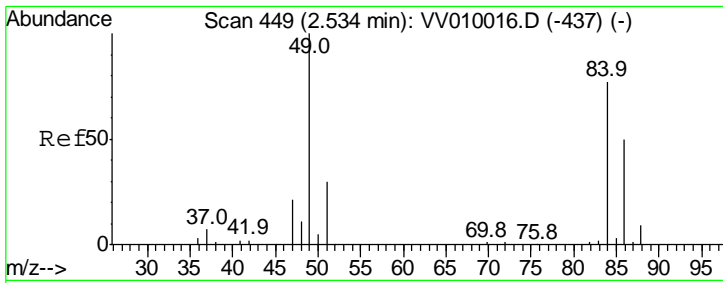
Data Path : Z:\VOASRV\HPCHEM1\MSVOA V\DATA\VV033019\
 Data File : VV010027.D
 Acq On : 30 Mar 2019 18:29
 Operator : SY/MD
 Sample : K2166-12
 Misc : 6.23G/10mL/MSVOA V/SOIL
 ALS Vial : 1 Sample Multiplier: 1

Instrument :
 MSVOA_V
 Client Sampled :
 BF0L7

Manual Integrations
APPROVED
 MMDadoda
 4/1/2019 4:01:38 AM

Quant Time: Mar 31 21:17:36 2019
 Quant Method : Z:\VOASRV\HPCHEM1\MSVOA_V\METHOD\SOM2VLM032619S.M
 Quant Title : VOC Analysis
 QLast Update : Sat Mar 30 23:31:11 2019
 Response via : Initial Calibration





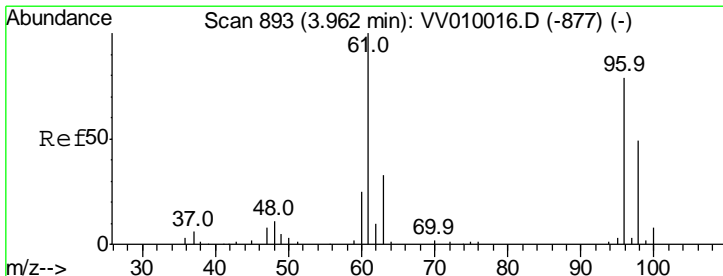
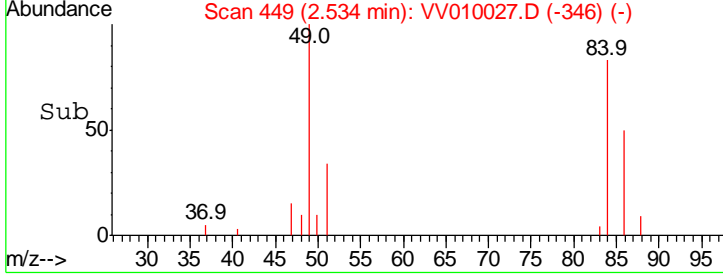
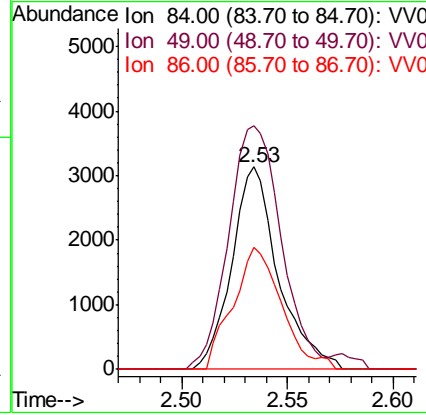
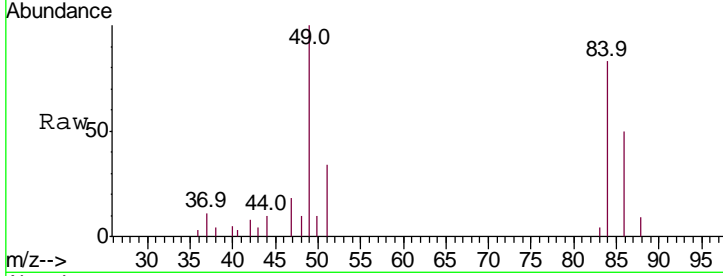
#16
 Methylene chloride
 Concen: 1.996 ug/L
 RT: 2.53 min Scan# 449
 Delta R.T. 0.00 min
 Lab File: VV010027.D
 Acq: 30 Mar 2019 18:29

Instrument : MSVOA_V
 ClientSampled : BF0L7

Tgt Ion	Ratio	Lower	Upper
84	100		
49	120.2	90.4	167.8
86	59.9	44.0	81.6

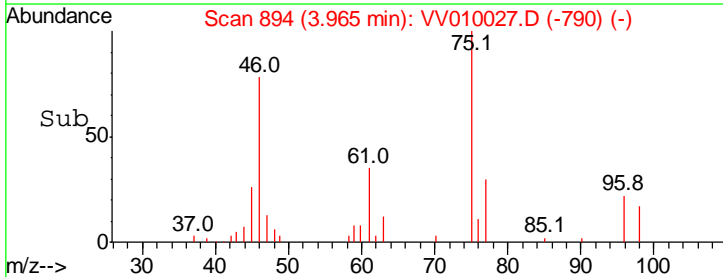
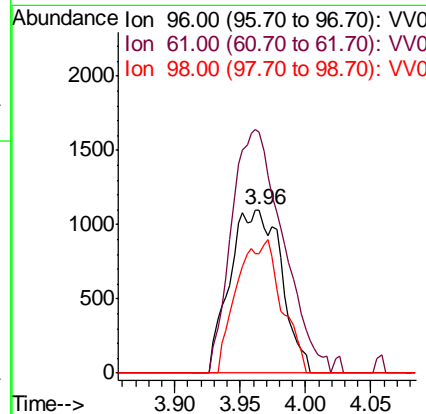
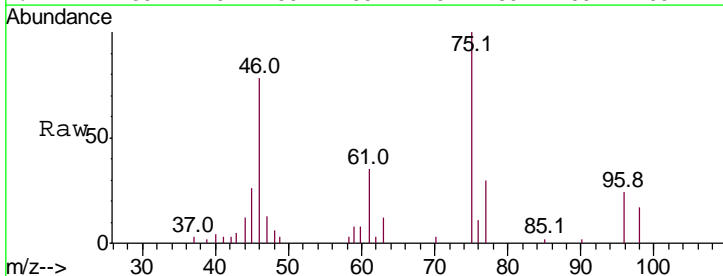
Manual Integrations
 APPROVED

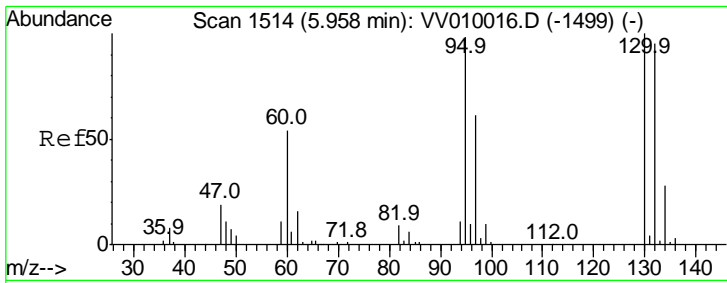
MMDadoda
 4/1/2019 4:01:38 AM



#22
 cis-1,2-Dichloroethene
 Concen: 1.416 ug/L m
 RT: 3.96 min Scan# 894
 Delta R.T. 0.00 min
 Lab File: VV010027.D
 Acq: 30 Mar 2019 18:29

Tgt Ion	Ratio	Lower	Upper
96	100		
61	147.7	91.4	169.8
98	72.8	48.0	89.2



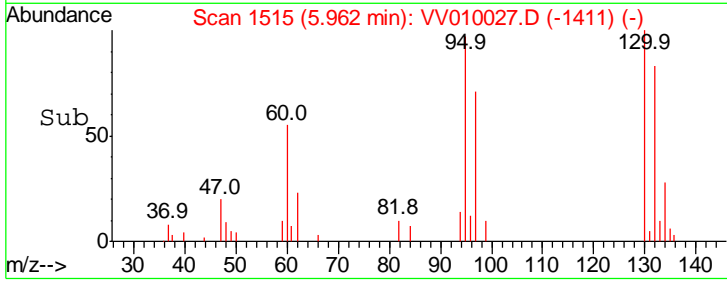
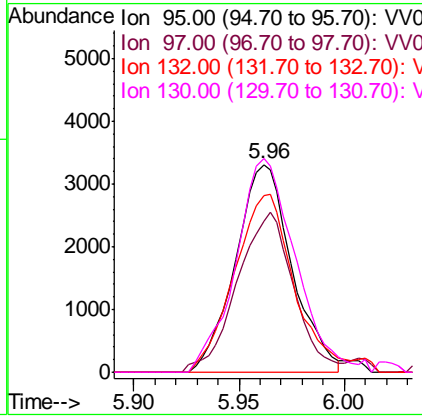
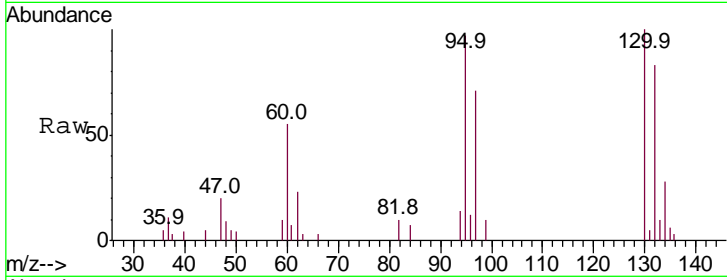


#35
 Trichloroethene
 Concen: 2.878 ug/L
 RT: 5.96 min Scan# 1515
 Delta R.T. 0.00 min
 Lab File: VV010027.D
 Acq: 30 Mar 2019 18:29

Instrument : MSVOA_V
 ClientSampled : BF0L7

Tgt Ion	Resp	Lower	Upper
95	100		
97	76.6	46.3	85.9
132	90.6	69.3	128.7
130	108.1	69.5	129.1

Manual Integrations
APPROVED
 MMDadoda
 4/1/2019 4:01:38 AM



#47
 Tetrachloroethene
 Concen: 1114.831 ug/L
 RT: 8.02 min Scan# 2156
 Delta R.T. 0.01 min
 Lab File: VV010027.D
 Acq: 30 Mar 2019 18:29

Tgt Ion	Resp	Lower	Upper
164	100		
129	93.8	64.9	120.5
131	90.1	62.0	115.2
166	125.9	82.9	153.9

