

Data Path : Z:\voasrv\HPCHEM1\MSVOA_V\Data\VW033023\
 Data File : VW030363.D
 Acq On : 30 Mar 2023 16:44
 Operator : SY/MD
 Sample : 02092-22
 Misc : 25.0mL/MSVOA_V/WATER
 ALS Vial : 20 Sample Multiplier: 1

Instrument :
 MSVOA_V
 ClientSampleId :
 CB996

Quant Time: Mar 31 05:42:18 2023
 Quant Method : Z:\voasrv\HPCHEM1\MSVOA_V\Method\SFAMVTR032323WMA.M
 Quant Title : TRACE VOA SFAM1.0
 QLast Update : Fri Mar 31 05:37:21 2023
 Response via : Initial Calibration

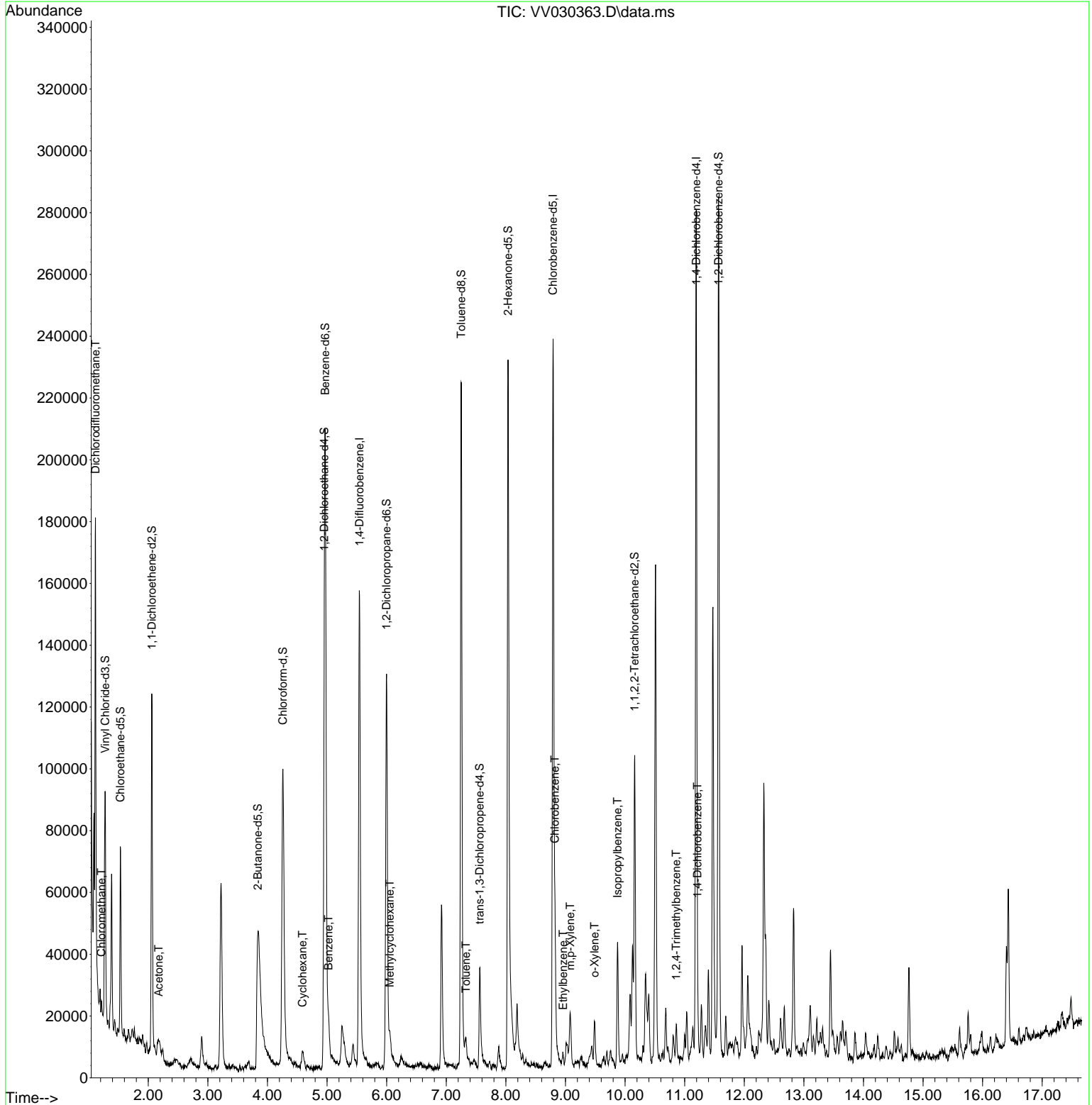
| Compound | R.T. | QIon | Response | Conc | Units | Dev(Min) |
|-------------------------------|--------|----------------|----------|--------|----------|----------|
| ----- | | | | | | |
| Internal Standards | | | | | | |
| 1) 1,4-Difluorobenzene | 5.542 | 114 | 131942 | 5.000 | ug/L | 0.00 |
| 28) Chlorobenzene-d5 | 8.793 | 117 | 124748 | 5.000 | ug/L | 0.00 |
| 58) 1,4-Dichlorobenzene-d4 | 11.194 | 152 | 67448 | 5.000 | ug/L | 0.00 |
| System Monitoring Compounds | | | | | | |
| 4) Vinyl Chloride-d3 | 1.278 | 65 | 34019 | 3.893 | ug/L | 0.00 |
| Spiked Amount | 5.000 | Range 40 - 130 | Recovery | = | 77.800% | |
| 7) Chloroethane-d5 | 1.532 | 69 | 37328 | 4.402 | ug/L | 0.00 |
| Spiked Amount | 5.000 | Range 65 - 130 | Recovery | = | 88.000% | |
| 11) 1,1-Dichloroethene-d2 | 2.060 | 63 | 58519 | 2.822 | ug/L | 0.00 |
| Spiked Amount | 5.000 | Range 60 - 125 | Recovery | = | 56.400%# | |
| 20) 2-Butanone-d5 | 3.838 | 46 | 100649 | 44.561 | ug/L | 0.02 |
| Spiked Amount | 50.000 | Range 40 - 130 | Recovery | = | 89.120% | |
| 24) Chloroform-d | 4.259 | 84 | 102959 | 4.868 | ug/L | 0.00 |
| Spiked Amount | 5.000 | Range 70 - 125 | Recovery | = | 97.400% | |
| 26) 1,2-Dichloroethane-d4 | 4.953 | 65 | 53360 | 5.347 | ug/L | 0.00 |
| Spiked Amount | 5.000 | Range 70 - 130 | Recovery | = | 107.000% | |
| 32) Benzene-d6 | 4.970 | 84 | 180404 | 5.132 | ug/L | 0.00 |
| Spiked Amount | 5.000 | Range 70 - 125 | Recovery | = | 102.600% | |
| 36) 1,2-Dichloropropane-d6 | 5.998 | 67 | 59635 | 5.419 | ug/L | 0.00 |
| Spiked Amount | 5.000 | Range 60 - 140 | Recovery | = | 108.400% | |
| 41) Toluene-d8 | 7.249 | 98 | 149252 | 4.623 | ug/L | 0.00 |
| Spiked Amount | 5.000 | Range 70 - 130 | Recovery | = | 92.400% | |
| 43) trans-1,3-Dichloroprop... | 7.561 | 79 | 19429 | 4.689 | ug/L | 0.00 |
| Spiked Amount | 5.000 | Range 55 - 130 | Recovery | = | 93.800% | |
| 46) 2-Hexanone-d5 | 8.037 | 63 | 87326 | 52.446 | ug/L | 0.00 |
| Spiked Amount | 50.000 | Range 45 - 130 | Recovery | = | 104.900% | |
| 56) 1,1,2,2-Tetrachloroeth... | 10.162 | 84 | 44950 | 5.182 | ug/L | 0.00 |
| Spiked Amount | 5.000 | Range 65 - 120 | Recovery | = | 103.600% | |
| 66) 1,2-Dichlorobenzene-d4 | 11.571 | 152 | 70218 | 5.825 | ug/L | 0.00 |
| Spiked Amount | 5.000 | Range 80 - 120 | Recovery | = | 116.400% | |
| Target Compounds | | | | | | |
| | | | | | | Qvalue |
| 2) Dichlorodifluoromethane | 1.114 | 85 | 2121 | 0.126 | ug/L # | 84 |
| 3) Chloromethane | 1.214 | 50 | 4696 | 0.222 | ug/L | 99 |
| 13) Acetone | 2.175 | 43 | 21202 | 9.816 | ug/L | 79 |
| 30) Cyclohexane | 4.587 | 56 | 2922 | 0.160 | ug/L | 93 |
| 33) Benzene | 5.024 | 78 | 11714 | 0.264 | ug/L | 100 |
| 35) Methylcyclohexane | 6.053 | 83 | 3035 | 0.162 | ug/L | 89 |
| 42) Toluene | 7.330 | 91 | 5236 | 0.111 | ug/L | 94 |
| 51) Chlorobenzene | 8.822 | 112 | 22853 | 0.756 | ug/L | 98 |
| 52) Ethylbenzene | 8.960 | 91 | 2295 | 0.044 | ug/L | 91 |
| 53) m,p-Xylene | 9.082 | 106 | 3804 | 0.192 | ug/L | 90 |
| 54) o-Xylene | 9.487 | 106 | 3764 | 0.199 | ug/L | 94 |
| 60) Isopropylbenzene | 9.876 | 105 | 23324 | 0.469 | ug/L | 98 |
| 63) 1,2,4-Trimethylbenzene | 10.860 | 105 | 5731 | 0.139 | ug/L | 97 |
| 65) 1,4-Dichlorobenzene | 11.217 | 146 | 3003 | 0.120 | ug/L | 96 |
| ----- | | | | | | |

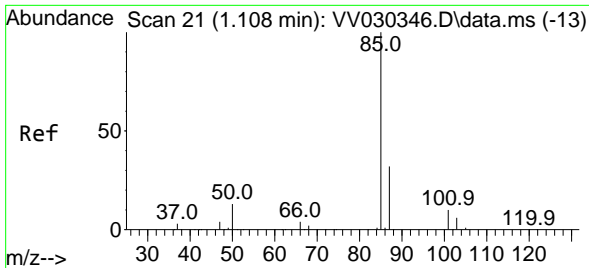
(#) = qualifier out of range (m) = manual integration (+) = signals summed

Data Path : Z:\voasrv\HPCHEM1\MSVOA_V\Data\VV033023\
 Data File : VV030363.D
 Acq On : 30 Mar 2023 16:44
 Operator : SY/MD
 Sample : 02092-22
 Misc : 25.0mL/MSVOA_V/WATER
 ALS Vial : 20 Sample Multiplier: 1

Instrument :
 MSVOA_V
 ClientSampleId :
 CB996

Quant Time: Mar 31 05:42:18 2023
 Quant Method : Z:\voasrv\HPCHEM1\MSVOA_V\Method\SFAMVTR032323WMA.M
 Quant Title : TRACE VOA SFAM1.0
 QLast Update : Fri Mar 31 05:37:21 2023
 Response via : Initial Calibration

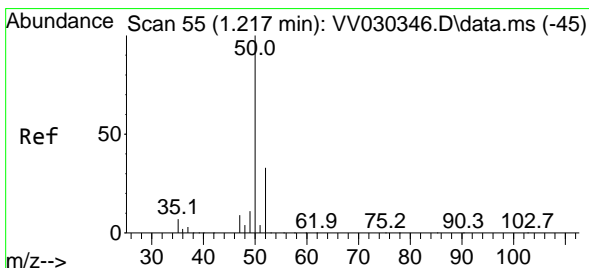
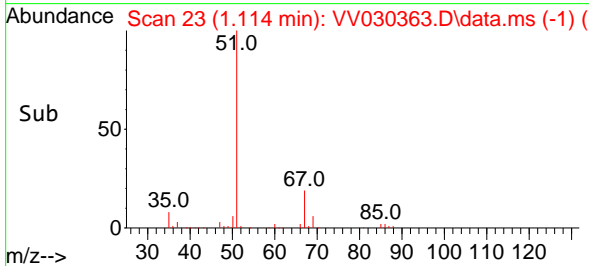
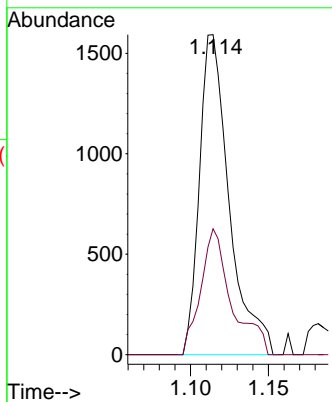
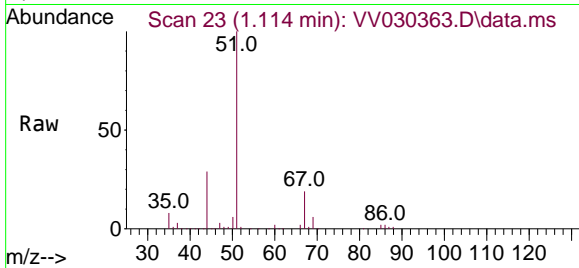




#2
 Dichlorodifluoromethane
 Concen: 0.126 ug/L
 RT: 1.114 min Scan# 21
 Delta R.T. 0.006 min
 Lab File: VV030363.D
 Acq: 30 Mar 2023 16:44

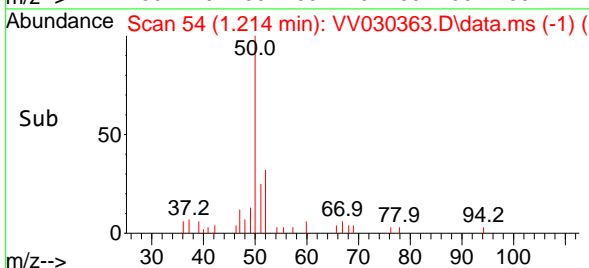
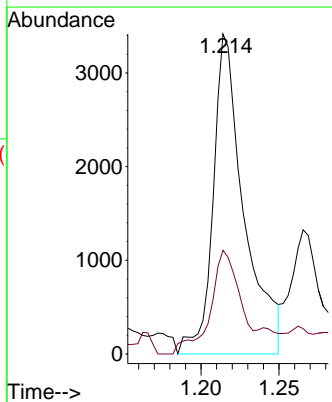
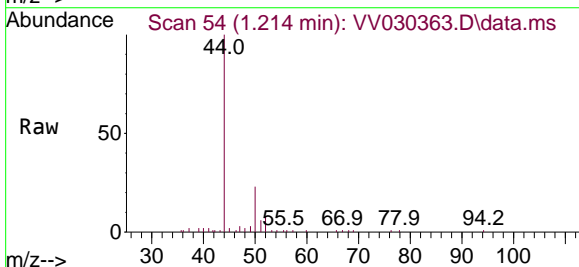
Instrument : MSVOA_V
 ClientSampleId : CB996

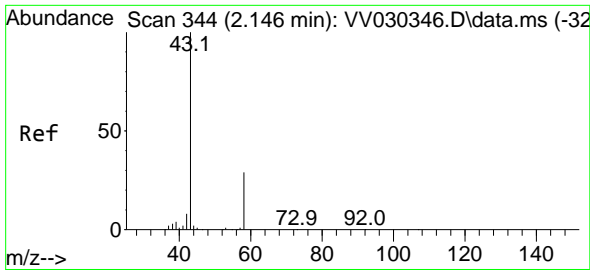
Tgt Ion: 85 Resp: 2121
 Ion Ratio Lower Upper
 85 100
 87 40.7 25.6 38.4#



#3
 Chloromethane
 Concen: 0.222 ug/L
 RT: 1.214 min Scan# 54
 Delta R.T. -0.003 min
 Lab File: VV030363.D
 Acq: 30 Mar 2023 16:44

Tgt Ion: 50 Resp: 4696
 Ion Ratio Lower Upper
 50 100
 52 32.4 22.3 41.5

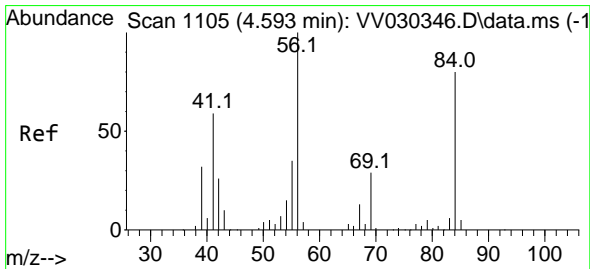
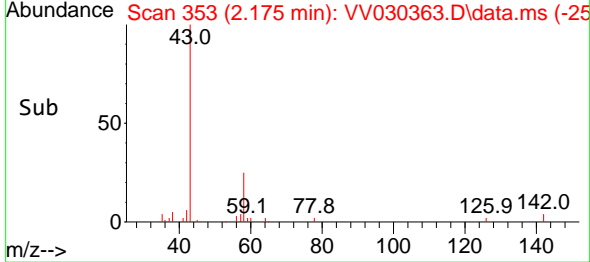
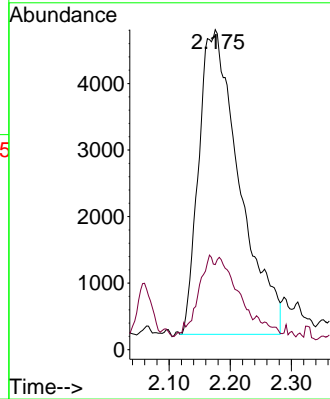
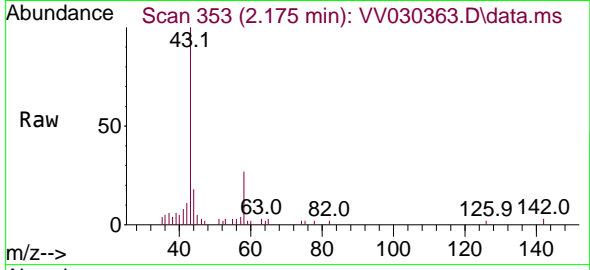




#13
 Acetone
 Concen: 9.816 ug/L
 RT: 2.175 min Scan# 31
 Delta R.T. 0.029 min
 Lab File: VV030363.D
 Acq: 30 Mar 2023 16:44

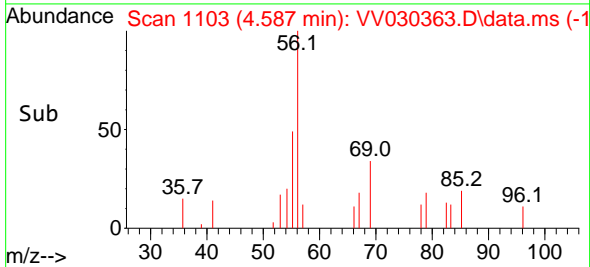
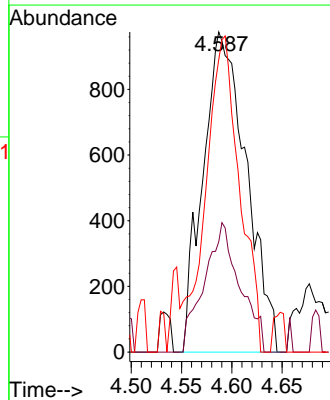
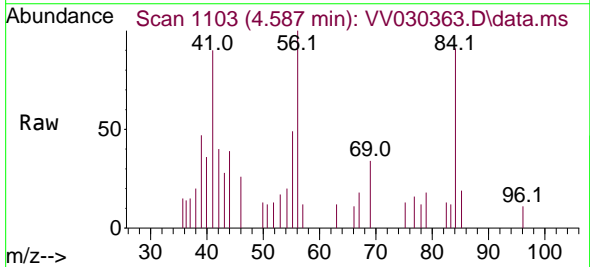
Instrument : MSVOA_V
 ClientSampleId : CB996

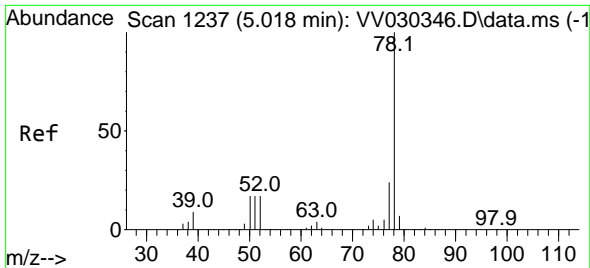
Tgt Ion: 43 Resp: 21202
 Ion Ratio Lower Upper
 43 100
 58 10.9 0.0 40.8



#30
 Cyclohexane
 Concen: 0.160 ug/L
 RT: 4.587 min Scan# 1103
 Delta R.T. -0.006 min
 Lab File: VV030363.D
 Acq: 30 Mar 2023 16:44

Tgt Ion: 56 Resp: 2922
 Ion Ratio Lower Upper
 56 100
 69 33.5 24.2 36.2
 84 76.3 66.6 100.0

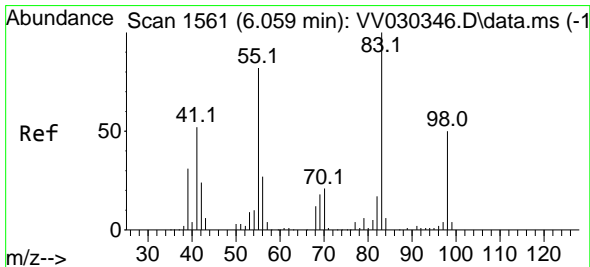
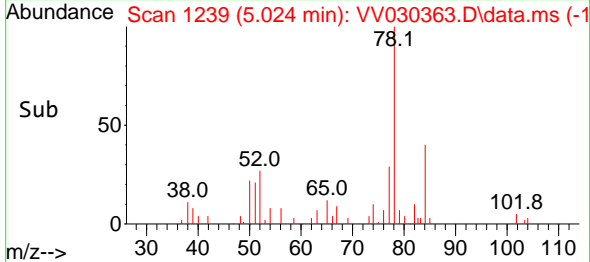
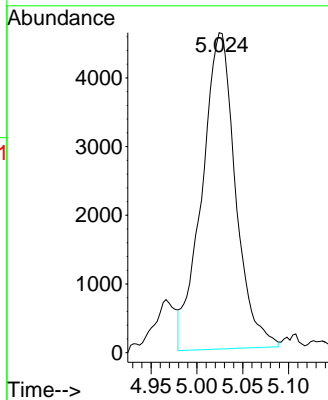
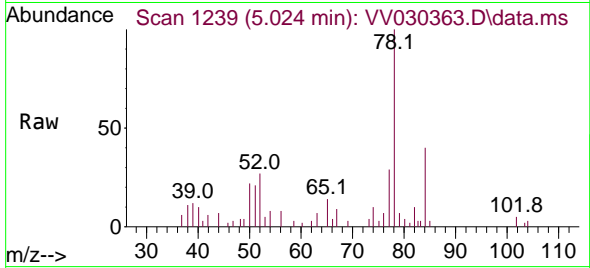




#33
Benzene
Concen: 0.264 ug/L
RT: 5.024 min Scan# 11
Delta R.T. 0.006 min
Lab File: VV030363.D
Acq: 30 Mar 2023 16:44

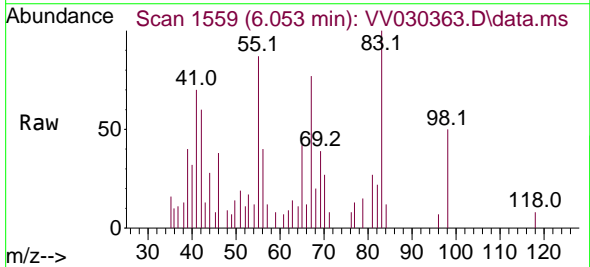
Tgt Ion: 78 Resp: 11714

Instrument : MSVOA_V
ClientSampleId : CB996

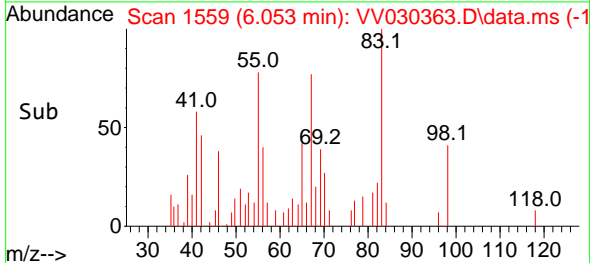
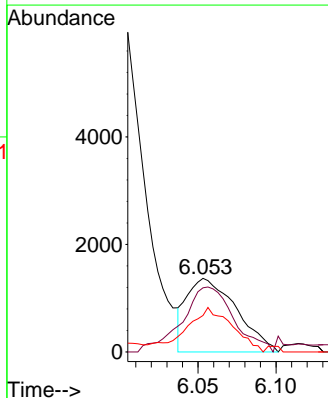


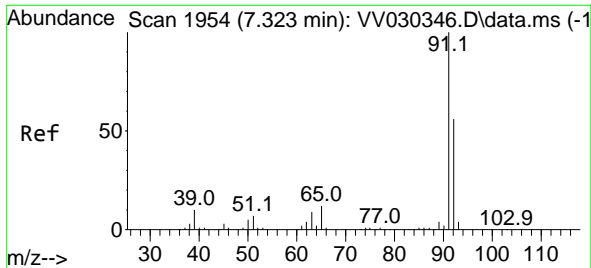
#35
Methylcyclohexane
Concen: 0.162 ug/L
RT: 6.053 min Scan# 1559
Delta R.T. -0.006 min
Lab File: VV030363.D
Acq: 30 Mar 2023 16:44

Tgt Ion: 83 Resp: 3035



| Ion | Ratio | Lower | Upper |
|-----|-------|-------|-------|
| 83 | 100 | | |
| 55 | 91.8 | 66.6 | 100.0 |
| 98 | 56.8 | 38.6 | 58.0 |

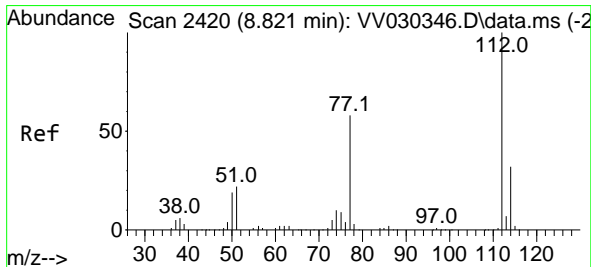
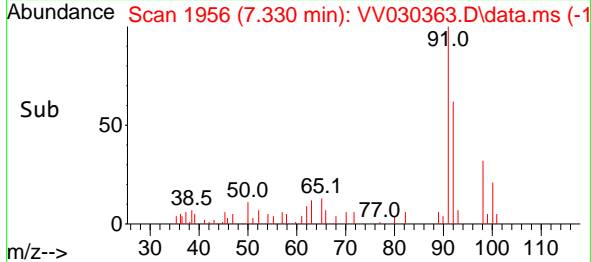
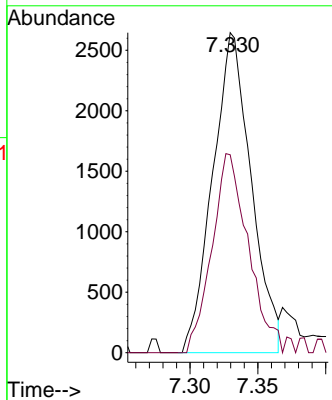
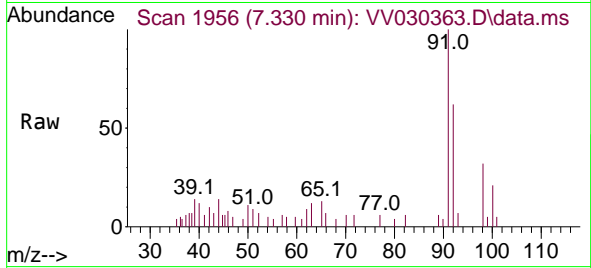




#42
 Toluene
 Concen: 0.111 ug/L
 RT: 7.330 min Scan# 1954
 Delta R.T. 0.006 min
 Lab File: VV030363.D
 Acq: 30 Mar 2023 16:44

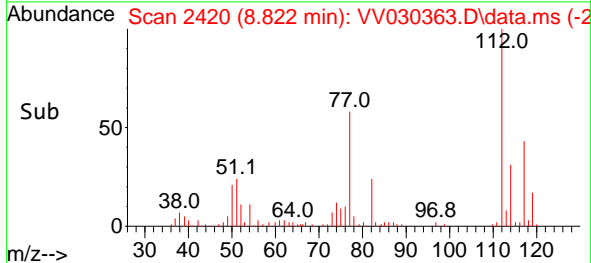
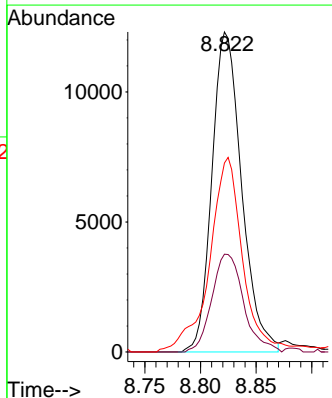
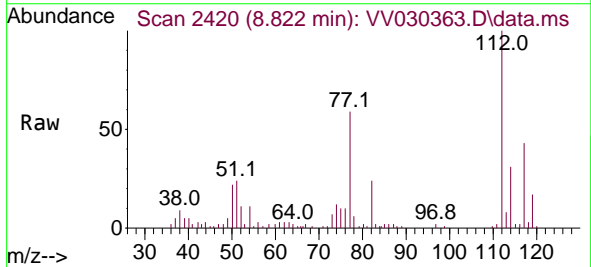
Instrument : MSVOA_V
 ClientSampleId : CB996

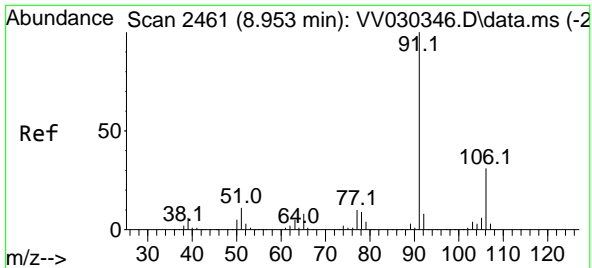
Tgt Ion: 91 Resp: 5236
 Ion Ratio Lower Upper
 91 100
 92 61.9 40.4 75.0



#51
 Chlorobenzene
 Concen: 0.756 ug/L
 RT: 8.822 min Scan# 2420
 Delta R.T. 0.000 min
 Lab File: VV030363.D
 Acq: 30 Mar 2023 16:44

Tgt Ion: 112 Resp: 22853
 Ion Ratio Lower Upper
 112 100
 114 30.6 22.4 41.6
 77 59.1 45.9 68.9

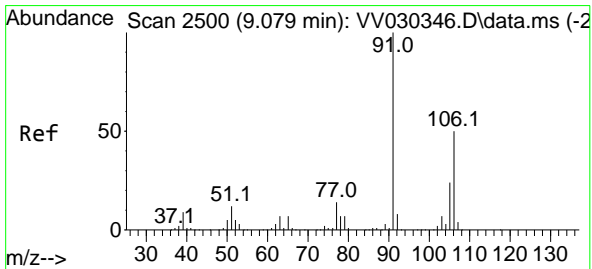
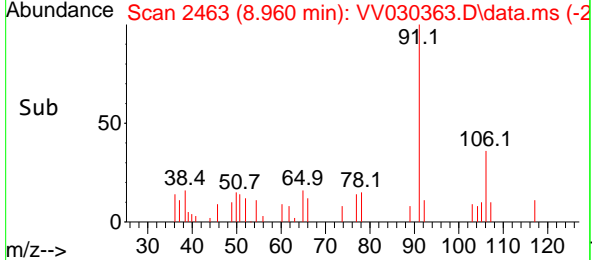
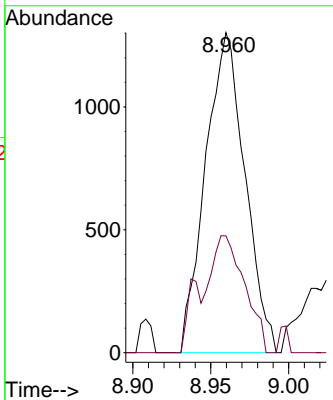
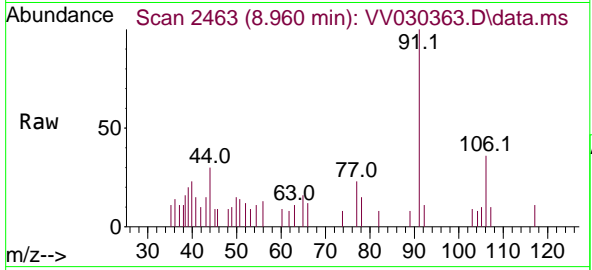




#52
 Ethylbenzene
 Concen: 0.044 ug/L
 RT: 8.960 min Scan# 2461
 Delta R.T. 0.006 min
 Lab File: VV030363.D
 Acq: 30 Mar 2023 16:44

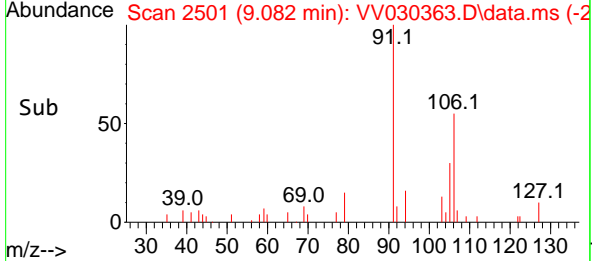
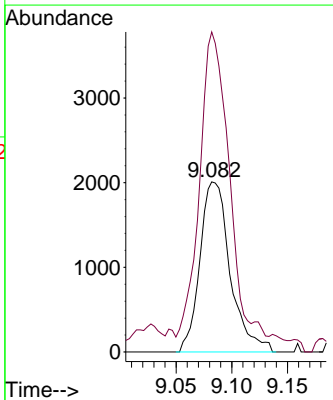
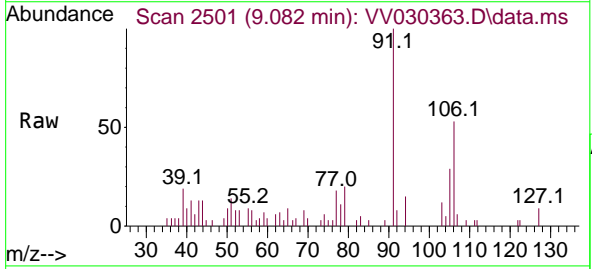
Instrument : MSVOA_V
 ClientSampleId : CB996

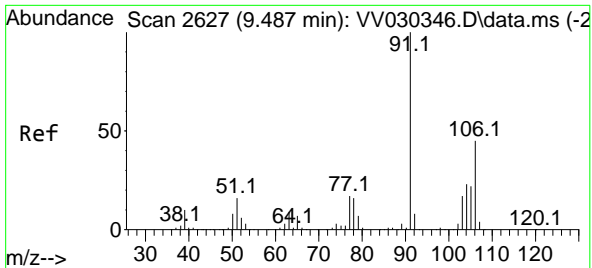
Tgt Ion: 91 Resp: 2295
 Ion Ratio Lower Upper
 91 100
 106 36.5 22.2 41.2



#53
 m,p-Xylene
 Concen: 0.192 ug/L
 RT: 9.082 min Scan# 2501
 Delta R.T. 0.003 min
 Lab File: VV030363.D
 Acq: 30 Mar 2023 16:44

Tgt Ion: 106 Resp: 3804
 Ion Ratio Lower Upper
 106 100
 91 188.1 142.4 264.4

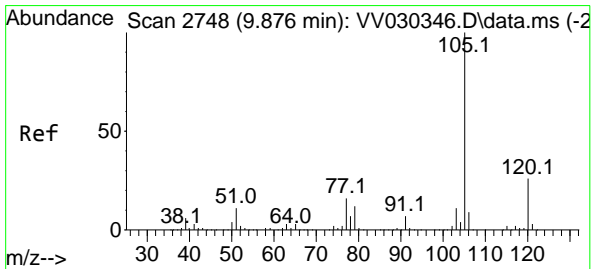
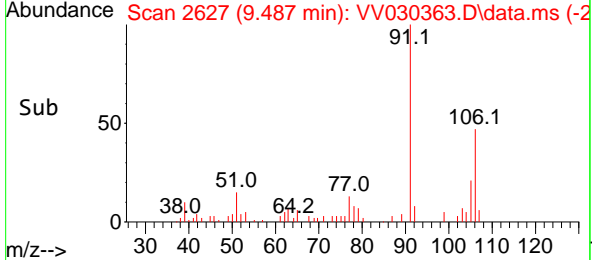
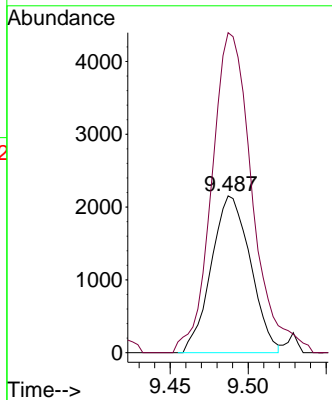
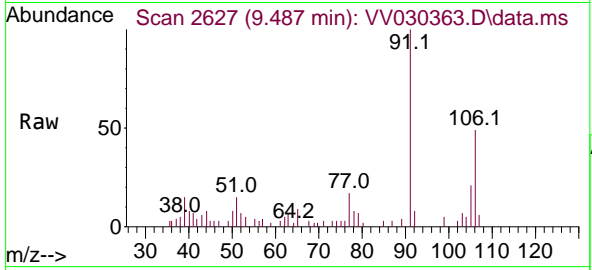




#54
 o-Xylene
 Concen: 0.199 ug/L
 RT: 9.487 min Scan# 2627
 Delta R.T. 0.000 min
 Lab File: VV030363.D
 Acq: 30 Mar 2023 16:44

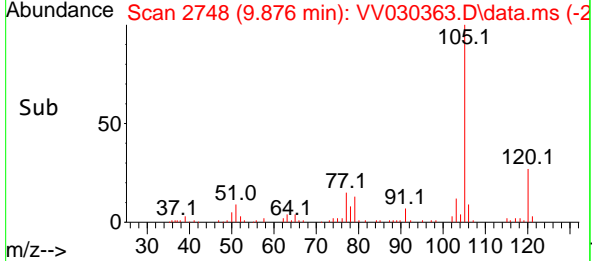
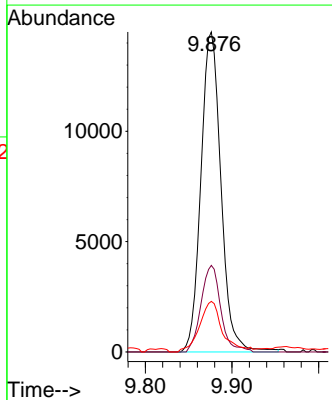
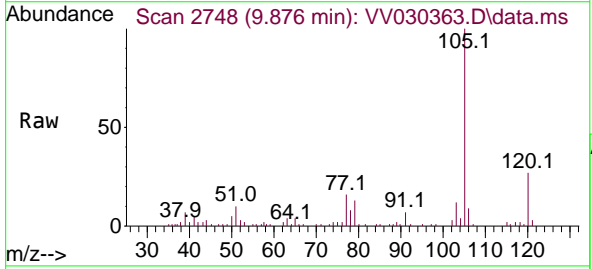
Instrument : MSVOA_V
 ClientSampleId : CB996

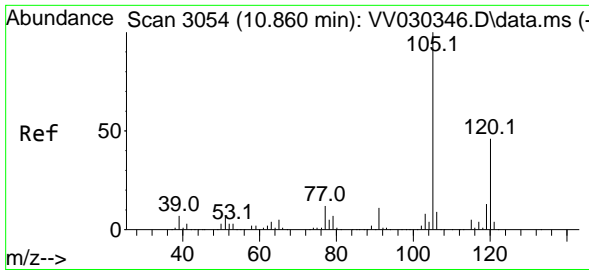
Tgt Ion:106 Resp: 3764
 Ion Ratio Lower Upper
 106 100
 91 204.1 149.8 278.2



#60
 Isopropylbenzene
 Concen: 0.469 ug/L
 RT: 9.876 min Scan# 2748
 Delta R.T. 0.000 min
 Lab File: VV030363.D
 Acq: 30 Mar 2023 16:44

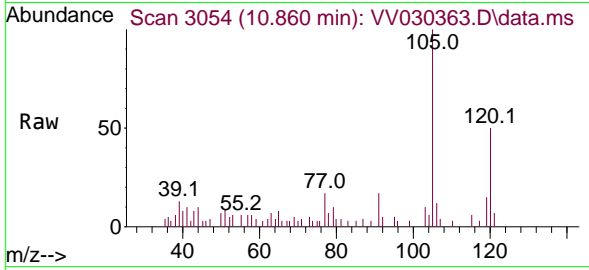
Tgt Ion:105 Resp: 23324
 Ion Ratio Lower Upper
 105 100
 120 26.5 21.1 31.7
 77 18.1 12.9 19.3



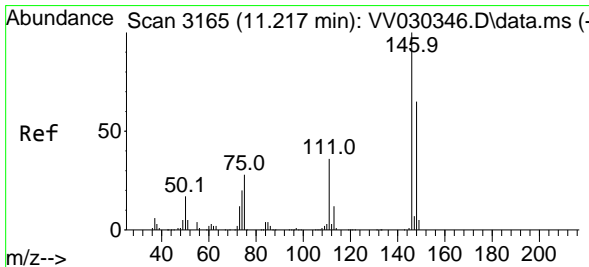
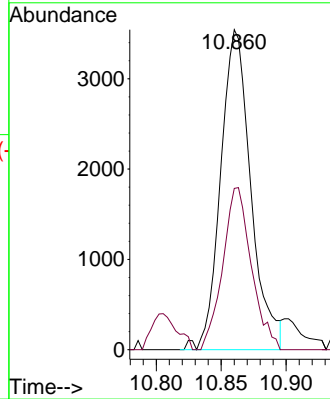
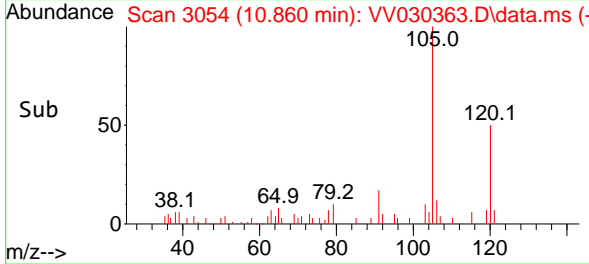


#63
 1,2,4-Trimethylbenzene
 Concen: 0.139 ug/L
 RT: 10.860 min Scan# 3054
 Delta R.T. 0.000 min
 Lab File: VV030363.D
 Acq: 30 Mar 2023 16:44

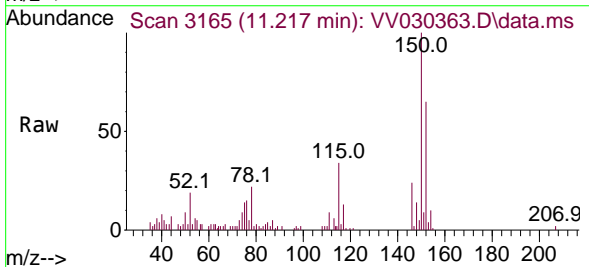
Instrument : MSVOA_V
 ClientSampleId : CB996



Tgt Ion:105 Resp: 5731
 Ion Ratio Lower Upper
 105 100
 120 48.1 36.8 55.2



#65
 1,4-Dichlorobenzene
 Concen: 0.120 ug/L
 RT: 11.217 min Scan# 3165
 Delta R.T. 0.000 min
 Lab File: VV030363.D
 Acq: 30 Mar 2023 16:44



Tgt Ion:146 Resp: 3003
 Ion Ratio Lower Upper
 146 100
 111 38.0 26.0 48.4
 148 60.8 45.2 84.0

