

Data File : VV010062.D  
 Acq On : 02 Apr 2019 15:18  
 Operator : SY/MD  
 Sample : VIBLK61  
 Misc : 5.00G/10mL/MSVOA\_V/SOIL  
 ALS Vial : 1 Sample Multiplier: 1

Instrument :  
 MSVOA\_V  
 ClientSampleId :  
 BFB82

Quant Time: Apr 03 06:02:13 2019  
 Quant Method : Z:\VOASRV\HPCHEM1\MSVOA\_V\METHOD\SOM2VLM040219S.M  
 Quant Title : VOC Analysis  
 QLast Update : Tue Apr 02 17:59:24 2019  
 Response via : Initial Calibration

Internal Standards	R.T.	QIon	Response	Conc	Units	Dev(Min)
1) 1,4-Difluorobenzene	5.66	114	305135	25.00	ug/L	0.00
28) Chlorobenzene-d5	8.89	117	286918	25.00	ug/L	0.00
60) 1,4-Dichlorobenzene-d4	11.30	152	135640	25.00	ug/L	0.00

System Monitoring Compounds

4) Vinyl Chloride-d3	1.32	65	91725	22.45	ug/L	0.00
Spiked Amount	25.000	Range	30 - 150	Recovery	=	89.80%
7) Chloroethane-d5	1.58	69	125685	24.77	ug/L	0.00
Spiked Amount	25.000	Range	30 - 150	Recovery	=	99.08%
10) 1,1-Dichloroethene-d2	2.13	63	171528	16.65	ug/L	0.00
Spiked Amount	25.000	Range	45 - 110	Recovery	=	66.60%
20) 2-Butanone-d5	3.95	46	43029	37.02	ug/L	0.00
Spiked Amount	50.000	Range	20 - 135	Recovery	=	74.04%
24) Chloroform-d	4.40	84	160155	20.83	ug/L	0.00
Spiked Amount	25.000	Range	40 - 150	Recovery	=	83.32%
26) 1,2-Dichloroethane-d4	5.08	65	92654	21.54	ug/L	0.00
Spiked Amount	25.000	Range	70 - 130	Recovery	=	86.16%
29) Benzene-d6	5.10	84	335125	22.52	ug/L	0.00
Spiked Amount	25.000	Range	20 - 135	Recovery	=	90.08%
33) 1,2-Dichloropropane-d6	6.12	67	96771	22.04	ug/L	0.00
Spiked Amount	25.000	Range	70 - 120	Recovery	=	88.16%
37) Toluene-d8	7.36	98	327501	22.85	ug/L	0.00
Spiked Amount	25.000	Range	30 - 130	Recovery	=	91.40%
38) trans-1,3-Dichloropropene-	7.66	79	37690	20.08	ug/L	0.00
Spiked Amount	25.000	Range	30 - 135	Recovery	=	80.32%
39) 2-Hexanone-d5	8.14	63	31447	35.71	ug/L	0.00
Spiked Amount	50.000	Range	20 - 135	Recovery	=	71.42%
48) 1,1,2,2-Tetrachloroethane-	10.26	84	84939	19.61	ug/L	0.00
Spiked Amount	25.000	Range	45 - 120	Recovery	=	78.44%
61) 1,2-Dichlorobenzene-d4	11.67	152	120892	22.88	ug/L	0.00
Spiked Amount	25.000	Range	75 - 120	Recovery	=	91.52%

Target Compounds

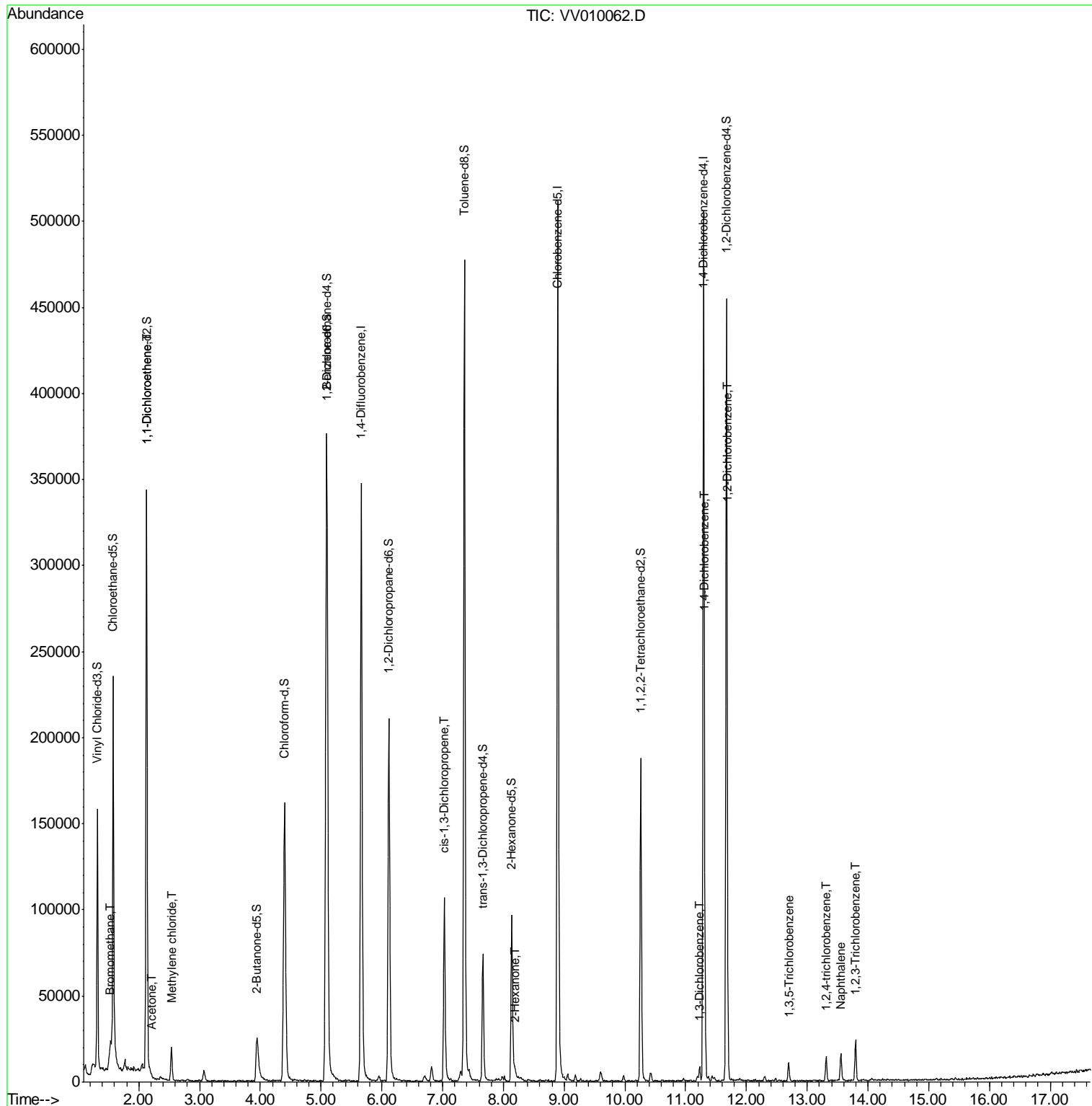
					Qvalue
6) Bromomethane	1.54	94	1951	0.403 ug/L	94
12) 1,1-Dichloroethene	2.14	96	2148	0.515 ug/L #	1
13) Acetone	2.21	43	1461	1.271 ug/L	93
16) Methylene chloride	2.54	84	8706	1.624 ug/L	99
42) cis-1,3-Dichloropropene	7.03	75	3318	0.647 ug/L #	79
49) 2-Hexanone	8.19	43	3735	1.994 ug/L #	86
63) 1,3-Dichlorobenzene	11.23	146	3085	0.387 ug/L	91
64) 1,4-Dichlorobenzene	11.32	146	4361	0.526 ug/L	99
65) 1,2-Dichlorobenzene	11.69	146	3243	0.415 ug/L #	88
67) 1,3,5-Trichlorobenzene	12.69	180	3714	0.628 ug/L	89
68) 1,2,4-trichlorobenzene	13.31	180	4568	1.009 ug/L #	93
69) Naphthalene	13.55	128	12539	1.665 ug/L	97
70) 1,2,3-Trichlorobenzene	13.79	180	4843	1.146 ug/L	90

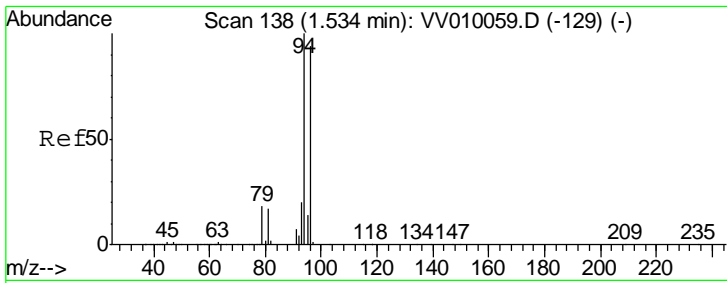
(#) = qualifier out of range (m) = manual integration (+) = signals summed

Data File : VV010062.D  
Acq On : 02 Apr 2019 15:18  
Operator : SY/MD  
Sample : VIBLK61  
Misc : 5.00G/10mL/MSVOA\_V/SOIL  
ALS Vial : 1 Sample Multiplier: 1

Instrument :  
MSVOA\_V  
ClientSampled :  
BFB82

Quant Time: Apr 03 06:02:13 2019  
Quant Method : Z:\VOASRV\HPCHEM1\MSVOA\_V\METHOD\SOM2VLM040219S.M  
Quant Title : VOC Analysis  
QLast Update : Tue Apr 02 17:59:24 2019  
Response via : Initial Calibration

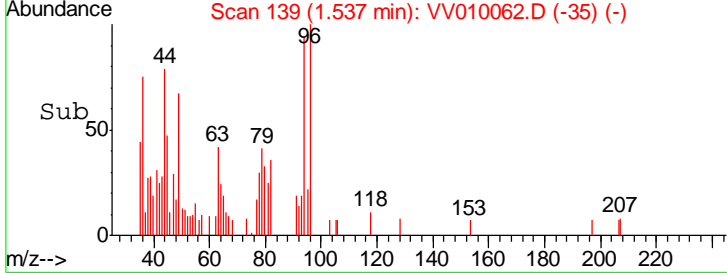
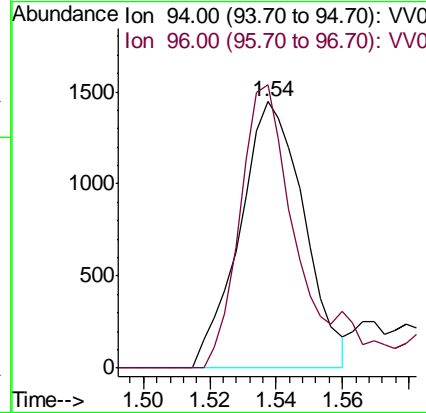
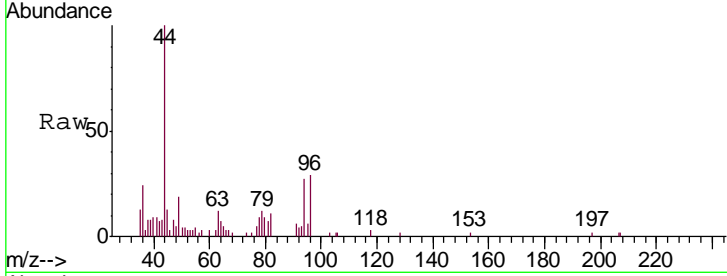




#6  
 Bromomethane  
 Concen: 0.403 ug/L  
 RT: 1.54 min Scan# 139  
 Delta R.T. 0.00 min  
 Lab File: VV010062.D  
 Acq: 02 Apr 2019 15:18

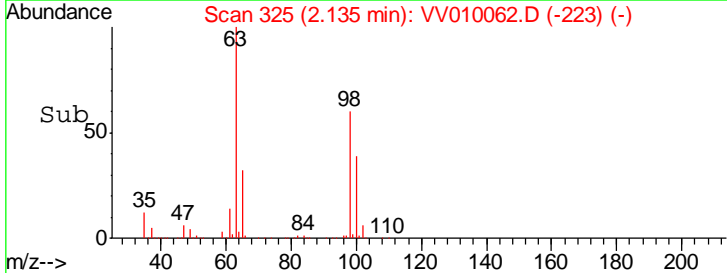
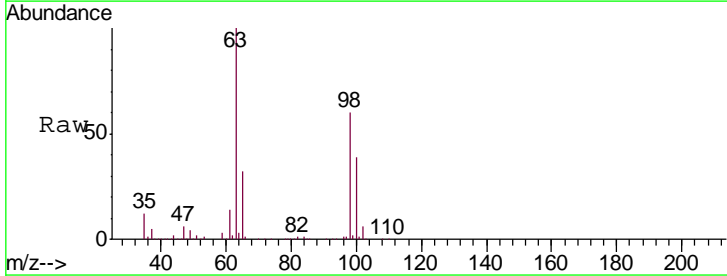
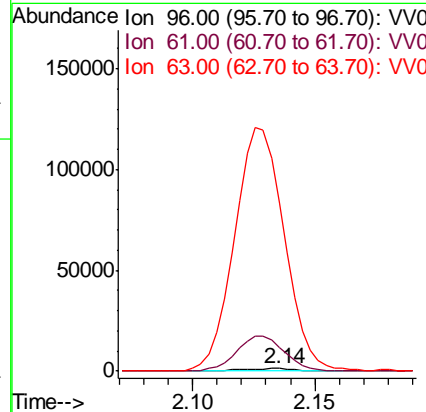
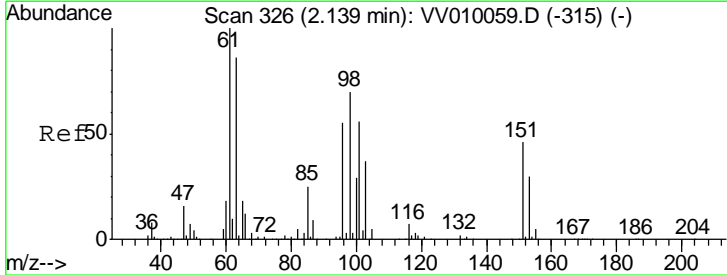
**Instrument :**  
 MSVOA\_V  
**ClientSampled :**  
 BFB82

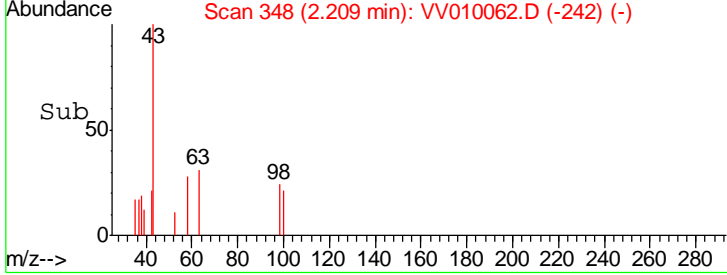
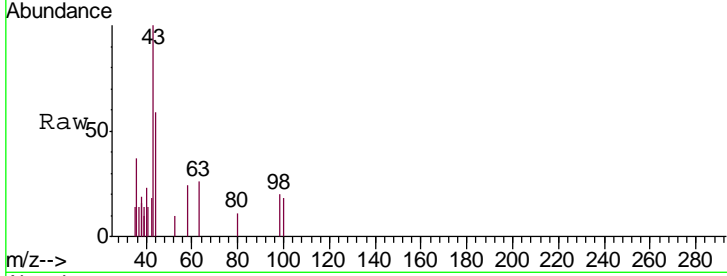
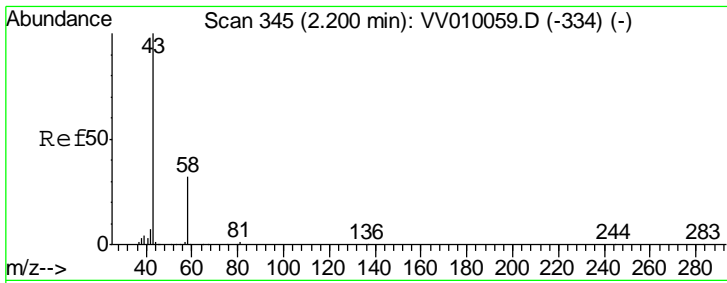
Tgt Ion	Resp	Lower	Upper
94	1951		
96	87.5	9.4	177.8



#12  
 1,1-Dichloroethene  
 Concen: 0.515 ug/L  
 RT: 2.14 min Scan# 325  
 Delta R.T. -0.00 min  
 Lab File: VV010062.D  
 Acq: 02 Apr 2019 15:18

Tgt Ion	Resp	Lower	Upper
96	2148		
61	957.2	127.8	237.4#
63	6716.3	112.6	209.2#

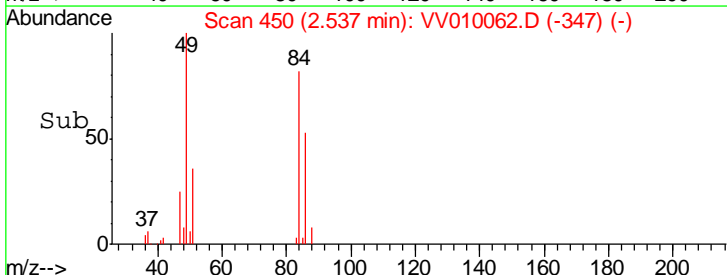
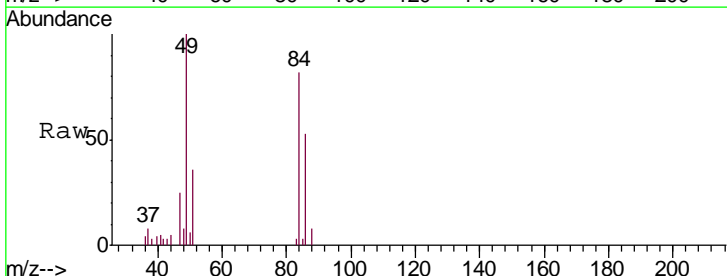
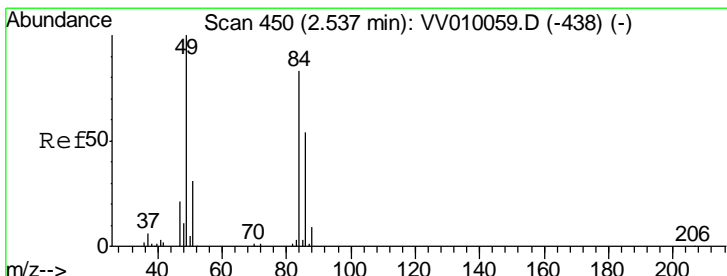
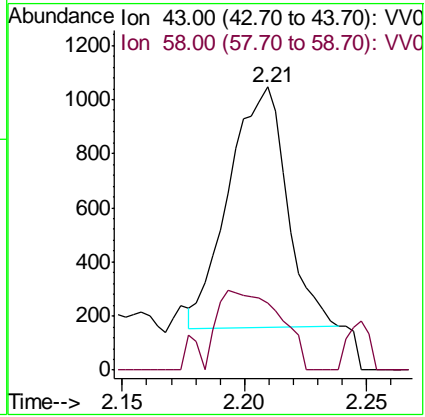




#13  
 Acetone  
 Concen: 1.271 ug/L  
 RT: 2.21 min Scan# 348  
 Delta R.T. 0.01 min  
 Lab File: VV010062.D  
 Acq: 02 Apr 2019 15:18

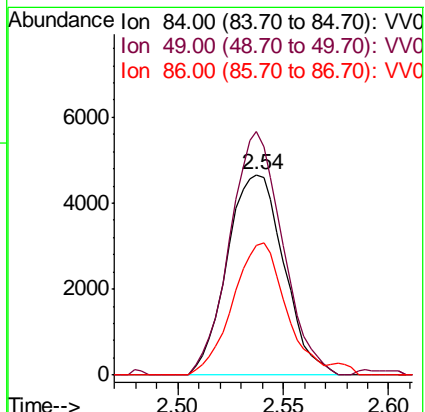
Tgt Ion	Resp	Lower	Upper
43	1461		
58	36.3	0.0	64.6

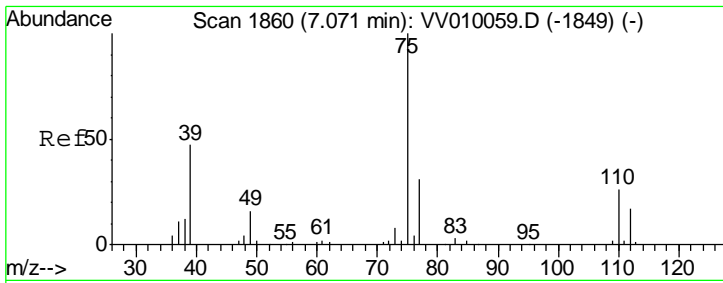
Instrument : MSVOA\_V  
 ClientSampled : BFB82



#16  
 Methylene chloride  
 Concen: 1.624 ug/L  
 RT: 2.54 min Scan# 450  
 Delta R.T. 0.00 min  
 Lab File: VV010062.D  
 Acq: 02 Apr 2019 15:18

Tgt Ion	Resp	Lower	Upper
84	8706		
49	121.4	84.3	156.5
86	64.4	45.4	84.2

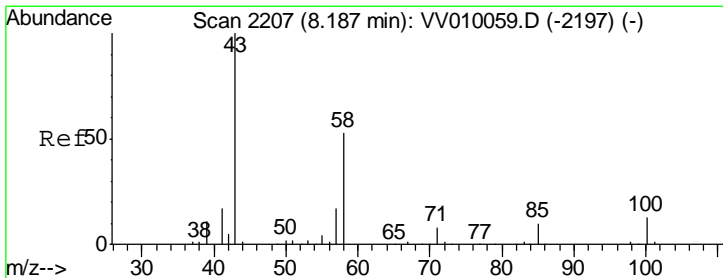
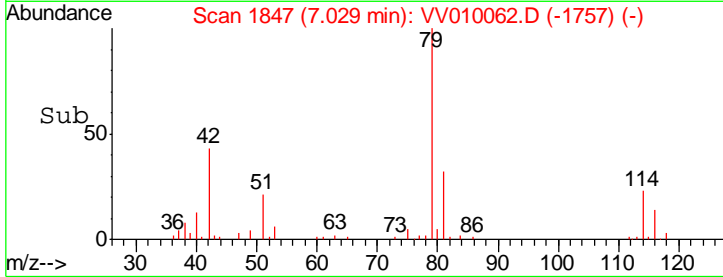
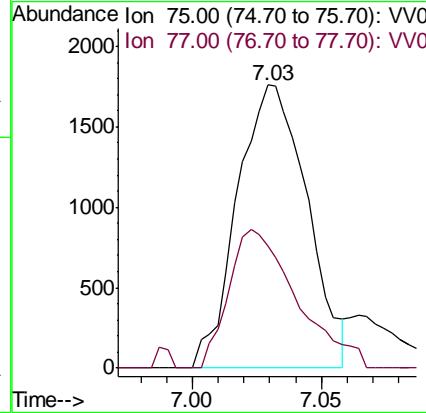
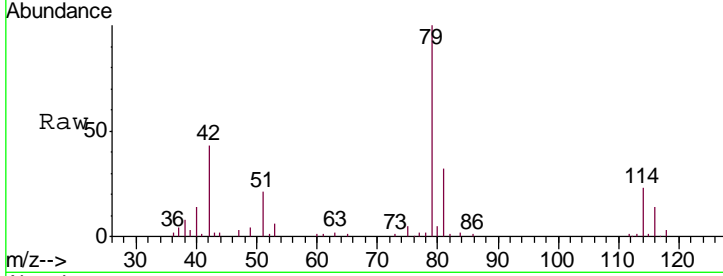




#42  
 cis-1,3-Dichloropropene  
 Concen: 0.647 ug/L  
 RT: 7.03 min Scan# 1847  
 Delta R.T. -0.04 min  
 Lab File: VV010062.D  
 Acq: 02 Apr 2019 15:18

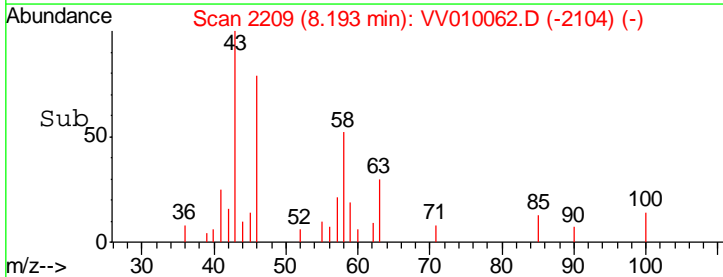
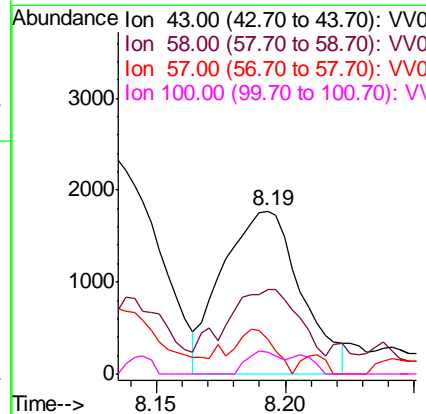
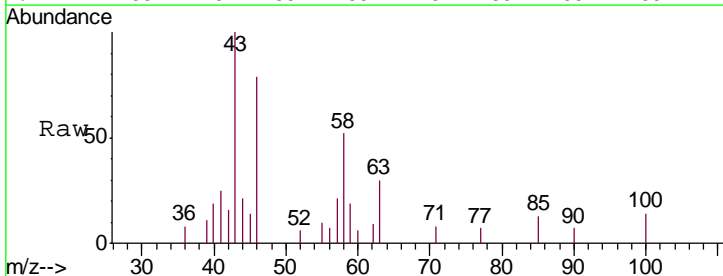
Instrument :  
 MSVOA\_V  
 ClientSampled :  
 BFB82

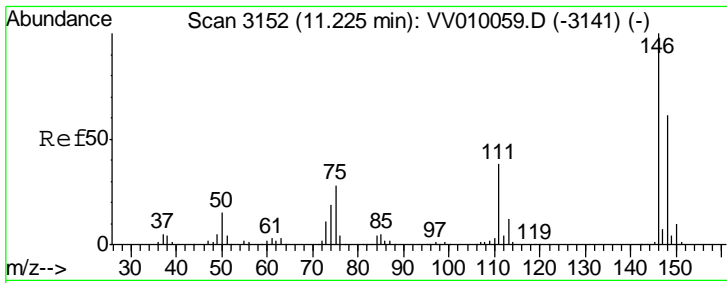
Tgt Ion: 75 Resp: 3318  
 Ion Ratio Lower Upper  
 75 100  
 77 43.4 22.1 41.1#



#49  
 2-Hexanone  
 Concen: 1.994 ug/L  
 RT: 8.19 min Scan# 2209  
 Delta R.T. 0.01 min  
 Lab File: VV010062.D  
 Acq: 02 Apr 2019 15:18

Tgt Ion: 43 Resp: 3735  
 Ion Ratio Lower Upper  
 43 100  
 58 44.9 44.3 66.5  
 57 12.5 13.8 20.8#  
 100 6.0 10.6 15.8#

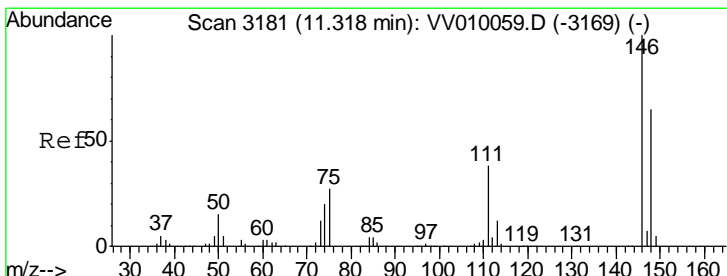
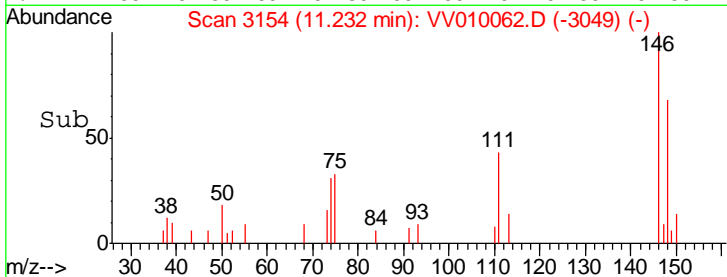
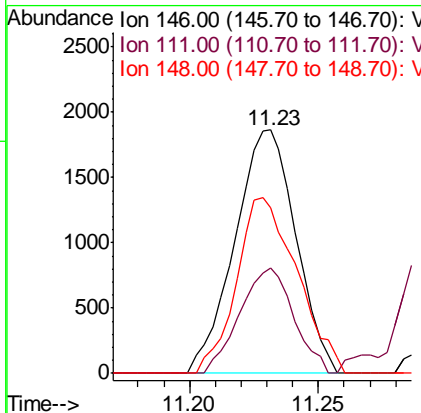
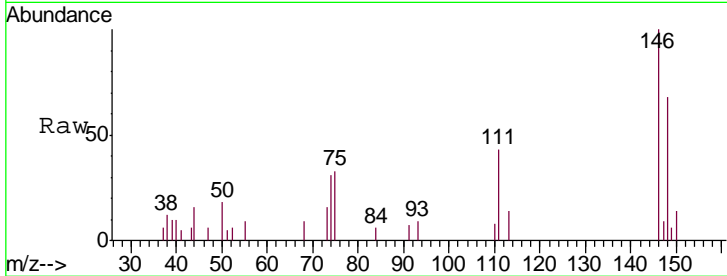




#63  
 1,3-Dichlorobenzene  
 Concen: 0.387 ug/L  
 RT: 11.23 min Scan# 3154  
 Delta R.T. 0.01 min  
 Lab File: VV010062.D  
 Acq: 02 Apr 2019 15:18

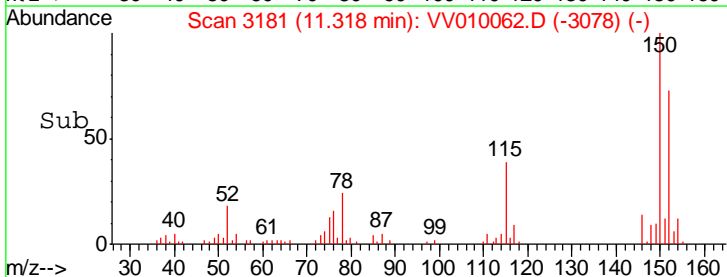
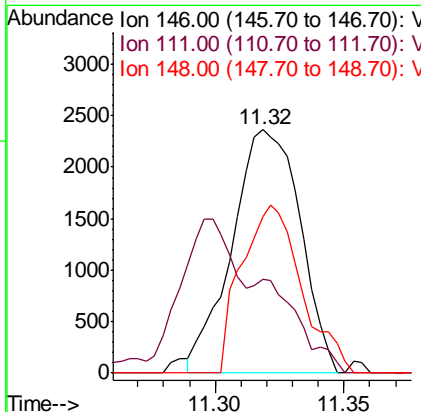
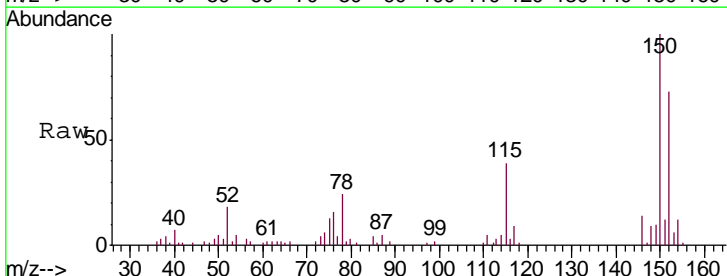
Instrument :  
 MSVOA\_V  
 ClientSampled :  
 BFB82

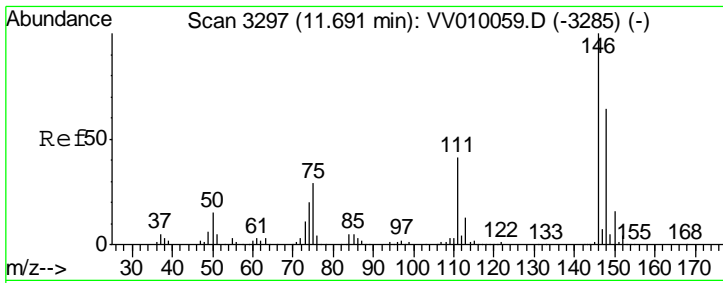
Tgt Ion	Resp	Lower	Upper
146	100		
111	43.2	26.8	49.8
148	67.7	42.7	79.3



#64  
 1,4-Dichlorobenzene  
 Concen: 0.526 ug/L  
 RT: 11.32 min Scan# 3181  
 Delta R.T. 0.00 min  
 Lab File: VV010062.D  
 Acq: 02 Apr 2019 15:18

Tgt Ion	Resp	Lower	Upper
146	100		
111	38.7	26.9	50.1
148	64.3	45.6	84.6

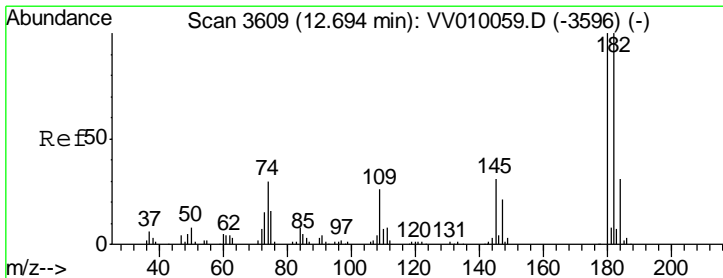
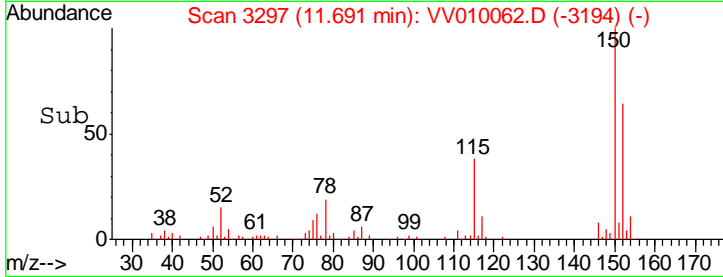
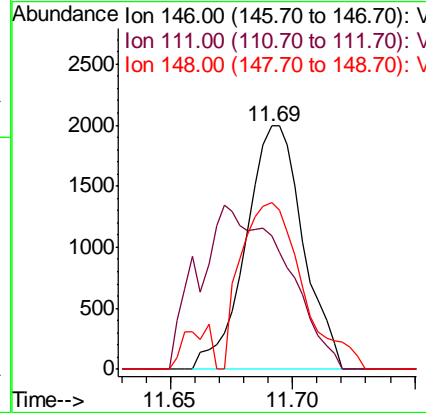
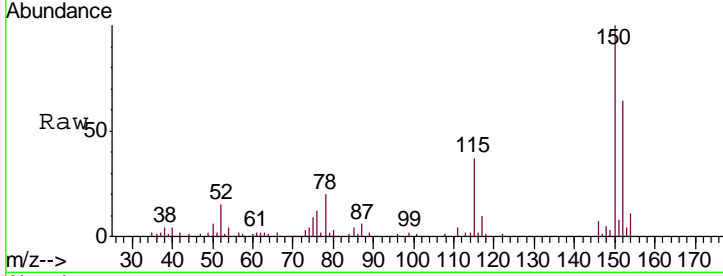




#65  
 1,2-Dichlorobenzene  
 Concen: 0.415 ug/L  
 RT: 11.69 min Scan# 3297  
 Delta R.T. 0.00 min  
 Lab File: VV010062.D  
 Acq: 02 Apr 2019 15:18

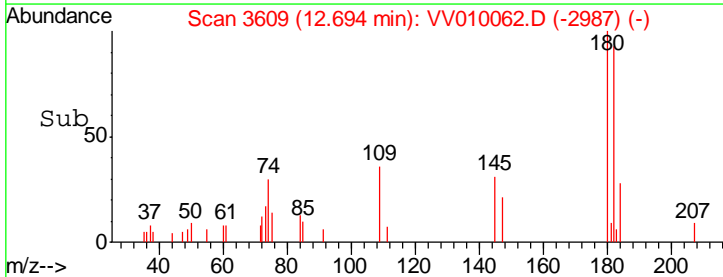
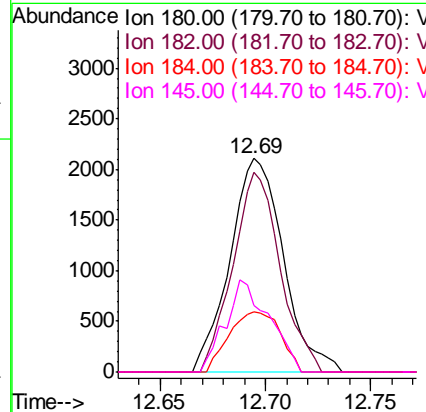
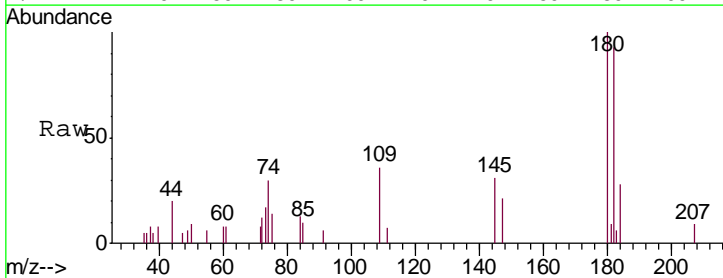
Instrument :  
 MSVOA\_V  
 ClientSampled :  
 BFB82

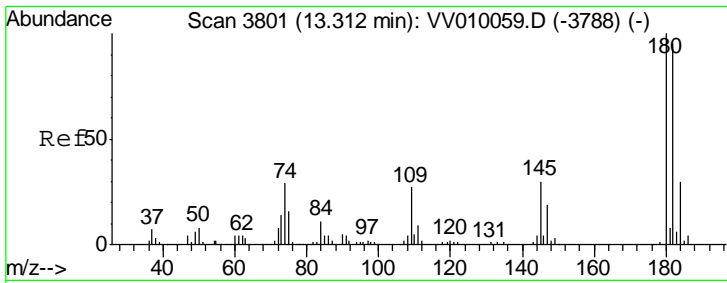
Tgt Ion	Resp	Lower	Upper
146	100		
111	54.8	33.2	49.8#
148	68.8	51.4	77.0



#67  
 1,3,5-Trichlorobenzene  
 Concen: 0.628 ug/L  
 RT: 12.69 min Scan# 3609  
 Delta R.T. 0.00 min  
 Lab File: VV010062.D  
 Acq: 02 Apr 2019 15:18

Tgt Ion	Resp	Lower	Upper
180	100		
182	82.4	77.2	115.8
184	27.0	23.8	35.6
145	35.2	24.6	36.8

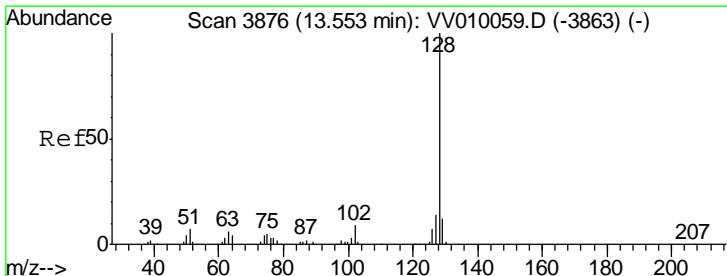
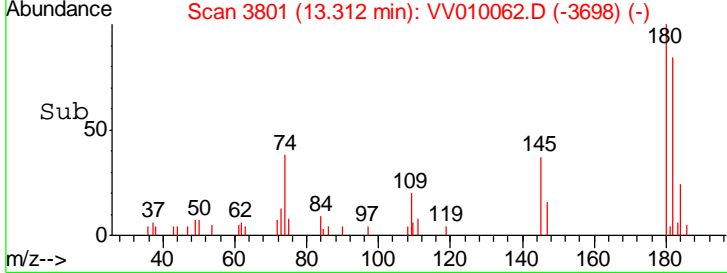
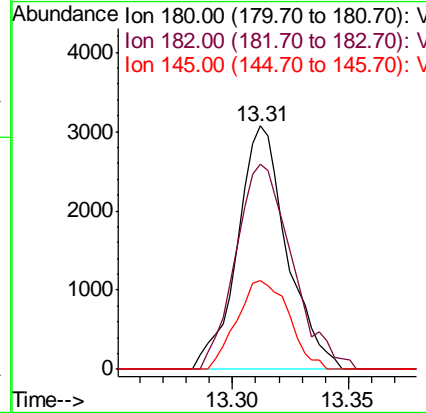
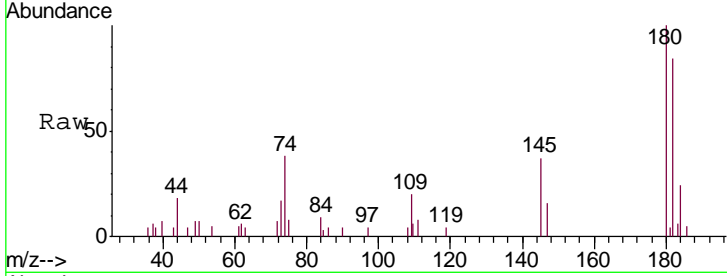




#68  
 1,2,4-trichlorobenzene  
 Concen: 1.009 ug/L  
 RT: 13.31 min Scan# 3801  
 Delta R.T. 0.00 min  
 Lab File: VV010062.D  
 Acq: 02 Apr 2019 15:18

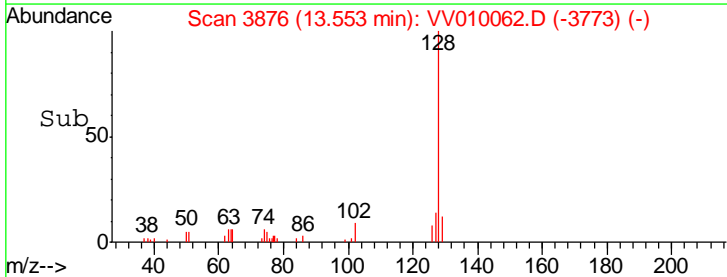
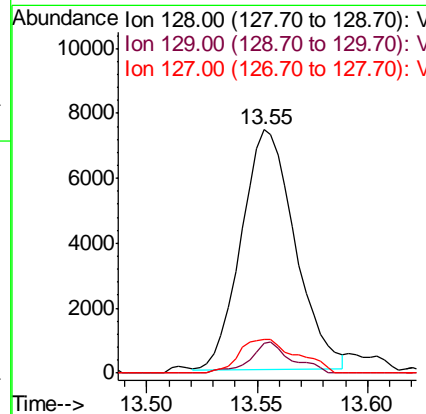
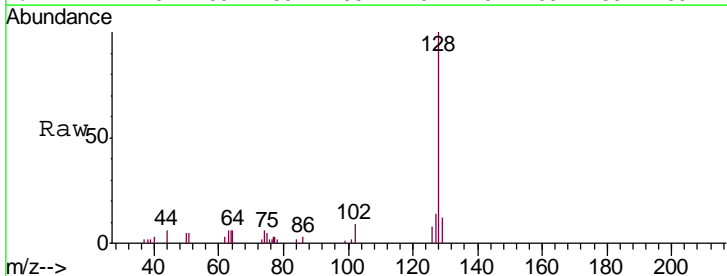
Instrument :  
 MSVOA\_V  
 ClientSampled :  
 BFB82

Tgt Ion	Resp	Lower	Upper
180	100		
182	90.4	75.7	113.5
145	38.2	24.6	37.0#

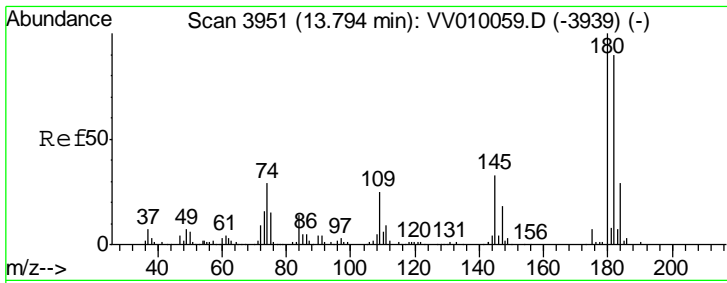


#69  
 Naphthalene  
 Concen: 1.665 ug/L  
 RT: 13.55 min Scan# 3876  
 Delta R.T. 0.00 min  
 Lab File: VV010062.D  
 Acq: 02 Apr 2019 15:18

Tgt Ion	Resp	Lower	Upper
128	100		
129	9.9	9.0	13.4
127	15.0	11.0	16.4







#70  
 1,2,3-Trichlorobenzene  
 Concen: 1.146 ug/L  
 RT: 13.79 min Scan# 3951  
 Delta R.T. 0.00 min  
 Lab File: VV010062.D  
 Acq: 02 Apr 2019 15:18

Instrument :  
 MSVOA\_V  
 ClientSampled :  
 BFB82

Tgt Ion	Resp	Lower	Upper
180	100		
182	103.2	74.1	111.1
145	36.4	25.8	38.8

