

Data Path : Z:\VOASRV\HPCHEM1\MSVOA V\DATA\VV040220\
 Data File : VV015375.D
 Acq On : 02 Apr 2020 15:36
 Operator : SY/MD
 Sample : L2005-08 500X
 Misc : 5.0mL/MSVOA V/WATER
 ALS Vial : 1 Sample Multiplier: 1

Instrument :
 MSVOA_V
 ClientSampled :
 C0DF0

Integration Parameters: LSCINT.P

Integrator: RTE
 Smoothing : OFF
 Sampling : 1
 Start Thrs: 0.2
 Stop Thrs : 0

Filtering: 5
 Min Area: 0 % of largest Peak
 Max Peaks: 100
 Peak Location: TOP

If leading or trailing edge < 100 prefer < Baseline drop else tangent >
 Peak separation: 5

Method : Z:\VOASRV\HPCHEM1\MSVOA_V\METHOD\SOMVLM040120WMA.M
 Title : VOC Analysis

Signal : TIC

peak #	R.T. min	first scan	max scan	last scan	PK TY	peak height	corr. area	corr. % max.	% of total
1	1.312	63	69	86	rVB	355488	369830	4.54%	1.296%
2	1.579	145	152	164	rVB	297979	349803	4.29%	1.226%
3	2.119	312	320	332	rVB	644621	923420	11.33%	3.237%
4	2.949	576	578	582	rBV4	1683	1357	0.02%	0.005%
5	3.132	633	635	638	rBV3	1332	943	0.01%	0.003%
6	3.177	646	649	651	rBV3	1583	1027	0.01%	0.004%
7	3.254	669	673	677	rVB7	2208	2274	0.03%	0.008%
8	3.283	677	682	685	rBV5	2668	2436	0.03%	0.009%
9	3.351	701	703	706	rBV3	1371	838	0.01%	0.003%
10	3.383	709	713	716	rBV4	1175	993	0.01%	0.003%
11	3.553	762	766	768	rBV4	1219	843	0.01%	0.003%
12	3.566	768	770	772	rVV3	1502	1010	0.01%	0.004%
13	3.576	772	773	777	rVB4	2231	1052	0.01%	0.004%
14	3.672	798	803	806	rBV6	1676	1568	0.02%	0.005%
15	3.704	811	813	816	rVV3	1569	929	0.01%	0.003%
16	3.746	822	826	829	rBV6	2273	1886	0.02%	0.007%
17	3.762	829	831	834	rBV3	1225	982	0.01%	0.003%
18	3.846	854	857	861	rVB5	1122	751	0.01%	0.003%
19	3.888	867	870	874	rBV5	1676	1453	0.02%	0.005%
20	3.939	874	886	924	rBV2	116614	513325	6.30%	1.800%
21	4.376	1009	1022	1049	rVB2	393877	983514	12.06%	3.448%
22	4.611	1092	1095	1097	rBV3	1961	1088	0.01%	0.004%
23	4.704	1120	1124	1130	rVB8	2723	2376	0.03%	0.008%
24	4.740	1130	1135	1136	rBV5	1395	1079	0.01%	0.004%
25	4.910	1186	1188	1190	rBV3	1120	744	0.01%	0.003%
26	5.000	1212	1216	1218	rBV4	1320	896	0.01%	0.003%
27	5.071	1221	1238	1247	rBV2	987851	2417423	29.65%	8.475%
28	5.640	1402	1415	1436	rBV	810108	1606193	19.70%	5.631%
29	6.032	1534	1537	1538	rBV3	1870	1110	0.01%	0.004%
30	6.093	1543	1556	1578	rVV	544380	1100507	13.50%	3.858%
31	6.335	1629	1631	1635	rBV5	1990	1350	0.02%	0.005%
32	6.528	1689	1691	1695	rVB4	1990	1078	0.01%	0.004%
33	6.553	1696	1699	1702	rBV4	1766	1489	0.02%	0.005%
34	6.589	1706	1710	1716	rBV8	1995	1868	0.02%	0.007%

Data Path : Z:\VOASRV\HPCHEM1\MSVOA V\DATA\VV040220\
 Data File : VV015375.D
 Acq On : 02 Apr 2020 15:36
 Operator : SY/MD
 Sample : L2005-08 500X
 Misc : 5.0mL/MSVOA V/WATER
 ALS Vial : 1 Sample Multiplier: 1

Instrument :
 MSVOA_V
 ClientSampleId :
 C0DF0

Integration Parameters: LSCINT.P

Integrator: RTE
 Smoothing : OFF
 Sampling : 1
 Start Thrs: 0.2
 Stop Thrs : 0

Filtering: 5
 Min Area: 0 % of largest Peak
 Max Peaks: 100
 Peak Location: TOP

If leading or trailing edge < 100 prefer < Baseline drop else tangent >
 Peak separation: 5

Method : Z:\VOASRV\HPCHEM1\MSVOA_V\METHOD\SOMVLM040120WMA.M
 Title : VOC Analysis

35	6.643	1723	1727	1730	rBV6	1550	1420	0.02%	0.005%
36	6.675	1735	1737	1740	rBV3	1409	920	0.01%	0.003%
37	6.769	1764	1766	1769	rBV3	1648	939	0.01%	0.003%
38	6.862	1792	1795	1797	rVV3	1654	1125	0.01%	0.004%
39	6.881	1799	1801	1806	rVB4	1830	1410	0.02%	0.005%
40	7.007	1830	1840	1865	rVB	327650	582887	7.15%	2.043%
41	7.338	1930	1943	1964	rBV	1238656	2152510	26.40%	7.546%
42	7.643	2023	2038	2054	rBV	236180	400126	4.91%	1.403%
43	7.891	2111	2115	2118	rBV5	2462	1829	0.02%	0.006%
44	7.910	2118	2121	2123	rBV3	1510	964	0.01%	0.003%
45	8.116	2175	2185	2219	rBV2	615117	1248674	15.31%	4.377%
46	8.357	2259	2260	2266	rBV5	1498	983	0.01%	0.003%
47	8.662	2351	2355	2357	rBV4	1864	1436	0.02%	0.005%
48	8.810	2400	2401	2405	rBV3	1144	750	0.01%	0.003%
49	8.904	2408	2430	2454	rBV2	3820761	8153344	100.00%	28.583%
50	9.569	2634	2637	2639	rBV3	1461	812	0.01%	0.003%
51	9.672	2665	2669	2672	rBV4	2118	1923	0.02%	0.007%
52	9.714	2679	2682	2683	rBV2	1414	763	0.01%	0.003%
53	9.756	2693	2695	2699	rBV5	1036	810	0.01%	0.003%
54	9.807	2709	2711	2714	rBV4	2282	1500	0.02%	0.005%
55	9.839	2716	2721	2726	rBV9	1344	1777	0.02%	0.006%
56	9.878	2731	2733	2734	rBV2	1734	731	0.01%	0.003%
57	9.942	2750	2753	2757	rVB4	1709	1076	0.01%	0.004%
58	10.109	2803	2805	2808	rBV3	1412	1005	0.01%	0.004%
59	10.151	2816	2818	2822	rBV5	1455	1128	0.01%	0.004%
60	10.238	2832	2845	2862	rBV	791567	1246681	15.29%	4.370%
61	10.325	2869	2872	2876	rVB4	2570	1435	0.02%	0.005%
62	10.415	2894	2900	2906	rBV10	2005	2906	0.04%	0.010%
63	10.576	2948	2950	2953	rVB4	1488	819	0.01%	0.003%
64	10.769	3006	3010	3013	rBV4	1712	1380	0.02%	0.005%
65	10.823	3023	3027	3030	rBV5	1719	1499	0.02%	0.005%
66	10.862	3037	3039	3042	rBV4	1555	906	0.01%	0.003%
67	10.987	3072	3078	3080	rBV7	2466	1998	0.02%	0.007%
68	11.100	3109	3113	3114	rBV4	1364	1077	0.01%	0.004%
69	11.206	3132	3146	3155	rBV2	82428	133340	1.64%	0.467%
70	11.273	3156	3167	3169	rBV	1449171	1831555	22.46%	6.421%
71	11.662	3271	3288	3309	rVV2	1851358	4318437	52.97%	15.139%

Data Path : Z:\VOASRV\HPCHEM1\MSVOA V\DATA\VV040220\
 Data File : VV015375.D
 Acq On : 02 Apr 2020 15:36
 Operator : SY/MD
 Sample : L2005-08 500X
 Misc : 5.0mL/MSVOA V/WATER
 ALS Vial : 1 Sample Multiplier: 1

Instrument :
 MSVOA_V
 ClientSampleId :
 C0DF0

Integration Parameters: LSCINT.P

Integrator: RTE
 Smoothing : OFF Filtering: 5
 Sampling : 1 Min Area: 0 % of largest Peak
 Start Thrs: 0.2 Max Peaks: 100
 Stop Thrs : 0 Peak Location: TOP

If leading or trailing edge < 100 prefer < Baseline drop else tangent >
 Peak separation: 5

Method : Z:\VOASRV\HPCHEM1\MSVOA_V\METHOD\SOMVLM040120WMA.M
 Title : VOC Analysis

72	11.891	3356	3359	3364	rBV7	2037	1748	0.02%	0.006%
73	12.013	3395	3397	3398	rBV2	1856	849	0.01%	0.003%
74	12.061	3409	3412	3417	rBV5	2162	2112	0.03%	0.007%
75	12.199	3452	3455	3459	rBV4	2530	1625	0.02%	0.006%
76	12.219	3459	3461	3463	rVV3	1916	1044	0.01%	0.004%
77	12.280	3478	3480	3484	rVB5	1789	1175	0.01%	0.004%
78	12.305	3484	3488	3490	rBV3	898	743	0.01%	0.003%
79	12.367	3505	3507	3511	rBV5	1294	835	0.01%	0.003%
80	12.485	3540	3544	3545	rBV3	1153	782	0.01%	0.003%
81	12.556	3564	3566	3571	rBV4	1252	866	0.01%	0.003%
82	12.653	3590	3596	3597	rBV6	1489	1364	0.02%	0.005%
83	12.669	3597	3601	3603	rBV4	2847	2155	0.03%	0.008%
84	12.849	3653	3657	3658	rVB3	1549	923	0.01%	0.003%
85	12.875	3662	3665	3668	rBV5	1727	1136	0.01%	0.004%
86	12.997	3699	3703	3708	rBV8	1836	2287	0.03%	0.008%
87	13.048	3714	3719	3723	rBV7	1977	2149	0.03%	0.008%
88	13.141	3743	3748	3750	rBV4	1115	1000	0.01%	0.004%
89	13.161	3751	3754	3757	rVV4	1708	1061	0.01%	0.004%
90	13.209	3766	3769	3770	rBV3	1350	847	0.01%	0.003%
91	13.286	3784	3793	3804	rBV3	52266	84632	1.04%	0.297%
92	13.386	3821	3824	3827	rVB4	1690	753	0.01%	0.003%
93	13.530	3864	3869	3880	rBV4	3489	6064	0.07%	0.021%
94	13.620	3894	3897	3898	rBV3	1611	972	0.01%	0.003%
95	13.649	3903	3906	3908	rBV4	1378	982	0.01%	0.003%
96	13.965	4001	4004	4007	rBV4	2111	1269	0.02%	0.004%
97	14.219	4080	4083	4088	rVB7	1879	1548	0.02%	0.005%
98	14.244	4088	4091	4095	rBV5	2194	1621	0.02%	0.006%
99	14.270	4097	4099	4102	rBV4	1724	1159	0.01%	0.004%
100	14.685	4226	4228	4234	rVB5	2490	1593	0.02%	0.006%

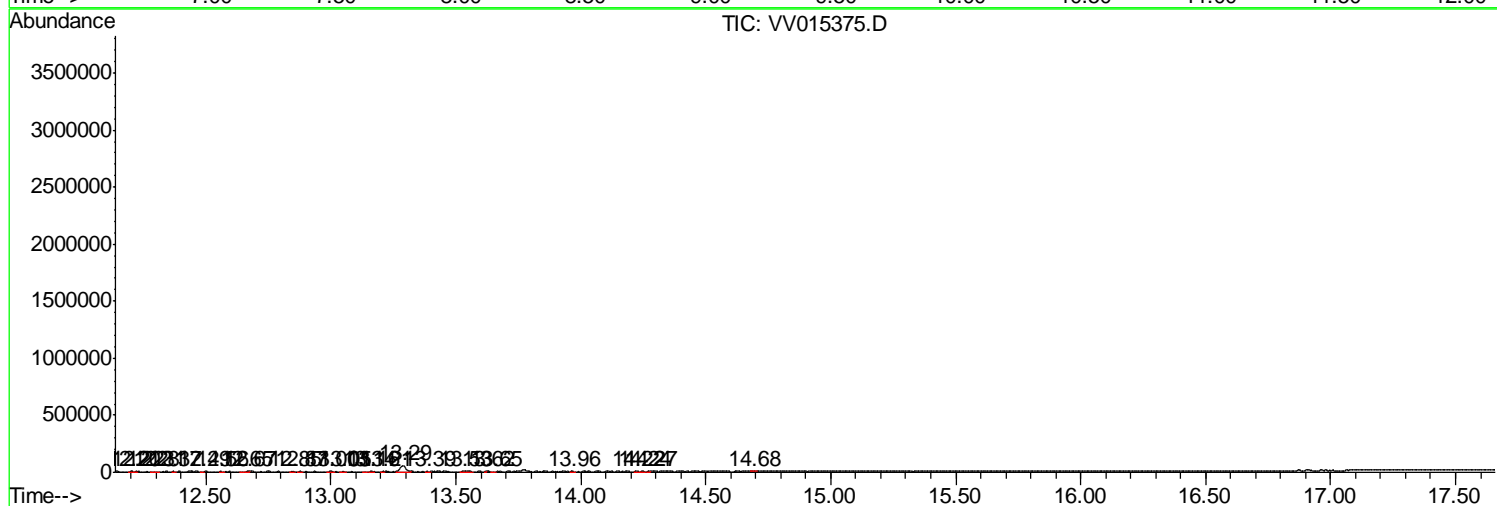
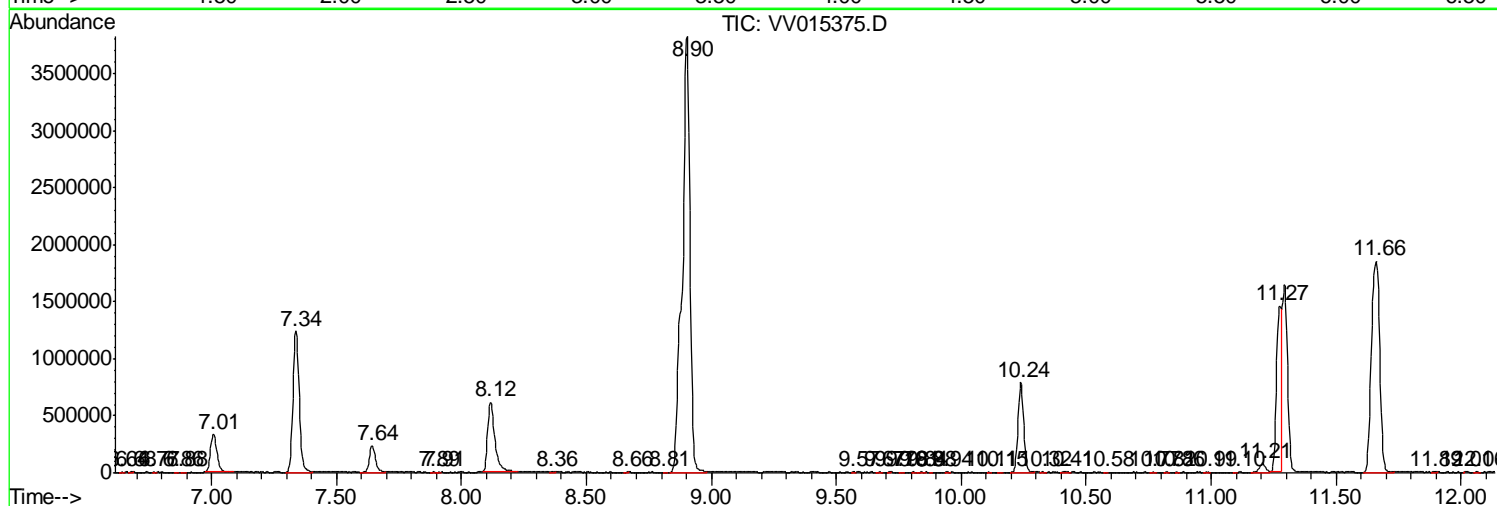
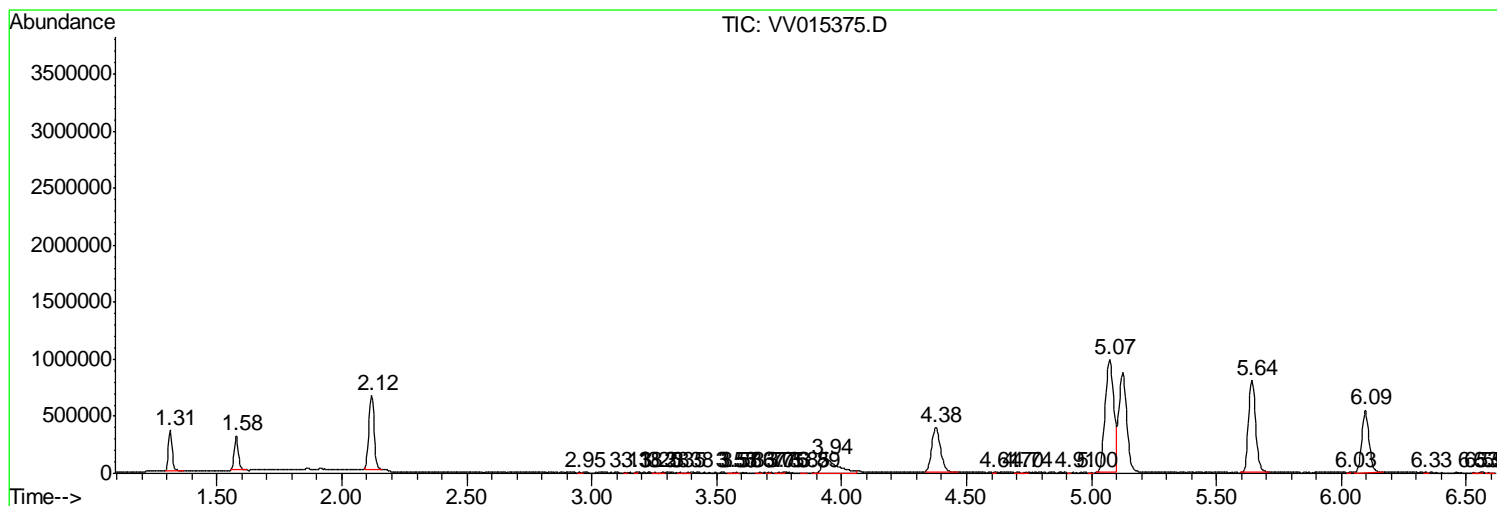
Sum of corrected areas: 28525604

Data Path : Z:\VOASRV\HPCHEM1\MSVOA V\DATA\VV040220\
 Data File : VV015375.D
 Acq On : 02 Apr 2020 15:36
 Operator : SY/MD
 Sample : L2005-08 500X
 Misc : 5.0mL/MSVOA V/WATER
 ALS Vial : 1 Sample Multiplier: 1

Instrument :
 MSVOA_V
 ClientSampleId :
 C0DF0

Quant Method : Z:\VOASRV\HPCHEM1\MSVOA_V\METHOD\SOMVLM040120WMA.M
 Quant Title : VOC Analysis

TIC Library : C:\DATABASE\NIST11.L
 TIC Integration Parameters: LSCINT.P



Data Path : Z:\VOASRV\HPCHEM1\MSVOA_V\DATA\VV040220\
Data File : VV015375.D
Acq On : 02 Apr 2020 15:36
Operator : SY/MD
Sample : L2005-08 500X
Misc : 5.0mL/MSVOA_V/WATER
ALS Vial : 1 Sample Multiplier: 1

Instrument :
MSVOA_V
ClientSampleId :
C0DF0

Quant Method : Z:\VOASRV\HPCHEM1\MSVOA_V\METHOD\SOMVLM040120WMA.M
Quant Title : VOC Analysis

TIC Library : C:\DATABASE\NIST11.L
TIC Integration Parameters: LSCINT.P

No Library Search Compounds Detected

Data Path : Z:\VOASRV\HPCHEM1\MSVOA_V\DATA\VV040220\
Data File : VV015375.D
Acq On : 02 Apr 2020 15:36
Operator : SY/MD
Sample : L2005-08 500X
Misc : 5.0mL/MSVOA_V/WATER
ALS Vial : 1 Sample Multiplier: 1

Instrument :
MSVOA_V
ClientSampleId :
C0DF0

Quant Method : Z:\VOASRV\HPCHEM1\MSVOA_V\METHOD\SOMVLM040120WMA.M
Quant Title : VOC Analysis

TIC Library : C:\DATABASE\NIST11.L
TIC Integration Parameters: LSCINT.P

TIC Top Hit name	RT	EstConc	Units	Response	--Internal Standard--			
					#	RT	Resp	Conc
