

Data Path : Z:\voasrv\HPCHEM1\MSVOA_V\Data\VW040324\
 Data File : VW034955.D
 Acq On : 03 Apr 2024 14:42
 Operator : SY/MD
 Sample : P1925-15 200X
 Misc : 25.0mL/MSVOA_V/WATER
 ALS Vial : 14 Sample Multiplier: 1

Instrument :
 MSVOA_V
 ClientSampleId :
 PMW-8S(20240328)

Quant Time: Apr 04 02:53:37 2024
 Quant Method : Z:\voasrv\HPCHEM1\MSVOA_V\Method\SFAMVTR040224WMA.M
 Quant Title : TRACE VOA SFAM1.0
 QLast Update : Thu Apr 04 02:49:59 2024
 Response via : Initial Calibration

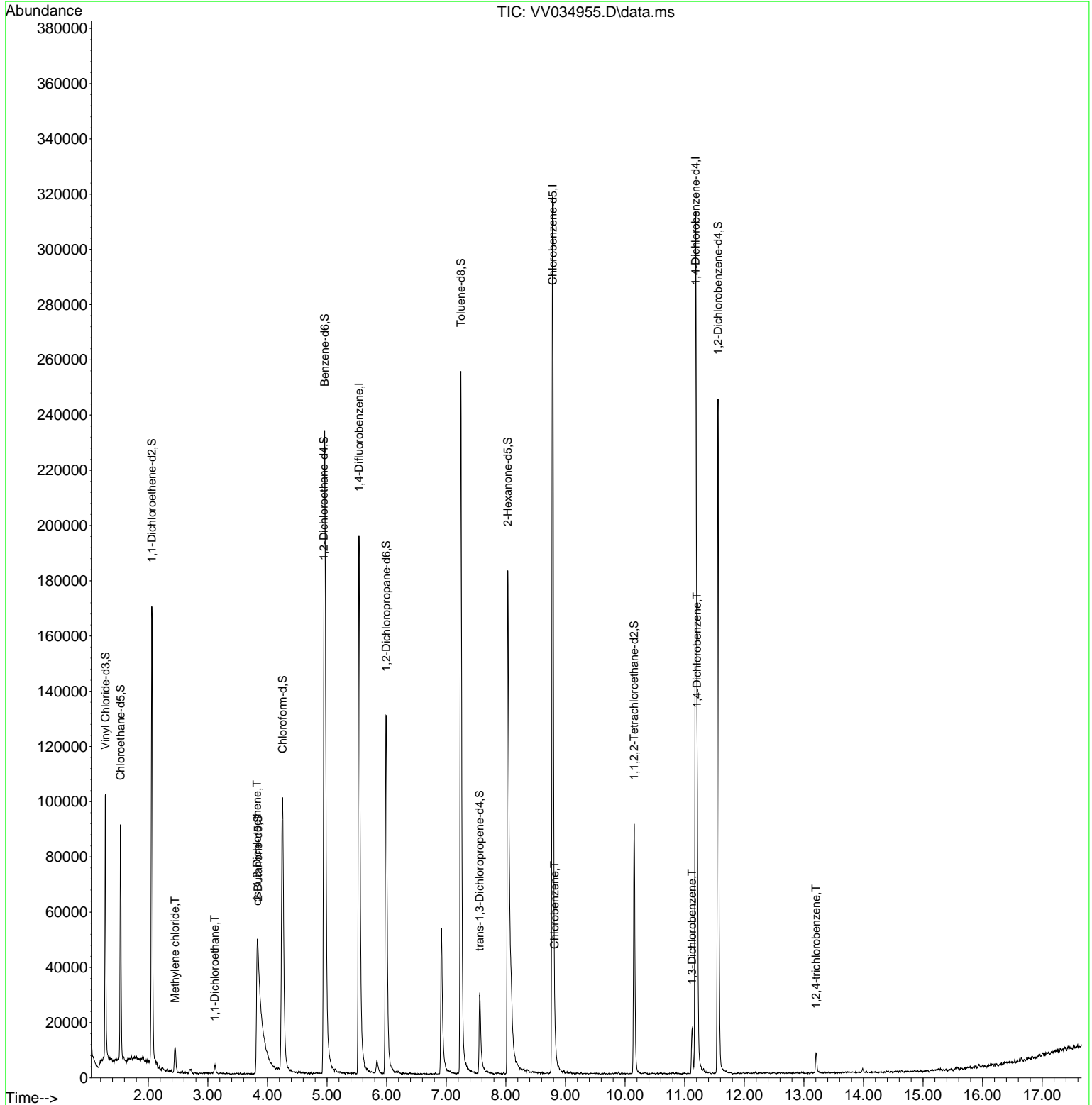
Compound	R.T.	QIon	Response	Conc	Units	Dev(Min)
Internal Standards						
1) 1,4-Difluorobenzene	5.535	114	177005	5.000	ug/L	0.00
28) Chlorobenzene-d5	8.786	117	179822	5.000	ug/L	0.00
58) 1,4-Dichlorobenzene-d4	11.185	152	80248	5.000	ug/L	0.00
System Monitoring Compounds						
4) Vinyl Chloride-d3	1.281	65	63033	4.321	ug/L	0.00
Spiked Amount	5.000	Range 40 - 130	Recovery =	86.400%		
7) Chloroethane-d5	1.535	69	54052	4.494	ug/L	0.00
Spiked Amount	5.000	Range 65 - 130	Recovery =	89.800%		
11) 1,1-Dichloroethene-d2	2.060	65	29222	4.411	ug/L	0.00
Spiked Amount	5.000	Range 60 - 125	Recovery =	88.200%		
20) 2-Butanone-d5	3.841	46	106728	46.760	ug/L	0.00
Spiked Amount	50.000	Range 40 - 130	Recovery =	93.520%		
24) Chloroform-d	4.252	84	108970	4.617	ug/L	0.00
Spiked Amount	5.000	Range 70 - 125	Recovery =	92.400%		
26) 1,2-Dichloroethane-d4	4.947	65	54232	5.088	ug/L	0.00
Spiked Amount	5.000	Range 70 - 130	Recovery =	101.800%		
32) Benzene-d6	4.960	84	219564	4.668	ug/L	0.00
Spiked Amount	5.000	Range 70 - 125	Recovery =	93.400%		
36) 1,2-Dichloropropane-d6	5.992	67	69737	5.051	ug/L	0.00
Spiked Amount	5.000	Range 60 - 140	Recovery =	101.000%		
41) Toluene-d8	7.246	98	182383	4.268	ug/L	0.00
Spiked Amount	5.000	Range 70 - 130	Recovery =	85.400%		
43) trans-1,3-Dichloroprop...	7.561	79	20952	4.272	ug/L	0.00
Spiked Amount	5.000	Range 55 - 130	Recovery =	85.400%		
46) 2-Hexanone-d5	8.034	63	69568	41.330	ug/L	0.00
Spiked Amount	50.000	Range 45 - 130	Recovery =	82.660%		
56) 1,1,2,2-Tetrachloroeth...	10.152	84	45251	4.698	ug/L	0.00
Spiked Amount	5.000	Range 65 - 120	Recovery =	94.000%		
66) 1,2-Dichlorobenzene-d4	11.561	152	63925	5.057	ug/L	0.00
Spiked Amount	5.000	Range 80 - 120	Recovery =	101.200%		
Target Compounds						
16) Methylene chloride	2.449	84	4011	0.272	ug/L	93
19) 1,1-Dichloroethane	3.117	63	3225	0.123	ug/L	96
22) cis-1,2-Dichloroethene	3.825	96	12433	0.891	ug/L	99
51) Chlorobenzene	8.818	112	6258	0.167	ug/L	93
64) 1,3-Dichlorobenzene	11.127	146	7414	0.290	ug/L	98
65) 1,4-Dichlorobenzene	11.210	146	38560	1.504	ug/L	96
70) 1,2,4-trichlorobenzene	13.204	180	2822	0.189	ug/L	100

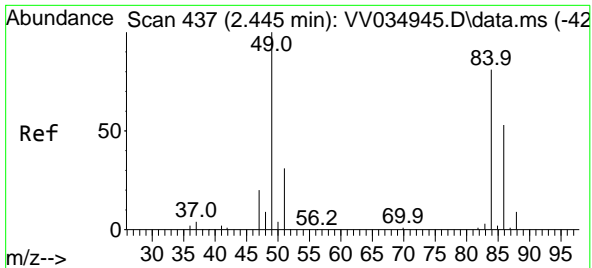
(#) = qualifier out of range (m) = manual integration (+) = signals summed

Data Path : Z:\voasrv\HPCHEM1\MSVOA_V\Data\VV040324\
 Data File : VV034955.D
 Acq On : 03 Apr 2024 14:42
 Operator : SY/MD
 Sample : P1925-15 200X
 Misc : 25.0mL/MSVOA_V/WATER
 ALS Vial : 14 Sample Multiplier: 1

Instrument :
 MSVOA_V
 ClientSampleId :
 PMW-8S(20240328)

Quant Time: Apr 04 02:53:37 2024
 Quant Method : Z:\voasrv\HPCHEM1\MSVOA_V\Method\SFAMVTR040224WMA.M
 Quant Title : TRACE VOA SFAM1.0
 QLast Update : Thu Apr 04 02:49:59 2024
 Response via : Initial Calibration



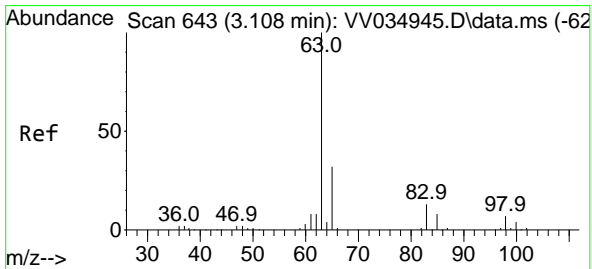
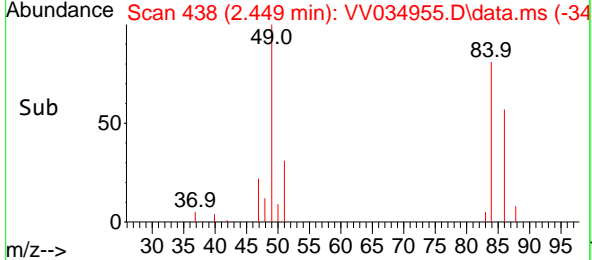
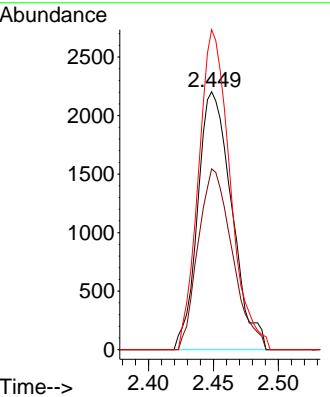
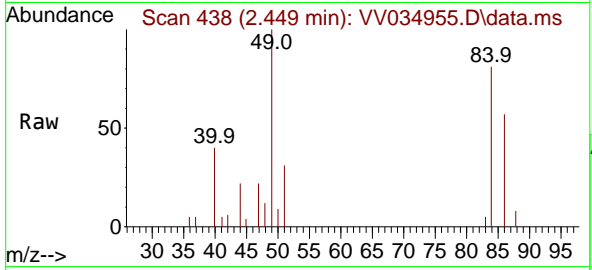


#16
 Methylene chloride
 Concen: 0.272 ug/L
 RT: 2.449 min Scan# 411
 Delta R.T. 0.003 min
 Lab File: VV034955.D
 Acq: 03 Apr 2024 14:42

Instrument : MSVOA_V
 ClientSampleId : PMW-8S(20240328)

Tgt Ion: 84 Resp: 4011

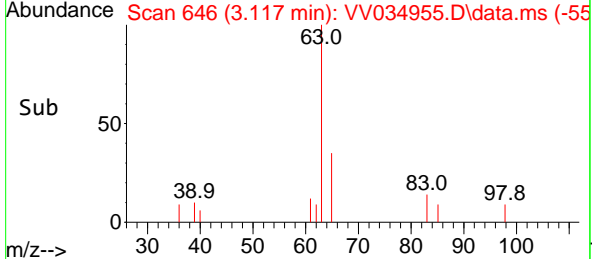
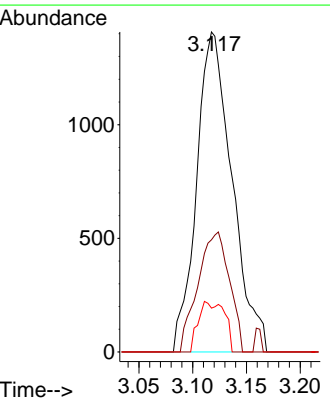
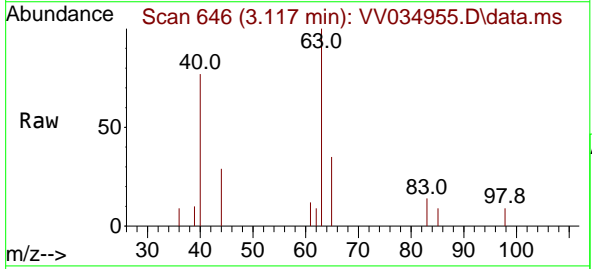
Ion	Ratio	Lower	Upper
84	100		
86	70.1	43.5	80.9
49	124.1	82.5	153.3

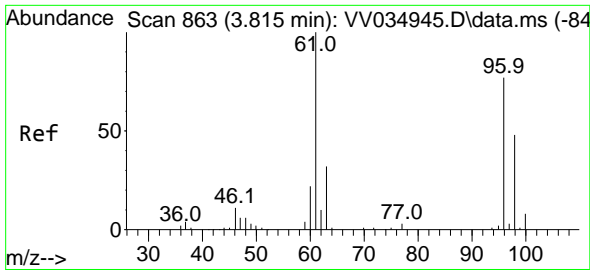


#19
 1,1-Dichloroethane
 Concen: 0.123 ug/L
 RT: 3.117 min Scan# 646
 Delta R.T. 0.010 min
 Lab File: VV034955.D
 Acq: 03 Apr 2024 14:42

Tgt Ion: 63 Resp: 3225

Ion	Ratio	Lower	Upper
63	100		
65	35.1	22.5	41.9
83	13.7	9.1	16.9



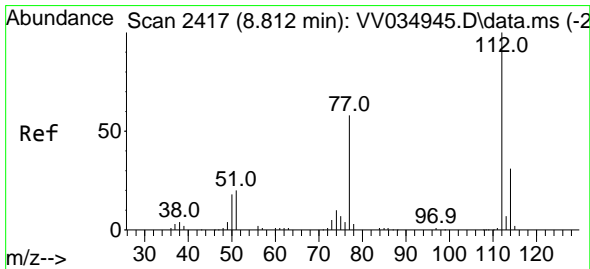
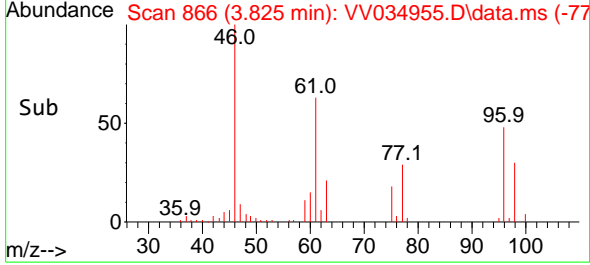
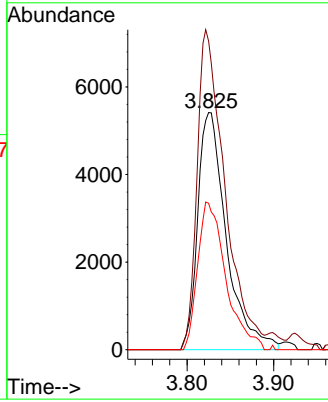
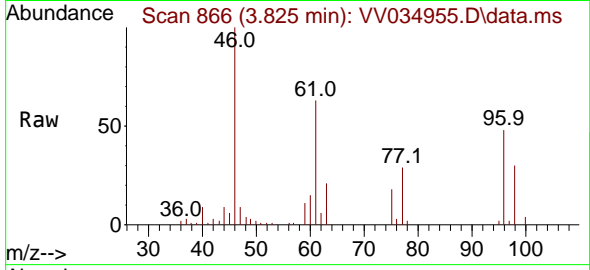


#22
 cis-1,2-Dichloroethene
 Concen: 0.891 ug/L
 RT: 3.825 min Scan# 80
 Delta R.T. 0.010 min
 Lab File: VV034955.D
 Acq: 03 Apr 2024 14:42

Instrument : MSVOA_V
 ClientSampleId :
 PMW-8S(20240328)

Tgt Ion: 96 Resp: 12433

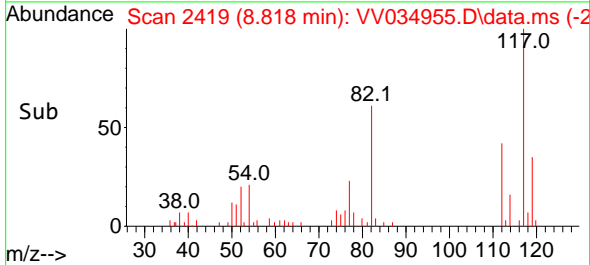
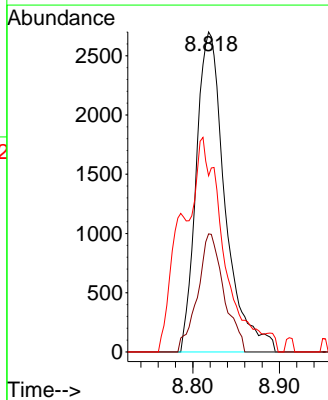
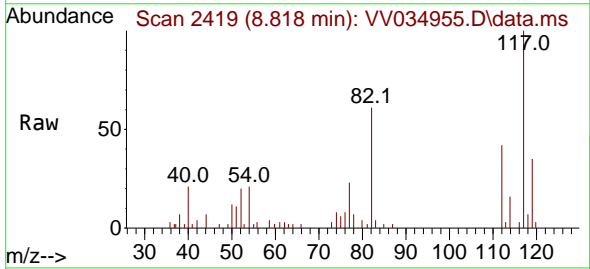
Ion	Ratio	Lower	Upper
96	100		
61	130.1	90.3	167.7
98	61.7	42.7	79.3

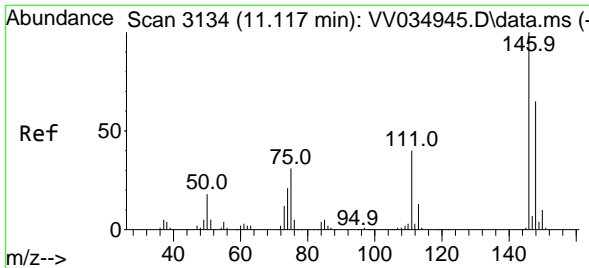


#51
 Chlorobenzene
 Concen: 0.167 ug/L
 RT: 8.818 min Scan# 2419
 Delta R.T. 0.006 min
 Lab File: VV034955.D
 Acq: 03 Apr 2024 14:42

Tgt Ion: 112 Resp: 6258

Ion	Ratio	Lower	Upper
112	100		
114	36.9	21.9	40.7
77	55.1	47.4	71.2



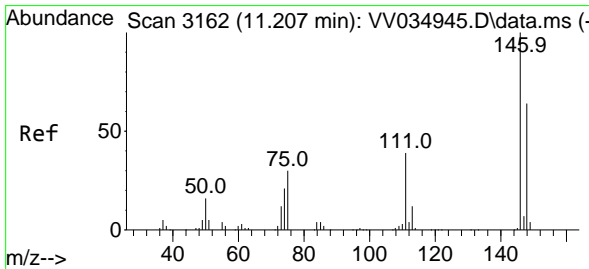
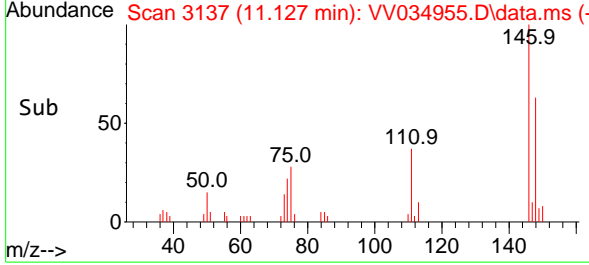
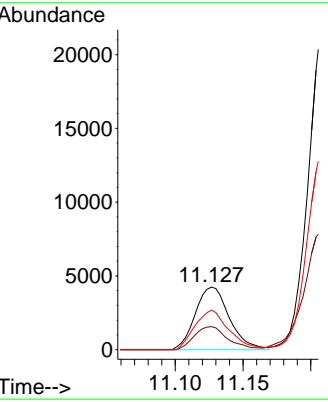
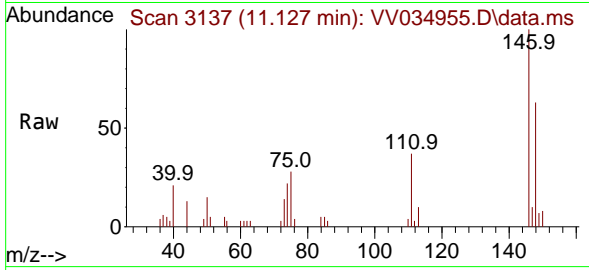


#64
 1,3-Dichlorobenzene
 Concen: 0.290 ug/L
 RT: 11.127 min Scan# 3137
 Delta R.T. 0.010 min
 Lab File: VV034955.D
 Acq: 03 Apr 2024 14:42

Instrument : MSVOA_V
 ClientSampleId : PMW-8S(20240328)

Tgt Ion:146 Resp: 7414

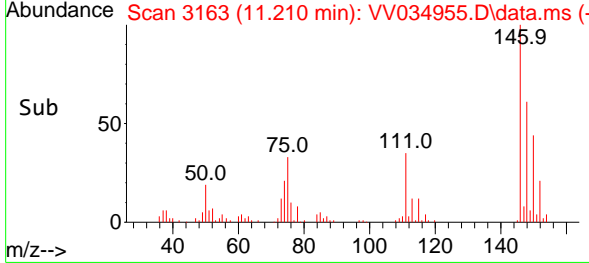
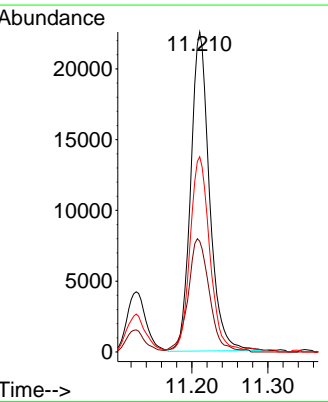
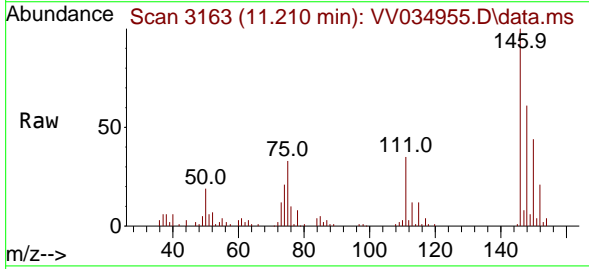
Ion	Ratio	Lower	Upper
146	100		
111	36.7	27.7	51.5
148	63.0	44.0	81.8

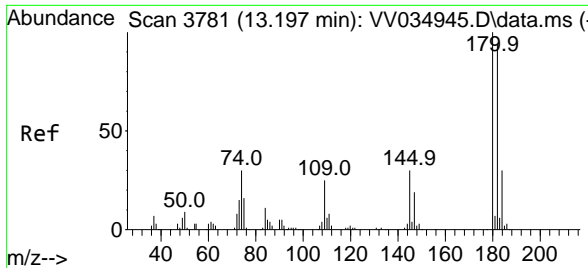


#65
 1,4-Dichlorobenzene
 Concen: 1.504 ug/L
 RT: 11.210 min Scan# 3163
 Delta R.T. 0.003 min
 Lab File: VV034955.D
 Acq: 03 Apr 2024 14:42

Tgt Ion:146 Resp: 38560

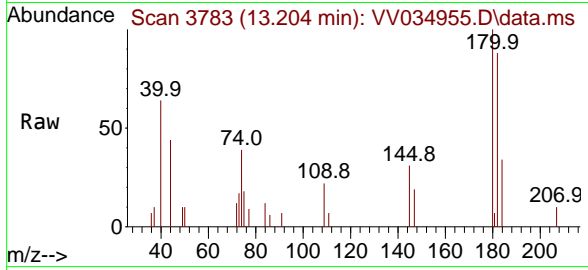
Ion	Ratio	Lower	Upper
146	100		
111	34.6	27.3	50.7
148	61.0	43.5	80.7





#70
 1,2,4-trichlorobenzene
 Concen: 0.189 ug/L
 RT: 13.204 min Scan# 31
 Delta R.T. 0.006 min
 Lab File: VV034955.D
 Acq: 03 Apr 2024 14:42

Instrument :
 MSVOA_V
 ClientSampleId :
 PMW-8S(20240328)



Tgt Ion:180 Resp: 2822

Ion	Ratio	Lower	Upper
180	100		
182	93.7	75.3	112.9
145	29.6	23.4	35.0

