

Data Path : Z:\VOASRV\HPCHEM1\MSVOA\_V\DATA\VV040519\  
 Data File : VV010135.D  
 Acq On : 05 Apr 2019 17:04  
 Operator : SY/MD  
 Sample : K2168-09  
 Misc : 4.67G/10mL/MSVOA\_V/SOIL  
 ALS Vial : 1 Sample Multiplier: 1

Instrument :  
 MSVOA\_V  
 ClientSampleID :  
 BF636

Quant Time: Apr 05 23:50:15 2019  
 Quant Method : Z:\VOASRV\HPCHEM1\MSVOA\_V\METHOD\SOM2VLM040219S.M  
 Quant Title : VOC Analysis  
 QLast Update : Fri Apr 05 23:46:15 2019  
 Response via : Initial Calibration

Internal Standards	R.T.	QIon	Response	Conc	Units	Dev(Min)
1) 1,4-Difluorobenzene	5.67	114	137115	25.00	ug/L	0.00
28) Chlorobenzene-d5	8.90	117	176344	25.00	ug/L	0.00
60) 1,4-Dichlorobenzene-d4	11.30	152	85213	25.00	ug/L	0.00

## System Monitoring Compounds

4) Vinyl Chloride-d3	1.32	65	13052	7.11	ug/L	0.00
Spiked Amount	25.000	Range	30 - 150	Recovery	=	28.44%#
7) Chloroethane-d5	1.58	69	28208	12.37	ug/L	0.00
Spiked Amount	25.000	Range	30 - 150	Recovery	=	49.48%
10) 1,1-Dichloroethene-d2	2.13	63	34485	7.45	ug/L	0.00
Spiked Amount	25.000	Range	45 - 110	Recovery	=	29.80%#
20) 2-Butanone-d5	4.12	46	187	0.36	ug/L	0.18
Spiked Amount	50.000	Range	20 - 135	Recovery	=	0.72%#
24) Chloroform-d	4.40	84	102322	29.62	ug/L	0.00
Spiked Amount	25.000	Range	40 - 150	Recovery	=	118.48%
26) 1,2-Dichloroethane-d4	5.08	65	91897	47.55	ug/L	0.00
Spiked Amount	25.000	Range	70 - 130	Recovery	=	190.20%#
29) Benzene-d6	5.10	84	187070	20.46	ug/L	0.00
Spiked Amount	25.000	Range	20 - 135	Recovery	=	81.84%
33) 1,2-Dichloropropane-d6	6.12	67	79312	29.39	ug/L	0.00
Spiked Amount	25.000	Range	70 - 120	Recovery	=	117.56%
37) Toluene-d8	7.36	98	182229	20.68	ug/L	0.00
Spiked Amount	25.000	Range	30 - 130	Recovery	=	82.72%
38) trans-1,3-Dichloropropene-	7.67	79	31599	27.39	ug/L	0.00
Spiked Amount	25.000	Range	30 - 135	Recovery	=	109.56%
39) 2-Hexanone-d5	8.14	63	14609	26.99	ug/L	0.00
Spiked Amount	50.000	Range	20 - 135	Recovery	=	53.98%
48) 1,1,2,2-Tetrachloroethane-	10.26	84	89158	33.50	ug/L	0.00
Spiked Amount	25.000	Range	45 - 120	Recovery	=	134.00%#
61) 1,2-Dichlorobenzene-d4	11.67	152	98500	29.67	ug/L	0.00
Spiked Amount	25.000	Range	75 - 120	Recovery	=	118.68%

## Target Compounds

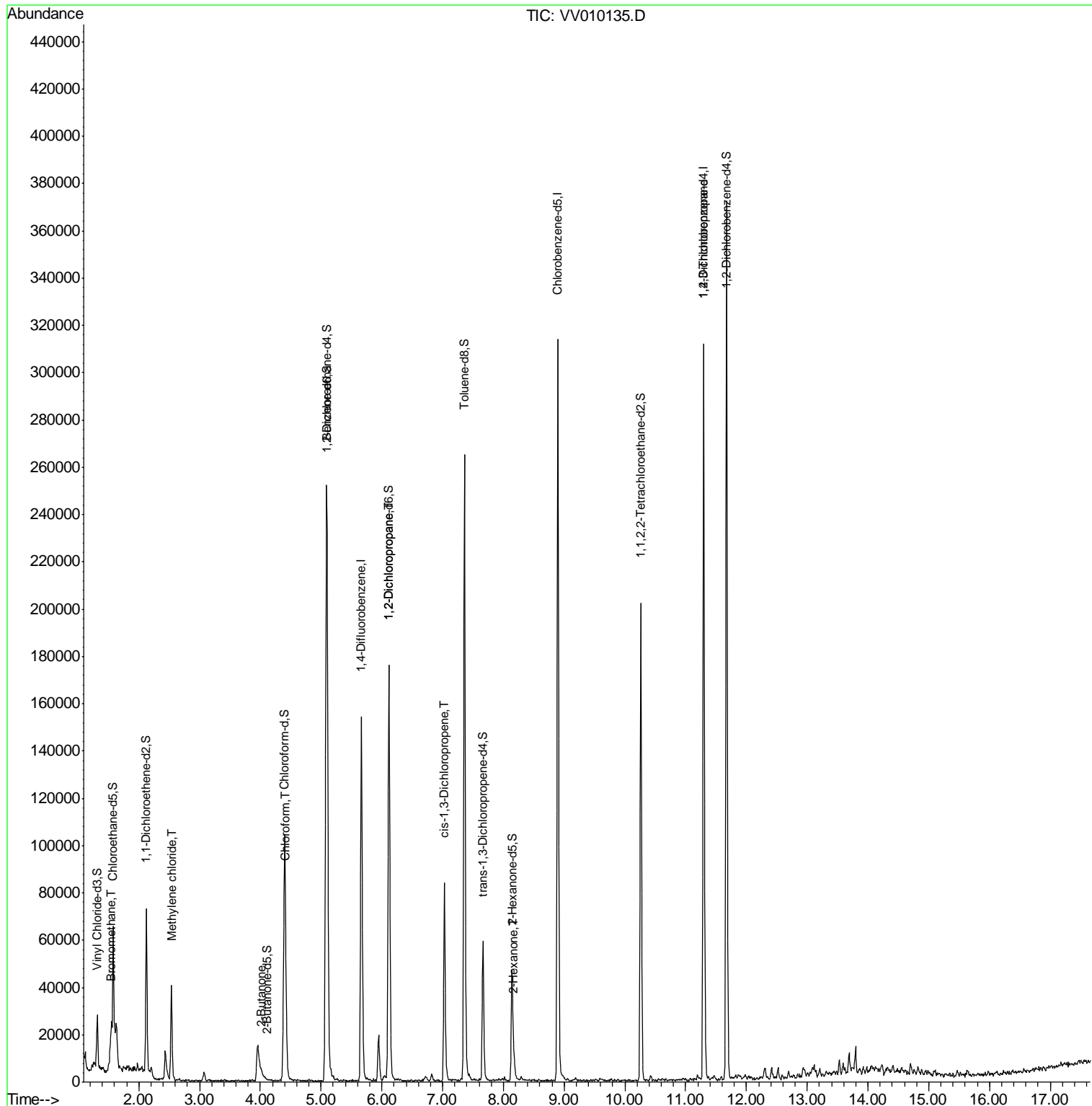
Target Compounds	R.T.	QIon	Response	Conc	Units	Qvalue
6) Bromomethane	1.54	94	943	0.433	ug/L	72
16) Methylene chloride	2.53	84	17187	7.134	ug/L	88
21) 2-Butanone	4.03	43	771	1.363	ug/L #	49
25) Chloroform	4.42	83	6044	1.939	ug/L	76
40) 1,2-Dichloropropane	6.12	63	9022	4.141	ug/L #	86
42) cis-1,3-Dichloropropene	7.03	75	2431	0.771	ug/L	85
49) 2-Hexanone	8.17	43	3204	2.783	ug/L #	44
59) 1,2,3-Trichloropropane	11.30	75	10713	6.021	ug/L	96

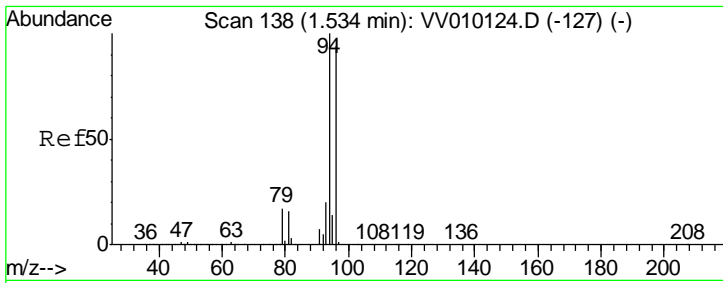
(#) = qualifier out of range (m) = manual integration (+) = signals summed

Data Path : Z:\VOASRV\HPCHEM1\MSVOA\_V\DATA\VV040519\  
 Data File : VV010135.D  
 Acq On : 05 Apr 2019 17:04  
 Operator : SY/MD  
 Sample : K2168-09  
 Misc : 4.67G/10mL/MSVOA\_V/SOIL  
 ALS Vial : 1 Sample Multiplier: 1

Instrument :  
 MSVOA\_V  
 Client Sampled :  
 BF636

Quant Time: Apr 05 23:50:15 2019  
 Quant Method : Z:\VOASRV\HPCHEM1\MSVOA\_V\METHOD\SOM2VLM040219S.M  
 Quant Title : VOC Analysis  
 QLast Update : Fri Apr 05 23:46:15 2019  
 Response via : Initial Calibration

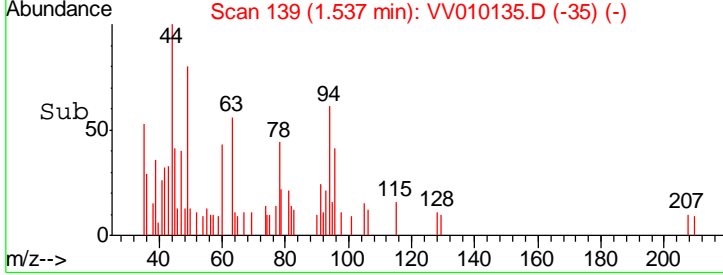
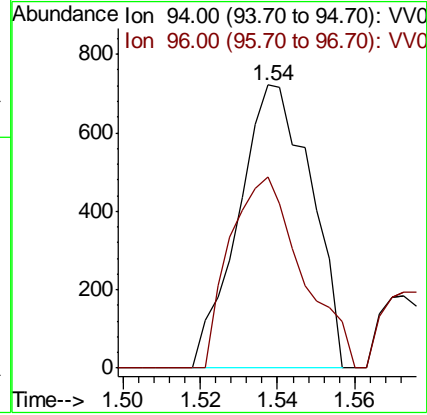
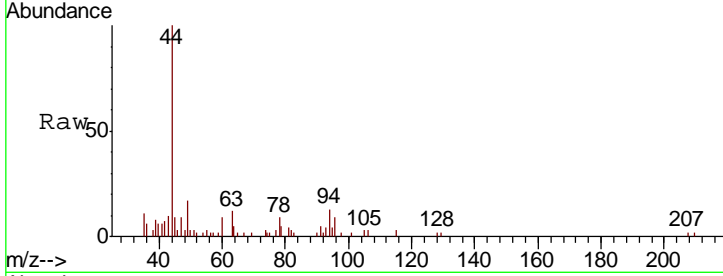




#6  
 Bromomethane  
 Concen: 0.433 ug/L  
 RT: 1.54 min Scan# 139  
 Delta R.T. 0.00 min  
 Lab File: VV010135.D  
 Acq: 05 Apr 2019 17:04

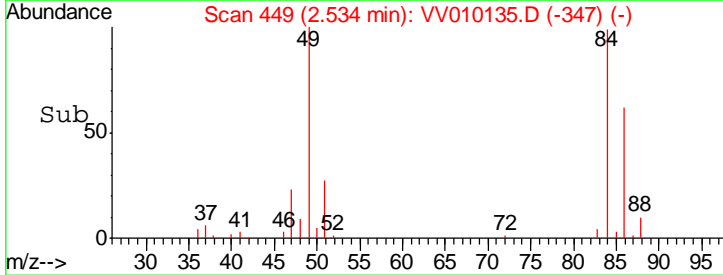
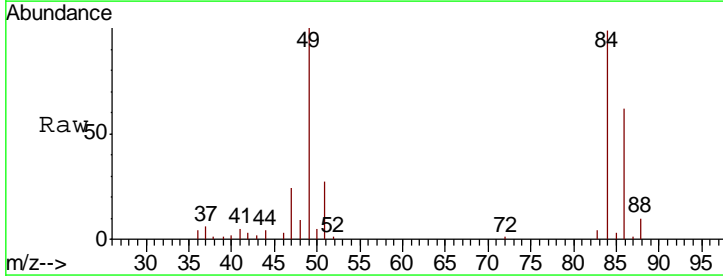
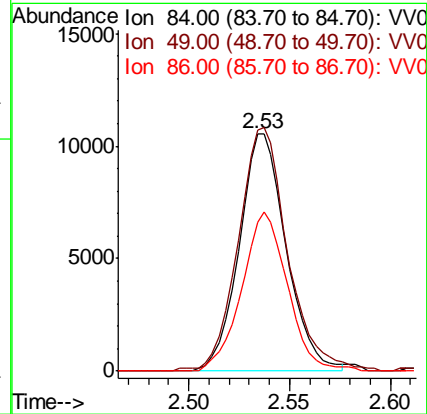
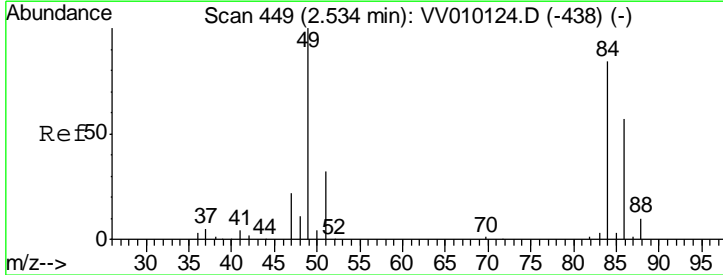
Instrument : MSVOA\_V  
 ClientSampled : BF636

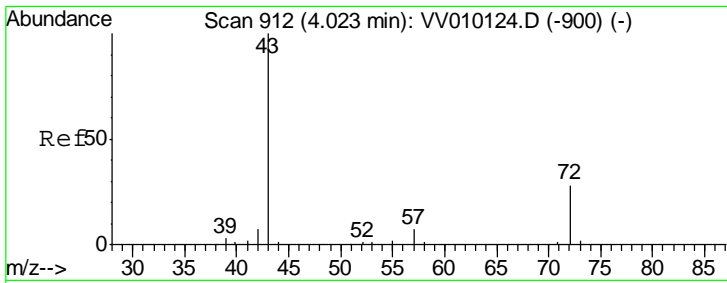
Tgt Ion	Resp	Lower	Upper
94	100		
96	66.9	9.4	177.8



#16  
 Methylene chloride  
 Concen: 7.134 ug/L  
 RT: 2.53 min Scan# 449  
 Delta R.T. -0.00 min  
 Lab File: VV010135.D  
 Acq: 05 Apr 2019 17:04

Tgt Ion	Resp	Lower	Upper
84	100		
49	101.3	84.3	156.5
86	62.7	45.4	84.2

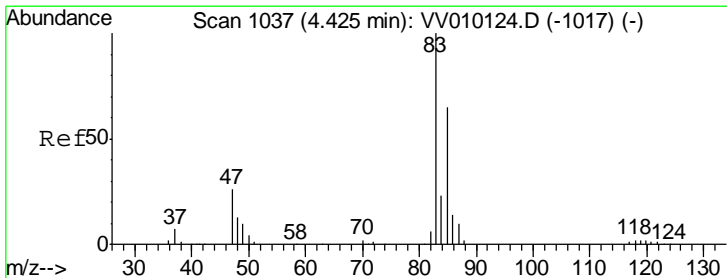
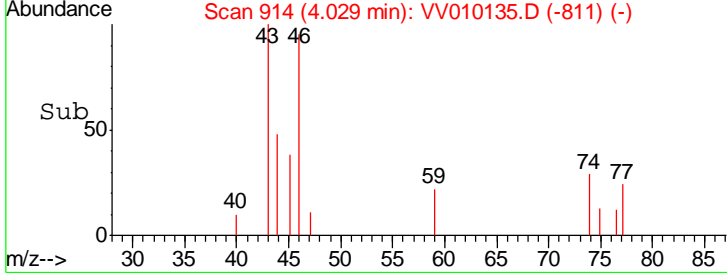
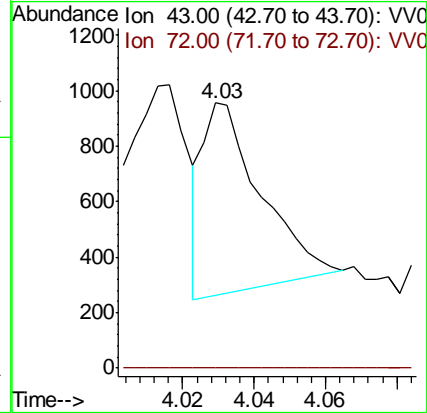
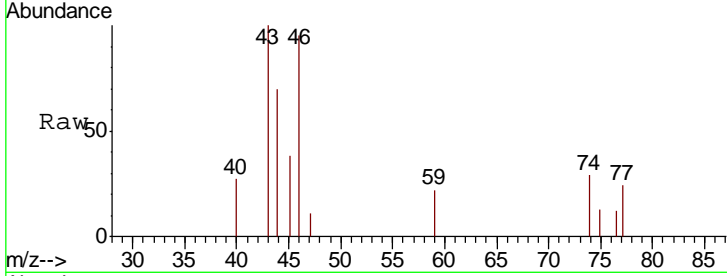




#21  
 2-Butanone  
 Concen: 1.363 ug/L  
 RT: 4.03 min Scan# 914  
 Delta R.T. 0.00 min  
 Lab File: VV010135.D  
 Acq: 05 Apr 2019 17:04

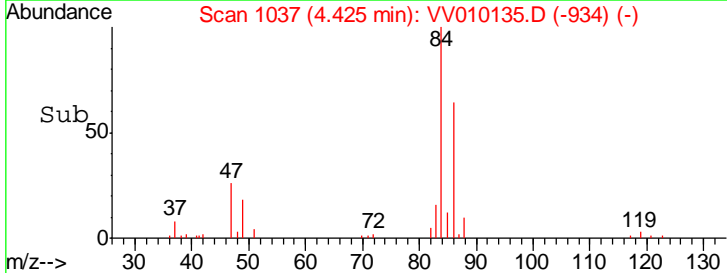
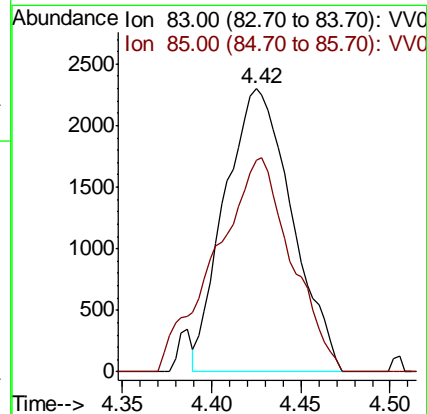
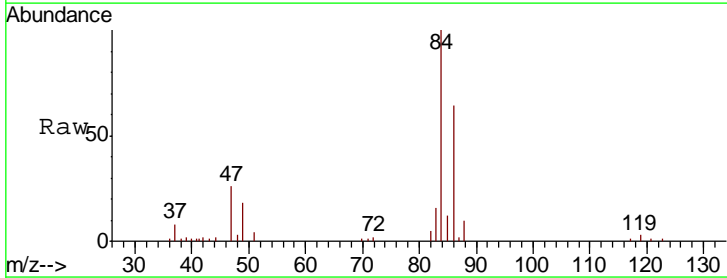
Instrument :  
 MSVOA\_V  
 ClientSampled :  
 BF636

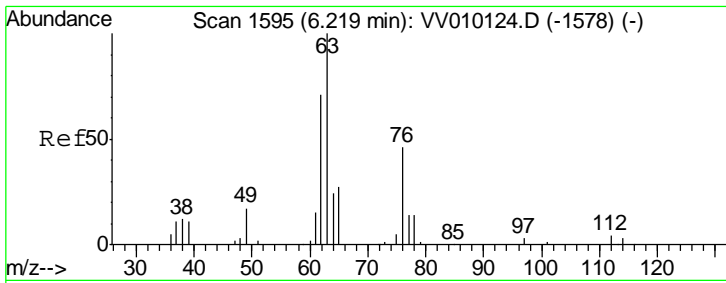
Tgt Ion	Resp	Lower	Upper
43	100		
72	0.0	12.8	38.4#



#25  
 Chloroform  
 Concen: 1.939 ug/L  
 RT: 4.42 min Scan# 1037  
 Delta R.T. 0.00 min  
 Lab File: VV010135.D  
 Acq: 05 Apr 2019 17:04

Tgt Ion	Resp	Lower	Upper
83	100		
85	85.3	46.4	86.2

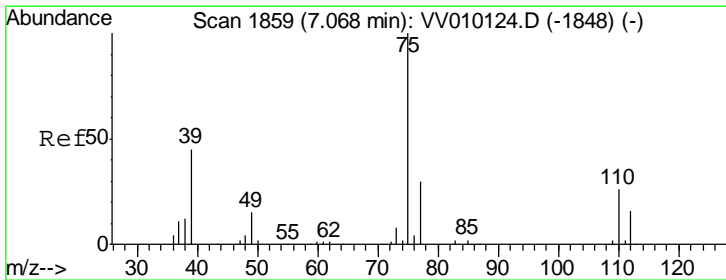
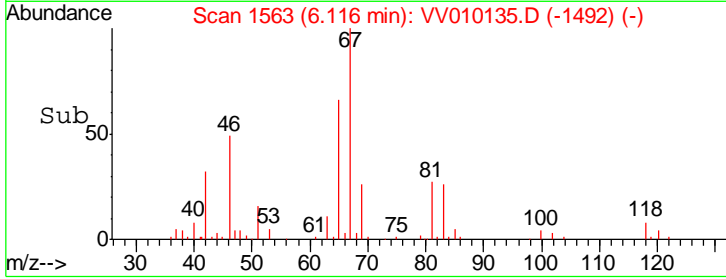
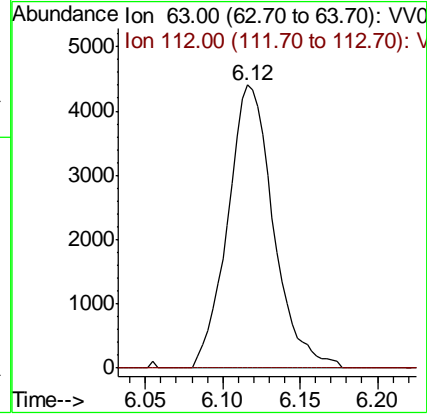
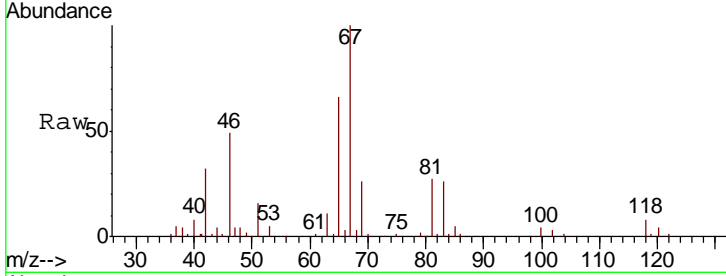




#40  
 1,2-Dichloropropane  
 Concen: 4.141 ug/L  
 RT: 6.12 min Scan# 1563  
 Delta R.T. -0.10 min  
 Lab File: VV010135.D  
 Acq: 05 Apr 2019 17:04

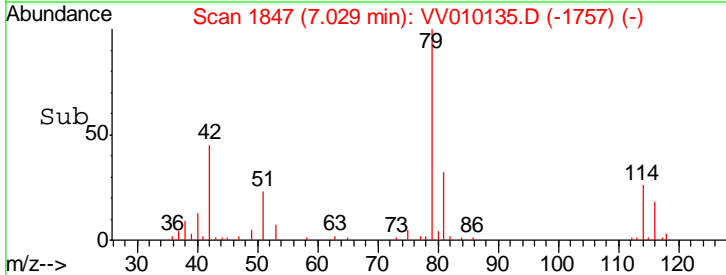
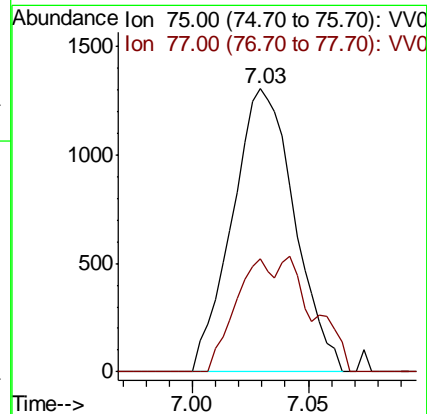
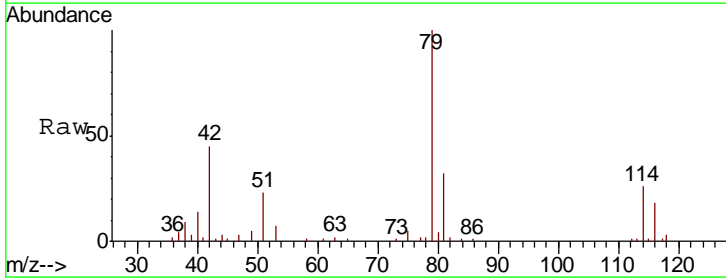
Instrument :  
 MSVOA\_V  
 ClientSampled :  
 BF636

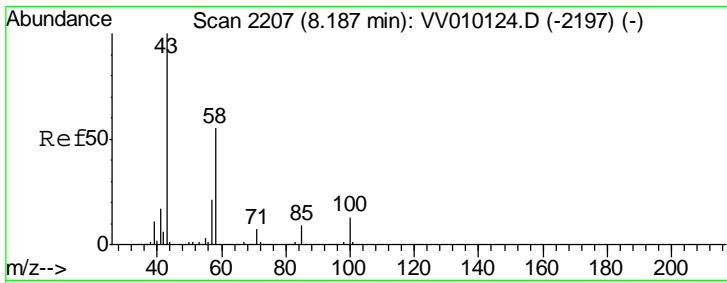
Tgt Ion: 63 Resp: 9022  
 Ion Ratio Lower Upper  
 63 100  
 112 0.0 3.6 5.4#



#42  
 cis-1,3-Dichloropropene  
 Concen: 0.771 ug/L  
 RT: 7.03 min Scan# 1847  
 Delta R.T. -0.04 min  
 Lab File: VV010135.D  
 Acq: 05 Apr 2019 17:04

Tgt Ion: 75 Resp: 2431  
 Ion Ratio Lower Upper  
 75 100  
 77 40.1 22.1 41.1

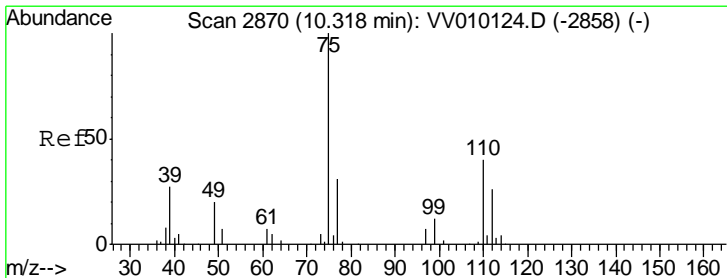
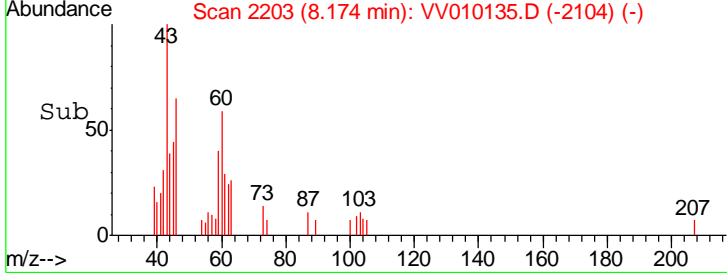
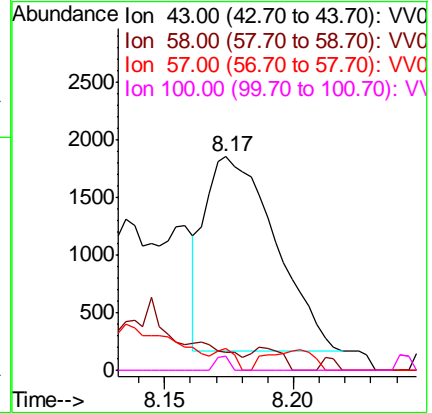
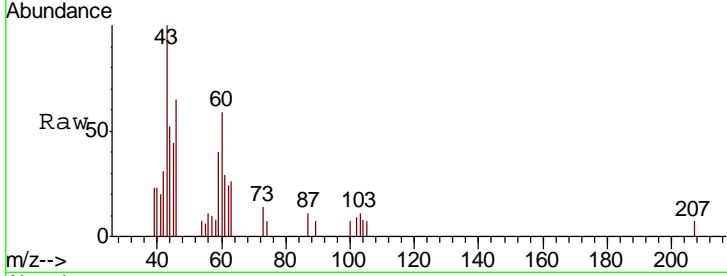




#49  
 2-Hexanone  
 Concen: 2.783 ug/L  
 RT: 8.17 min Scan# 2203  
 Delta R.T. -0.01 min  
 Lab File: VV010135.D  
 Acq: 05 Apr 2019 17:04

Instrument : MSVOA\_V  
 ClientSampled : BF636

Tgt Ion	Resp	Lower	Upper
43	100		
58	5.3	44.3	66.5#
57	3.0	13.8	20.8#
100	1.4	10.6	15.8#



#59  
 1,2,3-Trichloropropane  
 Concen: 6.021 ug/L  
 RT: 11.30 min Scan# 3174  
 Delta R.T. 0.98 min  
 Lab File: VV010135.D  
 Acq: 05 Apr 2019 17:04

Tgt Ion	Resp	Lower	Upper
75	100		
77	34.4	25.8	38.8

