

Data Path : Z:\voasrv\HPCHEM1\MSVOA\_V\Data\VW040523\  
 Data File : VW030400.D  
 Acq On : 05 Apr 2023 14:55  
 Operator : SY/MD  
 Sample : 02194-05  
 Misc : 25.0mL/MSVOA\_V/WATER  
 ALS Vial : 10 Sample Multiplier: 1

Instrument :  
 MSVOA\_V  
 ClientSampleId :  
 BHDW3

Quant Time: Apr 06 05:27:20 2023  
 Quant Method : Z:\voasrv\HPCHEM1\MSVOA\_V\Method\SFAMVTR032323WMA.M  
 Quant Title : TRACE VOA SFAM1.0  
 QLast Update : Fri Mar 31 05:37:21 2023  
 Response via : Initial Calibration

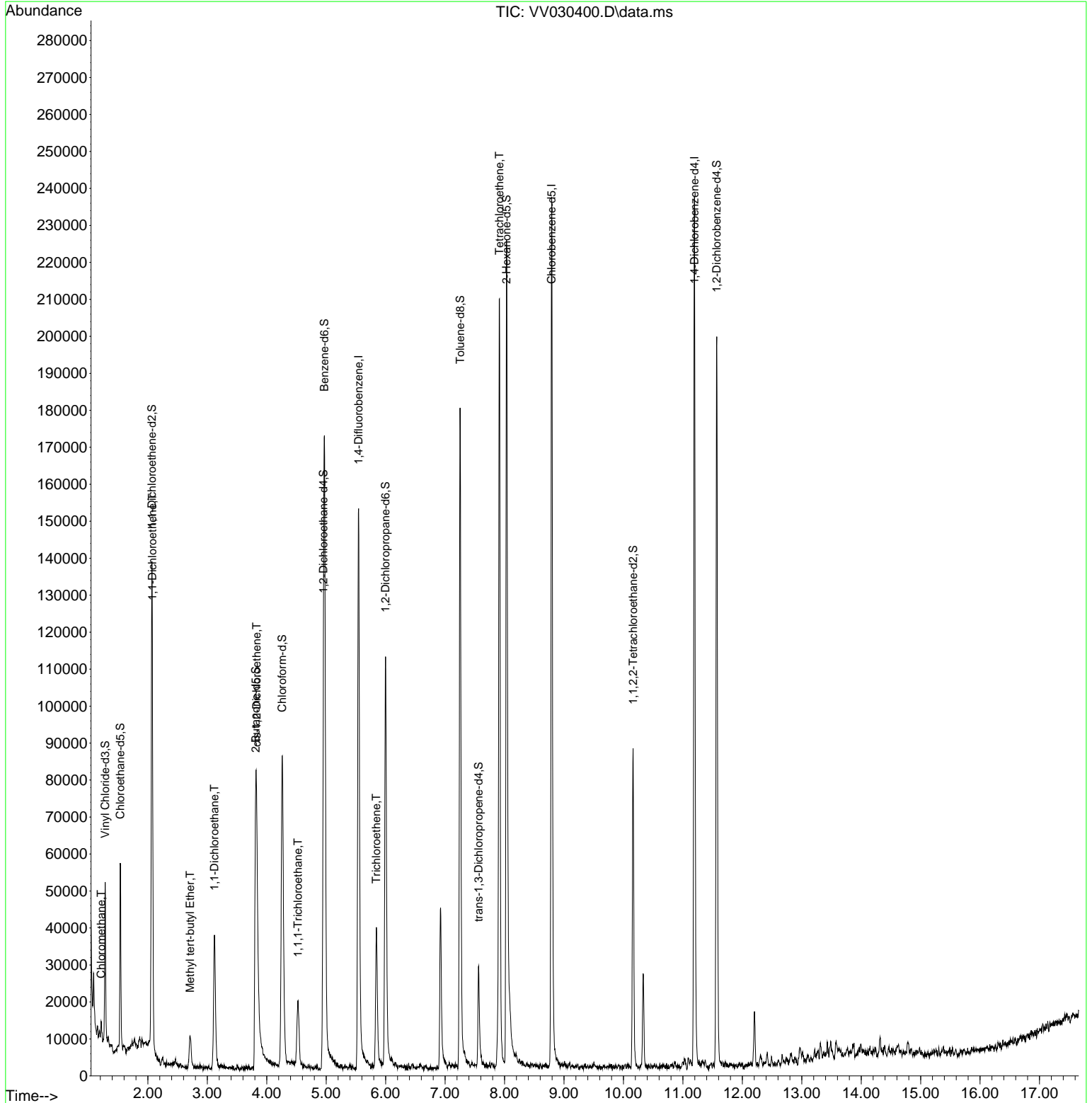
Compound	R.T.	QIon	Response	Conc	Units	Dev(Min)
Internal Standards						
1) 1,4-Difluorobenzene	5.545	114	133245	5.000	ug/L	0.00
28) Chlorobenzene-d5	8.793	117	127176	5.000	ug/L	0.00
58) 1,4-Dichlorobenzene-d4	11.194	152	63205	5.000	ug/L	0.00
System Monitoring Compounds						
4) Vinyl Chloride-d3	1.282	65	24795	2.810	ug/L	0.00
Spiked Amount	5.000	Range 40 - 130	Recovery	=	56.200%	
7) Chloroethane-d5	1.536	69	30947	3.614	ug/L	0.00
Spiked Amount	5.000	Range 65 - 130	Recovery	=	72.200%	
11) 1,1-Dichloroethene-d2	2.066	63	57020	2.723	ug/L	0.00
Spiked Amount	5.000	Range 60 - 125	Recovery	=	54.400%#	
20) 2-Butanone-d5	3.812	46	102244	44.825	ug/L	0.00
Spiked Amount	50.000	Range 40 - 130	Recovery	=	89.640%	
24) Chloroform-d	4.259	84	90334	4.229	ug/L	0.00
Spiked Amount	5.000	Range 70 - 125	Recovery	=	84.600%	
26) 1,2-Dichloroethane-d4	4.953	65	46479	4.612	ug/L	0.00
Spiked Amount	5.000	Range 70 - 130	Recovery	=	92.200%	
32) Benzene-d6	4.970	84	148704	4.149	ug/L	0.00
Spiked Amount	5.000	Range 70 - 125	Recovery	=	83.000%	
36) 1,2-Dichloropropane-d6	5.998	67	50366	4.489	ug/L	0.00
Spiked Amount	5.000	Range 60 - 140	Recovery	=	89.800%	
41) Toluene-d8	7.252	98	119785	3.640	ug/L	0.00
Spiked Amount	5.000	Range 70 - 130	Recovery	=	72.800%	
43) trans-1,3-Dichloroprop...	7.564	79	16451	3.894	ug/L	0.00
Spiked Amount	5.000	Range 55 - 130	Recovery	=	77.800%	
46) 2-Hexanone-d5	8.034	63	80978	47.705	ug/L	0.00
Spiked Amount	50.000	Range 45 - 130	Recovery	=	95.420%	
56) 1,1,2,2-Tetrachloroeth...	10.162	84	38938	4.403	ug/L	0.00
Spiked Amount	5.000	Range 65 - 120	Recovery	=	88.000%	
66) 1,2-Dichlorobenzene-d4	11.571	152	50862	4.502	ug/L	0.00
Spiked Amount	5.000	Range 80 - 120	Recovery	=	90.000%	
Target Compounds						
3) Chloromethane	1.217	50	3980	0.186	ug/L	94
12) 1,1-Dichloroethene	2.076	96	19108	1.716	ug/L #	84
17) Methyl tert-butyl Ether	2.712	73	7442	0.316	ug/L	96
19) 1,1-Dichloroethane	3.121	63	34438	1.515	ug/L	97
22) cis-1,2-Dichloroethene	3.828	96	20279	1.723	ug/L	98
29) 1,1,1-Trichloroethane	4.523	97	14047	0.687	ug/L	95
34) Trichloroethene	5.844	95	13118	1.077	ug/L	93
47) Tetrachloroethene	7.915	164	47821	4.448	ug/L	96

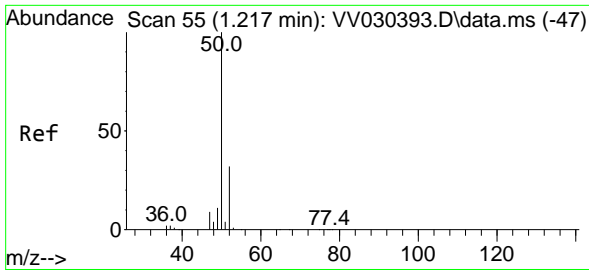
(#) = qualifier out of range (m) = manual integration (+) = signals summed

Data Path : Z:\voasrv\HPCHEM1\MSVOA\_V\Data\VV040523\  
 Data File : VV030400.D  
 Acq On : 05 Apr 2023 14:55  
 Operator : SY/MD  
 Sample : 02194-05  
 Misc : 25.0mL/MSVOA\_V/WATER  
 ALS Vial : 10 Sample Multiplier: 1

Instrument :  
 MSVOA\_V  
 ClientSampleId :  
 BHDW3

Quant Time: Apr 06 05:27:20 2023  
 Quant Method : Z:\voasrv\HPCHEM1\MSVOA\_V\Method\SFAMVTR032323WMA.M  
 Quant Title : TRACE VOA SFAM1.0  
 QLast Update : Fri Mar 31 05:37:21 2023  
 Response via : Initial Calibration

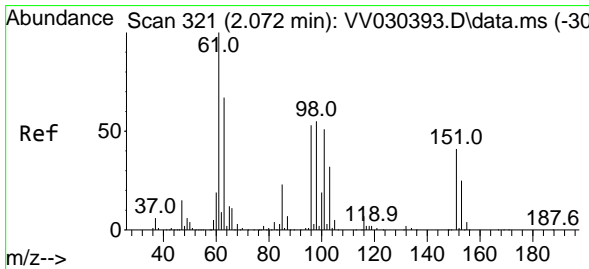
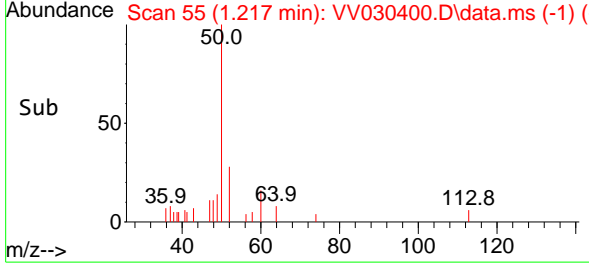
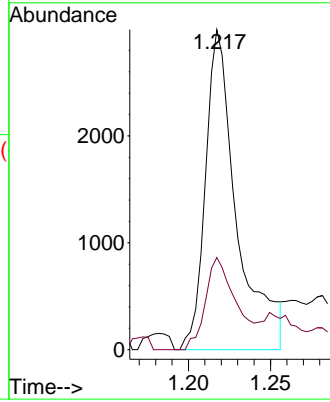
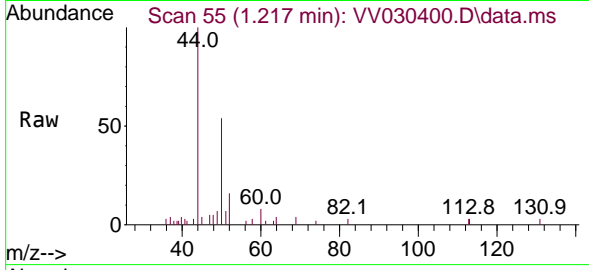




#3  
 Chloromethane  
 Concen: 0.186 ug/L  
 RT: 1.217 min Scan# 51  
 Delta R.T. 0.000 min  
 Lab File: VV030400.D  
 Acq: 05 Apr 2023 14:55

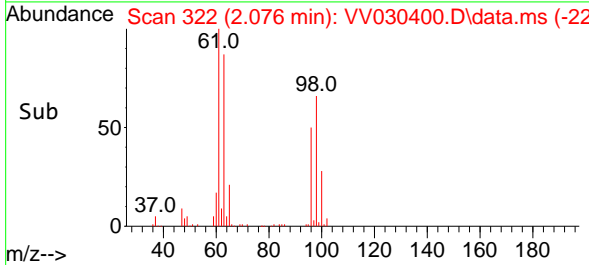
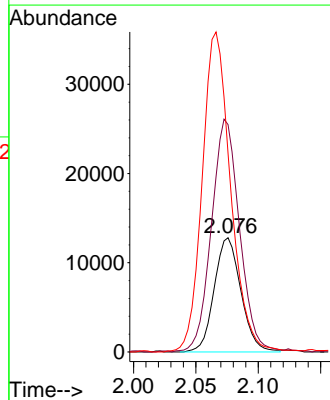
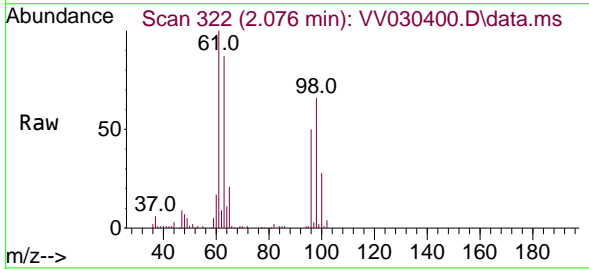
Instrument :  
 MSVOA\_V  
 ClientSampleId :  
 BHDW3

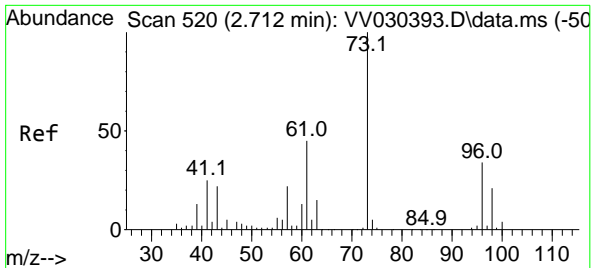
Tgt Ion: 50 Resp: 3980  
 Ion Ratio Lower Upper  
 50 100  
 52 28.8 22.3 41.5



#12  
 1,1-Dichloroethene  
 Concen: 1.716 ug/L  
 RT: 2.076 min Scan# 322  
 Delta R.T. 0.000 min  
 Lab File: VV030400.D  
 Acq: 05 Apr 2023 14:55

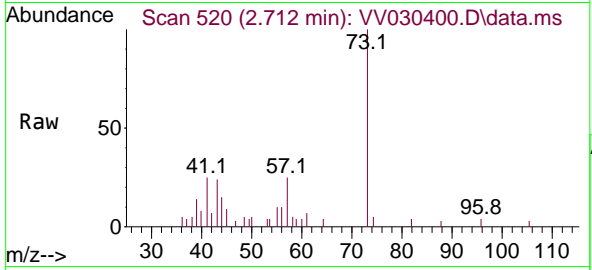
Tgt Ion: 96 Resp: 19108  
 Ion Ratio Lower Upper  
 96 100  
 61 199.0 136.3 253.1  
 63 173.8 92.1 171.1#





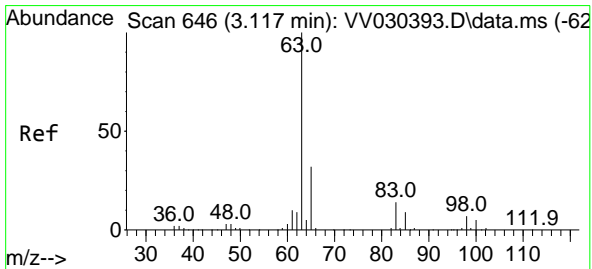
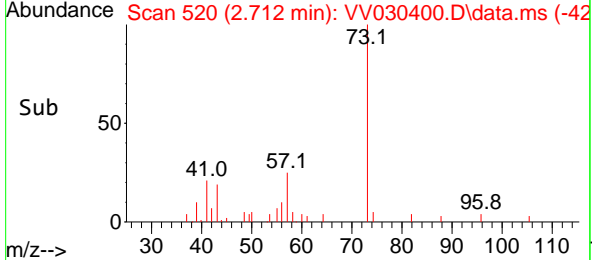
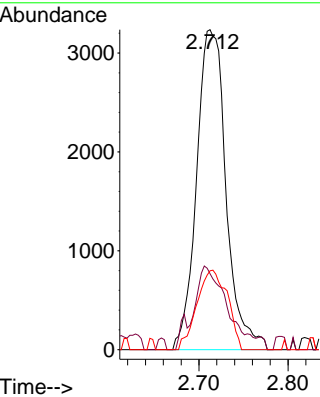
#17  
 Methyl tert-butyl Ether  
 Concen: 0.316 ug/L  
 RT: 2.712 min Scan# 51  
 Delta R.T. 0.000 min  
 Lab File: VV030400.D  
 Acq: 05 Apr 2023 14:55

Instrument : MSVOA\_V  
 ClientSampleId : BHDW3

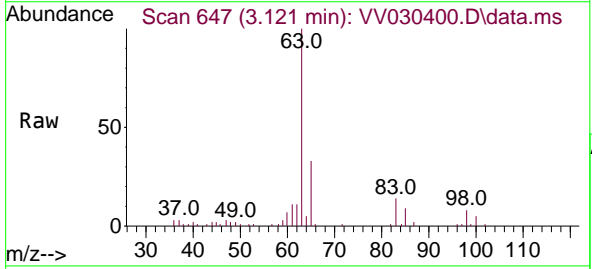


Tgt Ion: 73 Resp: 7442

Ion	Ratio	Lower	Upper
73	100		
43	21.1	17.4	26.2
57	25.7	18.3	27.5

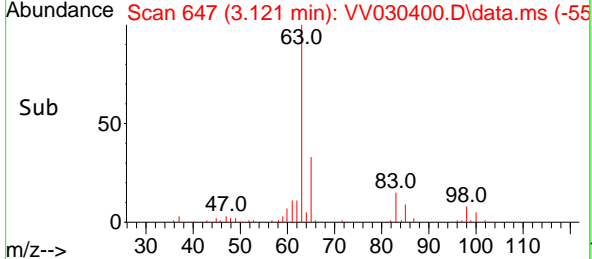
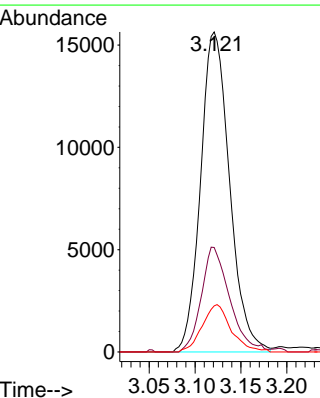


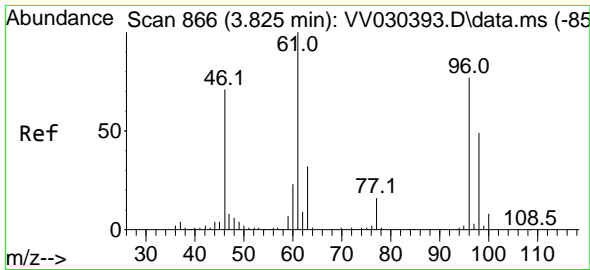
#19  
 1,1-Dichloroethane  
 Concen: 1.515 ug/L  
 RT: 3.121 min Scan# 647  
 Delta R.T. 0.003 min  
 Lab File: VV030400.D  
 Acq: 05 Apr 2023 14:55



Tgt Ion: 63 Resp: 34438

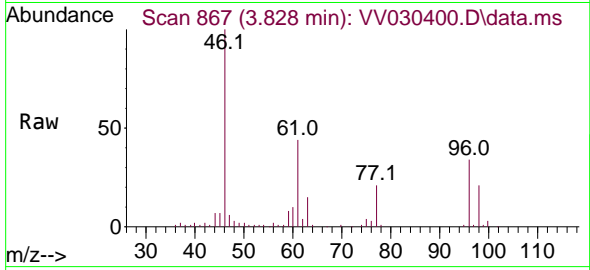
Ion	Ratio	Lower	Upper
63	100		
65	32.7	21.7	40.3
83	14.4	9.1	16.9



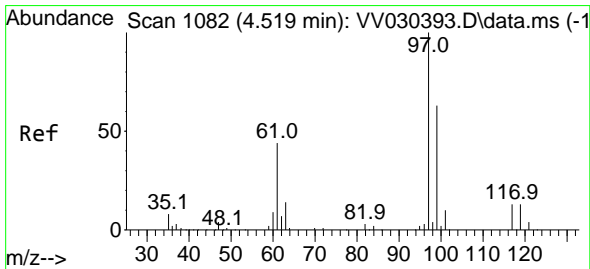
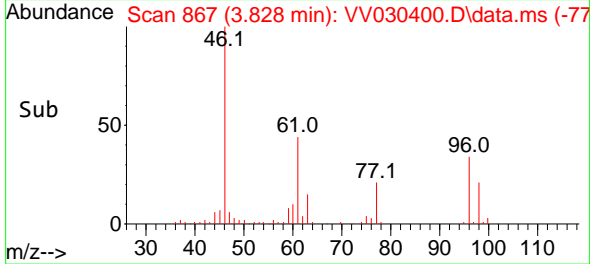
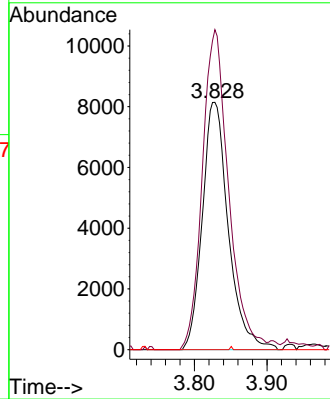


#22  
 cis-1,2-Dichloroethene  
 Concen: 1.723 ug/L  
 RT: 3.828 min Scan# 866  
 Delta R.T. 0.003 min  
 Lab File: VV030400.D  
 Acq: 05 Apr 2023 14:55

Instrument : MSVOA\_V  
 ClientSampleId : BHDW3

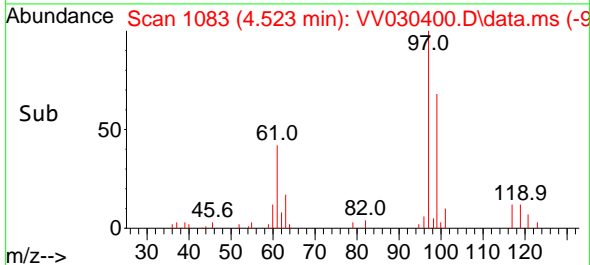
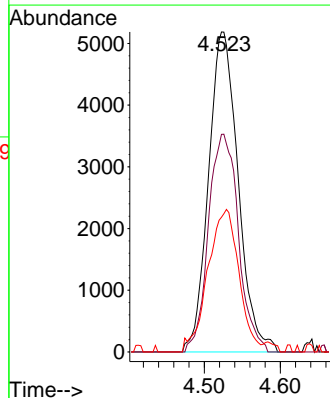
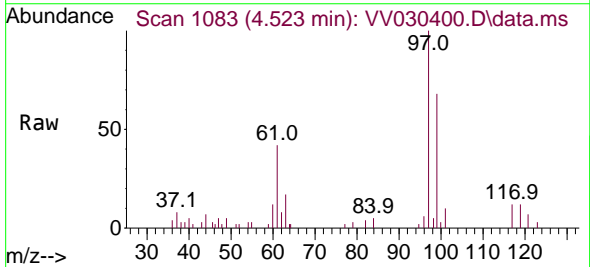


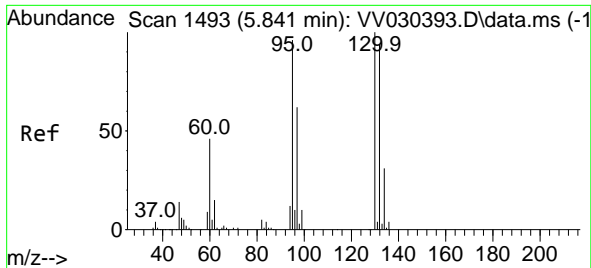
Tgt Ion: 96 Resp: 20279  
 Ion Ratio Lower Upper  
 96 100  
 61 129.4 92.0 170.8  
 68 0.0 0.0 0.0



#29  
 1,1,1-Trichloroethane  
 Concen: 0.687 ug/L  
 RT: 4.523 min Scan# 1083  
 Delta R.T. 0.000 min  
 Lab File: VV030400.D  
 Acq: 05 Apr 2023 14:55

Tgt Ion: 97 Resp: 14047  
 Ion Ratio Lower Upper  
 97 100  
 99 68.6 50.9 76.3  
 61 46.5 35.9 53.9

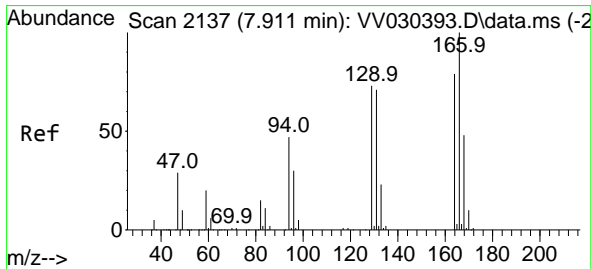
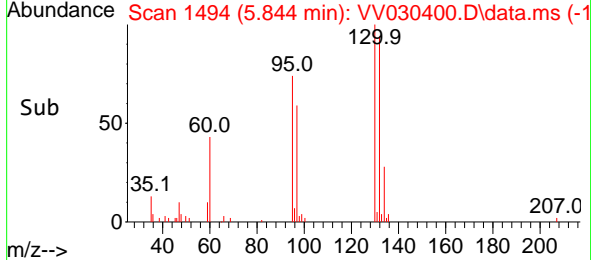
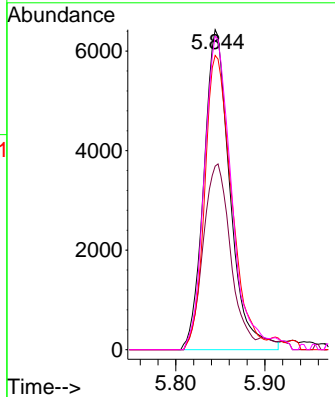
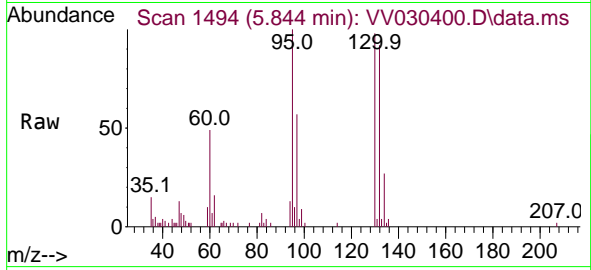




#34  
 Trichloroethene  
 Concen: 1.077 ug/L  
 RT: 5.844 min Scan# 1494  
 Delta R.T. 0.003 min  
 Lab File: VV030400.D  
 Acq: 05 Apr 2023 14:55

Instrument : MSVOA\_V  
 ClientSampleId : BHDW3

Tgt Ion	Resp	Lower	Upper
95	13118		
97	57.3	44.2	82.2
132	91.9	69.5	129.1
130	97.9	72.2	134.0



#47  
 Tetrachloroethene  
 Concen: 4.448 ug/L  
 RT: 7.915 min Scan# 2138  
 Delta R.T. 0.003 min  
 Lab File: VV030400.D  
 Acq: 05 Apr 2023 14:55

Tgt Ion	Resp	Lower	Upper
164	47821		
129	89.6	60.8	112.8
131	85.2	61.7	114.7
166	127.9	85.6	159.0

