

Data Path : Z:\VOASRV\HPCHEM1\MSVOA V\DATA\VV040619\
 Data File : VV010153.D
 Acq On : 06 Apr 2019 15:09
 Operator : SY/MD
 Sample : K2259-19
 Misc : 5.00G/10mL/MSVOA V/SOIL
 ALS Vial : 1 Sample Multiplier: 1

Instrument :
 MSVOA_V
 ClientSampleId :
 ETJ36

Integration Parameters: LSCINT.P

Integrator: RTE
 Smoothing : OFF
 Sampling : 1
 Start Thrs: 0.2
 Stop Thrs : 0

Filtering: 5
 Min Area: 0 % of largest Peak
 Max Peaks: 100
 Peak Location: TOP

If leading or trailing edge < 100 prefer < Baseline drop else tangent >
 Peak separation: 5

Method : Z:\VOASRV\HPCHEM1\MSVOA_V\METHOD\SOM2VLM040219S.M
 Title : VOC Analysis

Signal : TIC

peak #	R.T. min	first scan	max scan	last scan	PK TY	peak height	corr. area	corr. % max.	% of total
1	1.319	66	71	82	rVB	74671	77903	8.82%	1.183%
2	1.573	145	150	161	rVB	87730	102991	11.66%	1.564%
3	2.126	314	322	333	rVB	197874	275041	31.15%	4.176%
4	2.438	411	419	429	rBV2	4927	8507	0.96%	0.129%
5	2.537	440	450	466	rVB2	17304	30692	3.48%	0.466%
6	2.598	467	469	473	rBV3	616	447	0.05%	0.007%
7	2.643	480	483	486	rBV3	959	800	0.09%	0.012%
8	2.949	574	578	583	rVB2	600	546	0.06%	0.008%
9	2.978	585	587	590	rBV	375	270	0.03%	0.004%
10	3.074	609	617	628	rVV6	3020	5814	0.66%	0.088%
11	3.184	647	651	654	rVB3	529	342	0.04%	0.005%
12	3.261	671	675	677	rBV2	665	368	0.04%	0.006%
13	3.386	711	714	716	rVV	529	253	0.03%	0.004%
14	3.528	755	758	761	rBV2	347	267	0.03%	0.004%
15	3.618	782	786	791	rBV2	396	376	0.04%	0.006%
16	3.647	791	795	798	rBV2	415	363	0.04%	0.006%
17	3.804	840	844	848	rBV3	655	524	0.06%	0.008%
18	3.946	877	888	910	rVV	30915	86427	9.79%	1.312%
19	4.174	957	959	962	rBV3	405	223	0.03%	0.003%
20	4.193	962	965	967	rBV	599	285	0.03%	0.004%
21	4.325	1003	1006	1008	rBV2	507	356	0.04%	0.005%
22	4.402	1012	1030	1050	rBV	155530	384824	43.58%	5.842%
23	4.598	1089	1091	1093	rBV2	494	252	0.03%	0.004%
24	4.730	1130	1132	1135	rBV3	863	514	0.06%	0.008%
25	4.913	1187	1189	1192	rBV	399	238	0.03%	0.004%
26	4.968	1204	1206	1209	rVB2	524	239	0.03%	0.004%
27	5.097	1227	1246	1274	rBV2	353798	883024	100.00%	13.406%
28	5.544	1382	1385	1388	rBV3	573	341	0.04%	0.005%
29	5.601	1399	1403	1408	rVB4	627	501	0.06%	0.008%
30	5.663	1409	1422	1446	rBV2	274291	553085	62.64%	8.397%
31	5.901	1494	1496	1499	rVB3	645	297	0.03%	0.005%
32	5.946	1499	1510	1522	rBV5	12153	24972	2.83%	0.379%
33	6.119	1549	1564	1584	rBV	210947	430828	48.79%	6.541%
34	6.364	1636	1640	1642	rBV3	708	651	0.07%	0.010%

Data Path : Z:\VOASRV\HPCHEM1\MSVOA V\DATA\VV040619\
 Data File : VV010153.D
 Acq On : 06 Apr 2019 15:09
 Operator : SY/MD
 Sample : K2259-19
 Misc : 5.00G/10mL/MSVOA V/SOIL
 ALS Vial : 1 Sample Multiplier: 1

Instrument :
 MSVOA_V
 ClientSampleId :
 ETJ36

Integration Parameters: LSCINT.P

Integrator: RTE
 Smoothing : OFF
 Sampling : 1
 Start Thrs: 0.2
 Stop Thrs : 0

Filtering: 5
 Min Area: 0 % of largest Peak
 Max Peaks: 100
 Peak Location: TOP

If leading or trailing edge < 100 prefer < Baseline drop else tangent >
 Peak separation: 5

Method : Z:\VOASRV\HPCHEM1\MSVOA_V\METHOD\SOM2VLM040219S.M
 Title : VOC Analysis

35	6.434	1657	1662	1668	rVB2	406	468	0.05%	0.007%
36	6.457	1668	1669	1675	rVB2	577	310	0.04%	0.005%
37	6.495	1675	1681	1684	rBV	553	473	0.05%	0.007%
38	6.553	1697	1699	1703	rVB3	433	275	0.03%	0.004%
39	6.576	1703	1706	1713	rVB3	497	453	0.05%	0.007%
40	6.605	1713	1715	1720	rVB	333	252	0.03%	0.004%
41	6.643	1720	1727	1729	rBV3	785	709	0.08%	0.011%
42	6.817	1773	1781	1791	rBV6	2174	3964	0.45%	0.060%
43	6.936	1815	1818	1820	rBV	388	261	0.03%	0.004%
44	6.971	1825	1829	1833	rBV2	811	610	0.07%	0.009%
45	7.029	1833	1847	1871	rBV	100912	182546	20.67%	2.771%
46	7.148	1882	1884	1886	rBV2	541	351	0.04%	0.005%
47	7.267	1918	1921	1923	rVV2	363	228	0.03%	0.003%
48	7.360	1938	1950	1968	rBV	408895	710099	80.42%	10.781%
49	7.666	2033	2045	2060	rBV	66573	114139	12.93%	1.733%
50	7.817	2090	2092	2095	rBV2	605	490	0.06%	0.007%
51	7.917	2119	2123	2126	rVB3	906	700	0.08%	0.011%
52	7.933	2126	2128	2130	rBV2	545	337	0.04%	0.005%
53	8.048	2162	2164	2167	rVB2	812	375	0.04%	0.006%
54	8.071	2167	2171	2176	rVB3	647	479	0.05%	0.007%
55	8.135	2179	2191	2218	rBV	102816	191606	21.70%	2.909%
56	8.344	2254	2256	2259	rVB2	559	226	0.03%	0.003%
57	8.508	2305	2307	2315	rVB3	336	268	0.03%	0.004%
58	8.543	2315	2318	2322	rBV2	429	415	0.05%	0.006%
59	8.634	2342	2346	2347	rBV	653	405	0.05%	0.006%
60	8.775	2386	2390	2393	rBV3	387	365	0.04%	0.006%
61	8.814	2399	2402	2406	rBV	387	343	0.04%	0.005%
62	8.897	2412	2428	2451	rBV	431225	738523	83.64%	11.212%
63	9.055	2472	2477	2480	rBV5	881	888	0.10%	0.013%
64	9.148	2504	2506	2510	rBV	395	284	0.03%	0.004%
65	9.341	2563	2566	2569	rBV	380	336	0.04%	0.005%
66	9.473	2604	2607	2609	rVB2	528	240	0.03%	0.004%
67	9.508	2616	2618	2621	rBV	485	244	0.03%	0.004%
68	10.000	2769	2771	2774	rVB	550	233	0.03%	0.004%
69	10.051	2783	2787	2791	rBV2	572	338	0.04%	0.005%
70	10.074	2791	2794	2796	rBV2	366	250	0.03%	0.004%
71	10.260	2839	2852	2873	rBV	209239	331384	37.53%	5.031%

Data Path : Z:\VOASRV\HPCHEM1\MSVOA V\DATA\VV040619\
 Data File : VV010153.D
 Acq On : 06 Apr 2019 15:09
 Operator : SY/MD
 Sample : K2259-19
 Misc : 5.00G/10mL/MSVOA V/SOIL
 ALS Vial : 1 Sample Multiplier: 1

Instrument :
 MSVOA_V
 ClientSampleId :
 ETJ36

Integration Parameters: LSCINT.P

Integrator: RTE
 Smoothing : OFF Filtering: 5
 Sampling : 1 Min Area: 0 % of largest Peak
 Start Thrs: 0.2 Max Peaks: 100
 Stop Thrs : 0 Peak Location: TOP

If leading or trailing edge < 100 prefer < Baseline drop else tangent >
 Peak separation: 5

Method : Z:\VOASRV\HPCHEM1\MSVOA_V\METHOD\SOM2VLM040219S.M
 Title : VOC Analysis

72	10.428	2893	2904	2916	rBV3	9036	15531	1.76%	0.236%
73	10.547	2938	2941	2942	rBV2	659	384	0.04%	0.006%
74	10.592	2953	2955	2959	rBV2	795	422	0.05%	0.006%
75	10.669	2977	2979	2983	rBV3	598	419	0.05%	0.006%
76	10.707	2987	2991	2992	rBV2	333	264	0.03%	0.004%
77	10.772	3008	3011	3013	rBV2	645	383	0.04%	0.006%
78	10.881	3042	3045	3046	rBV2	732	274	0.03%	0.004%
79	10.913	3052	3055	3056	rBV2	541	284	0.03%	0.004%
80	11.148	3124	3128	3129	rBV	373	276	0.03%	0.004%
81	11.186	3136	3140	3143	rBV3	1260	1143	0.13%	0.017%
82	11.228	3146	3153	3154	rBV5	1272	1127	0.13%	0.017%
83	11.296	3162	3174	3193	rBV	407049	678378	76.82%	10.299%
84	11.576	3257	3261	3264	rBV5	1661	1858	0.21%	0.028%
85	11.672	3278	3291	3314	rBV	429284	700710	79.35%	10.638%
86	11.759	3316	3318	3320	rBV	740	327	0.04%	0.005%
87	11.839	3340	3343	3348	rBV3	771	582	0.07%	0.009%
88	11.913	3364	3366	3372	rBV5	529	471	0.05%	0.007%
89	12.209	3454	3458	3461	rBV3	494	420	0.05%	0.006%
90	12.248	3466	3470	3475	rBV2	528	611	0.07%	0.009%
91	12.299	3477	3486	3494	rVV3	6741	10022	1.13%	0.152%
92	12.354	3501	3503	3506	rVB	755	350	0.04%	0.005%
93	12.379	3509	3511	3512	rBV	509	224	0.03%	0.003%
94	12.720	3613	3617	3624	rBV3	918	915	0.10%	0.014%
95	12.810	3643	3645	3647	rVB	667	274	0.03%	0.004%
96	13.145	3747	3749	3753	rVB	578	355	0.04%	0.005%
97	13.566	3876	3880	3883	rBV3	534	575	0.07%	0.009%
98	13.791	3944	3950	3960	rVB3	9404	12824	1.45%	0.195%
99	14.656	4217	4219	4223	rBV2	612	478	0.05%	0.007%
100	14.762	4249	4252	4254	rBV2	636	420	0.05%	0.006%

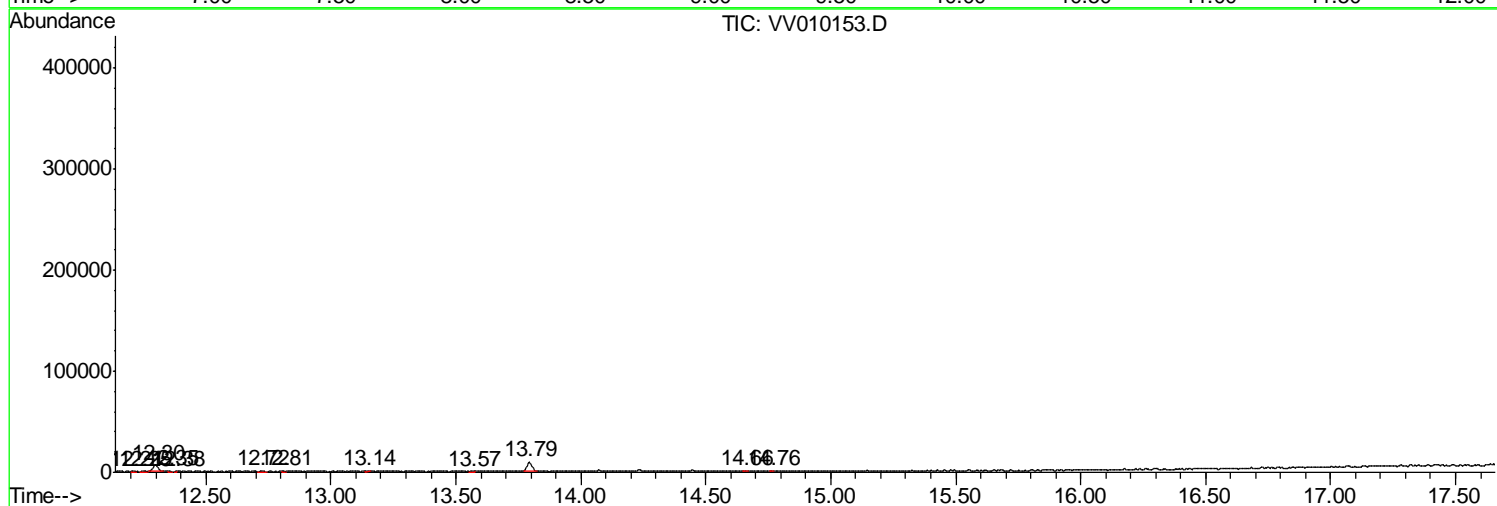
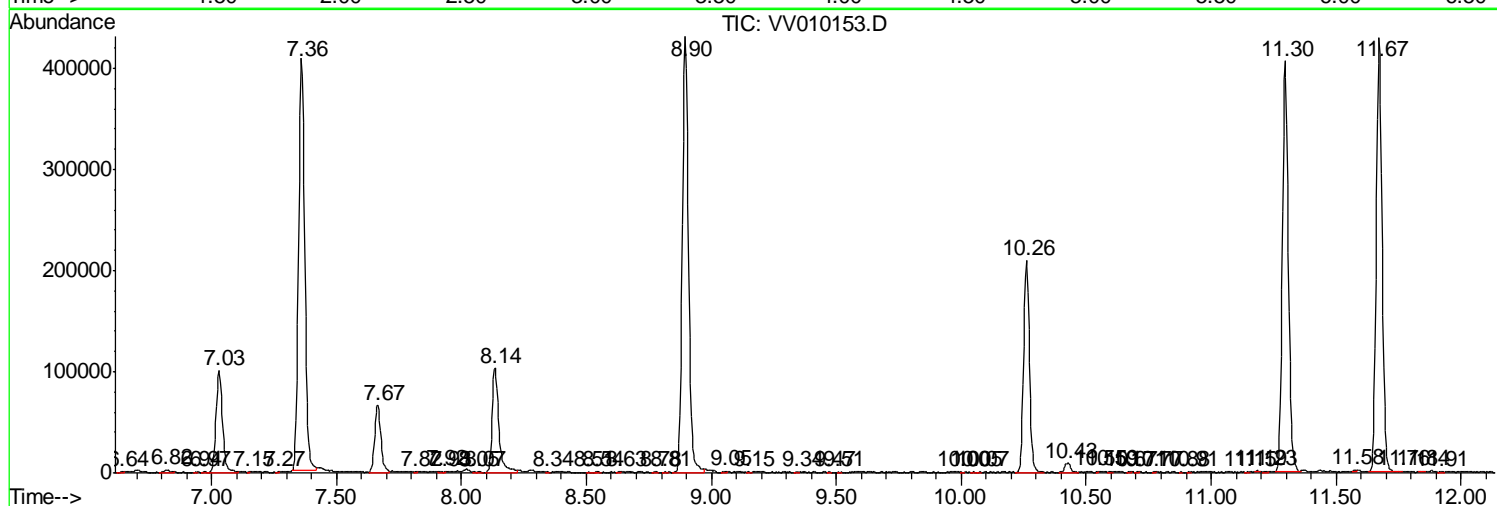
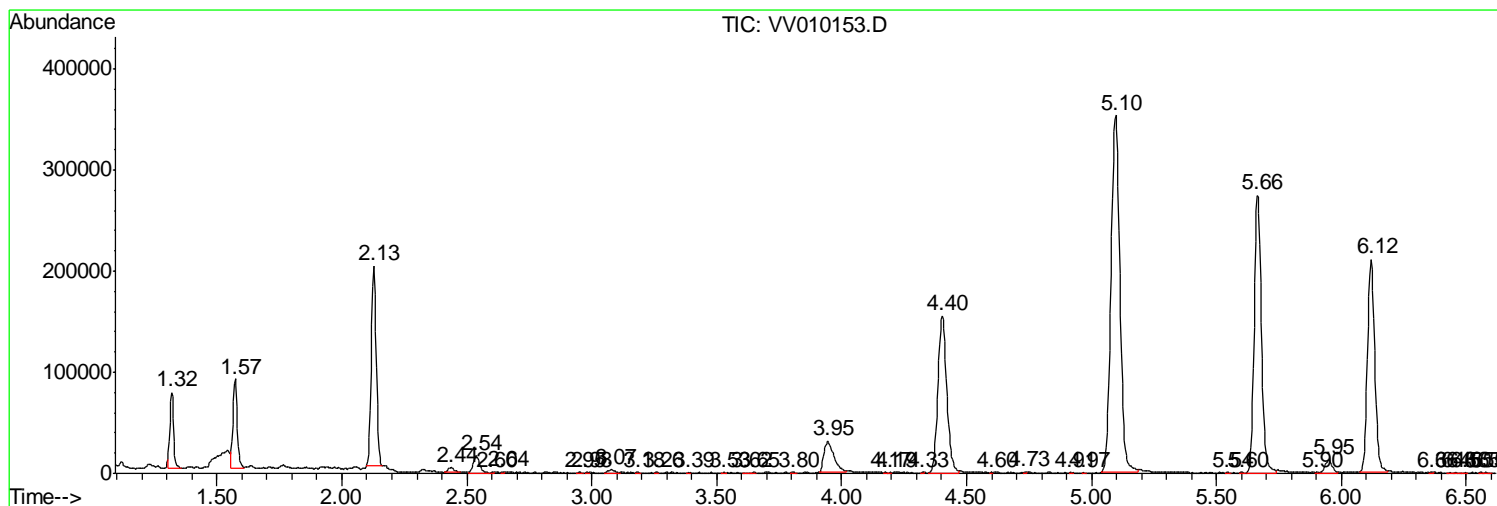
Sum of corrected areas: 6586729

Data Path : Z:\VOASRV\HPCHEM1\MSVOA V\DATA\VV040619\
 Data File : VV010153.D
 Acq On : 06 Apr 2019 15:09
 Operator : SY/MD
 Sample : K2259-19
 Misc : 5.00G/10mL/MSVOA V/SOIL
 ALS Vial : 1 Sample Multiplier: 1

Instrument :
 MSVOA_V
 ClientSampleId :
 ETJ36

Quant Method : Z:\VOASRV\HPCHEM1\MSVOA_V\METHOD\SOM2VLM040219S.M
 Quant Title : VOC Analysis

TIC Library : C:\DATABASE\NIST11.L
 TIC Integration Parameters: LSCINT.P



Data Path : Z:\VOASRV\HPCHEM1\MSVOA_V\DATA\VV040619\
Data File : VV010153.D
Acq On : 06 Apr 2019 15:09
Operator : SY/MD
Sample : K2259-19
Misc : 5.00G/10mL/MSVOA_V/SOIL
ALS Vial : 1 Sample Multiplier: 1

Instrument :
MSVOA_V
ClientSampled :
ETJ36

Quant Method : Z:\VOASRV\HPCHEM1\MSVOA_V\METHOD\SOM2VLM040219S.M
Quant Title : VOC Analysis

TIC Library : C:\DATABASE\NIST11.L
TIC Integration Parameters: LSCINT.P

No Library Search Compounds Detected

Data Path : Z:\VOASRV\HPCHEM1\MSVOA_V\DATA\VV040619\
Data File : VV010153.D
Acq On : 06 Apr 2019 15:09
Operator : SY/MD
Sample : K2259-19
Misc : 5.00G/10mL/MSVOA_V/SOIL
ALS Vial : 1 Sample Multiplier: 1

Instrument :
MSVOA_V
ClientSampleId :
ETJ36

Quant Method : Z:\VOASRV\HPCHEM1\MSVOA_V\METHOD\SOM2VLM040219S.M
Quant Title : VOC Analysis

TIC Library : C:\DATABASE\NIST11.L
TIC Integration Parameters: LSCINT.P

TIC Top Hit name	RT	EstConc	Units	Response	--Internal Standard--			
					#	RT	Resp	Conc
