

Data Path : Z:\voasrv\HPCHEM1\MSVOA_V\Data\VW040623\
 Data File : VW030412.D
 Acq On : 06 Apr 2023 12:58
 Operator : SY/MD
 Sample : 02194-09
 Misc : 25.0mL/MSVOA_V/WATER
 ALS Vial : 8 Sample Multiplier: 1

Instrument :
 MSVOA_V
 ClientSampleId :
 BHDW6

Quant Time: Apr 07 04:50:20 2023
 Quant Method : Z:\voasrv\HPCHEM1\MSVOA_V\Method\SFAMVTR032323WMA.M
 Quant Title : TRACE VOA SFAM1.0
 QLast Update : Fri Mar 31 05:37:21 2023
 Response via : Initial Calibration

Compound	R.T.	QIon	Response	Conc	Units	Dev(Min)

Internal Standards						
1) 1,4-Difluorobenzene	5.542	114	160248	5.000	ug/L	0.00
28) Chlorobenzene-d5	8.792	117	157786	5.000	ug/L	0.00
58) 1,4-Dichlorobenzene-d4	11.194	152	77092	5.000	ug/L	0.00
System Monitoring Compounds						
4) Vinyl Chloride-d3	1.281	65	23242	2.190	ug/L	0.00
Spiked Amount	5.000	Range 40 - 130	Recovery	=	43.800%	
7) Chloroethane-d5	1.536	69	27752	2.694	ug/L	0.00
Spiked Amount	5.000	Range 65 - 130	Recovery	=	53.800%#	
11) 1,1-Dichloroethene-d2	2.063	63	43718	1.736	ug/L	0.00
Spiked Amount	5.000	Range 60 - 125	Recovery	=	34.800%#	
20) 2-Butanone-d5	3.818	46	102341	37.307	ug/L	0.00
Spiked Amount	50.000	Range 40 - 130	Recovery	=	74.620%	
24) Chloroform-d	4.259	84	83800	3.262	ug/L	0.00
Spiked Amount	5.000	Range 70 - 125	Recovery	=	65.200%#	
26) 1,2-Dichloroethane-d4	4.953	65	42677	3.521	ug/L	0.00
Spiked Amount	5.000	Range 70 - 130	Recovery	=	70.400%	
32) Benzene-d6	4.966	84	135308	3.043	ug/L	0.00
Spiked Amount	5.000	Range 70 - 125	Recovery	=	60.800%#	
36) 1,2-Dichloropropane-d6	5.998	67	46413	3.334	ug/L	0.00
Spiked Amount	5.000	Range 60 - 140	Recovery	=	66.600%	
41) Toluene-d8	7.252	98	108756	2.664	ug/L	0.00
Spiked Amount	5.000	Range 70 - 130	Recovery	=	53.200%#	
43) trans-1,3-Dichloroprop...	7.561	79	15073	2.876	ug/L	0.00
Spiked Amount	5.000	Range 55 - 130	Recovery	=	57.600%	
46) 2-Hexanone-d5	8.034	63	71376	33.891	ug/L	0.00
Spiked Amount	50.000	Range 45 - 130	Recovery	=	67.780%	
56) 1,1,2,2-Tetrachloroeth...	10.159	84	35506	3.236	ug/L	0.00
Spiked Amount	5.000	Range 65 - 120	Recovery	=	64.800%#	
66) 1,2-Dichlorobenzene-d4	11.570	152	47985	3.483	ug/L	0.00
Spiked Amount	5.000	Range 80 - 120	Recovery	=	69.600%#	

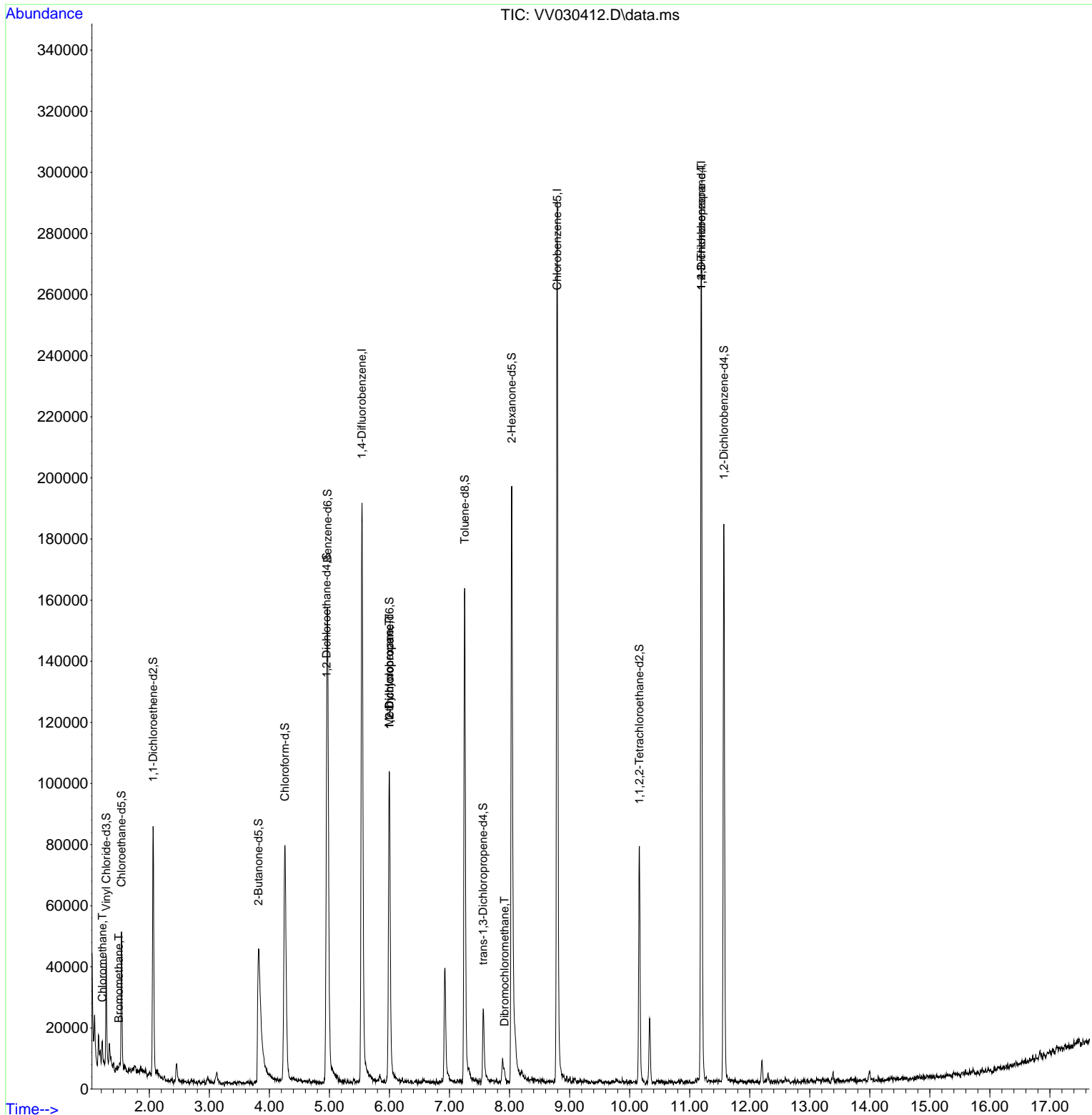
Target Compounds						Qvalue
3) Chloromethane	1.220	50	4305	0.167	ug/L	93
6) Bromomethane	1.494	94	795	0.149	ug/L	90
35) Methylcyclohexane	5.995	83	12085	0.509	ug/L #	18
37) 1,2-Dichloropropane	5.998	63	6423	0.446	ug/L #	86
49) Dibromochloromethane	7.915	129	946	0.078	ug/L #	12
61) 1,2,3-Trichloropropane	11.194	75	8498	1.233	ug/L #	68

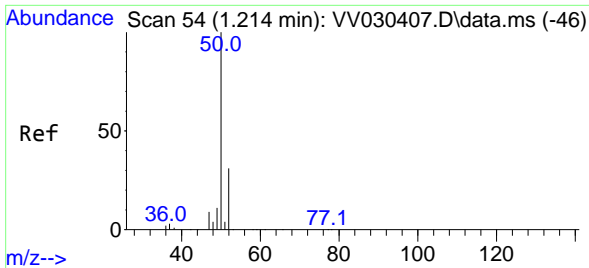
(#) = qualifier out of range (m) = manual integration (+) = signals summed

Data Path : Z:\voasrv\HPCHEM1\MSVOA_V\Data\VV040623\
 Data File : VV030412.D
 Acq On : 06 Apr 2023 12:58
 Operator : SY/MD
 Sample : 02194-09
 Misc : 25.0mL/MSVOA_V/WATER
 ALS Vial : 8 Sample Multiplier: 1

Instrument :
 MSVOA_V
 ClientSampleId :
 BHDW6

Quant Time: Apr 07 04:50:20 2023
 Quant Method : Z:\voasrv\HPCHEM1\MSVOA_V\Method\SFAMVTR032323WMA.M
 Quant Title : TRACE VOA SFAM1.0
 QLast Update : Fri Mar 31 05:37:21 2023
 Response via : Initial Calibration

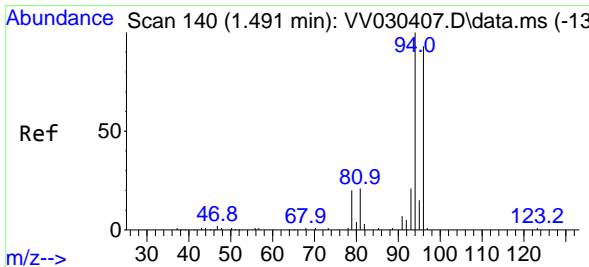
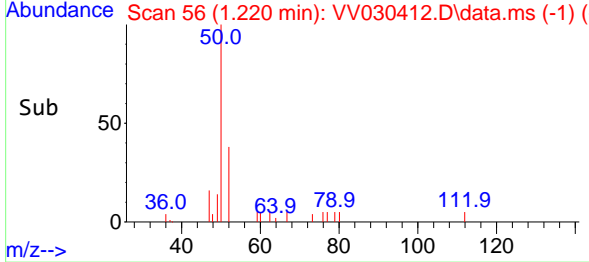
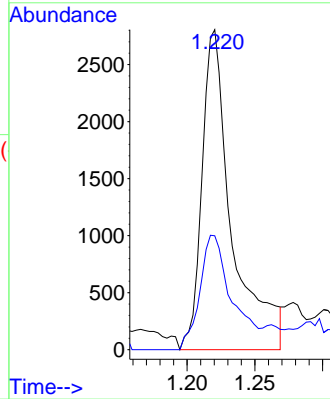
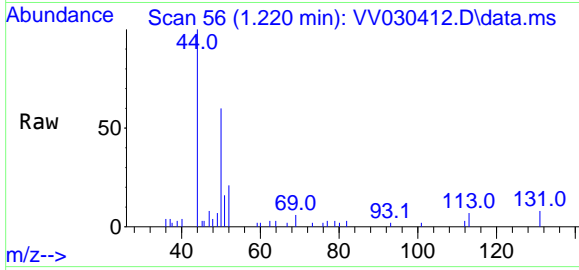




#3
 Chloromethane
 Concen: 0.167 ug/L
 RT: 1.220 min Scan# 50
 Delta R.T. 0.003 min
 Lab File: VV030412.D
 Acq: 06 Apr 2023 12:58

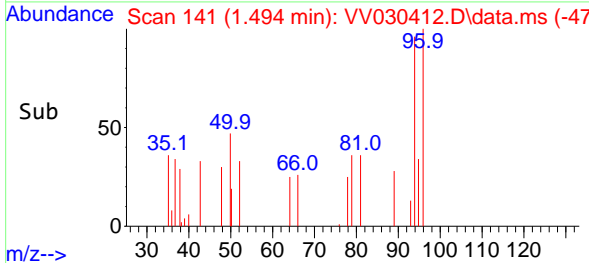
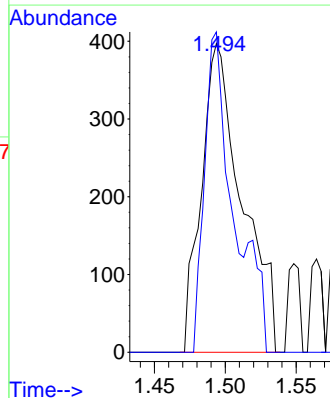
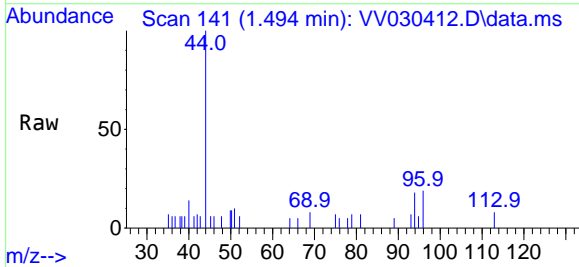
Instrument :
 MSVOA_V
 ClientSampleId :
 BHDW6

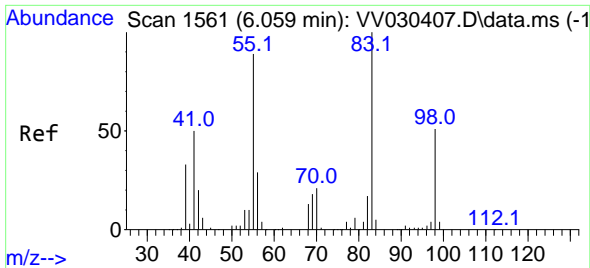
Tgt Ion: 50 Resp: 4305
 Ion Ratio Lower Upper
 50 100
 52 35.6 22.3 41.5



#6
 Bromomethane
 Concen: 0.149 ug/L
 RT: 1.494 min Scan# 141
 Delta R.T. 0.003 min
 Lab File: VV030412.D
 Acq: 06 Apr 2023 12:58

Tgt Ion: 94 Resp: 795
 Ion Ratio Lower Upper
 94 100
 96 103.8 66.1 122.7



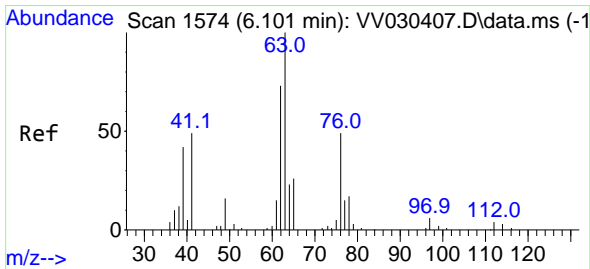
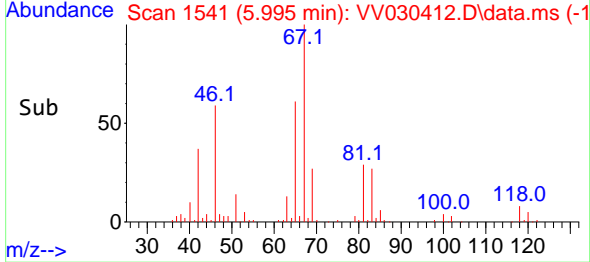
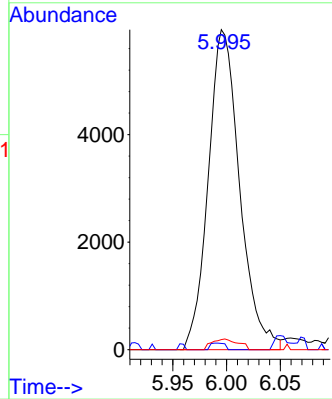
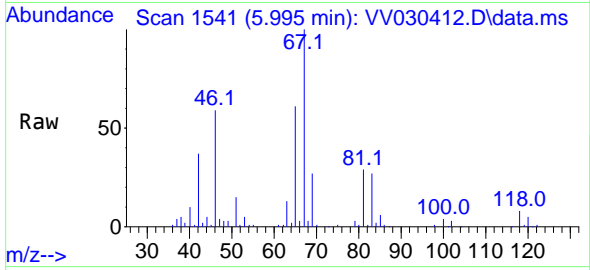


#35
 Methylcyclohexane
 Concen: 0.509 ug/L
 RT: 5.995 min Scan# 1541
 Delta R.T. -0.064 min
 Lab File: VV030412.D
 Acq: 06 Apr 2023 12:58

Instrument : MSVOA_V
 ClientSampleId : BHDW6

Tgt Ion: 83 Resp: 12085

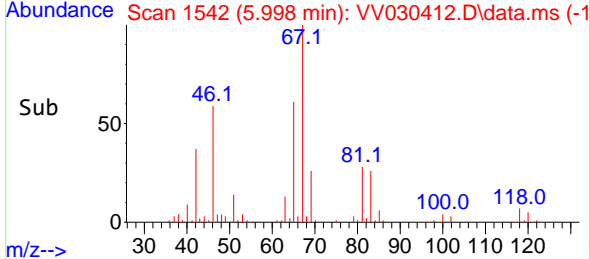
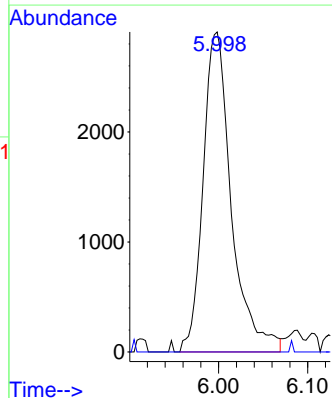
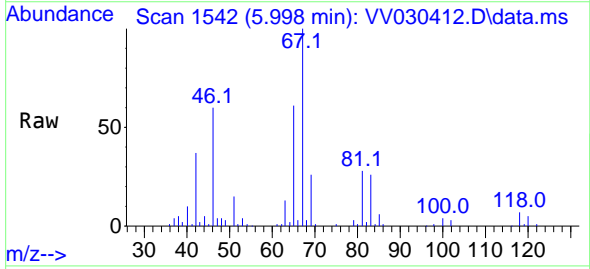
Ion	Ratio	Lower	Upper
83	100		
55	0.9	66.6	100.0#
98	2.8	38.6	58.0#

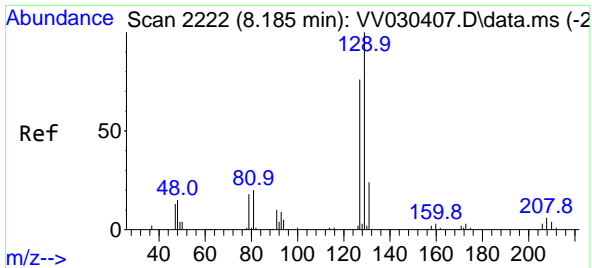


#37
 1,2-Dichloropropane
 Concen: 0.446 ug/L
 RT: 5.998 min Scan# 1542
 Delta R.T. -0.103 min
 Lab File: VV030412.D
 Acq: 06 Apr 2023 12:58

Tgt Ion: 63 Resp: 6423

Ion	Ratio	Lower	Upper
63	100		
112	0.3	3.9	5.9#

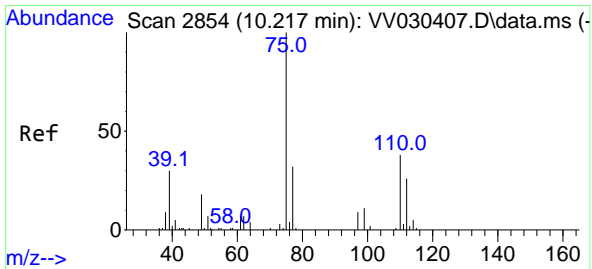
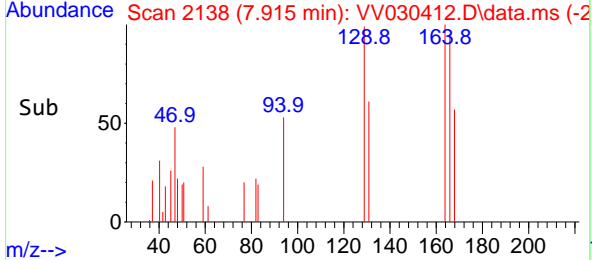
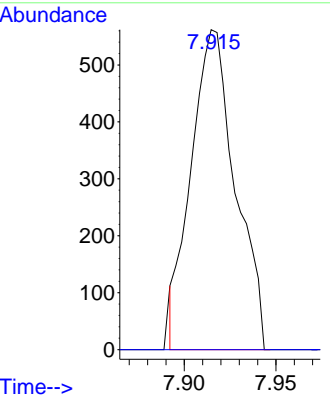
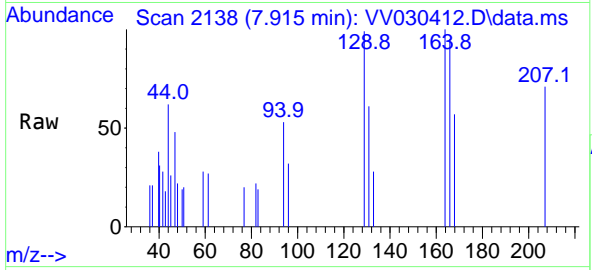




#49
 Dibromochloromethane
 Concen: 0.078 ug/L
 RT: 7.915 min Scan# 2138
 Delta R.T. -0.270 min
 Lab File: VV030412.D
 Acq: 06 Apr 2023 12:58

Instrument : MSVOA_V
 ClientSampleId : BHDW6

Tgt Ion:129 Resp: 946
 Ion Ratio Lower Upper
 129 100
 127 0.0 52.7 97.9#



#61
 1,2,3-Trichloropropane
 Concen: 1.233 ug/L
 RT: 11.194 min Scan# 3158
 Delta R.T. 0.977 min
 Lab File: VV030412.D
 Acq: 06 Apr 2023 12:58

Tgt Ion: 75 Resp: 8498
 Ion Ratio Lower Upper
 75 100
 77 33.4 26.0 39.0
 110 4.4 31.6 47.4#

