

Data Path : Z:\VOASRV\HPCHEM1\MSVOA V\DATA\VV040819\
 Data File : VV010194.D
 Acq On : 09 Apr 2019 00:36
 Operator : SY/MD
 Sample : K2254-06
 Misc : 4.44G/10mL/MSVOA V/SOIL
 ALS Vial : 1 Sample Multiplier: 1

Instrument :
 MSVOA_V
Client Sampled :
 BFC27

Manual Integrations
APPROVED
 MMDadoda
 4/15/2019 12:28:32 AM

Quant Time: Apr 09 08:02:04 2019
 Quant Method : Z:\VOASRV\HPCHEM1\MSVOA_V\METHOD\SOM2VLM040219S.M
 Quant Title : VOC Analysis
 QLast Update : Tue Apr 09 07:35:38 2019
 Response via : Initial Calibration

| Internal Standards | R.T. | QIon | Response | Conc | Units | Dev(Min) |
|----------------------------|-------|------|----------|-------|-------|----------|
| 1) 1,4-Difluorobenzene | 5.66 | 114 | 201054 | 25.00 | ug/L | 0.00 |
| 28) Chlorobenzene-d5 | 8.89 | 117 | 192020 | 25.00 | ug/L | 0.00 |
| 60) 1,4-Dichlorobenzene-d4 | 11.30 | 152 | 71909 | 25.00 | ug/L | 0.00 |

System Monitoring Compounds

| | | | | | | |
|--------------------------------|--------|-------|----------|----------|------|----------|
| 4) Vinyl Chloride-d3 | 1.31 | 65 | 41766 | 15.52 | ug/L | 0.00 |
| Spiked Amount | 25.000 | Range | 30 - 150 | Recovery | = | 62.08% |
| 7) Chloroethane-d5 | 1.56 | 69 | 66801 | 19.98 | ug/L | 0.00 |
| Spiked Amount | 25.000 | Range | 30 - 150 | Recovery | = | 79.92% |
| 10) 1,1-Dichloroethene-d2 | 2.12 | 63 | 62758 | 9.24 | ug/L | 0.00 |
| Spiked Amount | 25.000 | Range | 45 - 110 | Recovery | = | 36.96%# |
| 20) 2-Butanone-d5 | 3.94 | 46 | 51762 | 67.58 | ug/L | 0.00 |
| Spiked Amount | 50.000 | Range | 20 - 135 | Recovery | = | 135.16%# |
| 24) Chloroform-d | 4.39 | 84 | 110595 | 21.83 | ug/L | 0.00 |
| Spiked Amount | 25.000 | Range | 40 - 150 | Recovery | = | 87.32% |
| 26) 1,2-Dichloroethane-d4 | 5.08 | 65 | 79028 | 27.89 | ug/L | 0.00 |
| Spiked Amount | 25.000 | Range | 70 - 130 | Recovery | = | 111.56% |
| 29) Benzene-d6 | 5.09 | 84 | 216968 | 21.79 | ug/L | 0.00 |
| Spiked Amount | 25.000 | Range | 20 - 135 | Recovery | = | 87.16% |
| 33) 1,2-Dichloropropane-d6 | 6.11 | 67 | 73158 | 24.89 | ug/L | 0.00 |
| Spiked Amount | 25.000 | Range | 70 - 120 | Recovery | = | 99.56% |
| 37) Toluene-d8 | 7.36 | 98 | 194522 | 20.27 | ug/L | 0.00 |
| Spiked Amount | 25.000 | Range | 30 - 130 | Recovery | = | 81.08% |
| 38) trans-1,3-Dichloropropene- | 7.66 | 79 | 24338 | 19.37 | ug/L | 0.00 |
| Spiked Amount | 25.000 | Range | 30 - 135 | Recovery | = | 77.48% |
| 39) 2-Hexanone-d5 | 8.13 | 63 | 33994 | 57.68 | ug/L | 0.00 |
| Spiked Amount | 50.000 | Range | 20 - 135 | Recovery | = | 115.36% |
| 48) 1,1,2,2-Tetrachloroethane- | 10.26 | 84 | 78975 | 27.25 | ug/L | 0.00 |
| Spiked Amount | 25.000 | Range | 45 - 120 | Recovery | = | 109.00% |
| 61) 1,2-Dichlorobenzene-d4 | 11.67 | 152 | 68777 | 24.55 | ug/L | 0.00 |
| Spiked Amount | 25.000 | Range | 75 - 120 | Recovery | = | 98.20% |

Target Compounds

| Target Compounds | R.T. | QIon | Response | Conc | Units | Ovalue |
|------------------------|------|------|----------|--------|-------|--------|
| 13) Acetone | 2.19 | 43 | 27877 | 36.814 | ug/L | 100 |
| 14) Carbon disulfide | 2.31 | 76 | 20872 | 3.659 | ug/L | 99 |
| 16) Methylene chloride | 2.53 | 84 | 14952 | 4.233 | ug/L | 97 |
| 21) 2-Butanone | 4.02 | 43 | 5038m | 6.075 | ug/L | |

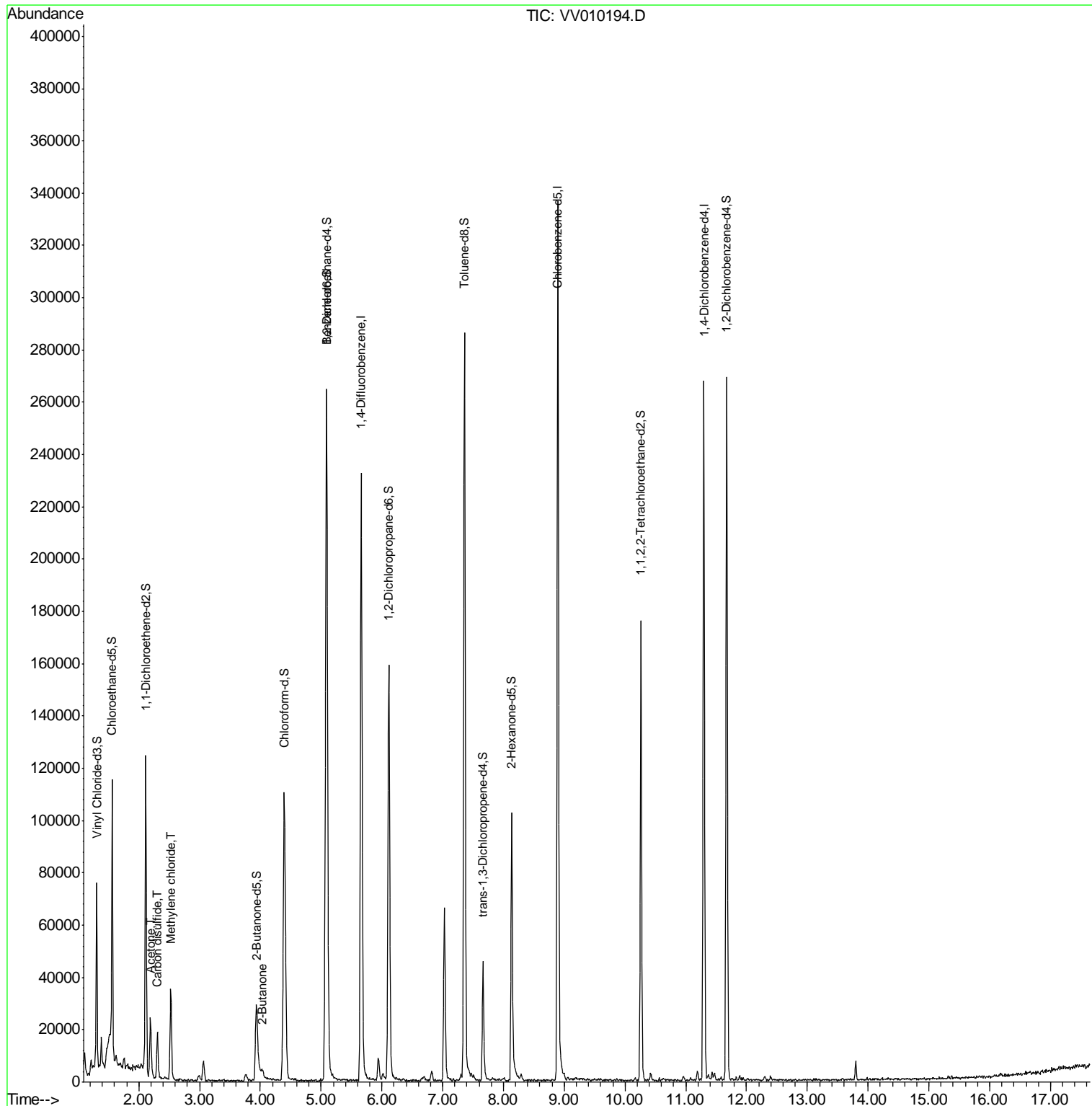
(#) = qualifier out of range (m) = manual integration (+) = signals summed

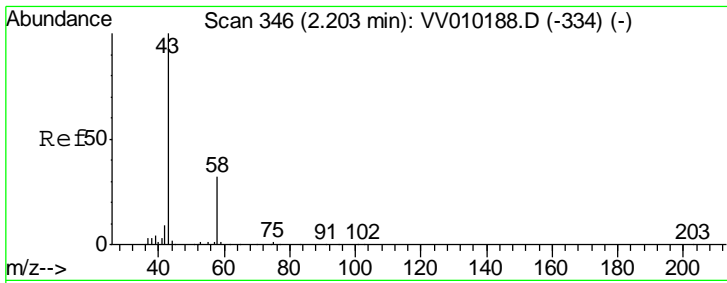
Data Path : Z:\VOASRV\HPCHEM1\MSVOA V\DATA\VV040819\
 Data File : VV010194.D
 Acq On : 09 Apr 2019 00:36
 Operator : SY/MD
 Sample : K2254-06
 Misc : 4.44G/10mL/MSVOA V/SOIL
 ALS Vial : 1 Sample Multiplier: 1

Instrument :
 MSVOA_V
 Client Sampled :
 BFC27

Manual Integrations
APPROVED
 MMDadoda
 4/15/2019 12:28:32 AM

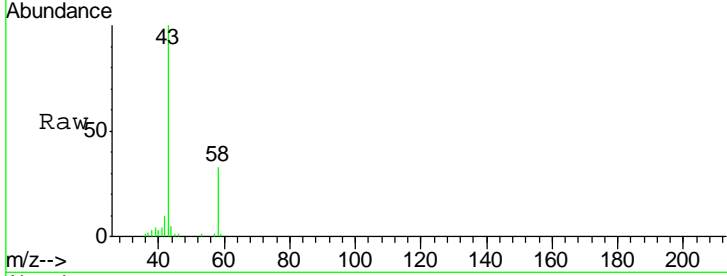
Quant Time: Apr 09 08:02:04 2019
 Quant Method : Z:\VOASRV\HPCHEM1\MSVOA_V\METHOD\SOM2VLM040219S.M
 Quant Title : VOC Analysis
 QLast Update : Tue Apr 09 07:35:38 2019
 Response via : Initial Calibration





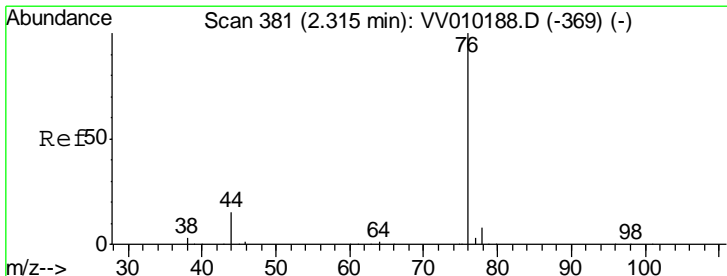
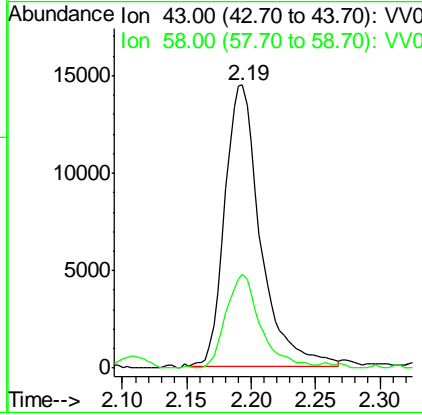
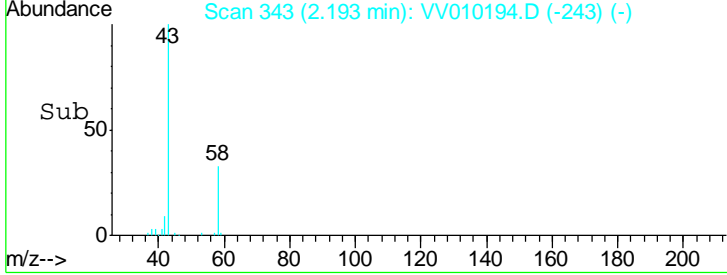
#13
 Acetone
 Concen: 36.814 ug/L
 RT: 2.19 min Scan# 343
 Delta R.T. -0.01 min
 Lab File: VV010194.D
 Acq: 09 Apr 2019 00:36

Instrument :
 MSVOA_V
ClientSampled :
 BFC27

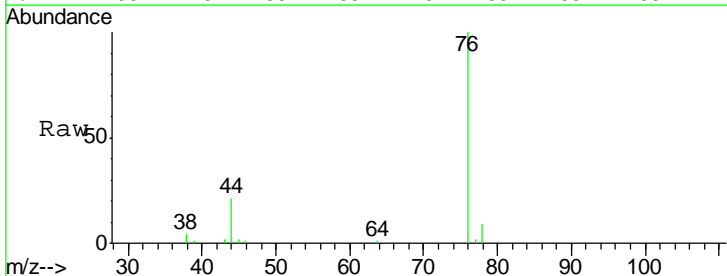


Tgt Ion: 43 Resp: 27877
 Ion Ratio Lower Upper
 43 100
 58 32.1 0.0 64.6

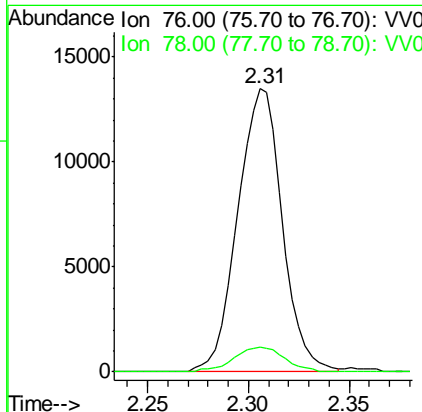
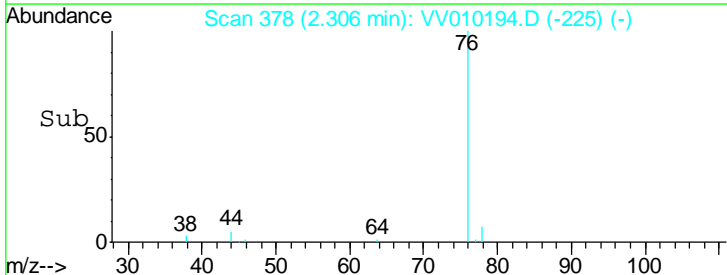
Manual Integrations
APPROVED
 MMDadoda
 4/15/2019 12:28:32 AM

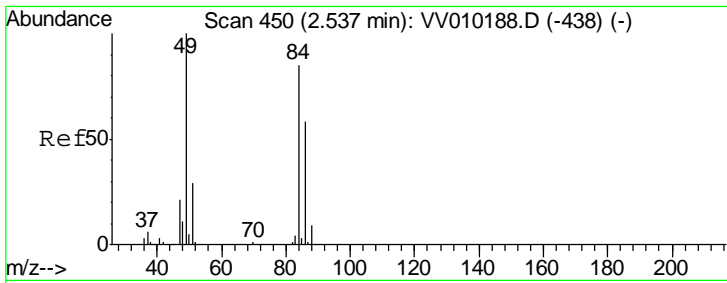


#14
 Carbon disulfide
 Concen: 3.659 ug/L
 RT: 2.31 min Scan# 378
 Delta R.T. -0.01 min
 Lab File: VV010194.D
 Acq: 09 Apr 2019 00:36



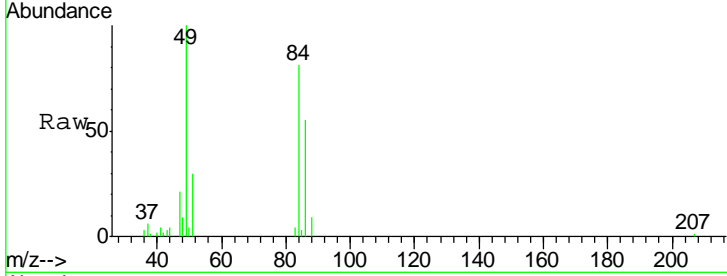
Tgt Ion: 76 Resp: 20872
 Ion Ratio Lower Upper
 76 100
 78 8.6 7.1 10.7





#16
 Methylene chloride
 Concen: 4.233 ug/L
 RT: 2.53 min Scan# 447
 Delta R.T. -0.01 min
 Lab File: VV010194.D
 Acq: 09 Apr 2019 00:36

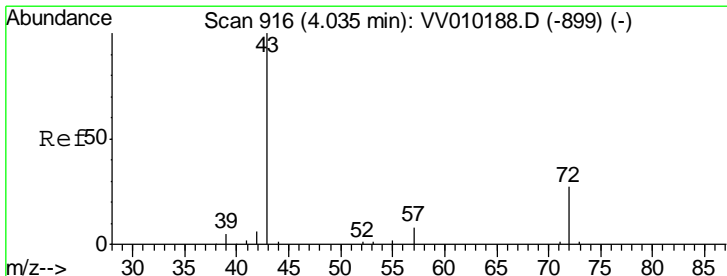
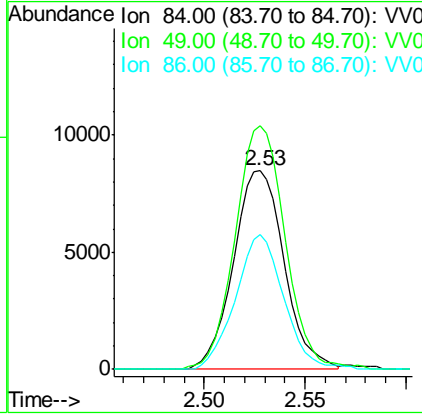
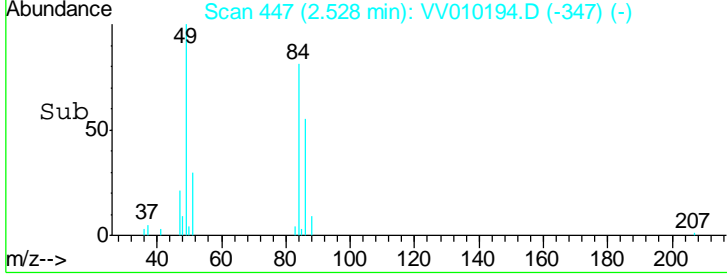
Instrument :
 MSVOA_V
ClientSampled :
 BFC27



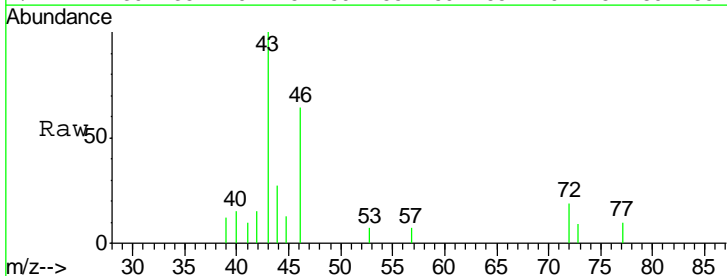
Tgt Ion: 84 Resp: 14952

| Ion | Ratio | Lower | Upper |
|-----|-------|-------|-------|
| 84 | 100 | | |
| 49 | 122.7 | 84.3 | 156.5 |
| 86 | 67.8 | 45.4 | 84.2 |

Manual Integrations
APPROVED
 MMDadoda
 4/15/2019 12:28:32 AM



#21
 2-Butanone
 Concen: 6.075 ug/L m
 RT: 4.02 min Scan# 912
 Delta R.T. -0.01 min
 Lab File: VV010194.D
 Acq: 09 Apr 2019 00:36



Tgt Ion: 43 Resp: 5038

| Ion | Ratio | Lower | Upper |
|-----|-------|-------|-------|
| 43 | 100 | | |
| 72 | 1.7 | 12.8 | 38.4# |

