

Data Path : Z:\VOASRV\HPCHEM1\MSVOA V\DATA\VV040819\
 Data File : VV010179.D
 Acq On : 08 Apr 2019 16:41
 Operator : SY/MD
 Sample : K2218-10
 Misc : 4.99G/10mL/MSVOA V/SOIL
 ALS Vial : 1 Sample Multiplier: 1

Instrument :
 MSVOA_V
 ClientSampled :

Integration Parameters: LSCINT.P

Integrator: RTE
 Smoothing : OFF
 Sampling : 1
 Start Thrs: 0.2
 Stop Thrs : 0

Filtering: 5
 Min Area: 0 % of largest Peak
 Max Peaks: 100
 Peak Location: TOP

If leading or trailing edge < 100 prefer < Baseline drop else tangent >
 Peak separation: 5

Method : Z:\VOASRV\HPCHEM1\MSVOA_V\METHOD\SOM2VLM040219S.M
 Title : VOC Analysis

Signal : TIC

peak #	R.T. min	first scan	max scan	last scan	PK TY	peak height	corr. area	corr. % max.	% of total
1	2.235	354	356	358	rBV2	873	480	0.40%	0.051%
2	2.267	362	366	367	rBV	755	522	0.43%	0.055%
3	2.376	398	400	404	rVB3	721	408	0.34%	0.043%
4	2.415	409	412	413	rBV2	585	281	0.23%	0.030%
5	2.537	441	450	461	rVB	17977	29358	24.38%	3.105%
6	2.721	505	507	509	rBV2	445	217	0.18%	0.023%
7	2.775	522	524	527	rVB2	450	269	0.22%	0.028%
8	2.949	575	578	583	rBV4	495	446	0.37%	0.047%
9	2.978	585	587	593	rBV2	333	287	0.24%	0.030%
10	3.003	593	595	600	rVB	405	266	0.22%	0.028%
11	3.074	606	617	629	rBV5	3291	7245	6.02%	0.766%
12	3.148	635	640	642	rBV2	628	490	0.41%	0.052%
13	3.463	735	738	741	rBV3	539	303	0.25%	0.032%
14	3.576	771	773	778	rBV2	586	343	0.28%	0.036%
15	3.740	822	824	829	rVB2	540	266	0.22%	0.028%
16	3.769	829	833	837	rBV2	427	386	0.32%	0.041%
17	3.804	840	844	848	rVB4	349	289	0.24%	0.031%
18	3.830	848	852	855	rBV2	501	380	0.32%	0.040%
19	3.868	860	864	867	rVB3	576	419	0.35%	0.044%
20	3.884	867	869	873	rVB3	369	292	0.24%	0.031%
21	3.946	873	888	907	rBV2	13076	34553	28.69%	3.654%
22	4.335	1005	1009	1013	rVB3	483	394	0.33%	0.042%
23	4.402	1015	1030	1045	rBV4	19500	47434	39.38%	5.016%
24	4.486	1052	1056	1057	rBV2	582	384	0.32%	0.041%
25	4.618	1096	1097	1101	rBV2	376	214	0.18%	0.023%
26	4.946	1196	1199	1203	rVB2	526	299	0.25%	0.032%
27	4.974	1205	1208	1211	rBV2	331	206	0.17%	0.022%
28	5.090	1231	1244	1268	rVV5	45612	120437	100.00%	12.737%
29	5.264	1295	1298	1300	rBV	432	241	0.20%	0.025%
30	5.347	1321	1324	1326	rVB2	814	326	0.27%	0.034%
31	5.405	1337	1342	1343	rBV	523	342	0.28%	0.036%
32	5.444	1351	1354	1356	rBV2	392	211	0.18%	0.022%
33	5.454	1356	1357	1362	rVB	409	264	0.22%	0.028%
34	5.666	1408	1423	1441	rBV2	29871	60235	50.01%	6.370%

Data Path : Z:\VOASRV\HPCHEM1\MSVOA V\DATA\VV040819\
 Data File : VV010179.D
 Acq On : 08 Apr 2019 16:41
 Operator : SY/MD
 Sample : K2218-10
 Misc : 4.99G/10mL/MSVOA V/SOIL
 ALS Vial : 1 Sample Multiplier: 1

Instrument :
 MSVOA_V
 ClientSampleId :

Integration Parameters: LSCINT.P

Integrator: RTE
 Smoothing : OFF
 Sampling : 1
 Start Thrs: 0.2
 Stop Thrs : 0

Filtering: 5
 Min Area: 0 % of largest Peak
 Max Peaks: 100
 Peak Location: TOP

If leading or trailing edge < 100 prefer < Baseline drop else tangent >
 Peak separation: 5

Method : Z:\VOASRV\HPCHEM1\MSVOA_V\METHOD\SOM2VLM040219S.M
 Title : VOC Analysis

35	5.769	1452	1455	1457	rBV2	418	233	0.19%	0.025%
36	5.891	1490	1493	1499	rBV2	425	436	0.36%	0.046%
37	6.029	1532	1536	1538	rBV3	671	512	0.43%	0.054%
38	6.119	1551	1564	1579	rBV4	34173	69945	58.08%	7.397%
39	6.187	1584	1585	1593	rVB3	682	602	0.50%	0.064%
40	6.296	1617	1619	1624	rVB2	346	273	0.23%	0.029%
41	6.354	1634	1637	1643	rVB3	442	372	0.31%	0.039%
42	6.453	1665	1668	1673	rVB4	505	360	0.30%	0.038%
43	6.476	1673	1675	1681	rVB2	329	263	0.22%	0.028%
44	6.611	1713	1717	1719	rBV4	317	261	0.22%	0.028%
45	6.942	1815	1820	1823	rBV3	545	446	0.37%	0.047%
46	6.978	1829	1831	1834	rBV2	414	218	0.18%	0.023%
47	7.032	1838	1848	1859	rBV2	10656	19743	16.39%	2.088%
48	7.170	1889	1891	1896	rVV3	337	327	0.27%	0.035%
49	7.277	1922	1924	1927	rVB2	450	237	0.20%	0.025%
50	7.302	1929	1932	1937	rBV3	769	379	0.31%	0.040%
51	7.360	1940	1950	1963	rBV	32807	55498	46.08%	5.869%
52	7.518	1997	1999	2002	rVB	581	221	0.18%	0.023%
53	7.666	2035	2045	2053	rBV2	11087	17811	14.79%	1.884%
54	7.775	2077	2079	2082	rVB2	515	291	0.24%	0.031%
55	7.797	2082	2086	2088	rBV	356	289	0.24%	0.031%
56	8.074	2169	2172	2174	rBV	307	225	0.19%	0.024%
57	8.135	2180	2191	2208	rBV	34542	63677	52.87%	6.734%
58	8.370	2258	2264	2265	rBV2	549	490	0.41%	0.052%
59	8.495	2297	2303	2310	rBV6	1998	3033	2.52%	0.321%
60	8.611	2334	2339	2341	rBV	375	345	0.29%	0.036%
61	8.733	2372	2377	2380	rBV2	502	430	0.36%	0.045%
62	8.842	2407	2411	2415	rVB4	739	623	0.52%	0.066%
63	8.897	2417	2428	2444	rBV3	55860	99015	82.21%	10.471%
64	9.071	2480	2482	2487	rVB3	779	486	0.40%	0.051%
65	9.096	2487	2490	2492	rBV2	594	484	0.40%	0.051%
66	9.122	2496	2498	2501	rBV2	402	254	0.21%	0.027%
67	9.219	2526	2528	2532	rBV2	395	286	0.24%	0.030%
68	9.315	2555	2558	2560	rBV	346	247	0.21%	0.026%
69	9.473	2604	2607	2611	rVB2	731	538	0.45%	0.057%
70	9.559	2632	2634	2638	rBV2	421	244	0.20%	0.026%
71	9.797	2703	2708	2711	rBV3	645	674	0.56%	0.071%

Data Path : Z:\VOASRV\HPCHEM1\MSVOA V\DATA\VV040819\
 Data File : VV010179.D
 Acq On : 08 Apr 2019 16:41
 Operator : SY/MD
 Sample : K2218-10
 Misc : 4.99G/10mL/MSVOA V/SOIL
 ALS Vial : 1 Sample Multiplier: 1

Instrument :
 MSVOA_V
 ClientSampleId :

Integration Parameters: LSCINT.P

Integrator: RTE
 Smoothing : OFF
 Sampling : 1
 Start Thrs: 0.2
 Stop Thrs : 0

Filtering: 5
 Min Area: 0 % of largest Peak
 Max Peaks: 100
 Peak Location: TOP

If leading or trailing edge < 100 prefer < Baseline drop else tangent >
 Peak separation: 5

Method : Z:\VOASRV\HPCHEM1\MSVOA_V\METHOD\SOM2VLM040219S.M
 Title : VOC Analysis

72	10.067	2789	2792	2793	rBV	493	249	0.21%	0.026%
73	10.116	2804	2807	2809	rBV	656	308	0.26%	0.033%
74	10.141	2813	2815	2819	rVV	341	205	0.17%	0.022%
75	10.183	2824	2828	2833	rBV4	439	481	0.40%	0.051%
76	10.264	2840	2853	2867	rBV2	71042	117879	97.88%	12.466%
77	10.576	2948	2950	2956	rVB2	929	601	0.50%	0.064%
78	10.611	2956	2961	2964	rBV3	655	571	0.47%	0.060%
79	10.627	2964	2966	2971	rVB2	469	392	0.33%	0.041%
80	10.778	3011	3013	3016	rBV2	296	211	0.18%	0.022%
81	10.923	3054	3058	3059	rBV2	425	250	0.21%	0.026%
82	11.122	3116	3120	3123	rBV	540	379	0.31%	0.040%
83	11.299	3164	3175	3189	rBV3	44305	81288	67.49%	8.597%
84	11.373	3194	3198	3201	rVB3	539	318	0.26%	0.034%
85	11.402	3204	3207	3208	rBV3	621	260	0.22%	0.027%
86	11.444	3218	3220	3226	rVB2	638	470	0.39%	0.050%
87	11.524	3241	3245	3247	rBV	456	268	0.22%	0.028%
88	11.675	3282	3292	3310	rVB2	49327	86327	71.68%	9.130%
89	11.913	3362	3366	3368	rBV2	575	342	0.28%	0.036%
90	11.974	3382	3385	3389	rBV3	689	545	0.45%	0.058%
91	12.170	3443	3446	3450	rBV3	568	406	0.34%	0.043%
92	12.421	3522	3524	3526	rBV2	476	228	0.19%	0.024%
93	12.469	3537	3539	3543	rVB3	647	370	0.31%	0.039%
94	12.772	3628	3633	3635	rBV2	523	419	0.35%	0.044%
95	12.971	3693	3695	3697	rBV2	599	210	0.17%	0.022%
96	13.116	3737	3740	3742	rVB2	466	237	0.20%	0.025%
97	13.794	3945	3951	3958	rBV6	2361	2822	2.34%	0.298%
98	13.894	3978	3982	3983	rBV2	628	443	0.37%	0.047%
99	14.029	4022	4024	4027	rBV	594	313	0.26%	0.033%
100	14.154	4061	4063	4067	rBV3	632	520	0.43%	0.055%

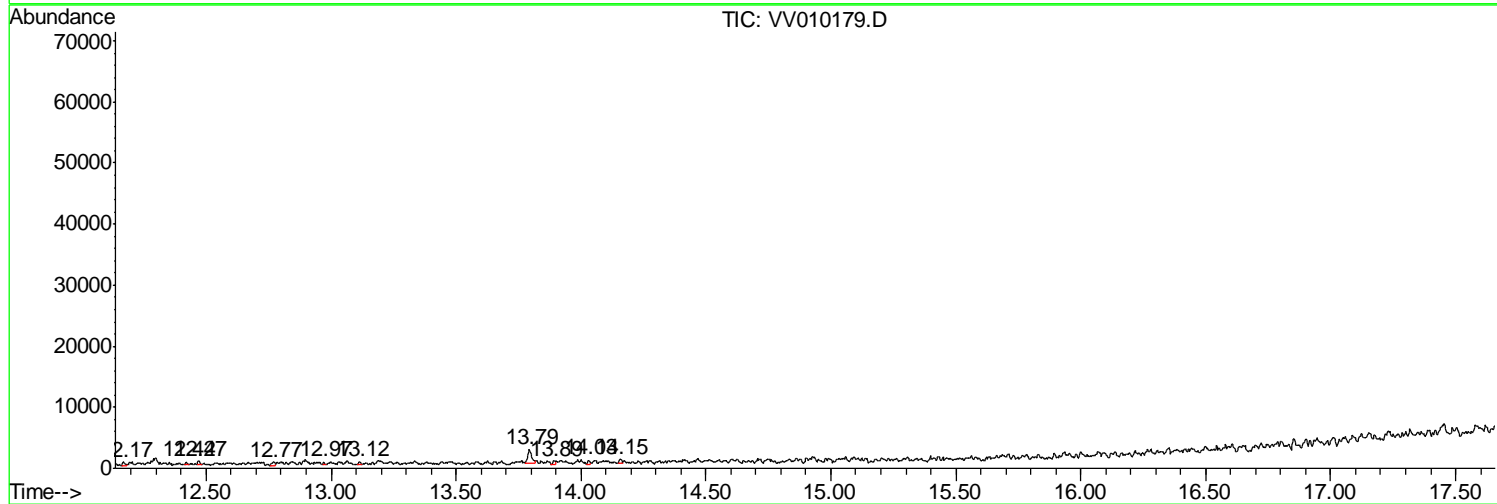
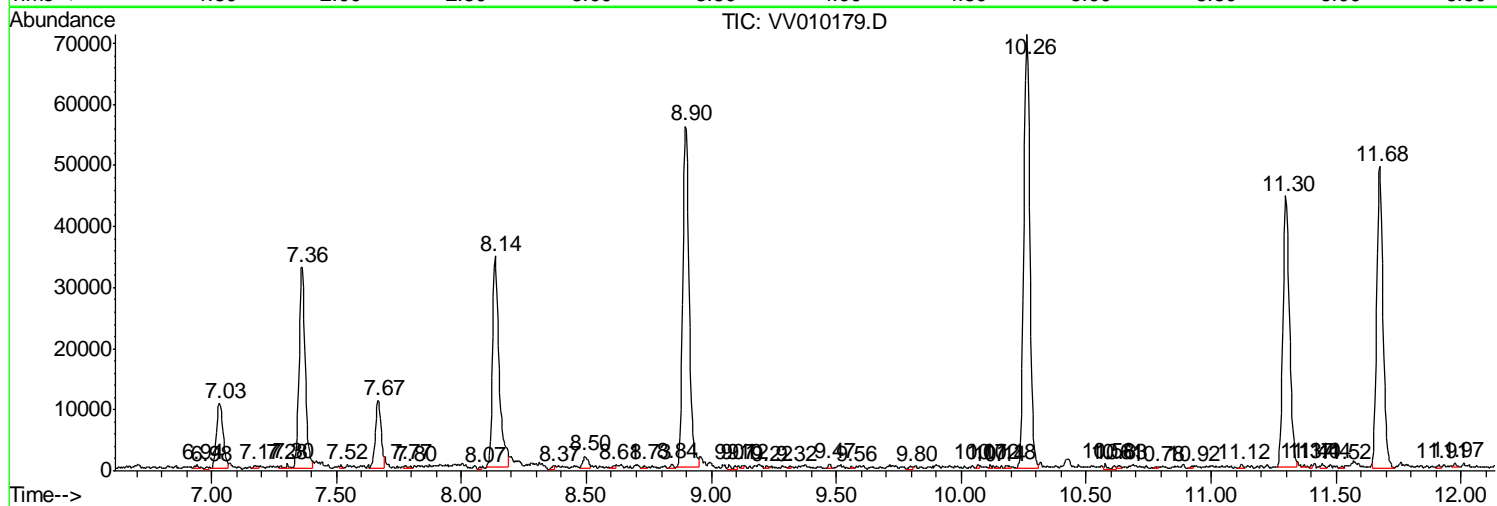
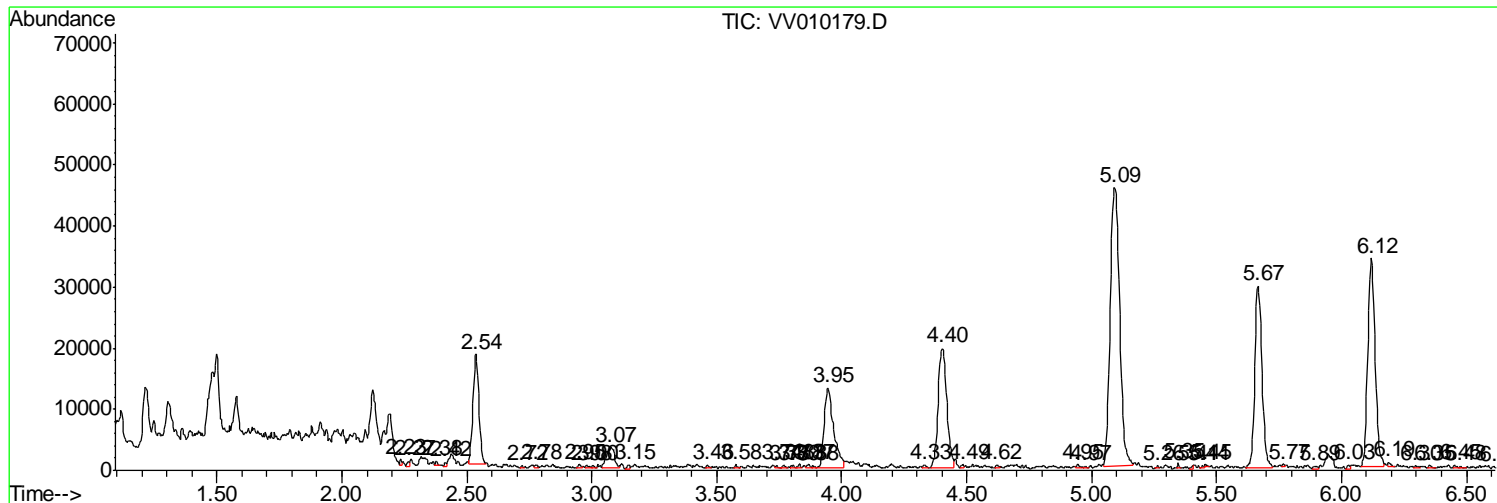
Sum of corrected areas: 945567

Data Path : Z:\VOASRV\HPCHEM1\MSVOA V\DATA\VV040819\
 Data File : VV010179.D
 Acq On : 08 Apr 2019 16:41
 Operator : SY/MD
 Sample : K2218-10
 Misc : 4.99G/10mL/MSVOA V/SOIL
 ALS Vial : 1 Sample Multiplier: 1

Instrument :
 MSVOA_V
 ClientSampled :

Quant Method : Z:\VOASRV\HPCHEM1\MSVOA_V\METHOD\SOM2VLM040219S.M
 Quant Title : VOC Analysis

TIC Library : C:\DATABASE\NIST11.L
 TIC Integration Parameters: LSCINT.P



Data Path : Z:\VOASRV\HPCHEM1\MSVOA V\DATA\VV040819\
 Data File : VV010179.D
 Acq On : 08 Apr 2019 16:41
 Operator : SY/MD
 Sample : K2218-10
 Misc : 4.99G/10mL/MSVOA V/SOIL
 ALS Vial : 1 Sample Multiplier: 1

Instrument :
 MSVOA_V
 ClientSampled :

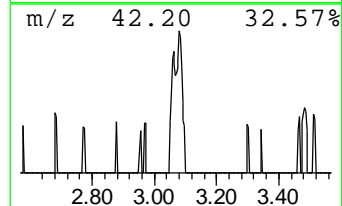
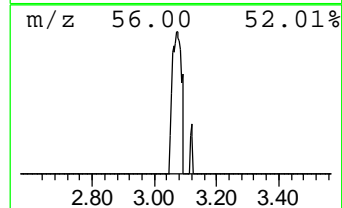
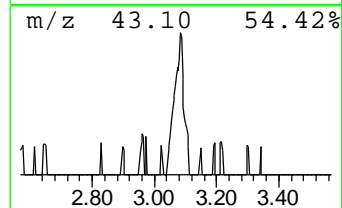
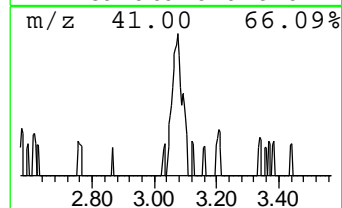
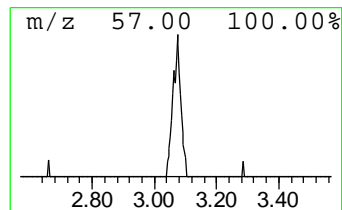
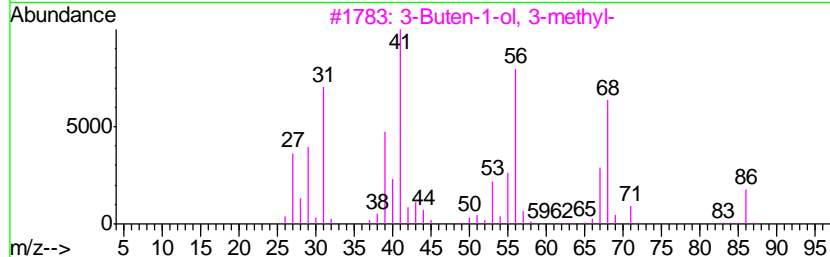
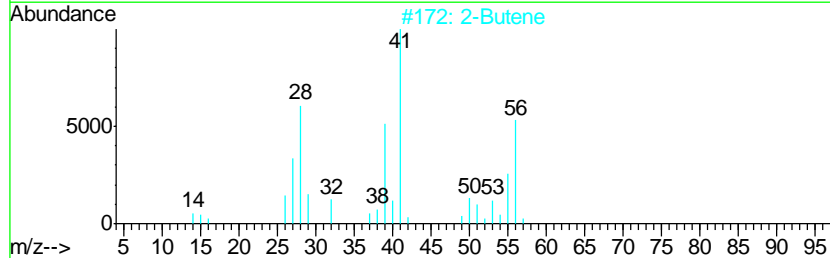
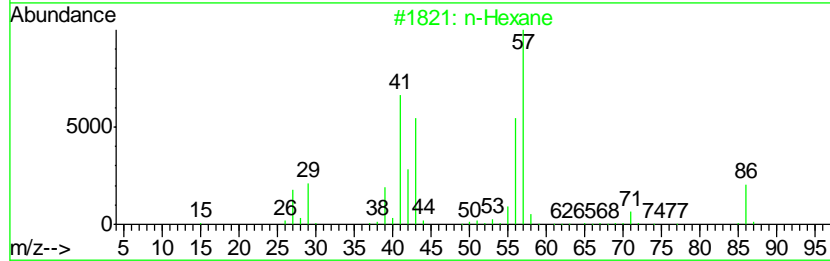
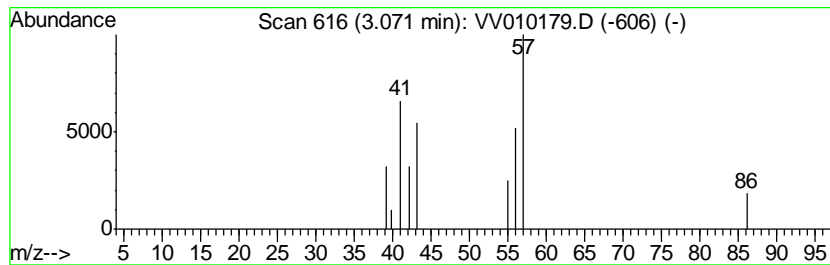
Quant Method : Z:\VOASRV\HPCHEM1\MSVOA_V\METHOD\SOM2VLM040219S.M
 Quant Title : VOC Analysis

TIC Library : C:\DATABASE\NIST11.L
 TIC Integration Parameters: LSCINT.P

 Peak Number 1 (DEL) Alkane: Straight-Chai... Concentration Rank 2

R.T.	EstConc	Area	Relative to ISTD	R.T.
3.07	3.01 ug/L	7245	1,4-Difluorobenzene	5.67

Hit#	of	Tentative ID	MW	MolForm	CAS#	Qual
1	5	n-Hexane	86	C6H14	000110-54-3	86
2		2-Butene	56	C4H8	000107-01-7	38
3		3-Buten-1-ol, 3-methyl-	86	C5H10O	000763-32-6	37
4		1-Propene, 2-methyl-	56	C4H8	000115-11-7	9
5		n-Hexane	86	C6H14	000110-54-3	9



Data Path : Z:\VOASRV\HPCHEM1\MSVOA_V\DATA\VV040819\
Data File : VV010179.D
Acq On : 08 Apr 2019 16:41
Operator : SY/MD
Sample : K2218-10
Misc : 4.99G/10mL/MSVOA_V/SOIL
ALS Vial : 1 Sample Multiplier: 1

Instrument :
MSVOA_V
ClientSampleId :

Quant Method : Z:\VOASRV\HPCHEM1\MSVOA_V\METHOD\SOM2VLM040219S.M
Quant Title : VOC Analysis

TIC Library : C:\DATABASE\NIST11.L
TIC Integration Parameters: LSCINT.P

TIC Top Hit name	RT	EstConc	Units	Response	--Internal Standard--			
					#	RT	Resp	Conc
(DEL) Alkane: Str...	3.07	3.0	ug/L	7245	1	5.67	60235	25.0