

Data Path : Z:\VOASRV\HPCHEM1\MSVOA V\DATA\VV040819\
 Data File : VV010197.D
 Acq On : 09 Apr 2019 01:56
 Operator : SY/MD
 Sample : K2254-11
 Misc : 5.11G/10mL/MSVOA V/SOIL
 ALS Vial : 1 Sample Multiplier: 1

Instrument :
 MSVOA_V
 ClientSampleId :
 BFC31

Integration Parameters: LSCINT.P

Integrator: RTE
 Smoothing : OFF
 Sampling : 1
 Start Thrs: 0.2
 Stop Thrs : 0

Filtering: 5
 Min Area: 0 % of largest Peak
 Max Peaks: 100
 Peak Location: TOP

If leading or trailing edge < 100 prefer < Baseline drop else tangent >
 Peak separation: 5

Method : Z:\VOASRV\HPCHEM1\MSVOA_V\METHOD\SOM2VLM040219S.M
 Title : VOC Analysis

Signal : TIC

peak #	R.T. min	first scan	max scan	last scan	PK TY	peak height	corr. area	corr. % max.	% of total
1	1.563	143	147	161	rVB	121963	138083	17.88%	2.635%
2	2.119	311	320	333	rVB	211383	294418	38.13%	5.618%
3	2.531	439	448	462	rVB2	41741	69089	8.95%	1.318%
4	2.753	513	517	518	rBV	337	220	0.03%	0.004%
5	2.798	524	531	535	rBV5	1796	2352	0.30%	0.045%
6	3.068	604	615	628	rVB4	11711	23516	3.05%	0.449%
7	3.209	658	659	663	rVB2	469	220	0.03%	0.004%
8	3.373	706	710	715	rBV2	774	830	0.11%	0.016%
9	3.399	715	718	721	rVV3	399	295	0.04%	0.006%
10	3.437	728	730	734	rVB2	458	271	0.04%	0.005%
11	3.457	734	736	740	rBV2	626	319	0.04%	0.006%
12	3.518	753	755	758	rVB2	558	275	0.04%	0.005%
13	3.675	802	804	808	rVB2	372	229	0.03%	0.004%
14	3.701	808	812	816	rBV2	521	487	0.06%	0.009%
15	3.740	820	824	826	rBV2	431	343	0.04%	0.007%
16	3.788	836	839	844	rBV4	573	484	0.06%	0.009%
17	3.939	874	886	904	rBV	32507	89194	11.55%	1.702%
18	4.296	994	997	999	rBV2	475	338	0.04%	0.006%
19	4.396	1011	1028	1056	rBV3	130994	331541	42.94%	6.326%
20	4.560	1077	1079	1085	rVB4	710	481	0.06%	0.009%
21	4.598	1088	1091	1098	rBV2	644	492	0.06%	0.009%
22	4.701	1120	1123	1126	rBV3	874	685	0.09%	0.013%
23	4.807	1152	1156	1158	rBV	656	410	0.05%	0.008%
24	4.868	1173	1175	1177	rBV3	419	282	0.04%	0.005%
25	4.894	1181	1183	1188	rVB2	423	307	0.04%	0.006%
26	4.923	1188	1192	1194	rBV	393	258	0.03%	0.005%
27	4.945	1194	1199	1201	rVV3	509	403	0.05%	0.008%
28	5.093	1226	1245	1273	rBV2	306347	772168	100.00%	14.734%
29	5.360	1324	1328	1330	rBV3	477	488	0.06%	0.009%
30	5.405	1339	1342	1345	rBV3	512	324	0.04%	0.006%
31	5.463	1356	1360	1369	rVB2	644	740	0.10%	0.014%
32	5.521	1374	1378	1379	rBV2	702	412	0.05%	0.008%
33	5.566	1388	1392	1393	rBV2	1225	735	0.10%	0.014%
34	5.662	1409	1422	1441	rBV	283583	560919	72.64%	10.703%

Data Path : Z:\VOASRV\HPCHEM1\MSVOA V\DATA\VV040819\
 Data File : VV010197.D
 Acq On : 09 Apr 2019 01:56
 Operator : SY/MD
 Sample : K2254-11
 Misc : 5.11G/10mL/MSVOA V/SOIL
 ALS Vial : 1 Sample Multiplier: 1

Instrument :
 MSVOA_V
 ClientSampleId :
 BFC31

Integration Parameters: LSCINT.P

Integrator: RTE
 Smoothing : OFF
 Sampling : 1
 Start Thrs: 0.2
 Stop Thrs : 0

Filtering: 5
 Min Area: 0 % of largest Peak
 Max Peaks: 100
 Peak Location: TOP

If leading or trailing edge < 100 prefer < Baseline drop else tangent >
 Peak separation: 5

Method : Z:\VOASRV\HPCHEM1\MSVOA_V\METHOD\SOM2VLM040219S.M
 Title : VOC Analysis

35	5.942	1500	1509	1522	rBV9	7313	15218	1.97%	0.290%
36	5.987	1522	1523	1526	rBV2	617	248	0.03%	0.005%
37	6.019	1530	1533	1536	rBV4	538	345	0.04%	0.007%
38	6.116	1549	1563	1588	rBV2	178156	362358	46.93%	6.914%
39	6.334	1626	1631	1632	rBV2	714	515	0.07%	0.010%
40	6.367	1637	1641	1644	rBV3	857	635	0.08%	0.012%
41	6.486	1675	1678	1684	rVB2	608	527	0.07%	0.010%
42	6.543	1693	1696	1699	rBV	470	352	0.05%	0.007%
43	6.579	1702	1707	1710	rBV2	562	504	0.07%	0.010%
44	6.772	1765	1767	1773	rVB5	685	522	0.07%	0.010%
45	6.817	1774	1781	1782	rBV2	3267	3225	0.42%	0.062%
46	6.881	1798	1801	1803	rBV4	747	361	0.05%	0.007%
47	6.910	1808	1810	1812	rBV2	427	273	0.04%	0.005%
48	7.029	1834	1847	1861	rBV	74233	131493	17.03%	2.509%
49	7.122	1871	1876	1878	rBV5	1696	1578	0.20%	0.030%
50	7.260	1917	1919	1920	rBV	463	225	0.03%	0.004%
51	7.360	1938	1950	1965	rBV	303400	530490	68.70%	10.123%
52	7.601	2023	2025	2027	rBV2	557	307	0.04%	0.006%
53	7.662	2034	2044	2063	rBV	46243	79363	10.28%	1.514%
54	7.759	2071	2074	2076	rBV2	835	446	0.06%	0.009%
55	7.791	2082	2084	2087	rBV2	730	543	0.07%	0.010%
56	8.080	2172	2174	2179	rVB4	725	575	0.07%	0.011%
57	8.135	2179	2191	2209	rBV	113815	199098	25.78%	3.799%
58	8.418	2277	2279	2283	rBV2	469	332	0.04%	0.006%
59	8.473	2293	2296	2297	rBV2	643	339	0.04%	0.006%
60	8.762	2383	2386	2391	rBV4	918	759	0.10%	0.014%
61	8.817	2401	2403	2406	rBV2	711	335	0.04%	0.006%
62	8.897	2415	2428	2448	rBV	342523	572152	74.10%	10.918%
63	9.051	2470	2476	2488	rBV6	4308	7073	0.92%	0.135%
64	9.685	2671	2673	2675	rBV2	646	276	0.04%	0.005%
65	9.797	2705	2708	2712	rBV2	1036	784	0.10%	0.015%
66	9.942	2747	2753	2756	rBV4	1016	1057	0.14%	0.020%
67	10.170	2817	2824	2835	rVB8	8107	14974	1.94%	0.286%
68	10.260	2841	2852	2870	rBV	155484	246413	31.91%	4.702%
69	10.498	2914	2926	2930	rBV4	6940	12216	1.58%	0.233%
70	10.585	2947	2953	2959	rBV4	3262	5100	0.66%	0.097%
71	10.681	2980	2983	2985	rBV2	679	425	0.06%	0.008%

Data Path : Z:\VOASRV\HPCHEM1\MSVOA V\DATA\VV040819\
 Data File : VV010197.D
 Acq On : 09 Apr 2019 01:56
 Operator : SY/MD
 Sample : K2254-11
 Misc : 5.11G/10mL/MSVOA V/SOIL
 ALS Vial : 1 Sample Multiplier: 1

Instrument :
 MSVOA_V
 ClientSampleId :
 BFC31

Integration Parameters: LSCINT.P

Integrator: RTE
 Smoothing : OFF Filtering: 5
 Sampling : 1 Min Area: 0 % of largest Peak
 Start Thrs: 0.2 Max Peaks: 100
 Stop Thrs : 0 Peak Location: TOP

If leading or trailing edge < 100 prefer < Baseline drop else tangent >
 Peak separation: 5

Method : Z:\VOASRV\HPCHEM1\MSVOA_V\METHOD\SOM2VLM040219S.M
 Title : VOC Analysis

72	10.781	3009	3014	3015	rBV3	2197	1878	0.24%	0.036%
73	10.961	3059	3070	3082	rBV3	24055	38618	5.00%	0.737%
74	11.026	3087	3090	3092	rBV3	682	394	0.05%	0.008%
75	11.067	3098	3103	3104	rBV4	1129	891	0.12%	0.017%
76	11.193	3131	3142	3151	rBV6	7585	12011	1.56%	0.229%
77	11.296	3163	3174	3191	rBV	213513	352505	45.65%	6.726%
78	11.575	3256	3261	3270	rBV7	5298	8441	1.09%	0.161%
79	11.672	3281	3291	3307	rVB	185074	307456	39.82%	5.867%
80	11.868	3348	3352	3353	rBV5	1917	1333	0.17%	0.025%
81	11.926	3368	3370	3374	rBV2	908	775	0.10%	0.015%
82	12.064	3406	3413	3419	rVB5	4533	6442	0.83%	0.123%
83	12.231	3463	3465	3467	rBV2	593	348	0.05%	0.007%
84	12.263	3473	3475	3477	rBV3	969	454	0.06%	0.009%
85	12.292	3477	3484	3495	rVB2	3316	5790	0.75%	0.110%
86	12.514	3547	3553	3563	rVB4	5721	8512	1.10%	0.162%
87	12.681	3603	3605	3610	rBV3	554	504	0.07%	0.010%
88	12.704	3610	3612	3613	rBV	651	264	0.03%	0.005%
89	12.771	3629	3633	3644	rVB6	2357	3479	0.45%	0.066%
90	12.990	3698	3701	3704	rBV4	1541	1116	0.14%	0.021%
91	13.305	3795	3799	3801	rBV3	1529	1341	0.17%	0.026%
92	13.427	3835	3837	3839	rBV3	757	395	0.05%	0.008%
93	13.485	3851	3855	3857	rBV	577	518	0.07%	0.010%
94	13.633	3899	3901	3903	rBV3	698	323	0.04%	0.006%
95	13.726	3927	3930	3931	rBV2	705	379	0.05%	0.007%
96	13.948	3997	3999	4001	rBV3	1182	732	0.09%	0.014%
97	14.054	4028	4032	4034	rBV2	915	783	0.10%	0.015%
98	14.373	4128	4131	4133	rBV4	811	499	0.06%	0.010%
99	14.479	4159	4164	4165	rBV3	1412	1063	0.14%	0.020%
100	14.832	4272	4274	4275	rBV	872	343	0.04%	0.007%

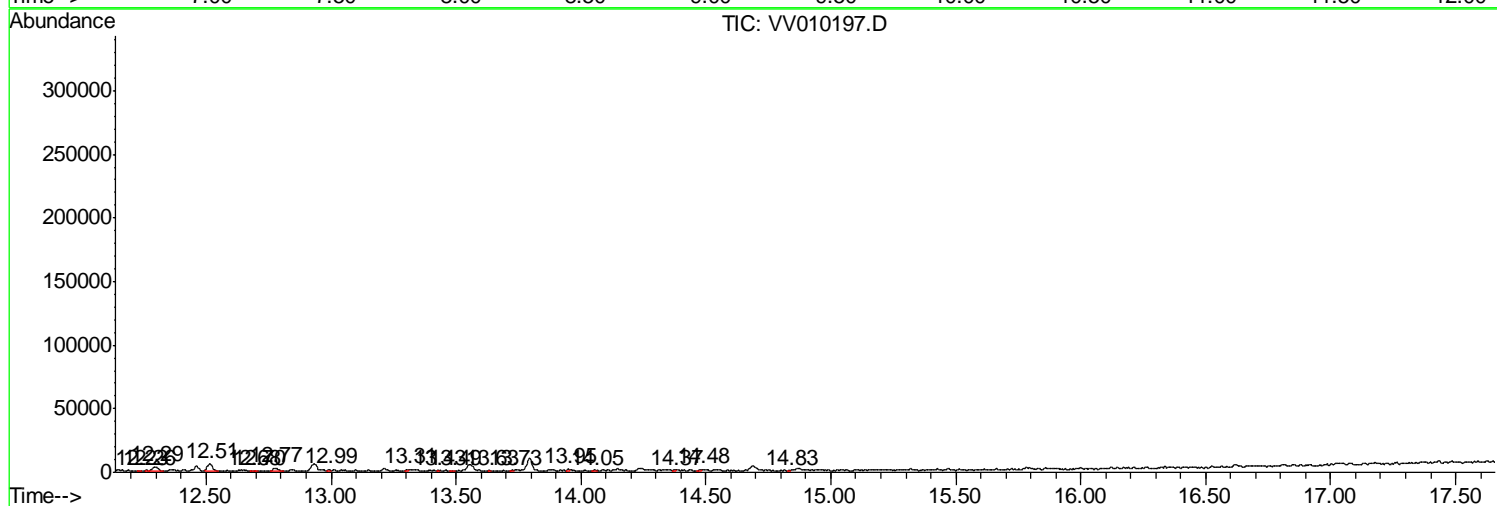
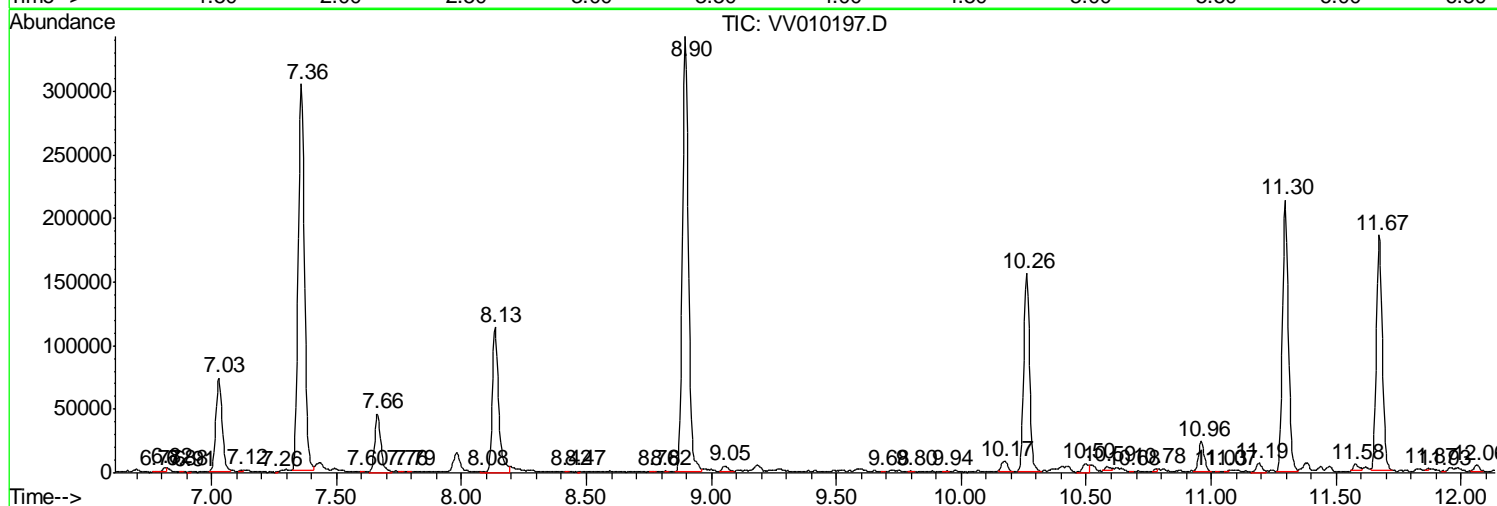
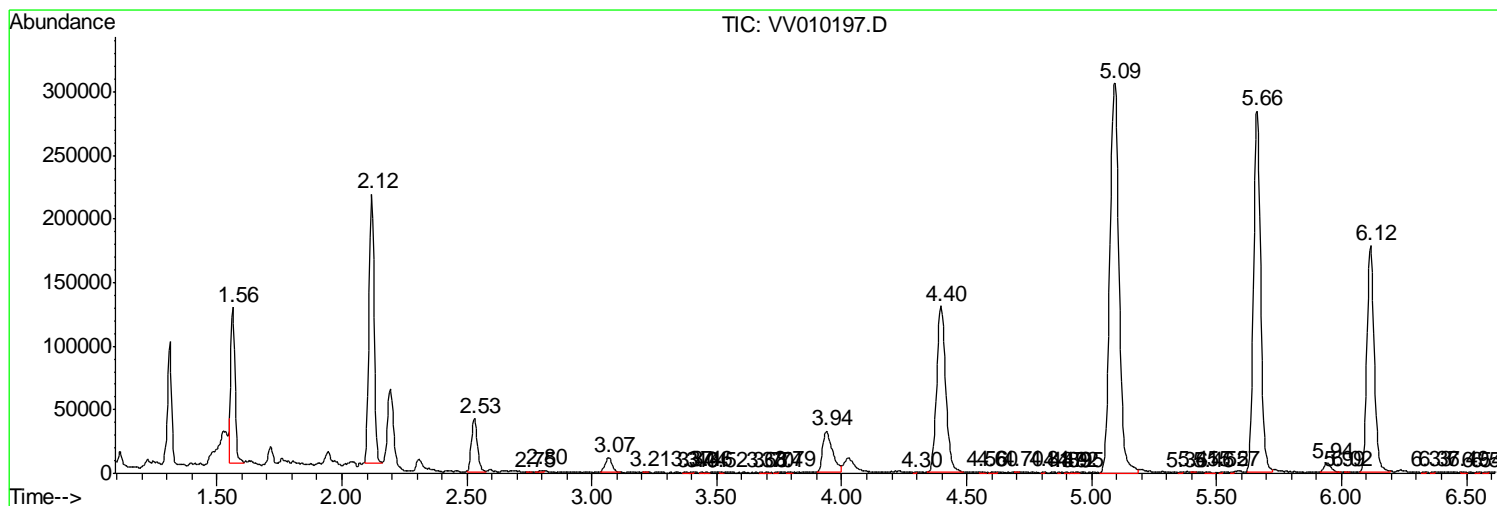
Sum of corrected areas: 5240631

Data Path : Z:\VOASRV\HPCHEM1\MSVOA V\DATA\VV040819\
 Data File : VV010197.D
 Acq On : 09 Apr 2019 01:56
 Operator : SY/MD
 Sample : K2254-11
 Misc : 5.11G/10mL/MSVOA V/SOIL
 ALS Vial : 1 Sample Multiplier: 1

Instrument :
 MSVOA_V
Client Sampled :
 BFC31

Quant Method : Z:\VOASRV\HPCHEM1\MSVOA_V\METHOD\SOM2VLM040219S.M
 Quant Title : VOC Analysis

TIC Library : C:\DATABASE\NIST11.L
 TIC Integration Parameters: LSCINT.P



Data Path : Z:\VOASRV\HPCHEM1\MSVOA_V\DATA\VV040819\
Data File : VV010197.D
Acq On : 09 Apr 2019 01:56
Operator : SY/MD
Sample : K2254-11
Misc : 5.11G/10mL/MSVOA_V/SOIL
ALS Vial : 1 Sample Multiplier: 1

Instrument :
MSVOA_V
ClientSampleId :
BFC31

Quant Method : Z:\VOASRV\HPCHEM1\MSVOA_V\METHOD\SOM2VLM040219S.M
Quant Title : VOC Analysis

TIC Library : C:\DATABASE\NIST11.L
TIC Integration Parameters: LSCINT.P

No Library Search Compounds Detected

Data Path : Z:\VOASRV\HPCHEM1\MSVOA_V\DATA\VV040819\
Data File : VV010197.D
Acq On : 09 Apr 2019 01:56
Operator : SY/MD
Sample : K2254-11
Misc : 5.11G/10mL/MSVOA_V/SOIL
ALS Vial : 1 Sample Multiplier: 1

Instrument :
MSVOA_V
ClientSampleId :
BFC31

Quant Method : Z:\VOASRV\HPCHEM1\MSVOA_V\METHOD\SOM2VLM040219S.M
Quant Title : VOC Analysis

TIC Library : C:\DATABASE\NIST11.L
TIC Integration Parameters: LSCINT.P

TIC Top Hit name	RT	EstConc	Units	Response	--Internal Standard--			
					#	RT	Resp	Conc
