

Data Path : Z:\voasrv\HPCHEM1\MSVOA_V\Data\VV041023\
 Data File : VV030464.D
 Acq On : 10 Apr 2023 13:28
 Operator : SY/MD
 Sample : 02250-12
 Misc : 25.0mL/MSVOA_V/WATER
 ALS Vial : 9 Sample Multiplier: 1

Instrument :
 MSVOA_V
 ClientSampleId :
 BHDY2

Integration Parameters: rteint.p

Integrator: RTE
 Smoothing : ON Filtering: 5
 Sampling : 1 Min Area: 3 % of largest Peak
 Start Thrs: 0.1 Max Peaks: 100
 Stop Thrs : 0 Peak Location: TOP

If leading or trailing edge < 100 prefer < Baseline drop else tangent >
 Peak separation: 5

Method : Z:\voasrv\HPCHEM1\MSVOA_V\Method\SFAMVTR032323WMA.M
 Title : TRACE VOA SFAM1.0

Signal : TIC: VV030464.D\data.ms

peak #	R.T. min	first scan	max scan	last scan	PK TY	peak height	corr. area	corr. % max.	% of total
1	1.282	68	75	91	rVB	47009	52934	11.09%	1.352%
2	1.536	147	154	167	rVB	53443	67476	14.14%	1.723%
3	2.063	307	318	333	rBV	112530	166222	34.83%	4.245%
4	2.452	431	439	454	rVB4	6113	11385	2.39%	0.291%
5	2.973	592	601	612	rBV8	2483	5411	1.13%	0.138%
6	3.838	856	870	901	rBV2	29114	147404	30.89%	3.764%
7	4.265	984	1003	1028	rBV	87336	234289	49.09%	5.983%
8	4.969	1205	1222	1242	rBV3	185407	477228	100.00%	12.187%
9	5.542	1388	1400	1423	rBV	147975	318610	66.76%	8.136%
10	5.998	1526	1542	1567	rBV	115267	245955	51.54%	6.281%
11	6.921	1817	1829	1854	rBV	46298	95227	19.95%	2.432%
12	7.252	1917	1932	1951	rBV	206547	377949	79.20%	9.652%
13	7.564	2018	2029	2048	rBV	27773	54483	11.42%	1.391%
14	8.037	2165	2176	2213	rBV	183463	419360	87.87%	10.709%
15	8.792	2400	2411	2440	rBV	220860	382122	80.07%	9.758%
16	10.162	2827	2837	2857	rBV	84035	138556	29.03%	3.538%
17	10.333	2880	2890	2900	rBV2	8548	14229	2.98%	0.363%
18	11.194	3146	3158	3174	rBV	223303	359547	75.34%	9.182%
19	11.567	3263	3274	3291	rVB	212926	342067	71.68%	8.735%
20	12.297	3494	3501	3512	rBV	3311	5502	1.15%	0.141%

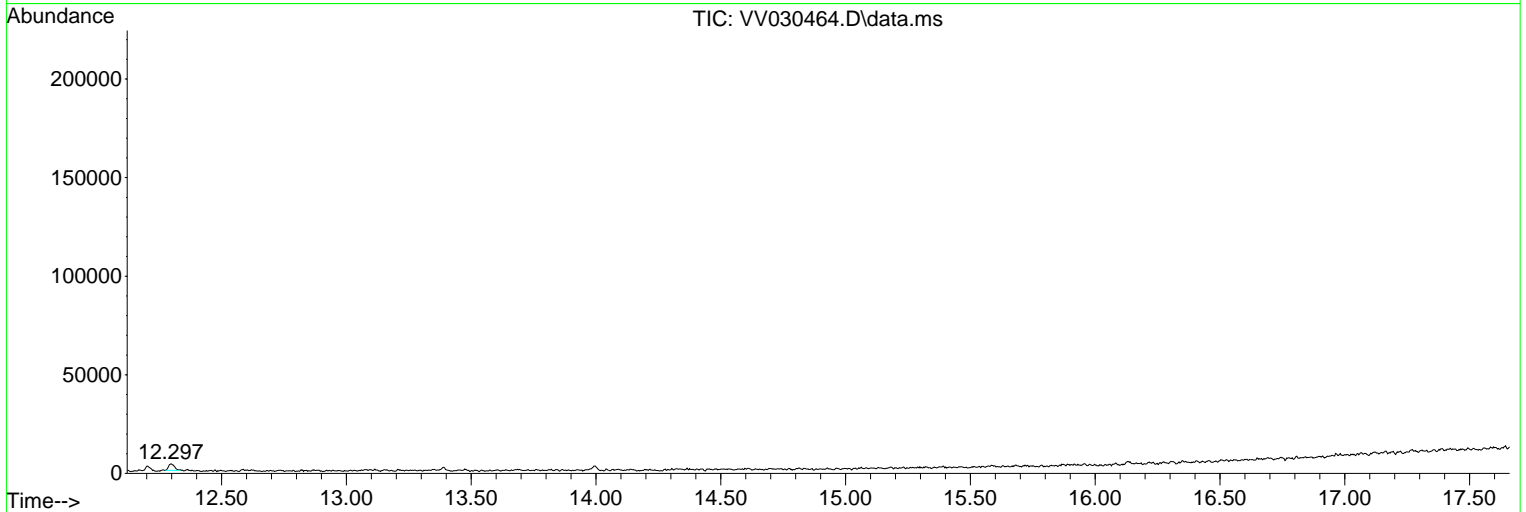
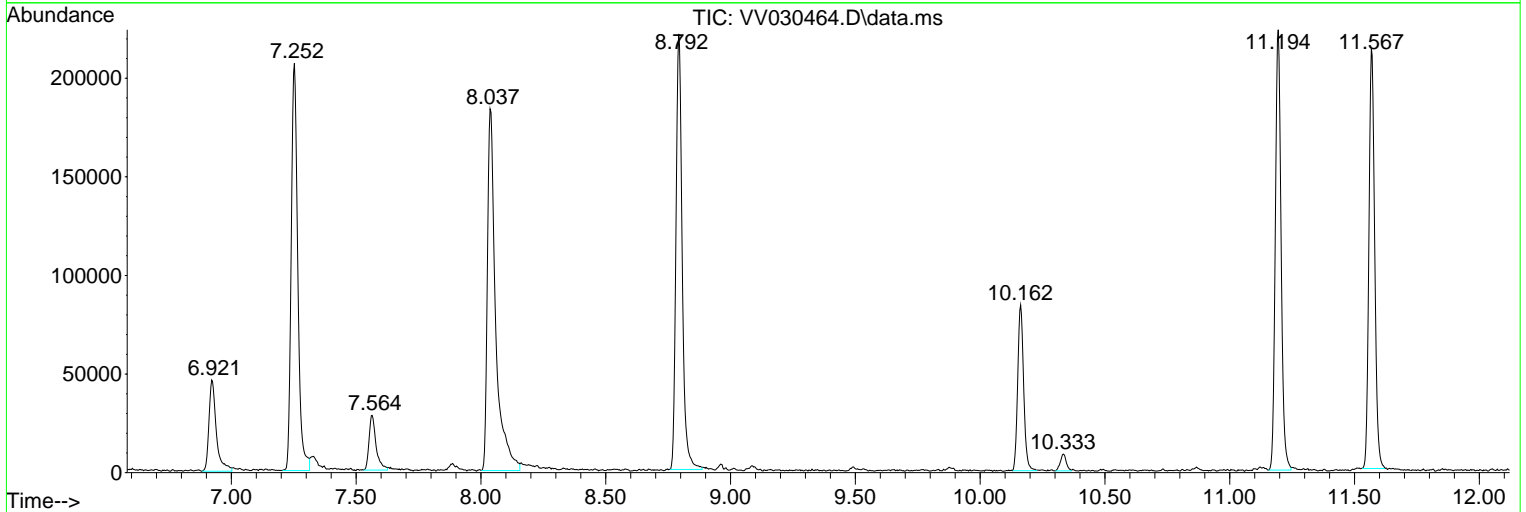
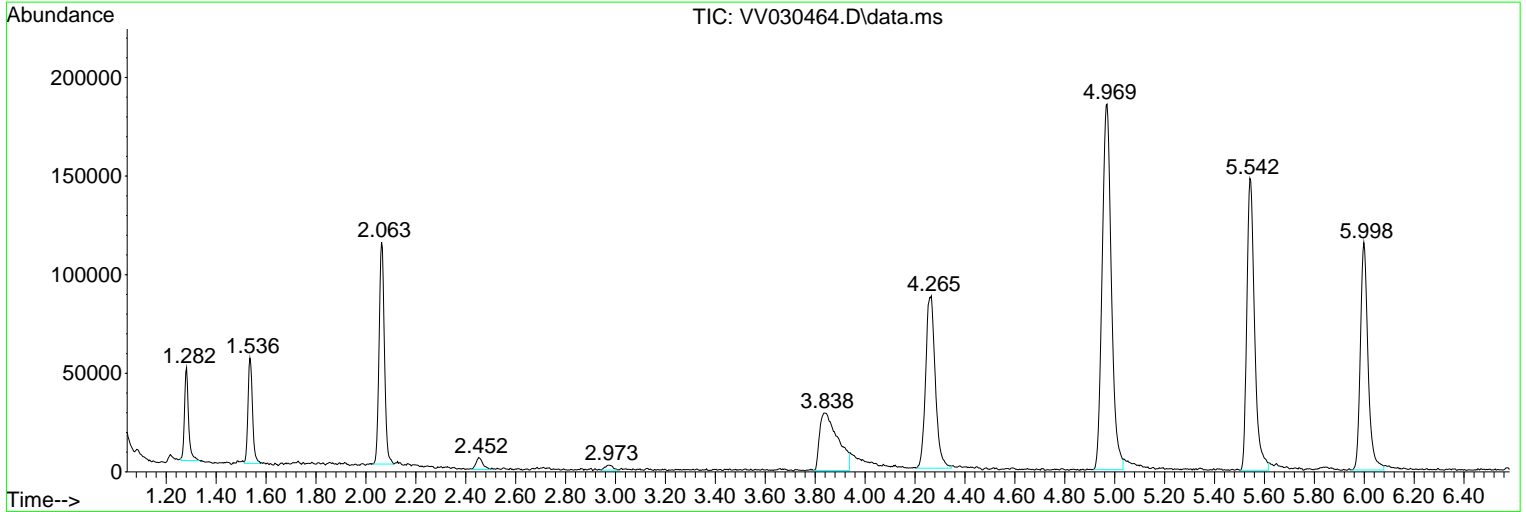
Sum of corrected areas: 3915956

Data Path : Z:\voasrv\HPCHEM1\MSVOA_V\Data\VV041023\
 Data File : VV030464.D
 Acq On : 10 Apr 2023 13:28
 Operator : SY/MD
 Sample : 02250-12
 Misc : 25.0mL/MSVOA_V/WATER
 ALS Vial : 9 Sample Multiplier: 1

Instrument :
 MSVOA_V
 ClientSampleId :
 BDY2

Quant Method : Z:\voasrv\HPCHEM1\MSVOA_V\Method\SFAMVTR032323WMA.M
 Quant Title : TRACE VOA SFAM1.0

TIC Library : C:\Database\NIST0.L
 TIC Integration Parameters: LSCINT.P



Library Search Compound Report

Data Path : Z:\voasrv\HPCHEM1\MSVOA_V\Data\VV041023\
Data File : VV030464.D
Acq On : 10 Apr 2023 13:28
Operator : SY/MD
Sample : 02250-12
Misc : 25.0mL/MSVOA_V/WATER
ALS Vial : 9 Sample Multiplier: 1

Instrument :
MSVOA_V
ClientSampleId :
BHDY2

Quant Method : Z:\voasrv\HPCHEM1\MSVOA_V\Method\SFAMVTR032323WMA.M
Quant Title : TRACE VOA SFAM1.0

TIC Library : C:\Database\NIST20.L
TIC Integration Parameters: LSCINT.P

No Library Search Compounds Detected

Data Path : Z:\voasrv\HPCHEM1\MSVOA_V\Data\VV041023\
Data File : VV030464.D
Acq On : 10 Apr 2023 13:28
Operator : SY/MD
Sample : 02250-12
Misc : 25.0mL/MSVOA_V/WATER
ALS Vial : 9 Sample Multiplier: 1

Instrument :
MSVOA_V
ClientSampleId :
BHDY2

Quant Method : Z:\voasrv\HPCHEM1\MSVOA_V\Method\SFAMVTR032323WMA.M
Quant Title : TRACE VOA SFAM1.0

TIC Library : C:\Database\NIST0.L
TIC Integration Parameters: LSCINT.P

TIC Top Hit name	RT	EstConc	Units	Response	--Internal Standard--			
					#	RT	Resp	Conc
