

Data Path : Z:\voasrv\HPCHEM1\MSVOA_V\Data\VW041123\
 Data File : VW030508.D
 Acq On : 11 Apr 2023 20:42
 Operator : SY/MD
 Sample : 02250-05
 Misc : 25.0mL/MSVOA_V/WATER
 ALS Vial : 25 Sample Multiplier: 1

Instrument :
 MSVOA_V
 ClientSampleId :
 BHD6

Quant Time: Apr 12 05:06:01 2023
 Quant Method : Z:\voasrv\HPCHEM1\MSVOA_V\Method\SFAMVTR032323WMA.M
 Quant Title : TRACE VOA SFAM1.0
 QLast Update : Wed Apr 12 05:00:18 2023
 Response via : Initial Calibration

Compound	R.T.	QIon	Response	Conc	Units	Dev(Min)
Internal Standards						
1) 1,4-Difluorobenzene	5.545	114	129075	5.000	ug/L	0.00
28) Chlorobenzene-d5	8.792	117	125008	5.000	ug/L	0.00
58) 1,4-Dichlorobenzene-d4	11.194	152	61479	5.000	ug/L	0.00
System Monitoring Compounds						
4) Vinyl Chloride-d3	1.281	65	29843	3.491	ug/L	0.00
Spiked Amount	5.000	Range 40 - 130	Recovery	=	69.800%	
7) Chloroethane-d5	1.539	69	34072	4.107	ug/L	0.00
Spiked Amount	5.000	Range 65 - 130	Recovery	=	82.200%	
11) 1,1-Dichloroethene-d2	2.072	63	1764529	86.985	ug/L	0.00
Spiked Amount	5.000	Range 60 - 125	Recovery	=	1739.800%#	
20) 2-Butanone-d5	3.818	46	123716	55.991	ug/L	0.00
Spiked Amount	50.000	Range 40 - 130	Recovery	=	111.980%	
24) Chloroform-d	4.262	84	95604	4.621	ug/L	0.00
Spiked Amount	5.000	Range 70 - 125	Recovery	=	92.400%	
26) 1,2-Dichloroethane-d4	4.953	65	47884	4.905	ug/L	0.00
Spiked Amount	5.000	Range 70 - 130	Recovery	=	98.200%	
32) Benzene-d6	4.973	84	163971	4.655	ug/L	0.00
Spiked Amount	5.000	Range 70 - 125	Recovery	=	93.000%	
36) 1,2-Dichloropropane-d6	5.998	67	54907	4.979	ug/L	0.00
Spiked Amount	5.000	Range 60 - 140	Recovery	=	99.600%	
41) Toluene-d8	7.252	98	132920	4.109	ug/L	0.00
Spiked Amount	5.000	Range 70 - 130	Recovery	=	82.200%	
43) trans-1,3-Dichloroprop...	7.564	79	17620	4.243	ug/L	0.00
Spiked Amount	5.000	Range 55 - 130	Recovery	=	84.800%	
46) 2-Hexanone-d5	8.034	63	91878	55.065	ug/L	0.00
Spiked Amount	50.000	Range 45 - 130	Recovery	=	110.140%	
56) 1,1,2,2-Tetrachloroeth...	10.162	84	41077	4.726	ug/L	0.00
Spiked Amount	5.000	Range 65 - 120	Recovery	=	94.600%	
66) 1,2-Dichlorobenzene-d4	11.570	152	54691	4.977	ug/L	0.00
Spiked Amount	5.000	Range 80 - 120	Recovery	=	99.600%	
Target Compounds						
3) Chloromethane	1.217	50	5671	0.274	ug/L	92
5) Vinyl chloride	1.285	62	5734	0.380	ug/L	85
6) Bromomethane	1.494	94	872	0.203	ug/L #	65
9) Trichlorofluoromethane	1.719	101	3401	0.155	ug/L	92
10) 1,1,2-Trichloro-1,2,2-...	2.072	101	301424	24.818	ug/L	97
12) 1,1-Dichloroethene	2.076	96	2883423	267.359	ug/L #	68
13) Acetone	2.072	43	4388	2.077	ug/L	90
14) Carbon disulfide	2.249	76	3541	0.100	ug/L #	82
16) Methylene chloride	2.455	84	12256	0.961	ug/L	97
17) Methyl tert-butyl Ether	2.715	73	31056	1.360	ug/L	96
18) trans-1,2-Dichloroethene	2.703	96	3588	0.316	ug/L	96
19) 1,1-Dichloroethane	3.121	63	2013924	91.433	ug/L	98
22) cis-1,2-Dichloroethene	3.825	96	187687	16.460	ug/L	99
25) Chloroform	4.288	83	27668	1.243	ug/L	93
27) 1,2-Dichloroethane	5.056	62	25640	1.905	ug/L	96
29) 1,1,1-Trichloroethane	4.522	97	513120	25.538	ug/L	99
31) Carbon tetrachloride	4.751	117	4575	0.251	ug/L	96
34) Trichloroethene	5.844	95	5380841	449.348	ug/L	96
35) Methylcyclohexane	5.998	83	13104	0.697	ug/L #	15

Data Path : Z:\voasrv\HPCHEM1\MSVOA_V\Data\VW041123\
 Data File : VW030508.D
 Acq On : 11 Apr 2023 20:42
 Operator : SY/MD
 Sample : 02250-05
 Misc : 25.0mL/MSVOA_V/WATER
 ALS Vial : 25 Sample Multiplier: 1

Instrument :
 MSVOA_V
 ClientSampleId :
 BHD6

Quant Time: Apr 12 05:06:01 2023
 Quant Method : Z:\voasrv\HPCHEM1\MSVOA_V\Method\SFAMVTR032323WMA.M
 Quant Title : TRACE VOA SFAM1.0
 QLast Update : Wed Apr 12 05:00:18 2023
 Response via : Initial Calibration

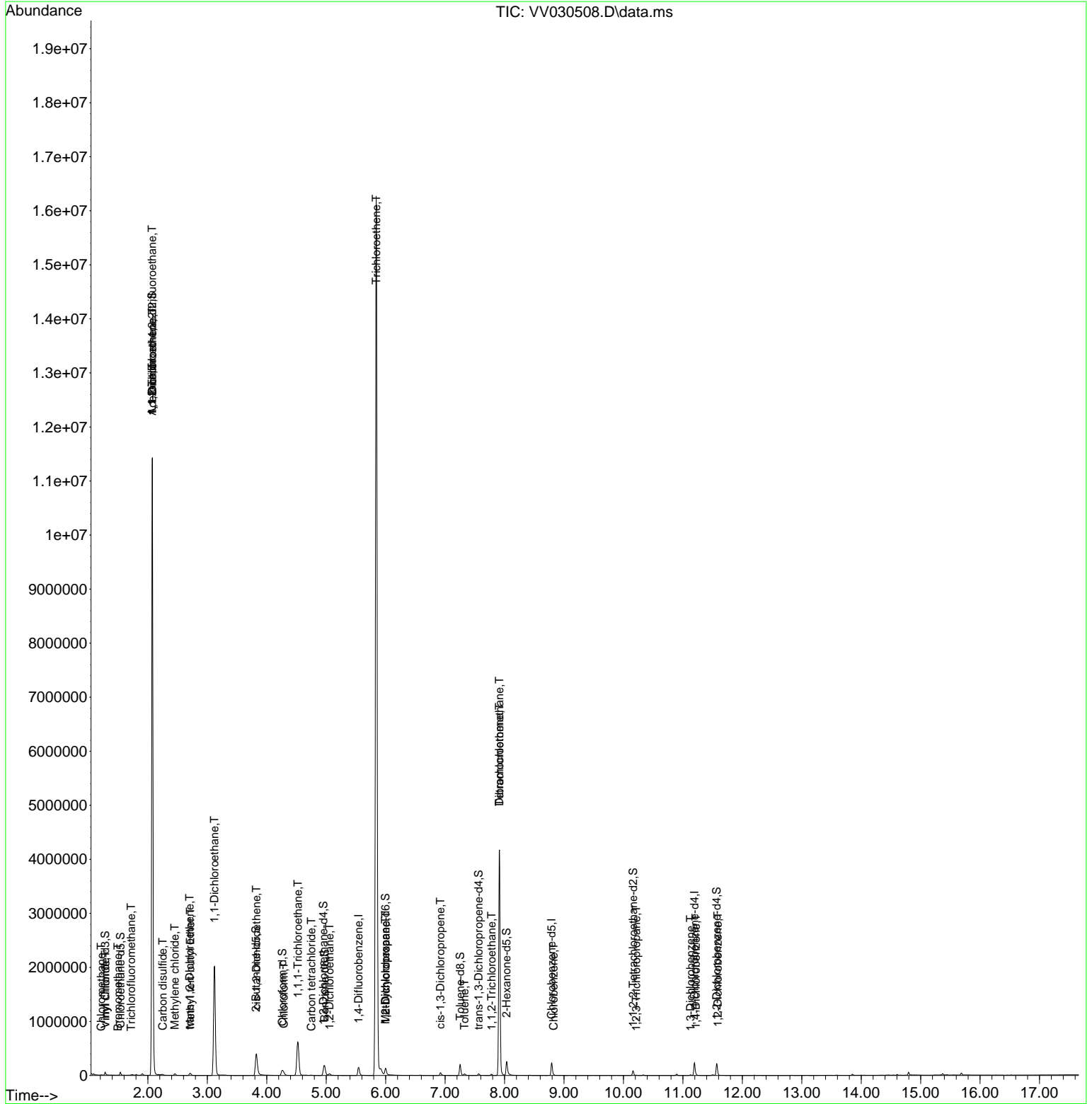
Compound	R.T.	QIon	Response	Conc	Units	Dev(Min)
37) 1,2-Dichloropropane	6.002	63	6493	0.570	ug/L #	87
39) cis-1,3-Dichloropropene	6.921	75	1686	0.105	ug/L	91
42) Toluene	7.326	91	19862	0.420	ug/L	100
45) 1,1,2-Trichloroethane	7.783	97	7341	0.915	ug/L	93
47) Tetrachloroethene	7.915	164	887732	83.999	ug/L	96
49) Dibromochloromethane	7.915	129	782697	81.925	ug/L #	12
51) Chlorobenzene	8.825	112	3853	0.127	ug/L	90
61) 1,2,3-Trichloropropane	10.217	75	1788	0.325	ug/L #	87
64) 1,3-Dichlorobenzene	11.130	146	4477	0.198	ug/L	97
65) 1,4-Dichlorobenzene	11.220	146	9007	0.395	ug/L	95
67) 1,2-Dichlorobenzene	11.586	146	6962	0.342	ug/L	97

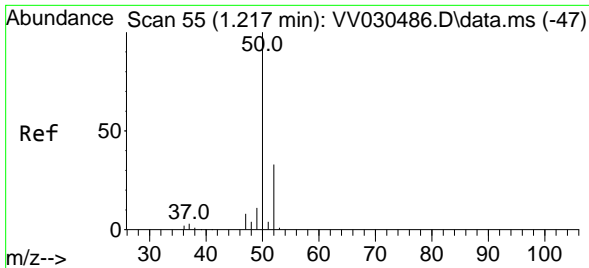
(#) = qualifier out of range (m) = manual integration (+) = signals summed

Data Path : Z:\voasrv\HPCHEM1\MSVOA_V\Data\VV041123\
 Data File : VV030508.D
 Acq On : 11 Apr 2023 20:42
 Operator : SY/MD
 Sample : 02250-05
 Misc : 25.0mL/MSVOA_V/WATER
 ALS Vial : 25 Sample Multiplier: 1

Instrument :
 MSVOA_V
 ClientSampleId :
 BHDX6

Quant Time: Apr 12 05:06:01 2023
 Quant Method : Z:\voasrv\HPCHEM1\MSVOA_V\Method\SFAMVTR032323WMA.M
 Quant Title : TRACE VOA SFAM1.0
 QLast Update : Wed Apr 12 05:00:18 2023
 Response via : Initial Calibration

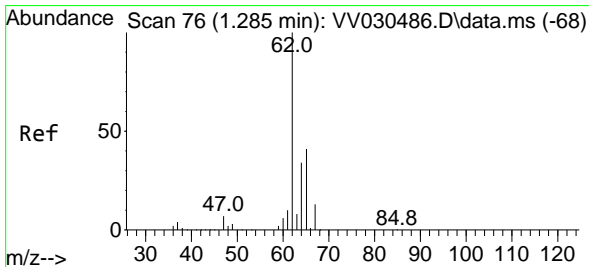
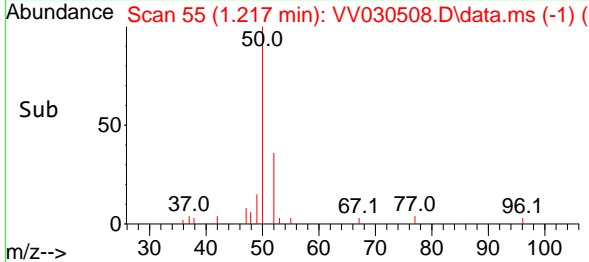
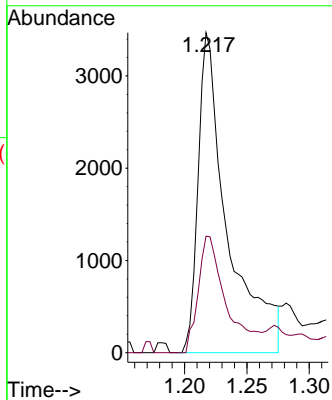
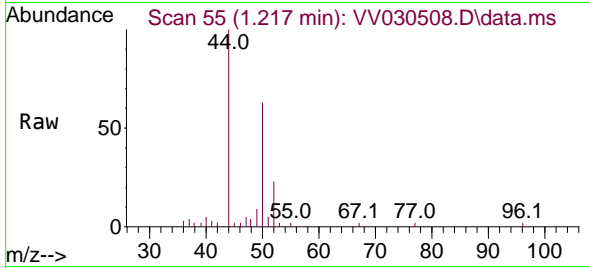




#3
 Chloromethane
 Concen: 0.274 ug/L
 RT: 1.217 min Scan# 51
 Delta R.T. -0.000 min
 Lab File: VV030508.D
 Acq: 11 Apr 2023 20:42

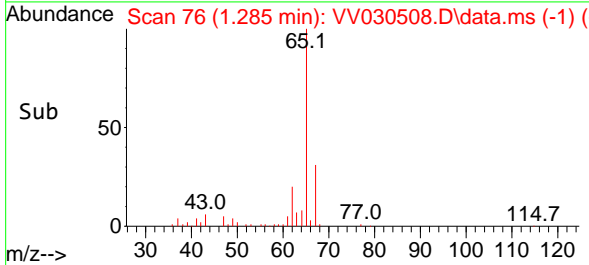
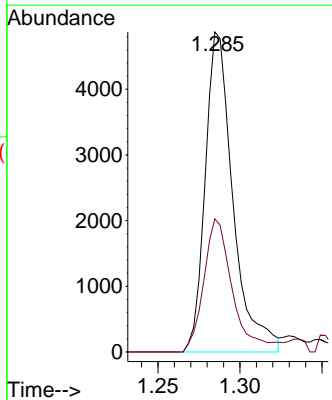
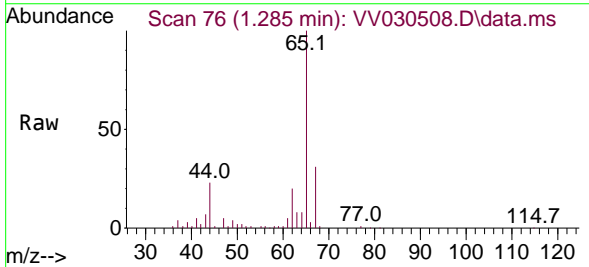
Instrument : MSVOA_V
 ClientSampleId : BHD6

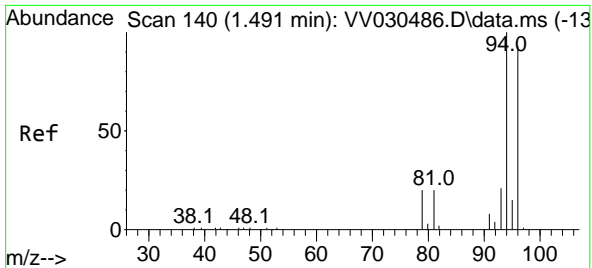
Tgt Ion: 50 Resp: 5671
 Ion Ratio Lower Upper
 50 100
 52 36.4 22.3 41.5



#5
 Vinyl chloride
 Concen: 0.380 ug/L
 RT: 1.285 min Scan# 76
 Delta R.T. -0.000 min
 Lab File: VV030508.D
 Acq: 11 Apr 2023 20:42

Tgt Ion: 62 Resp: 5734
 Ion Ratio Lower Upper
 62 100
 64 41.6 23.2 43.2

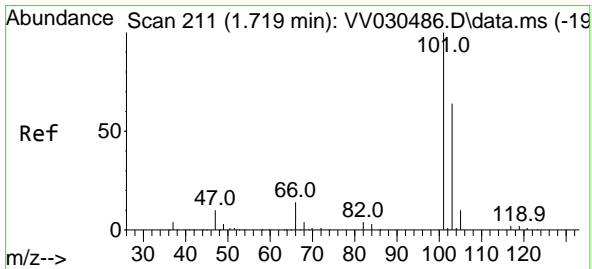
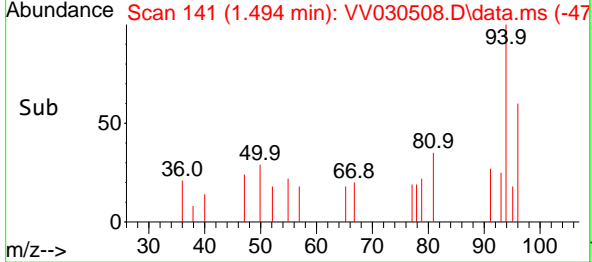
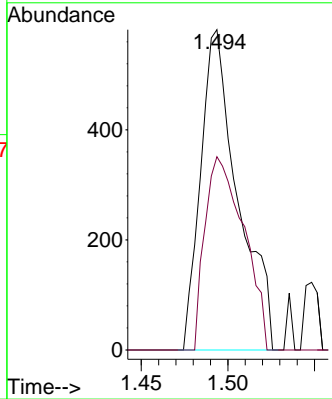
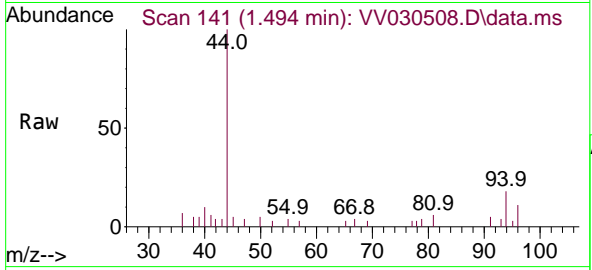




#6
 Bromomethane
 Concen: 0.203 ug/L
 RT: 1.494 min Scan# 140
 Delta R.T. 0.003 min
 Lab File: VV030508.D
 Acq: 11 Apr 2023 20:42

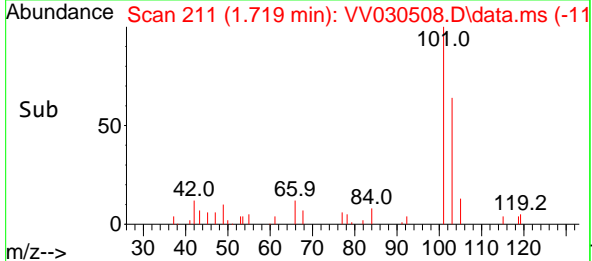
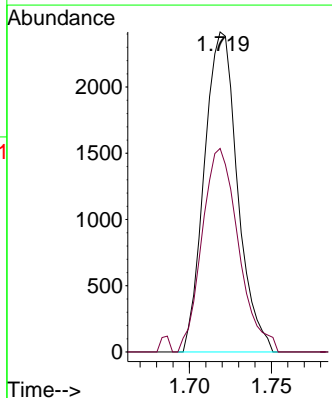
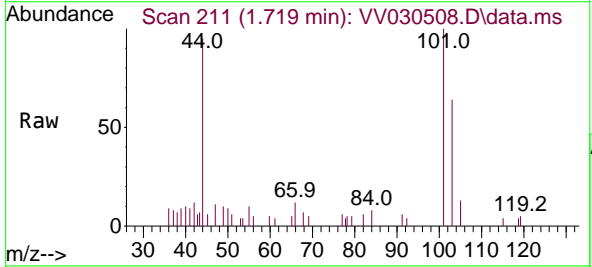
Instrument :
 MSVOA_V
 ClientSampleId :
 BHD6

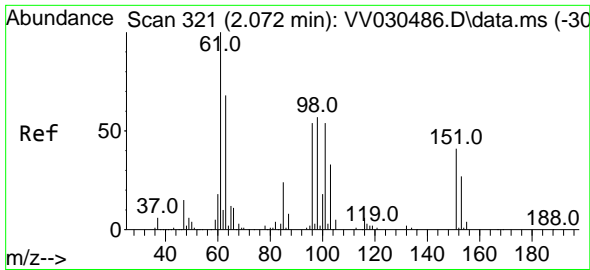
Tgt Ion: 94 Resp: 872
 Ion Ratio Lower Upper
 94 100
 96 60.3 66.1 122.7#



#9
 Trichlorofluoromethane
 Concen: 0.155 ug/L
 RT: 1.719 min Scan# 211
 Delta R.T. -0.000 min
 Lab File: VV030508.D
 Acq: 11 Apr 2023 20:42

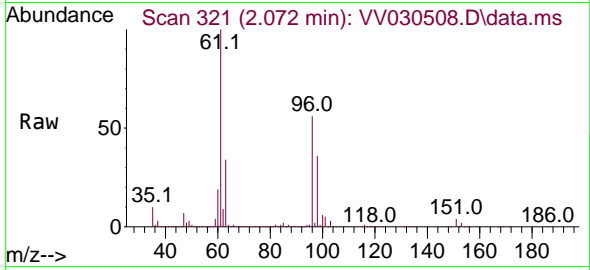
Tgt Ion: 101 Resp: 3401
 Ion Ratio Lower Upper
 101 100
 103 69.8 51.0 76.6



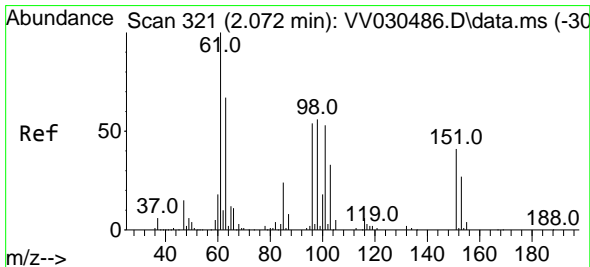
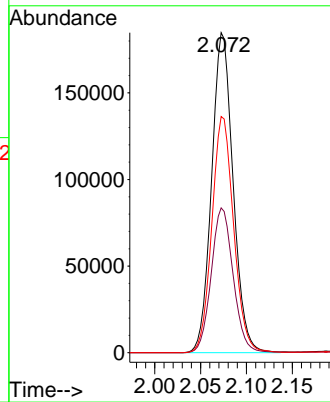
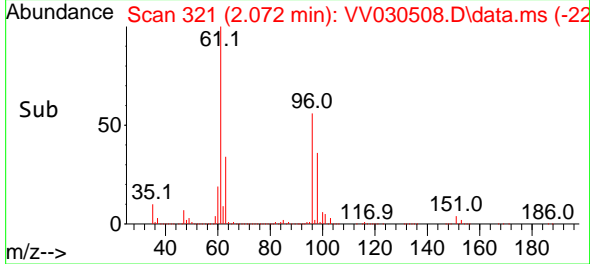


#10
 1,1,2-Trichloro-1,2,2-trifluoroethane
 Concen: 24.818 ug/L
 RT: 2.072 min Scan# 311
 Delta R.T. -0.000 min
 Lab File: VV030508.D
 Acq: 11 Apr 2023 20:42

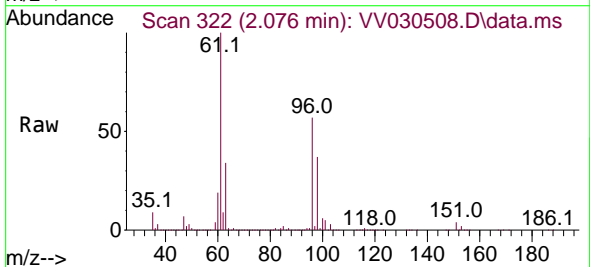
Instrument : MSVOA_V
 ClientSampleId : BHD6



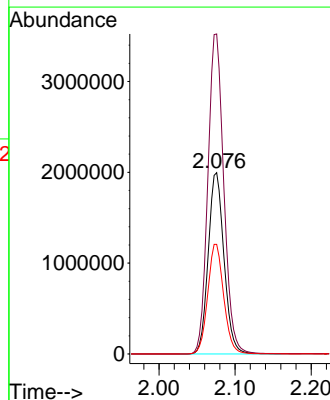
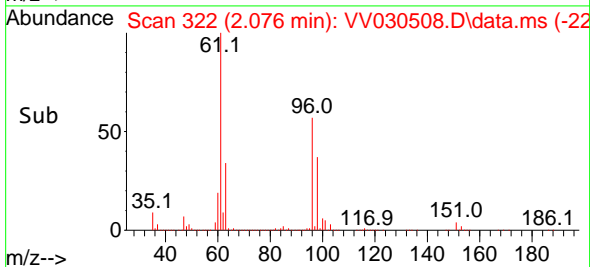
Tgt Ion:101 Resp: 301424
 Ion Ratio Lower Upper
 101 100
 85 46.2 38.1 57.1
 151 74.9 62.7 94.1

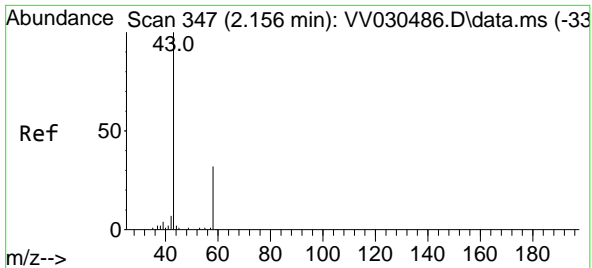


#12
 1,1-Dichloroethene
 Concen: 267.359 ug/L
 RT: 2.076 min Scan# 322
 Delta R.T. 0.003 min
 Lab File: VV030508.D
 Acq: 11 Apr 2023 20:42



Tgt Ion: 96 Resp: 2883423
 Ion Ratio Lower Upper
 96 100
 61 176.5 136.3 253.1
 63 60.4 92.1 171.1#

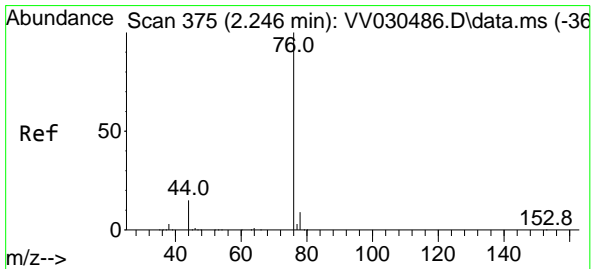
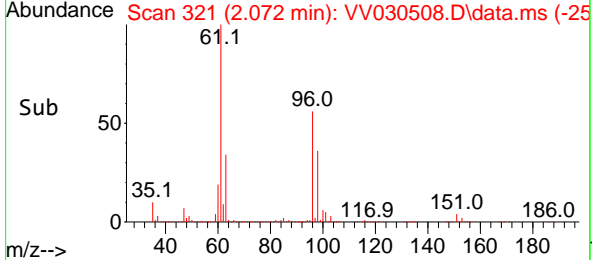
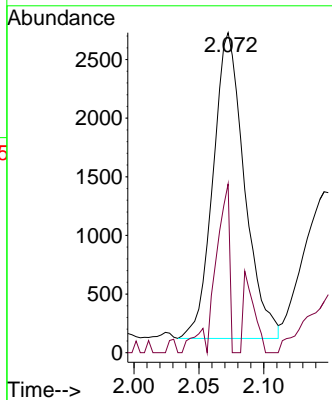
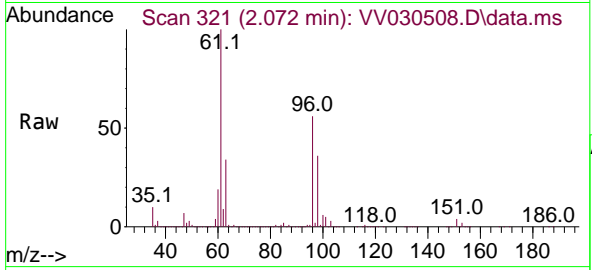




#13
 Acetone
 Concen: 2.077 ug/L
 RT: 2.072 min Scan# 311
 Delta R.T. -0.084 min
 Lab File: VV030508.D
 Acq: 11 Apr 2023 20:42

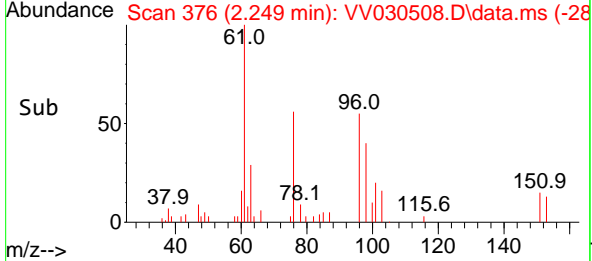
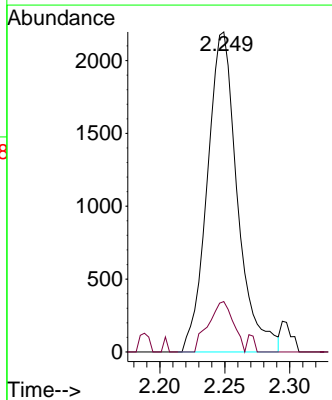
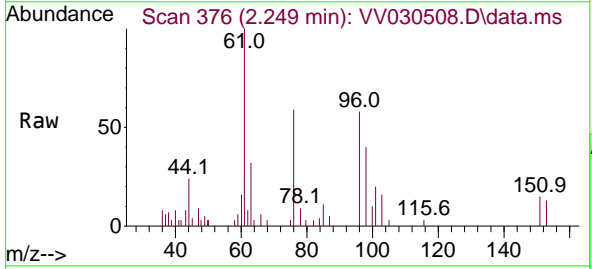
Instrument : MSVOA_V
 ClientSampleId : BHD6

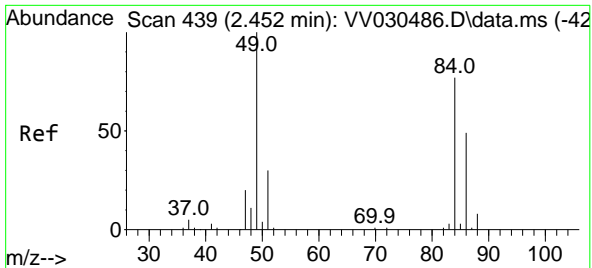
Tgt Ion: 43 Resp: 4388
 Ion Ratio Lower Upper
 43 100
 58 25.1 0.0 40.8



#14
 Carbon disulfide
 Concen: 0.100 ug/L
 RT: 2.249 min Scan# 376
 Delta R.T. 0.003 min
 Lab File: VV030508.D
 Acq: 11 Apr 2023 20:42

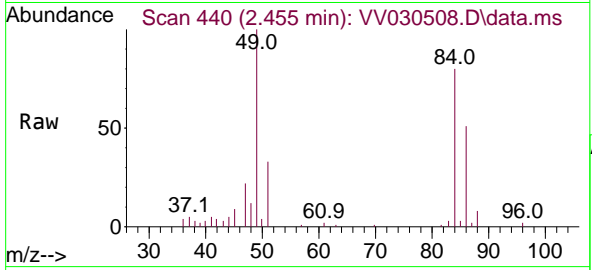
Tgt Ion: 76 Resp: 3541
 Ion Ratio Lower Upper
 76 100
 78 15.8 7.3 10.9#





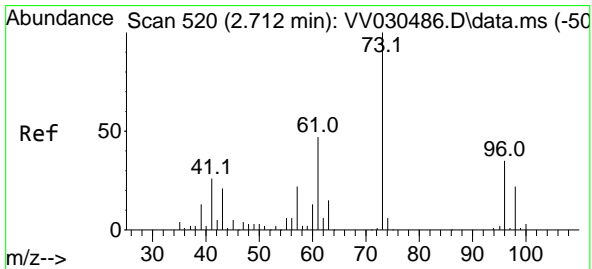
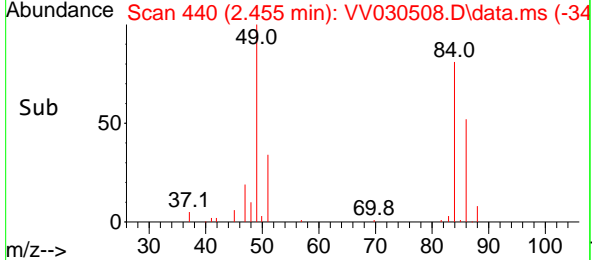
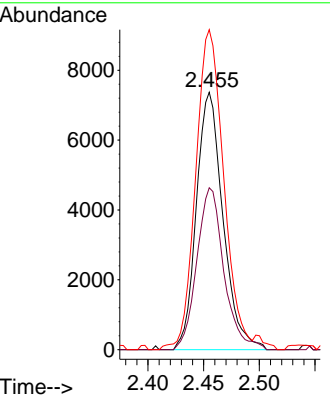
#16
 Methylene chloride
 Concen: 0.961 ug/L
 RT: 2.455 min Scan# 440
 Delta R.T. 0.003 min
 Lab File: VV030508.D
 Acq: 11 Apr 2023 20:42

Instrument : MSVOA_V
 ClientSampleId : BHD6



Tgt Ion: 84 Resp: 12256

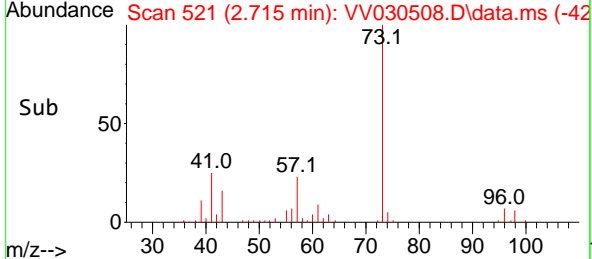
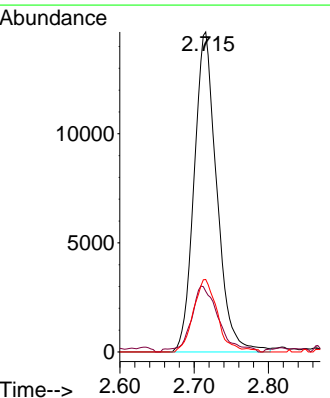
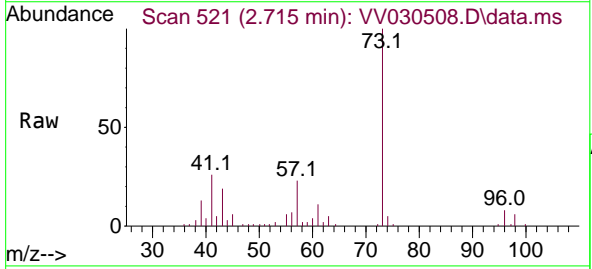
Ion	Ratio	Lower	Upper
84	100		
86	62.9	44.0	81.6
49	124.3	90.6	168.3

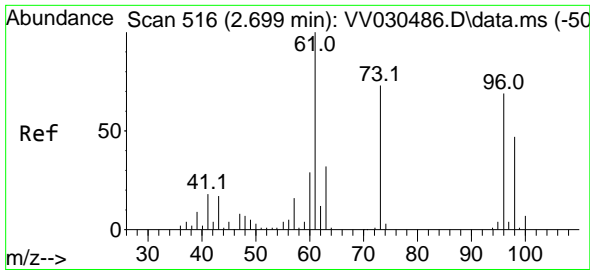


#17
 Methyl tert-butyl Ether
 Concen: 1.360 ug/L
 RT: 2.715 min Scan# 521
 Delta R.T. 0.003 min
 Lab File: VV030508.D
 Acq: 11 Apr 2023 20:42

Tgt Ion: 73 Resp: 31056

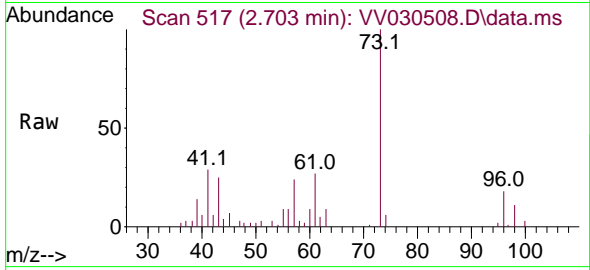
Ion	Ratio	Lower	Upper
73	100		
43	24.7	17.4	26.2
57	23.8	18.3	27.5



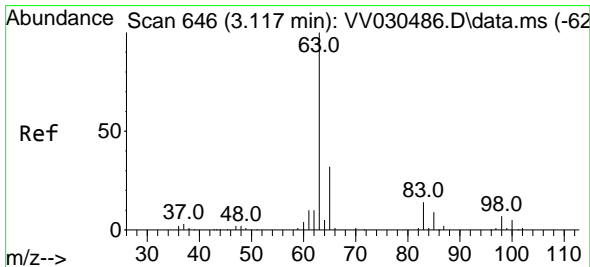
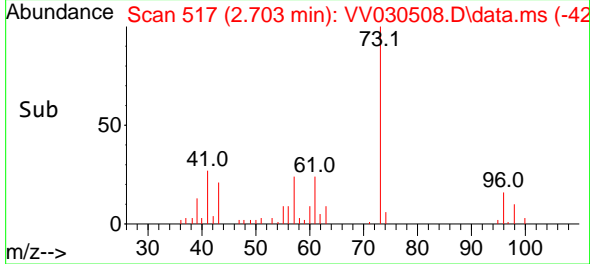
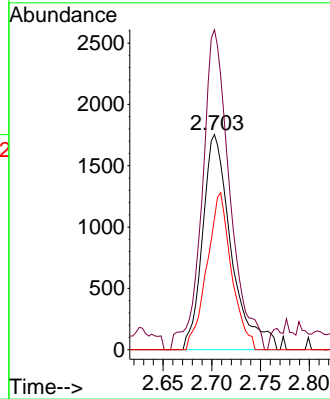


#18
 trans-1,2-Dichloroethene
 Concen: 0.316 ug/L
 RT: 2.703 min Scan# 516
 Delta R.T. 0.003 min
 Lab File: VV030508.D
 Acq: 11 Apr 2023 20:42

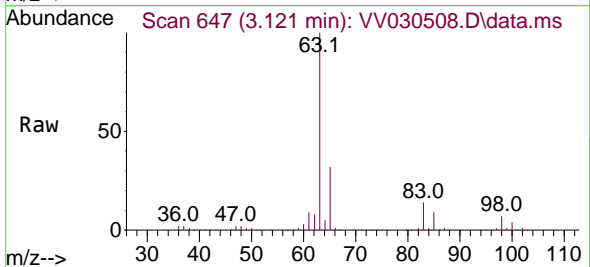
Instrument : MSVOA_V
 ClientSampleId : BHD6



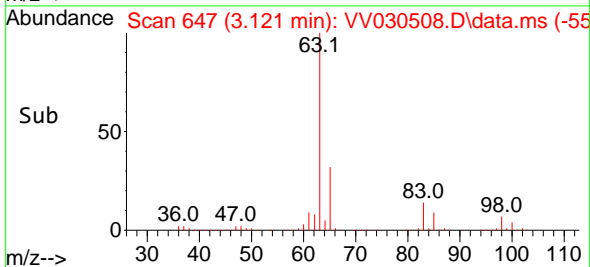
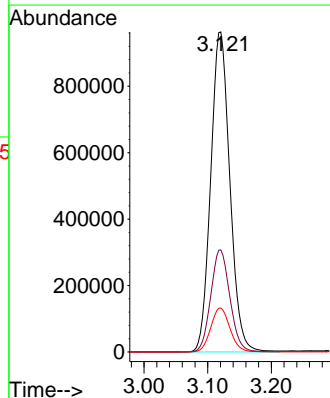
Tgt Ion: 96 Resp: 3588
 Ion Ratio Lower Upper
 96 100
 61 148.7 101.7 188.9
 98 61.0 45.8 85.2

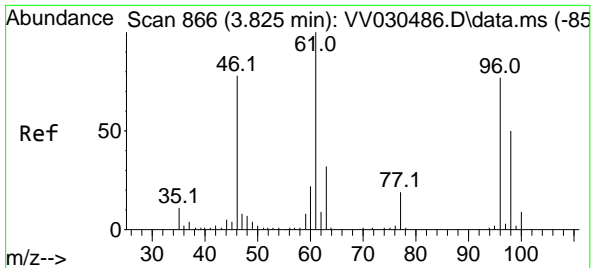


#19
 1,1-Dichloroethane
 Concen: 91.433 ug/L
 RT: 3.121 min Scan# 647
 Delta R.T. 0.003 min
 Lab File: VV030508.D
 Acq: 11 Apr 2023 20:42



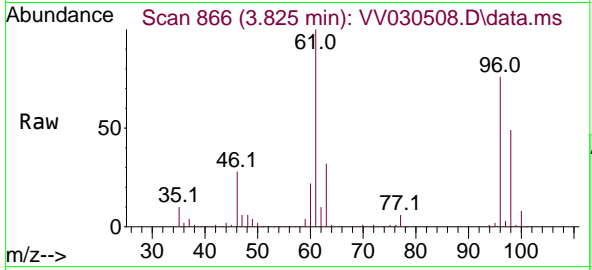
Tgt Ion: 63 Resp: 2013924
 Ion Ratio Lower Upper
 63 100
 65 31.9 21.7 40.3
 83 13.7 9.1 16.9



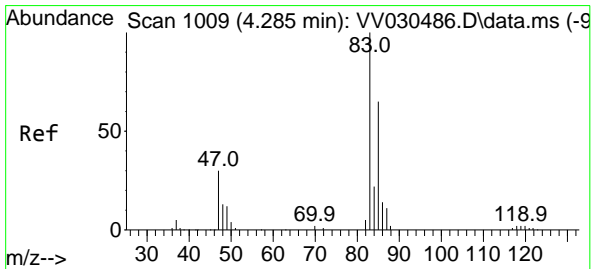
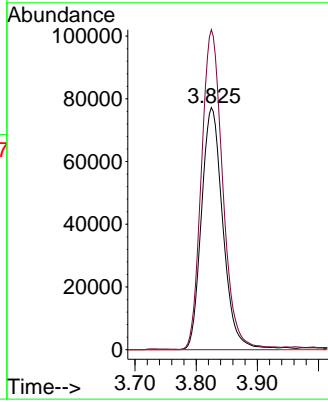
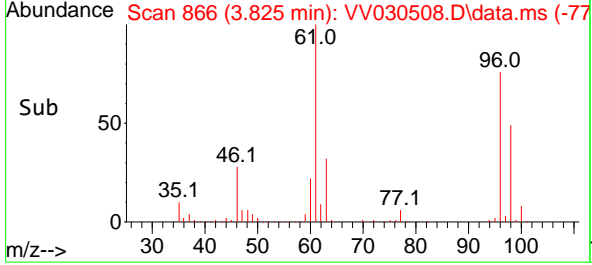


#22
 cis-1,2-Dichloroethene
 Concen: 16.460 ug/L
 RT: 3.825 min Scan# 80
 Delta R.T. -0.000 min
 Lab File: VV030508.D
 Acq: 11 Apr 2023 20:42

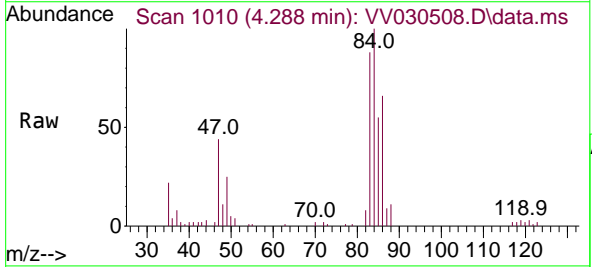
Instrument : MSVOA_V
 ClientSampleId : BHD6



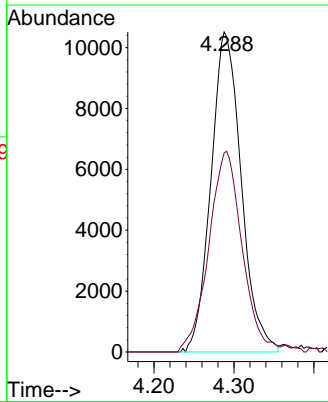
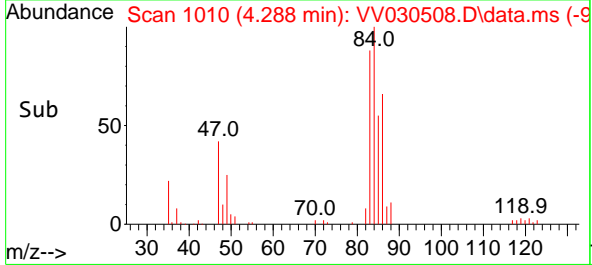
Tgt Ion: 96 Resp: 187687
 Ion Ratio Lower Upper
 96 100
 61 132.2 92.0 170.8
 68 0.0 0.0 0.0

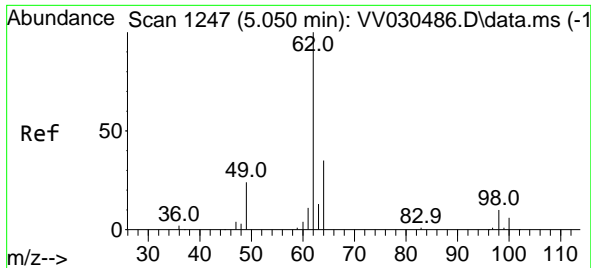


#25
 Chloroform
 Concen: 1.243 ug/L
 RT: 4.288 min Scan# 1010
 Delta R.T. 0.003 min
 Lab File: VV030508.D
 Acq: 11 Apr 2023 20:42



Tgt Ion: 83 Resp: 27668
 Ion Ratio Lower Upper
 83 100
 85 62.2 47.6 88.4

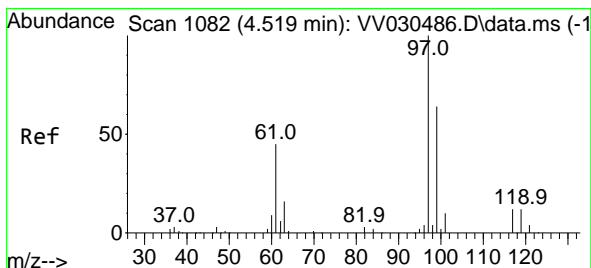
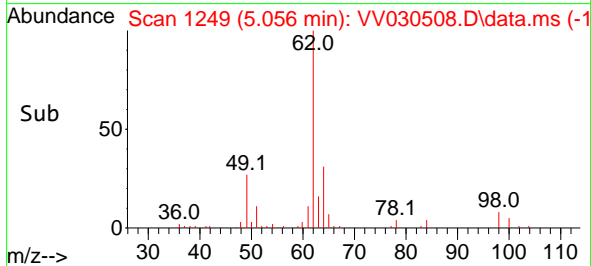
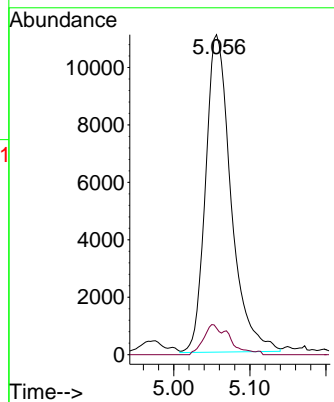
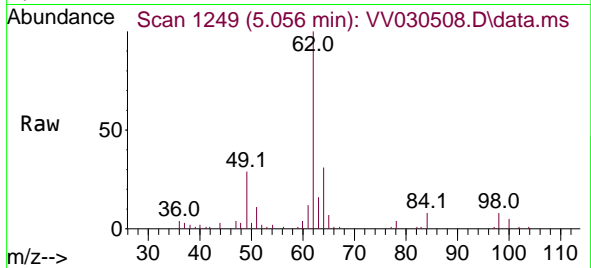




#27
 1,2-Dichloroethane
 Concen: 1.905 ug/L
 RT: 5.056 min Scan# 11
 Delta R.T. 0.006 min
 Lab File: VV030508.D
 Acq: 11 Apr 2023 20:42

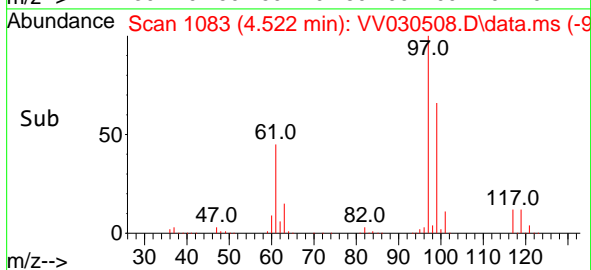
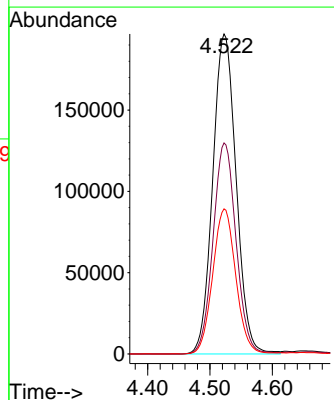
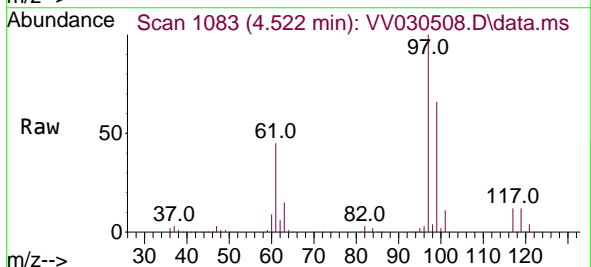
Instrument : MSVOA_V
 ClientSampleId : BHD6

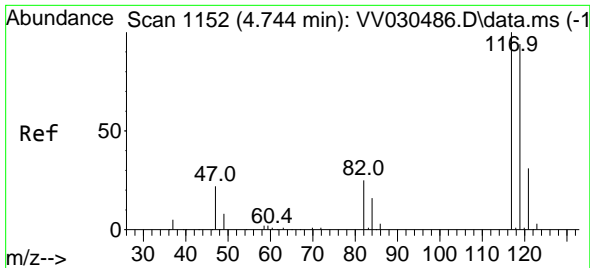
Tgt Ion: 62 Resp: 25640
 Ion Ratio Lower Upper
 62 100
 98 8.3 7.8 11.8



#29
 1,1,1-Trichloroethane
 Concen: 25.538 ug/L
 RT: 4.522 min Scan# 1083
 Delta R.T. 0.003 min
 Lab File: VV030508.D
 Acq: 11 Apr 2023 20:42

Tgt Ion: 97 Resp: 513120
 Ion Ratio Lower Upper
 97 100
 99 64.9 50.9 76.3
 61 44.7 35.9 53.9

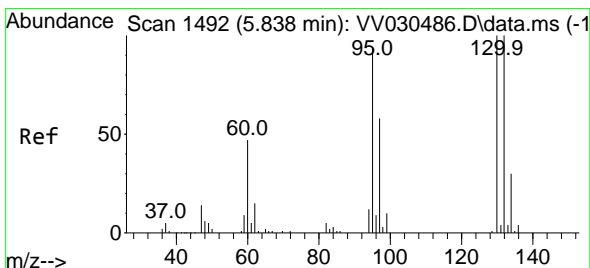
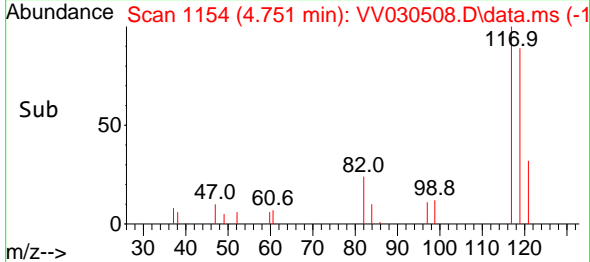
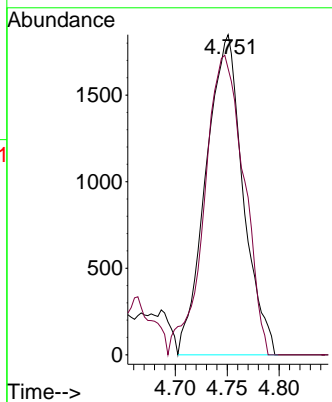
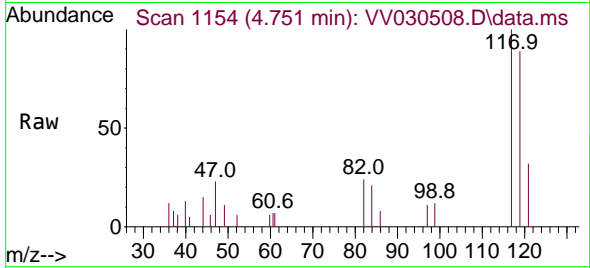




#31
 Carbon tetrachloride
 Concen: 0.251 ug/L
 RT: 4.751 min Scan# 1154
 Delta R.T. 0.006 min
 Lab File: VV030508.D
 Acq: 11 Apr 2023 20:42

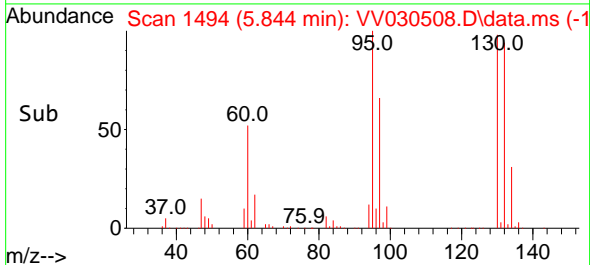
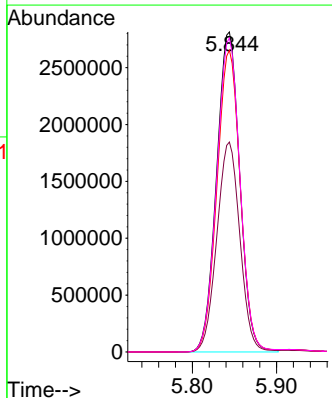
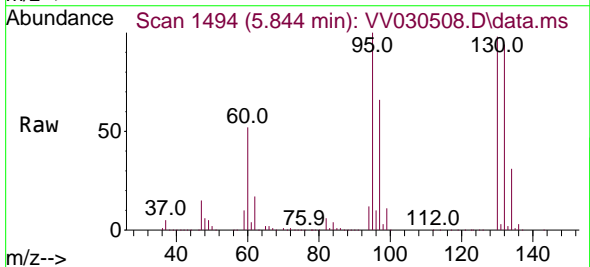
Instrument : MSVOA_V
 ClientSampleId : BHDx6

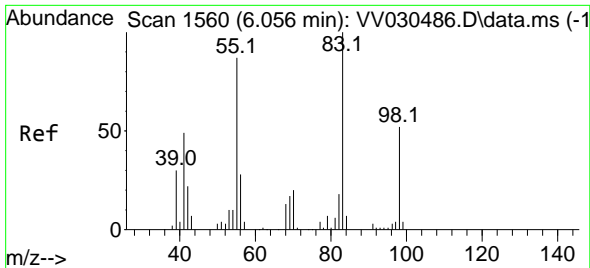
Tgt Ion:117 Resp: 4575
 Ion Ratio Lower Upper
 117 100
 119 99.5 76.2 114.4



#34
 Trichloroethene
 Concen: 449.348 ug/L
 RT: 5.844 min Scan# 1494
 Delta R.T. 0.006 min
 Lab File: VV030508.D
 Acq: 11 Apr 2023 20:42

Tgt Ion: 95 Resp: 5380841
 Ion Ratio Lower Upper
 95 100
 97 65.6 44.2 82.2
 132 94.3 69.5 129.1
 130 98.1 72.2 134.0

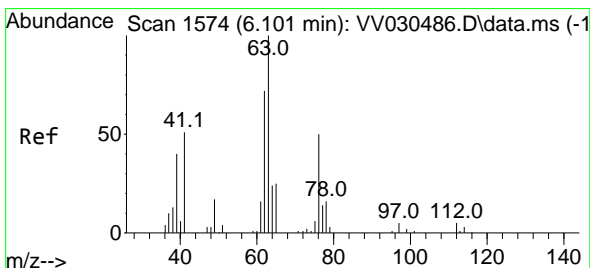
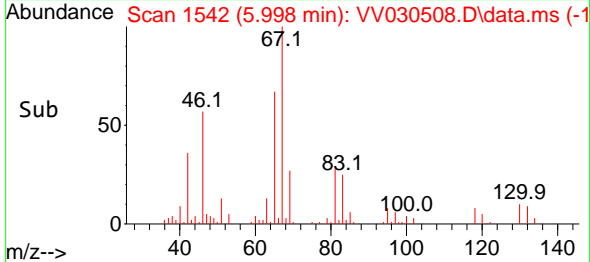
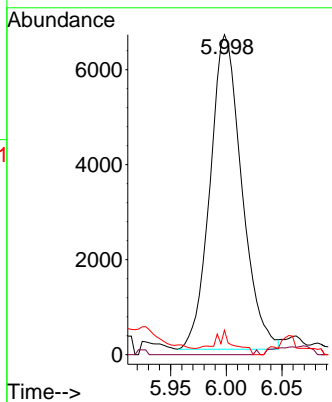
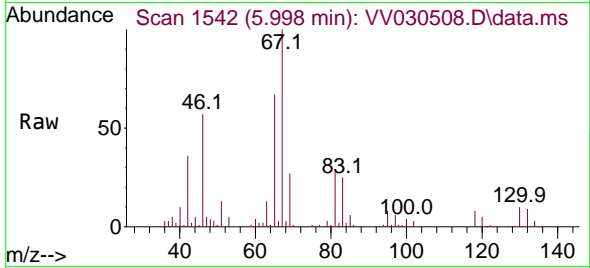




#35
 Methylcyclohexane
 Concen: 0.697 ug/L
 RT: 5.998 min Scan# 1542
 Delta R.T. -0.058 min
 Lab File: VV030508.D
 Acq: 11 Apr 2023 20:42

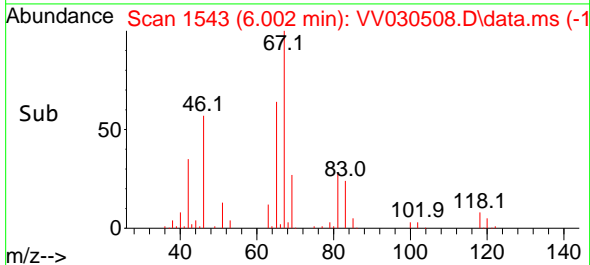
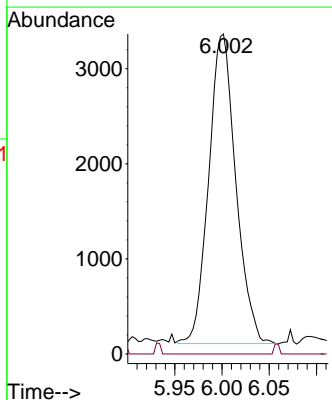
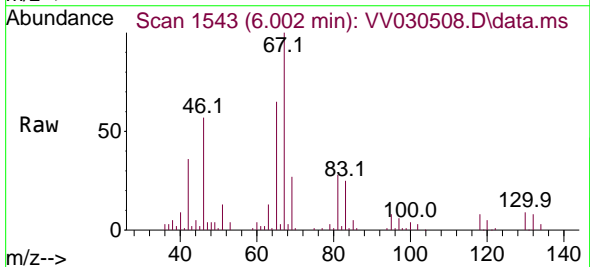
Instrument : MSVOA_V
 ClientSampleId : BHD6

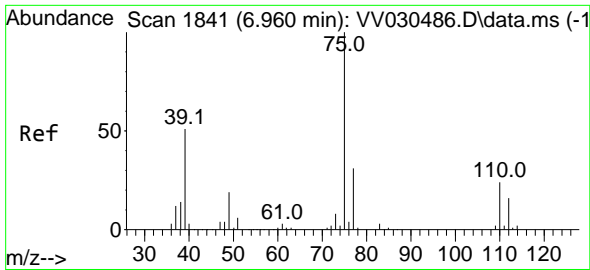
Tgt Ion: 83 Resp: 13104
 Ion Ratio Lower Upper
 83 100
 55 0.1 66.6 100.0#
 98 0.0 38.6 58.0#



#37
 1,2-Dichloropropane
 Concen: 0.570 ug/L
 RT: 6.002 min Scan# 1543
 Delta R.T. -0.100 min
 Lab File: VV030508.D
 Acq: 11 Apr 2023 20:42

Tgt Ion: 63 Resp: 6493
 Ion Ratio Lower Upper
 63 100
 112 0.6 3.9 5.9#

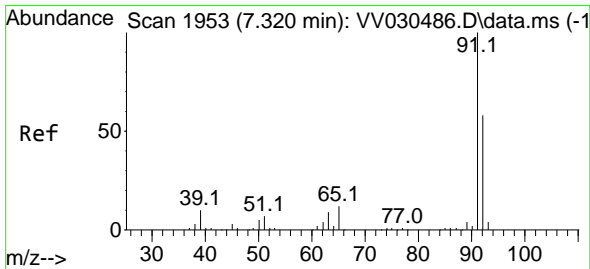
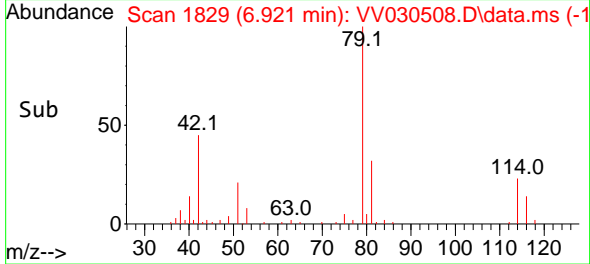
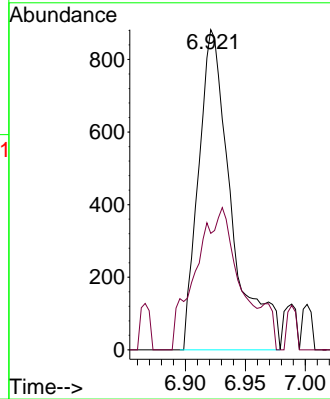
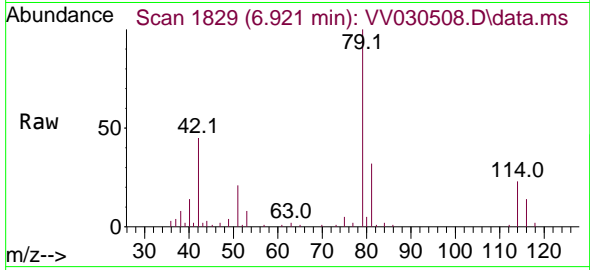




#39
 cis-1,3-Dichloropropene
 Concen: 0.105 ug/L
 RT: 6.921 min Scan# 1829
 Delta R.T. -0.039 min
 Lab File: VV030508.D
 Acq: 11 Apr 2023 20:42

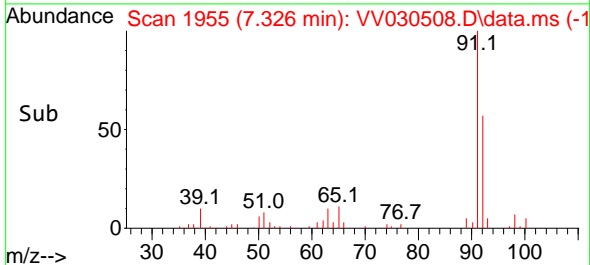
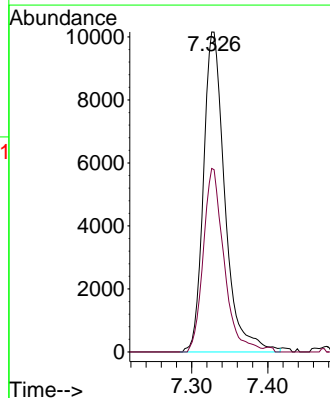
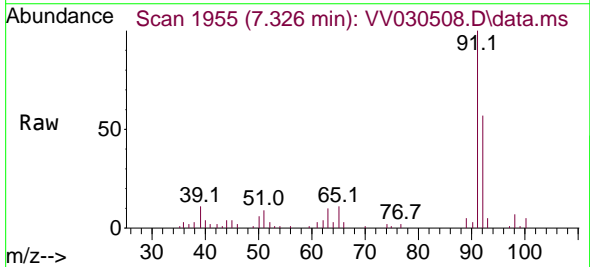
Instrument : MSVOA_V
 ClientSampleId : BHD6

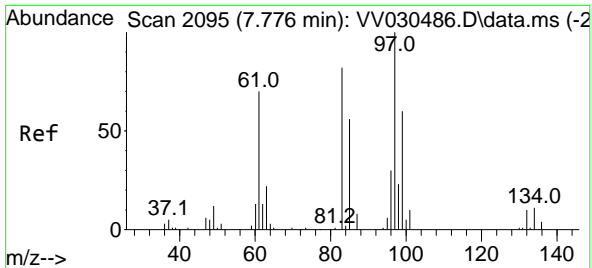
Tgt Ion: 75 Resp: 1686
 Ion Ratio Lower Upper
 75 100
 77 36.4 22.0 41.0



#42
 Toluene
 Concen: 0.420 ug/L
 RT: 7.326 min Scan# 1955
 Delta R.T. 0.006 min
 Lab File: VV030508.D
 Acq: 11 Apr 2023 20:42

Tgt Ion: 91 Resp: 19862
 Ion Ratio Lower Upper
 91 100
 92 57.3 40.4 75.0



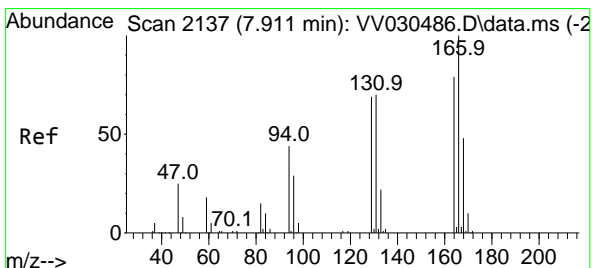
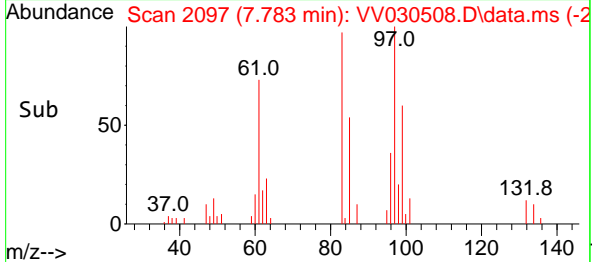
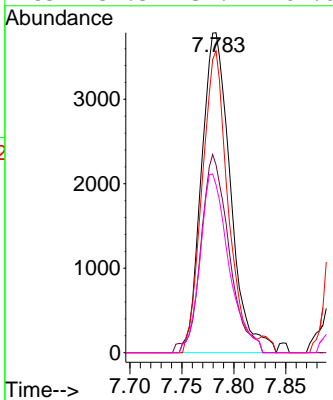
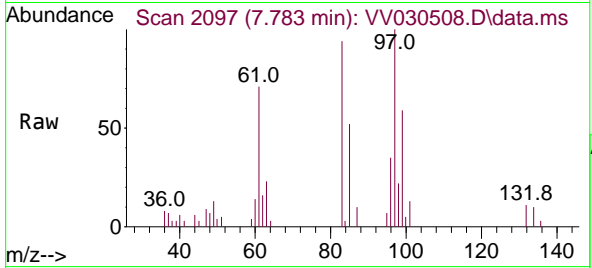


#45
 1,1,2-Trichloroethane
 Concen: 0.915 ug/L
 RT: 7.783 min Scan# 2097
 Delta R.T. 0.006 min
 Lab File: VV030508.D
 Acq: 11 Apr 2023 20:42

Instrument : MSVOA_V
 ClientSampleId : BHD6

Tgt Ion: 97 Resp: 7341

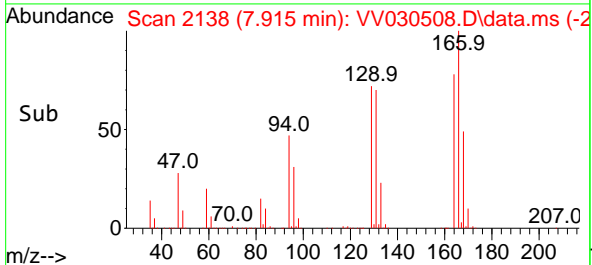
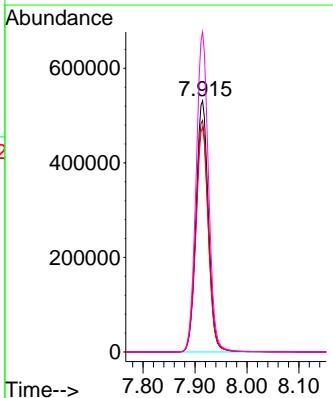
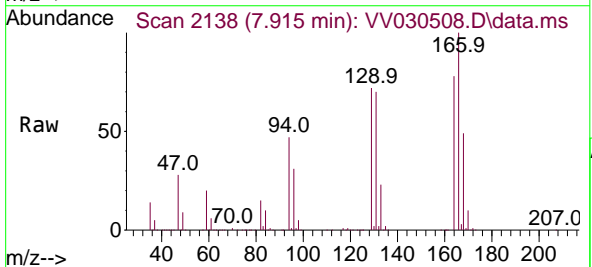
Ion	Ratio	Lower	Upper
97	100		
99	58.7	44.0	81.8
83	94.3	58.8	109.2
85	52.5	37.2	69.0

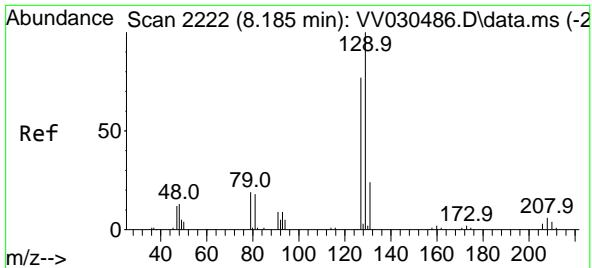


#47
 Tetrachloroethene
 Concen: 83.999 ug/L
 RT: 7.915 min Scan# 2138
 Delta R.T. 0.003 min
 Lab File: VV030508.D
 Acq: 11 Apr 2023 20:42

Tgt Ion: 164 Resp: 887732

Ion	Ratio	Lower	Upper
164	100		
129	92.2	60.8	112.8
131	89.6	61.7	114.7
166	127.4	85.6	159.0

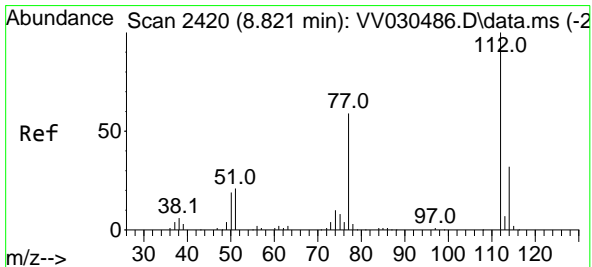
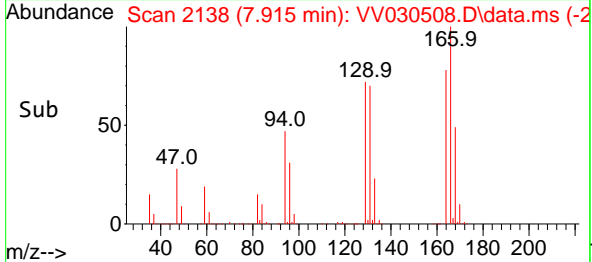
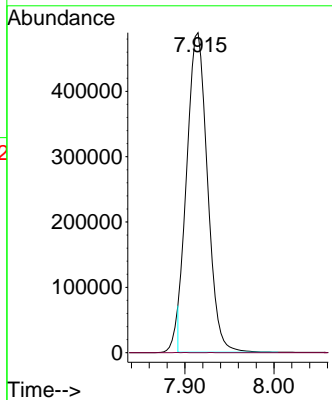
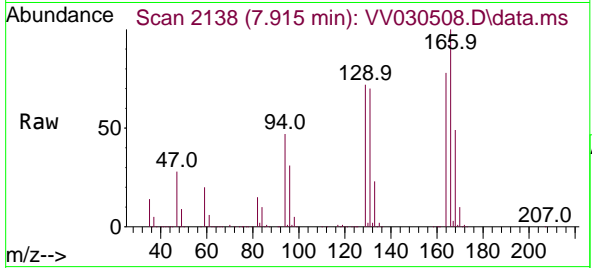




#49
 Dibromochloromethane
 Concen: 81.925 ug/L
 RT: 7.915 min Scan# 2138
 Delta R.T. -0.270 min
 Lab File: VV030508.D
 Acq: 11 Apr 2023 20:42

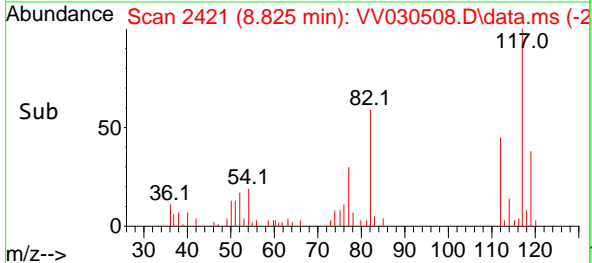
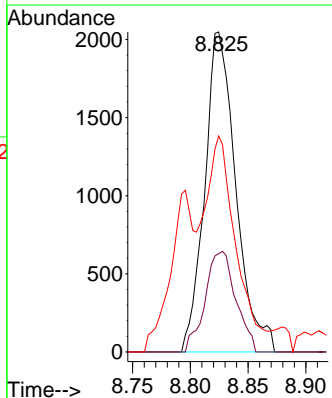
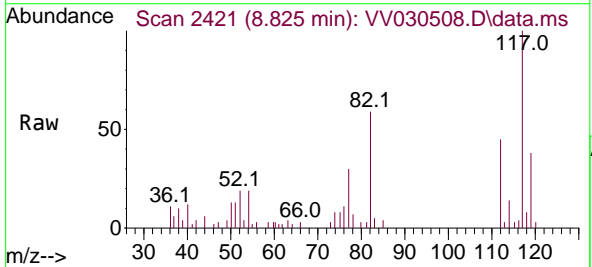
Instrument : MSVOA_V
 ClientSampleId : BHD6

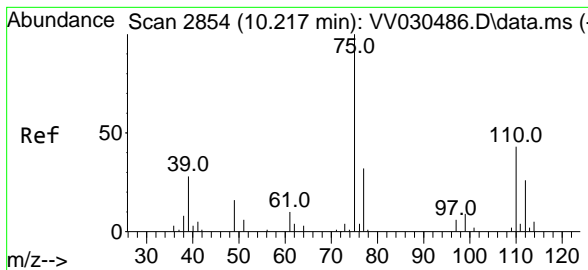
Tgt Ion:129 Resp: 782697
 Ion Ratio Lower Upper
 129 100
 127 0.0 52.7 97.9#



#51
 Chlorobenzene
 Concen: 0.127 ug/L
 RT: 8.825 min Scan# 2421
 Delta R.T. 0.003 min
 Lab File: VV030508.D
 Acq: 11 Apr 2023 20:42

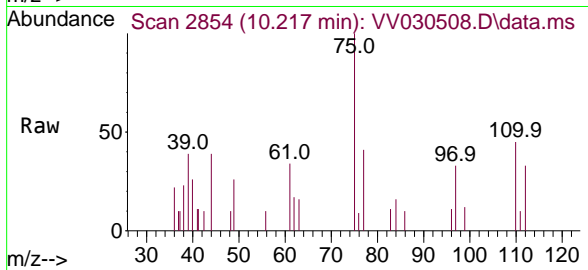
Tgt Ion:112 Resp: 3853
 Ion Ratio Lower Upper
 112 100
 114 30.7 22.4 41.6
 77 67.5 45.9 68.9



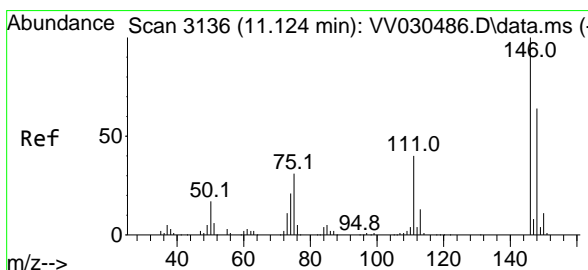
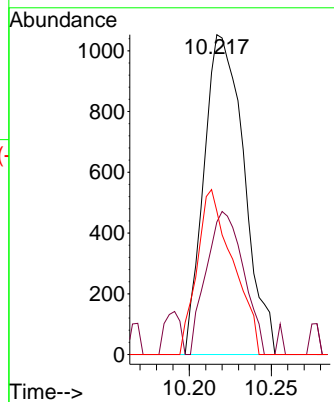
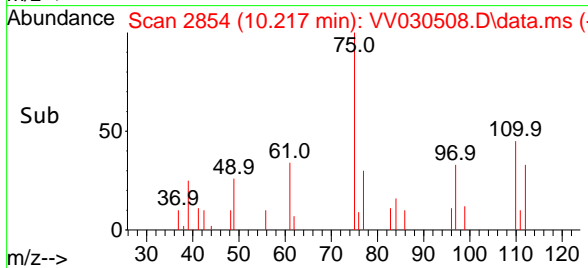


#61
 1,2,3-Trichloropropane
 Concen: 0.325 ug/L
 RT: 10.217 min Scan# 21
 Delta R.T. -0.000 min
 Lab File: VV030508.D
 Acq: 11 Apr 2023 20:42

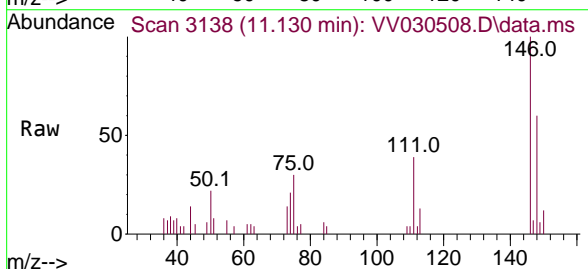
Instrument :
 MSVOA_V
 ClientSampleId :
 BHD6



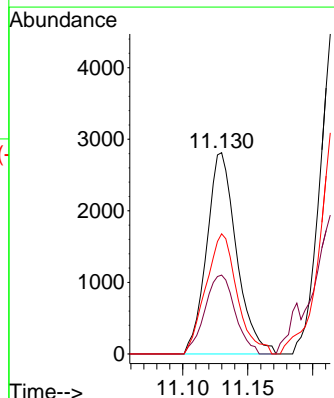
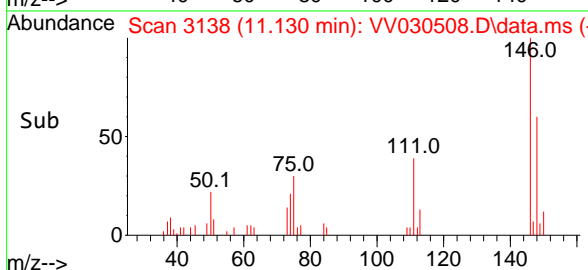
Tgt Ion: 75 Resp: 1788
 Ion Ratio Lower Upper
 75 100
 77 41.7 26.0 39.0#
 110 46.2 31.6 47.4

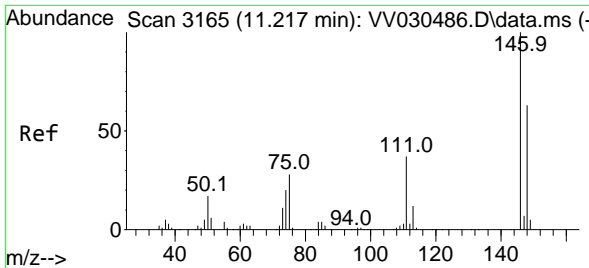


#64
 1,3-Dichlorobenzene
 Concen: 0.198 ug/L
 RT: 11.130 min Scan# 3138
 Delta R.T. 0.006 min
 Lab File: VV030508.D
 Acq: 11 Apr 2023 20:42



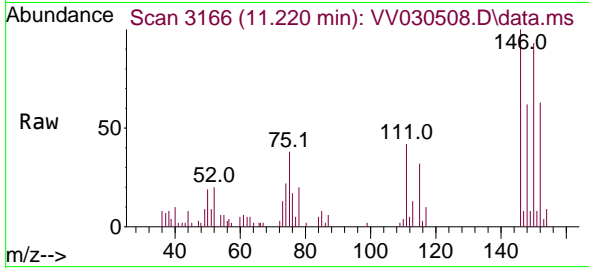
Tgt Ion: 146 Resp: 4477
 Ion Ratio Lower Upper
 146 100
 111 39.2 27.0 50.2
 148 59.7 44.2 82.2



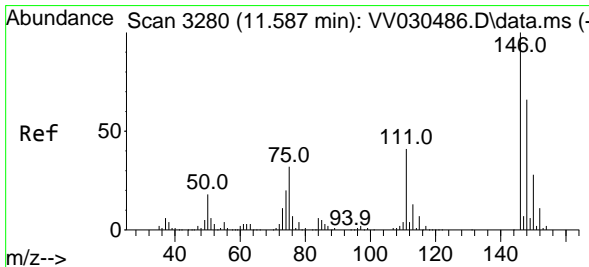
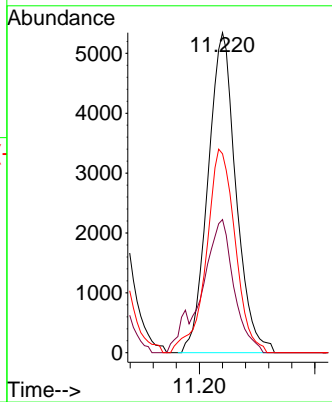
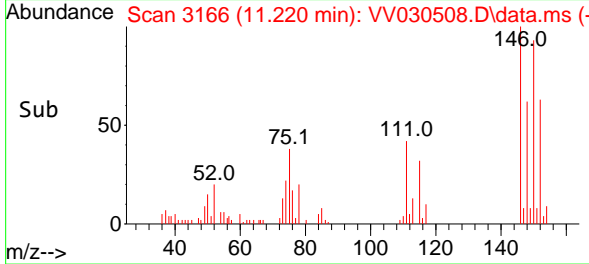


#65
 1,4-Dichlorobenzene
 Concen: 0.395 ug/L
 RT: 11.220 min Scan# 3166
 Delta R.T. 0.003 min
 Lab File: VV030508.D
 Acq: 11 Apr 2023 20:42

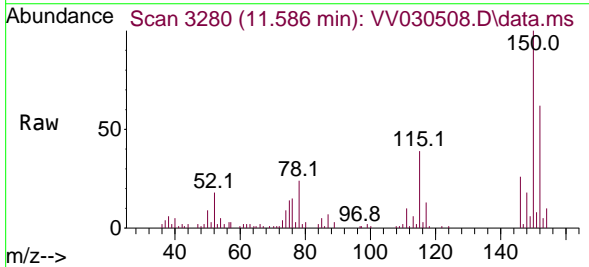
Instrument : MSVOA_V
 ClientSampleId : BHD6



Tgt Ion:146 Resp: 9007
 Ion Ratio Lower Upper
 146 100
 111 41.6 26.0 48.4
 148 62.2 45.2 84.0



#67
 1,2-Dichlorobenzene
 Concen: 0.342 ug/L
 RT: 11.586 min Scan# 3280
 Delta R.T. -0.000 min
 Lab File: VV030508.D
 Acq: 11 Apr 2023 20:42



Tgt Ion:146 Resp: 6962
 Ion Ratio Lower Upper
 146 100
 111 38.2 33.1 49.7
 148 66.9 52.2 78.2

