

Data Path : Z:\voasrv\HPCHEM1\MSVOA_V\Data\VV041123\
 Data File : VV030499.D
 Acq On : 11 Apr 2023 17:01
 Operator : SY/MD
 Sample : 02275-02
 Misc : 25.0mL/MSVOA_V/WATER
 ALS Vial : 16 Sample Multiplier: 1

Instrument :
 MSVOA_V
 ClientSampleId :
 BHDY8

Integration Parameters: rteint.p
 Integrator: RTE
 Smoothing : ON Filtering: 5
 Sampling : 1 Min Area: 3 % of largest Peak
 Start Thrs: 0.1 Max Peaks: 100
 Stop Thrs : 0 Peak Location: TOP

If leading or trailing edge < 100 prefer < Baseline drop else tangent >
 Peak separation: 5

Method : Z:\voasrv\HPCHEM1\MSVOA_V\Method\SFAMVTR032323WMA.M
 Title : TRACE VOA SFAM1.0

Signal : TIC: VV030499.D\data.ms

peak #	R.T. min	first scan	max scan	last scan	PK TY	peak height	corr. area	corr. % max.	% of total
1	1.281	68	75	90	rVB	36414	43321	10.79%	1.238%
2	1.535	147	154	168	rVB	46261	56632	14.11%	1.618%
3	2.063	307	318	332	rBV	88124	129631	32.30%	3.703%
4	3.831	852	868	903	rBV2	33368	154765	38.56%	4.421%
5	4.262	984	1002	1022	rBV	73896	194782	48.53%	5.564%
6	4.966	1204	1221	1245	rBV3	152169	401384	100.00%	11.466%
7	5.542	1388	1400	1424	rBV	124062	263571	65.67%	7.529%
8	5.998	1529	1542	1561	rBV	94349	202084	50.35%	5.773%
9	6.924	1818	1830	1850	rBV	38311	76436	19.04%	2.184%
10	7.252	1918	1932	1946	rBV	162659	295064	73.51%	8.429%
11	7.326	1947	1955	1976	rVB	28044	57588	14.35%	1.645%
12	7.564	2019	2029	2047	rBV2	24441	49751	12.39%	1.421%
13	7.889	2116	2130	2147	rVB2	9574	20203	5.03%	0.577%
14	8.037	2165	2176	2207	rBV	179517	389698	97.09%	11.132%
15	8.792	2399	2411	2434	rBV	192386	332744	82.90%	9.505%
16	9.506	2620	2633	2641	rBV6	4483	8976	2.24%	0.256%
17	10.162	2823	2837	2853	rBV2	75850	125592	31.29%	3.588%
18	10.332	2878	2890	2905	rVB	27067	46970	11.70%	1.342%
19	11.194	3146	3158	3173	rBV	193066	308438	76.84%	8.811%
20	11.503	3247	3254	3263	rBV8	3143	4714	1.17%	0.135%
21	11.570	3263	3275	3292	rVB	180310	292525	72.88%	8.356%
22	12.204	3464	3472	3485	rVB	6973	11812	2.94%	0.337%
23	12.297	3492	3501	3512	rBV4	16052	24028	5.99%	0.686%
24	12.622	3596	3602	3610	rVB7	4280	5762	1.44%	0.165%
25	13.998	4021	4030	4037	rVB2	2659	4118	1.03%	0.118%

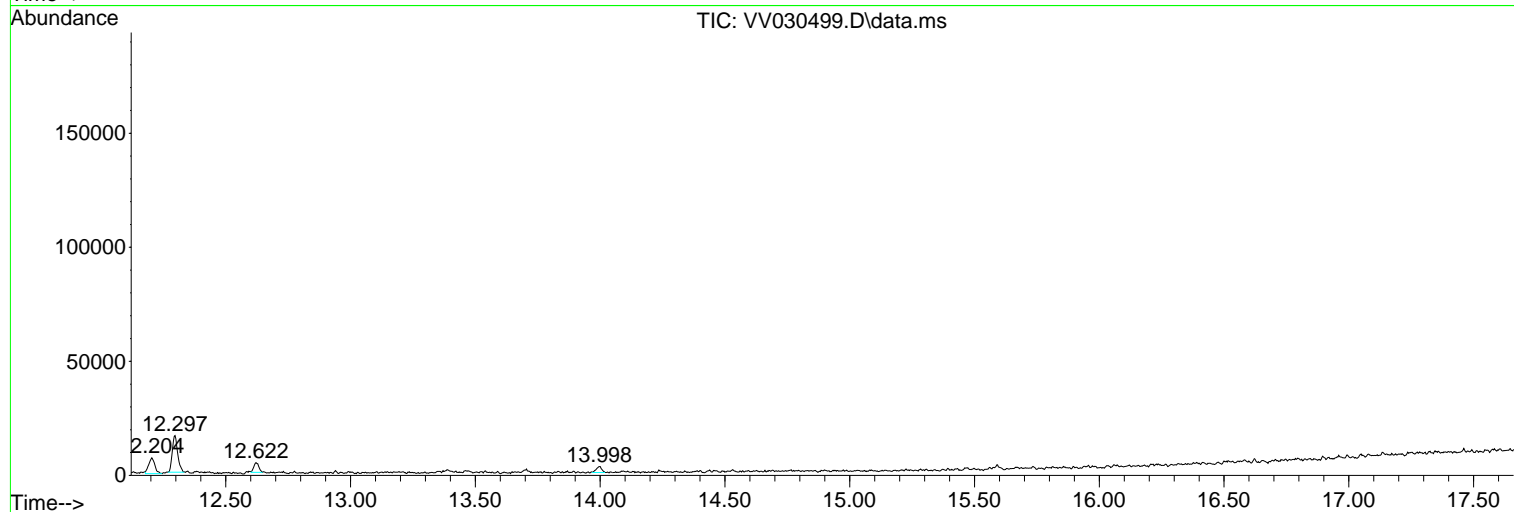
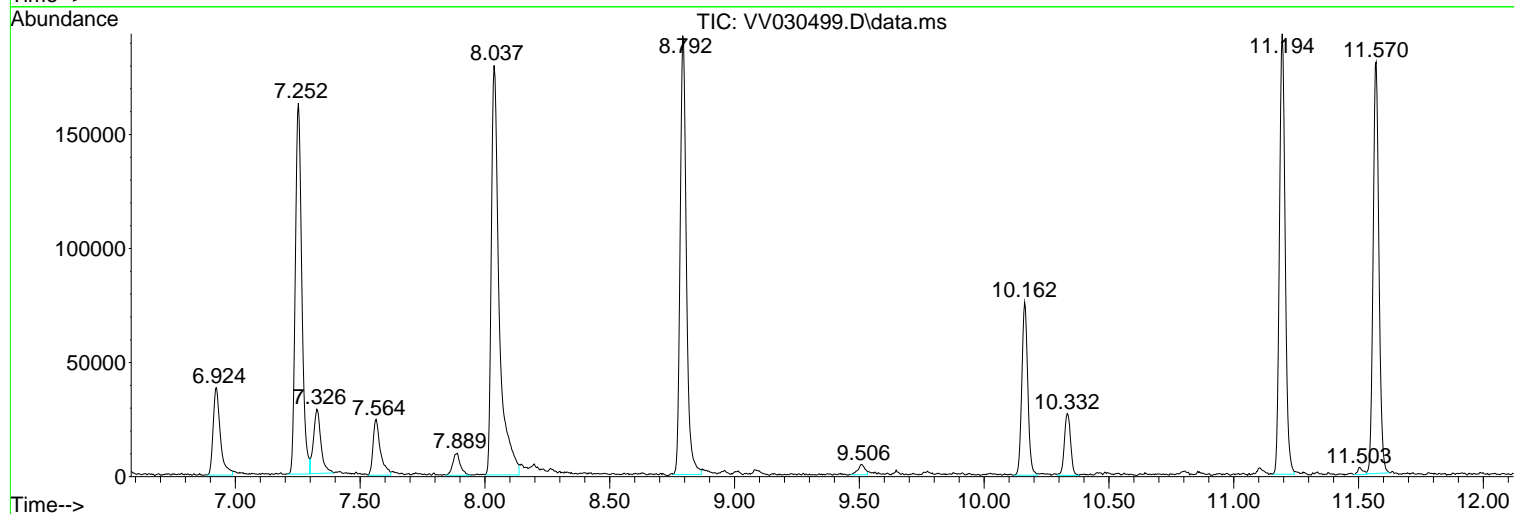
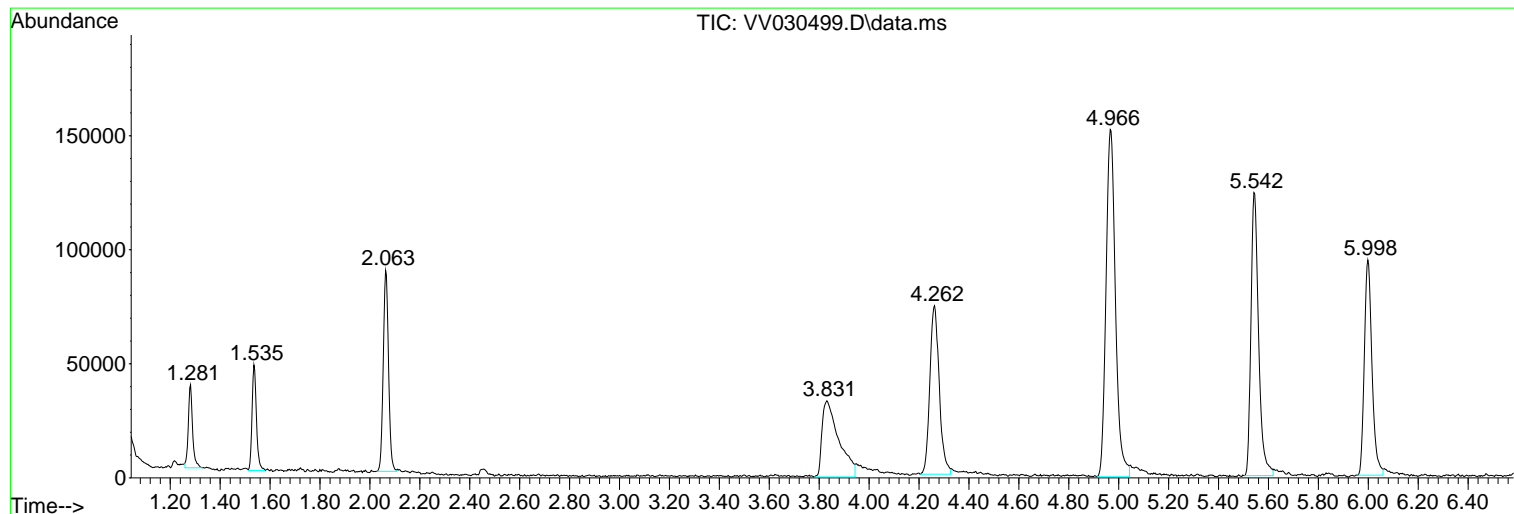
Sum of corrected areas: 3500589

Data Path : Z:\voasrv\HPCHEM1\MSVOA_V\Data\VV041123\
Data File : VV030499.D
Acq On : 11 Apr 2023 17:01
Operator : SY/MD
Sample : 02275-02
Misc : 25.0mL/MSVOA_V/WATER
ALS Vial : 16 Sample Multiplier: 1

Instrument :
MSVOA_V
ClientSampleId :
BHDY8

Quant Method : Z:\voasrv\HPCHEM1\MSVOA_V\Method\SFAMVTR032323WMA.M
Quant Title : TRACE VOA SFAM1.0

TIC Library : C:\Database\NIST20.L
TIC Integration Parameters: LSCINT.P



Data Path : Z:\voasrv\HPCHEM1\MSVOA_V\Data\VV041123\
Data File : VV030499.D
Acq On : 11 Apr 2023 17:01
Operator : SY/MD
Sample : 02275-02
Misc : 25.0mL/MSVOA_V/WATER
ALS Vial : 16 Sample Multiplier: 1

Instrument :
MSVOA_V
ClientSampleId :
BHDY8

Quant Method : Z:\voasrv\HPCHEM1\MSVOA_V\Method\SFAMVTR032323WMA.M
Quant Title : TRACE VOA SFAM1.0

TIC Library : C:\Database\NIST20.L
TIC Integration Parameters: LSCINT.P

No Library Search Compounds Detected

Data Path : Z:\voasrv\HPCHEM1\MSVOA_V\Data\VV041123\
Data File : VV030499.D
Acq On : 11 Apr 2023 17:01
Operator : SY/MD
Sample : 02275-02
Misc : 25.0mL/MSVOA_V/WATER
ALS Vial : 16 Sample Multiplier: 1

Instrument :
MSVOA_V
ClientSampleId :
BHDY8

Quant Method : Z:\voasrv\HPCHEM1\MSVOA_V\Method\SFAMVTR032323WMA.M
Quant Title : TRACE VOA SFAM1.0

TIC Library : C:\Database\NIST0.L
TIC Integration Parameters: LSCINT.P

TIC Top Hit name	RT	EstConc	Units	Response	--Internal Standard--			
					#	RT	Resp	Conc
