

Data Path : Z:\voasrv\HPCHEM1\MSVOA_V\Data\VV041124\
 Data File : VV035143.D
 Acq On : 11 Apr 2024 23:42
 Operator : SY/MD
 Sample : VV0411WBL02
 Misc : 25.0mL/MSVOA_V/WATER
 ALS Vial : 21 Sample Multiplier: 1

Instrument :
 MSVOA_V
 ClientSampleId :

Quant Time: Apr 12 02:02:57 2024
 Quant Method : Z:\voasrv\HPCHEM1\MSVOA_V\Method\SFAMVTR040224WMA.M
 Quant Title : TRACE VOA SFAM1.0
 QLast Update : Fri Apr 12 02:02:37 2024
 Response via : Initial Calibration

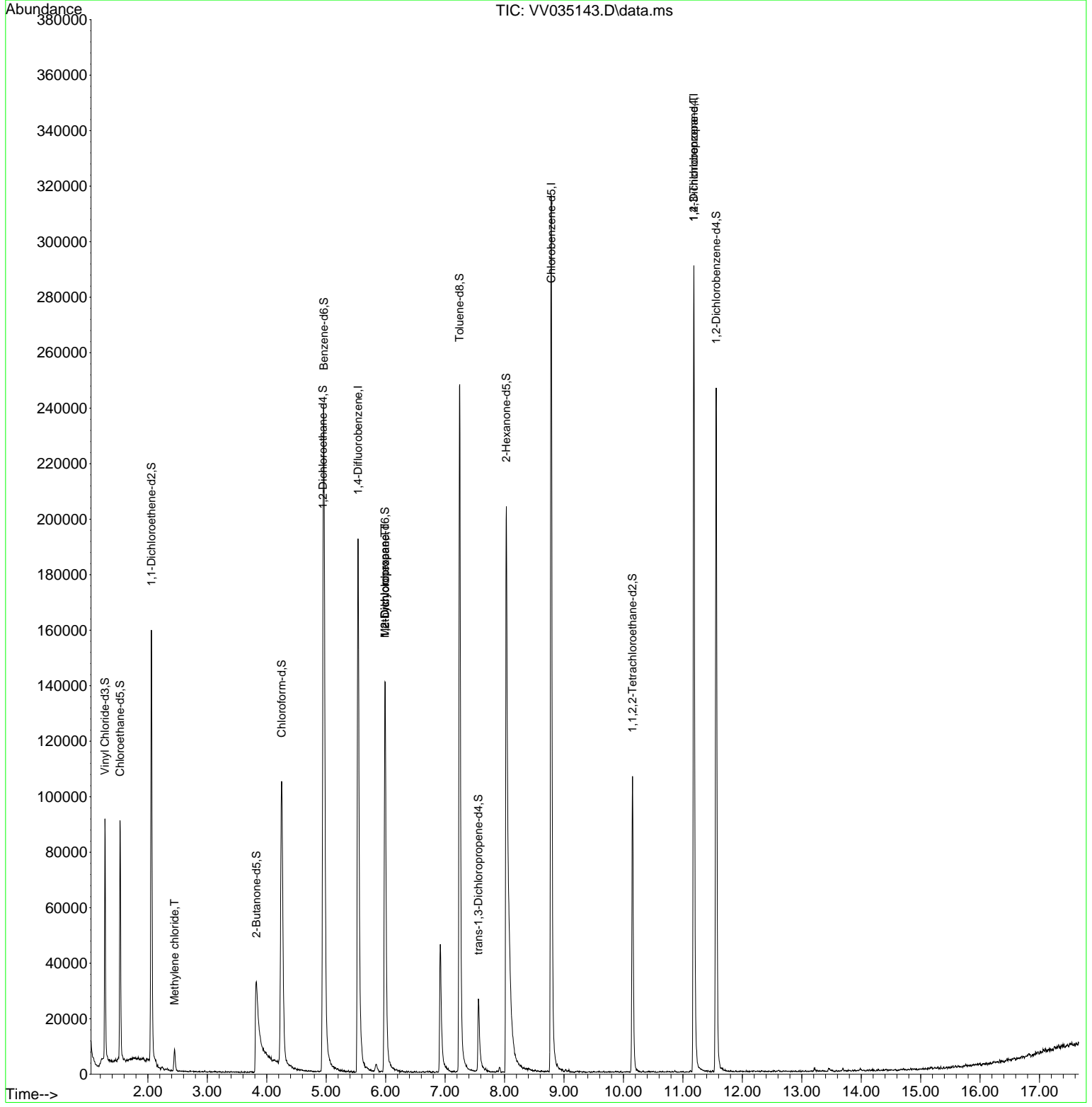
Compound	R.T.	QI on	Response	Conc	Units	Dev(Min)
Internal Standards						
1) 1,4-Difluorobenzene	5.535	114	172983	5.000	ug/L	0.00
28) Chlorobenzene-d5	8.786	117	176419	5.000	ug/L	0.00
58) 1,4-Dichlorobenzene-d4	11.185	152	77425	5.000	ug/L	0.00
System Monitoring Compounds						
4) Vinyl chloride-d3	1.278	65	55088	3.864	ug/L	0.00
Spike Amount	5.000	Range	40 - 130	Recovery	=	77.200%
7) Chloroethane-d5	1.532	69	55277	4.703	ug/L	0.00
Spike Amount	5.000	Range	65 - 130	Recovery	=	94.000%
11) 1,1-Dichloroethane-d2	2.060	65	26851	4.147	ug/L	0.00
Spike Amount	5.000	Range	60 - 125	Recovery	=	83.000%
20) 2-Butanone-d5	3.825	46	81095	36.356	ug/L	0.00
Spike Amount	50.000	Range	40 - 130	Recovery	=	72.720%
24) Chloroform-d	4.249	84	116288	5.041	ug/L	0.00
Spike Amount	5.000	Range	70 - 125	Recovery	=	100.800%
26) 1,2-Dichloroethane-d4	4.947	65	59365	5.699	ug/L	0.00
Spike Amount	5.000	Range	70 - 130	Recovery	=	114.000%
32) Benzene-d6	4.960	84	225159	4.879	ug/L	0.00
Spike Amount	5.000	Range	70 - 125	Recovery	=	97.600%
36) 1,2-Dichloropropane-d6	5.989	67	74514	5.501	ug/L	0.00
Spike Amount	5.000	Range	60 - 140	Recovery	=	110.000%
41) Toluene-d8	7.243	98	180599	4.308	ug/L	0.00
Spike Amount	5.000	Range	70 - 130	Recovery	=	86.200%
43) trans-1,3-Dichloropropene	7.561	79	19342	4.020	ug/L	0.00
Spike Amount	5.000	Range	55 - 130	Recovery	=	80.400%
46) 2-Hexanone-d5	8.030	63	93807	56.805	ug/L	0.00
Spike Amount	50.000	Range	45 - 130	Recovery	=	113.600%
56) 1,1,2,2-Tetrachloroethane	10.153	84	54000	5.714	ug/L	0.00
Spike Amount	5.000	Range	65 - 120	Recovery	=	114.200%
66) 1,2-Dichlorobenzene-d4	11.561	152	64416	5.282	ug/L	0.00
Spike Amount	5.000	Range	80 - 120	Recovery	=	105.600%
Target Compounds						
16) Methylene chloride	2.449	84	3160	0.219	ug/L	96
35) Methylcyclohexane	5.989	83	17379	0.811	ug/L #	19
37) 1,2-Dichloropropane	5.989	63	8131	0.581	ug/L #	88
61) 1,2,3-Trichloropropane	11.185	75	9752	1.349	ug/L #	66

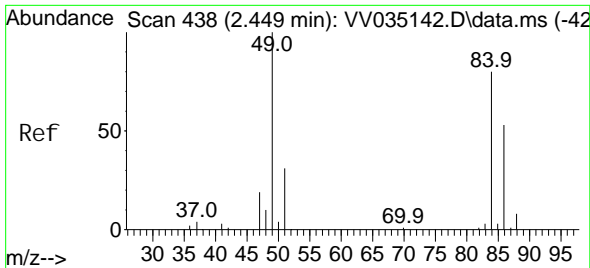
(#) = qualifier out of range (m) = manual integration (+) = signals summed

Data Path : Z:\voasrv\HPCHEM1\MSVOA_V\Data\VV041124\
 Data File : VV035143.D
 Acq On : 11 Apr 2024 23:42
 Operator : SY/MD
 Sample : VV0411WBL02
 Misc : 25.0mL/MSVOA_V/WATER
 ALS Vial : 21 Sample Multiplier: 1

Instrument :
 MSVOA_V
ClientSampleId :

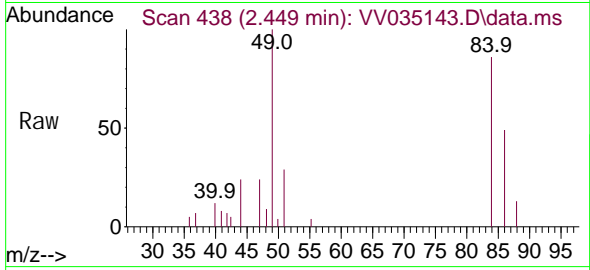
Quant Time: Apr 12 02:02:57 2024
 Quant Method : Z:\voasrv\HPCHEM1\MSVOA_V\Method\SFAMVTR040224WMA.M
 Quant Title : TRACE VOA SFAM1.0
 QLast Update : Fri Apr 12 02:02:37 2024
 Response via : Initial Calibration



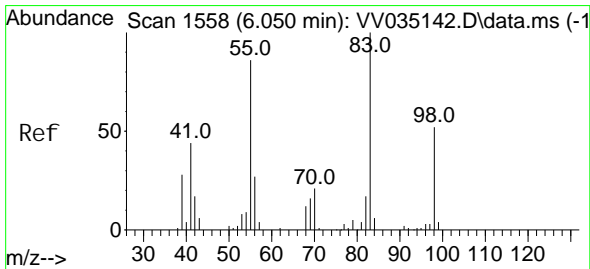
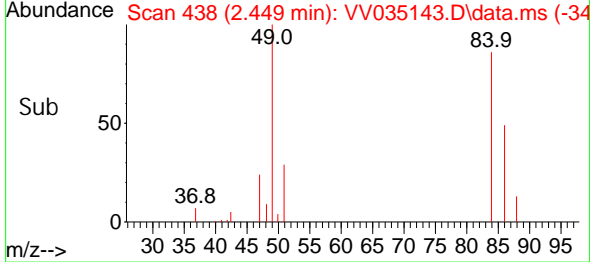
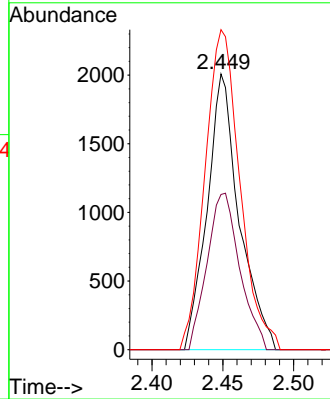


#16
 Methylene chloride
 Concen: 0.219 ug/L
 RT: 2.449 min Scan# 41
 Delta R.T. 0.000 min
 Lab File: VV035143.D
 Acq: 11 Apr 2024 23:42

Instrument : MSVOA_V
 ClientSampleId :

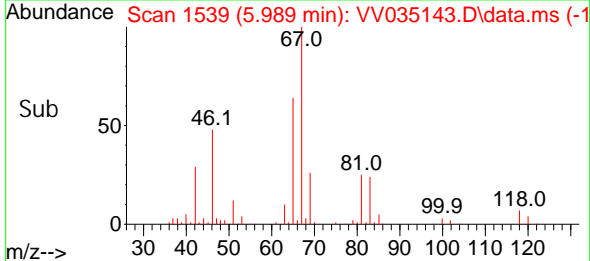
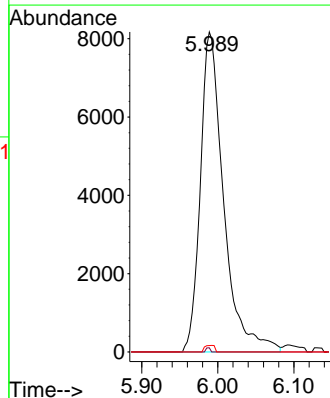
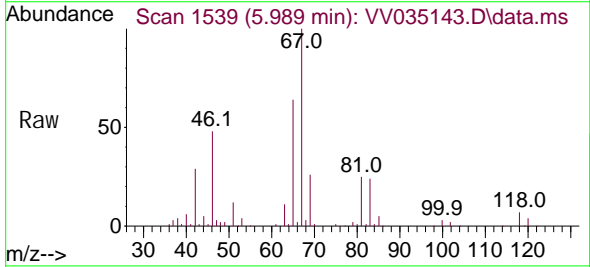


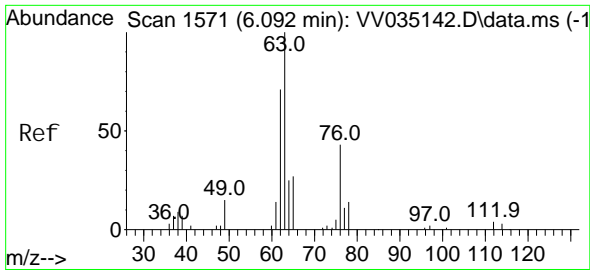
Tgt Ion:	84	Resp:	3160
Ion Ratio	Lower	Upper	
84	100		
86	56.3	43.5	80.9
49	116.1	82.5	153.3



#35
 Methyl cycl ohexane
 Concen: 0.811 ug/L
 RT: 5.989 min Scan# 1539
 Delta R.T. -0.061 min
 Lab File: VV035143.D
 Acq: 11 Apr 2024 23:42

Tgt Ion:	83	Resp:	17379
Ion Ratio	Lower	Upper	
83	100		
55	0.2	60.6	91.0#
98	0.9	37.8	56.6#

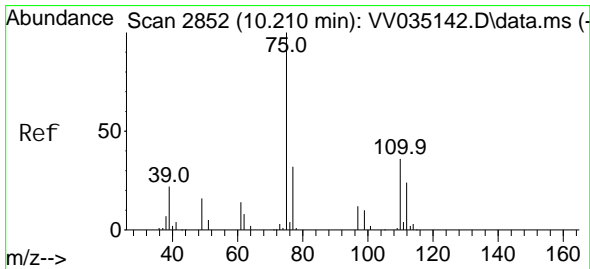
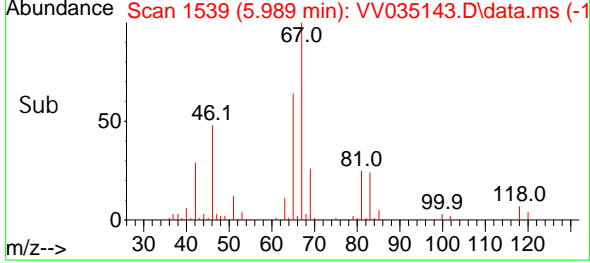
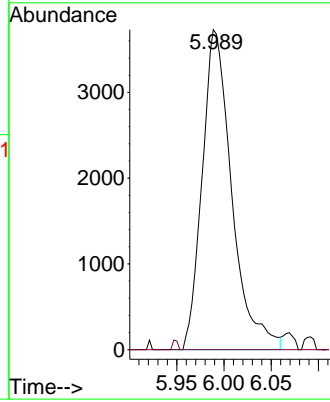
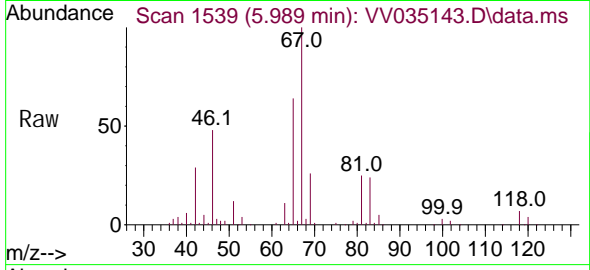




#37
 1, 2-Di chl oropropane
 Concen: 0.581 ug/L
 RT: 5.989 min Scan# 11
 Delta R.T. -0.103 min
 Lab File: VV035143.D
 Acq: 11 Apr 2024 23:42

Instrument : MSVOA_V
 ClientSampleId :

Tgt Ion: 63 Resp: 8131
 Ion Ratio Lower Upper
 63 100
 112 0.5 3.5 5.3#



#61
 1, 2, 3-Tri chl oropropane
 Concen: 1.349 ug/L
 RT: 11.185 min Scan# 3155
 Delta R.T. 0.974 min
 Lab File: VV035143.D
 Acq: 11 Apr 2024 23:42

Tgt Ion: 75 Resp: 9752
 Ion Ratio Lower Upper
 75 100
 77 32.6 24.8 37.2
 110 2.7 31.0 46.6#

