

Data File : VV010282.D
 Acq On : 12 Apr 2019 12:53
 Operator : SY/MD
 Sample : K2328-20MSD
 Misc : 4.84G/10mL/MSVOA_V/SOIL
 ALS Vial : 1 Sample Multiplier: 1

Instrument :
 MSVOA_V
 ClientSampleId :
 DB733MSD

Quant Time: Apr 13 04:50:45 2019
 Quant Method : Z:\VOASRV\HPCHEM1\MSVOA_V\METHOD\SOM2VLM041019S.M
 Quant Title : VOC Analysis
 QLast Update : Sat Apr 13 04:47:32 2019
 Response via : Initial Calibration

Internal Standards	R.T.	QIon	Response	Conc	Units	Dev(Min)
1) 1,4-Difluorobenzene	5.66	114	284087	25.00	ug/L	0.00
28) Chlorobenzene-d5	8.90	117	270338	25.00	ug/L	0.00
60) 1,4-Dichlorobenzene-d4	11.30	152	121475	25.00	ug/L	0.00

System Monitoring Compounds

4) Vinyl Chloride-d3	1.32	65	50926	15.57	ug/L	0.00
Spiked Amount	25.000	Range	30 - 150	Recovery	=	62.28%
7) Chloroethane-d5	1.57	69	58375	20.77	ug/L	0.00
Spiked Amount	25.000	Range	30 - 150	Recovery	=	83.08%
10) 1,1-Dichloroethene-d2	2.13	63	165634	19.90	ug/L	0.00
Spiked Amount	25.000	Range	45 - 110	Recovery	=	79.60%
20) 2-Butanone-d5	3.93	46	40375	48.79	ug/L	0.00
Spiked Amount	50.000	Range	20 - 135	Recovery	=	97.58%
24) Chloroform-d	4.40	84	144832	22.32	ug/L	0.00
Spiked Amount	25.000	Range	40 - 150	Recovery	=	89.28%
26) 1,2-Dichloroethane-d4	5.08	65	80422	21.77	ug/L	0.00
Spiked Amount	25.000	Range	70 - 130	Recovery	=	87.08%
29) Benzene-d6	5.10	84	275312	21.12	ug/L	0.00
Spiked Amount	25.000	Range	20 - 135	Recovery	=	84.48%
33) 1,2-Dichloropropane-d6	6.12	67	88354	22.79	ug/L	0.00
Spiked Amount	25.000	Range	70 - 120	Recovery	=	91.16%
37) Toluene-d8	7.36	98	261554	20.58	ug/L	0.00
Spiked Amount	25.000	Range	30 - 130	Recovery	=	82.32%
38) trans-1,3-Dichloropropene-	7.66	79	32347	20.01	ug/L	0.00
Spiked Amount	25.000	Range	30 - 135	Recovery	=	80.04%
39) 2-Hexanone-d5	8.13	63	28831	43.05	ug/L	0.00
Spiked Amount	50.000	Range	20 - 135	Recovery	=	86.10%
48) 1,1,2,2-Tetrachloroethane-	10.26	84	75866	21.80	ug/L	0.00
Spiked Amount	25.000	Range	45 - 120	Recovery	=	87.20%
61) 1,2-Dichlorobenzene-d4	11.67	152	102783	22.91	ug/L	0.00
Spiked Amount	25.000	Range	75 - 120	Recovery	=	91.64%

Target Compounds

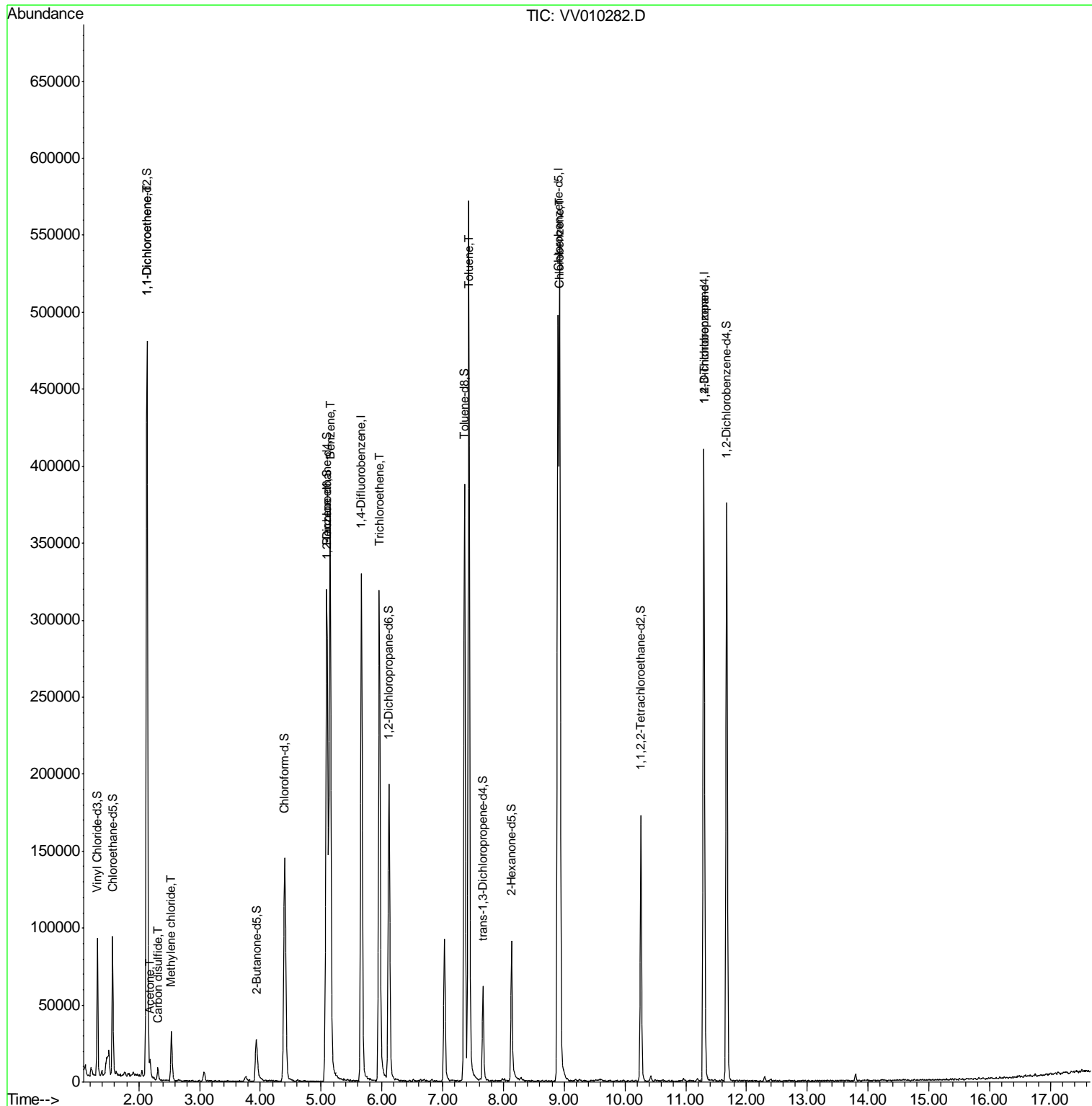
Target Compounds	R.T.	QIon	Response	Conc	Units	Qvalue
12) 1,1-Dichloroethene	2.14	96	96608	25.775	ug/L	91
13) Acetone	2.19	43	3959	4.477	ug/L	94
14) Carbon disulfide	2.32	76	5806	0.641	ug/L #	83
16) Methylene chloride	2.54	84	12961	2.330	ug/L	94
34) Benzene	5.15	78	363301	26.511	ug/L	100
35) Trichloroethene	5.96	95	104785	26.465	ug/L	98
44) Toluene	7.43	91	416564	27.040	ug/L	98
52) Chlorobenzene	8.93	112	285580	26.565	ug/L	99
59) 1,2,3-Trichloropropane	11.29	75	13904	5.374	ug/L #	77

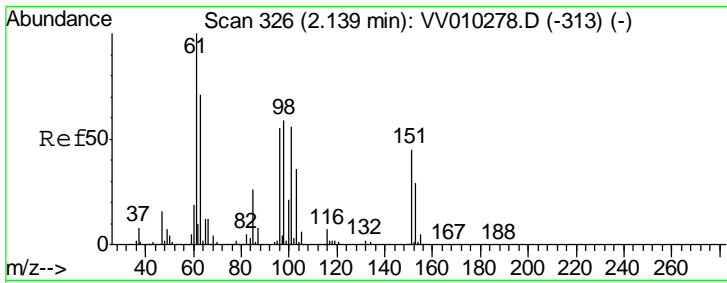
(#) = qualifier out of range (m) = manual integration (+) = signals summed

Data File : VV010282.D
Acq On : 12 Apr 2019 12:53
Operator : SY/MD
Sample : K2328-20MSD
Misc : 4.84G/10mL/MSVOA_V/SOIL
ALS Vial : 1 Sample Multiplier: 1

Instrument :
MSVOA_V
ClientSampled :
DB733MSD

Quant Time: Apr 13 04:50:45 2019
Quant Method : Z:\VOASRV\HPCHEM1\MSVOA_V\METHOD\SOM2VLM041019S.M
Quant Title : VOC Analysis
QLast Update : Sat Apr 13 04:47:32 2019
Response via : Initial Calibration

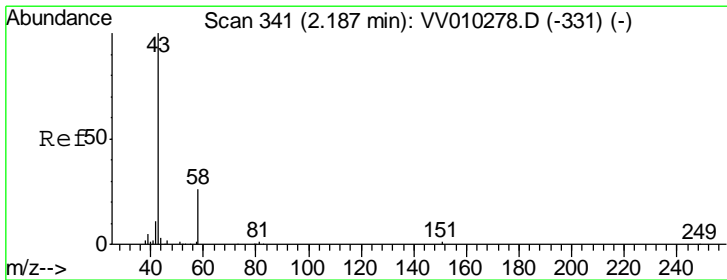
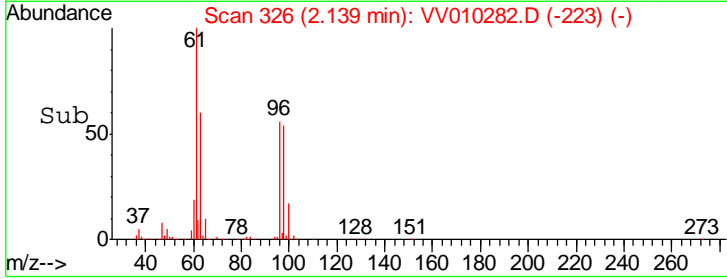
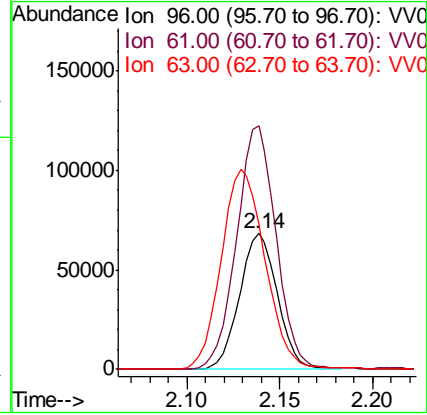
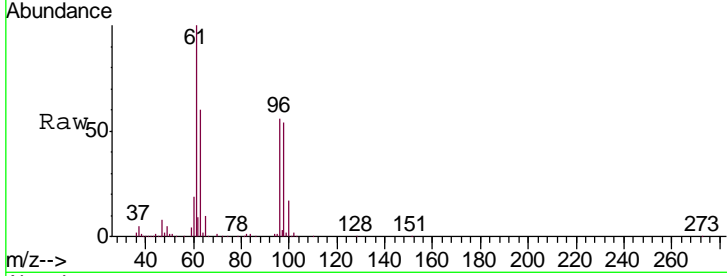




#12
 1,1-Dichloroethene
 Concen: 25.775 ug/L
 RT: 2.14 min Scan# 326
 Delta R.T. -0.00 min
 Lab File: VV010282.D
 Acq: 12 Apr 2019 12:53

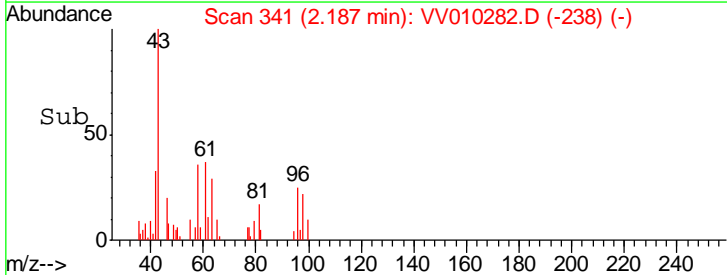
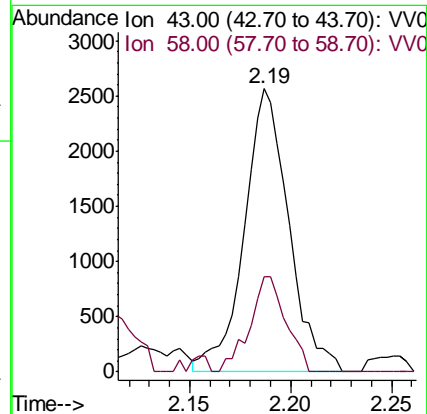
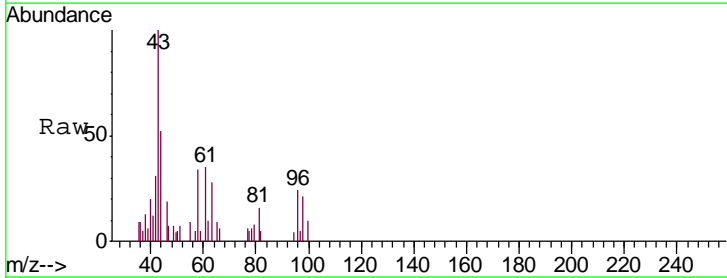
Instrument :
 MSVOA_V
 ClientSampled :
 DB733MSD

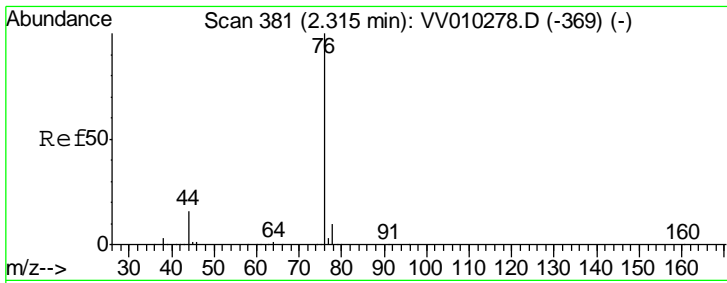
Tgt Ion	Resp	Lower	Upper
96	96608		
61	179.4	125.3	232.7
63	107.0	91.3	169.6



#13
 Acetone
 Concen: 4.477 ug/L
 RT: 2.19 min Scan# 341
 Delta R.T. -0.00 min
 Lab File: VV010282.D
 Acq: 12 Apr 2019 12:53

Tgt Ion	Resp	Lower	Upper
43	3959		
58	27.6	0.0	61.6

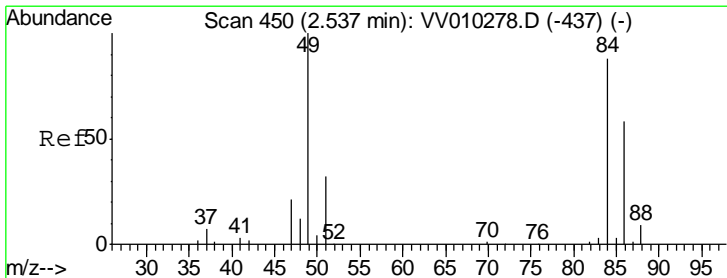
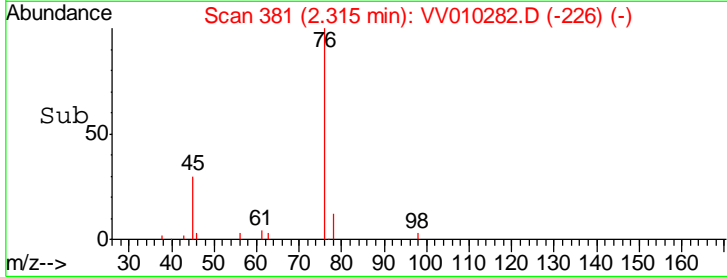
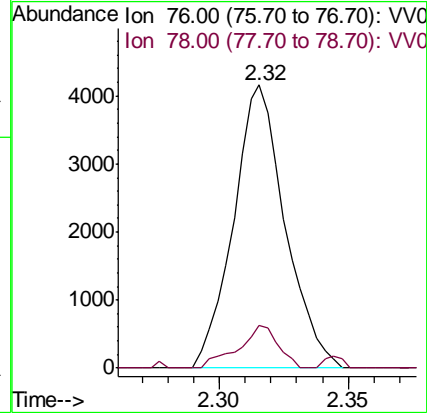
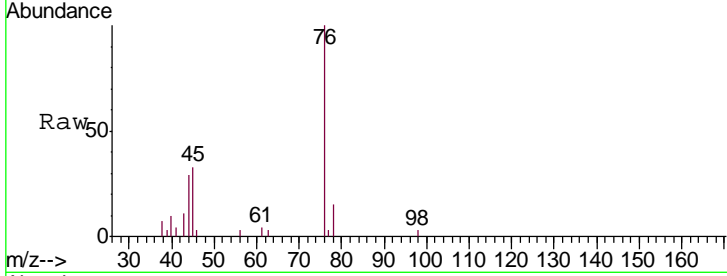




#14
 Carbon disulfide
 Concen: 0.641 ug/L
 RT: 2.32 min Scan# 381
 Delta R.T. -0.00 min
 Lab File: VV010282.D
 Acq: 12 Apr 2019 12:53

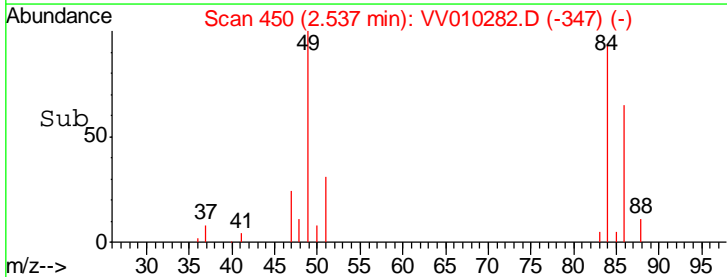
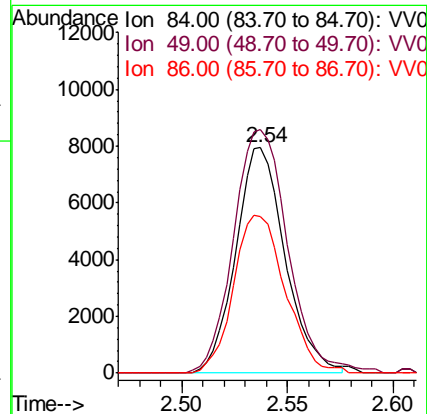
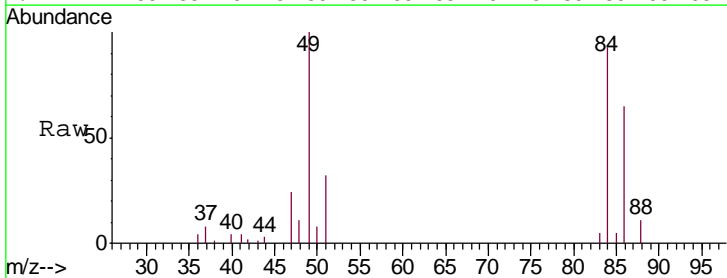
Instrument :
 MSVOA_V
 ClientSampled :
 DB733MSD

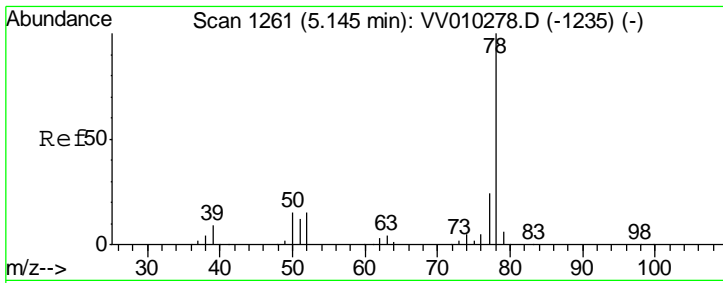
Tgt Ion	Resp	Lower	Upper
76	100		
78	14.9	7.0	10.4#



#16
 Methylene chloride
 Concen: 2.330 ug/L
 RT: 2.54 min Scan# 450
 Delta R.T. -0.00 min
 Lab File: VV010282.D
 Acq: 12 Apr 2019 12:53

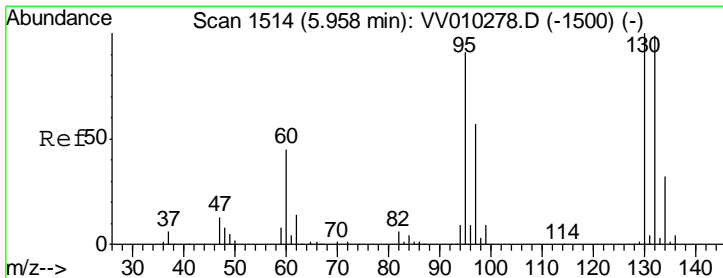
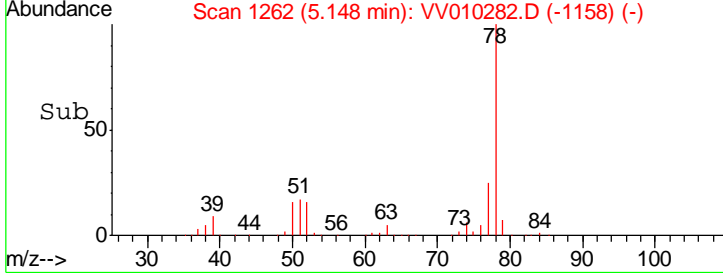
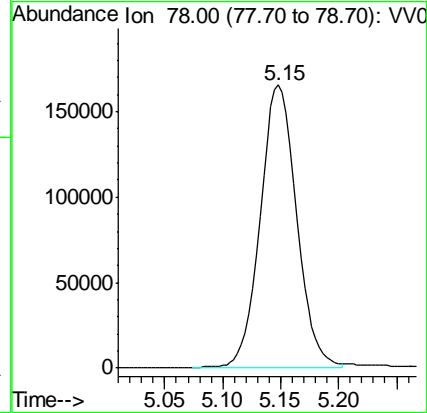
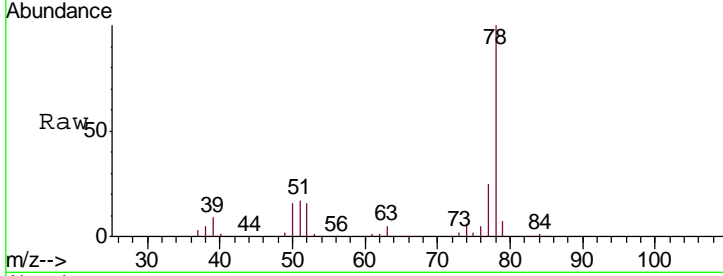
Tgt Ion	Resp	Lower	Upper
84	100		
49	108.1	79.9	148.5
86	69.8	44.5	82.7





#34
 Benzene
 Concen: 26.511 ug/L
 RT: 5.15 min Scan# 1262
 Delta R.T. 0.00 min
 Lab File: VV010282.D
 Acq: 12 Apr 2019 12:53
 Tgt Ion: 78 Resp: 363301

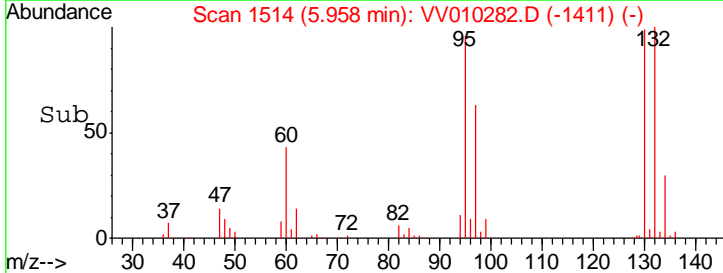
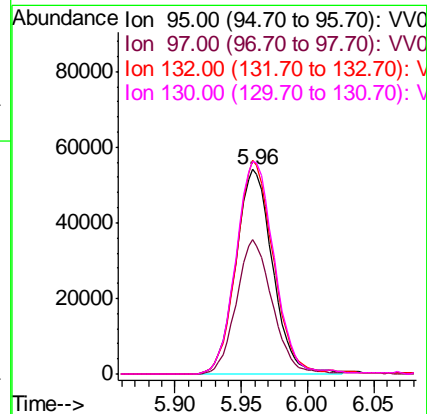
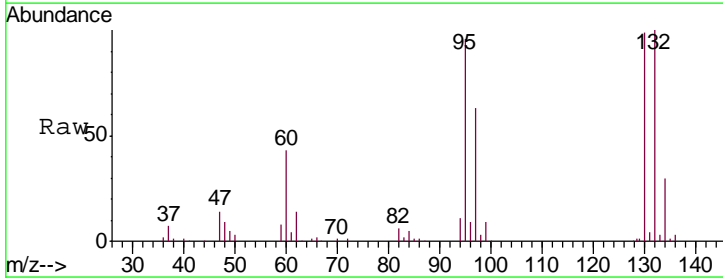
Instrument : MSVOA_V
 ClientSampled : DB733MSD

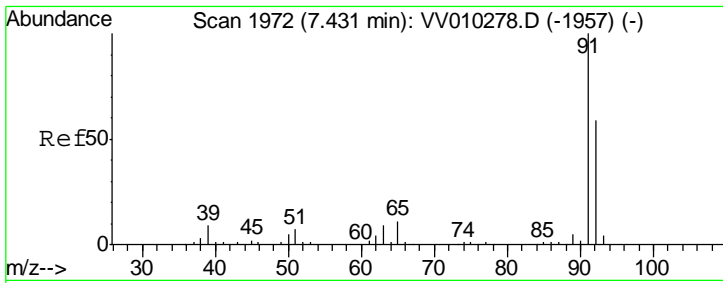


#35
 Trichloroethene
 Concen: 26.465 ug/L
 RT: 5.96 min Scan# 1514
 Delta R.T. -0.00 min
 Lab File: VV010282.D
 Acq: 12 Apr 2019 12:53

Tgt Ion: 95 Resp: 104785

Ion	Ratio	Lower	Upper
95	100		
97	63.9	44.3	82.3
132	103.7	71.3	132.3
130	106.7	73.4	136.4

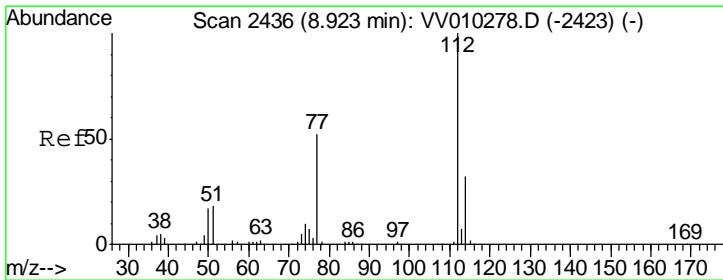
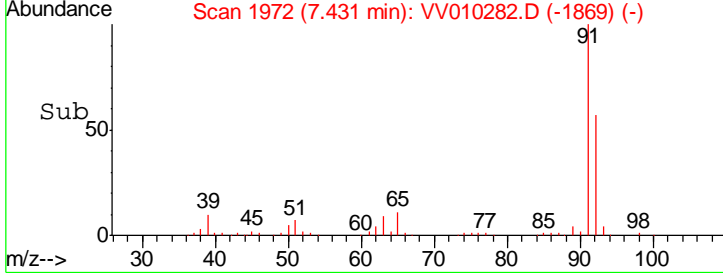
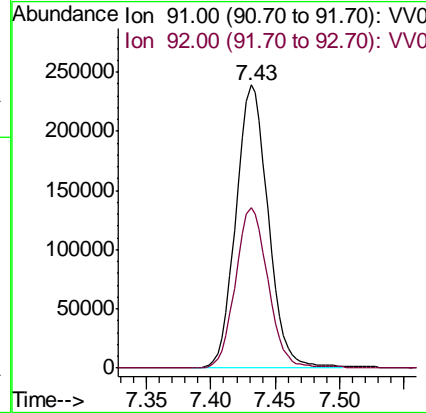
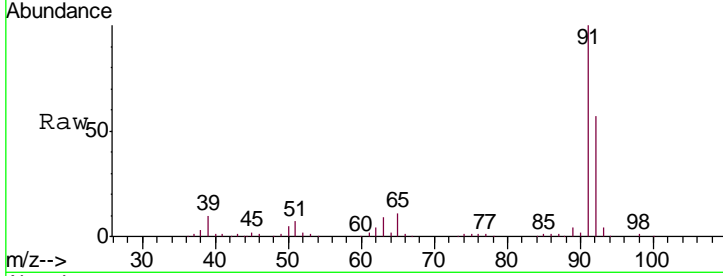




#44
 Toluene
 Concen: 27.040 ug/L
 RT: 7.43 min Scan# 1972
 Delta R.T. -0.00 min
 Lab File: VV010282.D
 Acq: 12 Apr 2019 12:53

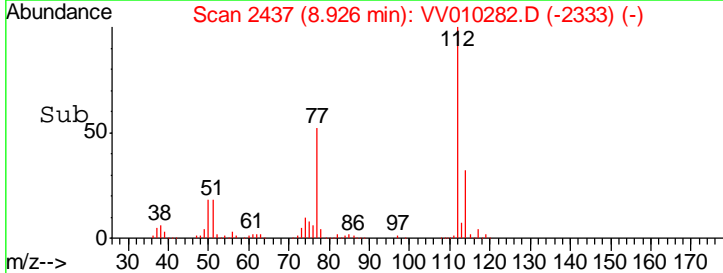
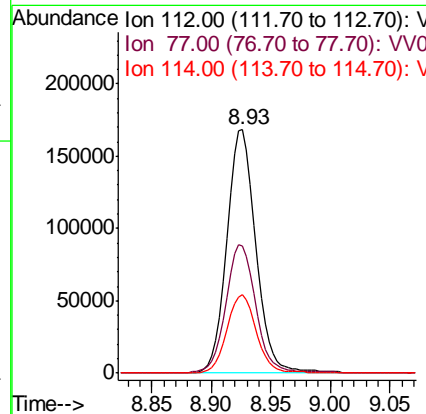
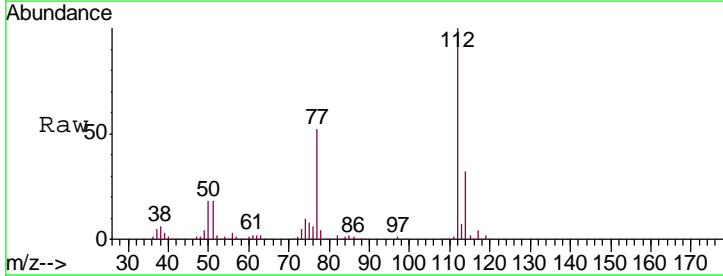
Instrument :
 MSVOA_V
 ClientSampled :
 DB733MSD

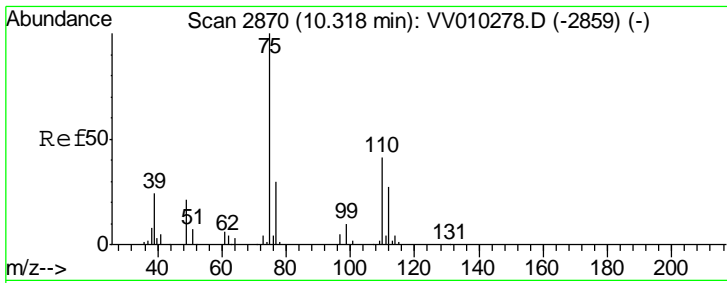
Tgt Ion: 91 Resp: 416564
 Ion Ratio Lower Upper
 91 100
 92 56.8 41.0 76.2



#52
 Chlorobenzene
 Concen: 26.565 ug/L
 RT: 8.93 min Scan# 2437
 Delta R.T. 0.00 min
 Lab File: VV010282.D
 Acq: 12 Apr 2019 12:53

Tgt Ion: 112 Resp: 285580
 Ion Ratio Lower Upper
 112 100
 77 52.5 42.2 63.2
 114 32.0 23.4 43.4





#59
 1,2,3-Trichloropropane
 Concen: 5.374 ug/L
 RT: 11.29 min Scan# 3173
 Delta R.T. 0.97 min
 Lab File: VV010282.D
 Acq: 12 Apr 2019 12:53

Instrument : MSVOA_V
 ClientSampled : DB733MSD

Tgt Ion: 75 Resp: 13904

Ion	Ratio	Lower	Upper
75	100		
77	20.4	26.9	40.3#

