

Data Path : Z:\voasrv\HPCHEM1\MSVOA_V\Data\VW041223\
 Data File : VW030521.D
 Acq On : 12 Apr 2023 16:35
 Operator : SY/MD
 Sample : 02275-05
 Misc : 25.0mL/MSVOA_V/WATER
 ALS Vial : 13 Sample Multiplier: 1

Instrument :
 MSVOA_V
 ClientSampleId :
 BHDZ1

Quant Time: Apr 13 02:50:13 2023
 Quant Method : Z:\voasrv\HPCHEM1\MSVOA_V\Method\SFAMVTR032323WMA.M
 Quant Title : TRACE VOA SFAM1.0
 QLast Update : Thu Apr 13 02:44:31 2023
 Response via : Initial Calibration

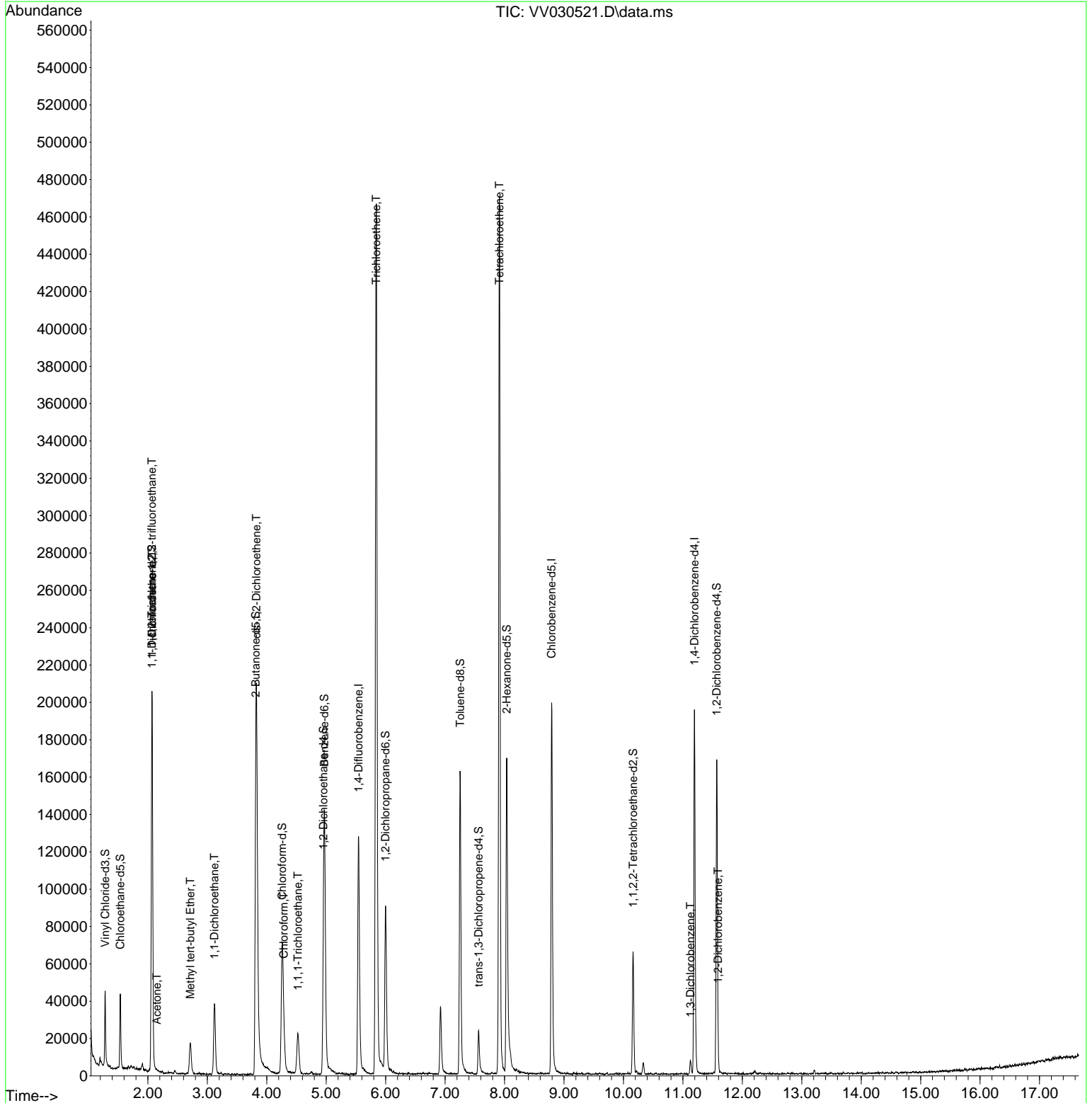
Compound	R.T.	QIon	Response	Conc	Units	Dev(Min)
Internal Standards						
1) 1,4-Difluorobenzene	5.545	114	109487	5.000	ug/L	0.00
28) Chlorobenzene-d5	8.792	117	109715	5.000	ug/L	0.00
58) 1,4-Dichlorobenzene-d4	11.194	152	52581	5.000	ug/L	0.00
System Monitoring Compounds						
4) Vinyl Chloride-d3	1.282	65	26544	3.661	ug/L	0.00
Spiked Amount	5.000	Range 40 - 130	Recovery	=	73.200%	
7) Chloroethane-d5	1.536	69	26498	3.765	ug/L	0.00
Spiked Amount	5.000	Range 65 - 130	Recovery	=	75.400%	
11) 1,1-Dichloroethene-d2	2.066	63	70014	4.069	ug/L	0.00
Spiked Amount	5.000	Range 60 - 125	Recovery	=	81.400%	
20) 2-Butanone-d5	3.815	46	79078	42.192	ug/L	-0.02
Spiked Amount	50.000	Range 40 - 130	Recovery	=	84.380%	
24) Chloroform-d	4.259	84	71595	4.079	ug/L	0.00
Spiked Amount	5.000	Range 70 - 125	Recovery	=	81.600%	
26) 1,2-Dichloroethane-d4	4.953	65	36998	4.468	ug/L	0.00
Spiked Amount	5.000	Range 70 - 130	Recovery	=	89.400%	
32) Benzene-d6	4.969	84	122588	3.965	ug/L	0.00
Spiked Amount	5.000	Range 70 - 125	Recovery	=	79.400%	
36) 1,2-Dichloropropane-d6	5.998	67	40062	4.139	ug/L	0.00
Spiked Amount	5.000	Range 60 - 140	Recovery	=	82.800%	
41) Toluene-d8	7.252	98	109488	3.856	ug/L	0.00
Spiked Amount	5.000	Range 70 - 130	Recovery	=	77.200%	
43) trans-1,3-Dichloroprop...	7.564	79	13413	3.680	ug/L	0.00
Spiked Amount	5.000	Range 55 - 130	Recovery	=	73.600%	
46) 2-Hexanone-d5	8.037	63	59260	40.467	ug/L	0.00
Spiked Amount	50.000	Range 45 - 130	Recovery	=	80.940%	
56) 1,1,2,2-Tetrachloroeth...	10.162	84	30385	3.983	ug/L	0.00
Spiked Amount	5.000	Range 65 - 120	Recovery	=	79.600%	
66) 1,2-Dichlorobenzene-d4	11.570	152	42290	4.500	ug/L	0.00
Spiked Amount	5.000	Range 80 - 120	Recovery	=	90.000%	
Target Compounds						
10) 1,1,2-Trichloro-1,2,2-...	2.069	101	4236	0.411	ug/L	93
12) 1,1-Dichloroethene	2.072	96	37402	4.088	ug/L	95
13) Acetone	2.150	43	2830	1.579	ug/L	100
17) Methyl tert-butyl Ether	2.716	73	15022	0.775	ug/L	97
19) 1,1-Dichloroethane	3.121	63	35928	1.923	ug/L	94
22) cis-1,2-Dichloroethene	3.825	96	98897	10.225	ug/L	100
25) Chloroform	4.285	83	11328	0.600	ug/L	90
29) 1,1,1-Trichloroethane	4.526	97	16883	0.957	ug/L	97
34) Trichloroethene	5.841	95	160365	15.259	ug/L	98
47) Tetrachloroethene	7.915	164	104588	11.276	ug/L	97
64) 1,3-Dichlorobenzene	11.130	146	3178	0.164	ug/L	93
67) 1,2-Dichlorobenzene	11.593	146	1361	0.078	ug/L	98

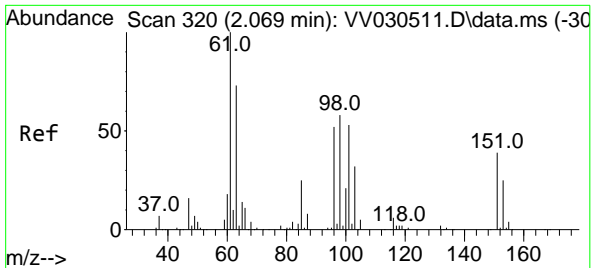
(#) = qualifier out of range (m) = manual integration (+) = signals summed

Data Path : Z:\voasrv\HPCHEM1\MSVOA_V\Data\VV041223\
 Data File : VV030521.D
 Acq On : 12 Apr 2023 16:35
 Operator : SY/MD
 Sample : 02275-05
 Misc : 25.0mL/MSVOA_V/WATER
 ALS Vial : 13 Sample Multiplier: 1

Instrument :
 MSVOA_V
 ClientSampleId :
 BHDZ1

Quant Time: Apr 13 02:50:13 2023
 Quant Method : Z:\voasrv\HPCHEM1\MSVOA_V\Method\SFAMVTR032323WMA.M
 Quant Title : TRACE VOA SFAM1.0
 QLast Update : Thu Apr 13 02:44:31 2023
 Response via : Initial Calibration

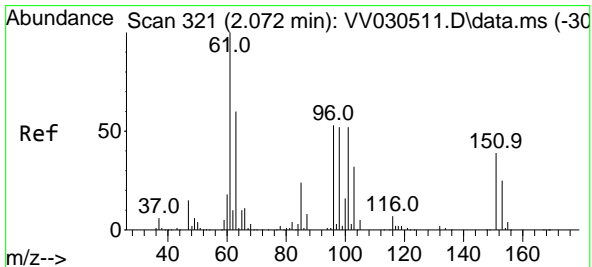
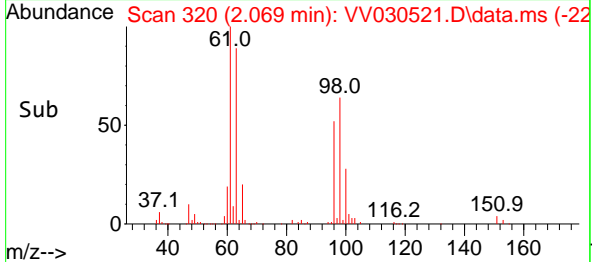
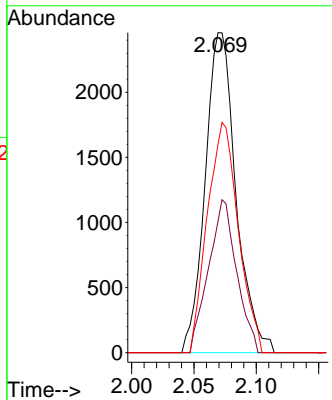
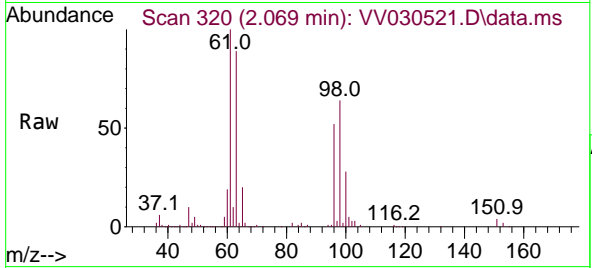




#10
 1,1,2-Trichloro-1,2,2-trifluoroethane
 Concen: 0.411 ug/L
 RT: 2.069 min Scan# 311
 Delta R.T. 0.000 min
 Lab File: VV030521.D
 Acq: 12 Apr 2023 16:35

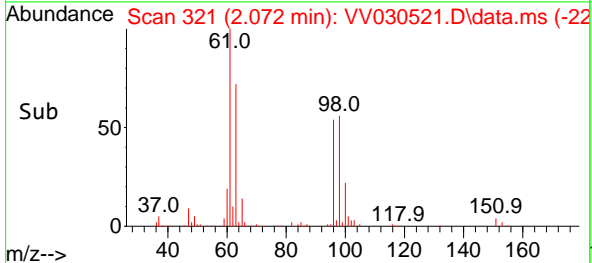
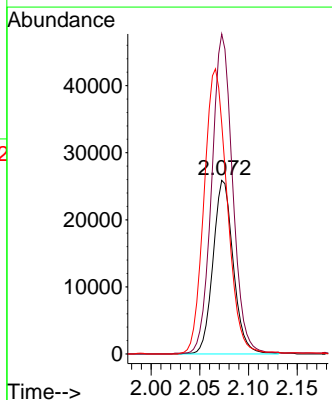
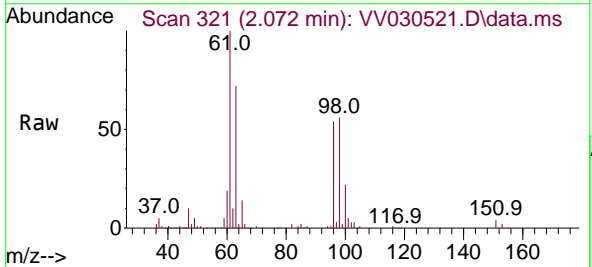
Instrument : MSVOA_V
 ClientSampleId : BHDZ1

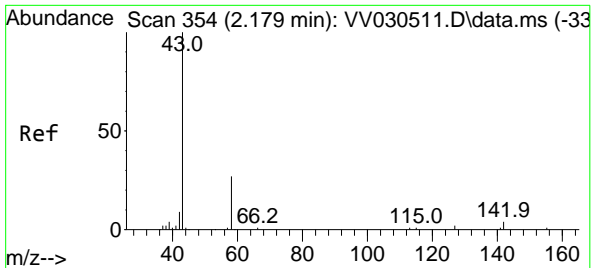
Tgt Ion	Resp	Lower	Upper
101	4236		
101	100		
85	43.5	38.1	57.1
151	72.1	62.7	94.1



#12
 1,1-Dichloroethene
 Concen: 4.088 ug/L
 RT: 2.072 min Scan# 321
 Delta R.T. 0.000 min
 Lab File: VV030521.D
 Acq: 12 Apr 2023 16:35

Tgt Ion	Resp	Lower	Upper
96	37402		
96	100		
61	184.3	136.3	253.1
63	132.8	92.1	171.1



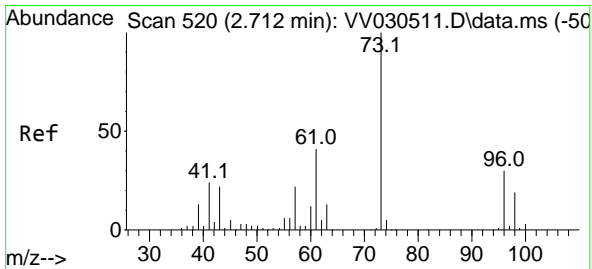
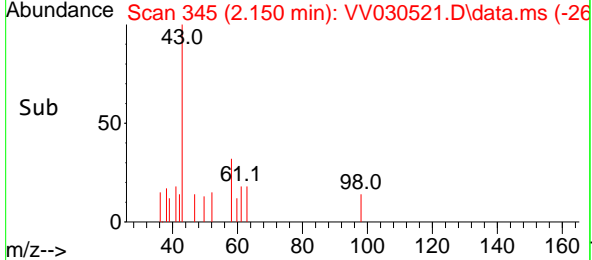
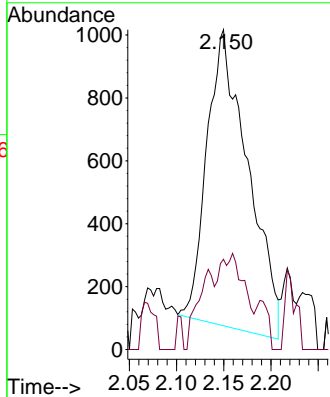
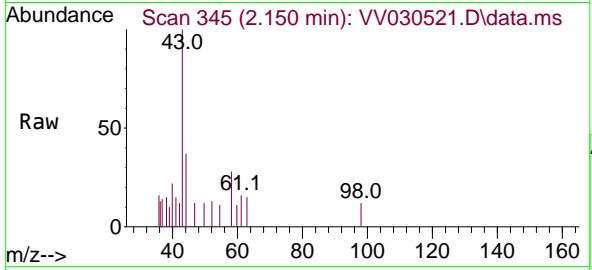


#13
 Acetone
 Concen: 1.579 ug/L
 RT: 2.150 min Scan# 34
 Delta R.T. -0.029 min
 Lab File: VV030521.D
 Acq: 12 Apr 2023 16:35

Instrument : MSVOA_V
 ClientSampleId : BHDZ1

Tgt Ion: 43 Resp: 2830

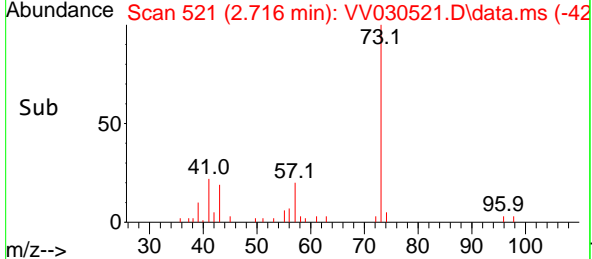
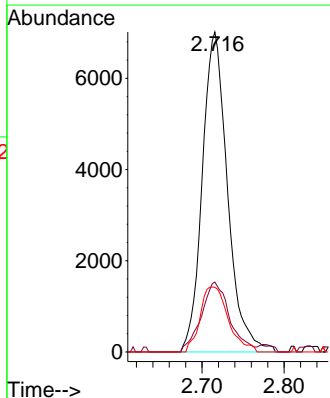
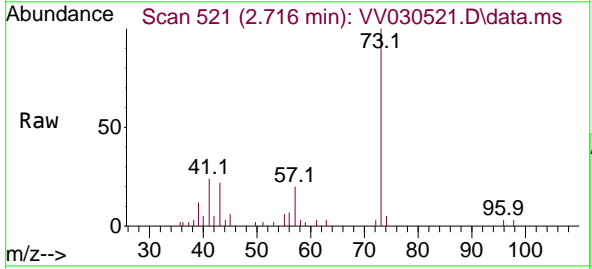
Ion	Ratio	Lower	Upper
43	100		
58	20.4	0.0	40.8

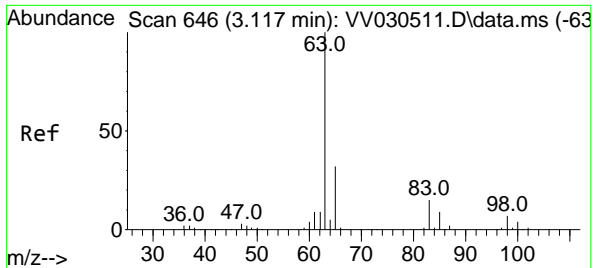


#17
 Methyl tert-butyl Ether
 Concen: 0.775 ug/L
 RT: 2.716 min Scan# 521
 Delta R.T. 0.003 min
 Lab File: VV030521.D
 Acq: 12 Apr 2023 16:35

Tgt Ion: 73 Resp: 15022

Ion	Ratio	Lower	Upper
73	100		
43	24.6	17.4	26.2
57	22.6	18.3	27.5

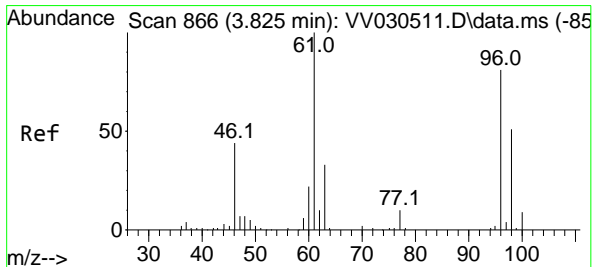
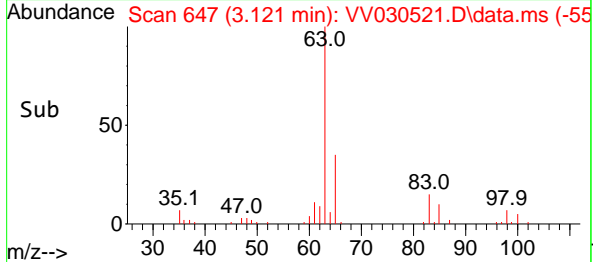
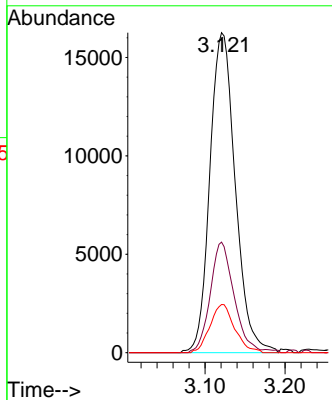
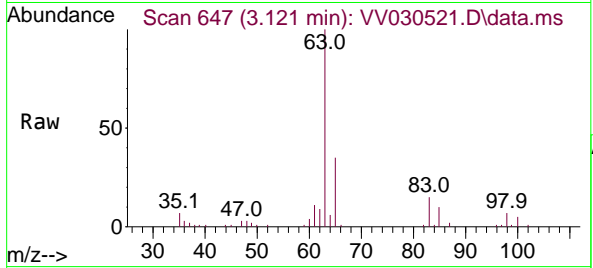




#19
 1,1-Dichloroethane
 Concen: 1.923 ug/L
 RT: 3.121 min Scan# 647
 Delta R.T. 0.003 min
 Lab File: VV030521.D
 Acq: 12 Apr 2023 16:35

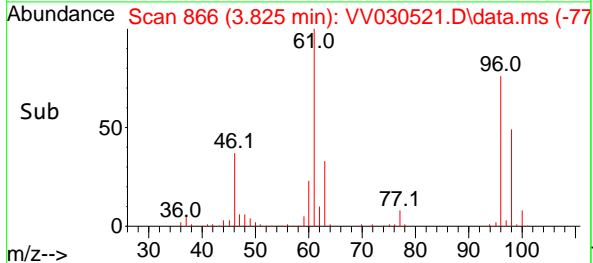
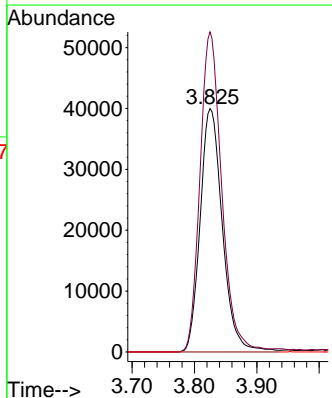
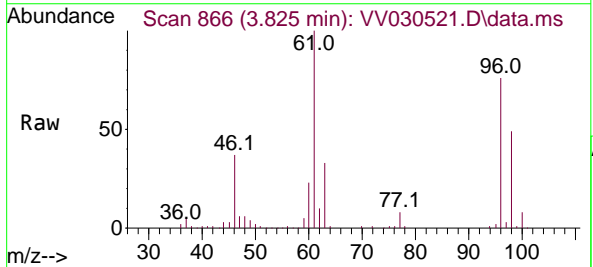
Instrument : MSVOA_V
 ClientSampleId : BHDZ1

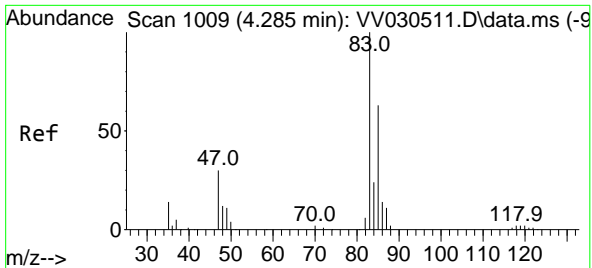
Tgt Ion	Resp	Lower	Upper
63	35928		
65	34.6	21.7	40.3
83	15.1	9.1	16.9



#22
 cis-1,2-Dichloroethene
 Concen: 10.225 ug/L
 RT: 3.825 min Scan# 866
 Delta R.T. 0.000 min
 Lab File: VV030521.D
 Acq: 12 Apr 2023 16:35

Tgt Ion	Resp	Lower	Upper
96	98897		
61	131.4	92.0	170.8
68	0.0	0.0	0.0

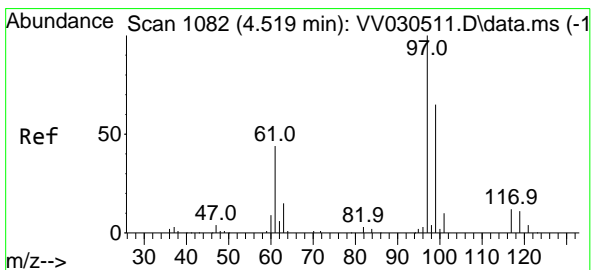
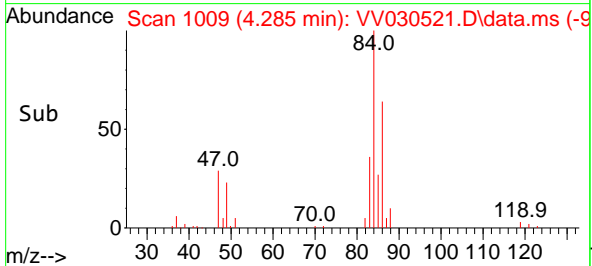
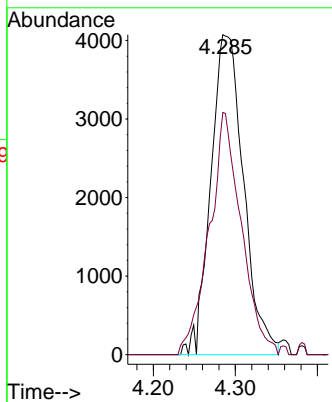
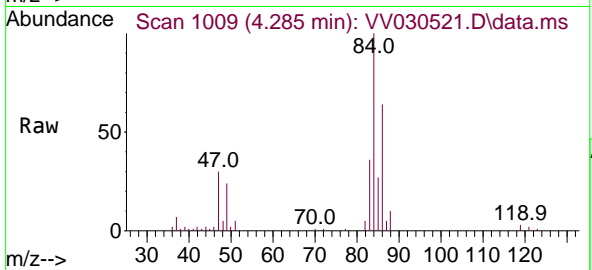




#25
 Chloroform
 Concen: 0.600 ug/L
 RT: 4.285 min Scan# 1009
 Delta R.T. 0.000 min
 Lab File: VV030521.D
 Acq: 12 Apr 2023 16:35

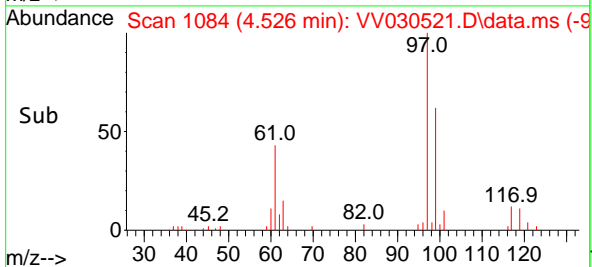
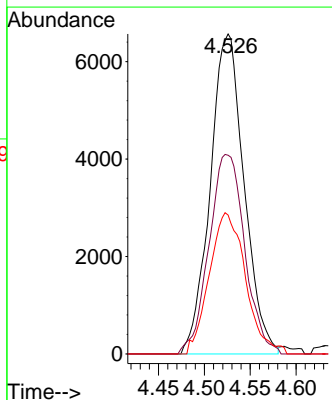
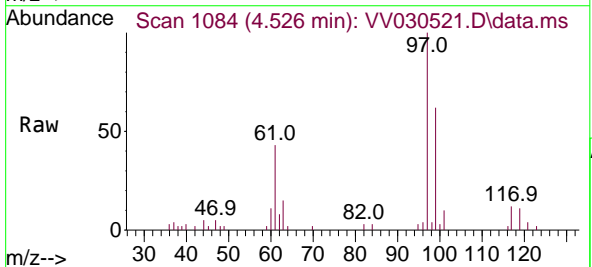
Instrument : MSVOA_V
 ClientSampleId : BHDZ1

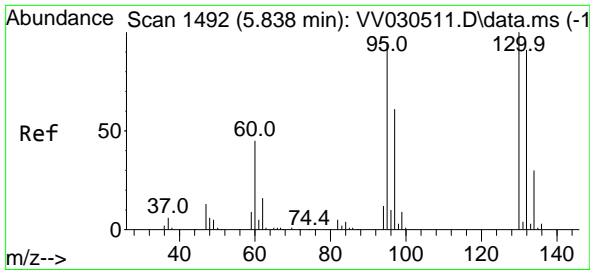
Tgt Ion: 83 Resp: 11328
 Ion Ratio Lower Upper
 83 100
 85 75.7 47.6 88.4



#29
 1,1,1-Trichloroethane
 Concen: 0.957 ug/L
 RT: 4.526 min Scan# 1084
 Delta R.T. 0.007 min
 Lab File: VV030521.D
 Acq: 12 Apr 2023 16:35

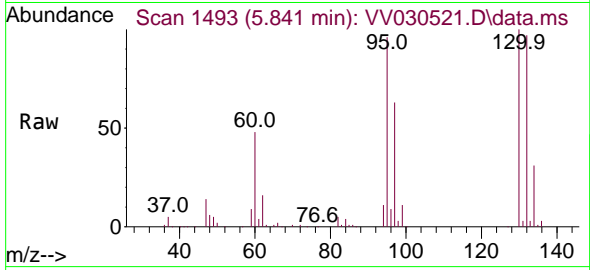
Tgt Ion: 97 Resp: 16883
 Ion Ratio Lower Upper
 97 100
 99 65.7 50.9 76.3
 61 47.2 35.9 53.9





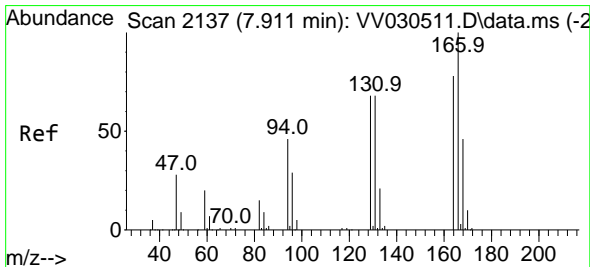
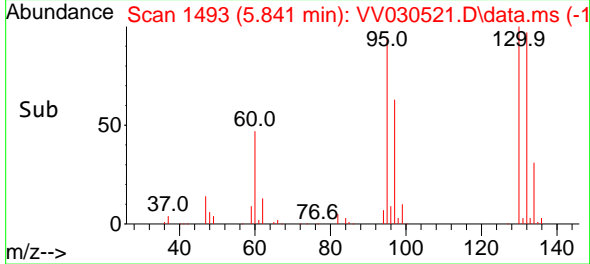
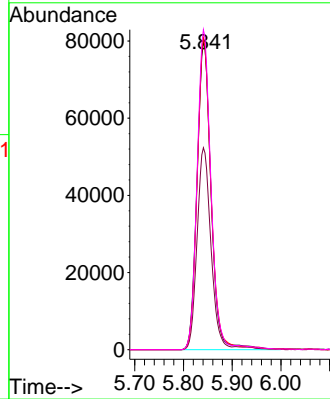
#34
 Trichloroethene
 Concen: 15.259 ug/L
 RT: 5.841 min Scan# 1493
 Delta R.T. 0.003 min
 Lab File: VV030521.D
 Acq: 12 Apr 2023 16:35

Instrument : MSVOA_V
 ClientSampleId : BHDZ1



Tgt Ion: 95 Resp: 160365

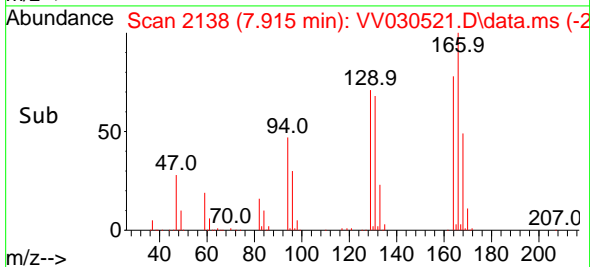
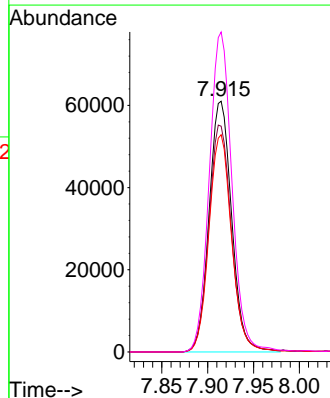
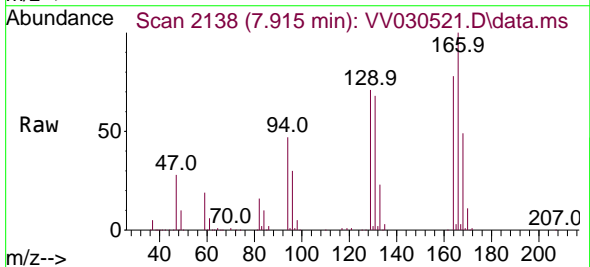
Ion	Ratio	Lower	Upper
95	100		
97	65.7	44.2	82.2
132	101.4	69.5	129.1
130	104.0	72.2	134.0

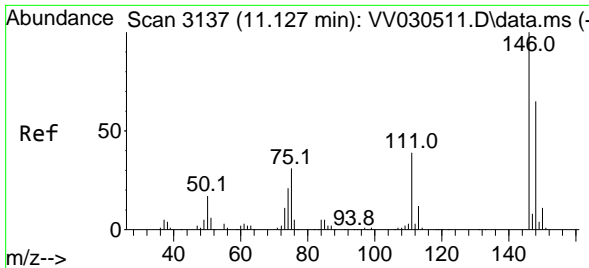


#47
 Tetrachloroethene
 Concen: 11.276 ug/L
 RT: 7.915 min Scan# 2138
 Delta R.T. 0.003 min
 Lab File: VV030521.D
 Acq: 12 Apr 2023 16:35

Tgt Ion: 164 Resp: 104588

Ion	Ratio	Lower	Upper
164	100		
129	90.1	60.8	112.8
131	86.7	61.7	114.7
166	127.7	85.6	159.0



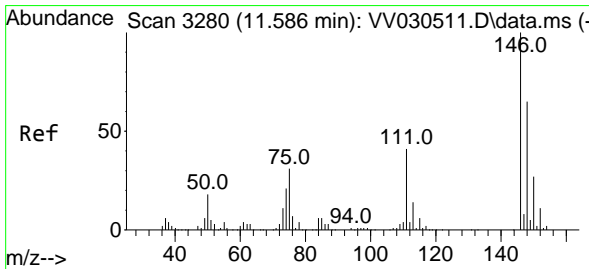
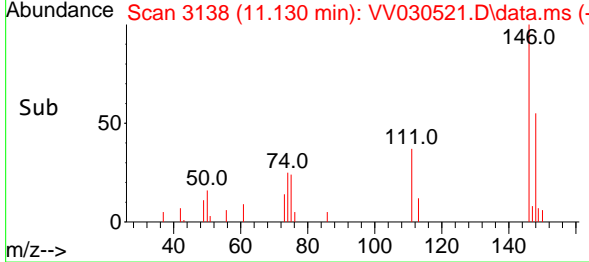
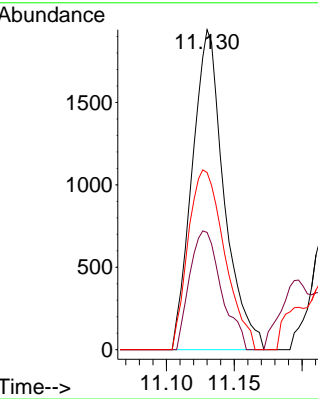
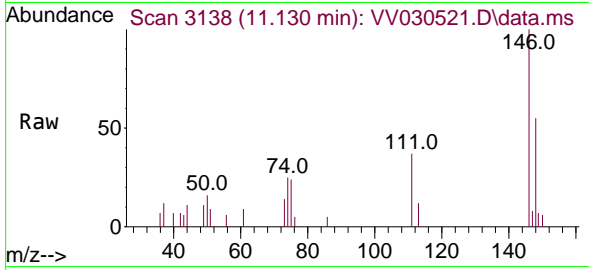


#64
 1,3-Dichlorobenzene
 Concen: 0.164 ug/L
 RT: 11.130 min Scan# 3137
 Delta R.T. 0.003 min
 Lab File: VV030521.D
 Acq: 12 Apr 2023 16:35

Instrument : MSVOA_V
 ClientSampleId : BHDZ1

Tgt Ion:146 Resp: 3178

Ion	Ratio	Lower	Upper
146	100		
111	36.7	27.0	50.2
148	55.4	44.2	82.2



#67
 1,2-Dichlorobenzene
 Concen: 0.078 ug/L
 RT: 11.593 min Scan# 3282
 Delta R.T. 0.007 min
 Lab File: VV030521.D
 Acq: 12 Apr 2023 16:35

Tgt Ion:146 Resp: 1361

Ion	Ratio	Lower	Upper
146	100		
111	42.9	33.1	49.7
148	63.2	52.2	78.2

