

Data Path : Z:\voasrv\HPCHEM1\MSVOA_V\Data\VV041223\
 Data File : VV030515.D
 Acq On : 12 Apr 2023 14:07
 Operator : SY/MD
 Sample : VIBLK286
 Misc : 25.0mL/MSVOA_V/WATER
 ALS Vial : 7 Sample Multiplier: 1

Instrument :
 MSVOA_V
 ClientSampleId :
 VIBLK286

Integration Parameters: rteint.p
 Integrator: RTE
 Smoothing : ON
 Sampling : 1
 Start Thrs : 0.1
 Stop Thrs : 0
 Filtering: 5
 Min Area: 3 % of largest Peak
 Max Peaks: 100
 Peak Location: TOP

If leading or trailing edge < 100 prefer < Baseline drop else tangent >
 Peak separation: 5

Method : Z:\voasrv\HPCHEM1\MSVOA_V\Method\SFAMVTR032323WMA.M
 Title : TRACE VOA SFAM1.0

Signal : TIC: VV030515.D\data.ms

peak #	R.T. min	first scan	max scan	last scan	PK TY	peak height	corr. area	corr. % max.	% of total
1	1.282	67	75	87	rBV	81312	88486	18.68%	2.429%
2	1.536	146	154	167	rVB	66768	78378	16.54%	2.151%
3	2.063	307	318	331	rBV	144748	209745	44.27%	5.756%
4	2.452	429	439	453	rVB3	5449	9546	2.02%	0.262%
5	3.834	858	869	870	rBV3	26359	34516	7.29%	0.947%
6	4.259	984	1001	1020	rBV	82398	212807	44.92%	5.841%
7	4.969	1203	1222	1247	rBV3	182250	473743	100.00%	13.002%
8	5.545	1388	1401	1424	rBV	129338	276117	58.28%	7.578%
9	5.998	1525	1542	1569	rBV2	107923	231258	48.82%	6.347%
10	6.924	1819	1830	1845	rBV	48219	94981	20.05%	2.607%
11	7.252	1917	1932	1956	rBV	207058	374018	78.95%	10.265%
12	7.564	2015	2029	2046	rBV2	31219	60329	12.73%	1.656%
13	8.040	2163	2177	2207	rBV	180028	401397	84.73%	11.016%
14	8.792	2399	2411	2431	rBV	201674	340149	71.80%	9.335%
15	10.162	2826	2837	2853	rBV	77734	127915	27.00%	3.511%
16	11.194	3147	3158	3179	rBV	197498	311499	65.75%	8.549%
17	11.570	3263	3275	3291	rBV	198082	318756	67.28%	8.748%

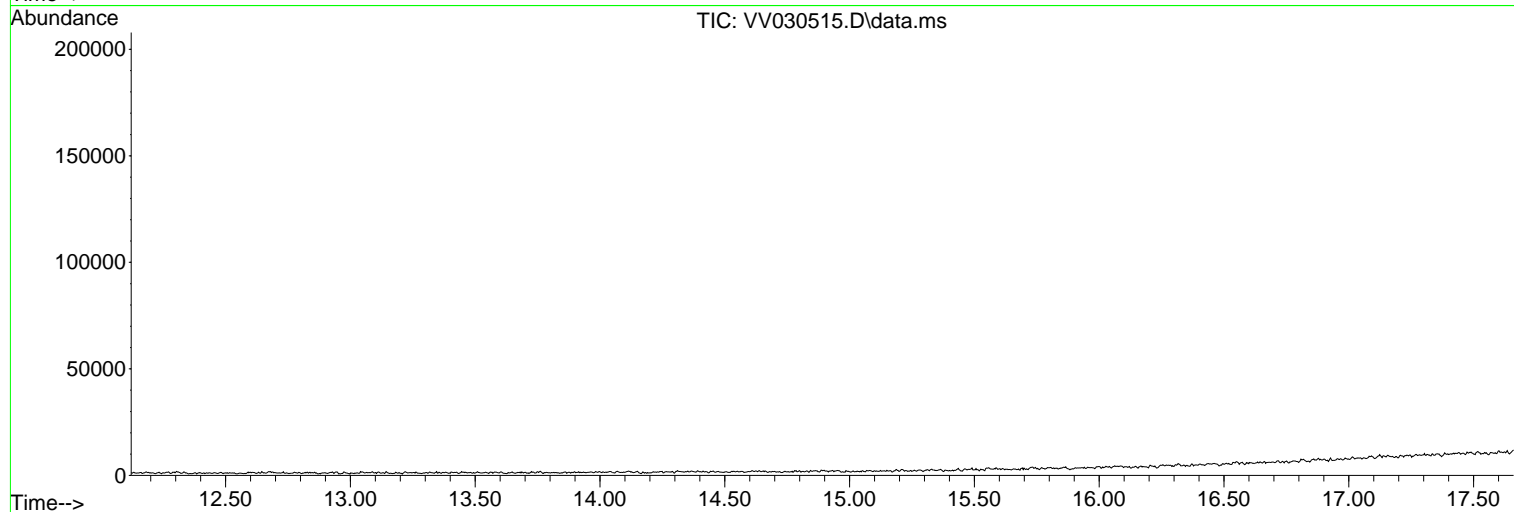
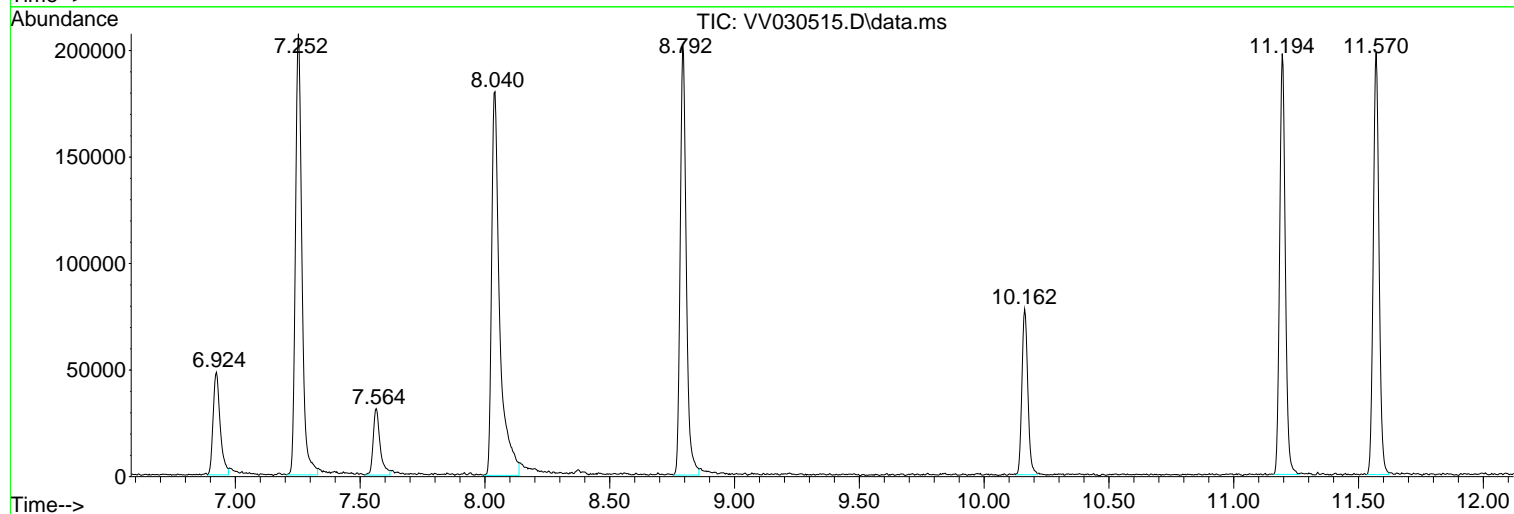
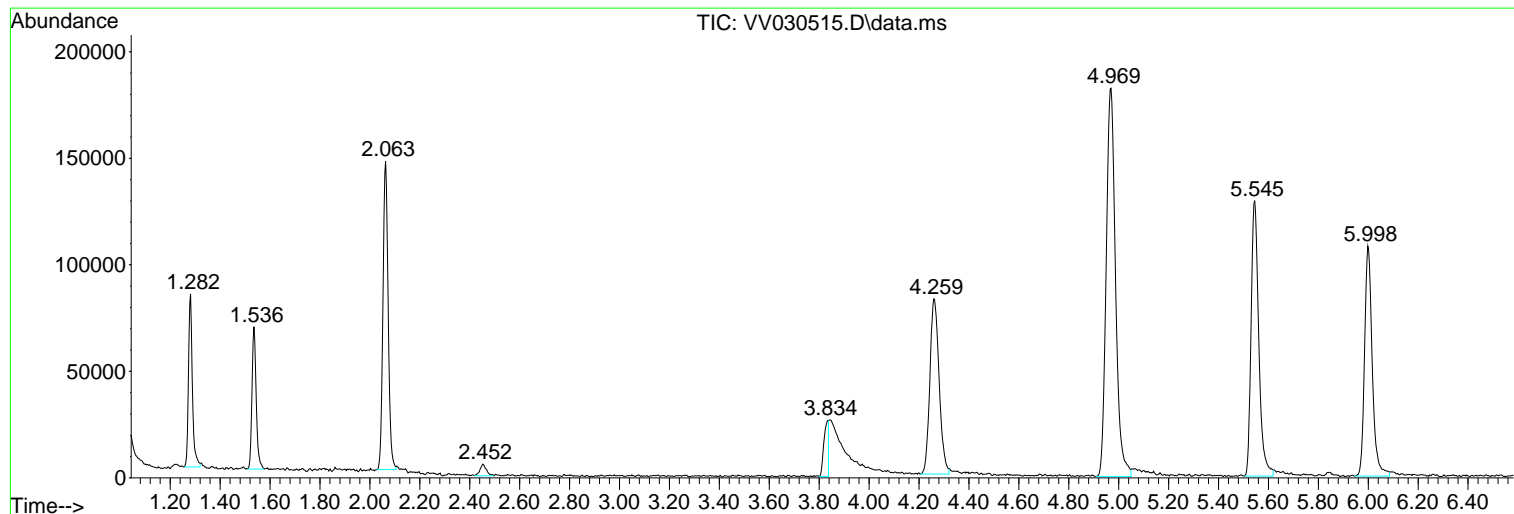
Sum of corrected areas: 3643640

Data Path : Z:\voasrv\HPCHEM1\MSVOA_V\Data\VV041223\
Data File : VV030515.D
Acq On : 12 Apr 2023 14:07
Operator : SY/MD
Sample : VIBLK286
Misc : 25.0mL/MSVOA_V/WATER
ALS Vial : 7 Sample Multiplier: 1

Instrument :
MSVOA_V
ClientSampleId :
VIBLK286

Quant Method : Z:\voasrv\HPCHEM1\MSVOA_V\Method\SFAMVTR032323WMA.M
Quant Title : TRACE VOA SFAM1.0

TIC Library : C:\Database\NIST20.L
TIC Integration Parameters: LSCINT.P



Library Search Compound Report

Data Path : Z:\voasrv\HPCHEM1\MSVOA_V\Data\VV041223\
Data File : VV030515.D
Acq On : 12 Apr 2023 14:07
Operator : SY/MD
Sample : VIBLK286
Misc : 25.0mL/MSVOA_V/WATER
ALS Vial : 7 Sample Multiplier: 1

Instrument :
MSVOA_V
ClientSampleId :
VIBLK286

Quant Method : Z:\voasrv\HPCHEM1\MSVOA_V\Method\SFAMVTR032323WMA.M
Quant Title : TRACE VOA SFAM1.0

TIC Library : C:\Database\NIST20.L
TIC Integration Parameters: LSCINT.P

No Library Search Compounds Detected

Data Path : Z:\voasrv\HPCHEM1\MSVOA_V\Data\VV041223\
Data File : VV030515.D
Acq On : 12 Apr 2023 14:07
Operator : SY/MD
Sample : VIBLK286
Misc : 25.0mL/MSVOA_V/WATER
ALS Vial : 7 Sample Multiplier: 1

Instrument :
MSVOA_V
ClientSampleId :
VIBLK286

Quant Method : Z:\voasrv\HPCHEM1\MSVOA_V\Method\SFAMVTR032323WMA.M
Quant Title : TRACE VOA SFAM1.0

TIC Library : C:\Database\NIST0.L
TIC Integration Parameters: LSCINT.P

TIC Top Hit name	RT	EstConc	Units	Response	--Internal Standard--			
					#	RT	Resp	Conc
