

Data Path : Z:\voasrv\HPCHEM1\MSVOA_V\Data\VV041321\
 Data File : VV020997.D
 Acq On : 13 Apr 2021 14:06
 Operator : SY/MD
 Sample : M1968-01
 Misc : 5.0mL/MSVOA_V/WATER
 ALS Vial : 12 Sample Multiplier: 1

Instrument :
 MSVOA_V
 ClientSampleId :
 BG3G8

Integration Parameters: LSCINT.P

Integrator: RTE
 Smoothing : OFF Filtering: 5
 Sampling : 1 Min Area: 0 % of largest Peak
 Start Thrs: 0.2 Max Peaks: 100
 Stop Thrs : 0 Peak Location: TOP

If leading or trailing edge < 100 prefer < Baseline drop else tangent >
 Peak separation: 5

Method : Z:\voasrv\HPCHEM1\MSVOA_V\Method\SOMVLM041321WMA.M
 Title : VOC Analysis

Signal : TIC: VV020997.D\data.ms

peak #	R.T. min	first scan	max scan	last scan	PK TY	peak height	corr. area	corr. % max.	% of total
1	1.311	78	84	100	rVB	224144	236315	13.19%	1.753%
2	2.111	324	333	352	rVB	426947	616027	34.38%	4.569%
3	2.298	386	391	399	rVB3	3625	5593	0.31%	0.041%
4	2.333	399	402	403	rBV	462	319	0.02%	0.002%
5	2.725	522	524	527	rBV3	413	230	0.01%	0.002%
6	2.909	577	581	586	rBV2	673	723	0.04%	0.005%
7	2.934	586	589	594	rBV2	488	445	0.02%	0.003%
8	2.957	594	596	597	rBV	485	275	0.02%	0.002%
9	3.011	610	613	614	rBV	427	256	0.01%	0.002%
10	3.047	619	624	630	rVB4	1451	1445	0.08%	0.011%
11	3.092	636	638	644	rVB3	650	582	0.03%	0.004%
12	3.134	645	651	652	rBV	434	387	0.02%	0.003%
13	3.188	666	668	671	rVB2	459	226	0.01%	0.002%
14	3.208	671	674	679	rBV2	270	246	0.01%	0.002%
15	3.278	692	696	698	rVB2	473	320	0.02%	0.002%
16	3.378	725	727	730	rBV2	299	256	0.01%	0.002%
17	3.391	730	731	733	rBV	375	169	0.01%	0.001%
18	3.433	740	744	748	rVB3	266	159	0.01%	0.001%
19	3.484	755	760	762	rBV2	498	443	0.02%	0.003%
20	3.519	769	771	772	rBV	394	153	0.01%	0.001%
21	3.532	772	775	777	rVB2	614	317	0.02%	0.002%
22	3.667	814	817	823	rVB	264	172	0.01%	0.001%
23	3.696	824	826	830	rVB3	418	275	0.02%	0.002%
24	3.719	830	833	836	rBV3	874	536	0.03%	0.004%
25	3.828	865	867	868	rBV3	393	160	0.01%	0.001%
26	3.899	877	889	918	rBV2	97773	299197	16.70%	2.219%
27	4.352	1015	1030	1059	rBV	322462	788330	44.00%	5.847%
28	4.732	1146	1148	1151	rBV2	407	196	0.01%	0.001%
29	4.780	1160	1163	1165	rVB2	837	456	0.03%	0.003%
30	4.799	1165	1169	1173	rBV2	478	478	0.03%	0.004%
31	4.831	1177	1179	1183	rBV2	932	663	0.04%	0.005%
32	4.873	1190	1192	1197	rVB2	551	299	0.02%	0.002%
33	4.912	1202	1204	1207	rVB2	398	168	0.01%	0.001%
34	4.966	1219	1221	1223	rVB2	496	194	0.01%	0.001%
35	5.050	1230	1247	1274	rBV3	697723	1791734	100.00%	13.289%
36	5.310	1326	1328	1334	rVB3	1204	790	0.04%	0.006%

Data Path : Z:\voasrv\HPCHEM1\MSVOA_V\Data\VW041321\
 Data File : VW020997.D
 Acq On : 13 Apr 2021 14:06
 Operator : SY/MD
 Sample : M1968-01
 Misc : 5.0mL/MSVOA_V/WATER
 ALS Vial : 12 Sample Multiplier: 1

Instrument :
 MSVOA_V
 ClientSampleId :
 BG3G8

Integration Parameters: LSCINT.P

Integrator: RTE
 Smoothing : OFF Filtering: 5
 Sampling : 1 Min Area: 0 % of largest Peak
 Start Thrs: 0.2 Max Peaks: 100
 Stop Thrs : 0 Peak Location: TOP

If leading or trailing edge < 100 prefer < Baseline drop else tangent >
 Peak separation: 5

Method : Z:\voasrv\HPCHEM1\MSVOA_V\Method\SOMVLM041321WMA.M
 Title : VOC Analysis

37	5.397	1352	1355	1356	rBV	503	261	0.01%	0.002%
38	5.420	1360	1362	1369	rVB3	563	522	0.03%	0.004%
39	5.465	1370	1376	1378	rBV4	587	534	0.03%	0.004%
40	5.497	1383	1386	1387	rVV	689	361	0.02%	0.003%
41	5.516	1390	1392	1394	rVB	502	263	0.01%	0.002%
42	5.574	1408	1410	1411	rBV2	642	276	0.02%	0.002%
43	5.622	1411	1425	1454	rVV	533837	1068815	59.65%	7.927%
44	6.076	1553	1566	1594	rBV	381656	780730	43.57%	5.791%
45	6.484	1689	1693	1697	rBV2	490	412	0.02%	0.003%
46	6.506	1697	1700	1701	rBV	476	239	0.01%	0.002%
47	6.616	1733	1734	1738	rBV2	391	202	0.01%	0.001%
48	6.683	1750	1755	1756	rBV2	519	489	0.03%	0.004%
49	6.706	1760	1762	1763	rBV2	318	159	0.01%	0.001%
50	6.748	1771	1775	1779	rBV3	552	464	0.03%	0.003%
51	6.867	1809	1812	1813	rBV2	401	238	0.01%	0.002%
52	6.992	1839	1851	1869	rBV	227777	417980	23.33%	3.100%
53	7.268	1935	1937	1941	rBV3	695	483	0.03%	0.004%
54	7.320	1941	1953	1970	rBV	870872	1495976	83.49%	11.096%
55	7.574	2030	2032	2034	rBV	429	241	0.01%	0.002%
56	7.625	2038	2048	2069	rVV	169001	290512	16.21%	2.155%
57	7.760	2087	2090	2096	rVB2	1182	1142	0.06%	0.008%
58	7.789	2096	2099	2102	rBV2	679	467	0.03%	0.003%
59	7.944	2140	2147	2156	rBV4	6172	11703	0.65%	0.087%
60	8.095	2184	2194	2224	rBV	411086	716365	39.98%	5.313%
61	8.445	2301	2303	2308	rBV4	725	597	0.03%	0.004%
62	8.510	2320	2323	2328	rVB3	776	554	0.03%	0.004%
63	8.571	2340	2342	2345	rVB2	551	230	0.01%	0.002%
64	8.709	2382	2385	2388	rBV2	548	373	0.02%	0.003%
65	8.812	2414	2417	2419	rBV3	419	306	0.02%	0.002%
66	8.857	2419	2431	2456	rBV	814382	1290770	72.04%	9.574%
67	9.050	2489	2491	2496	rVV4	724	542	0.03%	0.004%
68	9.098	2500	2506	2510	rBV3	846	716	0.04%	0.005%
69	9.191	2532	2535	2538	rVB2	795	428	0.02%	0.003%
70	9.384	2593	2595	2596	rBV	555	208	0.01%	0.002%
71	9.513	2632	2635	2637	rVB2	422	239	0.01%	0.002%
72	9.526	2637	2639	2641	rBV	579	273	0.02%	0.002%
73	9.545	2641	2645	2646	rBV2	736	415	0.02%	0.003%
74	9.596	2658	2661	2665	rVB2	1071	630	0.04%	0.005%
75	9.635	2671	2673	2676	rBV3	429	244	0.01%	0.002%
76	9.686	2687	2689	2694	rVB3	523	331	0.02%	0.002%

Data Path : Z:\voasrv\HPCHEM1\MSVOA_V\Data\VW041321\
 Data File : VW020997.D
 Acq On : 13 Apr 2021 14:06
 Operator : SY/MD
 Sample : M1968-01
 Misc : 5.0mL/MSVOA_V/WATER
 ALS Vial : 12 Sample Multiplier: 1

Instrument :
 MSVOA_V
 ClientSampleId :
 BG3G8

Integration Parameters: LSCINT.P
 Integrator: RTE
 Smoothing : OFF Filtering: 5
 Sampling : 1 Min Area: 0 % of largest Peak
 Start Thrs: 0.2 Max Peaks: 100
 Stop Thrs : 0 Peak Location: TOP

If leading or trailing edge < 100 prefer < Baseline drop else tangent >
 Peak separation: 5

Method : Z:\voasrv\HPCHEM1\MSVOA_V\Method\SOMVLM041321WMA.M
 Title : VOC Analysis

77	9.725	2699	2701	2704	rBV3	516	341	0.02%	0.003%
78	9.796	2720	2723	2724	rBV3	332	173	0.01%	0.001%
79	9.995	2782	2785	2789	rVB	655	568	0.03%	0.004%
80	10.027	2789	2795	2796	rBV2	578	578	0.03%	0.004%
81	10.130	2820	2827	2837	rVB4	3809	6100	0.34%	0.045%
82	10.165	2837	2838	2843	rVB	351	189	0.01%	0.001%
83	10.223	2843	2856	2875	rBV	600755	935437	52.21%	6.938%
84	10.654	2988	2990	2991	rBV	481	235	0.01%	0.002%
85	10.786	3029	3031	3033	rBV	503	230	0.01%	0.002%
86	10.892	3062	3064	3066	rBV	448	231	0.01%	0.002%
87	10.924	3067	3074	3081	rVV7	3835	5284	0.29%	0.039%
88	11.156	3140	3146	3150	rBV3	1761	1725	0.10%	0.013%
89	11.255	3166	3177	3198	rBV	788442	1215205	67.82%	9.013%
90	11.529	3260	3262	3268	rBV3	606	683	0.04%	0.005%
91	11.632	3282	3294	3313	rBV	931100	1474368	82.29%	10.935%
92	12.034	3417	3419	3423	rVB2	613	401	0.02%	0.003%
93	12.062	3426	3428	3432	rVV2	617	373	0.02%	0.003%
94	12.358	3514	3520	3527	rVB7	3136	4144	0.23%	0.031%
95	12.886	3682	3684	3686	rBV	664	281	0.02%	0.002%
96	13.017	3722	3725	3728	rBV2	451	308	0.02%	0.002%
97	13.101	3747	3751	3757	rVB3	692	601	0.03%	0.004%
98	13.133	3759	3761	3763	rBV	514	268	0.01%	0.002%
99	13.349	3826	3828	3831	rVB2	744	359	0.02%	0.003%
100	13.860	3984	3987	3988	rBV2	794	414	0.02%	0.003%

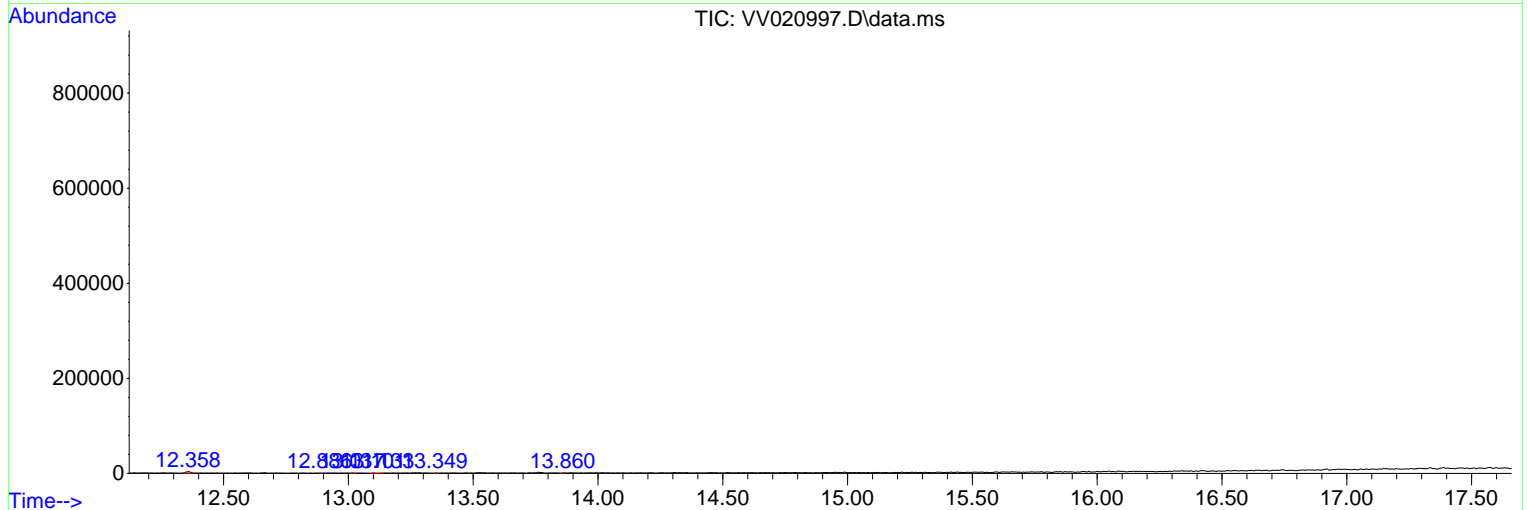
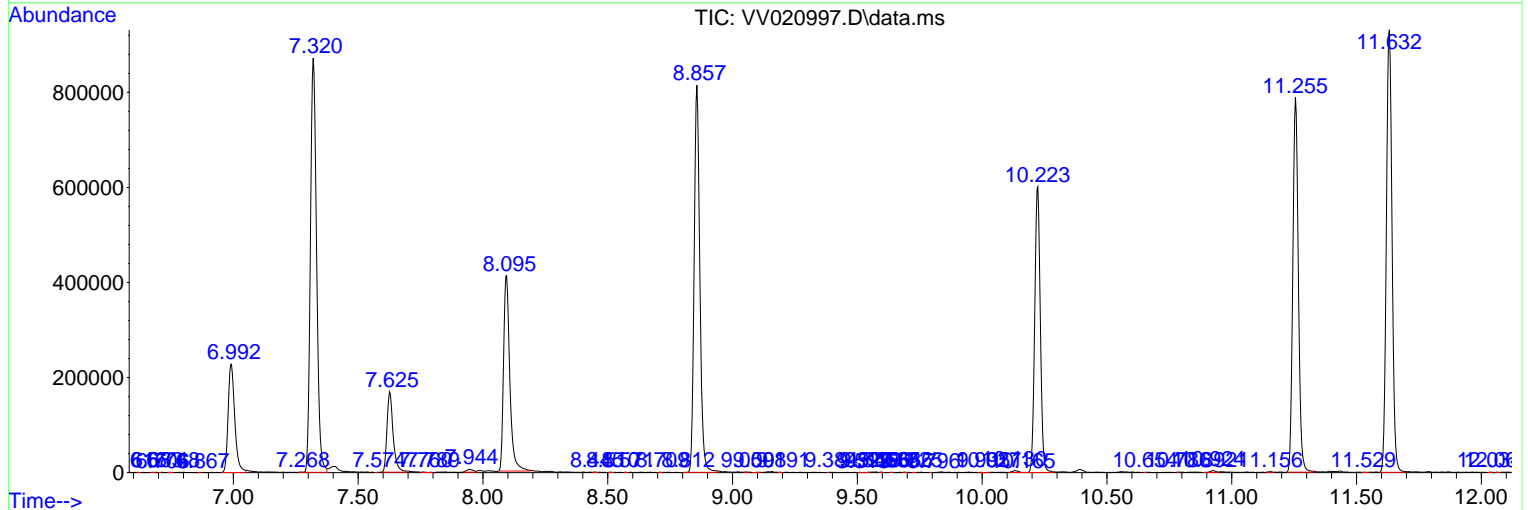
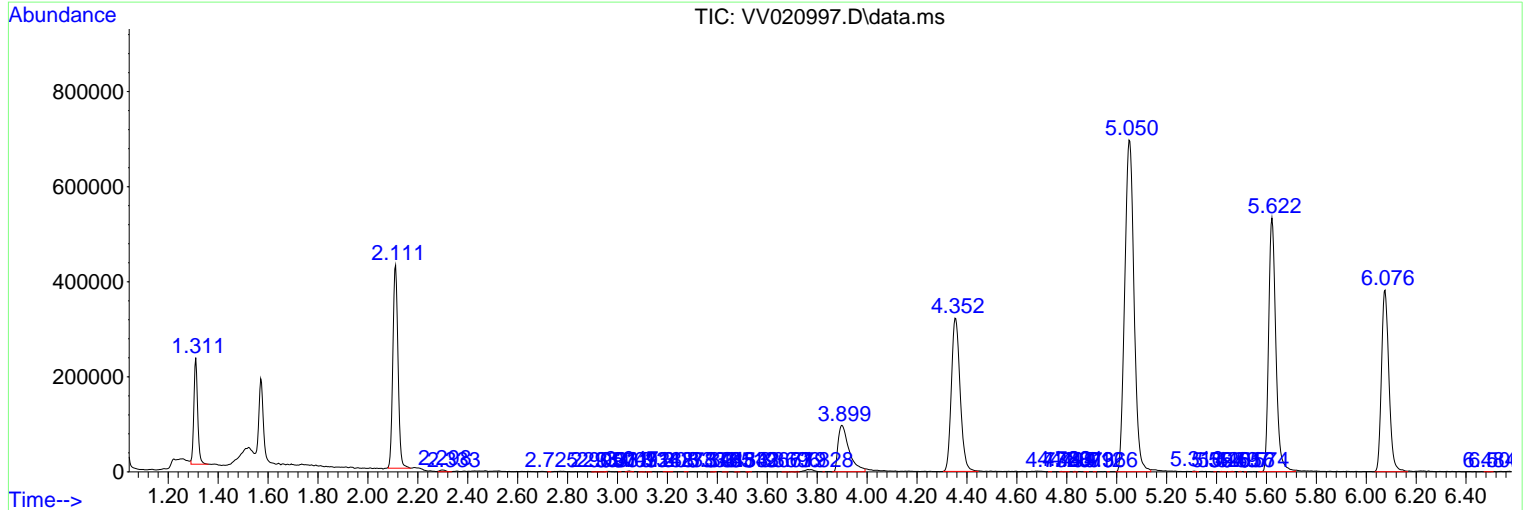
Sum of corrected areas: 13482720

Data Path : Z:\voasrv\HPCHEM1\MSVOA_V\Data\VV041321\
 Data File : VV020997.D
 Acq On : 13 Apr 2021 14:06
 Operator : SY/MD
 Sample : M1968-01
 Misc : 5.0mL/MSVOA_V/WATER
 ALS Vial : 12 Sample Multiplier: 1

Instrument :
 MSVOA_V
 ClientSampleId :
 BG3G8

Quant Method : Z:\voasrv\HPCHEM1\MSVOA_V\Method\SOMVLM041321WMA.M
 Quant Title : VOC Analysis

TIC Library : C:\DATABASE\NIST11.L
 TIC Integration Parameters: LSCINT.P



Data Path : Z:\voasrv\HPCHEM1\MSVOA_V\Data\VW041321\
Data File : VW020997.D
Acq On : 13 Apr 2021 14:06
Operator : SY/MD
Sample : M1968-01
Misc : 5.0mL/MSVOA_V/WATER
ALS Vial : 12 Sample Multiplier: 1

Instrument :
MSVOA_V
ClientSampleId :
BG3G8

Quant Method : Z:\voasrv\HPCHEM1\MSVOA_V\Method\SOMVLM041321WMA.M
Quant Title : VOC Analysis

TIC Library : C:\DATABASE\NIST11.L
TIC Integration Parameters: LSCINT.P

No Library Search Compounds Detected

Data Path : Z:\voasrv\HPCHEM1\MSVOA_V\Data\VV041321\
Data File : VV020997.D
Acq On : 13 Apr 2021 14:06
Operator : SY/MD
Sample : M1968-01
Misc : 5.0mL/MSVOA_V/WATER
ALS Vial : 12 Sample Multiplier: 1

Instrument :
MSVOA_V
ClientSampled :
BG3G8

Quant Method : Z:\voasrv\HPCHEM1\MSVOA_V\Method\SOMVLM041321WMA.M
Quant Title : VOC Analysis

TIC Library : C:\DATABASE\NIST11.L
TIC Integration Parameters: LSCINT.P

TIC Top Hit name	RT	EstConc	Units	Response	--Internal Standard--		
					#	RT	Resp Conc
