

Data Path : Z:\voasrv\HPCHEM1\MSVOA_V\Data\VV041323\
 Data File : VV030536.D
 Acq On : 13 Apr 2023 11:35
 Operator : SY/MD
 Sample : 02250-07
 Misc : 25.0mL/MSVOA_V/WATER
 ALS Vial : 6 Sample Multiplier: 1

Instrument :
 MSVOA_V
 ClientSampleId :
 BHDx8

Integration Parameters: rteint.p
 Integrator: RTE
 Smoothing : ON Filtering: 5
 Sampling : 1 Min Area: 3 % of largest Peak
 Start Thrs: 0.1 Max Peaks: 100
 Stop Thrs : 0 Peak Location: TOP

If leading or trailing edge < 100 prefer < Baseline drop else tangent >
 Peak separation: 5

Method : Z:\voasrv\HPCHEM1\MSVOA_V\Method\SFAMVTR032323WMA.M
 Title : TRACE VOA SFAM1.0

Signal : TIC: VV030536.D\data.ms

peak #	R.T. min	first scan	max scan	last scan	PK TY	peak height	corr. area	corr. % max.	% of total
1	1.278	65	74	89	rBV	76320	89202	19.98%	2.320%
2	1.535	145	154	166	rBV	66402	79353	17.77%	2.064%
3	2.063	308	318	331	rBV	137259	199333	44.65%	5.185%
4	3.838	857	870	901	rBV2	27301	134403	30.11%	3.496%
5	4.259	986	1001	1021	rBV2	85221	213472	47.82%	5.553%
6	4.966	1206	1221	1242	rBV2	176250	446443	100.00%	11.613%
7	5.542	1387	1400	1422	rBV2	140596	302463	67.75%	7.868%
8	5.998	1528	1542	1562	rBV	105610	223146	49.98%	5.804%
9	6.924	1818	1830	1842	rBV	42773	84078	18.83%	2.187%
10	7.252	1919	1932	1945	rBV	195577	350086	78.42%	9.106%
11	7.326	1946	1955	1970	rVB2	56791	106981	23.96%	2.783%
12	7.564	2020	2029	2043	rBV2	26514	47521	10.64%	1.236%
13	8.037	2166	2176	2205	rBV	164074	361405	80.95%	9.401%
14	8.792	2400	2411	2438	rBV	219313	377135	84.48%	9.810%
15	9.014	2471	2480	2488	rVV	2880	5415	1.21%	0.141%
16	10.162	2826	2837	2856	rVB	74700	124019	27.78%	3.226%
17	10.333	2878	2890	2902	rBV2	14323	24409	5.47%	0.635%
18	11.194	3147	3158	3178	rBV	207980	336473	75.37%	8.752%
19	11.570	3262	3275	3295	rBV2	183132	299702	67.13%	7.796%
20	12.204	3466	3472	3482	rVB2	3964	6608	1.48%	0.172%
21	12.297	3488	3501	3511	rBV10	13787	25188	5.64%	0.655%
22	12.635	3594	3606	3614	rVB10	3644	7583	1.70%	0.197%

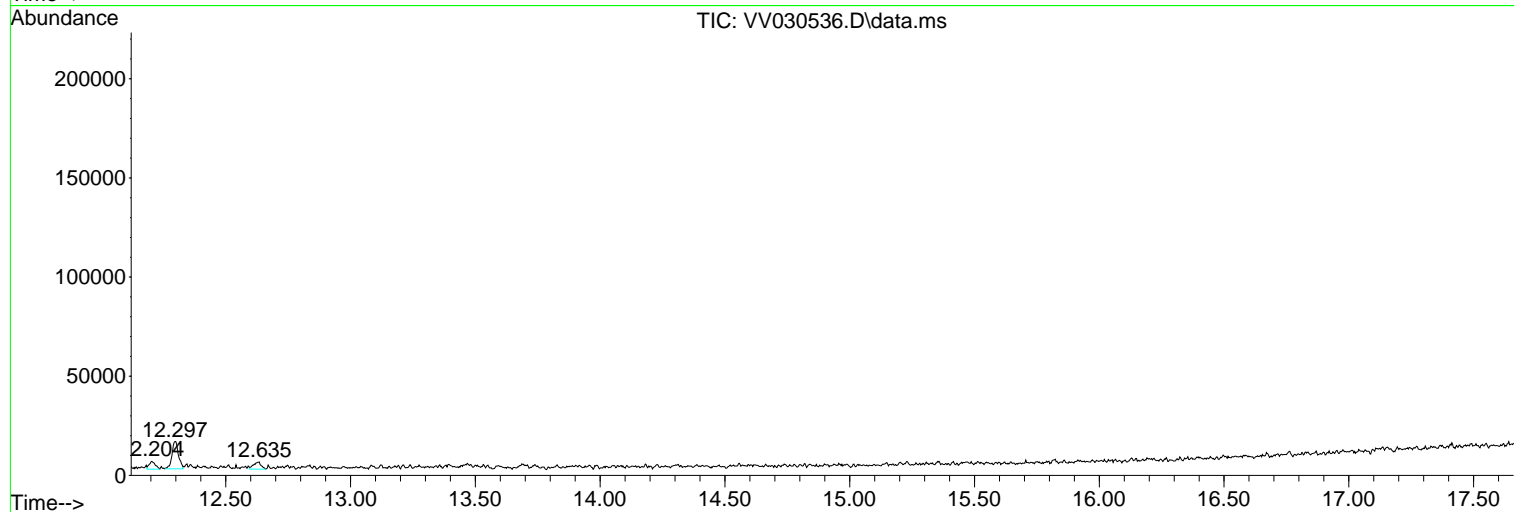
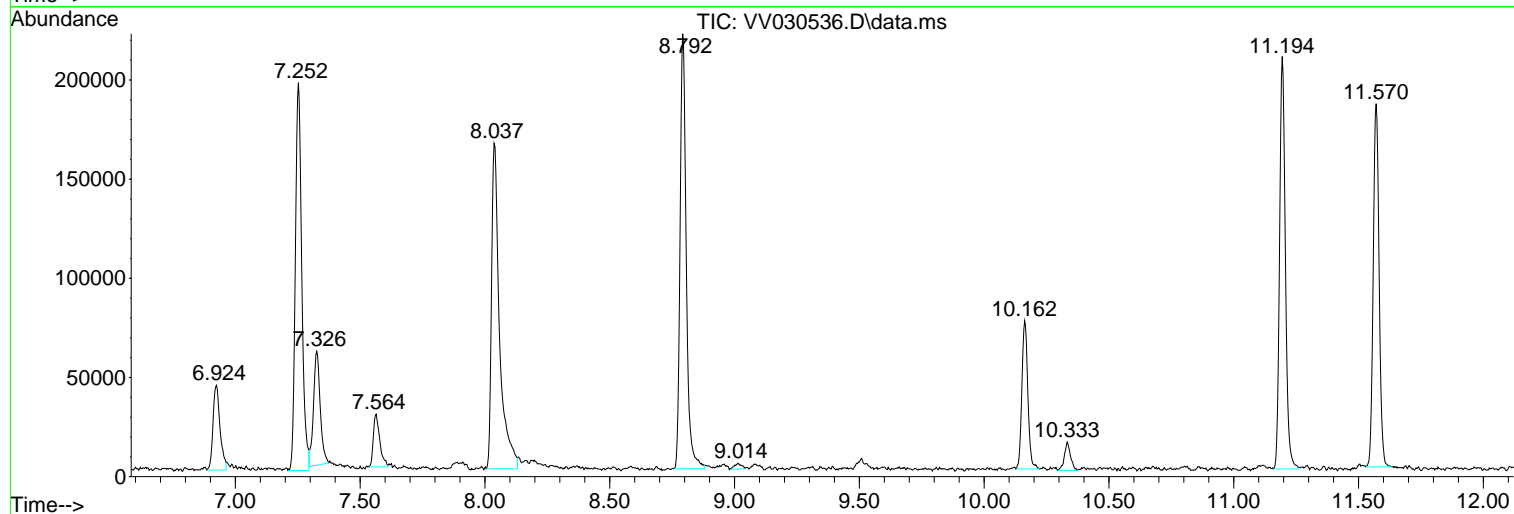
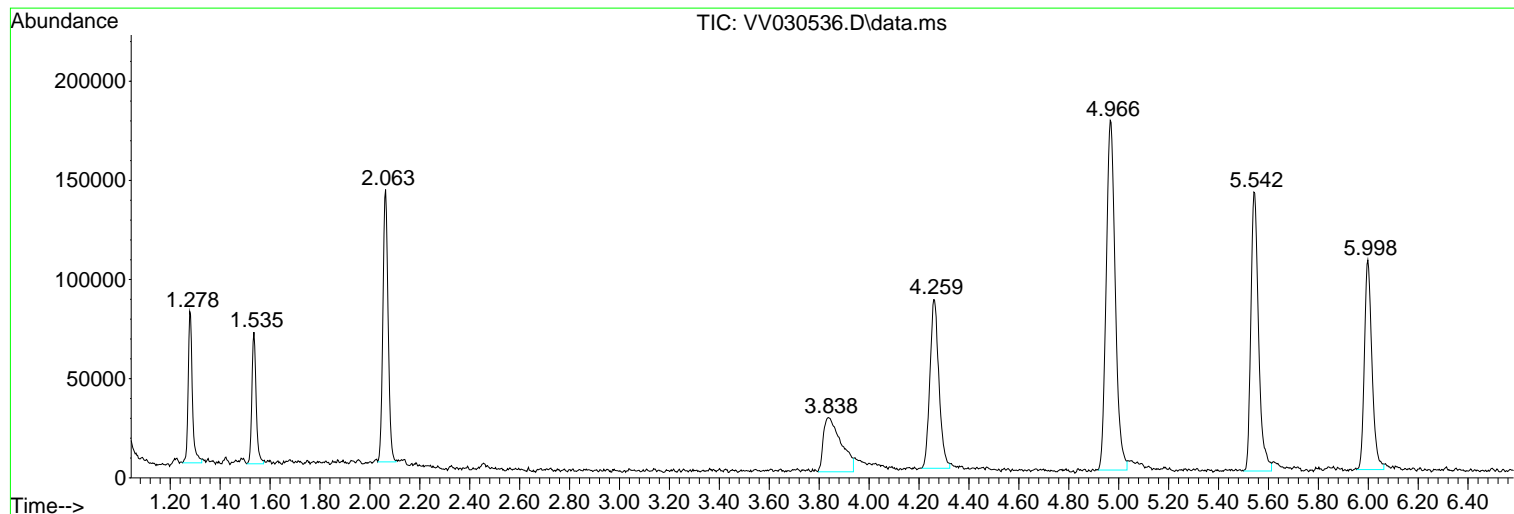
Sum of corrected areas: 3844418

Data Path : Z:\voasrv\HPCHEM1\MSVOA_V\Data\VV041323\
Data File : VV030536.D
Acq On : 13 Apr 2023 11:35
Operator : SY/MD
Sample : 02250-07
Misc : 25.0mL/MSVOA_V/WATER
ALS Vial : 6 Sample Multiplier: 1

Instrument :
MSVOA_V
ClientSampleId :
BHDx8

Quant Method : Z:\voasrv\HPCHEM1\MSVOA_V\Method\SFAMVTR032323WMA.M
Quant Title : TRACE VOA SFAM1.0

TIC Library : C:\Database\NIST20.L
TIC Integration Parameters: LSCINT.P



Library Search Compound Report

Data Path : Z:\voasrv\HPCHEM1\MSVOA_V\Data\VV041323\
Data File : VV030536.D
Acq On : 13 Apr 2023 11:35
Operator : SY/MD
Sample : 02250-07
Misc : 25.0mL/MSVOA_V/WATER
ALS Vial : 6 Sample Multiplier: 1

Instrument :
MSVOA_V
ClientSampleId :
BHDx8

Quant Method : Z:\voasrv\HPCHEM1\MSVOA_V\Method\SFAMVTR032323WMA.M
Quant Title : TRACE VOA SFAM1.0

TIC Library : C:\Database\NIST20.L
TIC Integration Parameters: LSCINT.P

No Library Search Compounds Detected

Data Path : Z:\voasrv\HPCHEM1\MSVOA_V\Data\VV041323\
Data File : VV030536.D
Acq On : 13 Apr 2023 11:35
Operator : SY/MD
Sample : 02250-07
Misc : 25.0mL/MSVOA_V/WATER
ALS Vial : 6 Sample Multiplier: 1

Instrument :
MSVOA_V
ClientSampleId :
BHDx8

Quant Method : Z:\voasrv\HPCHEM1\MSVOA_V\Method\SFAMVTR032323WMA.M
Quant Title : TRACE VOA SFAM1.0

TIC Library : C:\Database\NIST0.L
TIC Integration Parameters: LSCINT.P

TIC Top Hit name	RT	EstConc	Units	Response	--Internal Standard--		
					#	RT	Resp Conc
