

Data Path : Z:\voasrv\HPCHEM1\MSVOA_V\Data\VW041423\
 Data File : VW030574.D
 Acq On : 14 Apr 2023 15:34
 Operator : SY/MD
 Sample : 02275-10
 Misc : 25.0mL/MSVOA_V/WATER
 ALS Vial : 17 Sample Multiplier: 1

Instrument :
 MSVOA_V
 ClientSampleId :
 BHDZ5

Quant Time: Apr 15 02:02:09 2023
 Quant Method : Z:\voasrv\HPCHEM1\MSVOA_V\Method\SFAMVTR032323WMA.M
 Quant Title : TRACE VOA SFAM1.0
 QLast Update : Sat Apr 15 01:54:33 2023
 Response via : Initial Calibration

Compound	R.T.	QIon	Response	Conc	Units	Dev(Min)

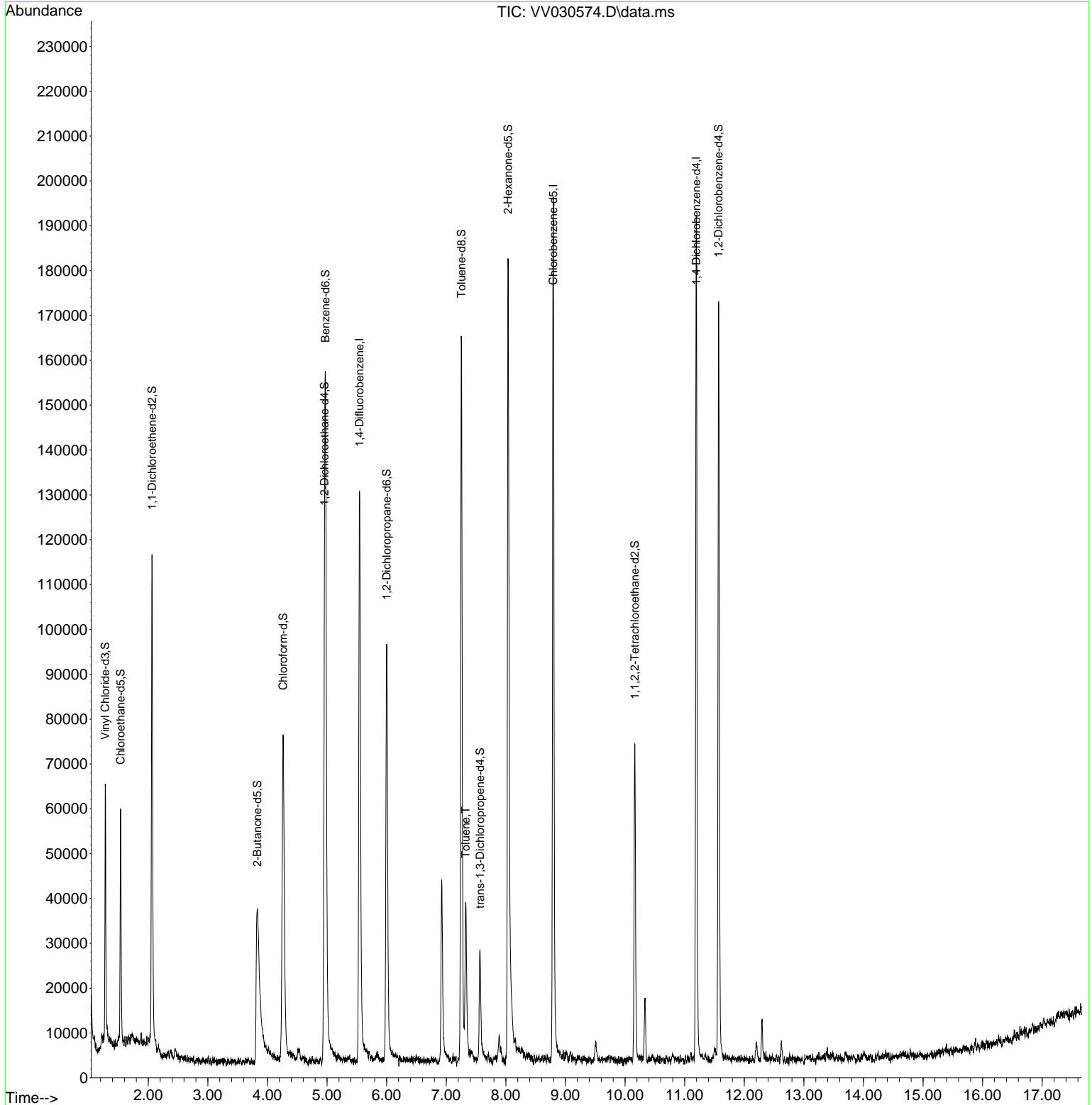
Internal Standards						
1) 1,4-Difluorobenzene	5.545	114	107431	5.000	ug/L	0.00
28) Chlorobenzene-d5	8.796	117	104022	5.000	ug/L	0.00
58) 1,4-Dichlorobenzene-d4	11.194	152	49413	5.000	ug/L	0.00
System Monitoring Compounds						
4) Vinyl Chloride-d3	1.278	65	39134	5.500	ug/L	0.00
Spiked Amount	5.000	Range 40 - 130	Recovery	=	110.000%	
7) Chloroethane-d5	1.536	69	31502	4.562	ug/L	0.00
Spiked Amount	5.000	Range 65 - 130	Recovery	=	91.200%	
11) 1,1-Dichloroethene-d2	2.063	63	59897	3.548	ug/L	0.00
Spiked Amount	5.000	Range 60 - 125	Recovery	=	71.000%	
20) 2-Butanone-d5	3.828	46	85582	46.536	ug/L	0.01
Spiked Amount	50.000	Range 40 - 130	Recovery	=	93.080%	
24) Chloroform-d	4.262	84	75755	4.399	ug/L	0.00
Spiked Amount	5.000	Range 70 - 125	Recovery	=	88.000%	
26) 1,2-Dichloroethane-d4	4.957	65	41902	5.157	ug/L	0.00
Spiked Amount	5.000	Range 70 - 130	Recovery	=	103.200%	
32) Benzene-d6	4.973	84	130899	4.466	ug/L	0.00
Spiked Amount	5.000	Range 70 - 125	Recovery	=	89.400%	
36) 1,2-Dichloropropane-d6	6.002	67	42437	4.624	ug/L	0.00
Spiked Amount	5.000	Range 60 - 140	Recovery	=	92.400%	
41) Toluene-d8	7.256	98	108433	4.028	ug/L	0.00
Spiked Amount	5.000	Range 70 - 130	Recovery	=	80.600%	
43) trans-1,3-Dichloroprop...	7.567	79	14921	4.318	ug/L	0.00
Spiked Amount	5.000	Range 55 - 130	Recovery	=	86.400%	
46) 2-Hexanone-d5	8.037	63	64245	46.272	ug/L	0.00
Spiked Amount	50.000	Range 45 - 130	Recovery	=	92.540%	
56) 1,1,2,2-Tetrachloroeth...	10.165	84	32959	4.557	ug/L	0.00
Spiked Amount	5.000	Range 65 - 120	Recovery	=	91.200%	
66) 1,2-Dichlorobenzene-d4	11.570	152	43159	4.887	ug/L	0.00
Spiked Amount	5.000	Range 80 - 120	Recovery	=	97.800%	
Target Compounds						
42) Toluene	7.326	91	24200	0.615	ug/L	100

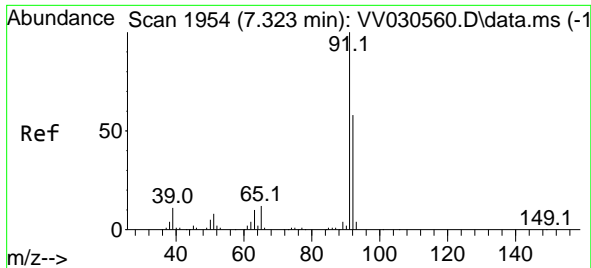
(#) = qualifier out of range (m) = manual integration (+) = signals summed

Data Path : Z:\voasrv\HPCHEM1\MSVOA_V\Data\VV041423\
 Data File : VV030574.D
 Acq On : 14 Apr 2023 15:34
 Operator : SY/MD
 Sample : 02275-10
 Misc : 25.0mL/MSVOA_V/WATER
 ALS Vial : 17 Sample Multiplier: 1

Instrument :
 MSVOA_V
 ClientSampleId :
 BHDZ5

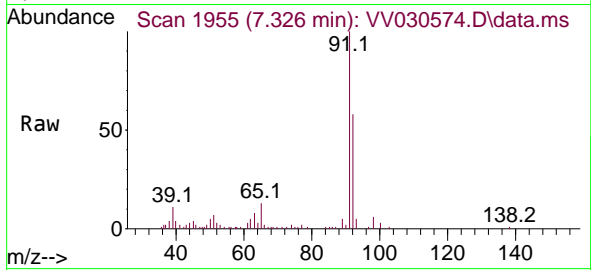
Quant Time: Apr 15 02:02:09 2023
 Quant Method : Z:\voasrv\HPCHEM1\MSVOA_V\Method\SFAMVTR032323WMA.M
 Quant Title : TRACE VOA SFAM1.0
 QLast Update : Sat Apr 15 01:54:33 2023
 Response via : Initial Calibration





#42
 Toluene
 Concen: 0.615 ug/L
 RT: 7.326 min Scan# 1955
 Delta R.T. 0.003 min
 Lab File: VV030574.D
 Acq: 14 Apr 2023 15:34

Instrument : MSVOA_V
 ClientSampleId : BHDZ5



Tgt Ion: 91 Resp: 24200
 Ion Ratio Lower Upper
 91 100
 92 57.6 40.4 75.0

