

Data Path : Z:\voasrv\HPCHEM1\MSVOA_V\Data\VV041624\
 Data File : VV035228.D
 Acq On : 16 Apr 2024 10:25
 Operator : SY/MD
 Sample : P2032-08DL 10X
 Misc : 25.0mL/MSVOA_V/WATER
 ALS Vial : 5 Sample Multiplier: 1

Instrument :
 MSVOA_V
 ClientSampleId :
 E0MF4DL

Integration Parameters: rteint.p

Integrator: RTE

Smoothing : ON

Filtering: 5

Sampling : 1

Min Area: 3 % of largest Peak

Start Thrs: 0.1

Max Peaks: 100

Stop Thrs : 0

Peak Location: TOP

If leading or trailing edge < 100 prefer < Baseline drop else tangent >

Peak separation: 5

Method : Z:\voasrv\HPCHEM1\MSVOA_V\Method\SFAMVTR041524WMA.M

Title : TRACE VOA SFAM1.0

Signal : TIC: VV035228.D\data.ms

peak #	R.T. min	first scan	max scan	last scan	PK TY	peak height	corr. area	corr. % max.	% of total
1	1.085	8	14	33	rVB	210376	206645	23.37%	3.007%
2	1.188	38	46	54	rBV	50109	49086	5.55%	0.714%
3	1.278	66	74	89	rVB	148778	160982	18.20%	2.342%
4	1.532	144	153	165	rBV	105065	125305	14.17%	1.823%
5	1.594	167	172	179	rVB	9631	10739	1.21%	0.156%
6	2.057	305	316	331	rBV	208630	303542	34.32%	4.416%
7	2.446	424	437	455	rBV	42070	74446	8.42%	1.083%
8	2.696	504	515	530	rBV2	11090	21214	2.40%	0.309%
9	3.812	849	862	923	rBV2	279453	884394	100.00%	12.868%
10	4.246	981	997	1023	rBV2	124931	325330	36.79%	4.733%
11	4.953	1203	1217	1258	rBV2	283230	742565	83.96%	10.804%
12	5.532	1383	1397	1429	rBV	212789	463657	52.43%	6.746%
13	5.989	1526	1539	1568	rBV	164341	362414	40.98%	5.273%
14	6.915	1817	1827	1860	rBV	62792	136701	15.46%	1.989%
15	7.243	1916	1929	1963	rBV	301647	564333	63.81%	8.211%
16	7.561	2017	2028	2044	rBV2	35931	74886	8.47%	1.090%
17	8.031	2164	2174	2211	rBV	245995	609576	68.93%	8.869%
18	8.783	2396	2408	2439	rBV	341180	589392	66.64%	8.575%
19	10.153	2821	2834	2854	rBV	124881	202284	22.87%	2.943%
20	11.185	3144	3155	3178	rBV	307935	498974	56.42%	7.260%
21	11.561	3260	3272	3301	rBV	280178	466585	52.76%	6.789%

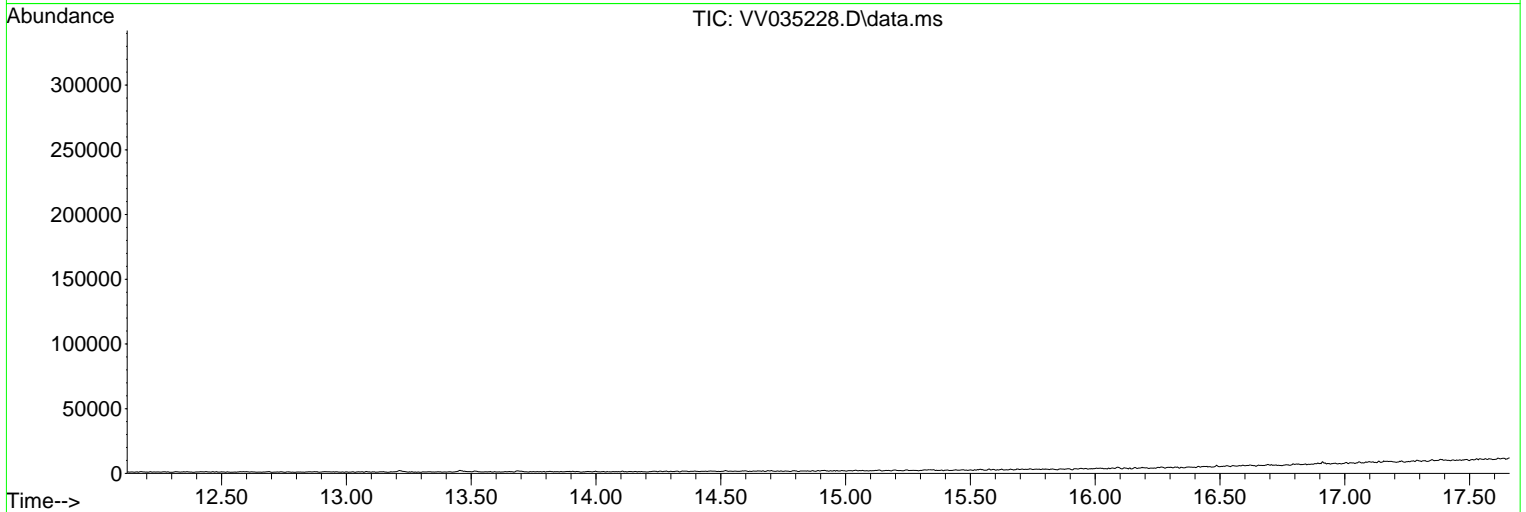
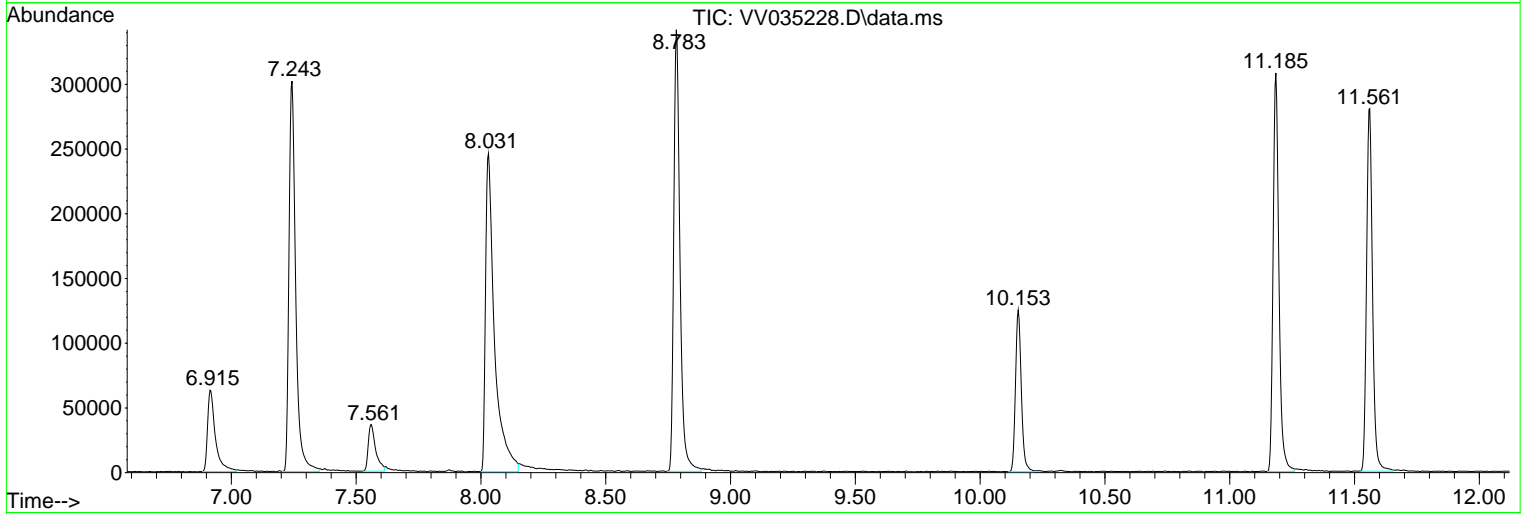
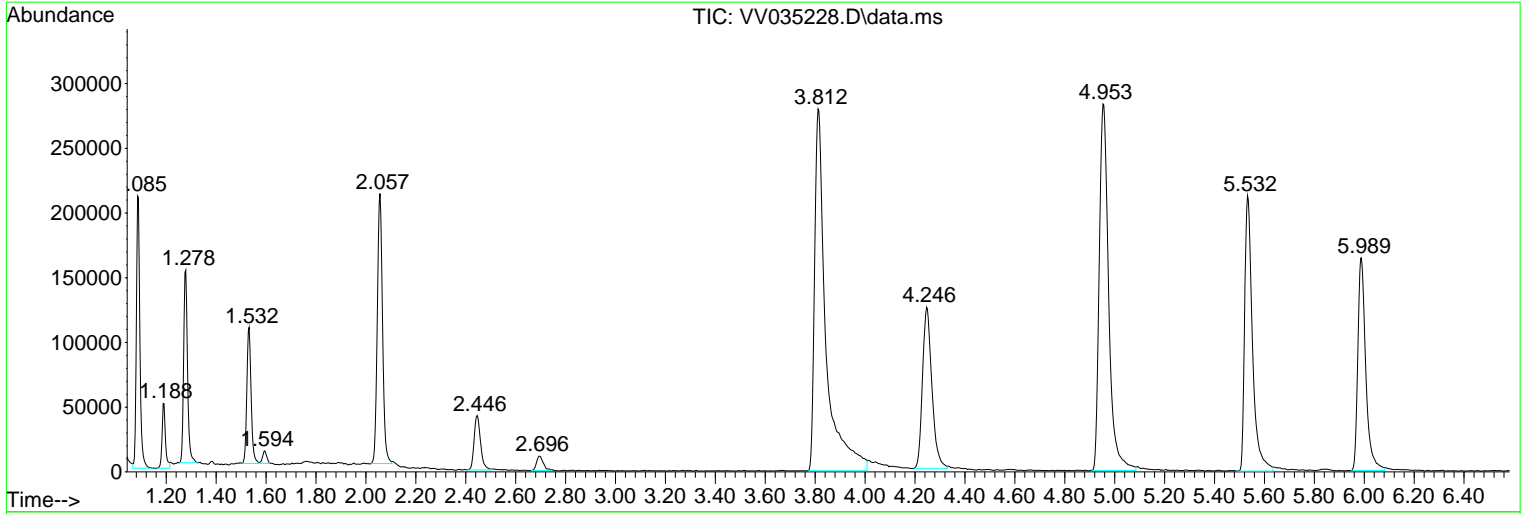
Sum of corrected areas: 6873050

Data Path : Z:\voasrv\HPCHEM1\MSVOA_V\Data\VV041624\
 Data File : VV035228.D
 Acq On : 16 Apr 2024 10:25
 Operator : SY/MD
 Sample : P2032-08DL 10X
 Misc : 25.0mL/MSVOA_V/WATER
 ALS Vial : 5 Sample Multiplier: 1

Instrument :
 MSVOA_V
 ClientSampleId :
 E0MF4DL

Quant Method : Z:\voasrv\HPCHEM1\MSVOA_V\Method\SFAMVTR041524WMA.M
 Quant Title : TRACE VOA SFAM1.0

TIC Library : C:\Database\NIST20.L
 TIC Integration Parameters: LSCINT.P



Data Path : Z:\voasrv\HPCHEM1\MSVOA_V\Data\VV041624\
 Data File : VV035228.D
 Acq On : 16 Apr 2024 10:25
 Operator : SY/MD
 Sample : P2032-08DL 10X
 Misc : 25.0mL/MSVOA_V/WATER
 ALS Vial : 5 Sample Multiplier: 1

Instrument :
 MSVOA_V
 ClientSampleId :
 E0MF4DL

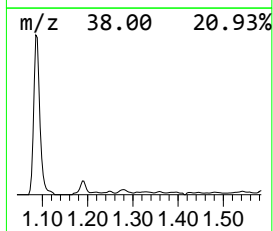
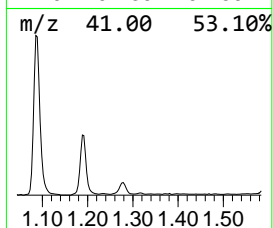
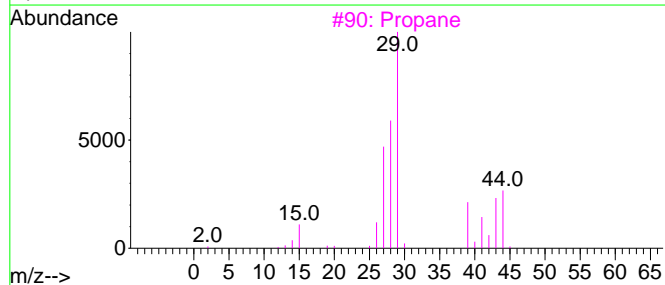
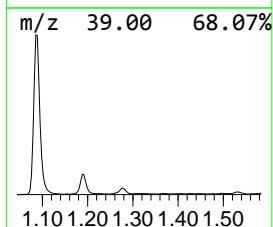
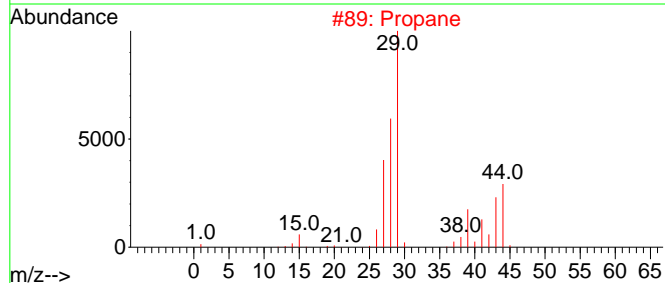
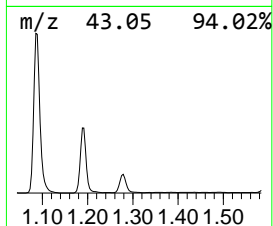
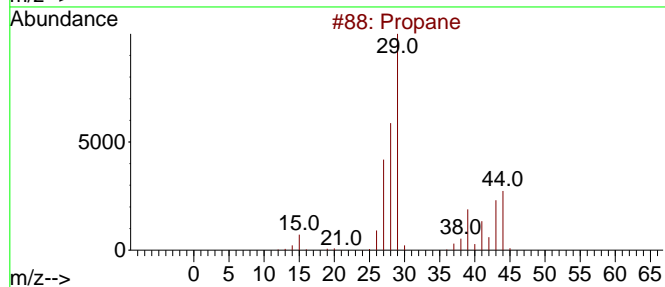
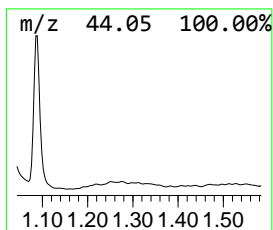
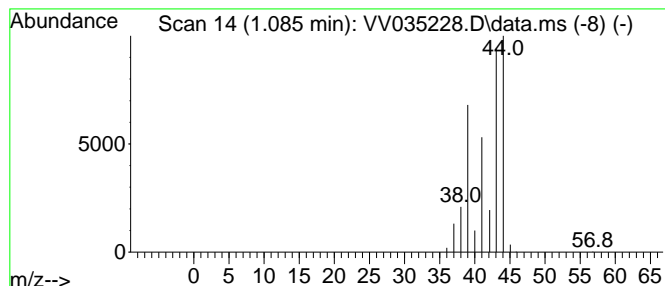
Quant Method : Z:\voasrv\HPCHEM1\MSVOA_V\Method\SFAMVTR041524WMA.M
 Quant Title : TRACE VOA SFAM1.0

TIC Library : C:\Database\NIST20.L
 TIC Integration Parameters: LSCINT.P

 Peak Number 1 (DEL) Alkane: Straight-Chai... Concentration Rank 1

R.T.	EstConc	Area	Relative to ISTD	R.T.
1.085	2.23 ug/L	206645	1,4-Difluorobenzene	5.532

Hit#	of	Tentative ID	MW	MolForm	CAS#	Qual
1	5	Propane	44	C3H8	000074-98-6	90
2		Propane	44	C3H8	000074-98-6	83
3		Propane	44	C3H8	000074-98-6	9
4		Propene	42	C3H6	000115-07-1	9
5		Acetaldehyde	44	C2H4O	000075-07-0	5



Data Path : Z:\voasrv\HPCHEM1\MSVOA_V\Data\VV041624\
 Data File : VV035228.D
 Acq On : 16 Apr 2024 10:25
 Operator : SY/MD
 Sample : P2032-08DL 10X
 Misc : 25.0mL/MSVOA_V/WATER
 ALS Vial : 5 Sample Multiplier: 1

Instrument :
 MSVOA_V
 ClientSampleId :
 E0MF4DL

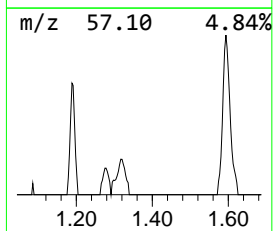
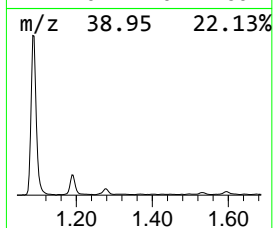
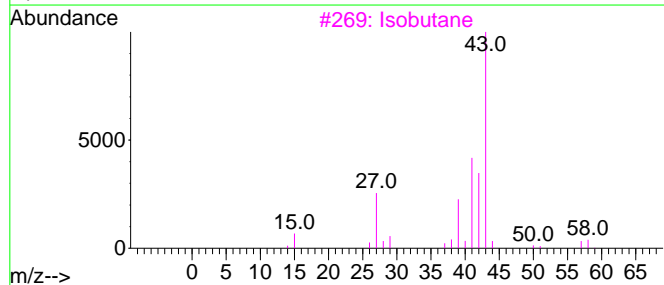
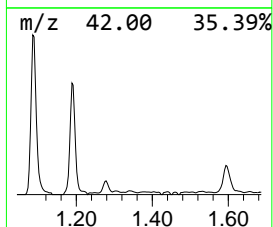
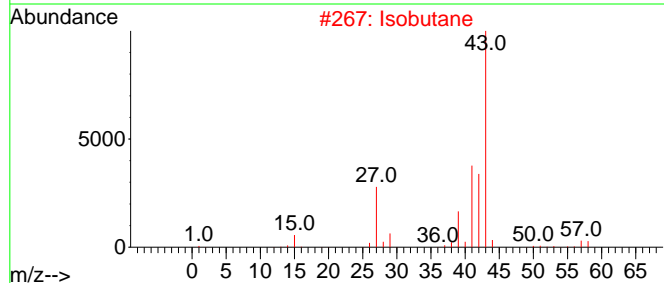
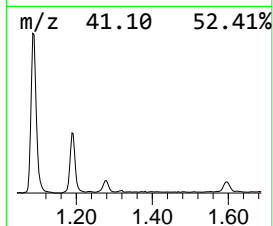
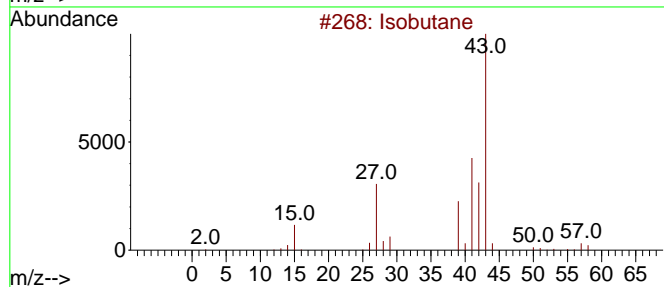
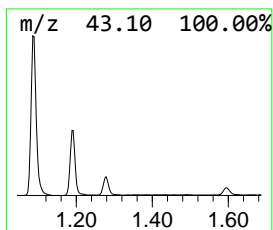
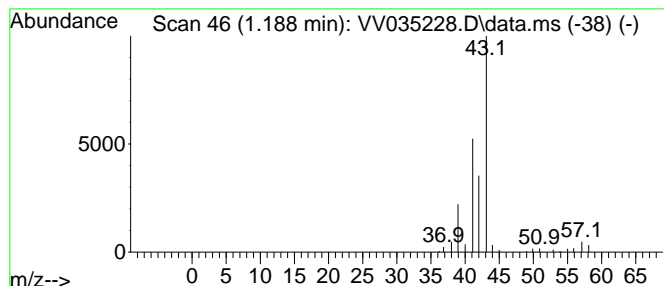
Quant Method : Z:\voasrv\HPCHEM1\MSVOA_V\Method\SFAMVTR041524WMA.M
 Quant Title : TRACE VOA SFAM1.0

TIC Library : C:\Database\NIST20.L
 TIC Integration Parameters: LSCINT.P

 Peak Number 2 (DEL) Alkane: Straight-Chai... Concentration Rank 3

R.T.	EstConc	Area	Relative to ISTD	R.T.
1.188	0.53 ug/L	49086	1,4-Difluorobenzene	5.532

Hit#	of 5	Tentative ID	MW	MolForm	CAS#	Qual
1		Isobutane	58	C4H10	000075-28-5	64
2		Isobutane	58	C4H10	000075-28-5	64
3		Isobutane	58	C4H10	000075-28-5	64
4		Isobutane	58	C4H10	000075-28-5	64
5		Isobutane	58	C4H10	000075-28-5	42



Data Path : Z:\voasrv\HPCHEM1\MSVOA_V\Data\VV041624\
Data File : VV035228.D
Acq On : 16 Apr 2024 10:25
Operator : SY/MD
Sample : P2032-08DL 10X
Misc : 25.0mL/MSVOA_V/WATER
ALS Vial : 5 Sample Multiplier: 1

Instrument :
MSVOA_V
ClientSampleId :
E0MF4DL

Quant Method : Z:\voasrv\HPCHEM1\MSVOA_V\Method\SFAMVTR041524WMA.M
Quant Title : TRACE VOA SFAM1.0

TIC Library : C:\Database\NIST20.L
TIC Integration Parameters: LSCINT.P

TIC Top Hit name	RT	EstConc	Units	Response	--Internal Standard--			
					#	RT	Resp	Conc
(DEL) Alkane: S...	1.085	2.2	ug/L	206645	1	5.532	463657	5.0
(DEL) Alkane: S...	1.188	0.5	ug/L	49086	1	5.532	463657	5.0