

Data Path : Z:\VOASRV\HPCHEM1\MSVOA V\DATA\VV041720\  
 Data File : VV015555.D  
 Acq On : 17 Apr 2020 15:14  
 Operator : SY/MD  
 Sample : L2288-02  
 Misc : 25.0mL/MSVOA V/WATER  
 ALS Vial : 13 Sample Multiplier: 1

Instrument :  
 MSVOA\_V  
 ClientSampled :

Quant Time: Apr 18 00:41:01 2020  
 Quant Method : Z:\VOASRV\HPCHEM1\MSVOA\_V\METHOD\SOMVTR040920WMA.M  
 Quant Title : TRACE VOA SOM01.0  
 QLast Update : Sat Apr 18 00:37:52 2020  
 Response via : Initial Calibration

Internal Standards	R.T.	QIon	Response	Conc	Units	Dev(Min)
1) 1,4-Difluorobenzene	0.00	114	0	0.00	ug/L	-5.64
28) Chlorobenzene-d5	8.88	117	401	5.00	ug/L	0.00
60) 1,4-Dichlorobenzene-d4	11.28	152	570	5.00	ug/L	0.00

System Monitoring Compounds

4) Vinyl Chloride-d3	0.00	65	0	0.00	ug/L	
Spiked Amount	5.000	Range	40 - 130	Recovery	=	0.00%#
7) Chloroethane-d5	1.85	69	20	0.00	ug/L	0.27
Spiked Amount	5.000	Range	65 - 130	Recovery	=	0.00%#
11) 1,1-Dichloroethene-d2	2.12	63	174	0.00	ug/L	0.00
Spiked Amount	5.000	Range	60 - 125	Recovery	=	0.00%#
20) 2-Butanone-d5	0.00	46	0	0.00	ug/L	
Spiked Amount	50.000	Range	40 - 130	Recovery	=	0.00%#
24) Chloroform-d	4.40	84	156	0.00	ug/L	0.03
Spiked Amount	5.000	Range	70 - 125	Recovery	=	0.00%#
26) 1,2-Dichloroethane-d4	0.00	65	0	0.00	ug/L	
Spiked Amount	5.000	Range	70 - 130	Recovery	=	0.00%#
32) Benzene-d6	0.00	84	0	0.00	ug/L	
Spiked Amount	5.000	Range	70 - 125	Recovery	=	0.00%#
36) 1,2-Dichloropropane-d6	5.94	67	19	0.69	ug/L	-0.15
Spiked Amount	5.000	Range	60 - 140	Recovery	=	13.80%#
41) Toluene-d8	0.00	98	0	0.00	ug/L	
Spiked Amount	5.000	Range	70 - 130	Recovery	=	0.00%#
43) trans-1,3-Dichloropropene-	0.00	79	0	0.00	ug/L	
Spiked Amount	5.000	Range	55 - 130	Recovery	=	0.00%#
46) 2-Hexanone-d5	0.00	63	0	0.00	ug/L	
Spiked Amount	50.000	Range	45 - 130	Recovery	=	0.00%#
57) 1,1,2,2-Tetrachloroethane-	0.00	84	0	0.00	ug/L	
Spiked Amount	5.000	Range	65 - 120	Recovery	=	0.00%#
64) 1,2-Dichlorobenzene-d4	11.65	152	330	3.61	ug/L	0.00
Spiked Amount	5.000	Range	80 - 120	Recovery	=	72.20%#

Target Compounds

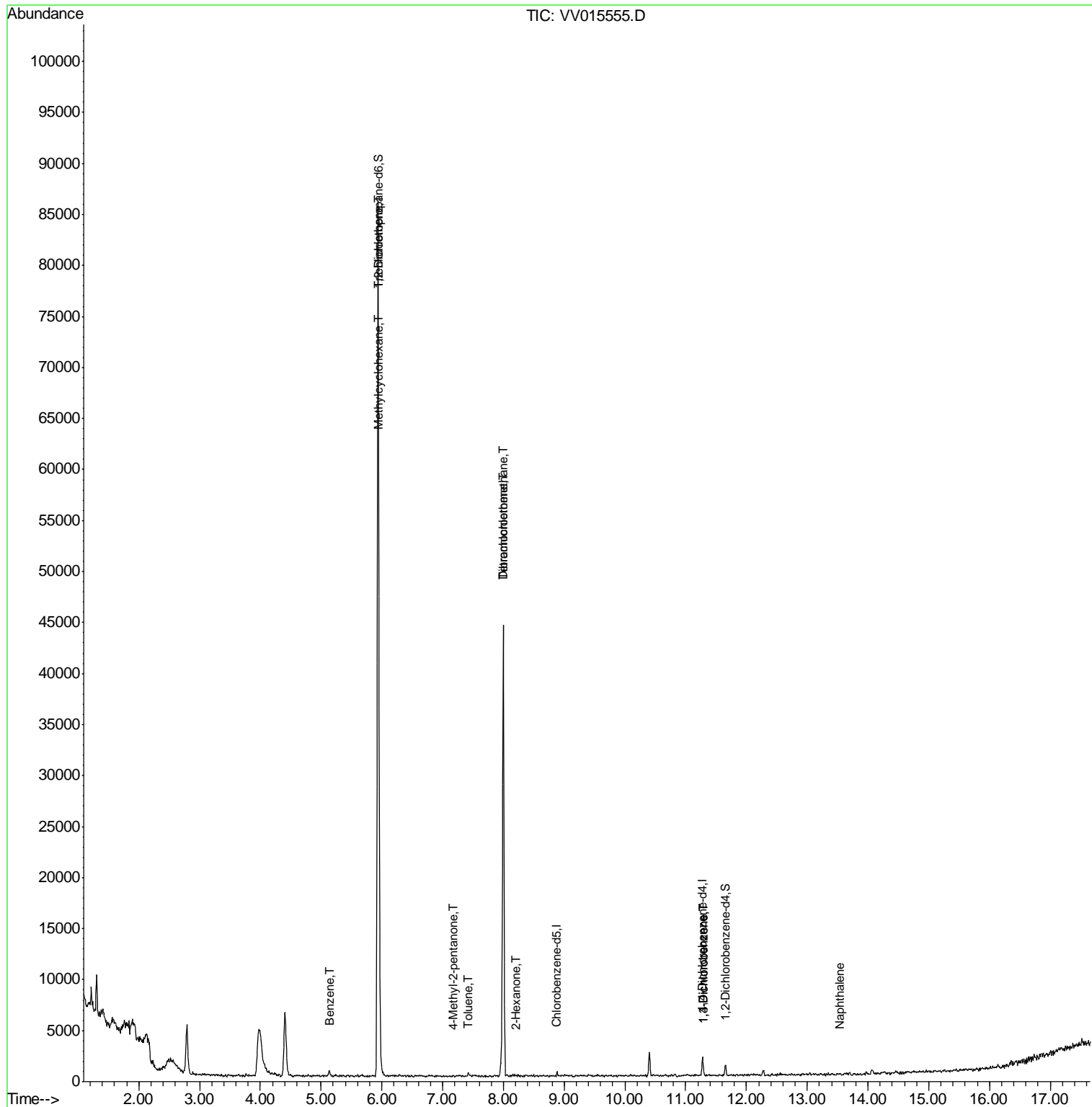
Target Compounds	R.T.	QIon	Response	Conc	Units	Ovalue
33) Benzene	5.13	78	694	5.782	ug/L	100
34) Trichloroethene	5.94	95	29494	913.014	ug/L	99
35) Methylcyclohexane	5.96	83	136	2.499	ug/L #	15
40) 4-Methyl-2-pentanone	7.17	43	20	1.023	ug/L #	46
42) Toluene	7.42	91	289	2.218	ug/L	89
47) Tetrachloroethene	8.00	164	9142	381.971	ug/L	95
48) 2-Hexanone	8.20	43	174	12.741	ug/L #	40
49) Dibromochloromethane	8.00	129	8835	368.600	ug/L #	10
62) 1,3-Dichlorobenzene	11.30	146	157	0.854	ug/L #	26
63) 1,4-Dichlorobenzene	11.30	146	157	0.840	ug/L #	25
69) Naphthalene	13.53	128	20	0.089	ug/L #	69

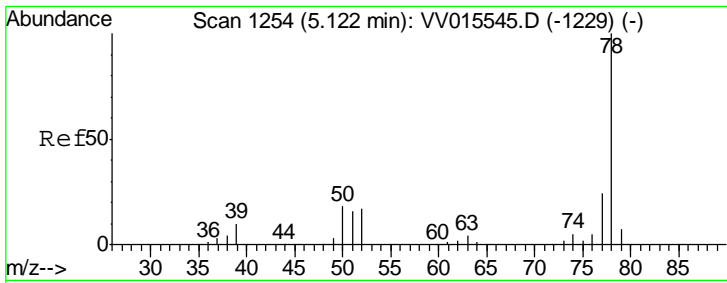
(#) = qualifier out of range (m) = manual integration (+) = signals summed

Data Path : Z:\VOASRV\HPCHEM1\MSVOA V\DATA\VV041720\  
 Data File : VV015555.D  
 Acq On : 17 Apr 2020 15:14  
 Operator : SY/MD  
 Sample : L2288-02  
 Misc : 25.0mL/MSVOA V/WATER  
 ALS Vial : 13 Sample Multiplier: 1

Instrument :  
 MSVOA\_V  
 ClientSampleId :

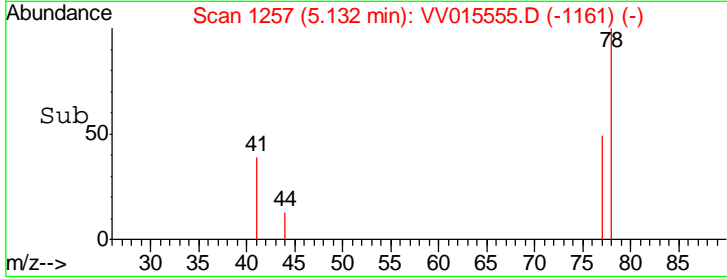
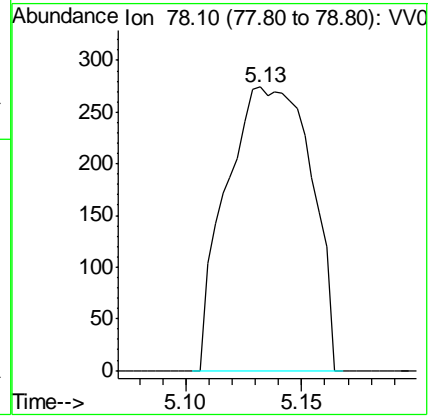
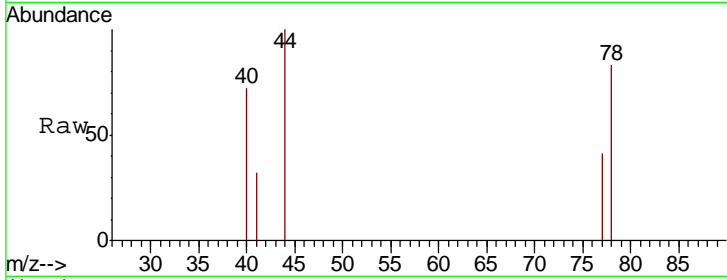
Quant Time: Apr 18 00:41:01 2020  
 Quant Method : Z:\VOASRV\HPCHEM1\MSVOA\_V\METHOD\SOMVTR040920WMA.M  
 Quant Title : TRACE VOA SOM01.0  
 QLast Update : Sat Apr 18 00:37:52 2020  
 Response via : Initial Calibration





#33  
 Benzene  
 Concen: 5.782 ug/L  
 RT: 5.13 min Scan# 1257  
 Delta R.T. 0.01 min  
 Lab File: VV015555.D  
 Acq: 17 Apr 2020 15:14  
 Tgt Ion: 78 Resp: 694

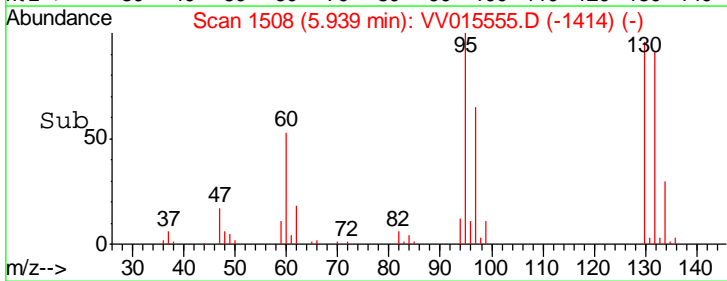
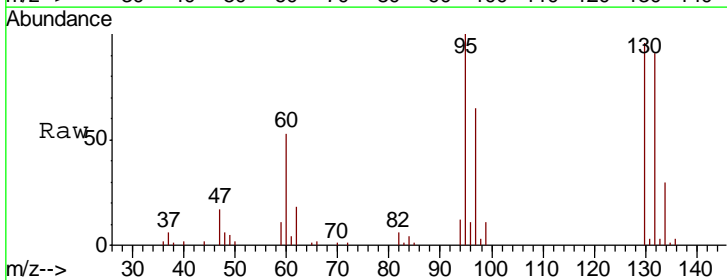
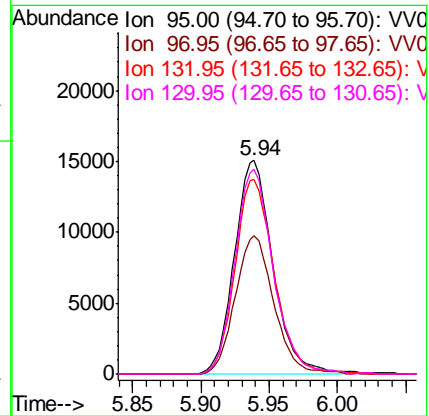
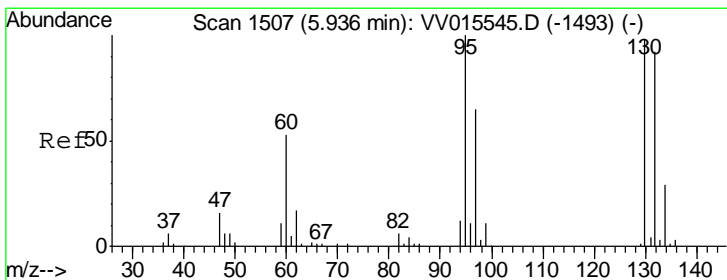
Instrument :  
 MSVOA\_V  
 ClientSampled :

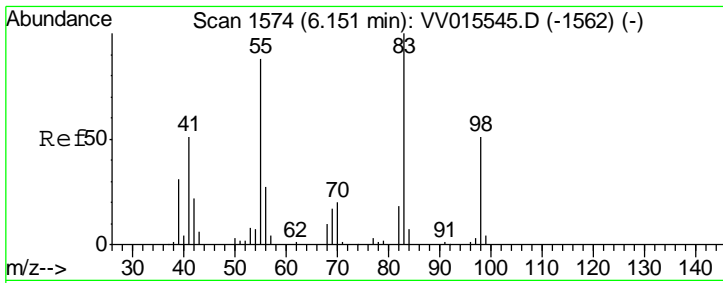


#34  
 Trichloroethene  
 Concen: 913.014 ug/L  
 RT: 5.94 min Scan# 1508  
 Delta R.T. 0.00 min  
 Lab File: VV015555.D  
 Acq: 17 Apr 2020 15:14

Tgt Ion: 95 Resp: 29494

Ion	Ratio	Lower	Upper
95	100		
97	64.9	45.4	84.4
132	91.2	64.8	120.4
130	95.9	67.4	125.2

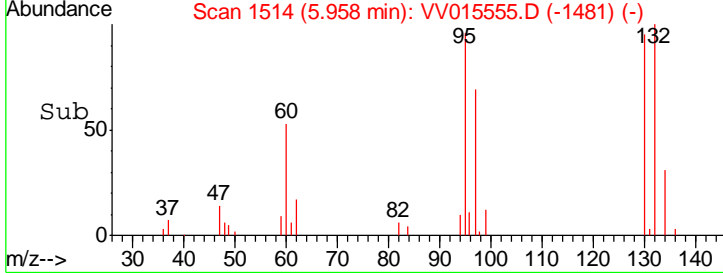
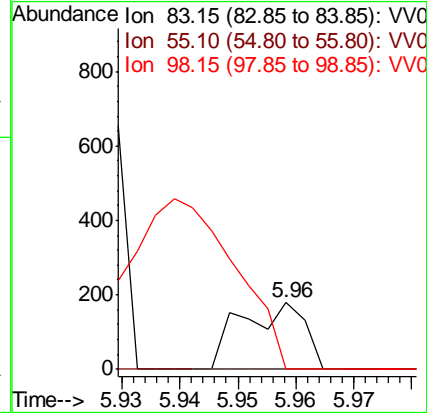
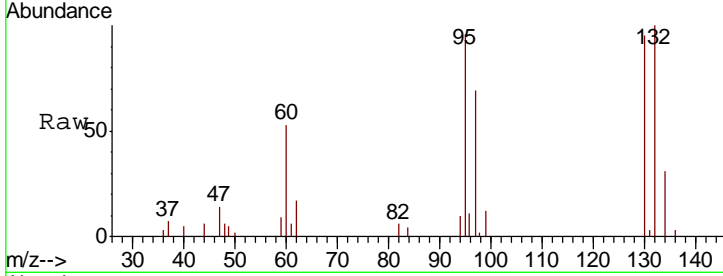




#35  
 Methylcyclohexane  
 Concen: 2.499 ug/L  
 RT: 5.96 min Scan# 1514  
 Delta R.T. -0.19 min  
 Lab File: VV015555.D  
 Acq: 17 Apr 2020 15:14

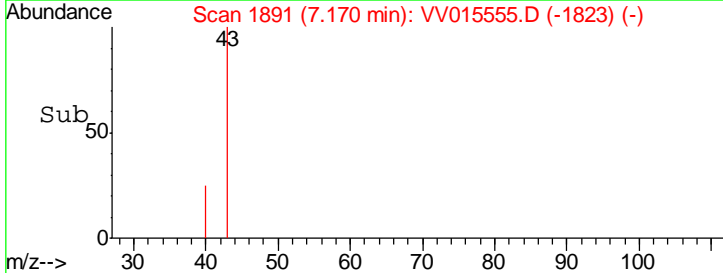
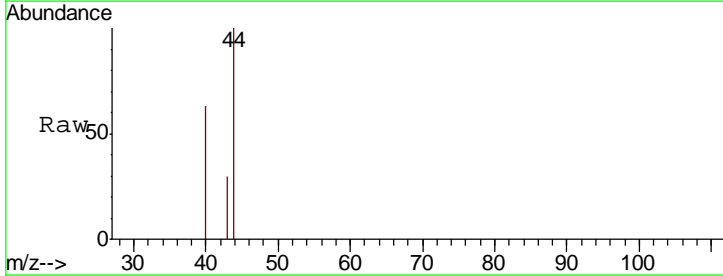
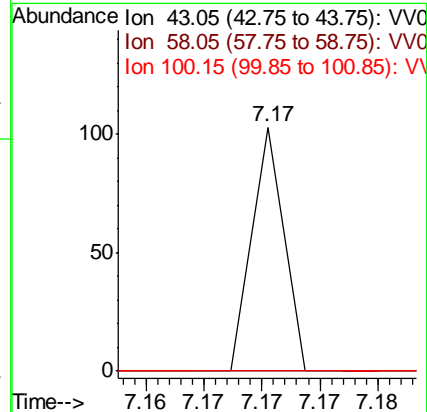
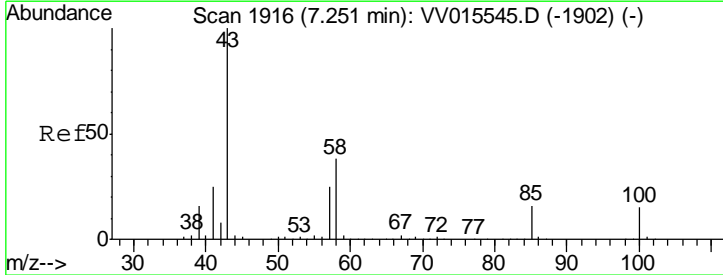
Instrument :  
 MSVOA\_V  
 ClientSampled :

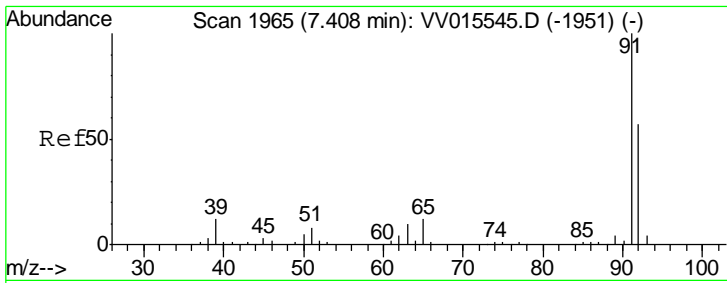
Tgt Ion	Resp	Lower	Upper
83	100		
55	0.0	66.6	99.8#
98	0.0	38.7	58.1#



#40  
 4-Methyl-2-pentanone  
 Concen: 1.023 ug/L  
 RT: 7.17 min Scan# 1891  
 Delta R.T. -0.08 min  
 Lab File: VV015555.D  
 Acq: 17 Apr 2020 15:14

Tgt Ion	Resp	Lower	Upper
43	100		
58	0.0	29.0	43.6#
100	0.0	11.0	16.6#

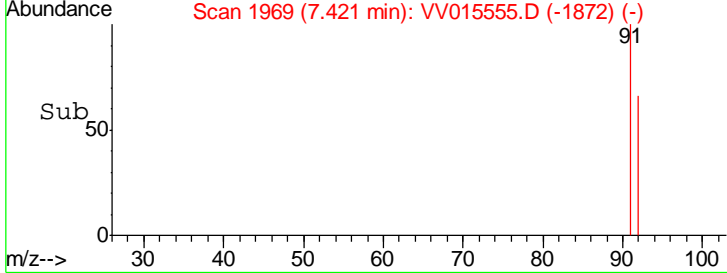
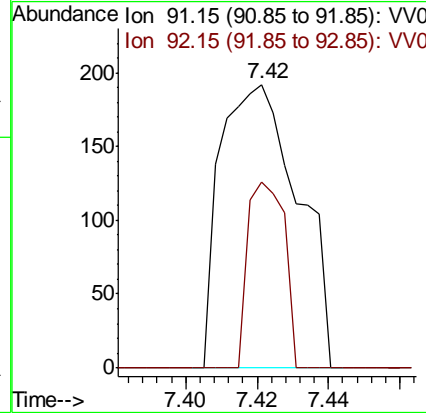
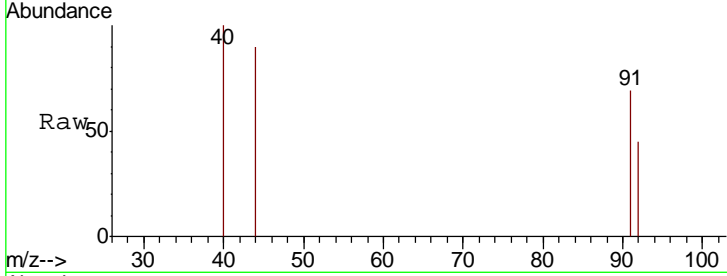




#42  
 Toluene  
 Concen: 2.218 ug/L  
 RT: 7.42 min Scan# 1969  
 Delta R.T. 0.01 min  
 Lab File: VV015555.D  
 Acq: 17 Apr 2020 15:14

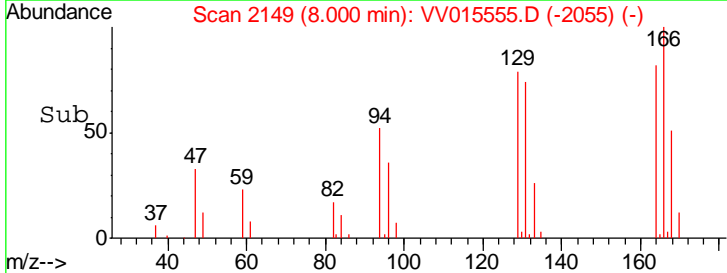
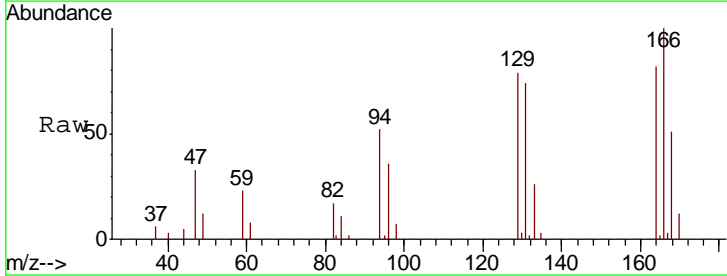
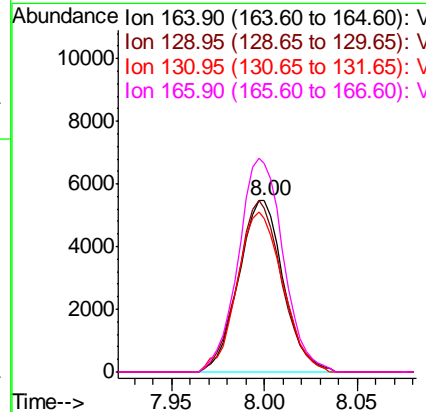
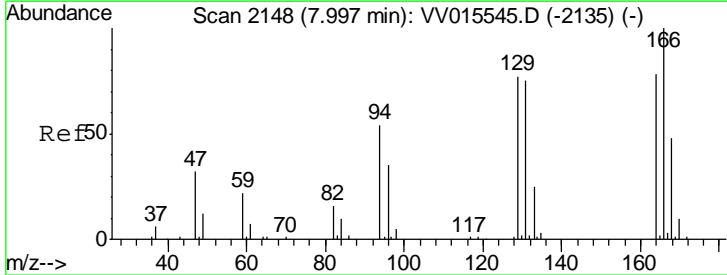
Instrument :  
 MSVOA\_V  
 ClientSampled :

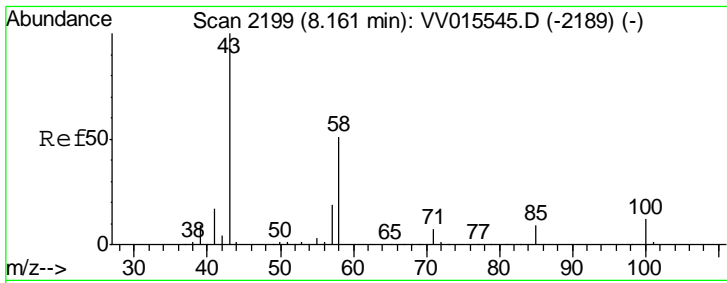
Tgt Ion	Resp	Lower	Upper
91	100		
92	65.6	40.2	74.6



#47  
 Tetrachloroethene  
 Concen: 381.971 ug/L  
 RT: 8.00 min Scan# 2149  
 Delta R.T. 0.00 min  
 Lab File: VV015555.D  
 Acq: 17 Apr 2020 15:14

Tgt Ion	Resp	Lower	Upper
164	100		
129	95.9	70.6	131.0
131	89.4	68.3	126.8
166	121.7	88.3	163.9

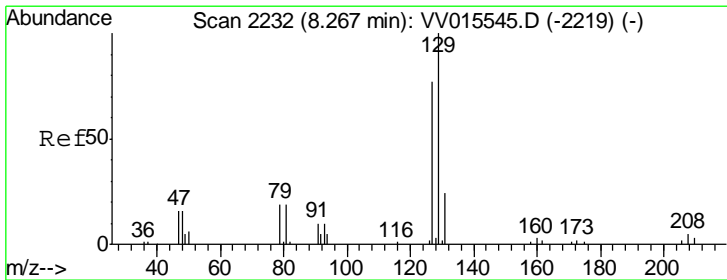
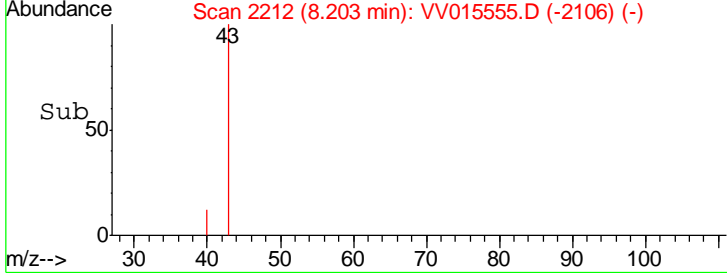
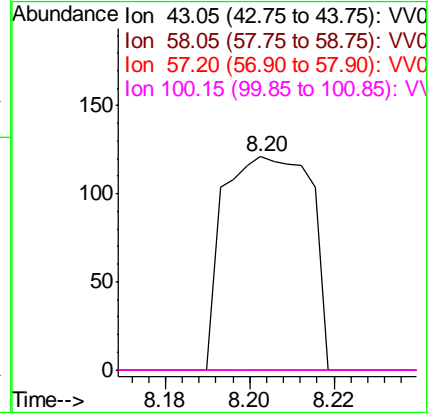
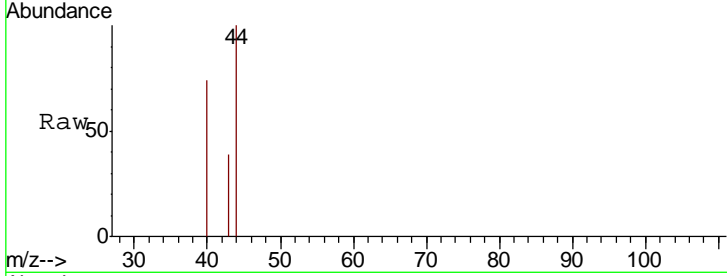




#48  
 2-Hexanone  
 Concen: 12.741 ug/L  
 RT: 8.20 min Scan# 2212  
 Delta R.T. 0.04 min  
 Lab File: VV015555.D  
 Acq: 17 Apr 2020 15:14

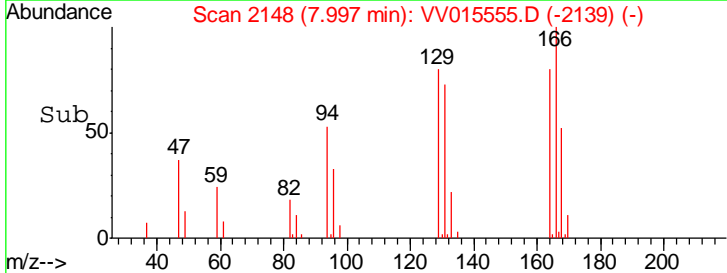
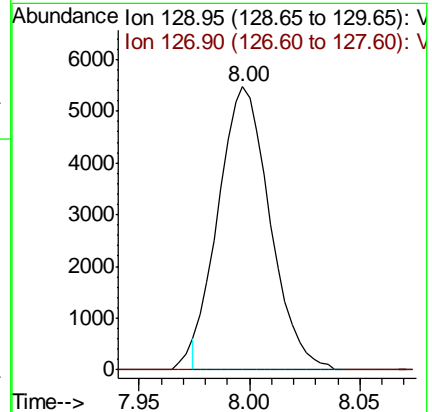
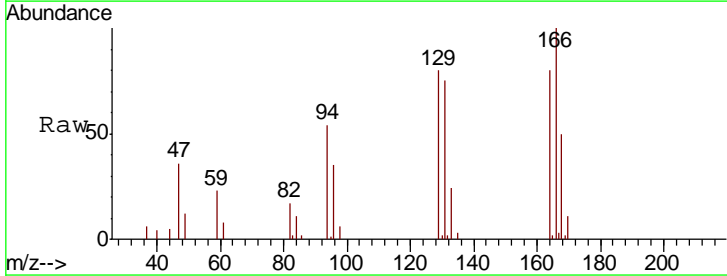
Instrument : MSVOA\_V  
 ClientSampled :

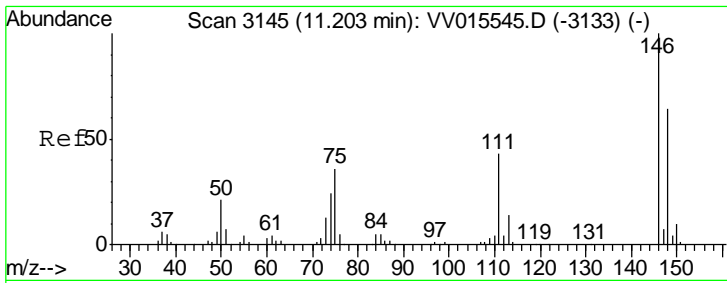
Tgt Ion	Resp	Lower	Upper
43	174		
58	0.0	41.4	62.0#
57	0.0	15.0	22.4#
100	0.0	9.4	14.2#



#49  
 Dibromochloromethane  
 Concen: 368.600 ug/L  
 RT: 8.00 min Scan# 2148  
 Delta R.T. -0.27 min  
 Lab File: VV015555.D  
 Acq: 17 Apr 2020 15:14

Tgt Ion	Resp	Lower	Upper
129	8835		
127	0.0	54.7	101.7#

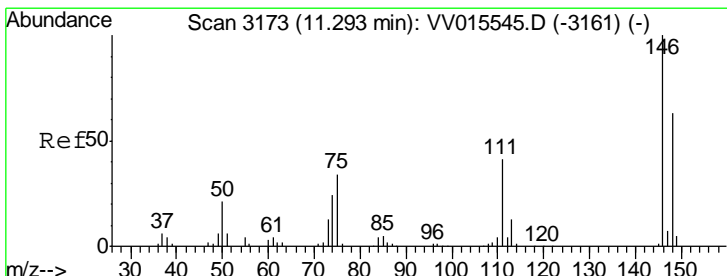
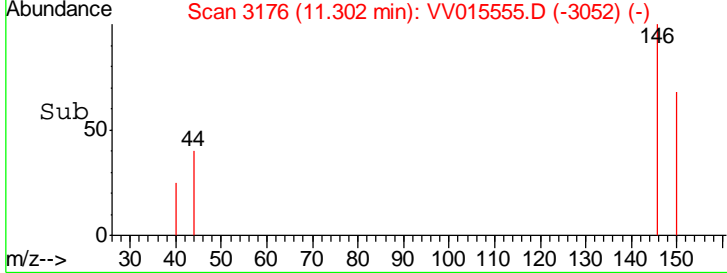
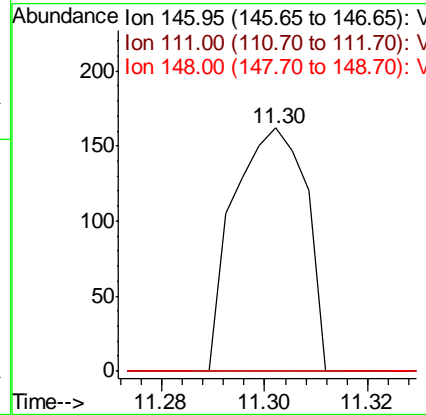
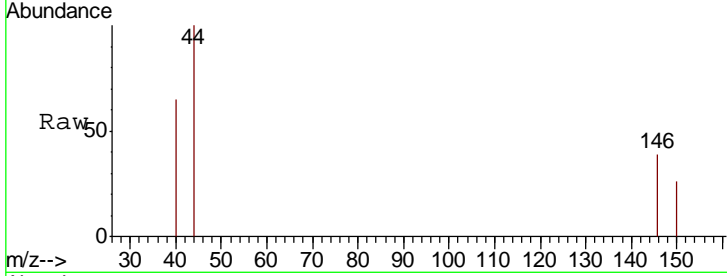




#62  
 1,3-Dichlorobenzene  
 Concen: 0.854 ug/L  
 RT: 11.30 min Scan# 3176  
 Delta R.T. 0.10 min  
 Lab File: VV015555.D  
 Acq: 17 Apr 2020 15:14

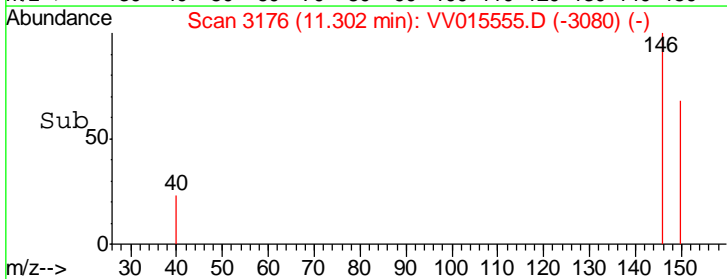
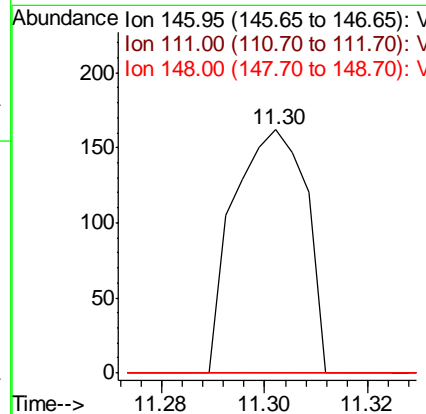
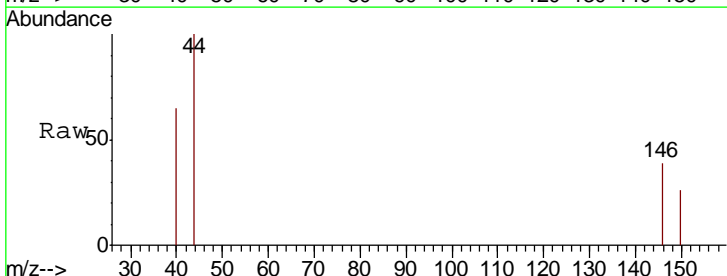
Instrument :  
 MSVOA\_V  
 ClientSampled :

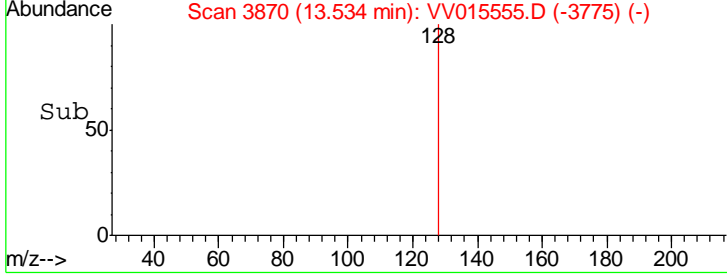
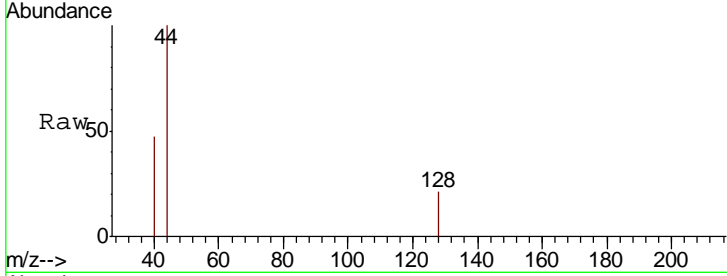
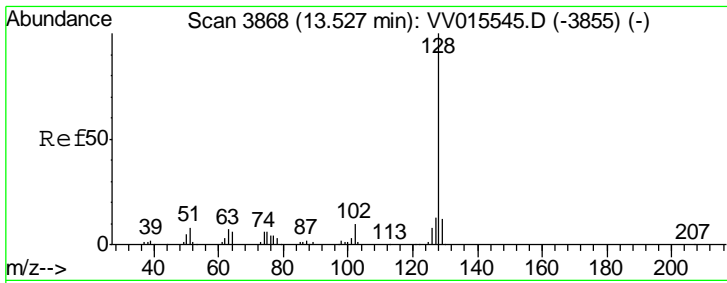
Tgt Ion	Ratio	Lower	Upper
146	100		
111	0.0	29.3	54.5#
148	0.0	42.4	78.6#



#63  
 1,4-Dichlorobenzene  
 Concen: 0.840 ug/L  
 RT: 11.30 min Scan# 3176  
 Delta R.T. 0.01 min  
 Lab File: VV015555.D  
 Acq: 17 Apr 2020 15:14

Tgt Ion	Ratio	Lower	Upper
146	100		
111	0.0	29.4	54.6#
148	0.0	44.3	82.3#





#69  
 Naphthalene  
 Concen: 0.089 ug/L  
 RT: 13.53 min Scan# 3870  
 Delta R.T. 0.01 min  
 Lab File: VV015555.D  
 Acq: 17 Apr 2020 15:14

Instrument : MSVOA\_V  
 ClientSampled :

Tot Ion	Ratio	Lower	Upper
128	100		
129	0.0	8.6	13.0#
127	0.0	10.4	15.6#

