

Data Path : Z:\VOASRV\HPCHEM1\MSVOA V\DATA\VV041720\
 Data File : VV015549.D
 Acq On : 17 Apr 2020 12:53
 Operator : SY/MD
 Sample : L2320-04DL 5X
 Misc : 25.0mL/MSVOA V/WATER
 ALS Vial : 7 Sample Multiplier: 1

Instrument :
 MSVOA_V
 Client Sampled :
 BFRR1DL

Quant Time: Apr 18 01:21:29 2020
 Quant Method : Z:\VOASRV\HPCHEM1\MSVOA_V\METHOD\SOMVTR040920WMA.M
 Quant Title : TRACE VOA SOM01.0
 QLast Update : Sat Apr 18 00:37:52 2020
 Response via : Initial Calibration

Internal Standards	R.T.	QIon	Response	Conc	Units	Dev(Min)
1) 1,4-Difluorobenzene	5.64	114	93969	5.00	ug/L	0.00
28) Chlorobenzene-d5	8.87	117	88832	5.00	ug/L	0.00
60) 1,4-Dichlorobenzene-d4	11.27	152	43661	5.00	ug/L	0.00

System Monitoring Compounds

4) Vinyl Chloride-d3	1.31	65	23854	4.89	ug/L	0.00
Spiked Amount	5.000	Range	40 - 130	Recovery	=	97.80%
7) Chloroethane-d5	1.58	69	22700	5.06	ug/L	0.00
Spiked Amount	5.000	Range	65 - 130	Recovery	=	101.20%
11) 1,1-Dichloroethene-d2	2.12	63	36219	3.53	ug/L	0.00
Spiked Amount	5.000	Range	60 - 125	Recovery	=	70.60%
20) 2-Butanone-d5	3.94	46	74954	54.75	ug/L	0.00
Spiked Amount	50.000	Range	40 - 130	Recovery	=	109.50%
24) Chloroform-d	4.38	84	53232	4.93	ug/L	0.00
Spiked Amount	5.000	Range	70 - 125	Recovery	=	98.60%
26) 1,2-Dichloroethane-d4	5.06	65	30919	5.31	ug/L	0.00
Spiked Amount	5.000	Range	70 - 130	Recovery	=	106.20%
32) Benzene-d6	5.07	84	102916	5.22	ug/L	0.00
Spiked Amount	5.000	Range	70 - 125	Recovery	=	104.40%
36) 1,2-Dichloropropane-d6	6.09	67	32536	5.30	ug/L	0.00
Spiked Amount	5.000	Range	60 - 140	Recovery	=	106.00%
41) Toluene-d8	7.34	98	91751	4.88	ug/L	0.00
Spiked Amount	5.000	Range	70 - 130	Recovery	=	97.60%
43) trans-1,3-Dichloropropene-	7.64	79	12744	4.77	ug/L	0.00
Spiked Amount	5.000	Range	55 - 130	Recovery	=	95.40%
46) 2-Hexanone-d5	8.11	63	61488	47.76	ug/L	0.00
Spiked Amount	50.000	Range	45 - 130	Recovery	=	95.52%
57) 1,1,2,2-Tetrachloroethane-	10.24	84	20951	4.30	ug/L	0.00
Spiked Amount	5.000	Range	65 - 120	Recovery	=	86.00%
64) 1,2-Dichlorobenzene-d4	11.65	152	35138	5.01	ug/L	0.00
Spiked Amount	5.000	Range	80 - 120	Recovery	=	100.20%

Target Compounds

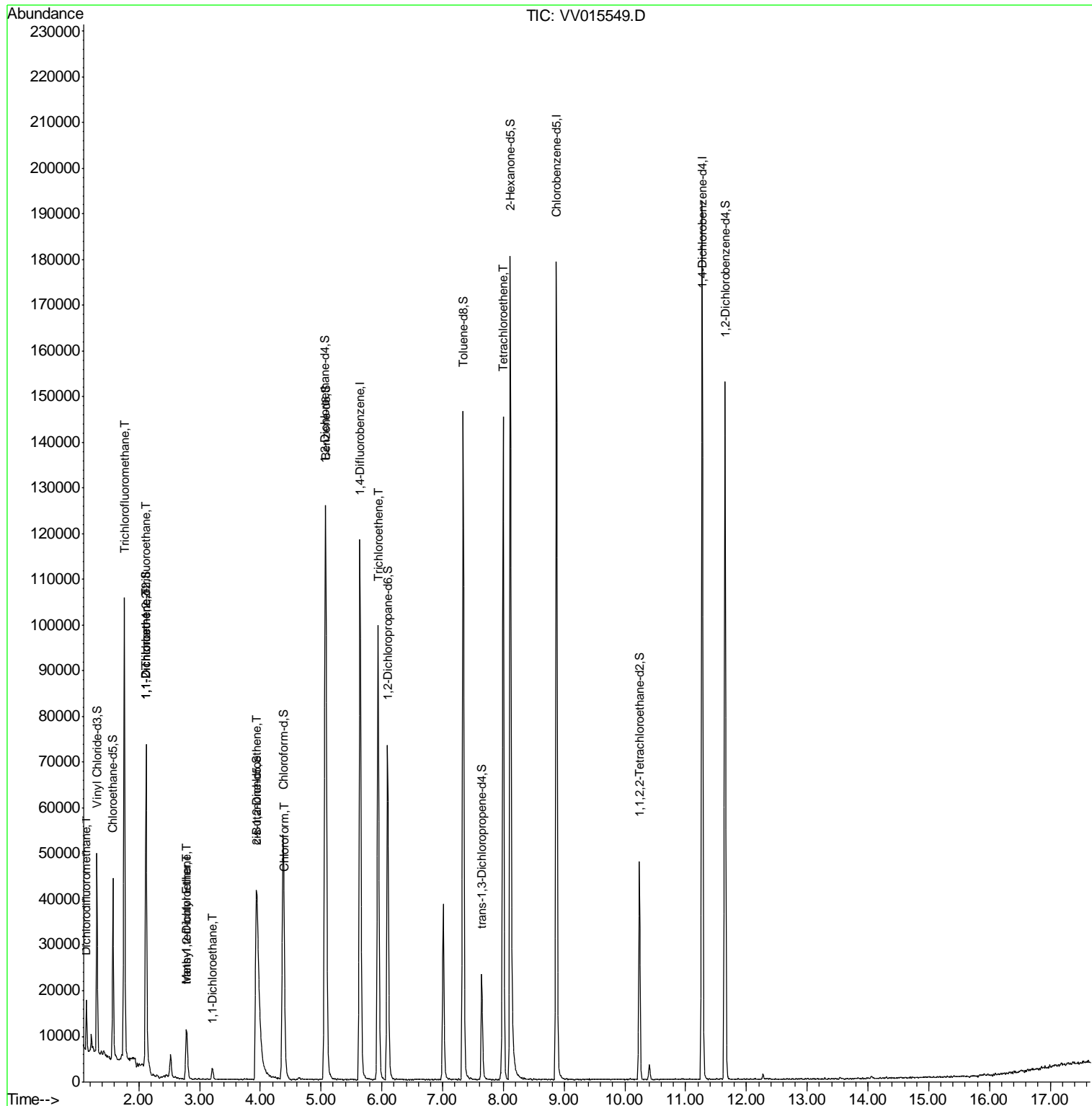
Target Compounds	R.T.	QIon	Response	Conc	Units	Ovalue
2) Dichlorodifluoromethane	1.14	85	4076	0.438	ug/L	99
9) Trichlorofluoromethane	1.76	101	57747	5.292	ug/L	99
10) 1,1,2-Trichloro-1,2,2-trif	2.13	101	1521	0.247	ug/L	89
12) 1,1-Dichloroethene	2.13	96	1306	0.221	ug/L #	1
17) Methyl tert-butyl Ether	2.79	73	7262	0.461	ug/L #	93
18) trans-1,2-Dichloroethene	2.78	96	1592	0.239	ug/L	95
19) 1,1-Dichloroethane	3.21	63	2759	0.220	ug/L	94
22) cis-1,2-Dichloroethene	3.94	96	3562	0.516	ug/L	82
25) Chloroform	4.40	83	3009	0.235	ug/L	100
34) Trichloroethene	5.94	95	34043	4.757	ug/L	98
47) Tetrachloroethene	8.00	164	29132	5.495	ug/L	98

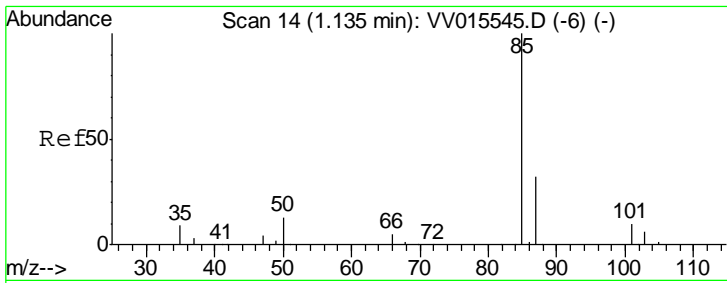
(#) = qualifier out of range (m) = manual integration (+) = signals summed

Data Path : Z:\VOASRV\HPCHEM1\MSVOA V\DATA\VV041720\
 Data File : VV015549.D
 Acq On : 17 Apr 2020 12:53
 Operator : SY/MD
 Sample : L2320-04DL 5X
 Misc : 25.0mL/MSVOA V/WATER
 ALS Vial : 7 Sample Multiplier: 1

Instrument :
 MSVOA_V
 Client Sample Id :
 BFRR1DL

Quant Time: Apr 18 01:21:29 2020
 Quant Method : Z:\VOASRV\HPCHEM1\MSVOA_V\METHOD\SOMVTR040920WMA.M
 Quant Title : TRACE VOA SOM01.0
 QLast Update : Sat Apr 18 00:37:52 2020
 Response via : Initial Calibration

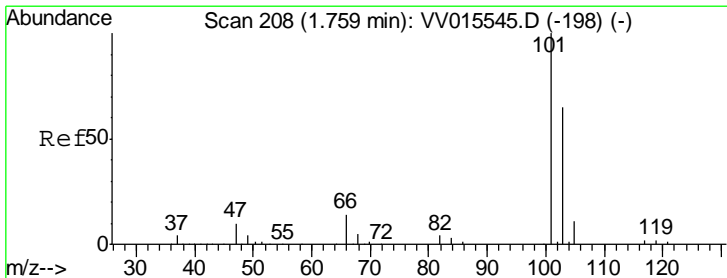
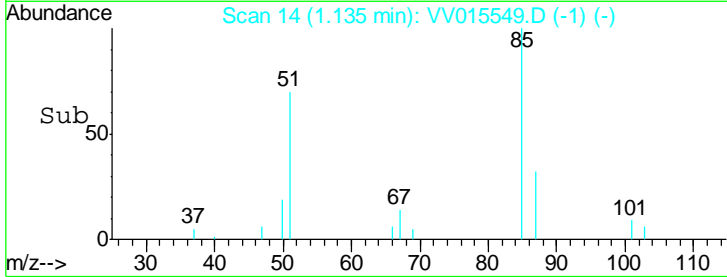
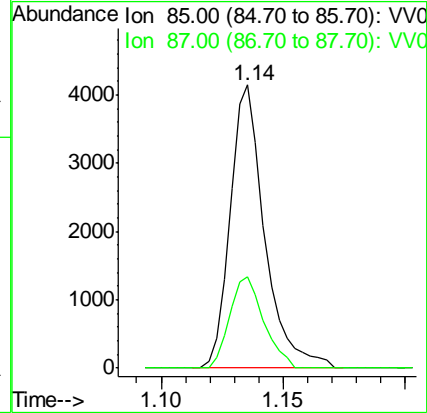
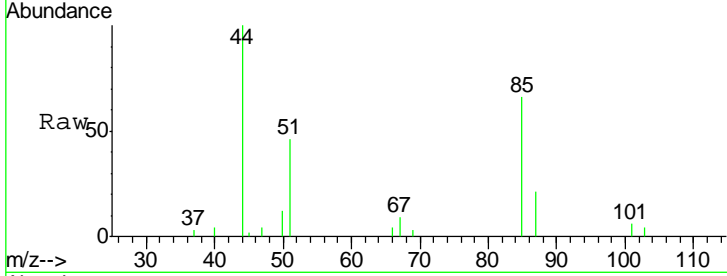




#2
 Dichlorodifluoromethane
 Concen: 0.438 ug/L
 RT: 1.14 min Scan# 14
 Delta R.T. 0.00 min
 Lab File: VV015549.D
 Acq: 17 Apr 2020 12:53

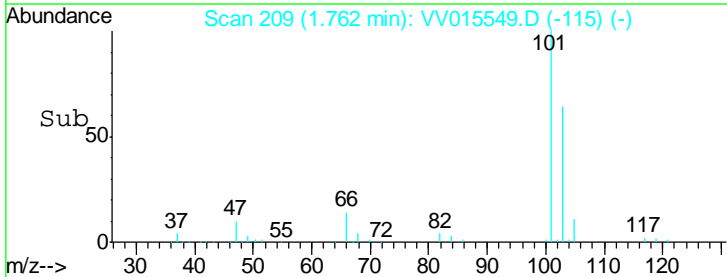
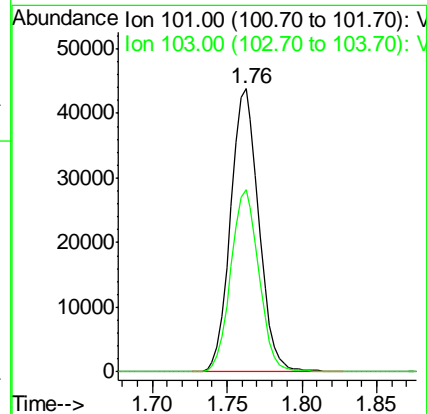
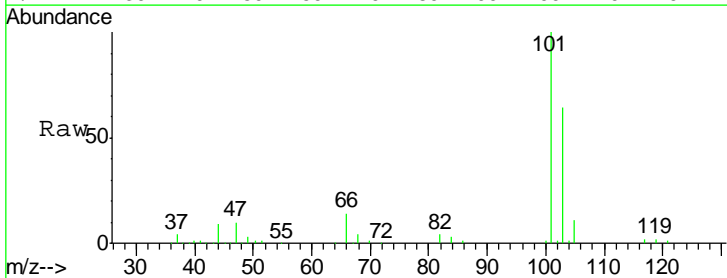
Instrument :
 MSVOA_V
ClientSampled :
 BFRR1DL

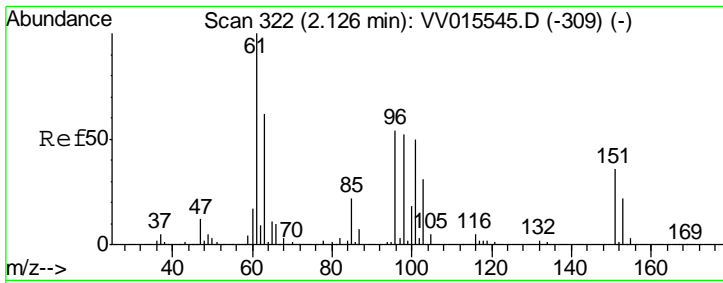
Tgt Ion: 85 Resp: 4076
 Ion Ratio Lower Upper
 85 100
 87 31.9 25.3 37.9



#9
 Trichlorofluoromethane
 Concen: 5.292 ug/L
 RT: 1.76 min Scan# 209
 Delta R.T. 0.00 min
 Lab File: VV015549.D
 Acq: 17 Apr 2020 12:53

Tgt Ion: 101 Resp: 57747
 Ion Ratio Lower Upper
 101 100
 103 63.9 51.9 77.9

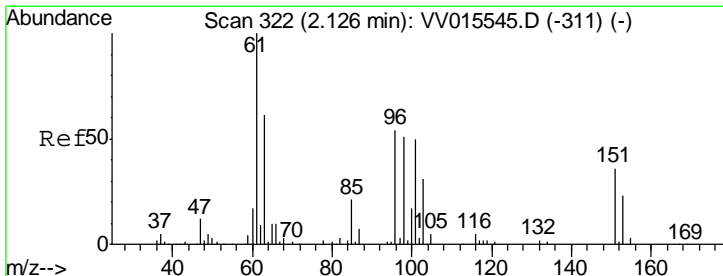
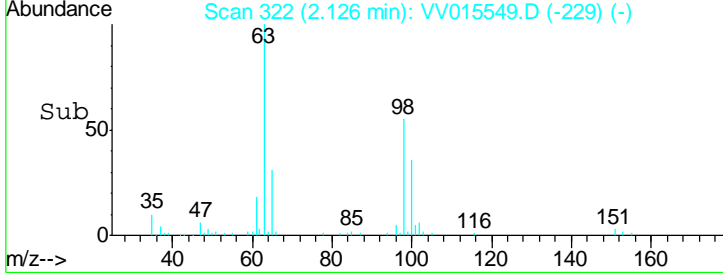
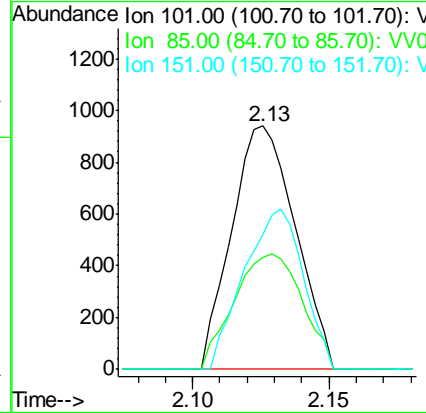
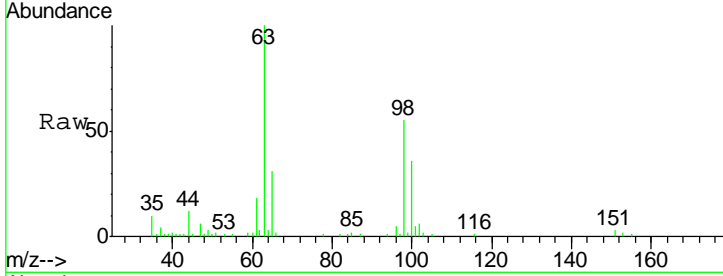




#10
 1,1,2-Trichloro-1,2,2-trifluoroethane
 Concen: 0.247 ug/L
 RT: 2.13 min Scan# 322
 Delta R.T. 0.00 min
 Lab File: VV015549.D
 Acq: 17 Apr 2020 12:53

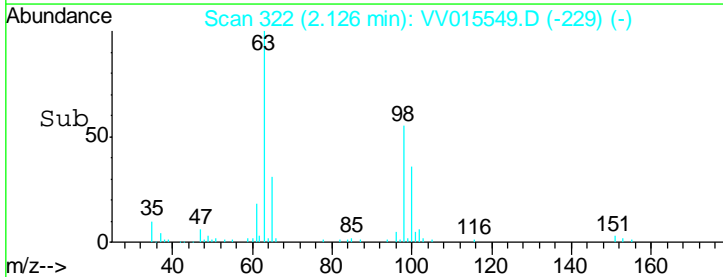
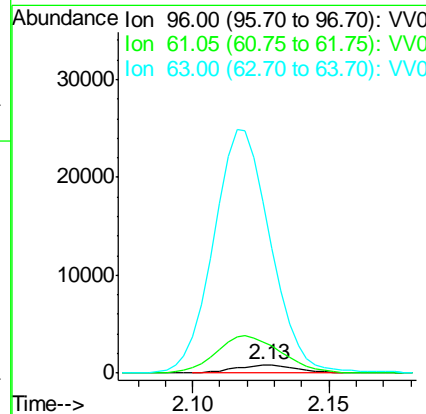
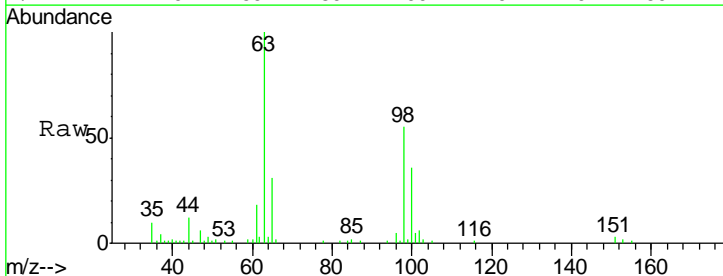
Instrument :
 MSVOA_V
ClientSampled :
 BFRR1DL

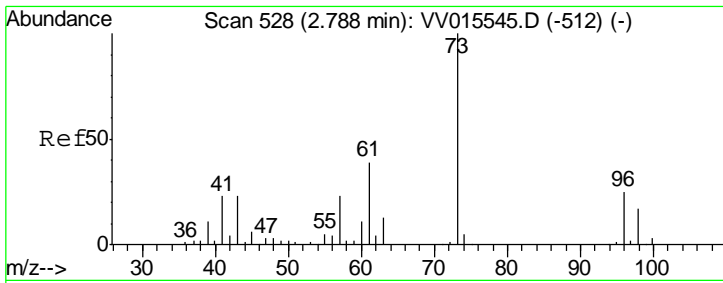
Tgt Ion	Resp	Lower	Upper
101	1521		
101	100		
85	50.8	36.3	54.5
151	61.5	58.2	87.4



#12
 1,1-Dichloroethene
 Concen: 0.221 ug/L
 RT: 2.13 min Scan# 322
 Delta R.T. 0.00 min
 Lab File: VV015549.D
 Acq: 17 Apr 2020 12:53

Tgt Ion	Resp	Lower	Upper
96	1306		
96	100		
61	367.0	127.7	237.1#
63	1991.9	75.1	139.5#

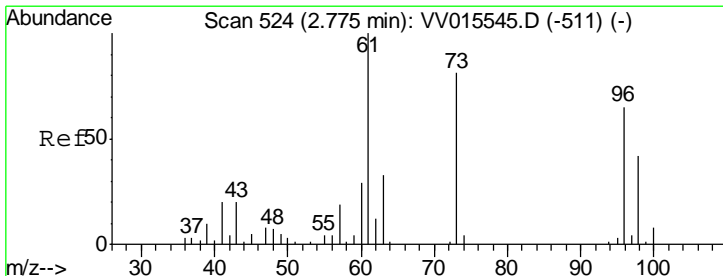
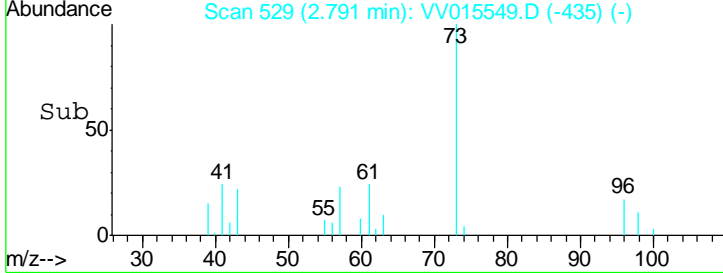
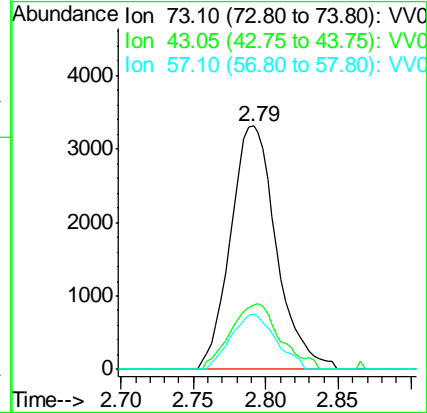
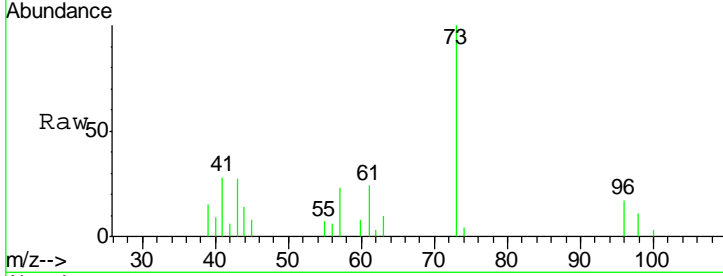




#17
 Methyl tert-butyl Ether
 Concen: 0.461 ug/L
 RT: 2.79 min Scan# 529
 Delta R.T. 0.00 min
 Lab File: VV015549.D
 Acq: 17 Apr 2020 12:53

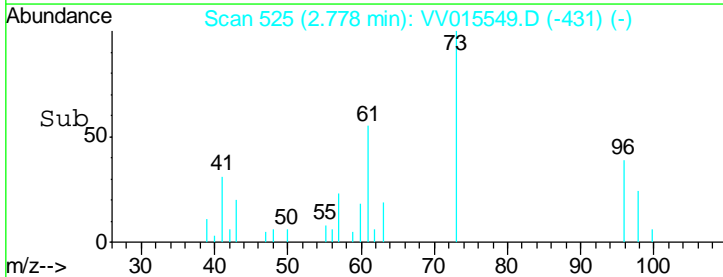
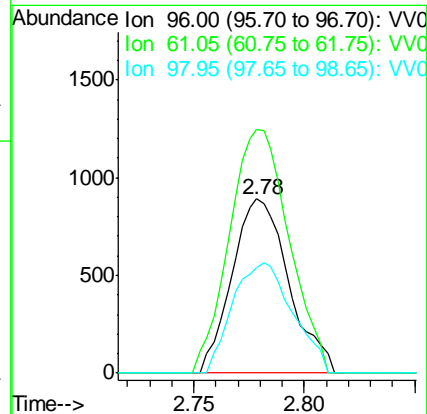
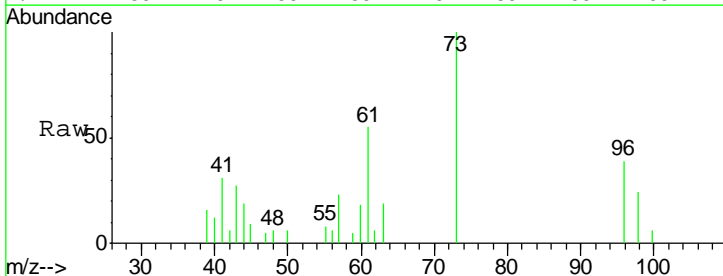
Instrument :
 MSVOA_V
 ClientSampled :
 BFRR1DL

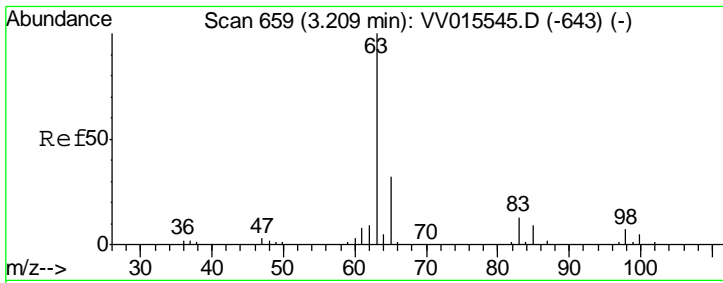
Tgt Ion	Resp	Lower	Upper
73	100		
43	29.1	18.3	27.5#
57	22.2	18.4	27.6



#18
 trans-1,2-Dichloroethene
 Concen: 0.239 ug/L
 RT: 2.78 min Scan# 525
 Delta R.T. 0.00 min
 Lab File: VV015549.D
 Acq: 17 Apr 2020 12:53

Tgt Ion	Resp	Lower	Upper
96	100		
61	140.0	104.4	194.0
98	60.9	42.8	79.4

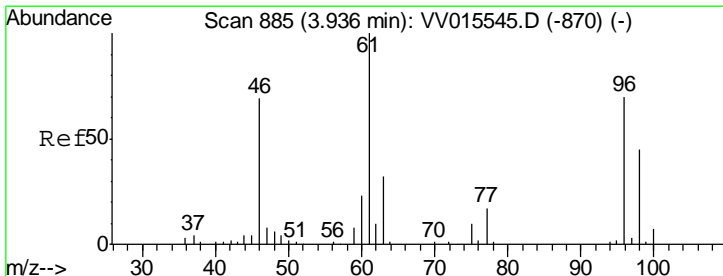
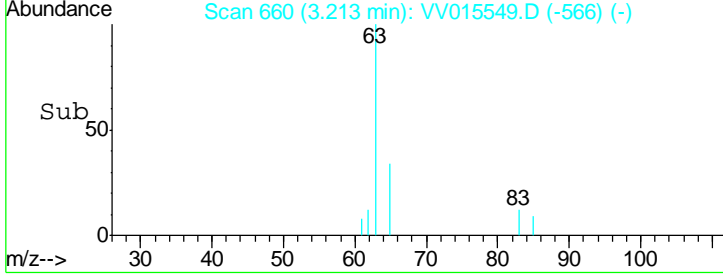
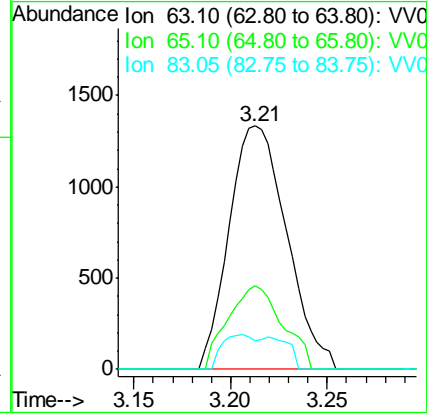
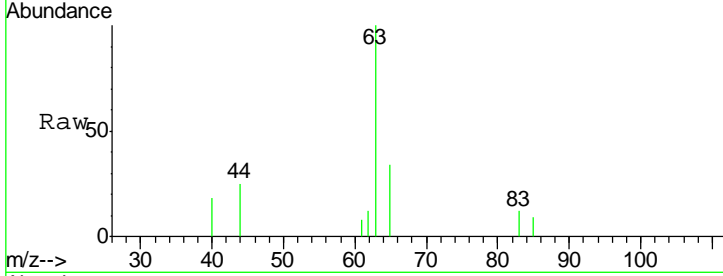




#19
 1,1-Dichloroethane
 Concen: 0.220 ug/L
 RT: 3.21 min Scan# 660
 Delta R.T. 0.00 min
 Lab File: VV015549.D
 Acq: 17 Apr 2020 12:53

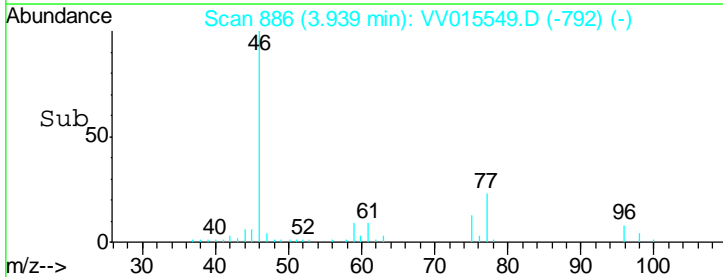
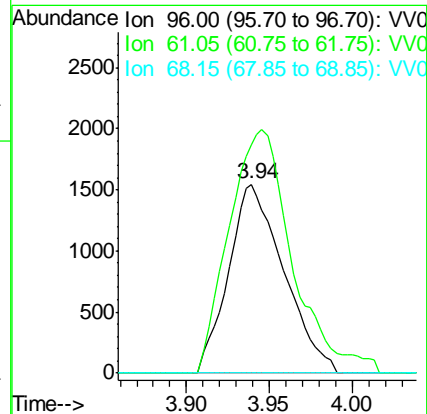
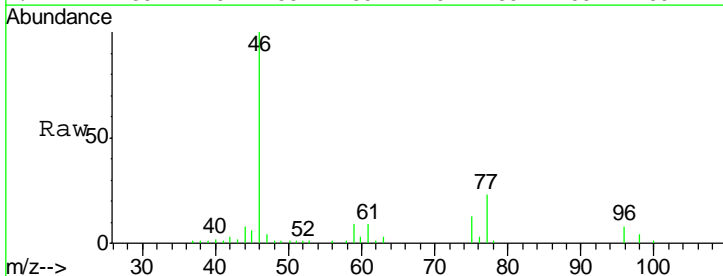
Instrument :
 MSVOA_V
 ClientSampled :
 BFRR1DL

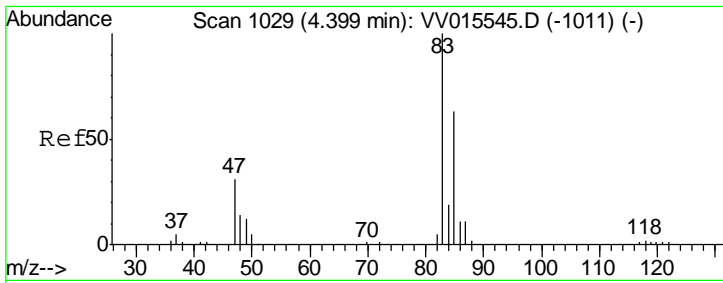
Tgt Ion	Resp	Lower	Upper
63	100		
65	34.2	21.3	39.6
83	11.6	9.4	17.6



#22
 cis-1,2-Dichloroethene
 Concen: 0.516 ug/L
 RT: 3.94 min Scan# 886
 Delta R.T. 0.00 min
 Lab File: VV015549.D
 Acq: 17 Apr 2020 12:53

Tgt Ion	Resp	Lower	Upper
96	100		
61	121.1	100.0	185.8
68	0.0	0.0	0.0

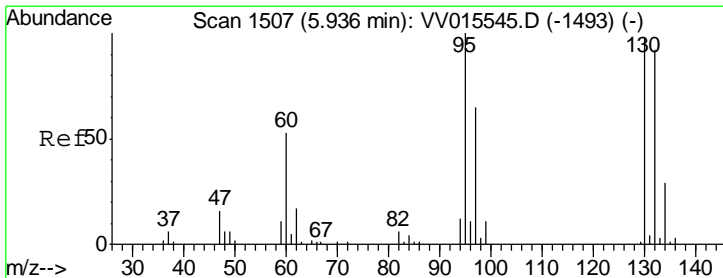
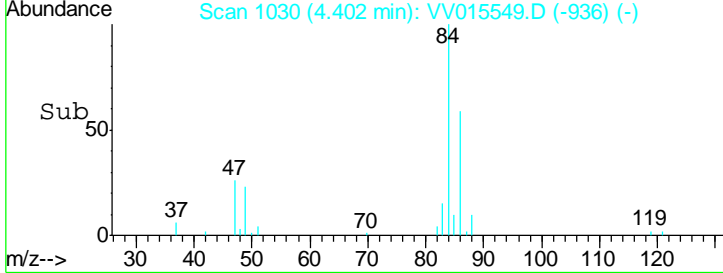
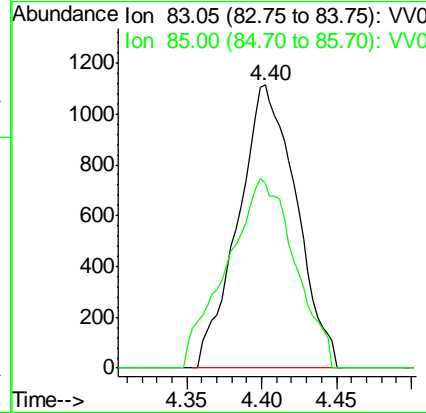
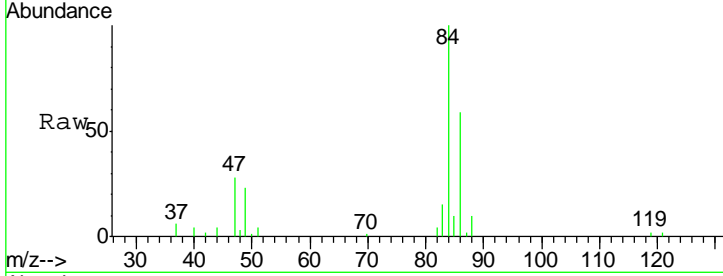




#25
 Chloroform
 Concen: 0.235 ug/L
 RT: 4.40 min Scan# 1030
 Delta R.T. 0.00 min
 Lab File: VV015549.D
 Acq: 17 Apr 2020 12:53

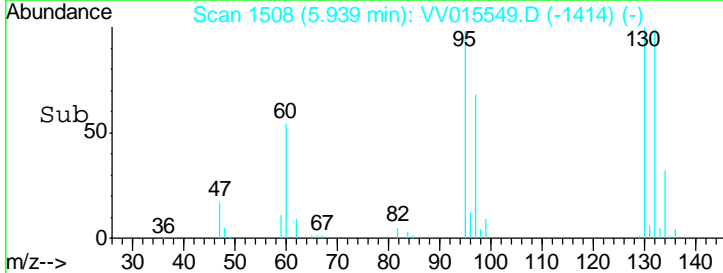
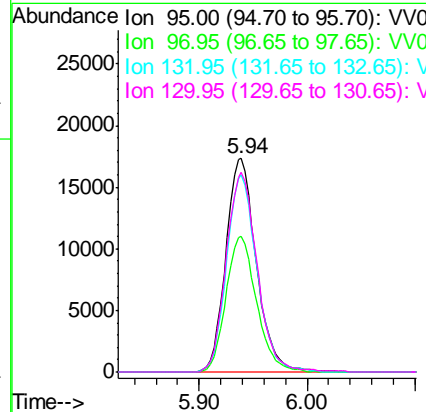
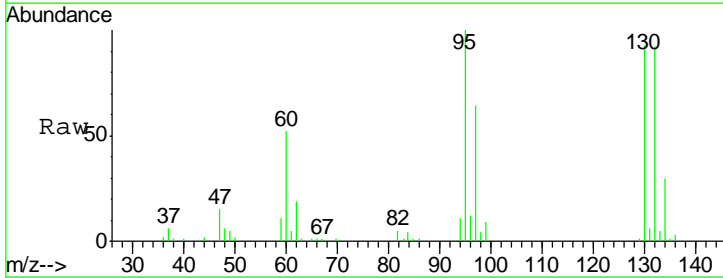
Instrument :
 MSVOA_V
 ClientSampled :
 BFRR1DL

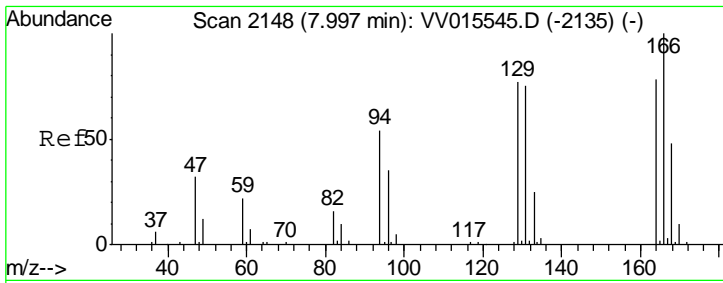
Tgt Ion	Resp	Lower	Upper
83	3009		
83	100		
85	65.4	45.9	85.3



#34
 Trichloroethene
 Concen: 4.757 ug/L
 RT: 5.94 min Scan# 1508
 Delta R.T. 0.00 min
 Lab File: VV015549.D
 Acq: 17 Apr 2020 12:53

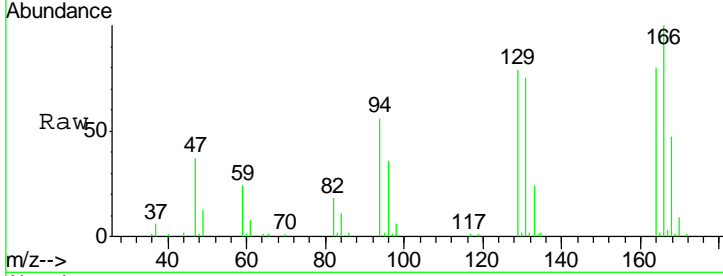
Tgt Ion	Resp	Lower	Upper
95	34043		
95	100		
97	63.7	45.4	84.4
132	92.2	64.8	120.4
130	93.3	67.4	125.2





#47
 Tetrachloroethene
 Concen: 5.495 ug/L
 RT: 8.00 min Scan# 2148
 Delta R.T. 0.00 min
 Lab File: VV015549.D
 Acq: 17 Apr 2020 12:53

Instrument :
 MSVOA_V
 ClientSampleId :
 BFRR1DL



Tot Ion:164 Resp: 29132

Ion	Ratio	Lower	Upper
164	100		
129	99.0	70.6	131.0
131	94.0	68.3	126.8
166	125.4	88.3	163.9

