

Data File : VV010379.D  
 Acq On : 19 Apr 2019 10:31  
 Operator : SY/MD  
 Sample : K2402-09MSD  
 Misc : 5.00G/10mL/MSVOA\_V/SOIL  
 ALS Vial : 1 Sample Multiplier: 1

Instrument :  
 MSVOA\_V  
 Client Sampled :  
 GAHH9MSD

Quant Time: Apr 20 02:30:51 2019  
 Quant Method : Z:\VOASRV\HPCHEM1\MSVOA\_V\METHOD\SOM2VLM041819S.M  
 Quant Title : VOC Analysis  
 QLast Update : Sat Apr 20 02:27:31 2019  
 Response via : Initial Calibration

Internal Standards	R.T.	QIon	Response	Conc	Units	Dev(Min)
1) 1,4-Difluorobenzene	5.67	114	40918	25.00	ug/L	0.00
28) Chlorobenzene-d5	8.90	117	38270	25.00	ug/L	0.00
60) 1,4-Dichlorobenzene-d4	11.30	152	16185	25.00	ug/L	0.00

System Monitoring Compounds

4) Vinyl Chloride-d3	1.32	65	11196	21.55	ug/L	0.00
Spiked Amount	25.000	Range	30 - 150	Recovery	=	86.20%
7) Chloroethane-d5	1.58	69	10544	24.16	ug/L	0.03
Spiked Amount	25.000	Range	30 - 150	Recovery	=	96.64%
10) 1,1-Dichloroethene-d2	2.13	63	21694	17.31	ug/L	0.01
Spiked Amount	25.000	Range	45 - 110	Recovery	=	69.24%
20) 2-Butanone-d5	4.03	46	417	2.58	ug/L	0.10
Spiked Amount	50.000	Range	20 - 135	Recovery	=	5.16%#
24) Chloroform-d	4.40	84	22919	21.31	ug/L	0.00
Spiked Amount	25.000	Range	40 - 150	Recovery	=	85.24%
26) 1,2-Dichloroethane-d4	5.08	65	13424	21.14	ug/L	0.00
Spiked Amount	25.000	Range	70 - 130	Recovery	=	84.56%
29) Benzene-d6	5.10	84	41348	21.11	ug/L	0.00
Spiked Amount	25.000	Range	20 - 135	Recovery	=	84.44%
33) 1,2-Dichloropropane-d6	6.12	67	11934	20.82	ug/L	0.00
Spiked Amount	25.000	Range	70 - 120	Recovery	=	83.28%
37) Toluene-d8	7.36	98	36299	19.28	ug/L	0.00
Spiked Amount	25.000	Range	30 - 130	Recovery	=	77.12%
38) trans-1,3-Dichloropropene-	7.67	79	4195	14.88	ug/L	0.00
Spiked Amount	25.000	Range	30 - 135	Recovery	=	59.52%
39) 2-Hexanone-d5	8.14	63	3685	28.87	ug/L	0.00
Spiked Amount	50.000	Range	20 - 135	Recovery	=	57.74%
48) 1,1,2,2-Tetrachloroethane-	10.26	84	11094	19.35	ug/L	0.00
Spiked Amount	25.000	Range	45 - 120	Recovery	=	77.40%
61) 1,2-Dichlorobenzene-d4	11.67	152	13378	21.02	ug/L	0.00
Spiked Amount	25.000	Range	75 - 120	Recovery	=	84.08%

Target Compounds

Target Compounds	R.T.	QIon	Response	Conc	Units	Qvalue
6) Bromomethane	1.54	94	493	1.368	ug/L	79
12) 1,1-Dichloroethene	2.14	96	12067	22.701	ug/L	90
13) Acetone	2.20	43	580	3.396	ug/L	80
16) Methylene chloride	2.54	84	1822	2.788	ug/L	84
34) Benzene	5.15	78	50385	26.980	ug/L	100
35) Trichloroethene	5.96	95	14247	25.785	ug/L	93
40) 1,2-Dichloropropane	6.12	63	1610	3.361	ug/L #	86
44) Toluene	7.43	91	48607	23.087	ug/L	99
52) Chlorobenzene	8.93	112	34065	23.254	ug/L	96
53) Ethylbenzene	9.06	91	6793	2.840	ug/L	95
54) m,p-Xylene	9.18	106	60508	65.350	ug/L	97
55) o-xylene	9.59	106	34158	38.252	ug/L	98
56) Styrene	9.60	104	16595	10.883	ug/L	88
57) Isopropylbenzene	9.97	105	9909	4.164	ug/L #	95
59) 1,2,3-Trichloropropane	10.39	75	319	0.790	ug/L #	1
66) 1,2-Dibromo-3-chloropropan	12.46	75	2347	30.815	ug/L #	1
68) 1,2,4-trichlorobenzene	13.31	180	472	0.719	ug/L #	1

Data Path : Z:\VOASRV\HPCHEM1\MSVOA\_V\DATA\VV041819\  
Quantitation Report (Not Reviewed)

Data File : VV010379.D  
Acq On : 19 Apr 2019 10:31  
Operator : SY/MD  
Sample : K2402-09MSD  
Misc : 5.00G/10mL/MSVOA\_V/SOIL  
ALS Vial : 1 Sample Multiplier: 1

Instrument :  
MSVOA\_V  
ClientSampleId :  
GAHH9MSD

Quant Time: Apr 20 02:30:51 2019  
Quant Method : Z:\VOASRV\HPCHEM1\MSVOA\_V\METHOD\SOM2VLM041819S.M  
Quant Title : VOC Analysis  
QLast Update : Sat Apr 20 02:27:31 2019  
Response via : Initial Calibration

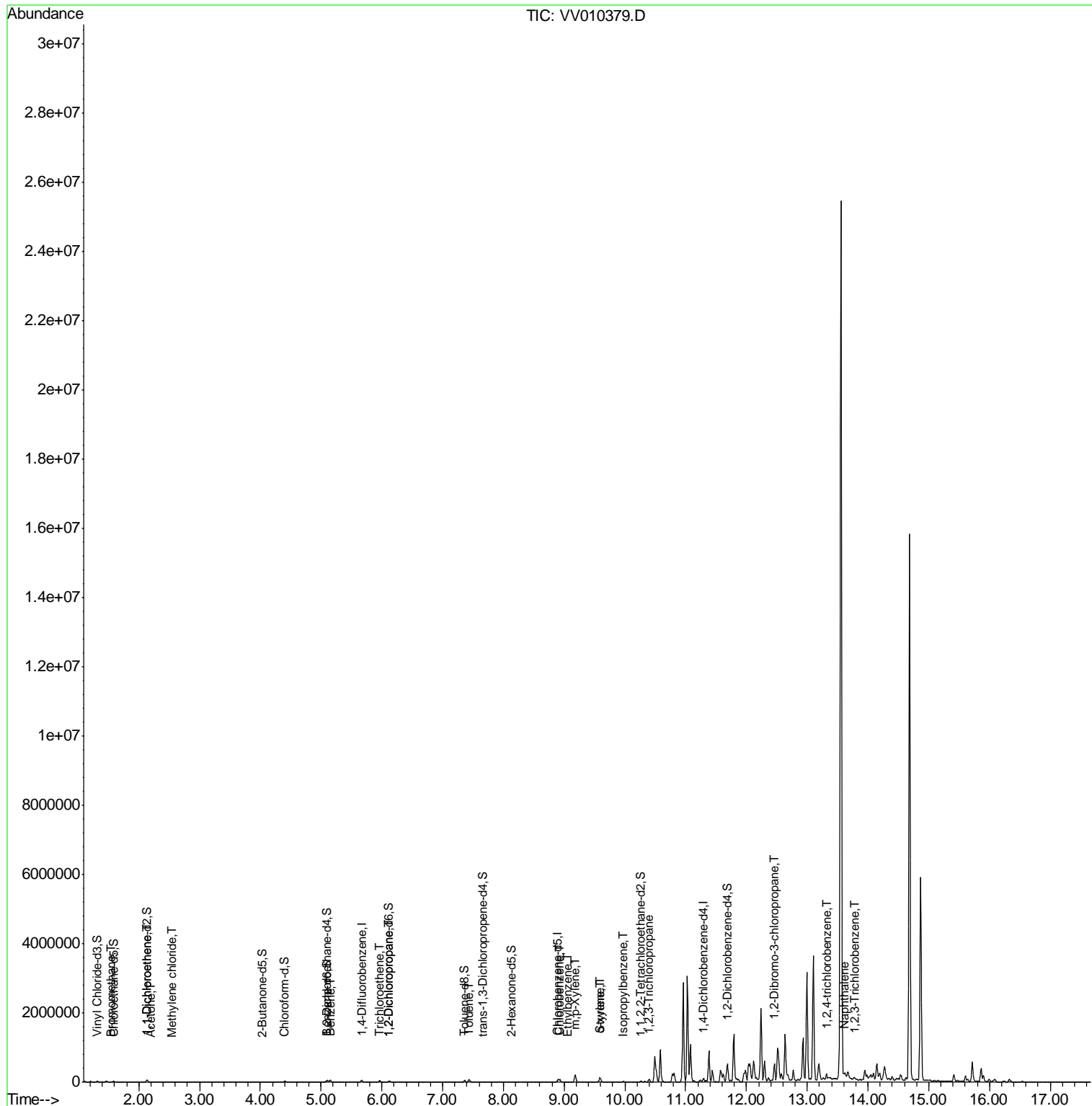
Internal Standards	R.T.	QIon	Response	Conc	Units	Dev(Min)
69) Naphthalene	13.62	128	61956	51.135	ug/L #	61
70) 1,2,3-Trichlorobenzene	13.79	180	451	0.707	ug/L #	60

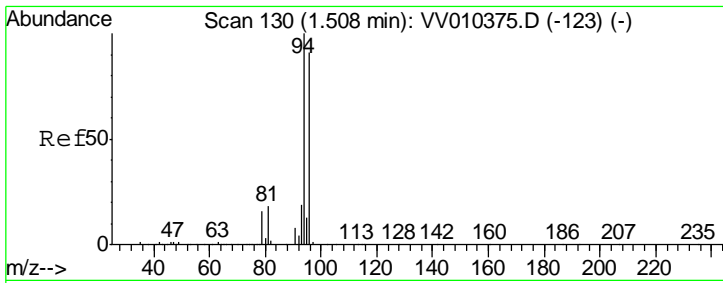
(#) = qualifier out of range (m) = manual integration (+) = signals summed

Data File : VV010379.D  
Acq On : 19 Apr 2019 10:31  
Operator : SY/MD  
Sample : K2402-09MSD  
Misc : 5.00G/10mL/MSVOA\_V/SOIL  
ALS Vial : 1 Sample Multiplier: 1

Instrument :  
MSVOA\_V  
ClientSampleId :  
GAHH9MSD

Quant Time: Apr 20 02:30:51 2019  
Quant Method : Z:\VOASRV\HPCHEM1\MSVOA\_V\METHOD\SOM2VLM041819S.M  
Quant Title : VOC Analysis  
QLast Update : Sat Apr 20 02:27:31 2019  
Response via : Initial Calibration

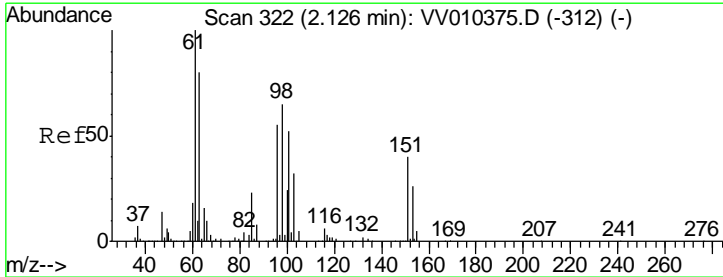
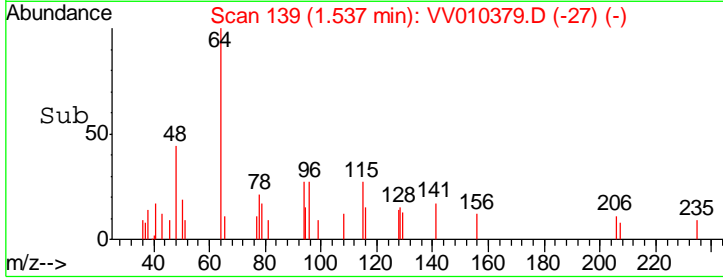
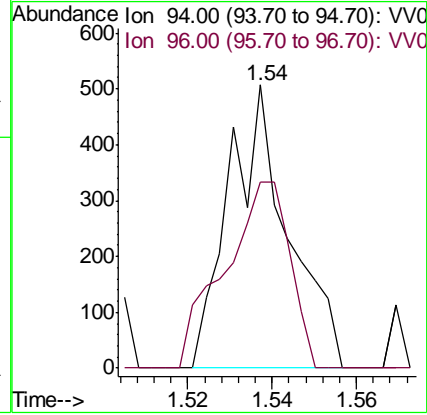
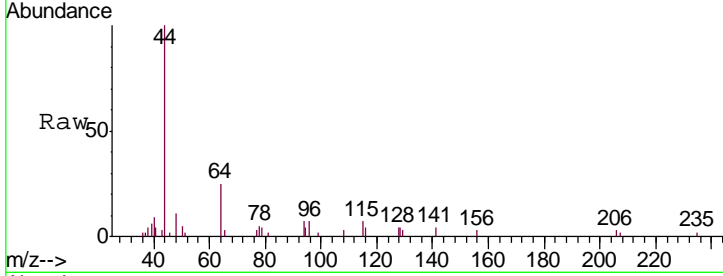




#6  
 Bromomethane  
 Concen: 1.368 ug/L  
 RT: 1.54 min Scan# 139  
 Delta R.T. 0.03 min  
 Lab File: VV010379.D  
 Acq: 19 Apr 2019 10:31

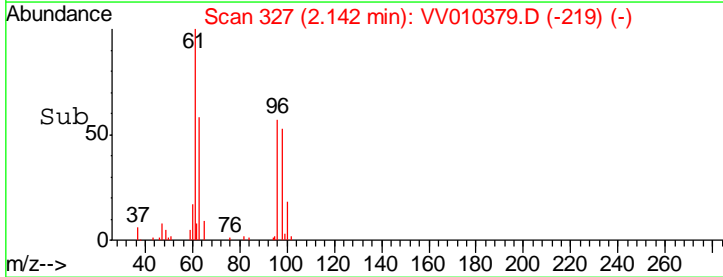
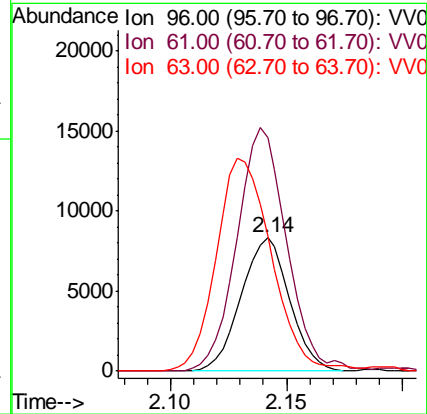
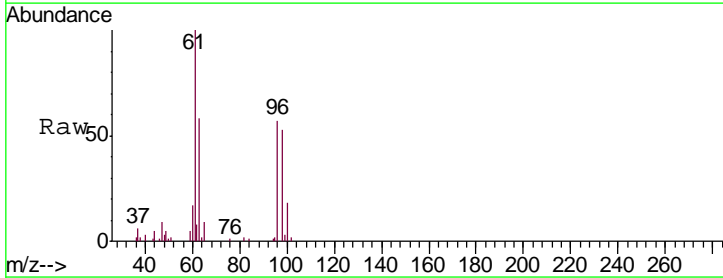
Instrument :  
 MSVOA\_V  
 ClientSampleId :  
 GAHH9MSD

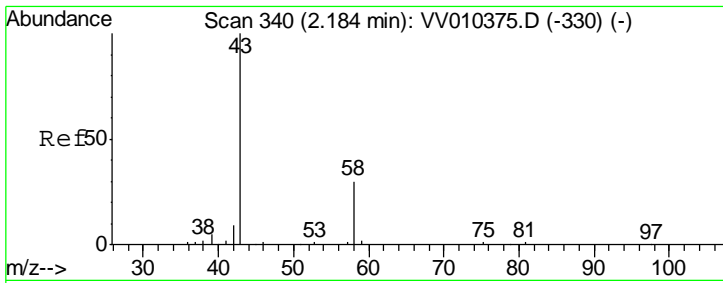
Tgt Ion: 94 Resp: 493  
 Ion Ratio Lower Upper  
 94 100  
 96 73.0 9.3 177.1



#12  
 1,1-Dichloroethene  
 Concen: 22.701 ug/L  
 RT: 2.14 min Scan# 327  
 Delta R.T. 0.02 min  
 Lab File: VV010379.D  
 Acq: 19 Apr 2019 10:31

Tgt Ion: 96 Resp: 12067  
 Ion Ratio Lower Upper  
 96 100  
 61 175.2 124.7 231.5  
 63 101.7 88.7 164.7

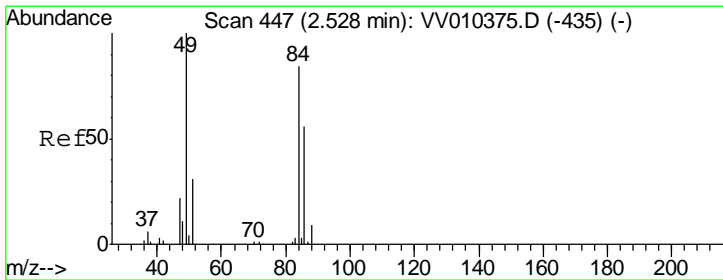
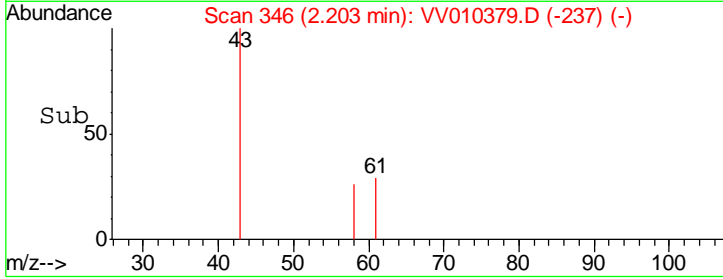
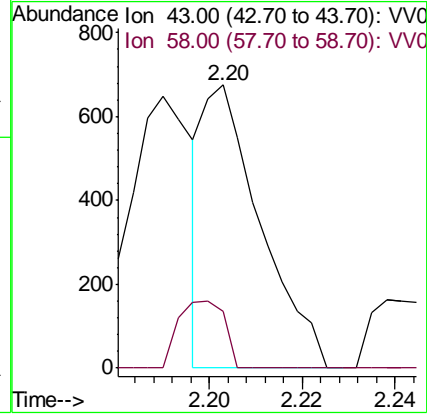
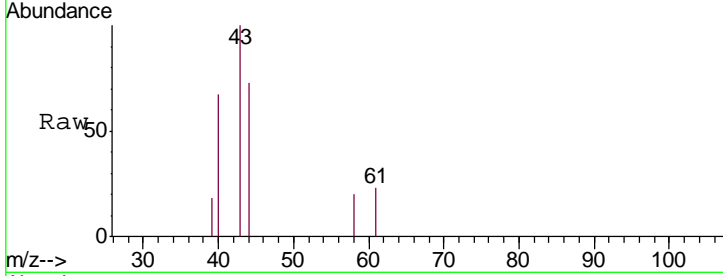




#13  
 Acetone  
 Concen: 3.396 ug/L  
 RT: 2.20 min Scan# 346  
 Delta R.T. 0.02 min  
 Lab File: VV010379.D  
 Acq: 19 Apr 2019 10:31

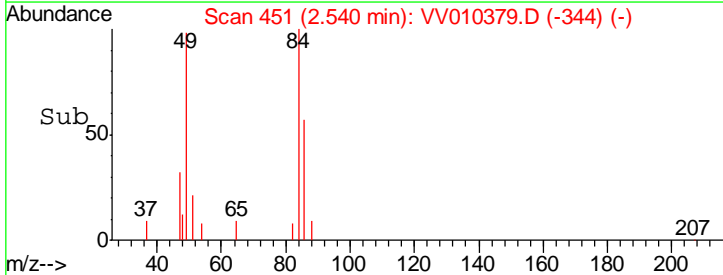
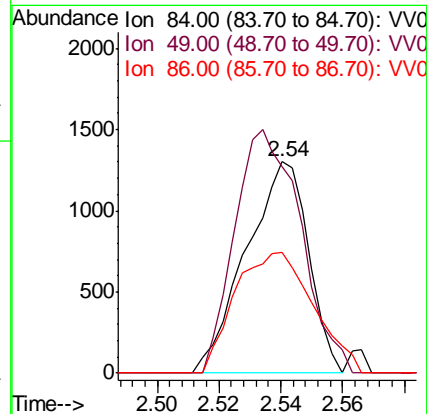
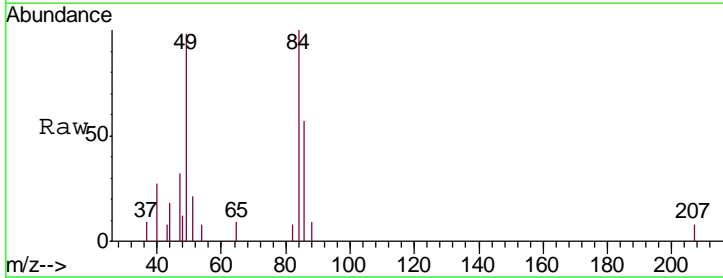
Instrument :  
 MSVOA\_V  
 ClientSampled :  
 GAHH9MSD

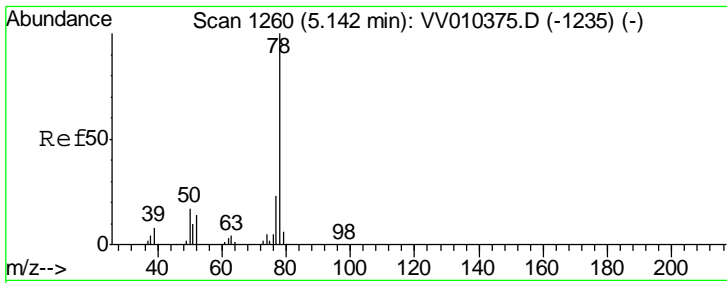
Tgt Ion	Resp	Lower	Upper
43	100		
58	19.1	0.0	60.0



#16  
 Methylene chloride  
 Concen: 2.788 ug/L  
 RT: 2.54 min Scan# 451  
 Delta R.T. 0.01 min  
 Lab File: VV010379.D  
 Acq: 19 Apr 2019 10:31

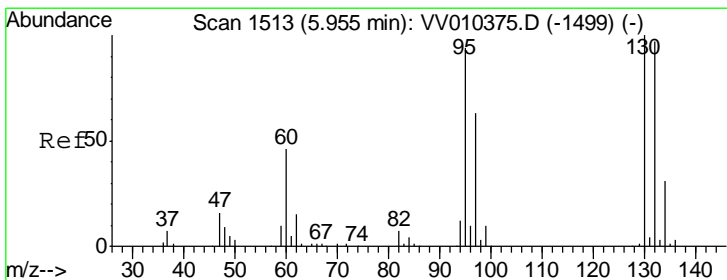
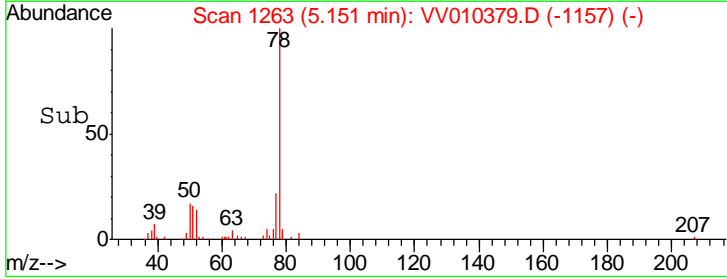
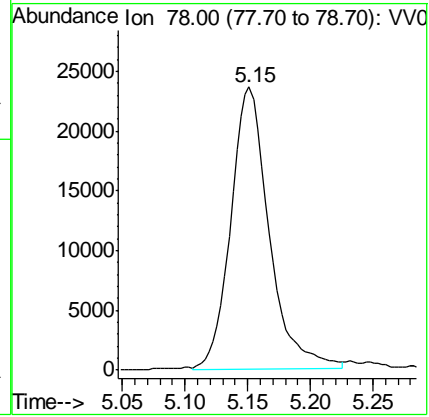
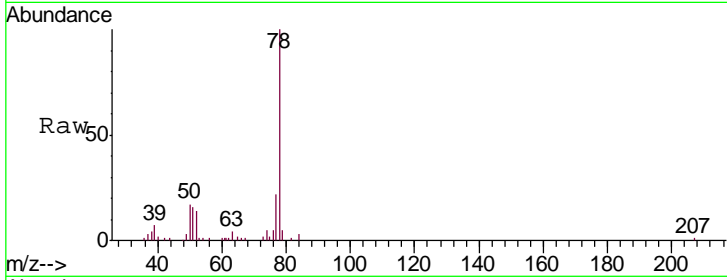
Tgt Ion	Resp	Lower	Upper
84	100		
49	98.0	83.8	155.6
86	57.4	46.1	85.5





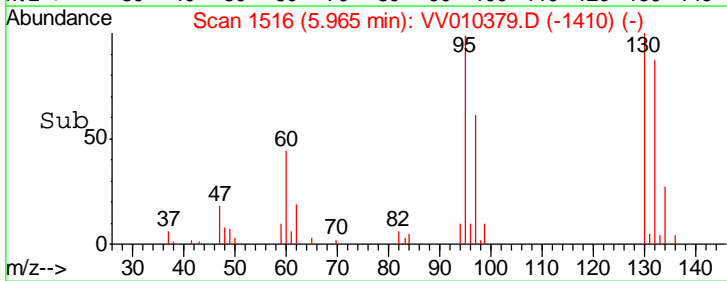
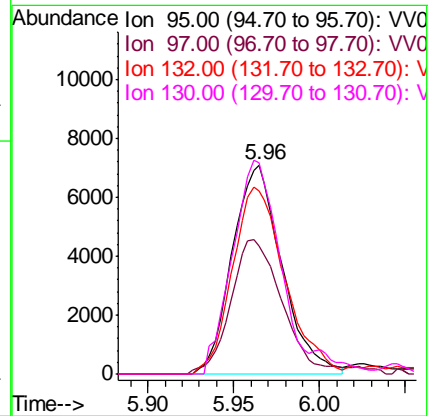
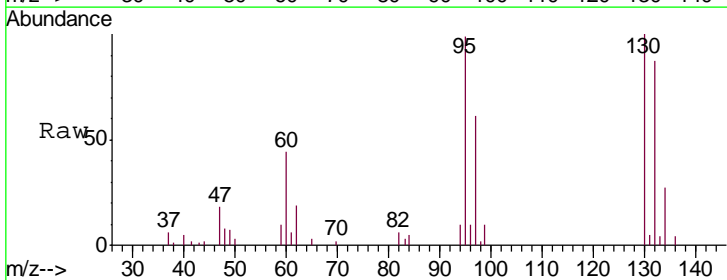
#34  
Benzene  
Concen: 26.980 ug/L  
RT: 5.15 min Scan# 1263  
Delta R.T. 0.01 min  
Lab File: VV010379.D  
Acq: 19 Apr 2019 10:31  
Tgt Ion: 78 Resp: 50385

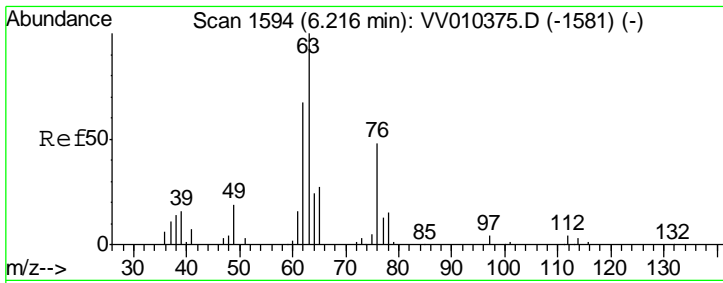
Instrument : MSVOA\_V  
ClientSampled : GAHH9MSD



#35  
Trichloroethene  
Concen: 25.785 ug/L  
RT: 5.96 min Scan# 1516  
Delta R.T. 0.01 min  
Lab File: VV010379.D  
Acq: 19 Apr 2019 10:31  
Tgt Ion: 95 Resp: 14247

Ion	Ratio	Lower	Upper
95	100		
97	66.6	45.6	84.8
132	94.0	71.5	132.7
130	95.3	74.0	137.4

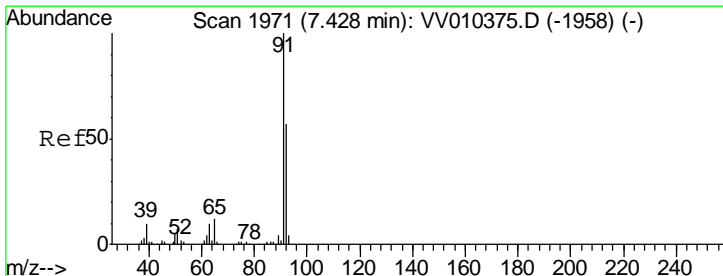
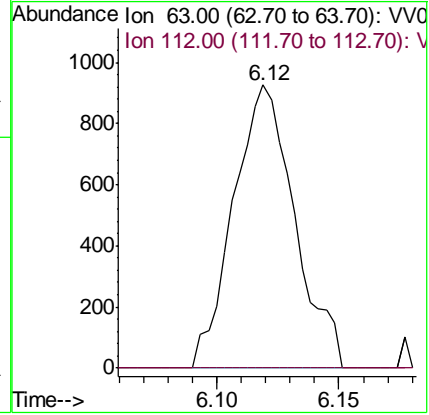
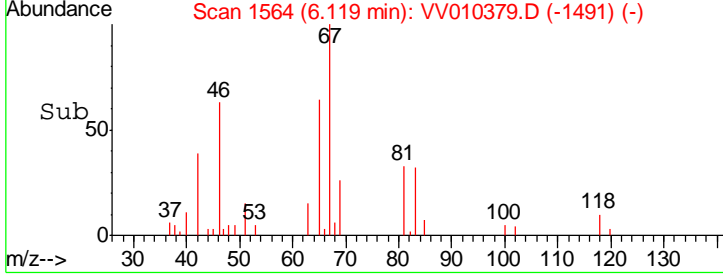
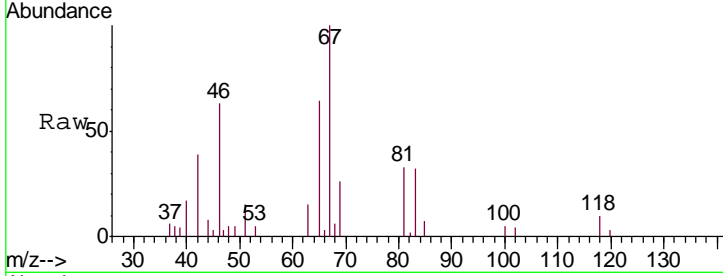




#40  
 1,2-Dichloropropane  
 Concen: 3.361 ug/L  
 RT: 6.12 min Scan# 1564  
 Delta R.T. -0.10 min  
 Lab File: VV010379.D  
 Acq: 19 Apr 2019 10:31

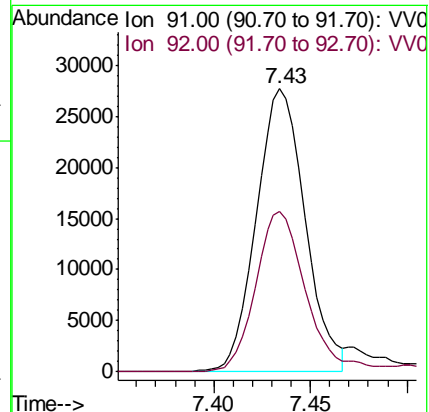
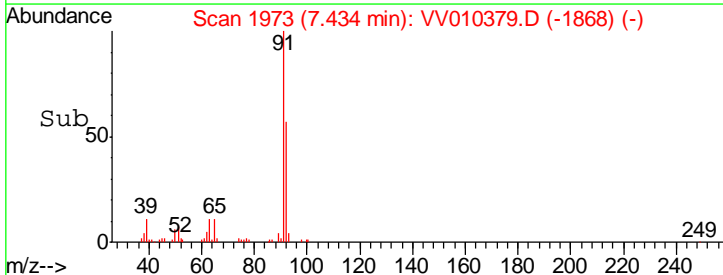
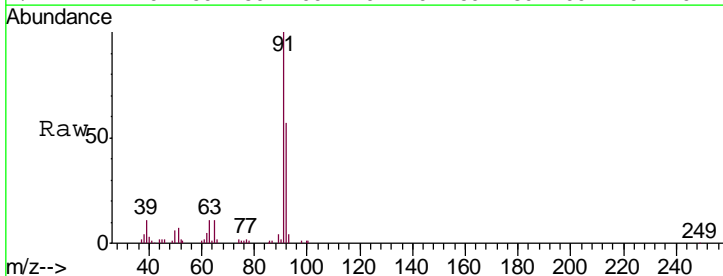
Instrument : MSVOA\_V  
 ClientSampled : GAHH9MSD

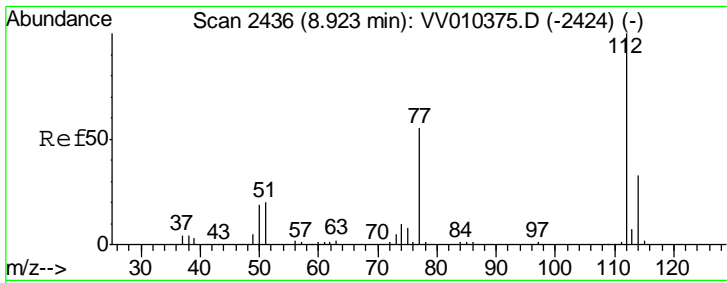
Tgt Ion: 63 Resp: 1610  
 Ion Ratio Lower Upper  
 63 100  
 112 0.0 3.6 5.4#



#44  
 Toluene  
 Concen: 23.087 ug/L  
 RT: 7.43 min Scan# 1973  
 Delta R.T. 0.01 min  
 Lab File: VV010379.D  
 Acq: 19 Apr 2019 10:31

Tgt Ion: 91 Resp: 48607  
 Ion Ratio Lower Upper  
 91 100  
 92 56.6 40.1 74.5

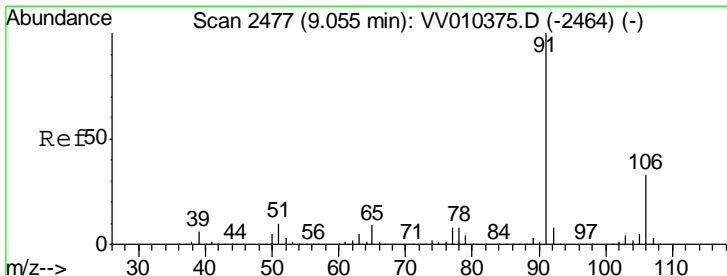
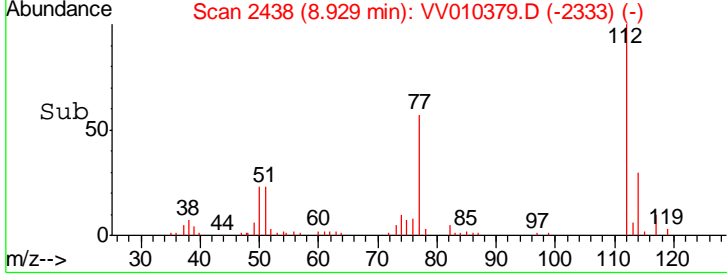
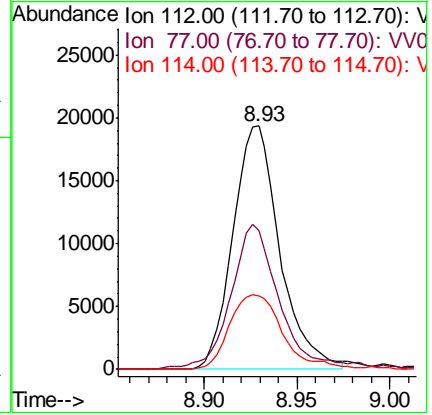
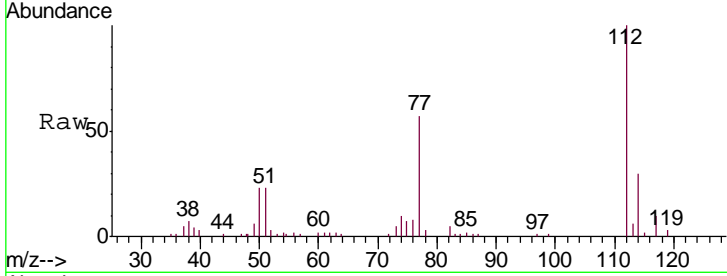




#52  
 Chlorobenzene  
 Concen: 23.254 ug/L  
 RT: 8.93 min Scan# 2438  
 Delta R.T. 0.01 min  
 Lab File: VV010379.D  
 Acq: 19 Apr 2019 10:31

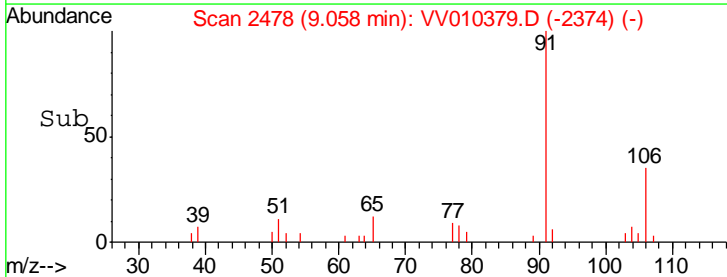
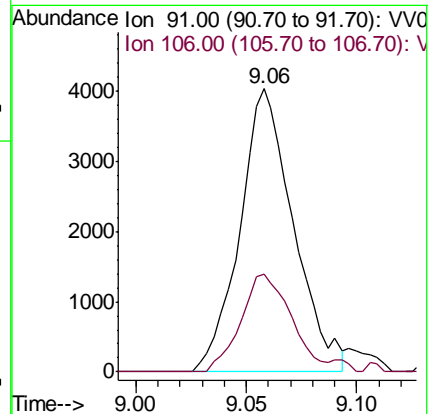
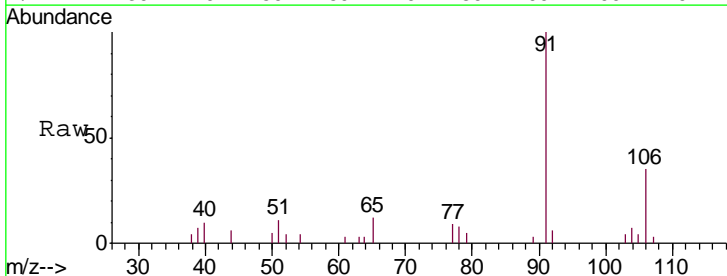
Instrument : MSVOA\_V  
 ClientSampled : GAHH9MSD

Tgt Ion	Resp	Lower	Upper
112	34065		
77	57.2	43.0	64.4
114	30.4	22.5	41.9

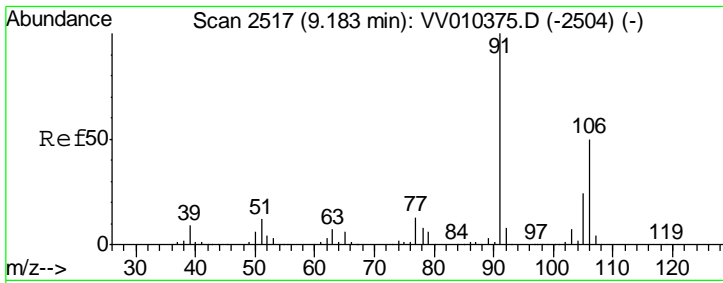


#53  
 Ethylbenzene  
 Concen: 2.840 ug/L  
 RT: 9.06 min Scan# 2478  
 Delta R.T. 0.00 min  
 Lab File: VV010379.D  
 Acq: 19 Apr 2019 10:31

Tgt Ion	Resp	Lower	Upper
91	6793		
106	34.7	22.5	41.9



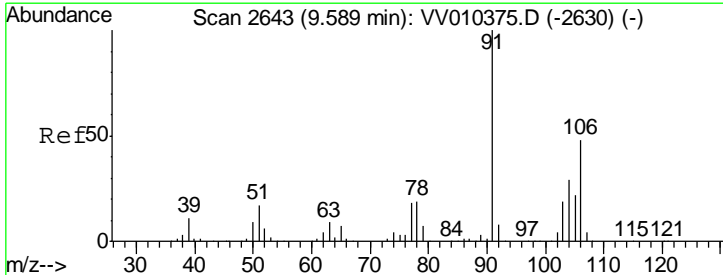
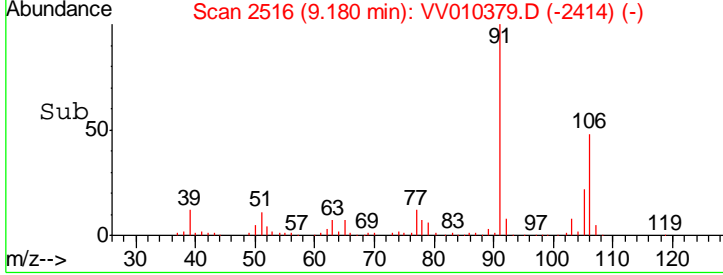
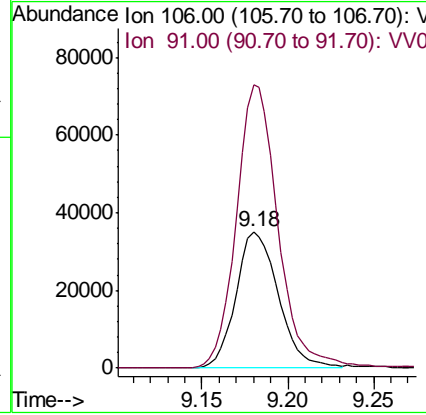
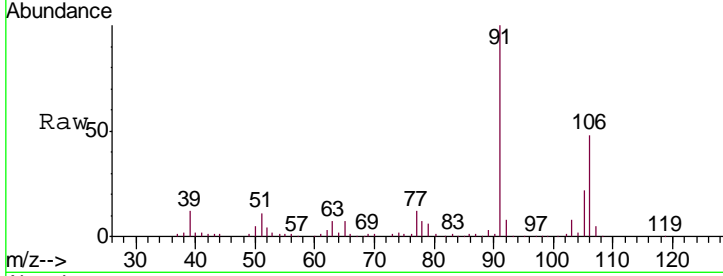




#54  
 m,p-Xylene  
 Concen: 65.350 ug/L  
 RT: 9.18 min Scan# 2516  
 Delta R.T. -0.00 min  
 Lab File: VV010379.D  
 Acq: 19 Apr 2019 10:31

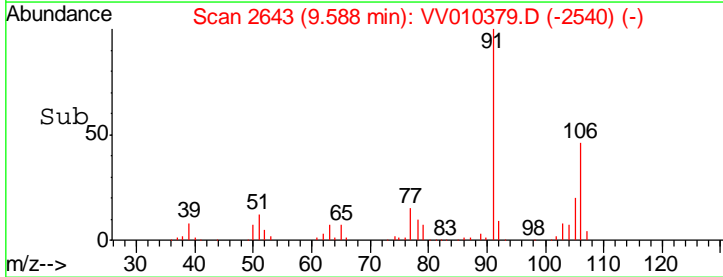
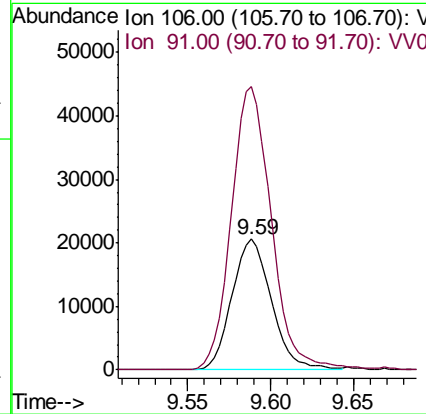
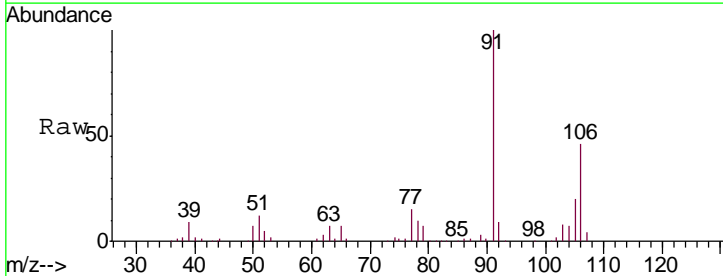
**Instrument :**  
 MSVOA\_V  
**ClientSampled :**  
 GAHH9MSD

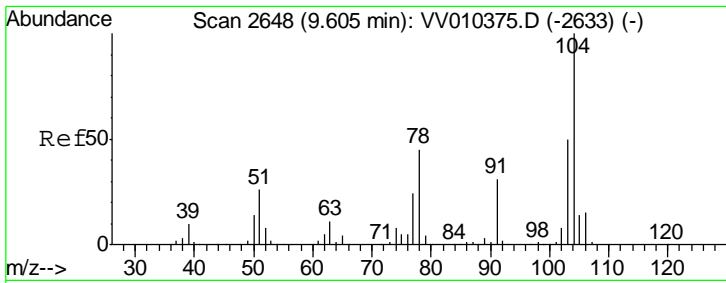
Tgt Ion:106 Resp: 60508  
 Ion Ratio Lower Upper  
 106 100  
 91 207.6 141.6 263.0



#55  
 o-xylene  
 Concen: 38.252 ug/L  
 RT: 9.59 min Scan# 2643  
 Delta R.T. -0.00 min  
 Lab File: VV010379.D  
 Acq: 19 Apr 2019 10:31

Tgt Ion:106 Resp: 34158  
 Ion Ratio Lower Upper  
 106 100  
 91 217.0 150.1 278.9

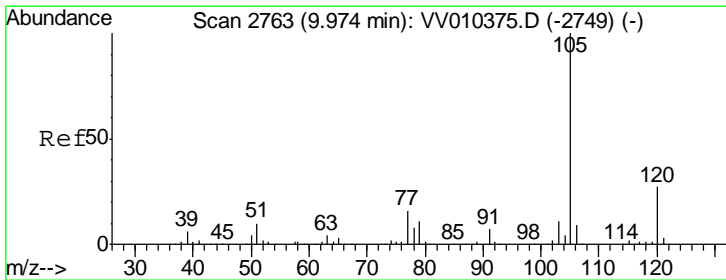
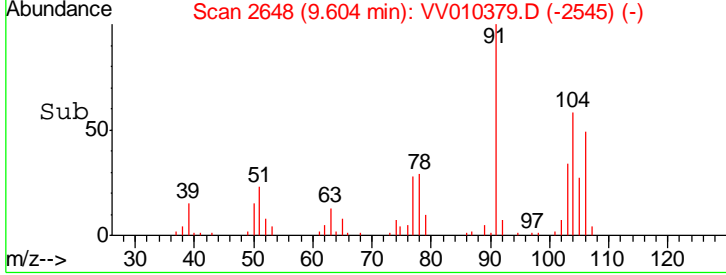
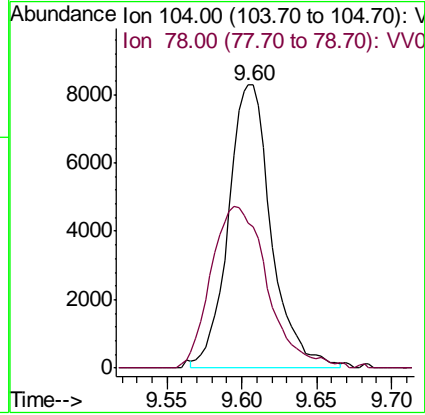
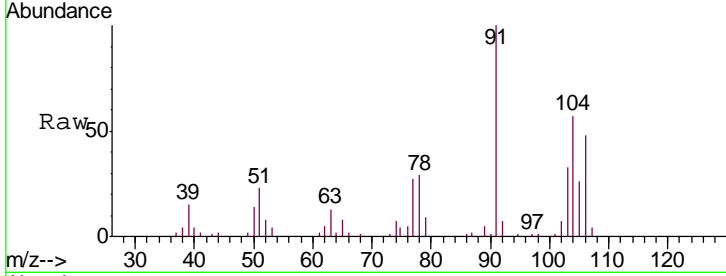




#56  
 Styrene  
 Concen: 10.883 ug/L  
 RT: 9.60 min Scan# 2648  
 Delta R.T. -0.00 min  
 Lab File: VV010379.D  
 Acq: 19 Apr 2019 10:31

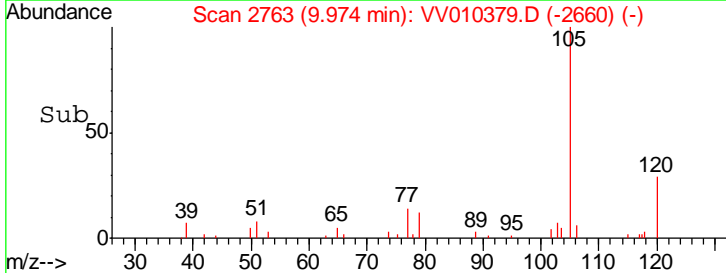
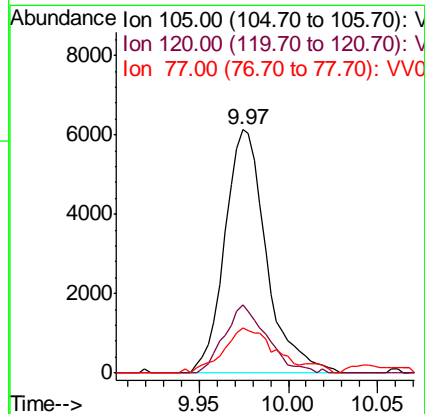
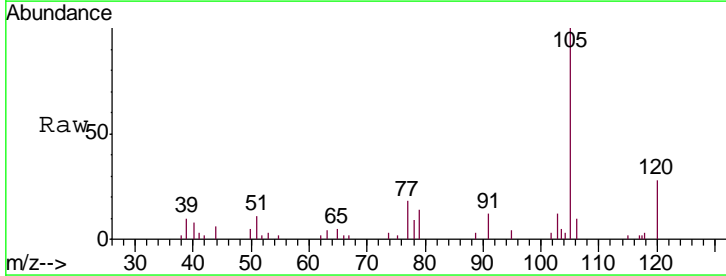
Instrument : MSVOA\_V  
 ClientSampled : GAHH9MSD

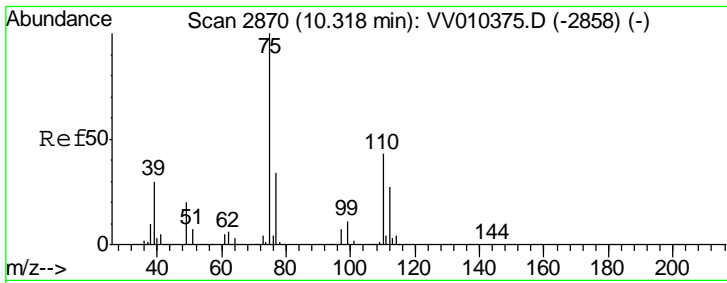
Tgt Ion	Resp	Lower	Upper
104	16595		
78	51.4	30.7	56.9



#57  
 Isopropylbenzene  
 Concen: 4.164 ug/L  
 RT: 9.97 min Scan# 2763  
 Delta R.T. -0.00 min  
 Lab File: VV010379.D  
 Acq: 19 Apr 2019 10:31

Tgt Ion	Resp	Lower	Upper
105	9909		
120	27.8	21.9	32.9
77	21.9	13.0	19.6#

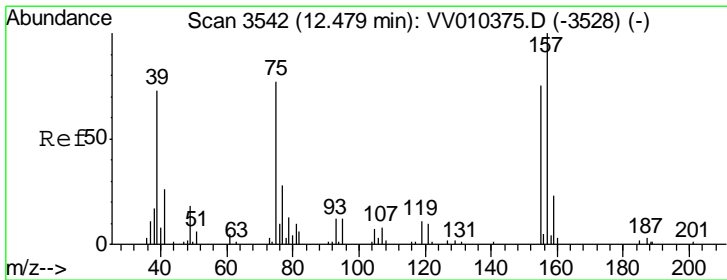
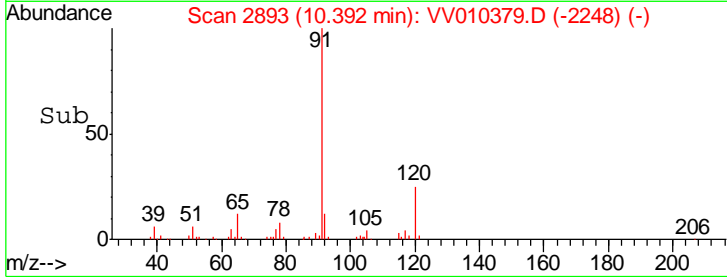
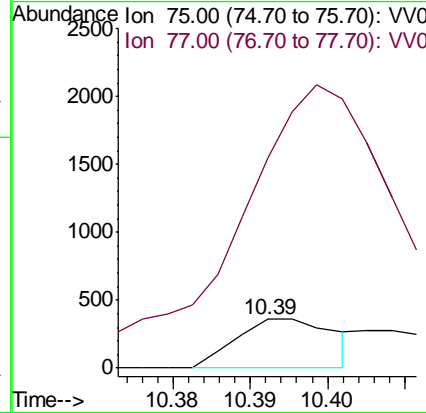
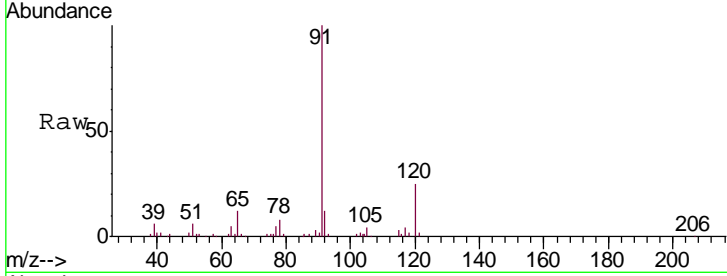




#59  
 1,2,3-Trichloropropane  
 Concen: 0.790 ug/L  
 RT: 10.39 min Scan# 2893  
 Delta R.T. 0.07 min  
 Lab File: VV010379.D  
 Acq: 19 Apr 2019 10:31

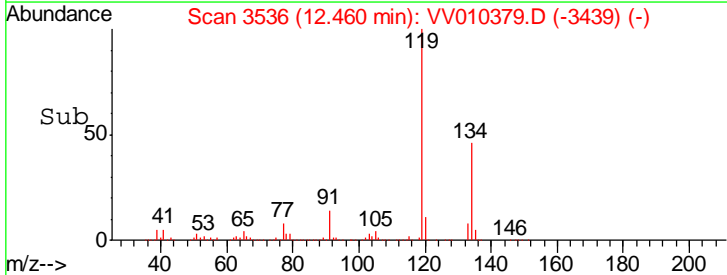
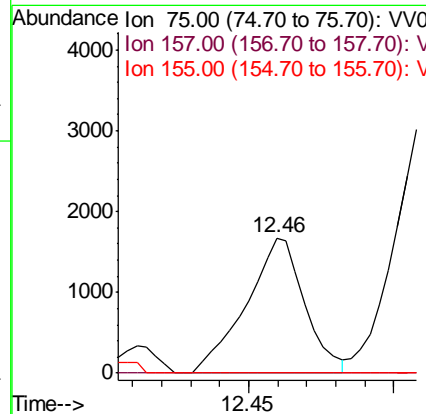
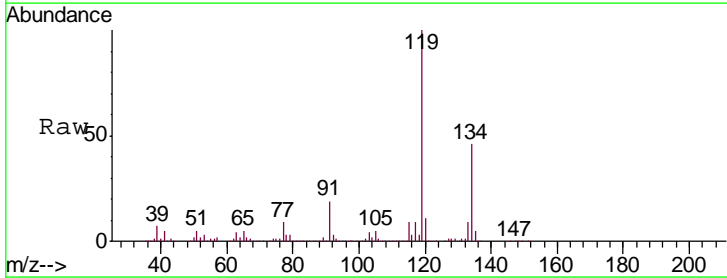
Instrument :  
 MSVOA\_V  
 ClientSampled :  
 GAHH9MSD

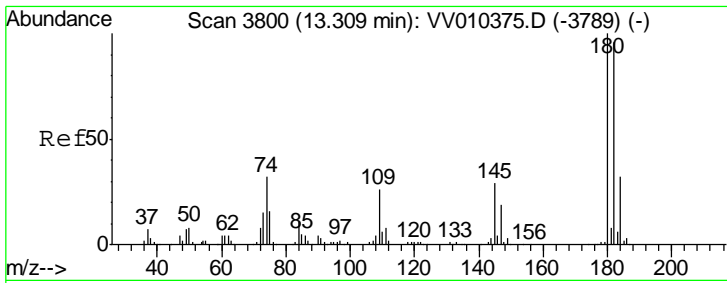
Tgt Ion: 75 Resp: 319  
 Ion Ratio Lower Upper  
 75 100  
 77 1022.6 25.8 38.8#



#66  
 1,2-Dibromo-3-chloropropane  
 Concen: 30.815 ug/L  
 RT: 12.46 min Scan# 3536  
 Delta R.T. -0.02 min  
 Lab File: VV010379.D  
 Acq: 19 Apr 2019 10:31

Tgt Ion: 75 Resp: 2347  
 Ion Ratio Lower Upper  
 75 100  
 157 0.0 100.6 151.0#  
 155 0.0 75.1 112.7#

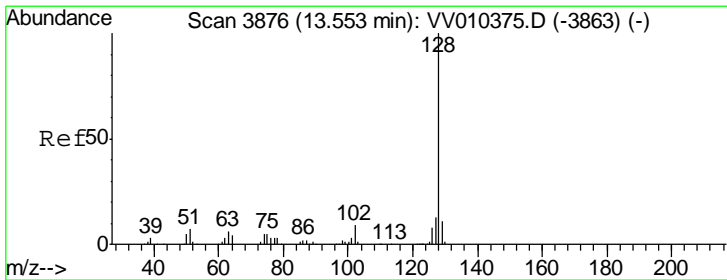
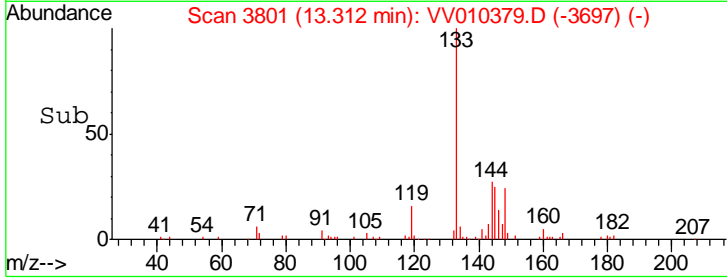
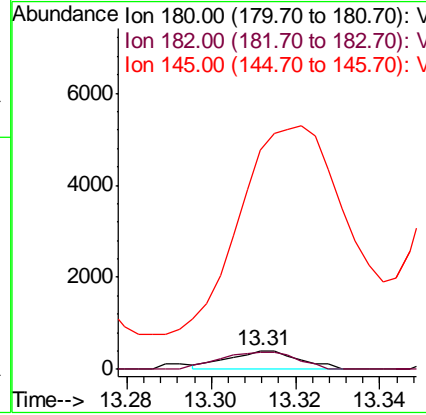
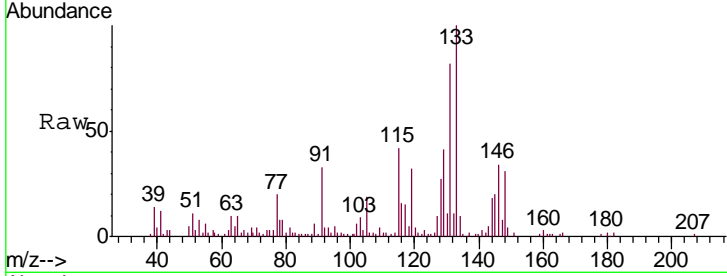




#68  
 1,2,4-trichlorobenzene  
 Concen: 0.719 ug/L  
 RT: 13.31 min Scan# 3801  
 Delta R.T. 0.00 min  
 Lab File: VV010379.D  
 Acq: 19 Apr 2019 10:31

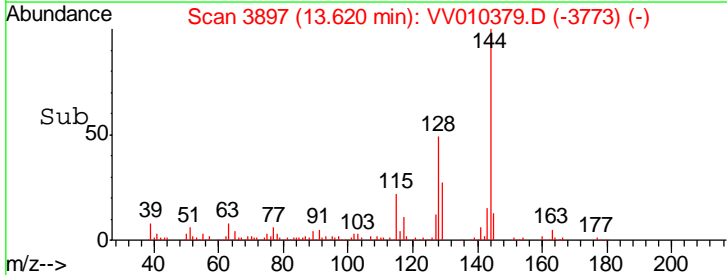
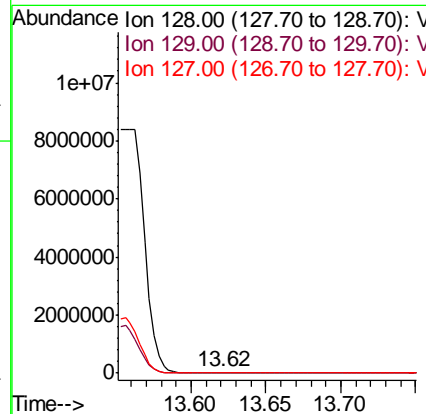
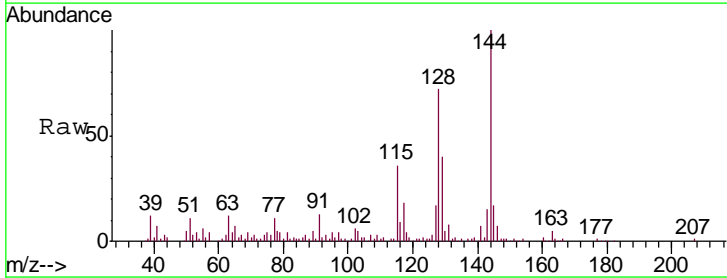
Instrument :  
 MSVOA\_V  
 ClientSampled :  
 GAHH9MSD

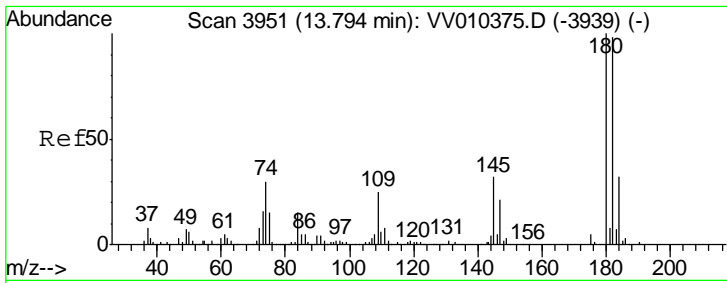
Tgt Ion	Resp	Lower	Upper
180	472		
182	101.3	77.3	115.9
145	1655.1	24.5	36.7#



#69  
 Naphthalene  
 Concen: 51.135 ug/L  
 RT: 13.62 min Scan# 3897  
 Delta R.T. 0.07 min  
 Lab File: VV010379.D  
 Acq: 19 Apr 2019 10:31

Tgt Ion	Resp	Lower	Upper
128	61956		
129	39.6	8.7	13.1#
127	10.0	10.7	16.1#





#70  
 1,2,3-Trichlorobenzene  
 Concen: 0.707 ug/L  
 RT: 13.79 min Scan# 3949  
 Delta R.T. -0.01 min  
 Lab File: VV010379.D  
 Acq: 19 Apr 2019 10:31

Instrument :  
 MSVOA\_V  
 ClientSampleId :  
 GAHH9MSD

Tgt Ion	Resp	Lower	Upper
180	451		
180	100		
182	130.6	77.4	116.0#
145	0.0	25.1	37.7#

