

Data Path : Z:\voasrv\HPCHEM1\MSVOA_V\Data\VW041823\
 Data File : VW030629.D
 Acq On : 18 Apr 2023 19:52
 Operator : SY/MD
 Sample : 02360-12DL 200X
 Misc : 5.0mL/MSVOA_V/WATER
 ALS Vial : 21 Sample Multiplier: 1

Instrument :
 MSVOA_V
 ClientSampleId :
 C0AP4DL

Manual Integrations
 APPROVED

Reviewed By :John Carlone 04/19/2023
 Supervised By :Mahesh Dadoda 04/20/2023

Quant Time: Apr 19 01:48:01 2023
 Quant Method : Z:\voasrv\HPCHEM1\MSVOA_V\Method\SFAMVLM041723WMA.M
 Quant Title : VOC Analysis
 QLast Update : Tue Apr 18 02:45:56 2023
 Response via : Initial Calibration

Compound	R.T.	QIon	Response	Conc	Units	Dev(Min)
Internal Standards						
1) 1,4-Difluorobenzene	5.542	114	224256	50.000	ug/L	0.00
28) Chlorobenzene-d5	8.792	117	219643	50.000	ug/L	0.00
58) 1,4-Dichlorobenzene-d4	11.194	152	101954	50.000	ug/L	0.00
System Monitoring Compounds						
4) Vinyl Chloride-d3	1.282	65	62090	37.768	ug/L	0.00
Spiked Amount	50.000	Range 60 - 135	Recovery =	75.540%		
7) Chloroethane-d5	1.536	69	54116m	39.282	ug/L	0.00
Spiked Amount	50.000	Range 70 - 130	Recovery =	78.560%		
11) 1,1-Dichloroethene-d2	2.066	65	31910	40.930	ug/L	0.00
Spiked Amount	50.000	Range 60 - 125	Recovery =	81.860%		
21) 2-Butanone-d5	3.799	46	85898	95.129	ug/L	0.00
Spiked Amount	100.000	Range 40 - 130	Recovery =	95.130%		
24) Chloroform-d	4.262	84	129539	43.480	ug/L	0.00
Spiked Amount	50.000	Range 70 - 125	Recovery =	86.960%		
26) 1,2-Dichloroethane-d4	4.950	65	89059	46.496	ug/L	0.00
Spiked Amount	50.000	Range 70 - 125	Recovery =	93.000%		
32) Benzene-d6	4.973	84	232180	44.710	ug/L	0.00
Spiked Amount	50.000	Range 70 - 125	Recovery =	89.420%		
36) 1,2-Dichloropropane-d6	5.998	67	73351	45.473	ug/L	0.00
Spiked Amount	50.000	Range 70 - 120	Recovery =	90.940%		
41) Toluene-d8	7.252	98	202944	41.624	ug/L	0.00
Spiked Amount	50.000	Range 80 - 120	Recovery =	83.240%		
43) trans-1,3-Dichloroprop...	7.561	79	33771	41.538	ug/L	0.00
Spiked Amount	50.000	Range 60 - 125	Recovery =	83.080%		
47) 2-Hexanone-d5	8.034	63	54231	85.342	ug/L	0.00
Spiked Amount	100.000	Range 45 - 130	Recovery =	85.340%		
56) 1,1,2,2-Tetrachloroeth...	10.162	84	102174	43.652	ug/L	0.00
Spiked Amount	50.000	Range 65 - 120	Recovery =	87.300%		
66) 1,2-Dichlorobenzene-d4	11.570	152	79034	48.771	ug/L	0.00
Spiked Amount	50.000	Range 80 - 120	Recovery =	97.540%		
Target Compounds						
34) Trichloroethene	5.841	95	174165	100.389	ug/L	98

(#) = qualifier out of range (m) = manual integration (+) = signals summed

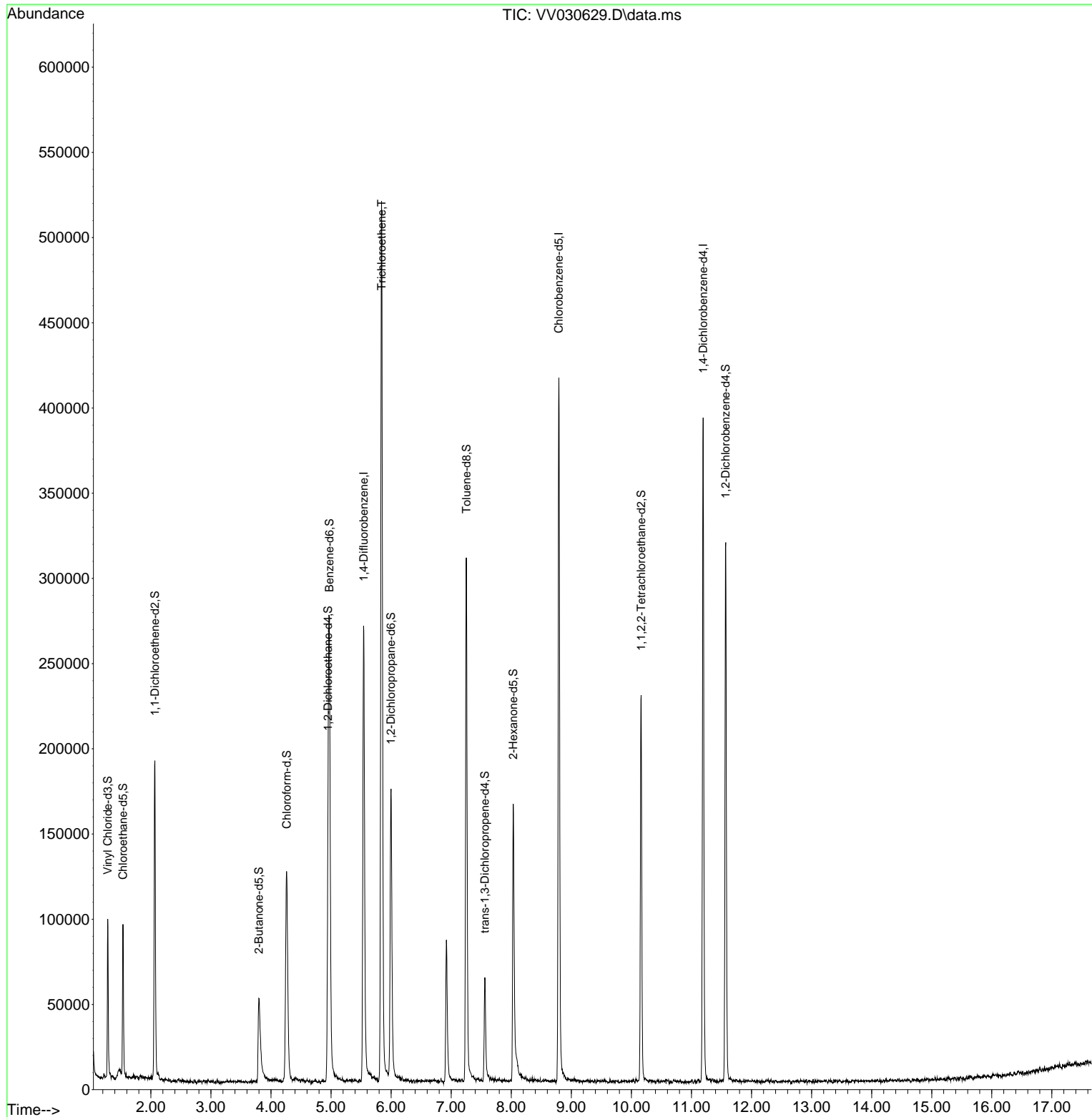
Data Path : Z:\voasrv\HPCHEM1\MSVOA_V\Data\VV041823\
 Data File : VV030629.D
 Acq On : 18 Apr 2023 19:52
 Operator : SY/MD
 Sample : 02360-12DL 200X
 Misc : 5.0mL/MSVOA_V/WATER
 ALS Vial : 21 Sample Multiplier: 1

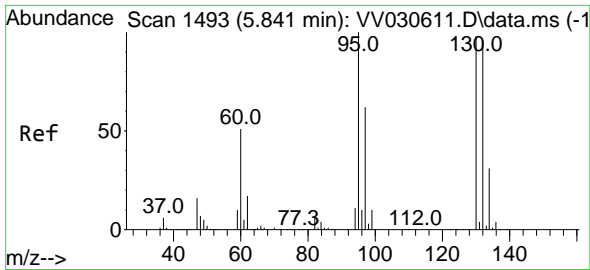
Instrument :
 MSVOA_V
 ClientSampleId :
 C0AP4DL

Manual Integrations
APPROVED

Reviewed By :John Carlone 04/19/2023
 Supervised By :Mahesh Dadoda 04/20/2023

Quant Time: Apr 19 01:48:01 2023
 Quant Method : Z:\voasrv\HPCHEM1\MSVOA_V\Method\SFAMVLM041723WMA.M
 Quant Title : VOC Analysis
 QLast Update : Tue Apr 18 02:45:56 2023
 Response via : Initial Calibration





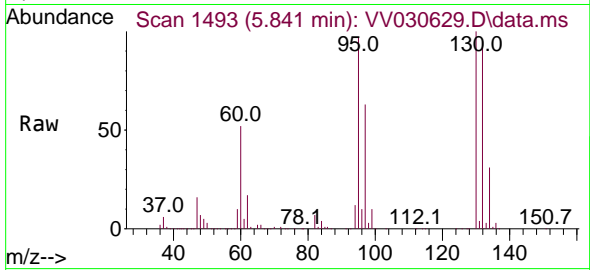
#34
 Trichloroethene
 Concen: 100.389 ug/L
 RT: 5.841 min Scan# 1493
 Delta R.T. -0.000 min
 Lab File: VV030629.D
 Acq: 18 Apr 2023 19:52

Instrument :

MSVOA_V

ClientSampleId :

C0AP4DL



Tgt Ion: 95 Resp: 17416
 Ion Ratio Lower Upper
 95 100
 97 64.7 45.8 85.2
 132 98.2 70.6 131.2
 130 103.1 70.9 131.7

Manual Integrations

APPROVED

Reviewed By :John Carlone 04/19/2023

Supervised By :Mahesh Dadoda 04/20/2023

