

Data Path : Z:\voasrv\HPCHEM1\MSVOA_V\Data\VV041823\
 Data File : VV030635.D
 Acq On : 18 Apr 2023 22:16
 Operator : SY/MD
 Sample : 02334-09 200X
 Misc : 5.0mL/MSVOA_V/WATER
 ALS Vial : 27 Sample Multiplier: 1

Instrument :
 MSVOA_V
 ClientSampleId :
 COMJ3

Integration Parameters: LSCINT.P
 Integrator: RTE
 Smoothing : OFF
 Sampling : 1
 Start Thrs : 0.2
 Stop Thrs : 0
 Filtering: 5
 Min Area: 0 % of largest Peak
 Max Peaks: 100
 Peak Location: TOP

If leading or trailing edge < 100 prefer < Baseline drop else tangent >
 Peak separation: 5

Method : Z:\voasrv\HPCHEM1\MSVOA_V\Method\SFAMVLM041723WMA.M
 Title : VOC Analysis

Signal : TIC: VV030635.D\data.ms

peak #	R.T. min	first scan	max scan	last scan	PK TY	peak height	corr. area	corr. % max.	% of total
1	1.281	69	75	88	rVB	96549	104820	10.00%	1.560%
2	1.535	148	154	163	rVB	87869	99405	9.48%	1.479%
3	2.066	310	319	331	rBV	185961	271407	25.89%	4.038%
4	2.558	470	472	474	rBV3	1365	679	0.06%	0.010%
5	2.577	474	478	481	rVV6	1114	862	0.08%	0.013%
6	2.799	545	547	550	rBV4	1544	1016	0.10%	0.015%
7	2.838	556	559	563	rVB6	1905	1144	0.11%	0.017%
8	2.860	563	566	570	rBV6	1373	798	0.08%	0.012%
9	3.072	630	632	634	rVB3	1649	683	0.07%	0.010%
10	3.175	662	664	670	rVB6	2137	1648	0.16%	0.025%
11	3.207	670	674	677	rBV5	1325	998	0.10%	0.015%
12	3.477	754	758	760	rVV5	1233	1150	0.11%	0.017%
13	3.542	775	778	781	rBV4	1881	1419	0.14%	0.021%
14	3.587	790	792	794	rBV4	1755	817	0.08%	0.012%
15	3.641	807	809	812	rVB3	1667	1033	0.10%	0.015%
16	3.728	832	836	838	rBV5	1737	1340	0.13%	0.020%
17	3.799	849	858	889	rBV	47993	137786	13.14%	2.050%
18	4.047	933	935	939	rVB5	2170	1401	0.13%	0.021%
19	4.259	987	1001	1021	rBV	122158	309413	29.51%	4.604%
20	4.542	1086	1089	1090	rBV3	1454	851	0.08%	0.013%
21	4.728	1145	1147	1150	rBV4	2410	1550	0.15%	0.023%
22	4.821	1171	1176	1178	rBV5	2320	2184	0.21%	0.032%
23	4.857	1184	1187	1190	rVB5	1582	999	0.10%	0.015%
24	4.876	1190	1193	1195	rBV4	1619	722	0.07%	0.011%
25	4.892	1196	1198	1201	rBV4	1136	743	0.07%	0.011%
26	4.966	1205	1221	1228	rBV2	279437	689502	65.76%	10.259%
27	5.542	1388	1400	1429	rBV	283194	600921	57.31%	8.941%
28	5.767	1468	1470	1473	rBV3	1870	1218	0.12%	0.018%
29	5.998	1531	1542	1562	rVB	166701	336780	32.12%	5.011%
30	6.362	1651	1655	1658	rBV6	2137	1636	0.16%	0.024%
31	6.458	1682	1685	1688	rBV5	1706	1237	0.12%	0.018%
32	6.487	1692	1694	1697	rVB4	1148	703	0.07%	0.010%
33	6.503	1697	1699	1701	rBV2	1317	690	0.07%	0.010%
34	6.542	1708	1711	1713	rBV4	2217	1512	0.14%	0.022%
35	6.789	1784	1788	1791	rBV6	1266	1034	0.10%	0.015%
36	6.921	1819	1829	1845	rBV2	82007	156639	14.94%	2.331%

Data Path : Z:\voasrv\HPCHEM1\MSVOA_V\Data\VW041823\
 Data File : VW030635.D
 Acq On : 18 Apr 2023 22:16
 Operator : SY/MD
 Sample : 02334-09 200X
 Misc : 5.0mL/MSVOA_V/WATER
 ALS Vial : 27 Sample Multiplier: 1

Instrument :
 MSVOA_V
 ClientSampleId :
 COMJ3

Integration Parameters: LSCINT.P

Integrator: RTE
 Smoothing : OFF
 Sampling : 1
 Start Thrs: 0.2
 Stop Thrs : 0

Filtering: 5
 Min Area: 0 % of largest Peak
 Max Peaks: 100
 Peak Location: TOP

If leading or trailing edge < 100 prefer < Baseline drop else tangent >
 Peak separation: 5

Method : Z:\voasrv\HPCHEM1\MSVOA_V\Method\SFAMVLM041723WMA.M
 Title : VOC Analysis

37	7.194	1910	1914	1917	rBV5	2923	2099	0.20%	0.031%
38	7.252	1920	1932	1949	rBV	308581	553774	52.82%	8.240%
39	7.561	2020	2028	2044	rBV2	58329	101643	9.69%	1.512%
40	7.895	2130	2132	2135	rBV4	1778	1311	0.13%	0.020%
41	7.956	2146	2151	2152	rBV4	1869	1734	0.17%	0.026%
42	8.034	2161	2175	2191	rBV	158723	304653	29.06%	4.533%
43	8.503	2319	2321	2323	rBV3	1644	854	0.08%	0.013%
44	8.590	2346	2348	2349	rBV2	1742	717	0.07%	0.011%
45	8.796	2400	2412	2414	rBV	464250	644370	61.46%	9.588%
46	9.130	2514	2516	2521	rBV6	1800	1505	0.14%	0.022%
47	9.323	2572	2576	2577	rBV4	1440	899	0.09%	0.013%
48	9.461	2616	2619	2622	rBV5	1285	1209	0.12%	0.018%
49	9.558	2645	2649	2651	rBV4	2527	1932	0.18%	0.029%
50	9.599	2659	2662	2664	rVB4	1664	870	0.08%	0.013%
51	9.763	2711	2713	2716	rBV3	980	716	0.07%	0.011%
52	9.818	2728	2730	2732	rBV3	1660	950	0.09%	0.014%
53	9.960	2772	2774	2776	rBV4	1458	675	0.06%	0.010%
54	9.982	2778	2781	2785	rVV6	2099	1500	0.14%	0.022%
55	10.162	2824	2837	2852	rBV	236206	375869	35.85%	5.593%
56	10.355	2892	2897	2901	rBV7	2423	2053	0.20%	0.031%
57	10.426	2915	2919	2921	rBV5	1647	1216	0.12%	0.018%
58	10.455	2926	2928	2930	rBV3	1380	824	0.08%	0.012%
59	10.612	2975	2977	2981	rBV4	1725	1585	0.15%	0.024%
60	10.705	3001	3006	3009	rBV6	2214	1917	0.18%	0.029%
61	10.850	3048	3051	3054	rBV4	1277	864	0.08%	0.013%
62	10.953	3080	3083	3087	rVB7	1785	1205	0.11%	0.018%
63	10.988	3091	3094	3095	rBV3	1286	732	0.07%	0.011%
64	11.040	3106	3110	3114	rBV6	2468	1746	0.17%	0.026%
65	11.069	3117	3119	3124	rVB6	1667	942	0.09%	0.014%
66	11.091	3124	3126	3129	rBV4	2242	1389	0.13%	0.021%
67	11.130	3129	3138	3146	rBV2	14277	23049	2.20%	0.343%
68	11.194	3148	3158	3182	rVB2	444435	1048458	100.00%	15.601%
69	11.496	3249	3252	3255	rVV4	1724	1277	0.12%	0.019%
70	11.574	3263	3276	3298	rBV3	381484	838663	79.99%	12.479%
71	11.773	3336	3338	3340	rVB3	2237	904	0.09%	0.013%
72	11.786	3340	3342	3344	rBV3	1411	712	0.07%	0.011%
73	11.863	3361	3366	3369	rBV6	1725	1623	0.15%	0.024%
74	11.956	3393	3395	3398	rBV4	2147	1331	0.13%	0.020%
75	12.027	3415	3417	3419	rBV3	1322	701	0.07%	0.010%
76	12.062	3423	3428	3430	rBV5	2094	1618	0.15%	0.024%

Data Path : Z:\voasrv\HPCHEM1\MSVOA_V\Data\VW041823\
 Data File : VW030635.D
 Acq On : 18 Apr 2023 22:16
 Operator : SY/MD
 Sample : 02334-09 200X
 Misc : 5.0mL/MSVOA_V/WATER
 ALS Vial : 27 Sample Multiplier: 1

Instrument :
 MSVOA_V
 ClientSampleId :
 COMJ3

Integration Parameters: LSCINT.P

Integrator: RTE
 Smoothing : OFF Filtering: 5
 Sampling : 1 Min Area: 0 % of largest Peak
 Start Thrs: 0.2 Max Peaks: 100
 Stop Thrs : 0 Peak Location: TOP

If leading or trailing edge < 100 prefer < Baseline drop else tangent >
 Peak separation: 5

Method : Z:\voasrv\HPCHEM1\MSVOA_V\Method\SFAMVLM041723WMA.M
 Title : VOC Analysis

77	12.130	3447	3449	3452	rVB3	1327	813	0.08%	0.012%
78	12.146	3452	3454	3458	rBV5	1779	1414	0.13%	0.021%
79	12.429	3540	3542	3545	rVB4	1929	1147	0.11%	0.017%
80	12.455	3546	3550	3551	rBV4	1100	723	0.07%	0.011%
81	12.509	3563	3567	3574	rBV9	2076	2411	0.23%	0.036%
82	12.667	3614	3616	3618	rBV2	1246	684	0.07%	0.010%
83	12.680	3618	3620	3622	rVV3	1167	611	0.06%	0.009%
84	12.738	3636	3638	3643	rBV5	1583	1179	0.11%	0.018%
85	12.808	3657	3660	3665	rBV6	1894	1679	0.16%	0.025%
86	12.831	3665	3667	3671	rVB4	1845	796	0.08%	0.012%
87	12.876	3679	3681	3682	rBV2	1536	611	0.06%	0.009%
88	12.905	3689	3690	3692	rVB2	2078	640	0.06%	0.010%
89	13.156	3764	3768	3770	rBV6	1366	1040	0.10%	0.015%
90	13.210	3776	3785	3793	rVV3	18471	29434	2.81%	0.438%
91	13.262	3798	3801	3802	rBV3	1680	785	0.07%	0.012%
92	13.307	3812	3815	3817	rBV4	1750	1226	0.12%	0.018%
93	13.336	3819	3824	3825	rBV4	2067	1195	0.11%	0.018%
94	13.455	3857	3861	3862	rBV3	1464	1174	0.11%	0.017%
95	13.609	3906	3909	3912	rVB5	1684	856	0.08%	0.013%
96	13.625	3912	3914	3915	rBV2	1599	768	0.07%	0.011%
97	13.683	3929	3932	3933	rBV3	2193	1120	0.11%	0.017%
98	13.940	4011	4012	4016	rVB3	1317	787	0.08%	0.012%
99	14.020	4035	4037	4041	rBV4	1463	1088	0.10%	0.016%
100	14.583	4209	4212	4216	rBV6	2284	1617	0.15%	0.024%

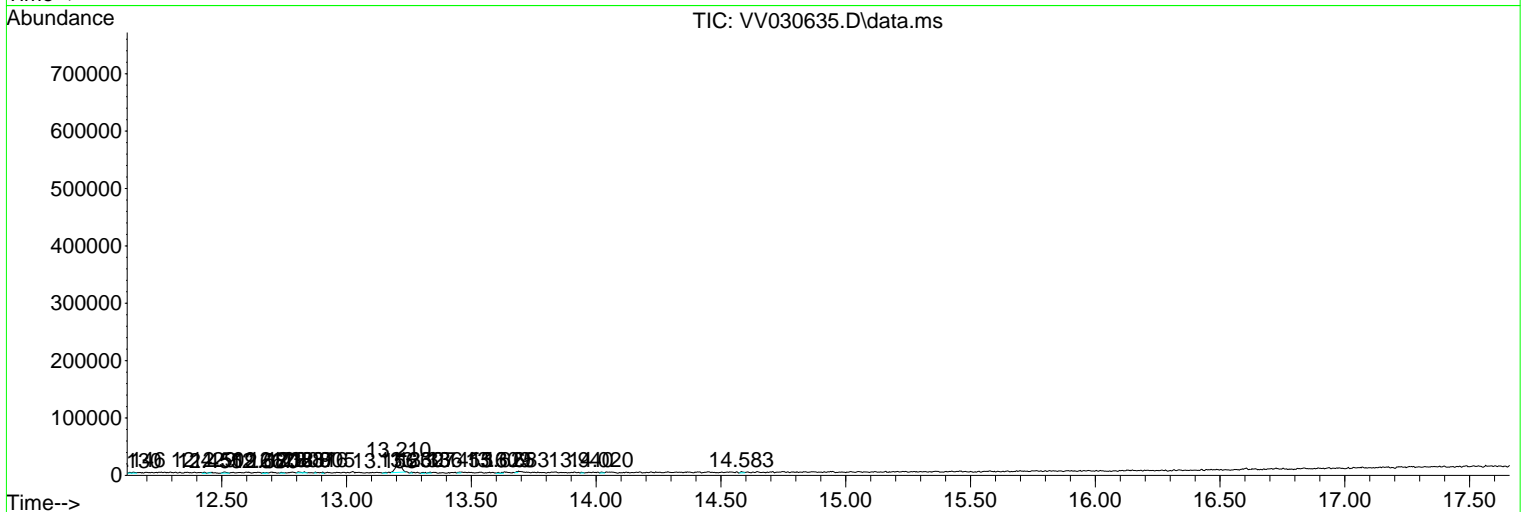
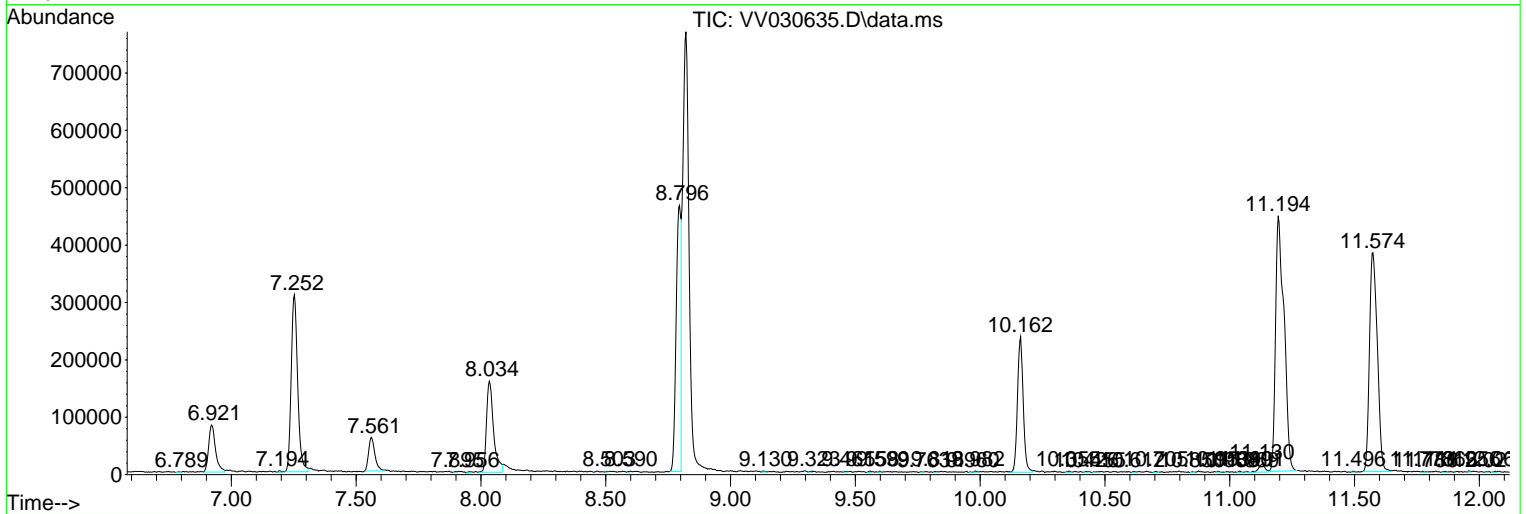
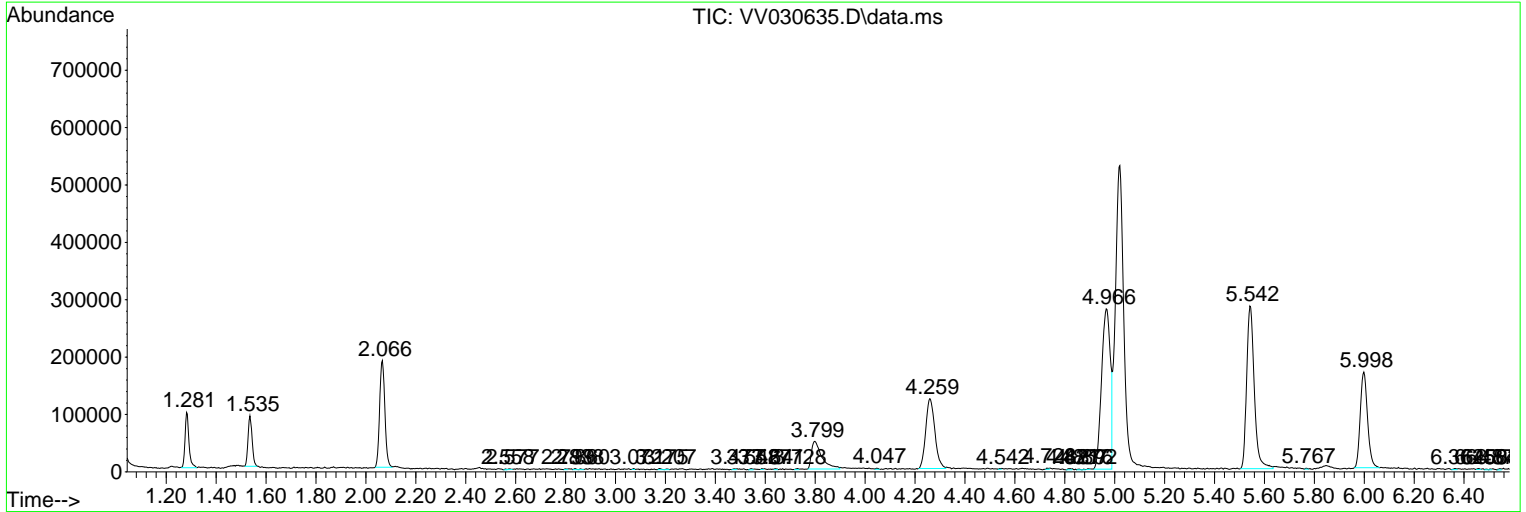
Sum of corrected areas: 6720627

Data Path : Z:\voasrv\HPCHEM1\MSVOA_V\Data\VV041823\
 Data File : VV030635.D
 Acq On : 18 Apr 2023 22:16
 Operator : SY/MD
 Sample : 02334-09 200X
 Misc : 5.0mL/MSVOA_V/WATER
 ALS Vial : 27 Sample Multiplier: 1

Instrument :
 MSVOA_V
 ClientSampleId :
 COMJ3

Quant Method : Z:\voasrv\HPCHEM1\MSVOA_V\Method\SFAMVLM041723WMA.M
 Quant Title : VOC Analysis

TIC Library : C:\Database\NIST20.L
 TIC Integration Parameters: LSCINT.P



Library Search Compound Report

Data Path : Z:\voasrv\HPCHEM1\MSVOA_V\Data\VV041823\
Data File : VV030635.D
Acq On : 18 Apr 2023 22:16
Operator : SY/MD
Sample : 02334-09 200X
Misc : 5.0mL/MSVOA_V/WATER
ALS Vial : 27 Sample Multiplier: 1

Instrument :
MSVOA_V
ClientSampleId :
COMJ3

Quant Method : Z:\voasrv\HPCHEM1\MSVOA_V\Method\SFAMVLM041723WMA.M
Quant Title : VOC Analysis

TIC Library : C:\Database\NIST20.L
TIC Integration Parameters: LSCINT.P

No Library Search Compounds Detected

Data Path : Z:\voasrv\HPCHEM1\MSVOA_V\Data\VV041823\
Data File : VV030635.D
Acq On : 18 Apr 2023 22:16
Operator : SY/MD
Sample : 02334-09 200X
Misc : 5.0mL/MSVOA_V/WATER
ALS Vial : 27 Sample Multiplier: 1

Instrument :
MSVOA_V
ClientSampleId :
COMJ3

Quant Method : Z:\voasrv\HPCHEM1\MSVOA_V\Method\SFAMVLM041723WMA.M
Quant Title : VOC Analysis

TIC Library : C:\Database\NIST0.L
TIC Integration Parameters: LSCINT.P

TIC Top Hit name	RT	EstConc	Units	Response	#	RT	Resp	Conc
------------------	----	---------	-------	----------	---	----	------	------
