

Data Path : Z:\VOASRV\HPCHEM1\MSVOA V\DATA\VV042220\
 Data File : VV015646.D
 Acq On : 23 Apr 2020 01:05
 Operator : SY/MD
 Sample : L2370-10
 Misc : 25.0mL/MSVOA V/WATER
 ALS Vial : 33 Sample Multiplier: 1

Instrument :
 MSVOA_V
 ClientSampled :

Quant Time: Apr 23 03:13:26 2020
 Quant Method : Z:\VOASRV\HPCHEM1\MSVOA_V\METHOD\SOMVTR042220WMA.M
 Quant Title : TRACE VOA SOM01.0
 QLast Update : Thu Apr 23 03:05:46 2020
 Response via : Initial Calibration

Internal Standards	R.T.	QIon	Response	Conc	Units	Dev(Min)
1) 1,4-Difluorobenzene	5.64	114	125686	5.00	ug/L	0.00
28) Chlorobenzene-d5	8.87	117	119673	5.00	ug/L	0.00
60) 1,4-Dichlorobenzene-d4	11.27	152	57669	5.00	ug/L	0.00

System Monitoring Compounds

4) Vinyl Chloride-d3	1.31	65	30841	4.70	ug/L	0.00
Spiked Amount	5.000	Range	40 - 130	Recovery	=	94.00%
7) Chloroethane-d5	1.58	69	30739	4.86	ug/L	0.00
Spiked Amount	5.000	Range	65 - 130	Recovery	=	97.20%
11) 1,1-Dichloroethene-d2	2.12	63	49294	3.43	ug/L	0.00
Spiked Amount	5.000	Range	60 - 125	Recovery	=	68.60%
20) 2-Butanone-d5	3.91	46	96512	45.76	ug/L	-0.03
Spiked Amount	50.000	Range	40 - 130	Recovery	=	91.52%
24) Chloroform-d	4.38	84	69810	4.56	ug/L	0.00
Spiked Amount	5.000	Range	70 - 125	Recovery	=	91.20%
26) 1,2-Dichloroethane-d4	5.06	65	41495	4.84	ug/L	0.00
Spiked Amount	5.000	Range	70 - 130	Recovery	=	96.80%
32) Benzene-d6	5.08	84	136614	4.78	ug/L	0.00
Spiked Amount	5.000	Range	70 - 125	Recovery	=	95.60%
36) 1,2-Dichloropropane-d6	6.09	67	43263	4.74	ug/L	0.00
Spiked Amount	5.000	Range	60 - 140	Recovery	=	94.80%
41) Toluene-d8	7.34	98	124926	4.60	ug/L	0.00
Spiked Amount	5.000	Range	70 - 130	Recovery	=	92.00%
43) trans-1,3-Dichloropropene-	7.65	79	11565	3.28	ug/L	0.00
Spiked Amount	5.000	Range	55 - 130	Recovery	=	65.60%
46) 2-Hexanone-d5	8.11	63	74106	43.06	ug/L	0.00
Spiked Amount	50.000	Range	45 - 130	Recovery	=	86.12%
57) 1,1,2,2-Tetrachloroethane-	10.24	84	30451	4.48	ug/L	0.00
Spiked Amount	5.000	Range	65 - 120	Recovery	=	89.60%
64) 1,2-Dichlorobenzene-d4	11.65	152	46981	4.79	ug/L	0.00
Spiked Amount	5.000	Range	80 - 120	Recovery	=	95.80%

Target Compounds

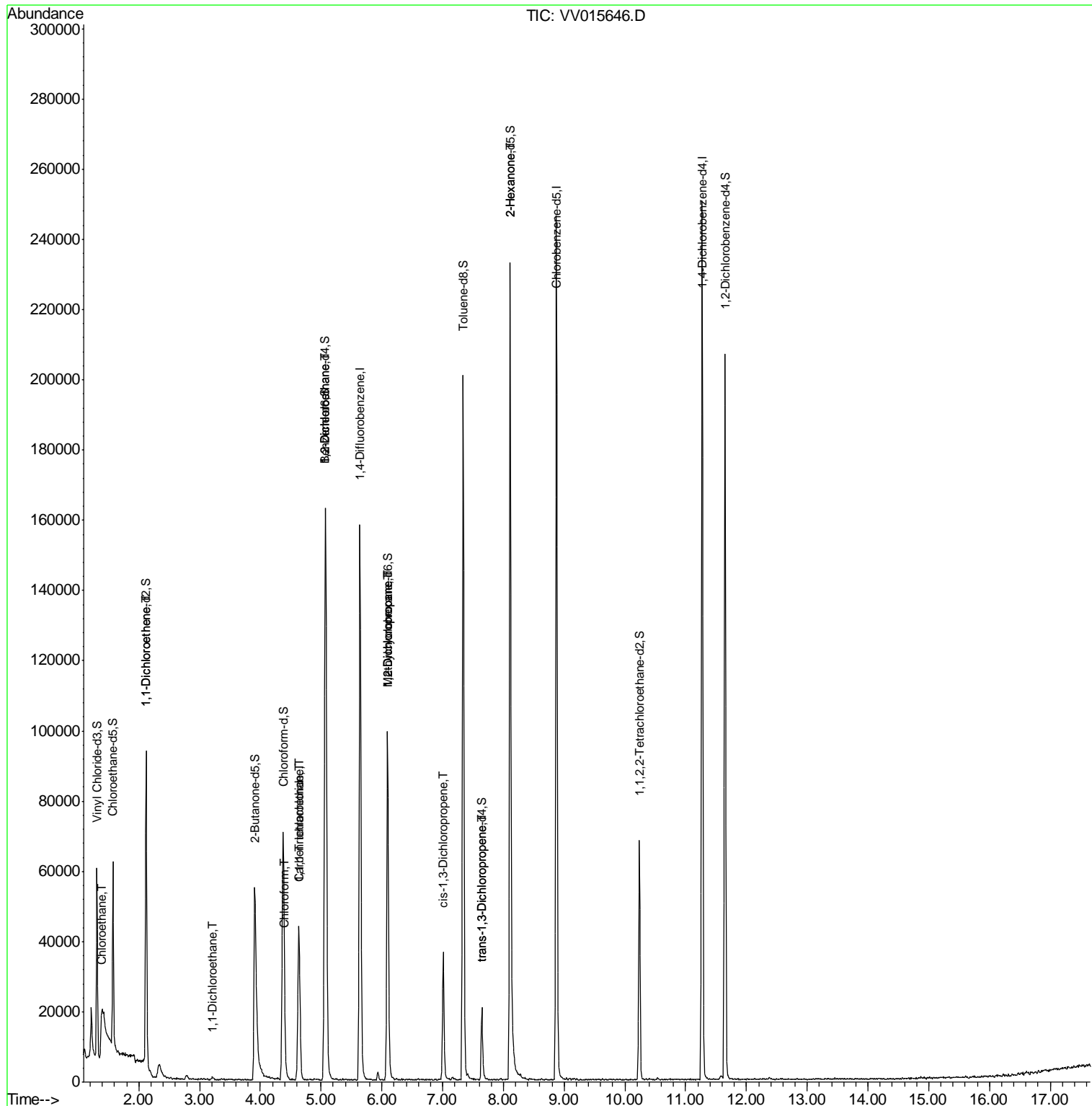
Target Compounds	R.T.	QIon	Response	Conc	Units	Ovalue
8) Chloroethane	1.40	64	53686	8.218	ug/L #	53
12) 1,1-Dichloroethene	2.12	96	589	0.081	ug/L #	1
19) 1,1-Dichloroethane	3.21	63	982	0.061	ug/L #	86
25) Chloroform	4.41	83	2678	0.157	ug/L	90
27) 1,2-Dichloroethane	5.08	62	992	0.088	ug/L #	78
29) 1,1,1-Trichloroethane	4.63	97	34220	2.255	ug/L	99
31) Carbon tetrachloride	4.63	117	3902	0.310	ug/L	88
35) Methylcyclohexane	6.10	83	10699	0.738	ug/L #	15
37) 1,2-Dichloropropane	6.09	63	4966	0.571	ug/L #	86
39) cis-1,3-Dichloropropene	7.01	75	1107	0.091	ug/L	86
44) trans-1,3-Dichloropropene	7.65	75	612	0.060	ug/L #	49
48) 2-Hexanone	8.11	43	10867	2.702	ug/L #	80

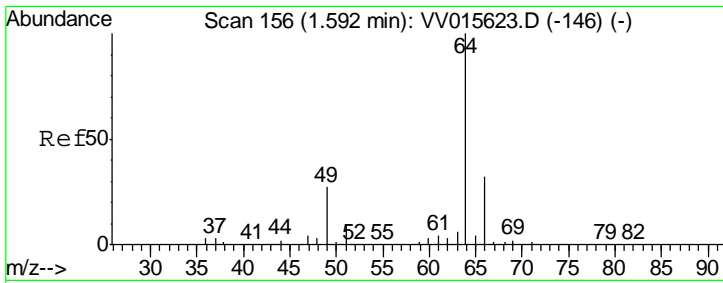
(#) = qualifier out of range (m) = manual integration (+) = signals summed

Data Path : Z:\VOASRV\HPCHEM1\MSVOA V\DATA\VV042220\
 Data File : VV015646.D
 Acq On : 23 Apr 2020 01:05
 Operator : SY/MD
 Sample : L2370-10
 Misc : 25.0mL/MSVOA V/WATER
 ALS Vial : 33 Sample Multiplier: 1

Instrument :
 MSVOA_V
 ClientSampled :

Quant Time: Apr 23 03:13:26 2020
 Quant Method : Z:\VOASRV\HPCHEM1\MSVOA_V\METHOD\SOMVTR042220WMA.M
 Quant Title : TRACE VOA SOM01.0
 QLast Update : Thu Apr 23 03:05:46 2020
 Response via : Initial Calibration

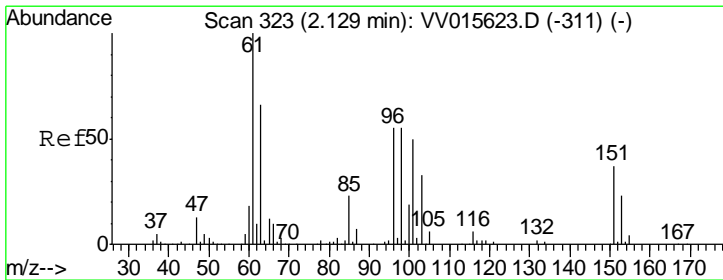
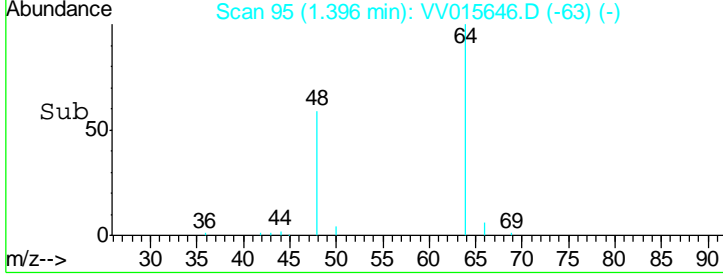
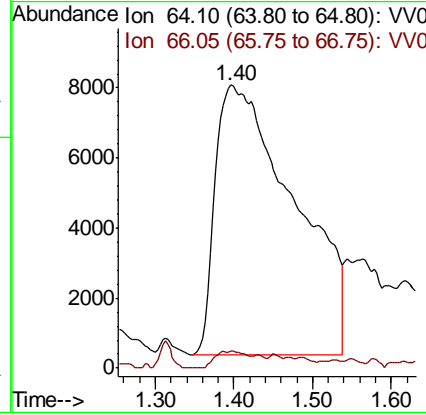
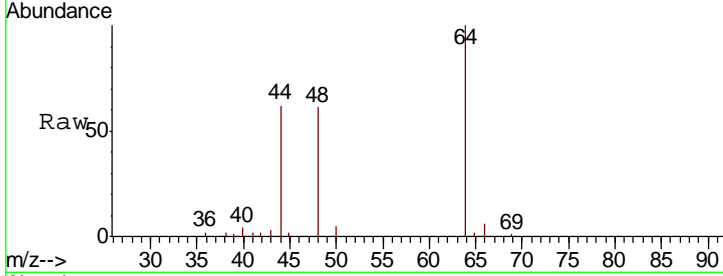




#8
 Chloroethane
 Concen: 8.218 ug/L
 RT: 1.40 min Scan# 95
 Delta R.T. -0.20 min
 Lab File: VV015646.D
 Acq: 23 Apr 2020 01:05

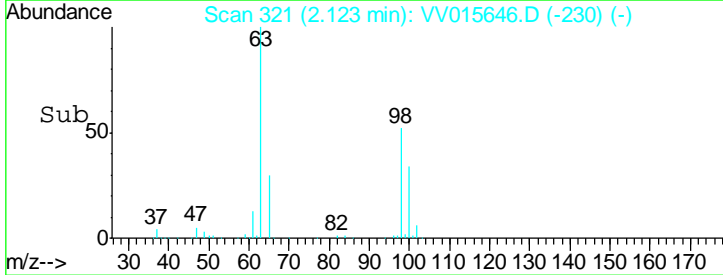
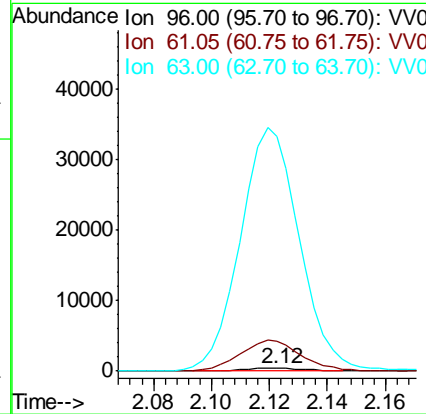
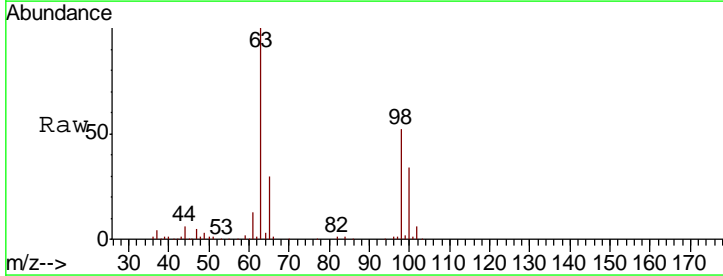
Instrument :
 MSVOA_V
 ClientSampled :

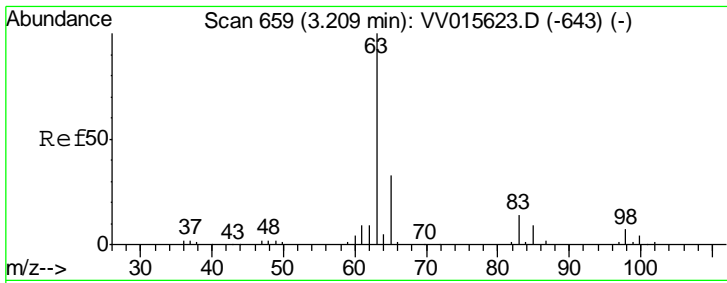
Tgt Ion	Resp	Lower	Upper
64	100		
66	5.9	22.3	41.5#



#12
 1,1-Dichloroethene
 Concen: 0.081 ug/L
 RT: 2.12 min Scan# 321
 Delta R.T. -0.01 min
 Lab File: VV015646.D
 Acq: 23 Apr 2020 01:05

Tgt Ion	Resp	Lower	Upper
96	100		
61	1060.4	130.1	241.7#
63	8182.8	91.4	169.8#

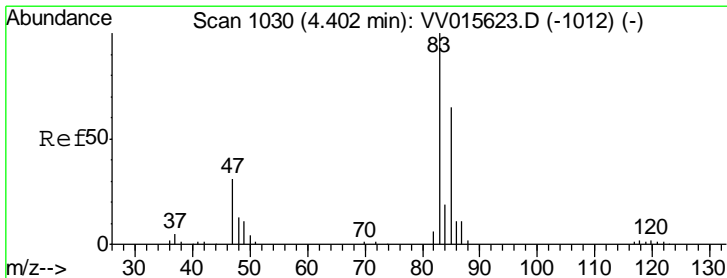
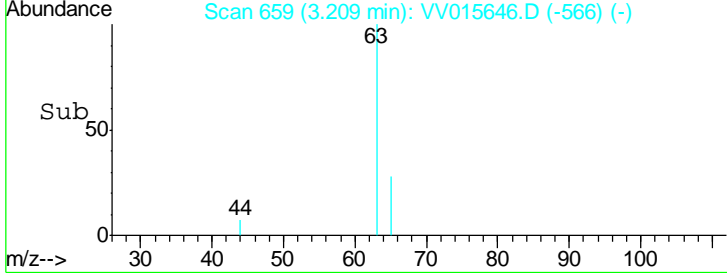
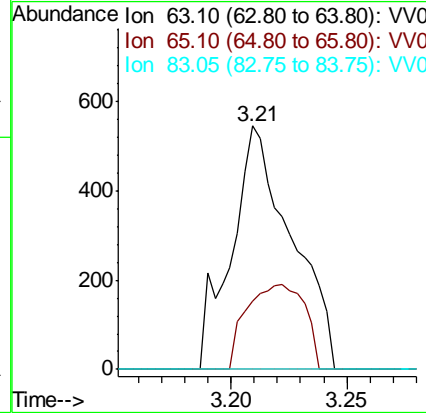
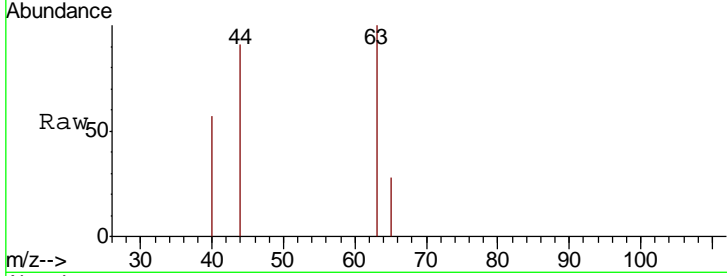




#19
 1,1-Dichloroethane
 Concen: 0.061 ug/L
 RT: 3.21 min Scan# 659
 Delta R.T. 0.00 min
 Lab File: VV015646.D
 Acq: 23 Apr 2020 01:05

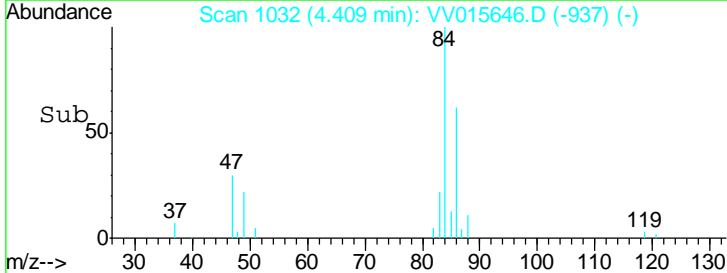
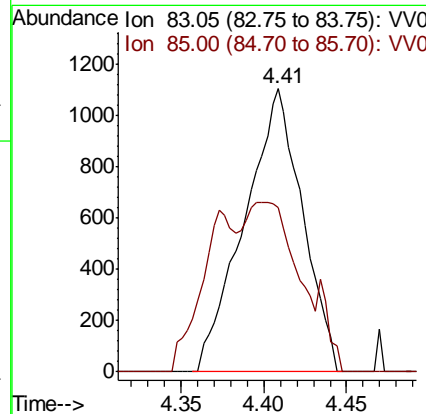
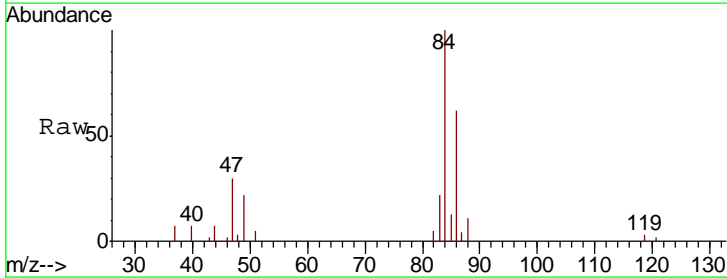
Instrument : MSVOA_V
 ClientSampled :

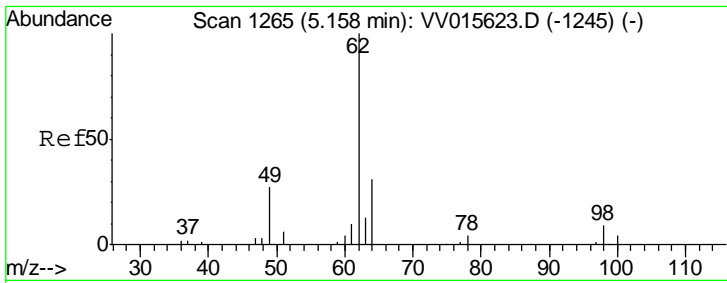
Tgt Ion	Resp	Lower	Upper
63	100		
65	28.3	22.3	41.3
83	0.0	9.3	17.3#



#25
 Chloroform
 Concen: 0.157 ug/L
 RT: 4.41 min Scan# 1032
 Delta R.T. 0.01 min
 Lab File: VV015646.D
 Acq: 23 Apr 2020 01:05

Tgt Ion	Resp	Lower	Upper
83	100		
85	58.0	46.1	85.5

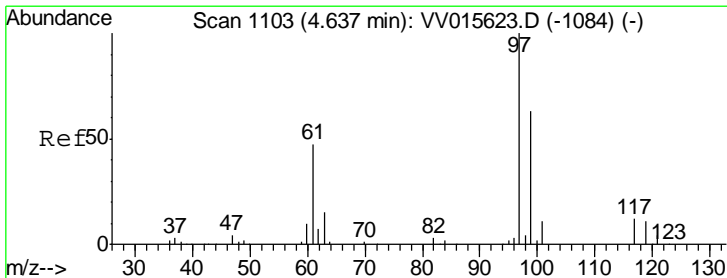
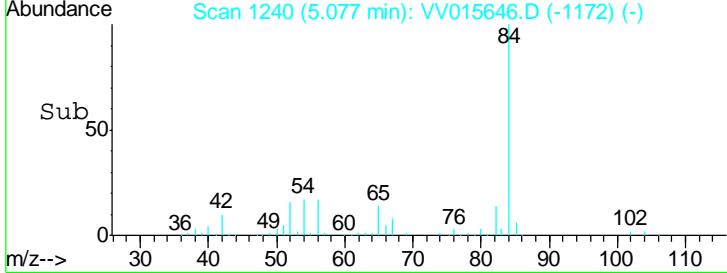
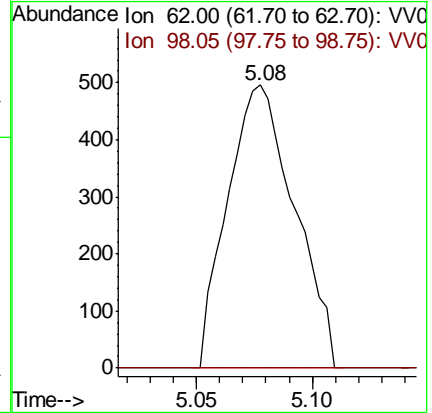
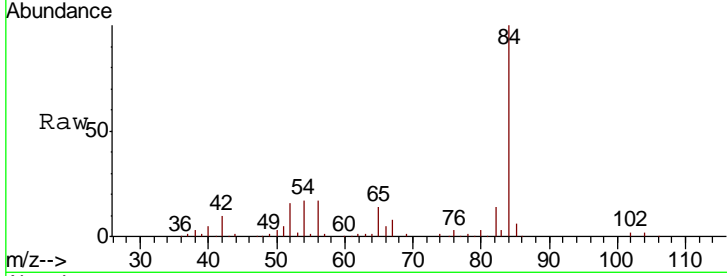




#27
 1,2-Dichloroethane
 Concen: 0.088 ug/L
 RT: 5.08 min Scan# 1240
 Delta R.T. -0.08 min
 Lab File: VV015646.D
 Acq: 23 Apr 2020 01:05

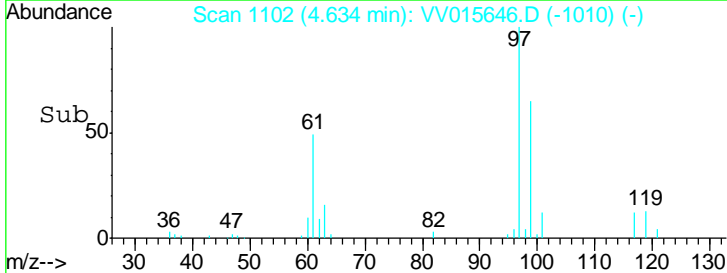
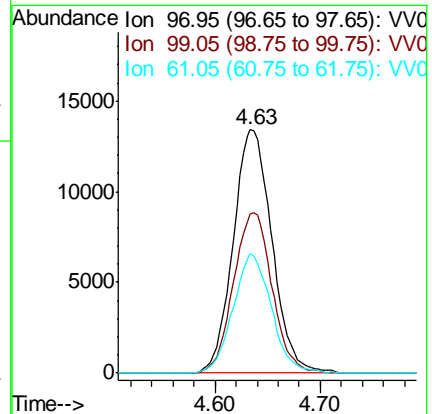
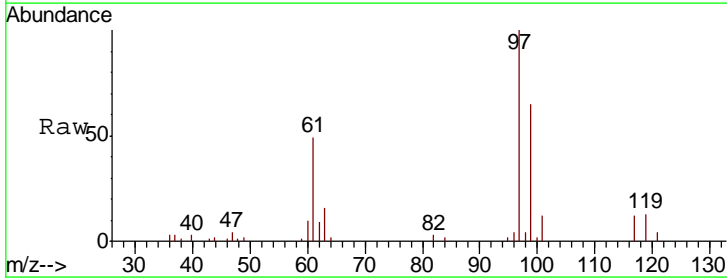
Instrument : MSVOA_V
 ClientSampled :

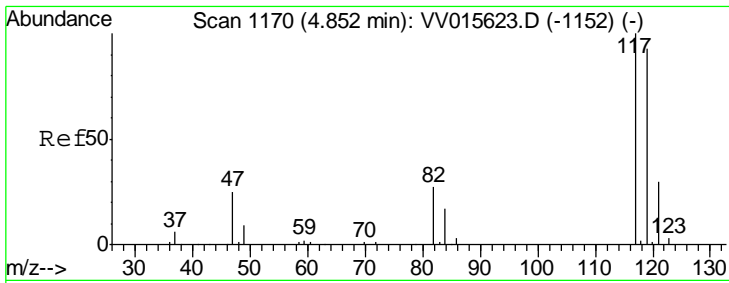
Tgt Ion	Resp	Lower	Upper
62	100		
98	0.0	6.3	9.5#



#29
 1,1,1-Trichloroethane
 Concen: 2.255 ug/L
 RT: 4.63 min Scan# 1102
 Delta R.T. -0.00 min
 Lab File: VV015646.D
 Acq: 23 Apr 2020 01:05

Tgt Ion	Resp	Lower	Upper
97	100		
99	65.4	51.6	77.4
61	48.3	38.6	57.8

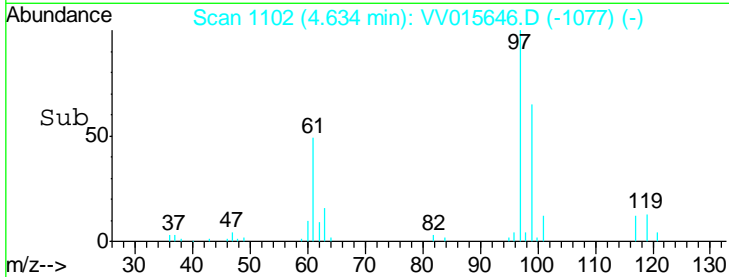
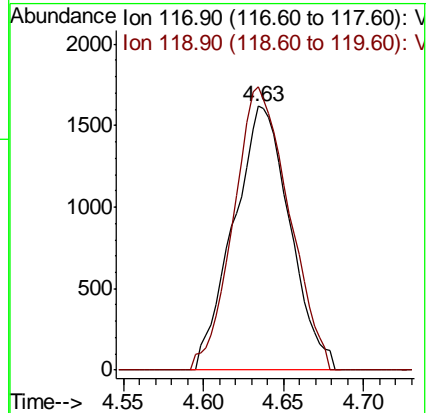
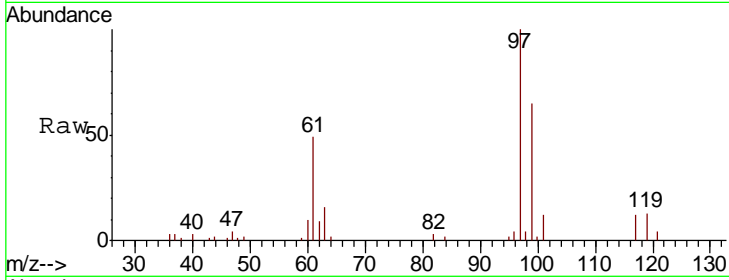




#31
 Carbon tetrachloride
 Concen: 0.310 ug/L
 RT: 4.63 min Scan# 1102
 Delta R.T. -0.22 min
 Lab File: VV015646.D
 Acq: 23 Apr 2020 01:05

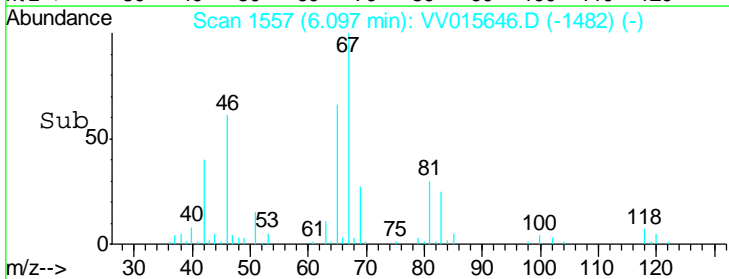
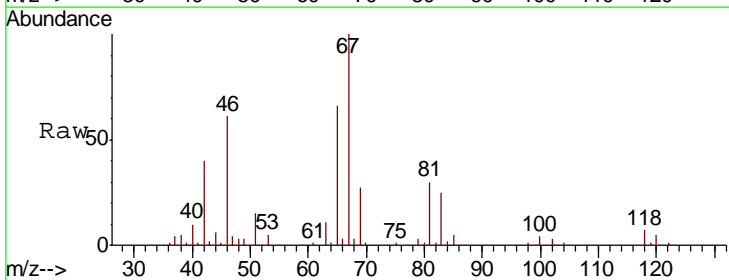
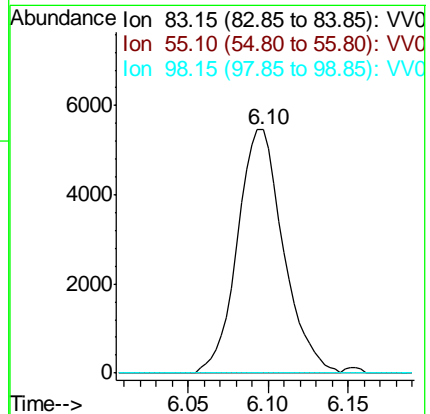
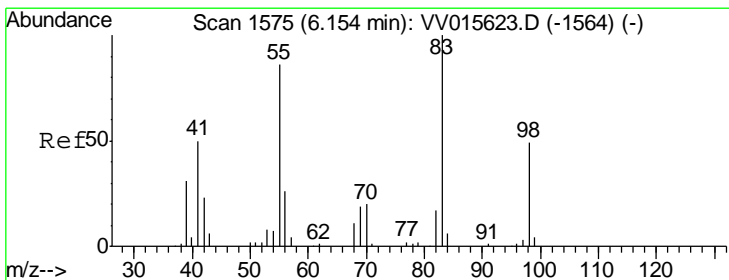
Instrument :
 MSVOA_V
 ClientSampled :

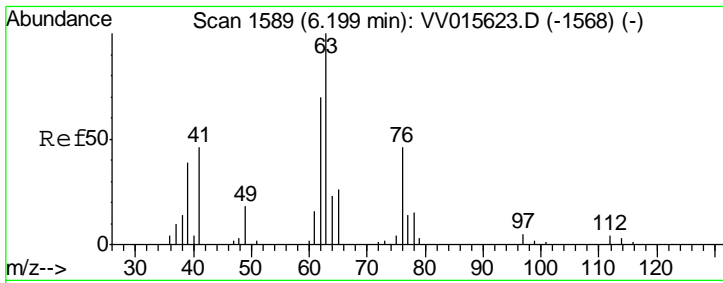
Tgt Ion	Resp	Lower	Upper
117	3902		
119	105.9	75.6	113.4



#35
 Methylcyclohexane
 Concen: 0.738 ug/L
 RT: 6.10 min Scan# 1557
 Delta R.T. -0.06 min
 Lab File: VV015646.D
 Acq: 23 Apr 2020 01:05

Tgt Ion	Resp	Lower	Upper
83	10699		
55	0.0	66.6	99.8#
98	0.5	39.5	59.3#

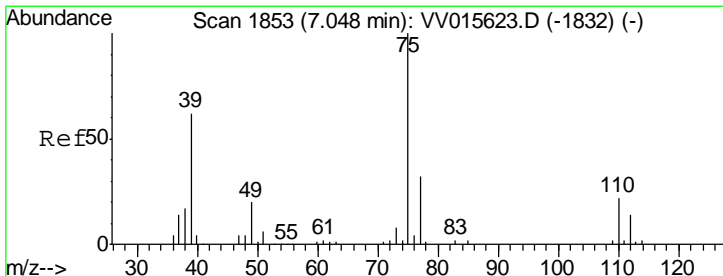
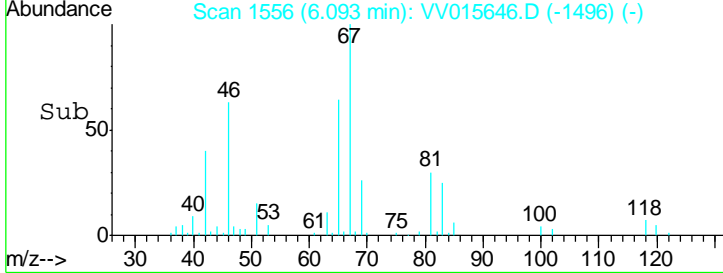
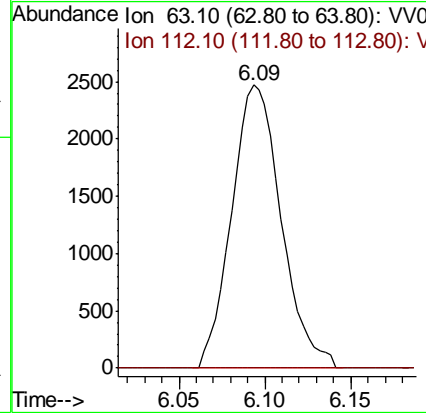
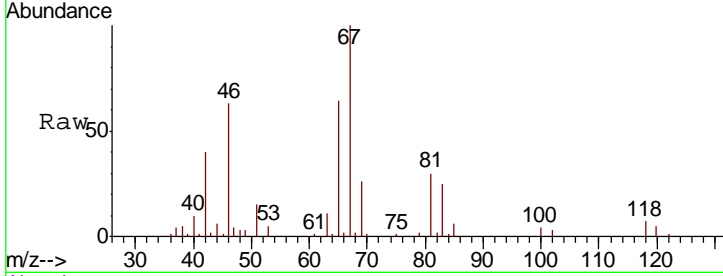




#37
 1,2-Dichloropropane
 Concen: 0.571 ug/L
 RT: 6.09 min Scan# 1556
 Delta R.T. -0.11 min
 Lab File: VV015646.D
 Acq: 23 Apr 2020 01:05

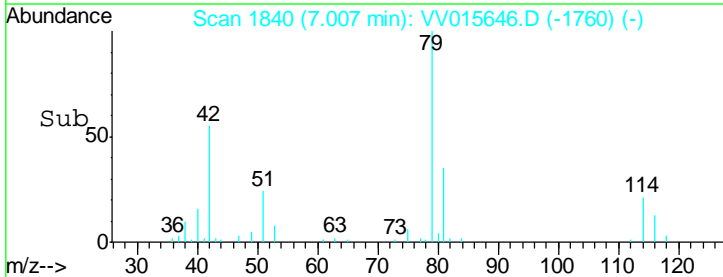
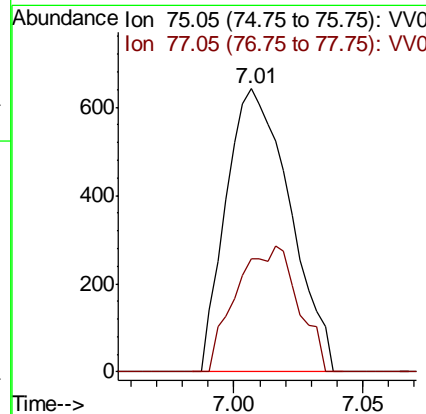
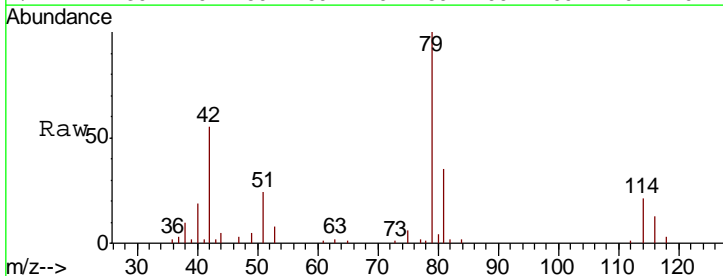
Instrument : MSVOA_V
 ClientSampled :

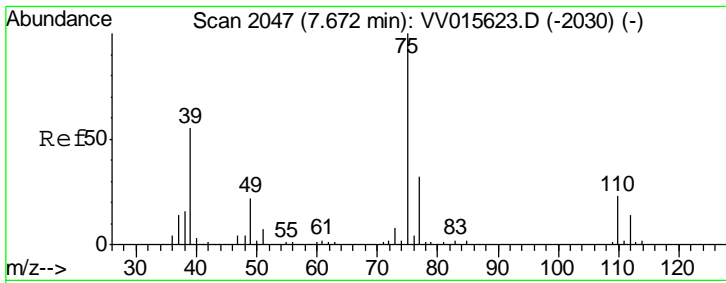
Tgt Ion	Resp	Lower	Upper
63	100		
112	0.0	3.6	5.4#



#39
 cis-1,3-Dichloropropene
 Concen: 0.091 ug/L
 RT: 7.01 min Scan# 1840
 Delta R.T. -0.04 min
 Lab File: VV015646.D
 Acq: 23 Apr 2020 01:05

Tgt Ion	Resp	Lower	Upper
75	100		
77	39.9	22.3	41.5

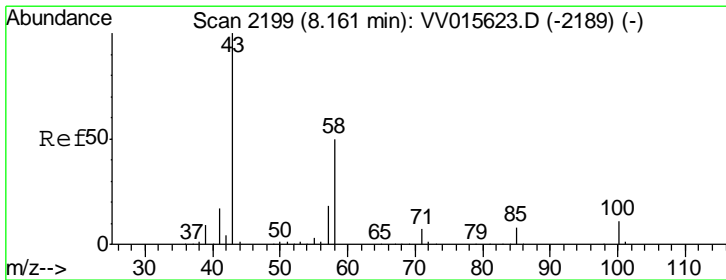
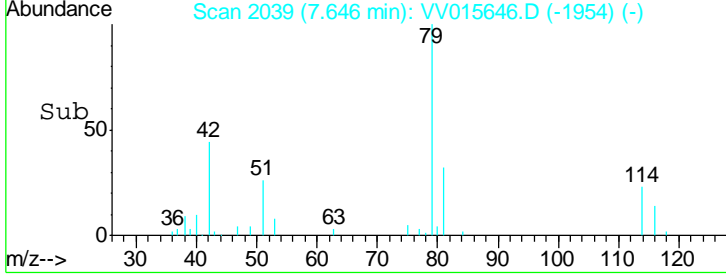
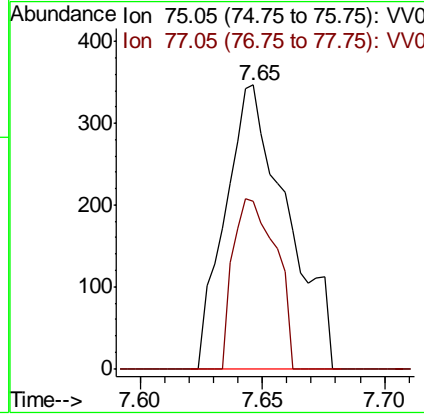
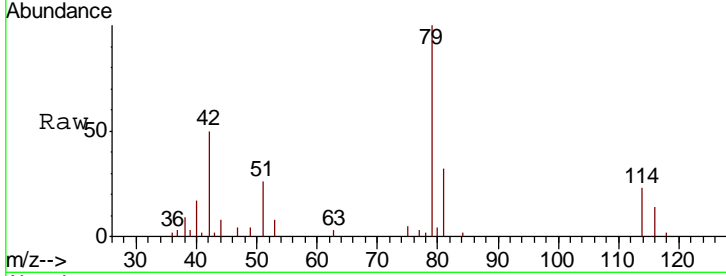




#44
 trans-1,3-Dichloropropene
 Concen: 0.060 ug/L
 RT: 7.65 min Scan# 2039
 Delta R.T. -0.03 min
 Lab File: VV015646.D
 Acq: 23 Apr 2020 01:05

Instrument :
 MSVOA_V
 ClientSampled :

Tgt Ion: 75 Resp: 612
 Ion Ratio Lower Upper
 75 100
 77 59.1 21.8 40.6#



#48
 2-Hexanone
 Concen: 2.702 ug/L
 RT: 8.11 min Scan# 2183
 Delta R.T. -0.05 min
 Lab File: VV015646.D
 Acq: 23 Apr 2020 01:05

Tgt Ion: 43 Resp: 10867
 Ion Ratio Lower Upper
 43 100
 58 36.7 41.1 61.7#
 57 24.1 15.0 22.4#
 100 0.0 9.0 13.4#

