

Data Path : Z:\voasrv\HPCHEM1\MSVOA_V\Data\VV042221\
 Data File : VV021104.D
 Acq On : 22 Apr 2021 19:12
 Operator : SY/MD
 Sample : M2065-17ME
 Misc : 3.41g/5.0mL/100uL/5.0mL/MSVOA_V/MEOH
 ALS Vial : 19 Sample Multiplier: 1

Instrument :
 MSVOA_V
 ClientSampleId :
 BG570ME

Integration Parameters: LSCINT.P

Integrator: RTE
 Smoothing : OFF Filtering: 5
 Sampling : 1 Min Area: 0 % of largest Peak
 Start Thrs: 0.2 Max Peaks: 100
 Stop Thrs : 0 Peak Location: TOP

If leading or trailing edge < 100 prefer < Baseline drop else tangent >
 Peak separation: 5

Method : Z:\voasrv\HPCHEM1\MSVOA_V\Method\SFAMVLM042121WMA.M
 Title : VOC Analysis

Signal : TIC: VV021104.D\data.ms

peak #	R.T. min	first scan	max scan	last scan	PK TY	peak height	corr. area	corr. % max.	% of total
1	1.307	76	83	96	rBV	327520	353774	14.58%	1.884%
2	1.568	157	164	176	rVB	279613	321310	13.24%	1.711%
3	2.105	321	331	344	rBV	635608	903690	37.24%	4.813%
4	2.278	383	385	387	rBV2	1783	950	0.04%	0.005%
5	2.413	424	427	429	rBV3	996	607	0.03%	0.003%
6	2.507	448	456	463	rBV9	2916	4447	0.18%	0.024%
7	2.616	487	490	495	rBV4	1592	1809	0.07%	0.010%
8	2.790	538	544	545	rBV5	777	687	0.03%	0.004%
9	2.822	552	554	560	rVB3	795	703	0.03%	0.004%
10	2.912	575	582	586	rBV3	1089	1009	0.04%	0.005%
11	2.989	602	606	608	rBV2	985	568	0.02%	0.003%
12	3.140	651	653	661	rVB3	866	765	0.03%	0.004%
13	3.175	661	664	668	rBV2	831	668	0.03%	0.004%
14	3.487	756	761	763	rVB3	713	591	0.02%	0.003%
15	3.670	814	818	824	rBV5	647	865	0.04%	0.005%
16	3.738	837	839	845	rBV2	588	559	0.02%	0.003%
17	3.915	883	894	896	rBV	87488	134814	5.56%	0.718%
18	4.352	1012	1030	1061	rVV	406694	1031596	42.51%	5.495%
19	4.478	1065	1069	1075	rVB6	2111	1963	0.08%	0.010%
20	4.577	1094	1100	1102	rBV6	1125	1155	0.05%	0.006%
21	4.658	1124	1125	1133	rVB4	878	604	0.02%	0.003%
22	4.847	1177	1184	1186	rBV4	682	873	0.04%	0.005%
23	4.973	1219	1223	1228	rBV5	1071	1057	0.04%	0.006%
24	5.047	1228	1246	1275	rBV3	958711	2426742	100.00%	12.926%
25	5.259	1310	1312	1314	rBV2	981	655	0.03%	0.003%
26	5.297	1321	1324	1326	rVB3	1094	635	0.03%	0.003%
27	5.352	1338	1341	1346	rBV3	577	565	0.02%	0.003%
28	5.577	1408	1411	1412	rBV2	1013	563	0.02%	0.003%
29	5.619	1412	1424	1453	rBV	775967	1550344	63.89%	8.258%
30	5.873	1496	1503	1505	rBV4	899	972	0.04%	0.005%
31	5.912	1505	1515	1518	rBV5	9496	13911	0.57%	0.074%
32	5.989	1533	1539	1543	rBV5	1432	1883	0.08%	0.010%
33	6.072	1552	1565	1591	rBV2	529755	1081792	44.58%	5.762%
34	6.326	1641	1644	1647	rVB4	886	605	0.02%	0.003%
35	6.378	1657	1660	1662	rBV2	984	655	0.03%	0.003%
36	6.391	1662	1664	1667	rVV4	901	558	0.02%	0.003%

Data Path : Z:\voasrv\HPCHEM1\MSVOA_V\Data\VV042221\
 Data File : VV021104.D
 Acq On : 22 Apr 2021 19:12
 Operator : SY/MD
 Sample : M2065-17ME
 Misc : 3.41g/5.0mL/100uL/5.0mL/MSVOA_V/MEOH
 ALS Vial : 19 Sample Multiplier: 1

Instrument :
 MSVOA_V
 ClientSampleId :
 BG570ME

Integration Parameters: LSCINT.P

Integrator: RTE
 Smoothing : OFF Filtering: 5
 Sampling : 1 Min Area: 0 % of largest Peak
 Start Thrs: 0.2 Max Peaks: 100
 Stop Thrs : 0 Peak Location: TOP

If leading or trailing edge < 100 prefer < Baseline drop else tangent >
 Peak separation: 5

Method : Z:\voasrv\HPCHEM1\MSVOA_V\Method\SFAMVLM042121WMA.M
 Title : VOC Analysis

37	6.410	1667	1670	1674	rVB4	944	673	0.03%	0.004%
38	6.555	1710	1715	1719	rBV4	948	1028	0.04%	0.005%
39	6.645	1741	1743	1747	rVV3	924	565	0.02%	0.003%
40	6.670	1747	1751	1756	rVV5	1007	773	0.03%	0.004%
41	6.703	1756	1761	1766	rBV3	989	766	0.03%	0.004%
42	6.780	1782	1785	1788	rBV3	1108	682	0.03%	0.004%
43	6.908	1822	1825	1829	rVB3	1199	590	0.02%	0.003%
44	6.989	1839	1850	1872	rBV2	291130	539566	22.23%	2.874%
45	7.198	1910	1915	1917	rBV3	828	778	0.03%	0.004%
46	7.256	1930	1933	1935	rBV3	1034	581	0.02%	0.003%
47	7.320	1939	1953	1971	rBV	1100539	1937138	79.82%	10.318%
48	7.551	2022	2025	2028	rBV4	859	689	0.03%	0.004%
49	7.625	2036	2048	2071	rBV	208700	373970	15.41%	1.992%
50	7.735	2079	2082	2088	rVB6	1296	918	0.04%	0.005%
51	7.857	2118	2120	2126	rVB4	1906	1240	0.05%	0.007%
52	7.918	2135	2139	2141	rVB2	765	558	0.02%	0.003%
53	7.934	2141	2144	2146	rBV2	1530	1039	0.04%	0.006%
54	8.047	2173	2179	2182	rBV4	840	718	0.03%	0.004%
55	8.095	2184	2194	2228	rBV2	533065	1023231	42.16%	5.450%
56	8.265	2245	2247	2250	rBV4	1160	584	0.02%	0.003%
57	8.307	2258	2260	2263	rVB2	1399	701	0.03%	0.004%
58	8.397	2282	2288	2291	rBV5	1171	1276	0.05%	0.007%
59	8.423	2291	2296	2304	rBV9	2135	3231	0.13%	0.017%
60	8.596	2348	2350	2354	rVB4	1124	712	0.03%	0.004%
61	8.741	2393	2395	2402	rVB5	702	593	0.02%	0.003%
62	8.857	2418	2431	2455	rBV	1168435	1906998	78.58%	10.158%
63	9.079	2494	2500	2502	rBV7	1206	1078	0.04%	0.006%
64	9.149	2516	2522	2524	rBV4	2310	2262	0.09%	0.012%
65	9.162	2524	2526	2534	rVB6	2967	2457	0.10%	0.013%
66	9.291	2563	2566	2569	rBV3	759	729	0.03%	0.004%
67	9.352	2581	2585	2591	rVB4	901	923	0.04%	0.005%
68	9.384	2591	2595	2597	rBV2	967	655	0.03%	0.003%
69	9.410	2601	2603	2606	rVB2	1209	665	0.03%	0.004%
70	9.429	2606	2609	2610	rBV2	1110	662	0.03%	0.004%
71	9.574	2651	2654	2656	rBV3	1389	934	0.04%	0.005%
72	9.683	2680	2688	2690	rBV6	1531	2032	0.08%	0.011%
73	9.911	2754	2759	2762	rBV6	1174	1160	0.05%	0.006%
74	9.940	2766	2768	2773	rVB2	1073	765	0.03%	0.004%
75	10.075	2807	2810	2814	rBV3	929	749	0.03%	0.004%
76	10.133	2820	2828	2836	rVB7	9447	14690	0.61%	0.078%

Data Path : Z:\voasrv\HPCHEM1\MSVOA_V\Data\VV042221\
 Data File : VV021104.D
 Acq On : 22 Apr 2021 19:12
 Operator : SY/MD
 Sample : M2065-17ME
 Misc : 3.41g/5.0mL/100uL/5.0mL/MSVOA_V/MEOH
 ALS Vial : 19 Sample Multiplier: 1

Instrument :
 MSVOA_V
 ClientSampleId :
 BG570ME

Integration Parameters: LSCINT.P

Integrator: RTE
 Smoothing : OFF Filtering: 5
 Sampling : 1 Min Area: 0 % of largest Peak
 Start Thrs: 0.2 Max Peaks: 100
 Stop Thrs : 0 Peak Location: TOP

If leading or trailing edge < 100 prefer < Baseline drop else tangent >
 Peak separation: 5

Method : Z:\voasrv\HPCHEM1\MSVOA_V\Method\SFAMVLM042121WMA.M
 Title : VOC Analysis

77	10.220	2839	2855	2875	rBV	780577	1256190	51.76%	6.691%
78	10.381	2902	2905	2907	rBV4	1652	1226	0.05%	0.007%
79	10.455	2925	2928	2932	rVV6	1646	1344	0.06%	0.007%
80	10.548	2954	2957	2959	rBV3	1732	1136	0.05%	0.006%
81	10.580	2960	2967	2973	rVV3	4524	7497	0.31%	0.040%
82	10.670	2989	2995	2997	rBV6	2587	2523	0.10%	0.013%
83	10.763	3020	3024	3025	rBV3	2273	1475	0.06%	0.008%
84	10.886	3058	3062	3064	rBV5	2022	1864	0.08%	0.010%
85	10.924	3065	3074	3081	rVV8	9755	18024	0.74%	0.096%
86	11.040	3102	3110	3116	rVV7	6201	10141	0.42%	0.054%
87	11.153	3139	3145	3153	rVB7	10770	14117	0.58%	0.075%
88	11.201	3153	3160	3166	rBV10	6027	8477	0.35%	0.045%
89	11.255	3166	3177	3194	rBV	1208958	1847802	76.14%	9.842%
90	11.394	3213	3220	3226	rBV7	7647	11106	0.46%	0.059%
91	11.509	3254	3256	3259	rBV4	1160	609	0.03%	0.003%
92	11.632	3282	3294	3317	rBV	1192670	1882292	77.56%	10.026%
93	12.034	3416	3419	3422	rBV4	1695	1282	0.05%	0.007%
94	12.201	3468	3471	3480	rVB9	3988	4455	0.18%	0.024%
95	12.252	3482	3487	3488	rBV5	4184	3482	0.14%	0.019%
96	12.480	3549	3558	3568	rBV5	5528	11025	0.45%	0.059%
97	12.731	3633	3636	3639	rBV5	2545	1672	0.07%	0.009%
98	13.268	3800	3803	3804	rBV3	2457	1335	0.06%	0.007%
99	13.619	3910	3912	3913	rBV2	1835	797	0.03%	0.004%
100	14.786	4269	4275	4285	rBV2	5424	9965	0.41%	0.053%

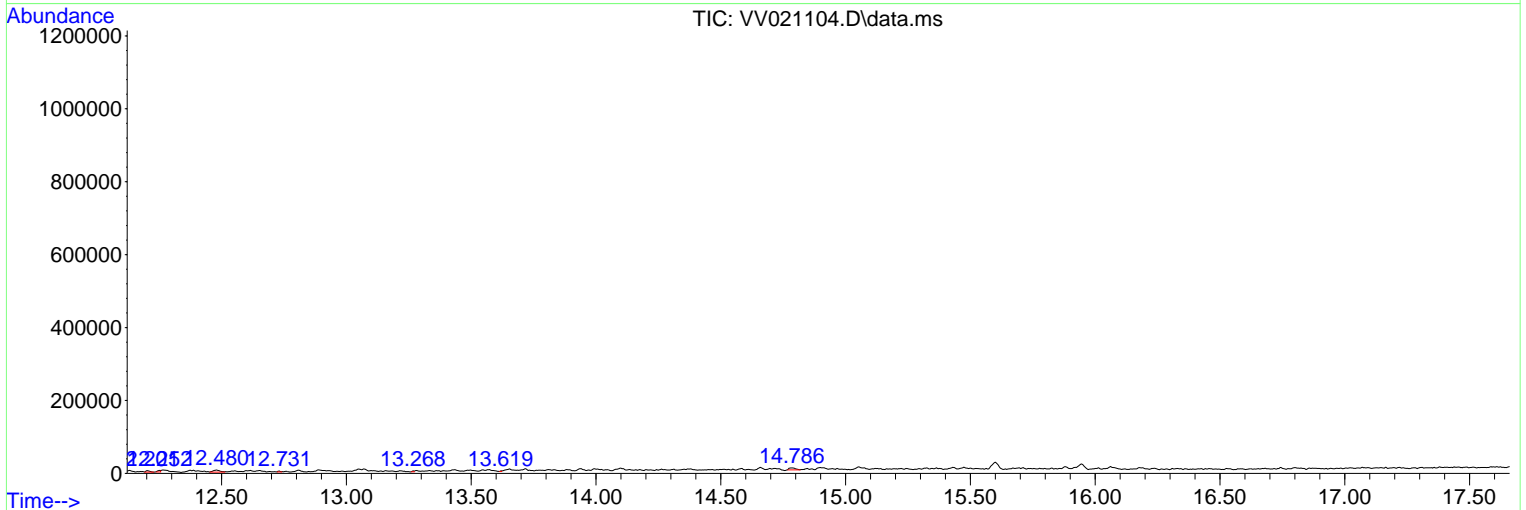
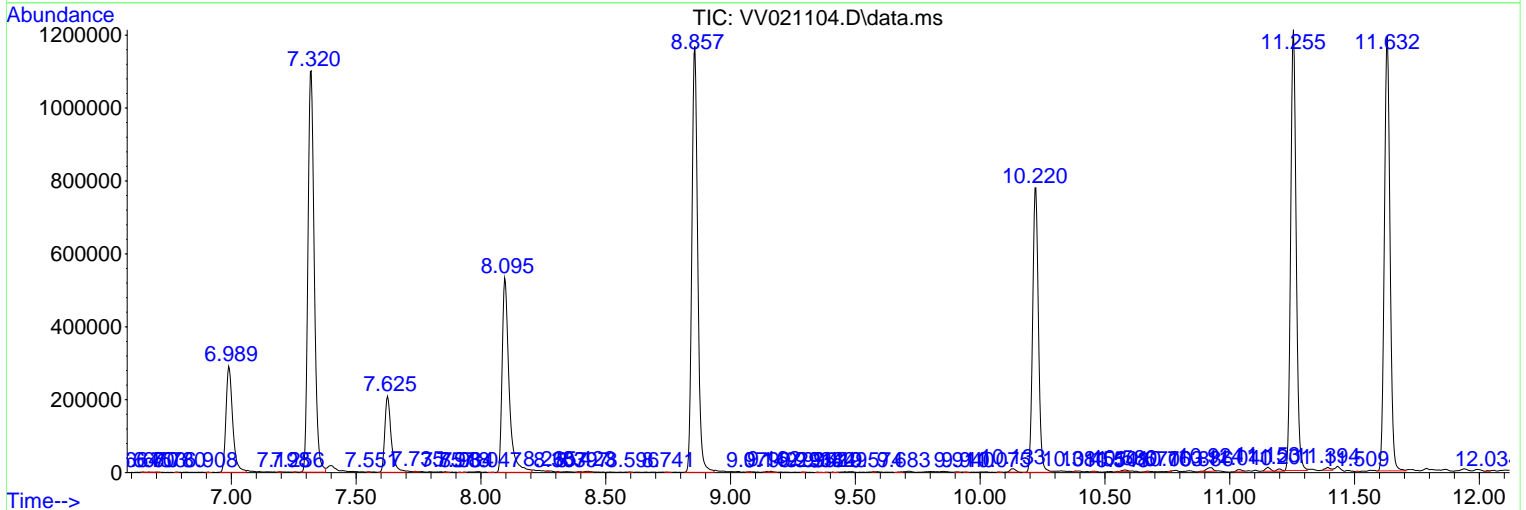
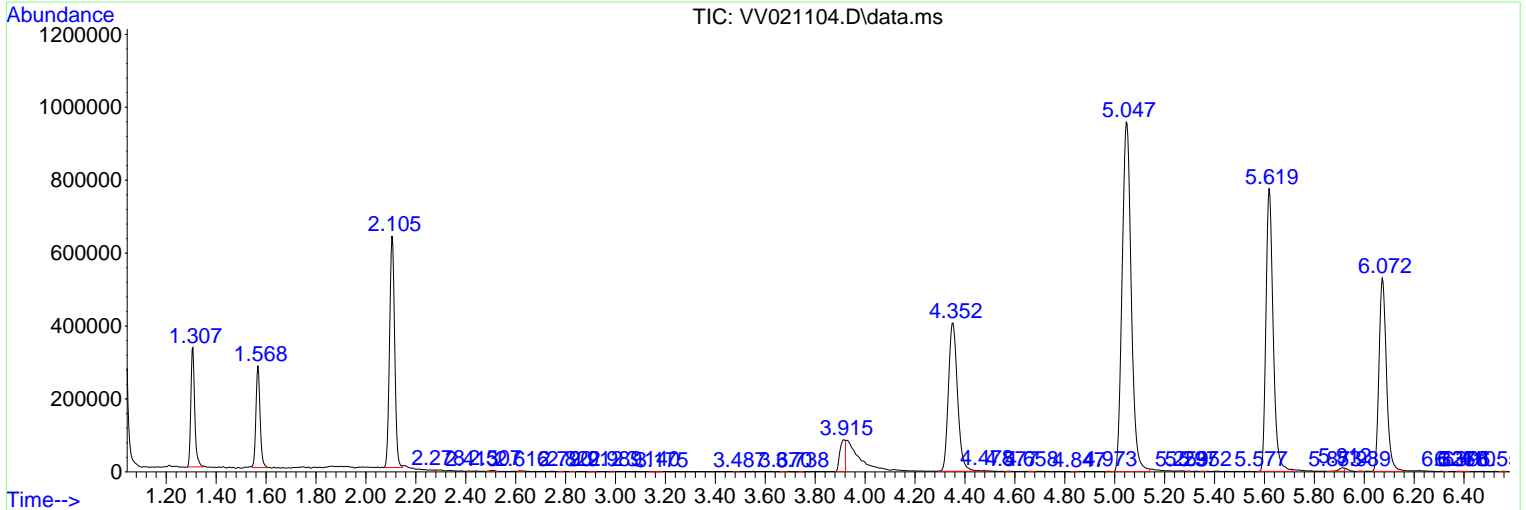
Sum of corrected areas: 18774139

Data Path : Z:\voasrv\HPCHEM1\MSVOA_V\Data\VV042221\
 Data File : VV021104.D
 Acq On : 22 Apr 2021 19:12
 Operator : SY/MD
 Sample : M2065-17ME
 Misc : 3.41g/5.0mL/100uL/5.0mL/MSVOA_V/MEOH
 ALS Vial : 19 Sample Multiplier: 1

Instrument :
 MSVOA_V
 ClientSampled :
 BG570ME

Quant Method : Z:\voasrv\HPCHEM1\MSVOA_V\Method\SFAMVLM042121WMA.M
 Quant Title : VOC Analysis

TIC Library : C:\DATABASE\NIST11.L
 TIC Integration Parameters: LSCINT.P



Data Path : Z:\voasrv\HPCHEM1\MSVOA_V\Data\VV042221\
Data File : VV021104.D
Acq On : 22 Apr 2021 19:12
Operator : SY/MD
Sample : M2065-17ME
Misc : 3.41g/5.0mL/100uL/5.0mL/MSVOA_V/MEOH
ALS Vial : 19 Sample Multiplier: 1

Instrument :
MSVOA_V
ClientSampleId :
BG570ME

Quant Method : Z:\voasrv\HPCHEM1\MSVOA_V\Method\SFAMVLM042121WMA.M
Quant Title : VOC Analysis

TIC Library : C:\DATABASE\NIST11.L
TIC Integration Parameters: LSCINT.P

No Library Search Compounds Detected

Data Path : Z:\voasrv\HPCHEM1\MSVOA_V\Data\VV042221\
Data File : VV021104.D
Acq On : 22 Apr 2021 19:12
Operator : SY/MD
Sample : M2065-17ME
Misc : 3.41g/5.0mL/100uL/5.0mL/MSVOA_V/MEOH
ALS Vial : 19 Sample Multiplier: 1

Instrument :
MSVOA_V
ClientSampleId :
BG570ME

Quant Method : Z:\voasrv\HPCHEM1\MSVOA_V\Method\SFAMVLM042121WMA.M
Quant Title : VOC Analysis

TIC Library : C:\DATABASE\NIST11.L
TIC Integration Parameters: LSCINT.P

TIC Top Hit name	RT	EstConc	Units	Response	--Internal Standard--			
					#	RT	Resp	Conc
