

Data Path : Z:\voasrv\HPCHEM1\MSVOA_V\Data\VW042224\
 Data File : VW035327.D
 Acq On : 22 Apr 2024 12:57
 Operator : SY/MD
 Sample : P2182-10 100X
 Misc : 5.0mL/MSVOA_V/WATER
 ALS Vial : 8 Sample Multiplier: 1

Instrument :
 MSVOA_V
ClientSampleId :

Quant Time: Apr 23 00:29:34 2024
 Quant Method : Z:\voasrv\HPCHEM1\MSVOA_V\Method\SFAMVLM032624WMA.M
 Quant Title : VOC Analysis
 QLast Update : Tue Apr 23 00:28:07 2024
 Response via : Initial Calibration

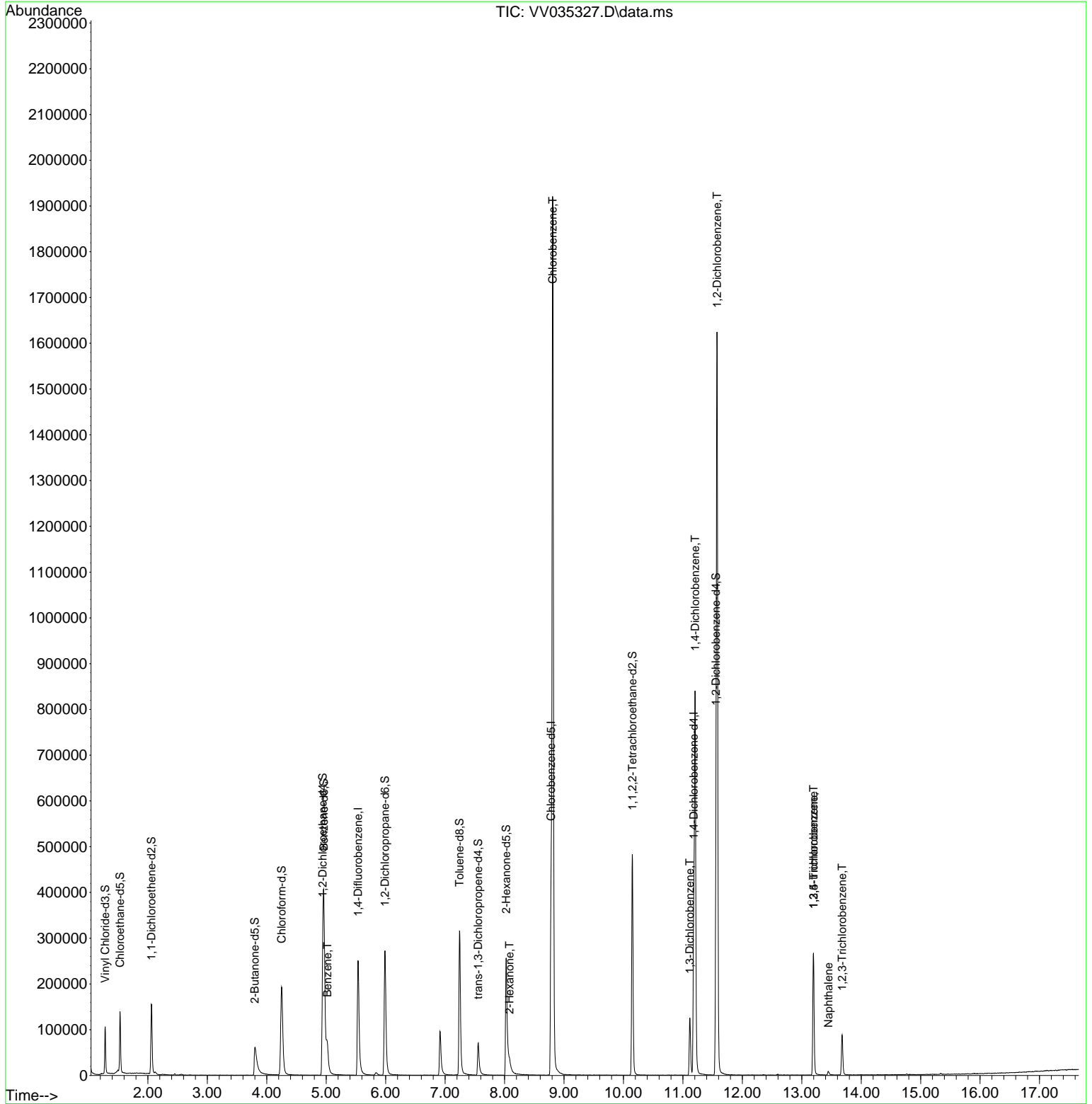
Compound	R. T.	QI on	Response	Conc	Units	Dev(Min)
Internal Standards						
1) 1,4-Difluorobenzene	5.535	114	228417	50.000	ug/L	0.00
28) Chlorobenzene-d5	8.783	117	213465	50.000	ug/L	0.00
58) 1,4-Dichlorobenzene-d4	11.185	152	88247	50.000	ug/L	0.00
System Monitoring Compounds						
4) Vinyl Chloride-d3	1.281	65	67834	30.751	ug/L	0.00
Spike Amount	50.000	Range	60 - 135	Recovery	=	61.500%
7) Chloroethane-d5	1.532	69	80585	42.059	ug/L	0.00
Spike Amount	50.000	Range	70 - 130	Recovery	=	84.120%
11) 1,1-Dichloroethene-d2	2.060	65	27213	28.142	ug/L	0.00
Spike Amount	50.000	Range	60 - 125	Recovery	=	56.280%#
21) 2-Butanone-d5	3.799	46	92903	71.010	ug/L	0.01
Spike Amount	100.000	Range	40 - 130	Recovery	=	71.010%
24) Chloroform-d	4.249	84	209511	56.489	ug/L	0.00
Spike Amount	50.000	Range	70 - 125	Recovery	=	112.980%
26) 1,2-Dichloroethane-d4	4.941	65	156063	66.275	ug/L	0.00
Spike Amount	50.000	Range	70 - 125	Recovery	=	132.560%#
32) Benzene-d6	4.960	84	339169	47.301	ug/L	0.00
Spike Amount	50.000	Range	70 - 125	Recovery	=	94.600%
36) 1,2-Dichloropropane-d6	5.989	67	139306	61.181	ug/L	0.00
Spike Amount	50.000	Range	70 - 120	Recovery	=	122.360%#
41) Toluene-d8	7.243	98	226590	35.089	ug/L	0.00
Spike Amount	50.000	Range	80 - 120	Recovery	=	70.180%#
43) trans-1,3-Dichloropropene	7.558	79	46446	41.959	ug/L	0.00
Spike Amount	50.000	Range	60 - 125	Recovery	=	83.920%
47) 2-Hexanone-d5	8.027	63	86566	100.556	ug/L	0.00
Spike Amount	100.000	Range	45 - 130	Recovery	=	100.560%
56) 1,1,2,2-Tetrachloroethane	10.149	84	240125	76.582	ug/L	0.00
Spike Amount	50.000	Range	65 - 120	Recovery	=	153.160%#
66) 1,2-Dichlorobenzene-d4	11.558	152	104010	52.495	ug/L	0.00
Spike Amount	50.000	Range	80 - 120	Recovery	=	104.980%
Target Compounds						
33) Benzene	5.018	78	78687	11.304	ug/L	100
48) 2-Hexanone	8.085	43	17056	8.165	ug/L #	85
51) Chlorobenzene	8.812	112	1032852	218.678	ug/L	99
64) 1,3-Dichlorobenzene	11.117	146	53031	17.837	ug/L	98
65) 1,4-Dichlorobenzene	11.207	146	333233	110.220	ug/L	99
67) 1,2-Dichlorobenzene	11.577	146	616338	208.105	ug/L	98
69) 1,3,5-Trichlorobenzene	13.197	180	83156	38.809	ug/L	97
70) 1,2,4-trichlorobenzene	13.197	180	83156	42.250	ug/L	97
71) Naphthalene	13.448	128	7861	1.440	ug/L #	95
72) 1,2,3-Trichlorobenzene	13.680	180	28986	14.941	ug/L	99

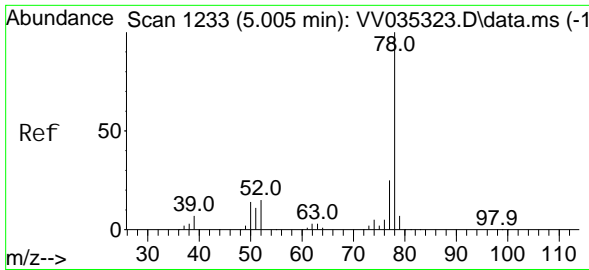
(#) = qualifier out of range (m) = manual integration (+) = signals summed

Data Path : Z:\voasrv\HPCHEM1\MSVOA_V\Data\VV042224\
 Data File : VV035327.D
 Acq On : 22 Apr 2024 12:57
 Operator : SY/MD
 Sample : P2182-10 100X
 Misc : 5.0mL/MSVOA_V/WATER
 ALS Vial : 8 Sample Multiplier: 1

Instrument :
 MSVOA_V
 ClientSampleId :

Quant Time: Apr 23 00:29:34 2024
 Quant Method : Z:\voasrv\HPCHEM1\MSVOA_V\Method\SFAMVLM032624WMA.M
 Quant Title : VOC Analysis
 QLast Update : Tue Apr 23 00:28:07 2024
 Response via : Initial Calibration

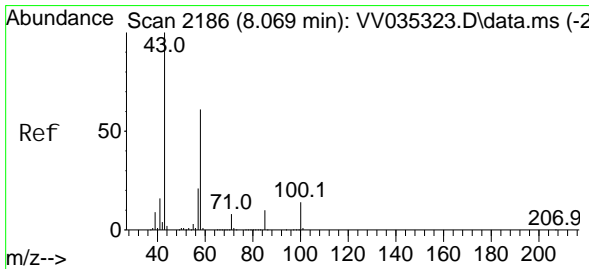
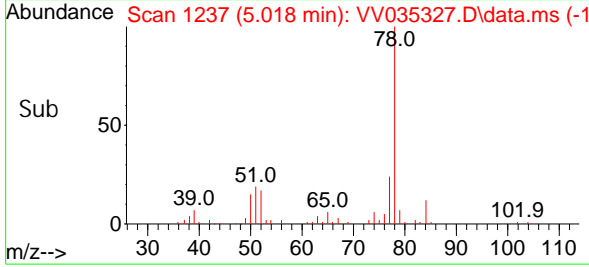
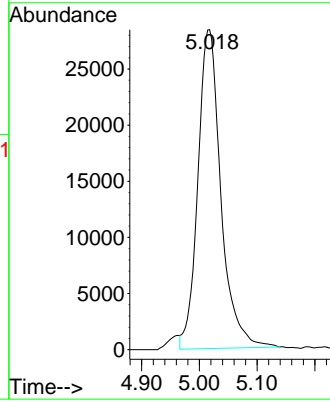
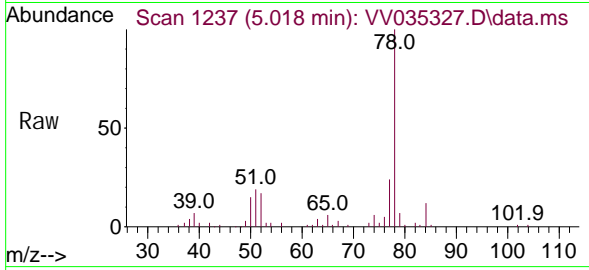




#33
 Benzene
 Concen: 11.304 ug/L
 RT: 5.018 min Scan# 11
 Delta R.T. 0.013 min
 Lab File: VV035327.D
 Acq: 22 Apr 2024 12:57

Tgt Ion: 78 Resp: 78687

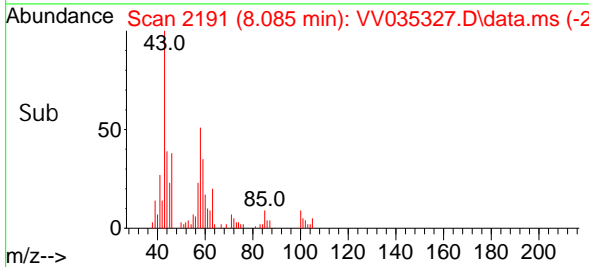
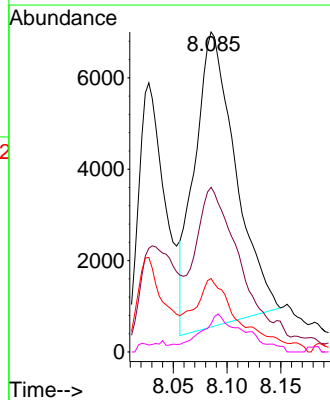
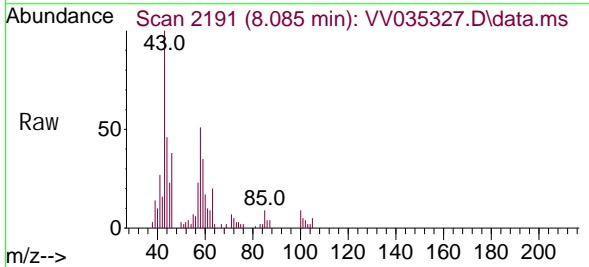
Instrument :
 MSVOA_V
 ClientSampleId :

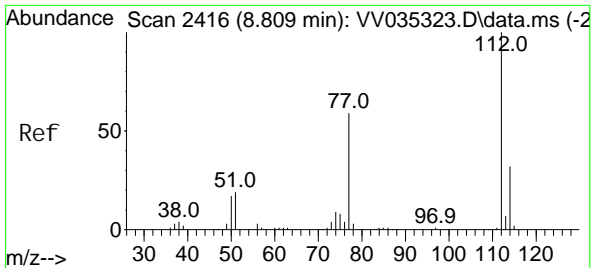


#48
 2-Hexanone
 Concen: 8.165 ug/L
 RT: 8.085 min Scan# 2191
 Delta R.T. 0.016 min
 Lab File: VV035327.D
 Acq: 22 Apr 2024 12:57

Tgt Ion: 43 Resp: 17056

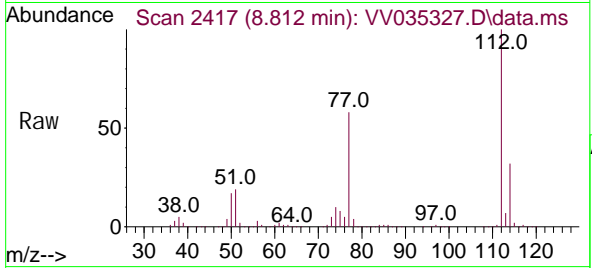
Ion	Ratio	Lower	Upper
43	100		
58	47.0	45.4	68.2
57	11.7	16.2	24.4#
100	6.2	10.1	15.1#



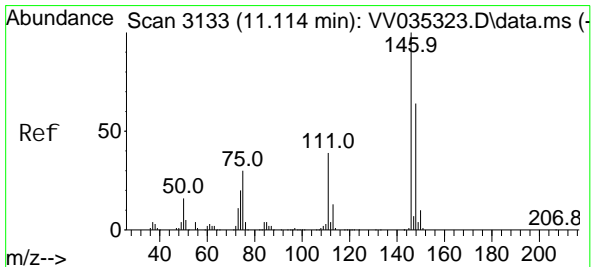
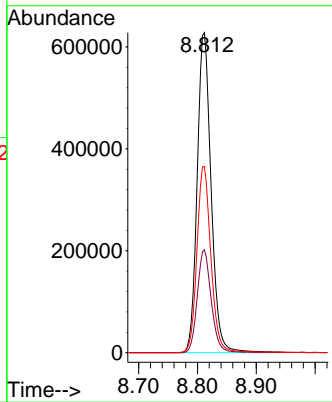
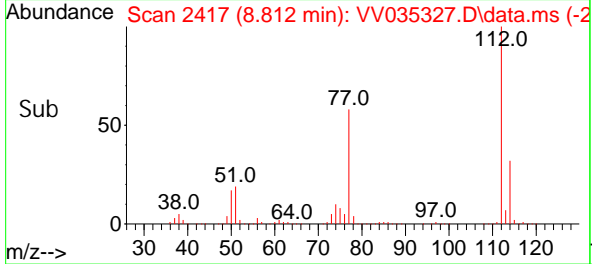


#51
 Chlorobenzene
 Concen: 218.678 ug/L
 RT: 8.812 min Scan# 2417
 Delta R.T. 0.003 min
 Lab File: VV035327.D
 Acq: 22 Apr 2024 12:57

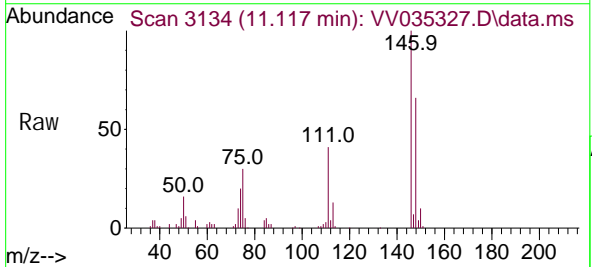
Instrument :
 MSVOA_V
 ClientSampleId :



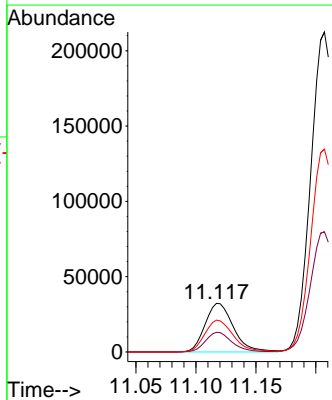
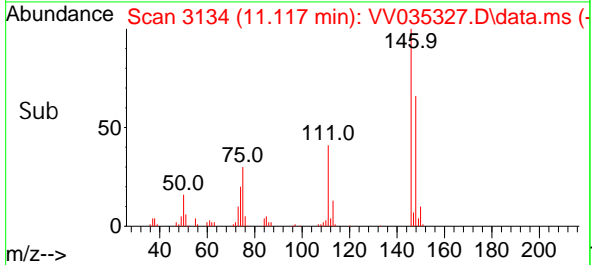
Tgt Ion: 112 Resp: 1032852
 Ion Ratio Lower Upper
 112 100
 114 32.2 22.0 41.0
 77 58.2 47.4 71.2

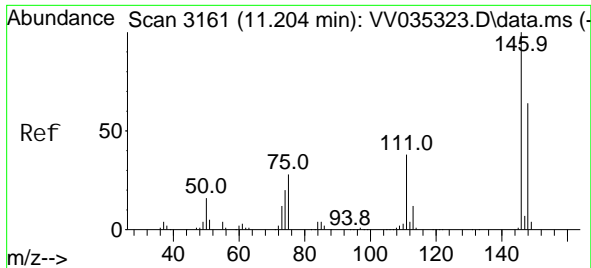


#64
 1,3-Dichlorobenzene
 Concen: 17.837 ug/L
 RT: 11.117 min Scan# 3134
 Delta R.T. 0.003 min
 Lab File: VV035327.D
 Acq: 22 Apr 2024 12:57



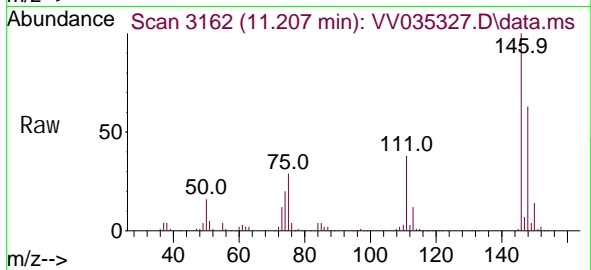
Tgt Ion: 146 Resp: 53031
 Ion Ratio Lower Upper
 146 100
 111 40.6 28.7 53.3
 148 65.6 44.0 81.8



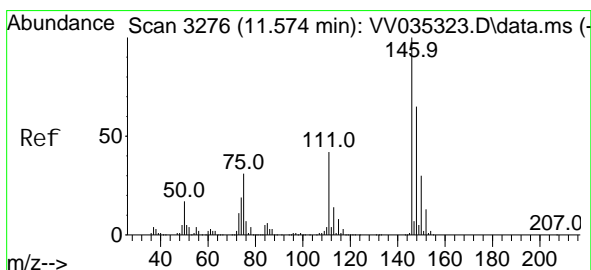
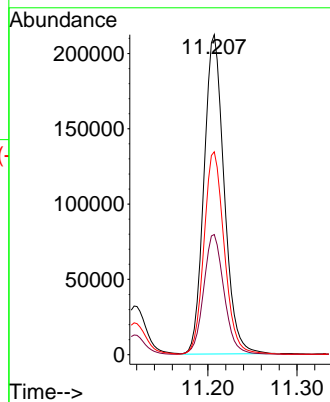
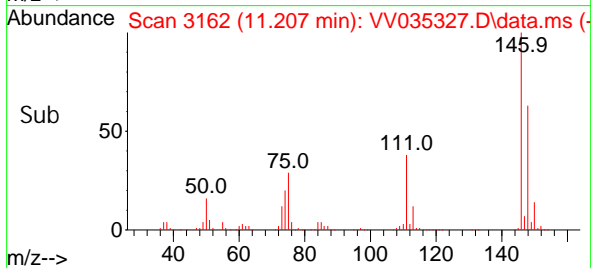


#65
 1, 4-Di chl orobenzene
 Concen: 110.220 ug/L
 RT: 11.207 min Scan# 3162
 Delta R.T. 0.003 min
 Lab File: VV035327.D
 Acq: 22 Apr 2024 12:57

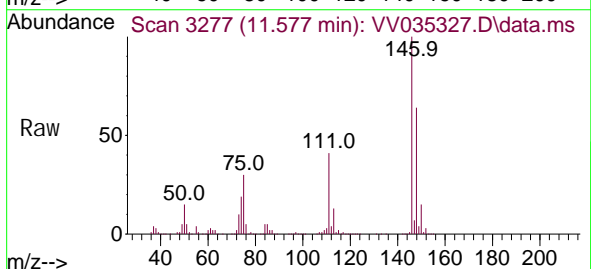
Instrument :
 MSVOA_V
 ClientSampleId :



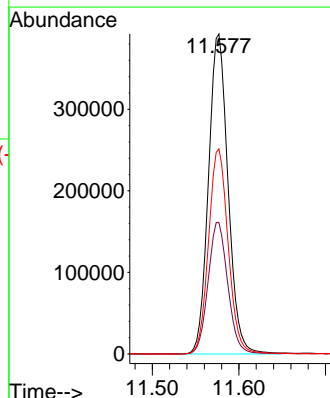
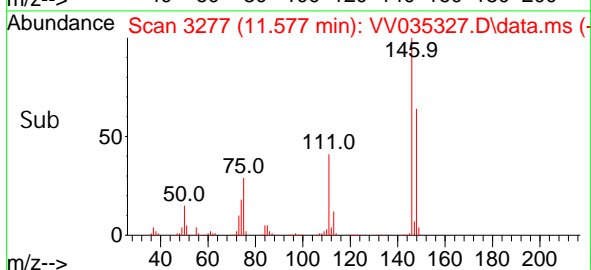
Tgt Ion: 146 Resp: 333233
 Ion Ratio Lower Upper
 146 100
 111 37.6 27.4 50.8
 148 63.4 44.2 82.2

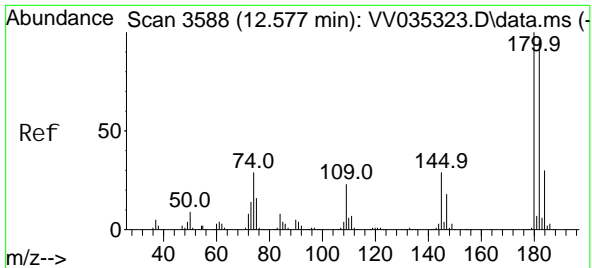


#67
 1, 2-Di chl orobenzene
 Concen: 208.105 ug/L
 RT: 11.577 min Scan# 3277
 Delta R.T. 0.003 min
 Lab File: VV035327.D
 Acq: 22 Apr 2024 12:57



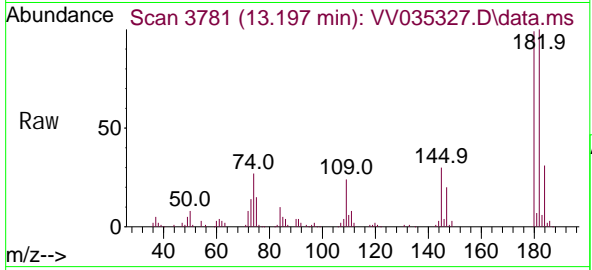
Tgt Ion: 146 Resp: 616338
 Ion Ratio Lower Upper
 146 100
 111 41.1 34.6 52.0
 148 64.1 51.5 77.3



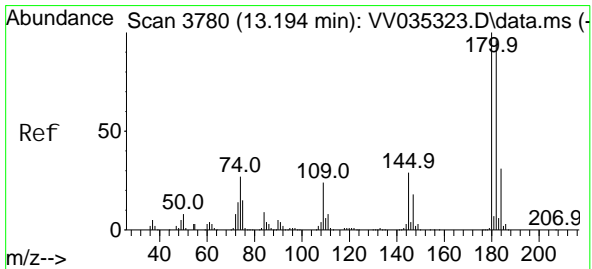
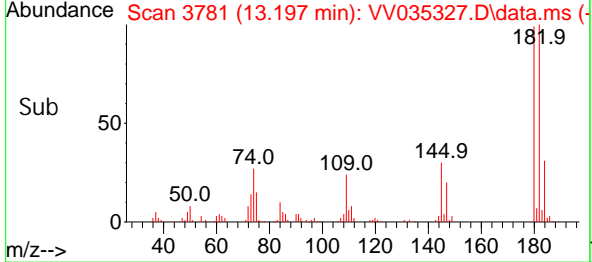
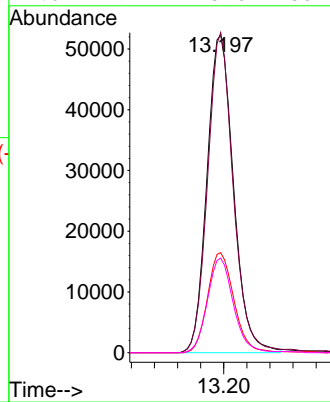


#69
 1, 3, 5-Tri chlorobenzene
 Concen: 38.809 ug/L
 RT: 13.197 min Scan# 3781
 Delta R.T. 0.620 min
 Lab File: VV035327.D
 Acq: 22 Apr 2024 12:57

Instrument : MSVOA_V
 ClientSampleId :

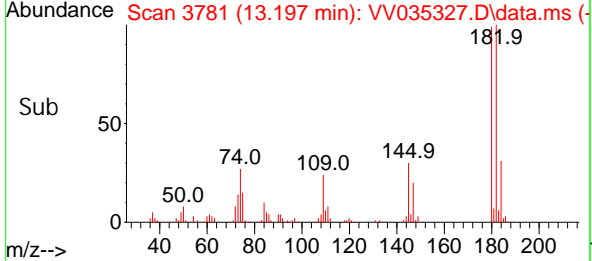
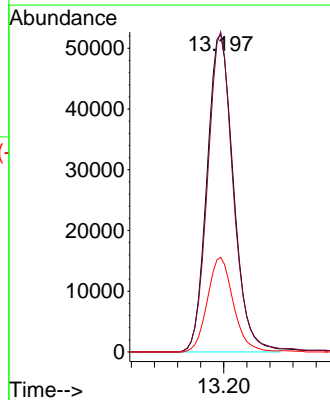
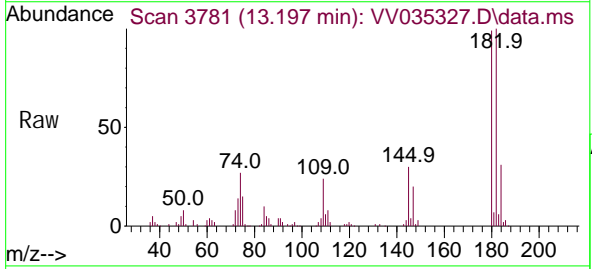


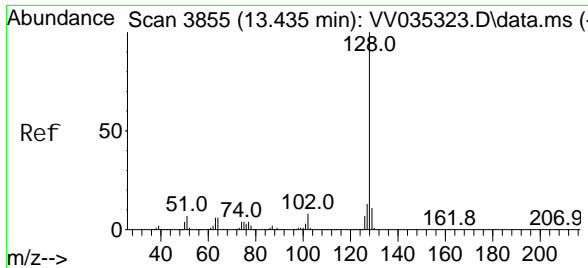
Tgt Ion: 180 Resp: 83156
 Ion Ratio Lower Upper
 180 100
 182 97.3 74.7 112.1
 184 31.5 24.0 36.0
 145 29.1 23.6 35.4



#70
 1, 2, 4-tri chlorobenzene
 Concen: 42.250 ug/L
 RT: 13.197 min Scan# 3781
 Delta R.T. 0.003 min
 Lab File: VV035327.D
 Acq: 22 Apr 2024 12:57

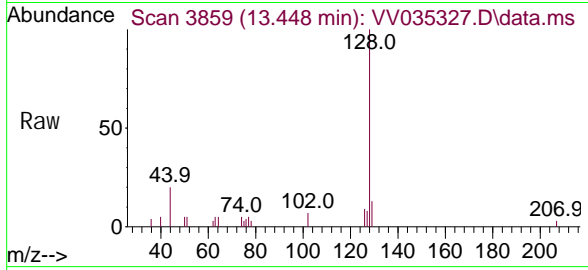
Tgt Ion: 180 Resp: 83156
 Ion Ratio Lower Upper
 180 100
 182 97.3 75.6 113.4
 145 29.1 24.1 36.1



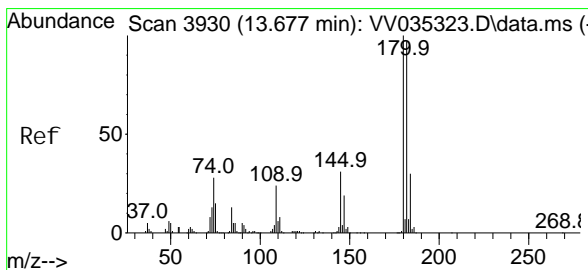
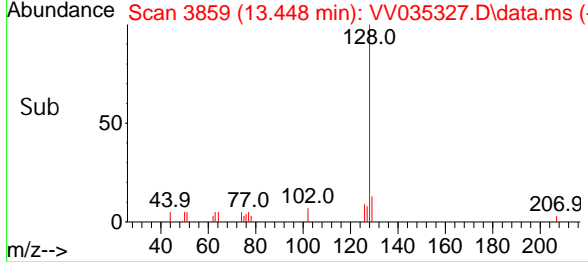
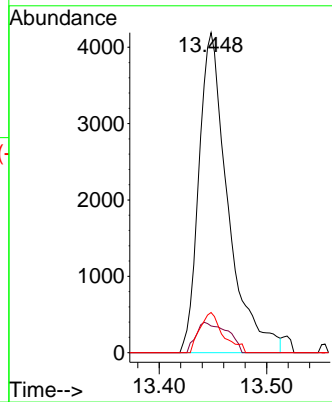


#71
 Naphthalene
 Concen: 1.440 ug/L
 RT: 13.448 min Scan# 3859
 Delta R.T. 0.013 min
 Lab File: VV035327.D
 Acq: 22 Apr 2024 12:57

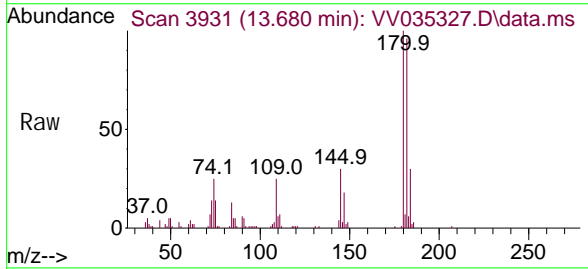
Instrument : MSVOA_V
 ClientSampleId :



Tgt Ion: 128 Resp: 7861
 Ion Ratio Lower Upper
 128 100
 127 10.2 10.5 15.7#
 129 9.7 8.7 13.1



#72
 1,2,3-Trichlorobenzene
 Concen: 14.941 ug/L
 RT: 13.680 min Scan# 3931
 Delta R.T. 0.003 min
 Lab File: VV035327.D
 Acq: 22 Apr 2024 12:57



Tgt Ion: 180 Resp: 28986
 Ion Ratio Lower Upper
 180 100
 182 96.0 76.2 114.2
 145 30.5 25.8 38.6

