

Data Path : Z:\voasrv\HPCHEM1\MSVOA_V\Data\VW042224\
 Data File : VW035335.D
 Acq On : 22 Apr 2024 16:02
 Operator : SY/MD
 Sample : VIBLK280
 Misc : 5.0mL/MSVOA_V/WATER
 ALS Vial : 16 Sample Multiplier: 1

Instrument :
 MSVOA_V
 ClientSampleId :
 VIBLK280

Quant Time: Apr 23 00:31:45 2024
 Quant Method : Z:\voasrv\HPCHEM1\MSVOA_V\Method\SFAMVLM032624WMA.M
 Quant Title : VOC Analysis
 QLast Update : Tue Apr 23 00:28:07 2024
 Response via : Initial Calibration

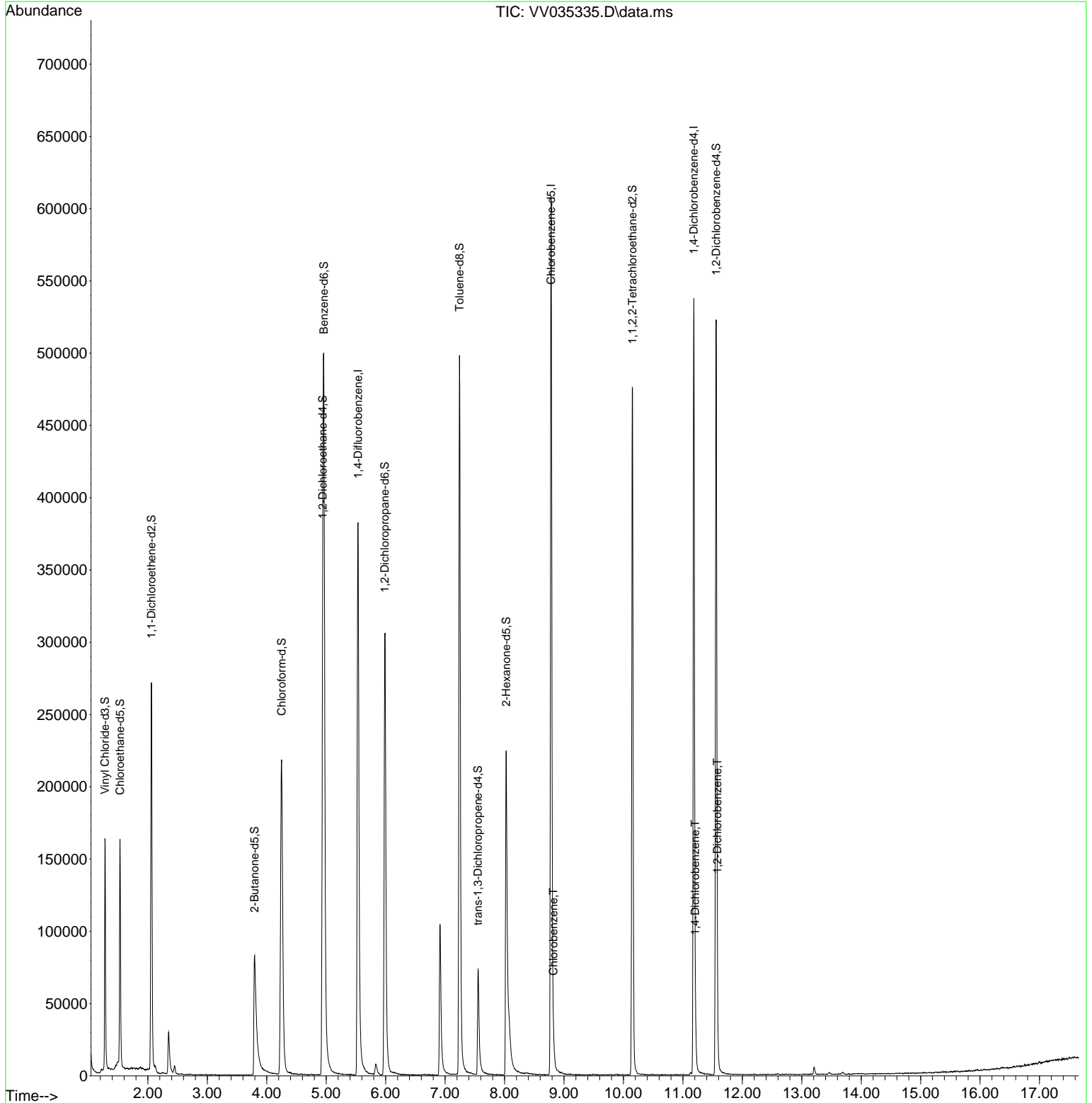
Compound	R.T.	QIon	Response	Conc	Units	Dev(Min)
Internal Standards						
1) 1,4-Difluorobenzene	5.535	114	341891	50.000	ug/L	0.00
28) Chlorobenzene-d5	8.783	117	341604	50.000	ug/L	0.00
58) 1,4-Dichlorobenzene-d4	11.185	152	143502	50.000	ug/L	0.00
System Monitoring Compounds						
4) Vinyl Chloride-d3	1.278	65	105628	31.991	ug/L	0.00
Spiked Amount	50.000	Range 60 - 135	Recovery =	63.980%		
7) Chloroethane-d5	1.532	69	101918	35.538	ug/L	0.00
Spiked Amount	50.000	Range 70 - 130	Recovery =	71.080%		
11) 1,1-Dichloroethene-d2	2.060	65	45921	31.727	ug/L	0.00
Spiked Amount	50.000	Range 60 - 125	Recovery =	63.460%		
21) 2-Butanone-d5	3.793	46	142024	72.526	ug/L	0.00
Spiked Amount	100.000	Range 40 - 130	Recovery =	72.530%		
24) Chloroform-d	4.249	84	241855	43.566	ug/L	0.00
Spiked Amount	50.000	Range 70 - 125	Recovery =	87.140%		
26) 1,2-Dichloroethane-d4	4.940	65	163382	46.355	ug/L	0.00
Spiked Amount	50.000	Range 70 - 125	Recovery =	92.720%		
32) Benzene-d6	4.960	84	443551	38.655	ug/L	0.00
Spiked Amount	50.000	Range 70 - 125	Recovery =	77.300%		
36) 1,2-Dichloropropane-d6	5.985	67	156933	43.069	ug/L	0.00
Spiked Amount	50.000	Range 70 - 120	Recovery =	86.140%		
41) Toluene-d8	7.243	98	350857	33.952	ug/L	0.00
Spiked Amount	50.000	Range 80 - 120	Recovery =	67.900%#		
43) trans-1,3-Dichloroprop...	7.554	79	48801	27.549	ug/L	0.00
Spiked Amount	50.000	Range 60 - 125	Recovery =	55.100%#		
47) 2-Hexanone-d5	8.027	63	74965	54.415	ug/L	0.00
Spiked Amount	100.000	Range 45 - 130	Recovery =	54.420%		
56) 1,1,2,2-Tetrachloroeth...	10.149	84	235948	47.023	ug/L	0.00
Spiked Amount	50.000	Range 65 - 120	Recovery =	94.040%		
66) 1,2-Dichlorobenzene-d4	11.561	152	139428	43.275	ug/L	0.00
Spiked Amount	50.000	Range 80 - 120	Recovery =	86.540%		
Target Compounds						
51) Chlorobenzene	8.821	112	12677	1.677	ug/L	98
65) 1,4-Dichlorobenzene	11.210	146	9566	1.946	ug/L	94
67) 1,2-Dichlorobenzene	11.580	146	8225	1.708	ug/L	95

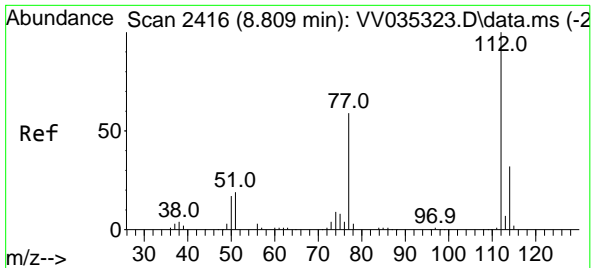
(#) = qualifier out of range (m) = manual integration (+) = signals summed

Data Path : Z:\voasrv\HPCHEM1\MSVOA_V\Data\VV042224\
 Data File : VV035335.D
 Acq On : 22 Apr 2024 16:02
 Operator : SY/MD
 Sample : VIBLK280
 Misc : 5.0mL/MSVOA_V/WATER
 ALS Vial : 16 Sample Multiplier: 1

Instrument :
 MSVOA_V
 ClientSampleId :
 VIBLK280

Quant Time: Apr 23 00:31:45 2024
 Quant Method : Z:\voasrv\HPCHEM1\MSVOA_V\Method\SFAMVLM032624WMA.M
 Quant Title : VOC Analysis
 QLast Update : Tue Apr 23 00:28:07 2024
 Response via : Initial Calibration

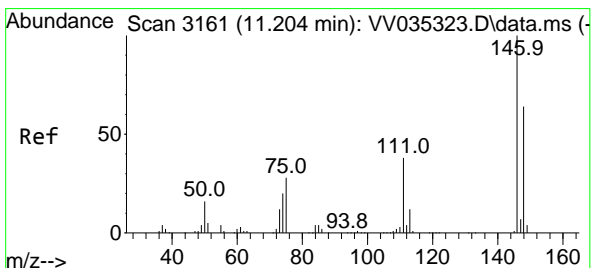
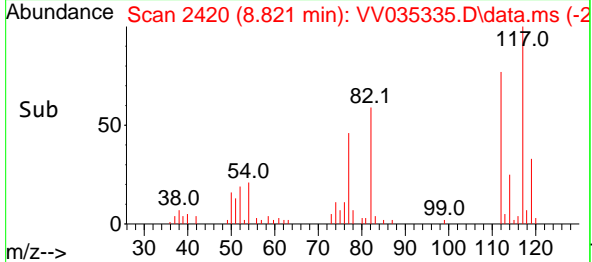
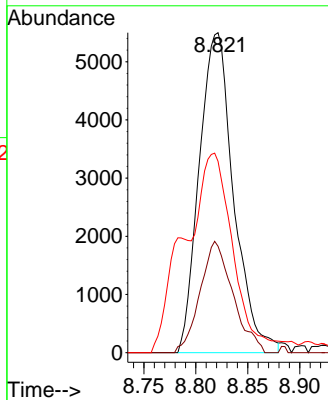
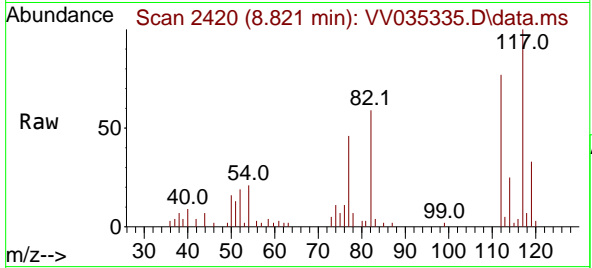




#51
 Chlorobenzene
 Concen: 1.677 ug/L
 RT: 8.821 min Scan# 24
 Delta R.T. 0.013 min
 Lab File: VV035335.D
 Acq: 22 Apr 2024 16:02

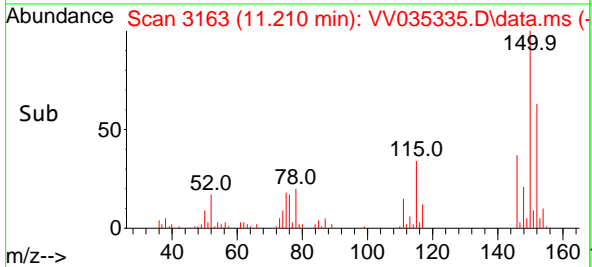
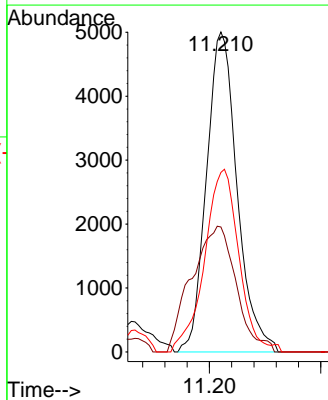
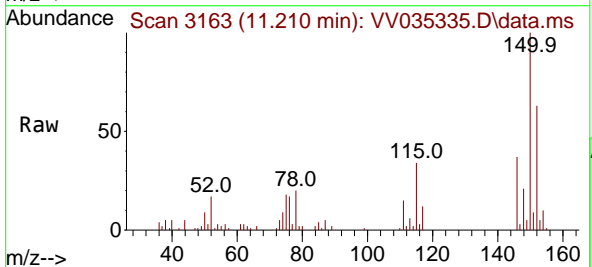
Instrument :
 MSVOA_V
 ClientSampleId :
 VIBLK280

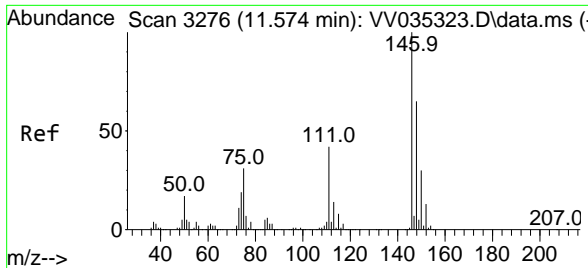
Tgt Ion	Resp	Lower	Upper
112	12677		
112	100		
114	33.3	22.0	41.0
77	59.8	47.4	71.2



#65
 1,4-Dichlorobenzene
 Concen: 1.946 ug/L
 RT: 11.210 min Scan# 3163
 Delta R.T. 0.006 min
 Lab File: VV035335.D
 Acq: 22 Apr 2024 16:02

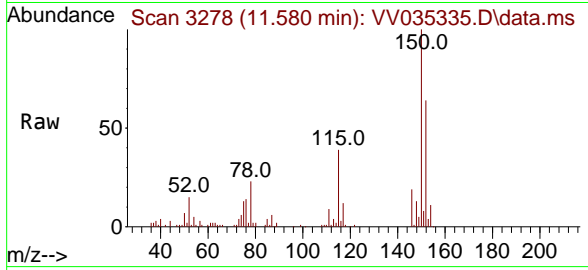
Tgt Ion	Resp	Lower	Upper
146	9566		
146	100		
111	39.1	27.4	50.8
148	56.1	44.2	82.2





#67
 1,2-Dichlorobenzene
 Concen: 1.708 ug/L
 RT: 11.580 min Scan# 31
 Delta R.T. 0.006 min
 Lab File: VV035335.D
 Acq: 22 Apr 2024 16:02

Instrument : MSVOA_V
 ClientSampleId : VIBLK280



Tgt Ion:146 Resp: 8225

Ion	Ratio	Lower	Upper
146	100		
111	48.4	34.6	52.0
148	66.9	51.5	77.3

