

Data Path : Z:\voasrv\HPCHEM1\MSVOA_V\Data\VV042224\
 Data File : VV035344.D
 Acq On : 22 Apr 2024 19:30
 Operator : SY/MD
 Sample : P2158-05
 Misc : 5.0mL/MSVOA_V/WATER
 ALS Vial : 25 Sample Multiplier: 1

Instrument :
 MSVOA_V
 ClientSampleId :
 MCORD2

Integration Parameters: LSCINT.P

Integrator: RTE
 Smoothing : OFF
 Sampling : 1
 Start Thrs : 0.2
 Stop Thrs : 0

Filtering: 5
 Min Area: 0 % of largest Peak
 Max Peaks: 100
 Peak Location: TOP

If leading or trailing edge < 100 prefer < Baseline drop else tangent >
 Peak separation: 5

Method : Z:\voasrv\HPCHEM1\MSVOA_V\Method\SFAMVLM032624WMA.M
 Title : VOC Analysis

Signal : TIC: VV035344.D\data.ms

peak #	R.T. min	first scan	max scan	last scan	PK TY	peak height	corr. area	corr. % max.	% of total
1	1.217	50	55	61	rBV5	2093	2806	0.04%	0.011%
2	1.278	67	74	92	rVB	170320	184789	2.70%	0.720%
3	1.532	146	153	173	rVB	173827	207595	3.03%	0.809%
4	2.060	307	317	332	rBV	308992	448788	6.55%	1.749%
5	2.449	433	438	446	rVB4	1644	2412	0.04%	0.009%
6	2.548	464	469	470	rBV2	453	350	0.01%	0.001%
7	2.651	497	501	507	rVB2	279	267	0.00%	0.001%
8	2.680	507	510	514	rBV2	445	268	0.00%	0.001%
9	2.706	514	518	521	rBV3	844	540	0.01%	0.002%
10	2.799	544	547	553	rVB3	317	345	0.01%	0.001%
11	2.828	553	556	560	rVV	337	265	0.00%	0.001%
12	2.873	564	570	575	rVB2	176	239	0.00%	0.001%
13	2.918	575	584	586	rBV3	305	381	0.01%	0.001%
14	3.114	637	645	646	rBV3	1031	930	0.01%	0.004%
15	3.381	723	728	732	rBV2	287	317	0.00%	0.001%
16	3.548	777	780	784	rBV2	512	367	0.01%	0.001%
17	3.609	796	799	805	rBV3	253	284	0.00%	0.001%
18	3.796	848	857	902	rBV	109947	371355	5.42%	1.447%
19	4.246	979	997	1023	rBV	249876	648253	9.46%	2.526%
20	4.455	1060	1062	1067	rVB2	623	481	0.01%	0.002%
21	4.487	1068	1072	1079	rVV4	407	608	0.01%	0.002%
22	4.519	1079	1082	1087	rVB5	407	386	0.01%	0.002%
23	4.735	1138	1149	1150	rBV5	2326	3035	0.04%	0.012%
24	4.899	1194	1200	1201	rBV2	454	436	0.01%	0.002%
25	4.957	1201	1218	1224	rBV2	603675	1407871	20.55%	5.487%
26	5.005	1226	1233	1277	rVB	1381410	3063100	44.72%	11.937%
27	5.532	1386	1397	1431	rBV	454874	948532	13.85%	3.697%
28	5.838	1481	1492	1506	rBV7	6777	16079	0.23%	0.063%
29	5.985	1525	1538	1568	rBV	344572	725085	10.59%	2.826%
30	6.333	1642	1646	1649	rVB4	606	334	0.00%	0.001%
31	6.474	1684	1690	1692	rVB2	342	228	0.00%	0.001%
32	6.616	1730	1734	1735	rBV	491	302	0.00%	0.001%
33	6.651	1743	1745	1751	rVV3	584	451	0.01%	0.002%
34	6.915	1815	1827	1862	rBV	126424	256335	3.74%	0.999%
35	7.149	1895	1900	1902	rBV2	345	311	0.00%	0.001%
36	7.162	1902	1904	1911	rVB3	504	473	0.01%	0.002%

Data Path : Z:\voasrv\HPCHEM1\MSVOA_V\Data\VW042224\
 Data File : VW035344.D
 Acq On : 22 Apr 2024 19:30
 Operator : SY/MD
 Sample : P2158-05
 Misc : 5.0mL/MSVOA_V/WATER
 ALS Vial : 25 Sample Multiplier: 1

Instrument :
 MSVOA_V
 ClientSampleId :
 MCORD2

Integration Parameters: LSCINT.P

Integrator: RTE
 Smoothing : OFF
 Sampling : 1
 Start Thrs: 0.2
 Stop Thrs : 0

Filtering: 5
 Min Area: 0 % of largest Peak
 Max Peaks: 100
 Peak Location: TOP

If leading or trailing edge < 100 prefer < Baseline drop else tangent >
 Peak separation: 5

Method : Z:\voasrv\HPCHEM1\MSVOA_V\Method\SFAMVLM032624WMA.M
 Title : VOC Analysis

37	7.243	1917	1929	1974	rBV	626144	1137082	16.60%	4.431%
38	7.554	2017	2026	2053	rBV	90234	171167	2.50%	0.667%
39	7.763	2088	2091	2094	rVB3	475	301	0.00%	0.001%
40	7.796	2097	2101	2106	rVB5	510	468	0.01%	0.002%
41	7.828	2106	2111	2113	rBV2	364	249	0.00%	0.001%
42	7.866	2117	2123	2125	rBV3	521	539	0.01%	0.002%
43	7.911	2132	2137	2148	rVB8	1341	2074	0.03%	0.008%
44	7.995	2155	2163	2164	rBV3	546	592	0.01%	0.002%
45	8.027	2164	2173	2225	rBV4	314636	765544	11.18%	2.983%
46	8.368	2276	2279	2283	rVB3	897	562	0.01%	0.002%
47	8.416	2291	2294	2301	rVB5	615	671	0.01%	0.003%
48	8.458	2301	2307	2308	rBV3	350	320	0.00%	0.001%
49	8.503	2317	2321	2324	rBV3	351	321	0.00%	0.001%
50	8.519	2324	2326	2330	rVB2	463	350	0.01%	0.001%
51	8.545	2330	2334	2337	rBV2	481	400	0.01%	0.002%
52	8.564	2337	2340	2343	rVB2	416	256	0.00%	0.001%
53	8.596	2343	2350	2354	rBV3	469	419	0.01%	0.002%
54	8.677	2372	2375	2382	rBV2	442	511	0.01%	0.002%
55	8.808	2397	2416	2471	rVV2	3498595	6849942	100.00%	26.695%
56	9.098	2503	2506	2510	rVB3	430	235	0.00%	0.001%
57	9.210	2537	2541	2544	rBV3	495	348	0.01%	0.001%
58	9.542	2640	2644	2648	rBV3	326	286	0.00%	0.001%
59	9.734	2701	2704	2708	rVB2	400	296	0.00%	0.001%
60	9.760	2708	2712	2714	rBV	459	242	0.00%	0.001%
61	9.841	2731	2737	2740	rBV3	359	382	0.01%	0.001%
62	9.876	2744	2748	2749	rBV2	558	364	0.01%	0.001%
63	10.149	2821	2833	2859	rBV	552295	865171	12.63%	3.372%
64	10.320	2882	2886	2890	rBV3	1018	881	0.01%	0.003%
65	10.423	2915	2918	2924	rBV3	594	443	0.01%	0.002%
66	10.451	2924	2927	2932	rVB2	328	237	0.00%	0.001%
67	10.513	2941	2946	2949	rBV2	259	256	0.00%	0.001%
68	10.824	3040	3043	3046	rBV3	416	353	0.01%	0.001%
69	10.892	3061	3064	3066	rVV	462	240	0.00%	0.001%
70	11.117	3124	3134	3145	rBV	156434	250482	3.66%	0.976%
71	11.204	3145	3161	3194	rVB2	1217701	2906583	42.43%	11.327%
72	11.503	3245	3254	3259	rBV4	9068	16036	0.23%	0.062%
73	11.574	3261	3276	3301	rVB2	1556852	3325876	48.55%	12.961%
74	11.860	3363	3365	3370	rVB3	1002	594	0.01%	0.002%
75	12.120	3441	3446	3448	rBV3	390	394	0.01%	0.002%
76	12.246	3481	3485	3490	rBV2	550	451	0.01%	0.002%

Data Path : Z:\voasrv\HPCHEM1\MSVOA_V\Data\VV042224\
 Data File : VV035344.D
 Acq On : 22 Apr 2024 19:30
 Operator : SY/MD
 Sample : P2158-05
 Misc : 5.0mL/MSVOA_V/WATER
 ALS Vial : 25 Sample Multiplier: 1

Instrument :
 MSVOA_V
 ClientSampleId :
 MCORD2

Integration Parameters: LSCINT.P

Integrator: RTE
 Smoothing : OFF
 Sampling : 1
 Start Thrs : 0.2
 Stop Thrs : 0

Filtering: 5
 Min Area: 0 % of largest Peak
 Max Peaks: 100
 Peak Location: TOP

If leading or trailing edge < 100 prefer < Baseline drop else tangent >
 Peak separation: 5

Method : Z:\voasrv\HPCHEM1\MSVOA_V\Method\SFAMVLM032624WMA.M
 Title : VOC Analysis

77	12.291	3497	3499	3502	rBV	500	316	0.00%	0.001%
78	12.342	3507	3515	3526	rBV4	4522	8172	0.12%	0.032%
79	12.522	3565	3571	3572	rBV4	945	897	0.01%	0.003%
80	12.590	3583	3592	3598	rBV5	2905	3631	0.05%	0.014%
81	12.689	3617	3623	3633	rBV5	2604	3965	0.06%	0.015%
82	12.853	3668	3674	3677	rBV2	592	516	0.01%	0.002%
83	12.905	3687	3690	3693	rVB2	466	315	0.00%	0.001%
84	12.940	3698	3701	3706	rBV3	439	431	0.01%	0.002%
85	13.075	3741	3743	3748	rBV	320	242	0.00%	0.001%
86	13.139	3759	3763	3765	rBV2	404	358	0.01%	0.001%
87	13.197	3769	3781	3813	rVV	492413	784443	11.45%	3.057%
88	13.413	3843	3848	3850	rBV4	352	380	0.01%	0.001%
89	13.512	3876	3879	3883	rVB2	488	339	0.00%	0.001%
90	13.538	3883	3887	3889	rVV3	439	369	0.01%	0.001%
91	13.564	3893	3895	3901	rVB2	436	276	0.00%	0.001%
92	13.680	3920	3931	3951	rBV	145917	232349	3.39%	0.906%
93	13.799	3965	3968	3973	rBV3	374	303	0.00%	0.001%
94	13.975	4021	4023	4030	rVB3	837	614	0.01%	0.002%
95	14.146	4072	4076	4078	rBV2	445	323	0.00%	0.001%
96	14.506	4185	4188	4189	rBV	505	324	0.00%	0.001%
97	14.670	4237	4239	4241	rBV3	563	343	0.01%	0.001%
98	14.734	4254	4259	4260	rBV3	2644	1866	0.03%	0.007%
99	14.815	4281	4284	4285	rBV2	588	337	0.00%	0.001%
100	15.339	4437	4447	4458	rBV3	12908	22055	0.32%	0.086%

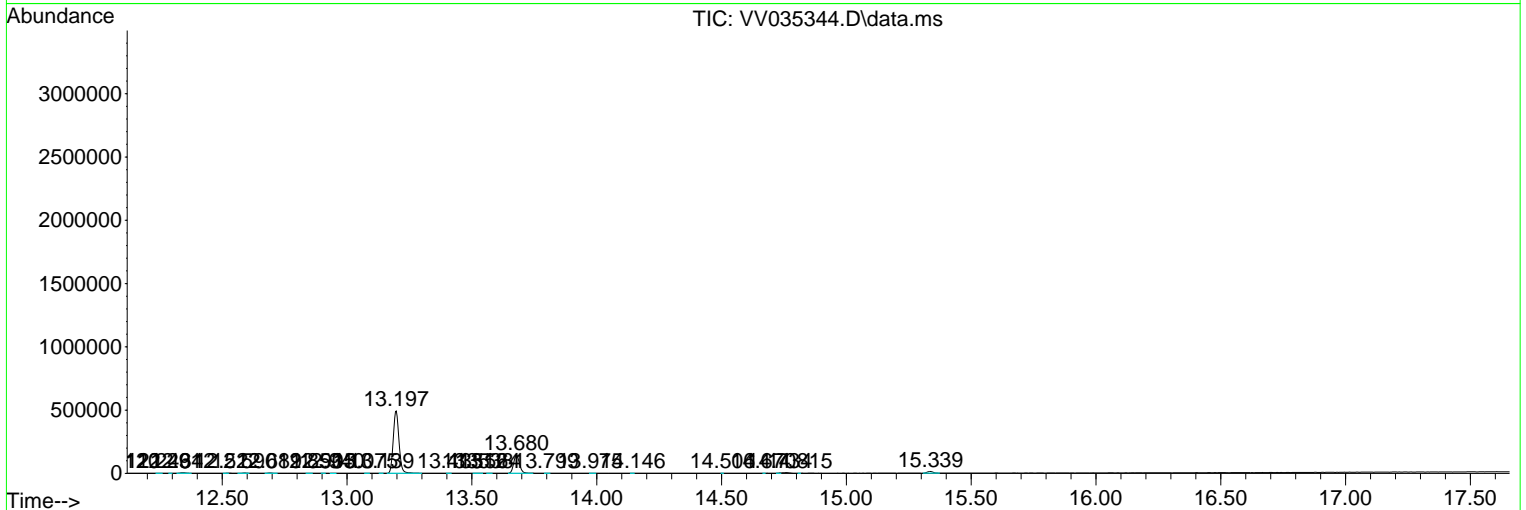
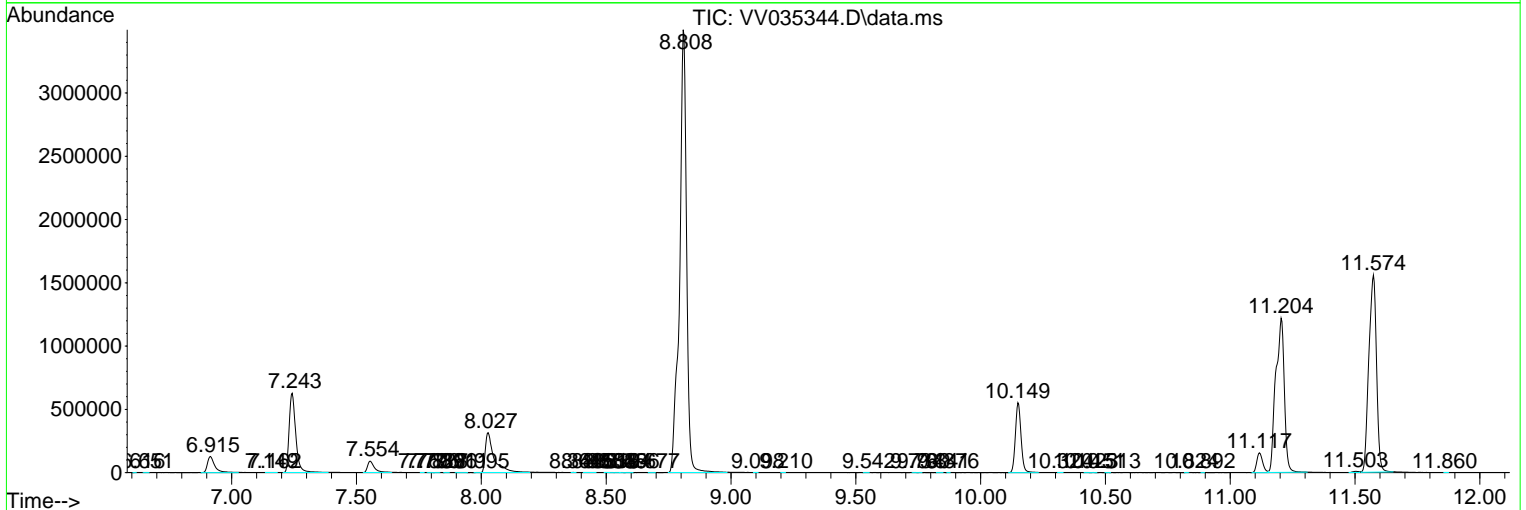
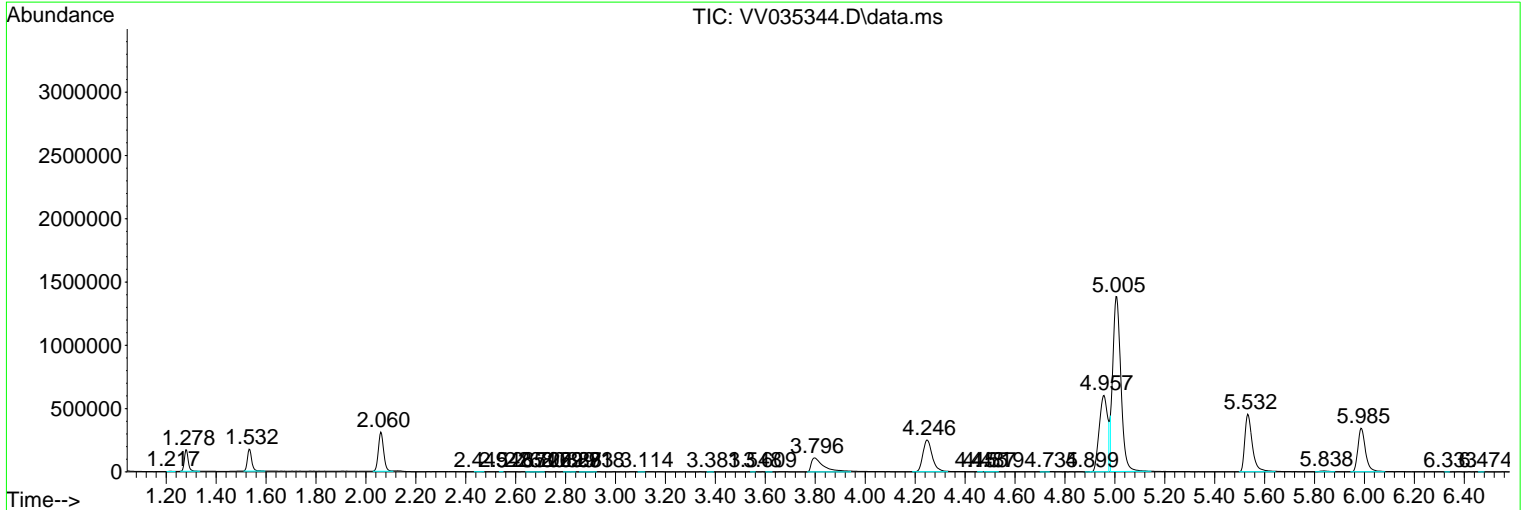
Sum of corrected areas: 25659680

Data Path : Z:\voasrv\HPCHEM1\MSVOA_V\Data\VV042224\
 Data File : VV035344.D
 Acq On : 22 Apr 2024 19:30
 Operator : SY/MD
 Sample : P2158-05
 Misc : 5.0mL/MSVOA_V/WATER
 ALS Vial : 25 Sample Multiplier: 1

Instrument :
 MSVOA_V
ClientSampleId :
 MCORD2

Quant Method : Z:\voasrv\HPCHEM1\MSVOA_V\Method\SFAMVLM032624WMA.M
 Quant Title : VOC Analysis

TIC Library : C:\Database\NIST20.L
 TIC Integration Parameters: LSCINT.P



Library Search Compound Report

Data Path : Z:\voasrv\HPCHEM1\MSVOA_V\Data\VV042224\
Data File : VV035344.D
Acq On : 22 Apr 2024 19:30
Operator : SY/MD
Sample : P2158-05
Misc : 5.0mL/MSVOA_V/WATER
ALS Vial : 25 Sample Multiplier: 1

Instrument :
MSVOA_V
ClientSampleId :
MCORD2

Quant Method : Z:\voasrv\HPCHEM1\MSVOA_V\Method\SFAMVLM032624WMA.M
Quant Title : VOC Analysis

TIC Library : C:\Database\NIST20.L
TIC Integration Parameters: LSCINT.P

No Library Search Compounds Detected

Data Path : Z:\voasrv\HPCHEM1\MSVOA_V\Data\VV042224\
Data File : VV035344.D
Acq On : 22 Apr 2024 19:30
Operator : SY/MD
Sample : P2158-05
Misc : 5.0mL/MSVOA_V/WATER
ALS Vial : 25 Sample Multiplier: 1

Instrument :
MSVOA_V
ClientSampleId :
MCORD2

Quant Method : Z:\voasrv\HPCHEM1\MSVOA_V\Method\SFAMVLM032624WMA.M
Quant Title : VOC Analysis

TIC Library : C:\Database\NIST20.L
TIC Integration Parameters: LSCINT.P

TIC Top Hit name	RT	EstConc	Units	Response	--Internal Standard--		
					#	RT	Resp Conc
