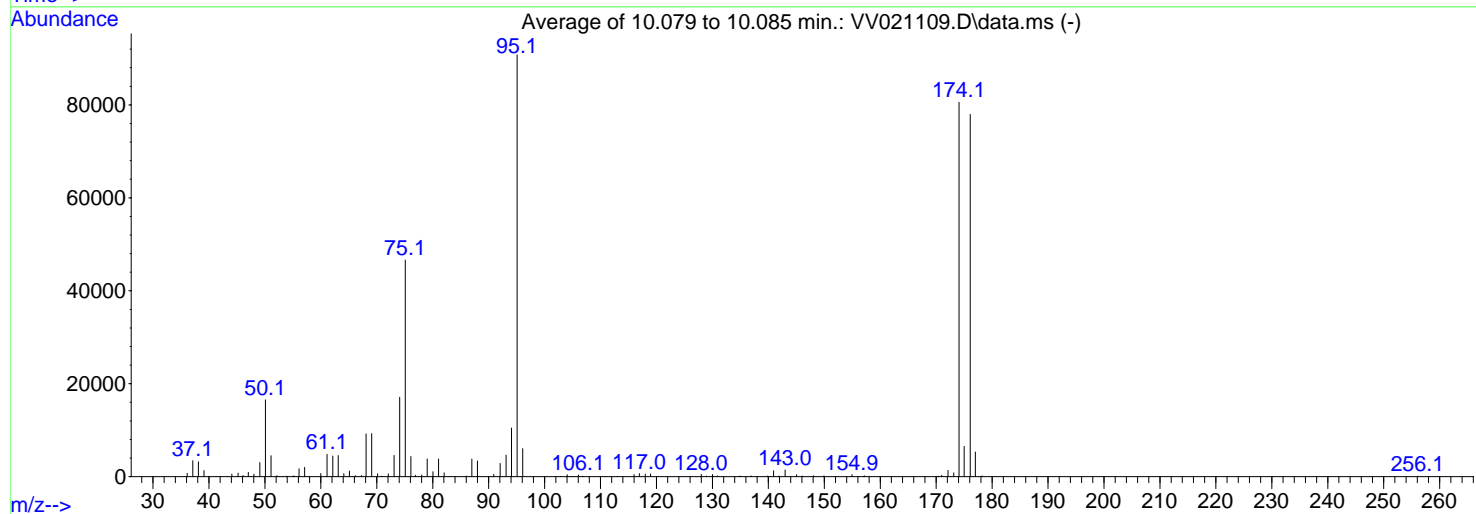
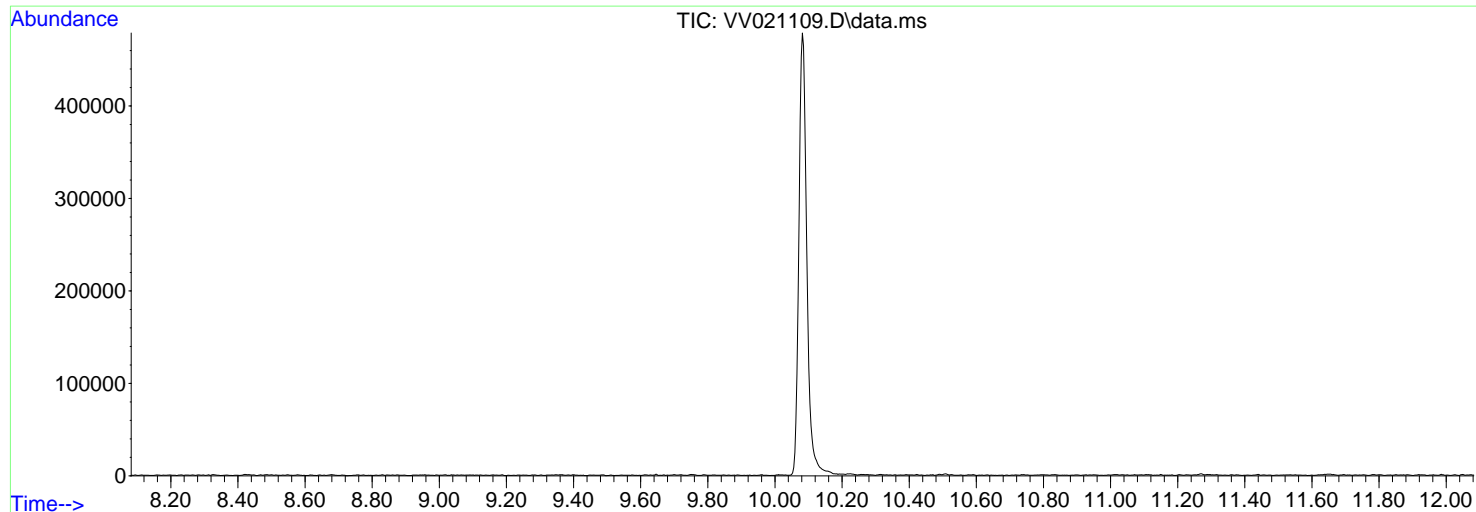


Data Path : Z:\voasrv\HPCHEM1\MSVOA_V\Data\VV042321\
 Data File : VV021109.D
 Acq On : 23 Apr 2021 10:29
 Operator : SY/MD
 Sample : BFB88
 Misc : 5.0mL/MSVOA_V/WATER
 ALS Vial : 1 Sample Multiplier: 1

Instrument :
 MSVOA_V
 ClientSampleId :
 BFB188

Integration File: LSCINT.P

Method : Z:\voasrv\HPCHEM1\MSVOA_V\Method\SFAMVLM042121WMA.M
 Title : VOC Analysis
 Last Update : Tue Apr 27 04:16:04 2021



AutoFind: Scans 2811, 2812, 2813; Background Corrected with Scan 2800

Target Mass	Rel. to Mass	Lower Limit%	Upper Limit%	Rel. Abn%	Raw Abn	Result Pass/Fail
50	95	15	40	18.2	16513	PASS
75	95	30	80	51.4	46624	PASS
95	95	100	100	100.0	90773	PASS
96	95	5	9	6.6	6033	PASS
173	174	0.00	2	1.0	836	PASS
174	95	50	120	88.8	80587	PASS
175	174	5	9	8.1	6492	PASS
176	174	95	101	96.8	77968	PASS
177	176	5	9	6.8	5295	PASS

m/z	Abundance
40.00	210.0
44.10	257.0
51.70	176.0
207.20	134.0

Instrument :
MSVOA_V
ClientSampleId :
BFB188

m/z	Abundance
36.10	547.0
37.10	3367.0
38.10	3111.0
39.10	1141.0
39.90	229.0
43.30	102.0
44.10	787.0
45.20	633.0
46.10	220.0
47.00	942.0
48.00	534.0
49.10	2641.0
50.10	16552.0
51.10	4517.0
52.20	223.0
55.30	309.0
56.10	1755.0
57.10	2084.0
58.00	103.0
60.00	666.0
61.10	4430.0
62.10	4545.0
63.10	4101.0
64.10	695.0
65.10	1221.0
66.20	211.0
67.30	232.0
68.10	8714.0
69.10	8958.0
70.20	411.0
70.90	161.0
72.10	664.0
73.10	4750.0
74.10	16840.0
75.10	46264.0
76.10	4282.0
76.90	313.0
78.10	533.0
79.00	3735.0
80.00	1081.0
81.00	3785.0
82.10	741.0
83.00	134.0
87.00	3961.0
88.00	3272.0
90.90	399.0
92.10	2715.0
93.10	4441.0
94.10	10858.0
95.10	89088.0
96.10	5817.0
104.00	444.0
104.80	152.0
106.10	298.0
113.00	134.0
116.00	525.0
117.00	651.0
118.00	528.0
118.90	620.0
128.00	462.0
128.90	128.0
130.10	431.0
130.90	173.0
135.00	226.0
136.90	252.0
139.80	110.0
141.00	1221.0
141.90	181.0
143.00	1526.0
145.00	415.0
146.00	128.0
148.10	205.0
150.00	102.0
154.90	452.0
157.20	136.0
170.40	139.0
171.10	198.0
172.10	1453.0
173.20	1258.0
174.10	82136.0
175.00	6707.0
176.10	79896.0
177.00	5308.0
178.20	188.0
256.10	126.0

Instrument :
MSVOA_V
ClientSampleId :
BFB188

m/z	Abundance
36.10	747.0
37.10	3606.0
38.10	3277.0
39.10	1354.0
39.90	295.0
44.20	879.0
45.20	796.0
46.10	299.0
47.10	889.0
48.10	517.0
49.10	3177.0
50.10	17088.0
51.10	4680.0
52.20	205.0
53.30	104.0
53.90	158.0
55.10	236.0
56.10	1777.0
57.10	2066.0
58.00	126.0
60.00	684.0
61.10	5001.0
62.10	4469.0
63.10	4794.0
64.10	695.0
65.10	1279.0
66.20	249.0
67.30	234.0
68.10	9622.0
69.10	9561.0
70.20	615.0
70.90	153.0
72.00	630.0
73.10	4832.0
74.10	17656.0
75.10	48264.0
76.10	4444.0
76.90	327.0
78.10	425.0
79.00	3968.0
80.00	1072.0
81.10	3907.0
82.00	863.0
86.00	170.0
87.00	3946.0
88.00	3566.0
90.90	545.0
92.10	3013.0
93.10	4785.0
94.10	10846.0
95.10	93152.0
96.10	6230.0
102.80	123.0
104.00	426.0
106.00	332.0
106.80	131.0
116.00	470.0
117.00	632.0
118.00	598.0
119.00	606.0
128.00	488.0
129.00	161.0
130.00	454.0
130.90	210.0
134.80	162.0
136.90	174.0
139.80	151.0
140.90	1285.0
141.90	166.0
143.00	1443.0
145.00	441.0
146.00	144.0
148.10	202.0
150.00	197.0
155.00	455.0
157.20	204.0
170.40	139.0
171.00	291.0
172.10	1317.0
174.10	82560.0
175.00	6756.0
176.10	80136.0
177.00	5452.0
178.20	186.0
256.10	148.0

Instrument :
MSVOA_V
ClientSampleId :
BFB188

m/z	Abundance
36.10	883.0
37.10	3369.0
38.10	3270.0
39.10	1415.0
39.90	314.0
41.30	145.0
44.20	789.0
45.20	848.0
46.10	237.0
47.10	952.0
48.10	489.0
49.10	3327.0
50.10	15898.0
51.10	4329.0
52.10	178.0
53.20	136.0
53.90	148.0
55.00	250.0
56.10	1520.0
57.10	1857.0
60.00	750.0
61.10	5082.0
62.20	4312.0
63.10	4721.0
64.10	608.0
65.10	1084.0
66.20	174.0
67.20	245.0
68.10	9251.0
69.10	9295.0
70.10	796.0
72.00	480.0
73.10	4127.0
74.10	16784.0
75.10	45344.0
76.10	4263.0
76.90	342.0
78.00	232.0
79.00	3746.0
80.10	1036.0
81.10	3715.0
82.00	904.0
86.00	187.0
87.00	3491.0
88.00	3266.0
90.90	553.0
92.00	2837.0
93.10	4636.0
94.10	9661.0
95.10	90080.0
96.10	6053.0
102.80	113.0
104.10	355.0
105.20	106.0
106.00	411.0
106.90	133.0
110.80	119.0
116.00	384.0
116.90	653.0
118.00	547.0
119.00	545.0
128.00	462.0
129.00	163.0
129.90	446.0
130.90	162.0
134.70	120.0
135.10	139.0
136.90	140.0
139.80	160.0
140.90	1302.0
141.90	108.0
143.00	1414.0
145.10	438.0
146.10	177.0
148.10	207.0
149.90	205.0
155.00	412.0
157.00	210.0
157.20	205.0
171.00	309.0
172.10	1236.0
173.10	1249.0
174.10	77064.0
175.00	6012.0
176.10	73872.0
177.00	5124.0
178.20	130.0

Instrument :
MSVOA_V
ClientSampleId :
BFB188