

Data Path : Z:\voasrv\HPCHEM1\MSVOA\_V\Data\VV042523\  
 Data File : VV030831.D  
 Acq On : 25 Apr 2023 12:53  
 Operator : SY/MD  
 Sample : 02479-18  
 Misc : 5.0mL/MSVOA\_V/WATER  
 ALS Vial : 9 Sample Multiplier: 1

Instrument :  
 MSVOA\_V  
 ClientSampleId :  
 VHBLK001

Integration Parameters: LSCINT.P

Integrator: RTE  
 Smoothing : OFF Filtering: 5  
 Sampling : 1 Min Area: 0 % of largest Peak  
 Start Thrs: 0.2 Max Peaks: 100  
 Stop Thrs : 0 Peak Location: TOP

If leading or trailing edge < 100 prefer < Baseline drop else tangent >  
 Peak separation: 5

Method : Z:\voasrv\HPCHEM1\MSVOA\_V\Method\SFAMVLM041723WMA.M  
 Title : VOC Analysis

Signal : TIC: VV030831.D\data.ms

peak #	R.T. min	first scan	max scan	last scan	PK TY	peak height	corr. area	corr. % max.	% of total
1	1.281	69	75	86	rBV	108089	118985	13.70%	1.788%
2	1.535	148	154	169	rVB	102699	123980	14.28%	1.863%
3	2.066	309	319	334	rBV	209329	310142	35.71%	4.660%
4	2.670	504	507	510	rBV4	1248	670	0.08%	0.010%
5	2.687	510	512	513	rBV2	1070	494	0.06%	0.007%
6	2.838	557	559	560	rBV3	1143	443	0.05%	0.007%
7	2.905	577	580	582	rBV4	1133	588	0.07%	0.009%
8	2.947	591	593	596	rBV4	1096	587	0.07%	0.009%
9	3.043	618	623	625	rBV6	1864	1487	0.17%	0.022%
10	3.092	634	638	639	rBV3	649	481	0.06%	0.007%
11	3.121	645	647	649	rBV3	1328	464	0.05%	0.007%
12	3.159	657	659	662	rVB3	1596	630	0.07%	0.009%
13	3.240	680	684	685	rBV4	1353	815	0.09%	0.012%
14	3.304	699	704	705	rBV5	1477	1049	0.12%	0.016%
15	3.426	738	742	743	rBV4	804	539	0.06%	0.008%
16	3.497	763	764	767	rVB3	1083	404	0.05%	0.006%
17	3.577	787	789	795	rBV7	1496	1528	0.18%	0.023%
18	3.609	795	799	802	rVV5	1936	1361	0.16%	0.020%
19	3.703	823	828	832	rBV7	1047	1194	0.14%	0.018%
20	3.725	832	835	841	rBV6	1475	1056	0.12%	0.016%
21	3.754	841	844	845	rBV3	914	478	0.06%	0.007%
22	3.799	849	858	876	rBV	56136	146628	16.88%	2.203%
23	4.262	989	1002	1022	rVB	138174	342061	39.39%	5.140%
24	4.506	1074	1078	1083	rBV8	1385	1632	0.19%	0.025%
25	4.571	1094	1098	1100	rBV5	1118	797	0.09%	0.012%
26	4.661	1124	1126	1131	rVB4	1198	743	0.09%	0.011%
27	4.966	1204	1221	1242	rBV2	324734	868453	100.00%	13.049%
28	5.391	1350	1353	1357	rBV4	1624	1025	0.12%	0.015%
29	5.542	1388	1400	1425	rBV	270772	558093	64.26%	8.386%
30	5.940	1522	1524	1526	rBV3	1074	593	0.07%	0.009%
31	5.998	1530	1542	1562	rVV	193985	396412	45.65%	5.956%
32	6.259	1621	1623	1624	rBV3	1150	435	0.05%	0.007%
33	6.297	1634	1635	1638	rBV4	994	517	0.06%	0.008%
34	6.333	1644	1646	1648	rBV2	1052	608	0.07%	0.009%
35	6.487	1692	1694	1698	rBV5	1018	831	0.10%	0.012%
36	6.545	1705	1712	1713	rBV7	1269	1231	0.14%	0.018%

Data Path : Z:\voasrv\HPCHEM1\MSVOA\_V\Data\VW042523\  
 Data File : VW030831.D  
 Acq On : 25 Apr 2023 12:53  
 Operator : SY/MD  
 Sample : 02479-18  
 Misc : 5.0mL/MSVOA\_V/WATER  
 ALS Vial : 9 Sample Multiplier: 1

Instrument :  
 MSVOA\_V  
 ClientSampleId :  
 VHBLK001

Integration Parameters: LSCINT.P

Integrator: RTE  
 Smoothing : OFF  
 Sampling : 1  
 Start Thrs: 0.2  
 Stop Thrs : 0

Filtering: 5  
 Min Area: 0 % of largest Peak  
 Max Peaks: 100  
 Peak Location: TOP

If leading or trailing edge < 100 prefer < Baseline drop else tangent >  
 Peak separation: 5

Method : Z:\voasrv\HPCHEM1\MSVOA\_V\Method\SFAMVLM041723WMA.M  
 Title : VOC Analysis

37	6.600	1727	1729	1734	rVB5	1051	663	0.08%	0.010%
38	6.690	1753	1757	1760	rBV4	1644	1347	0.16%	0.020%
39	6.789	1786	1788	1793	rVB6	1725	1020	0.12%	0.015%
40	6.818	1793	1797	1799	rBV3	1121	816	0.09%	0.012%
41	6.876	1811	1815	1817	rBV5	1227	913	0.11%	0.014%
42	6.921	1818	1829	1846	rVV	96225	176441	20.32%	2.651%
43	7.252	1920	1932	1950	rBV	372417	655809	75.51%	9.854%
44	7.561	2018	2028	2050	rBV	68066	126396	14.55%	1.899%
45	7.937	2142	2145	2146	rBV3	1166	642	0.07%	0.010%
46	7.995	2161	2163	2164	rBV	1143	406	0.05%	0.006%
47	8.034	2166	2175	2203	rVV	175608	352876	40.63%	5.302%
48	8.551	2333	2336	2338	rBV4	1332	802	0.09%	0.012%
49	8.686	2375	2378	2379	rBV2	1122	568	0.07%	0.009%
50	8.792	2400	2411	2431	rVV	407806	689071	79.34%	10.354%
51	9.095	2503	2505	2508	rBV4	1346	749	0.09%	0.011%
52	9.374	2589	2592	2593	rBV3	1033	559	0.06%	0.008%
53	9.452	2612	2616	2620	rBV5	980	940	0.11%	0.014%
54	9.474	2620	2623	2625	rBV4	1261	786	0.09%	0.012%
55	9.583	2652	2657	2662	rVB8	2263	2148	0.25%	0.032%
56	9.606	2662	2664	2666	rBV3	1188	684	0.08%	0.010%
57	9.712	2693	2697	2699	rVB5	960	745	0.09%	0.011%
58	9.725	2699	2701	2704	rBV4	1059	480	0.06%	0.007%
59	9.892	2750	2753	2756	rBV5	1002	631	0.07%	0.009%
60	9.927	2761	2764	2768	rBV4	972	880	0.10%	0.013%
61	10.040	2796	2799	2800	rBV3	1129	476	0.05%	0.007%
62	10.159	2823	2836	2852	rBV	270250	432487	49.80%	6.498%
63	10.313	2881	2884	2885	rVV2	1317	669	0.08%	0.010%
64	10.339	2889	2892	2895	rVB4	1149	697	0.08%	0.010%
65	10.390	2903	2908	2909	rBV4	1608	1222	0.14%	0.018%
66	10.796	3031	3034	3039	rBV6	876	750	0.09%	0.011%
67	10.828	3042	3044	3047	rBV4	1325	568	0.07%	0.009%
68	10.889	3060	3063	3064	rVB3	995	462	0.05%	0.007%
69	10.972	3086	3089	3092	rBV4	1282	689	0.08%	0.010%
70	11.152	3143	3145	3146	rBV3	1804	836	0.10%	0.013%
71	11.194	3147	3158	3176	rVV	410059	656267	75.57%	9.861%
72	11.374	3212	3214	3216	rBV3	1774	997	0.11%	0.015%
73	11.477	3244	3246	3248	rBV3	1149	539	0.06%	0.008%
74	11.567	3262	3274	3292	rBV	389045	632030	72.78%	9.497%
75	11.908	3378	3380	3384	rVB6	1117	692	0.08%	0.010%
76	11.940	3388	3390	3391	rBV2	931	444	0.05%	0.007%

Data Path : Z:\voasrv\HPCHEM1\MSVOA\_V\Data\VV042523\  
 Data File : VV030831.D  
 Acq On : 25 Apr 2023 12:53  
 Operator : SY/MD  
 Sample : 02479-18  
 Misc : 5.0mL/MSVOA\_V/WATER  
 ALS Vial : 9 Sample Multiplier: 1

Instrument :  
 MSVOA\_V  
 ClientSampleId :  
 VHBLK001

Integration Parameters: LSCINT.P

Integrator: RTE  
 Smoothing : OFF  
 Sampling : 1  
 Start Thrs : 0.2  
 Stop Thrs : 0

Filtering: 5  
 Min Area: 0 % of largest Peak  
 Max Peaks: 100  
 Peak Location: TOP

If leading or trailing edge < 100 prefer < Baseline drop else tangent >  
 Peak separation: 5

Method : Z:\voasrv\HPCHEM1\MSVOA\_V\Method\SFAMVLM041723WMA.M  
 Title : VOC Analysis

77	11.960	3394	3396	3399	rBV4	1211	905	0.10%	0.014%
78	12.156	3454	3457	3458	rBV3	1361	804	0.09%	0.012%
79	12.509	3565	3567	3570	rBV4	1096	570	0.07%	0.009%
80	12.622	3598	3602	3604	rVB5	1084	674	0.08%	0.010%
81	12.715	3626	3631	3632	rBV4	1380	987	0.11%	0.015%
82	12.992	3713	3717	3718	rBV4	834	600	0.07%	0.009%
83	13.201	3777	3782	3784	rBV5	1753	1923	0.22%	0.029%
84	13.268	3798	3803	3806	rBV7	1208	1218	0.14%	0.018%
85	13.377	3835	3837	3839	rBV3	1312	582	0.07%	0.009%
86	13.516	3874	3880	3883	rBV6	2213	2423	0.28%	0.036%
87	13.551	3888	3891	3892	rBV3	1387	806	0.09%	0.012%
88	13.728	3944	3946	3948	rBV3	914	398	0.05%	0.006%
89	13.840	3979	3981	3989	rVB8	1489	1355	0.16%	0.020%
90	13.876	3989	3992	3998	rBV7	1509	1352	0.16%	0.020%
91	13.905	3998	4001	4005	rBV6	1782	1067	0.12%	0.016%
92	13.963	4017	4019	4022	rBV4	1009	574	0.07%	0.009%
93	14.027	4038	4039	4043	rBV4	645	452	0.05%	0.007%
94	14.049	4043	4046	4050	rBV5	1130	1159	0.13%	0.017%
95	14.088	4057	4058	4061	rBV3	1113	566	0.07%	0.009%
96	14.345	4136	4138	4140	rBV3	1207	559	0.06%	0.008%
97	14.397	4152	4154	4155	rBV2	1361	471	0.05%	0.007%
98	14.442	4165	4168	4170	rBV4	1282	745	0.09%	0.011%
99	14.503	4186	4187	4190	rBV3	1447	708	0.08%	0.011%
100	14.786	4273	4275	4278	rBV3	1241	749	0.09%	0.011%

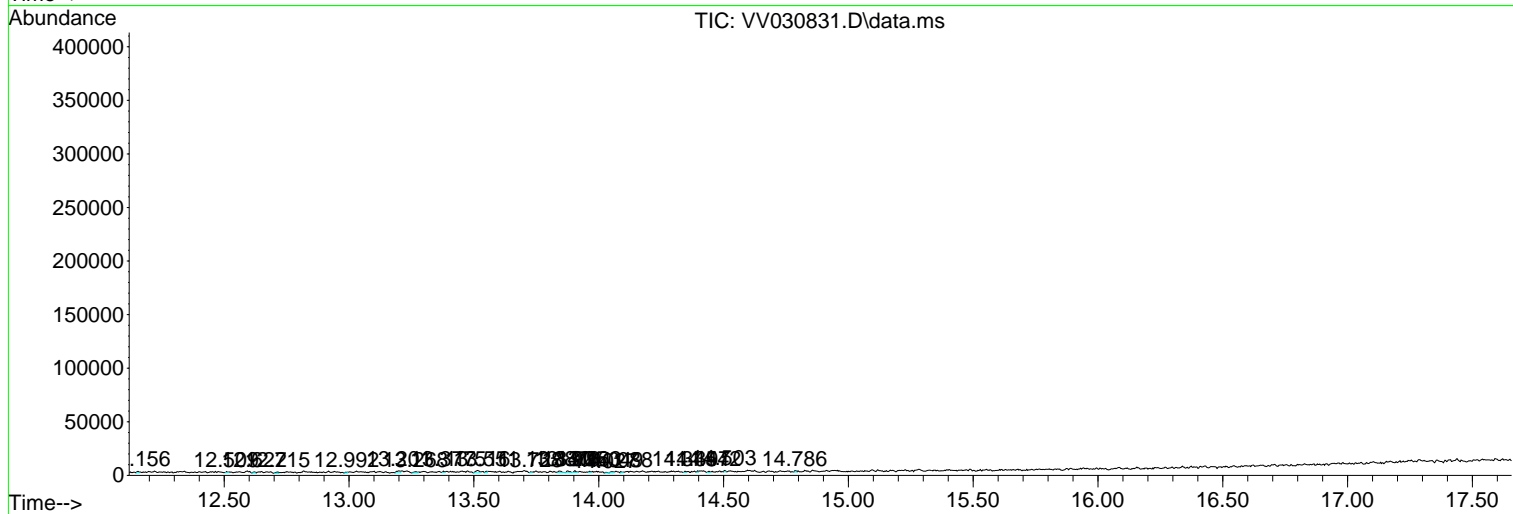
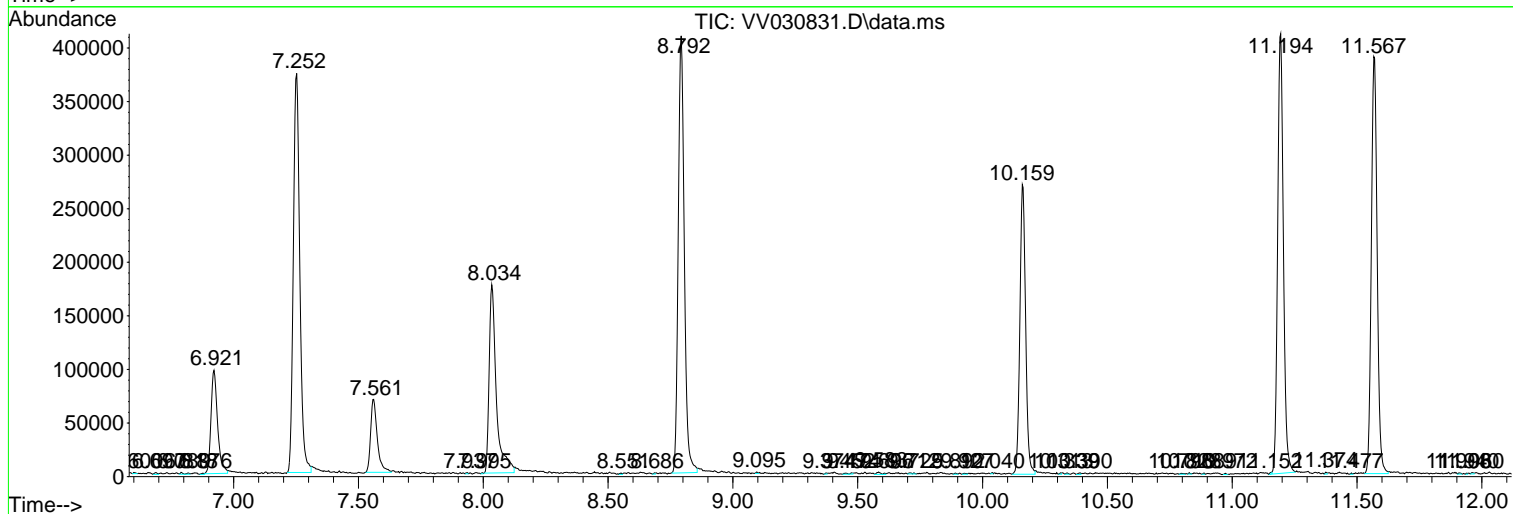
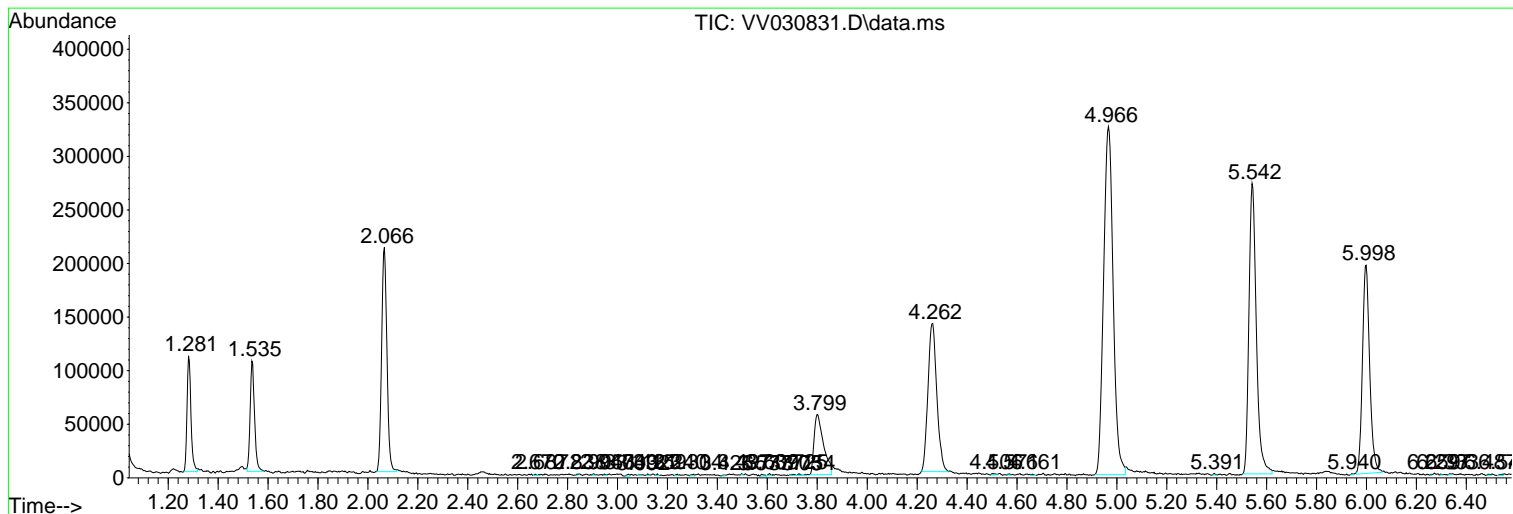
Sum of corrected areas: 6655278

Data Path : Z:\voasrv\HPCHEM1\MSVOA\_V\Data\VV042523\  
 Data File : VV030831.D  
 Acq On : 25 Apr 2023 12:53  
 Operator : SY/MD  
 Sample : 02479-18  
 Misc : 5.0mL/MSVOA\_V/WATER  
 ALS Vial : 9 Sample Multiplier: 1

Instrument :  
 MSVOA\_V  
 ClientSampleId :  
 VHBLK001

Quant Method : Z:\voasrv\HPCHEM1\MSVOA\_V\Method\SFAMVLM041723WMA.M  
 Quant Title : VOC Analysis

TIC Library : C:\Database\NIST20.L  
 TIC Integration Parameters: LSCINT.P



Library Search Compound Report

Data Path : Z:\voasrv\HPCHEM1\MSVOA\_V\Data\VV042523\  
Data File : VV030831.D  
Acq On : 25 Apr 2023 12:53  
Operator : SY/MD  
Sample : 02479-18  
Misc : 5.0mL/MSVOA\_V/WATER  
ALS Vial : 9 Sample Multiplier: 1

Instrument :  
MSVOA\_V  
ClientSampleId :  
VHBLK001

Quant Method : Z:\voasrv\HPCHEM1\MSVOA\_V\Method\SFAMVLM041723WMA.M  
Quant Title : VOC Analysis

TIC Library : C:\Database\NIST20.L  
TIC Integration Parameters: LSCINT.P

No Library Search Compounds Detected

\*\*\*\*\*

Data Path : Z:\voasrv\HPCHEM1\MSVOA\_V\Data\VV042523\  
Data File : VV030831.D  
Acq On : 25 Apr 2023 12:53  
Operator : SY/MD  
Sample : 02479-18  
Misc : 5.0mL/MSVOA\_V/WATER  
ALS Vial : 9 Sample Multiplier: 1

Instrument :  
MSVOA\_V  
ClientSampleId :  
VHBLK001

Quant Method : Z:\voasrv\HPCHEM1\MSVOA\_V\Method\SFAMVLM041723WMA.M  
Quant Title : VOC Analysis

TIC Library : C:\Database\NIST0.L  
TIC Integration Parameters: LSCINT.P

TIC Top Hit name	RT	EstConc	Units	Response	--Internal Standard--			
					#	RT	Resp	Conc

---