

Data Path : Z:\voasrv\HPCHEM1\MSVOA\_V\Data\VV042523\  
 Data File : VV030837.D  
 Acq On : 25 Apr 2023 15:17  
 Operator : SY/MD  
 Sample : 02418-17ME  
 Misc : 5.00g/5.0mL/100uL/5.0mL/MSVOA\_V/MEOH  
 ALS Vial : 15 Sample Multiplier: 1

Instrument :  
 MSVOA\_V  
 ClientSampleId :  
 EW901ME

Integration Parameters: LSCINT.P

Integrator: RTE  
 Smoothing : OFF Filtering: 5  
 Sampling : 1 Min Area: 0 % of largest Peak  
 Start Thrs: 0.2 Max Peaks: 100  
 Stop Thrs : 0 Peak Location: TOP

If leading or trailing edge < 100 prefer < Baseline drop else tangent >  
 Peak separation: 5

Method : Z:\voasrv\HPCHEM1\MSVOA\_V\Method\SFAMVLM041723WMA.M  
 Title : VOC Analysis

Signal : TIC: VV030837.D\data.ms

peak #	R.T. min	first scan	max scan	last scan	PK TY	peak height	corr. area	corr. % max.	% of total
1	1.281	69	75	90	rVB	103092	113154	13.24%	1.724%
2	1.535	148	154	165	rVB	94731	110131	12.88%	1.678%
3	2.066	310	319	330	rBV	204077	292265	34.19%	4.453%
4	3.018	613	615	619	rBV4	662	482	0.06%	0.007%
5	3.056	625	627	630	rBV3	895	460	0.05%	0.007%
6	3.072	630	632	634	rVB3	1049	390	0.05%	0.006%
7	3.275	693	695	699	rBV5	1003	824	0.10%	0.013%
8	3.294	699	701	705	rVB4	1421	937	0.11%	0.014%
9	3.317	705	708	709	rBV3	1274	593	0.07%	0.009%
10	3.349	716	718	719	rBV	663	319	0.04%	0.005%
11	3.371	721	725	730	rBV5	1549	2098	0.25%	0.032%
12	3.580	788	790	793	rBV4	1501	733	0.09%	0.011%
13	3.706	825	829	832	rBV3	1144	859	0.10%	0.013%
14	3.760	844	846	848	rBV3	1374	707	0.08%	0.011%
15	3.799	848	858	884	rBV	56615	158934	18.59%	2.421%
16	4.085	945	947	950	rVB4	1776	1009	0.12%	0.015%
17	4.259	984	1001	1023	rBV	135984	352207	41.21%	5.366%
18	4.574	1094	1099	1103	rBV5	1666	1750	0.20%	0.027%
19	4.680	1128	1132	1133	rBV3	768	437	0.05%	0.007%
20	4.899	1195	1200	1203	rBV5	1716	1935	0.23%	0.029%
21	4.966	1203	1221	1251	rVV2	318554	854765	100.00%	13.023%
22	5.194	1289	1292	1297	rBV6	1614	1665	0.19%	0.025%
23	5.461	1372	1375	1377	rBV4	1574	1123	0.13%	0.017%
24	5.493	1382	1385	1387	rVB4	978	504	0.06%	0.008%
25	5.542	1387	1400	1423	rBV	264282	557203	65.19%	8.489%
26	5.998	1530	1542	1567	rVB	188259	383724	44.89%	5.846%
27	6.255	1616	1622	1623	rBV6	1733	1245	0.15%	0.019%
28	6.442	1678	1680	1681	rBV2	926	302	0.04%	0.005%
29	6.487	1689	1694	1697	rBV6	1602	1713	0.20%	0.026%
30	6.696	1757	1759	1761	rBV3	1656	721	0.08%	0.011%
31	6.744	1772	1774	1776	rVB3	1005	424	0.05%	0.006%
32	6.760	1776	1779	1780	rBV3	1079	610	0.07%	0.009%
33	6.921	1815	1829	1849	rBV2	94942	187774	21.97%	2.861%
34	7.252	1919	1932	1958	rBV	365454	651958	76.27%	9.933%
35	7.561	2019	2028	2049	rBV	70341	125041	14.63%	1.905%
36	7.715	2074	2076	2078	rBV3	1121	476	0.06%	0.007%

Data Path : Z:\voasrv\HPCHEM1\MSVOA\_V\Data\VW042523\  
 Data File : VW030837.D  
 Acq On : 25 Apr 2023 15:17  
 Operator : SY/MD  
 Sample : 02418-17ME  
 Misc : 5.00g/5.0mL/100uL/5.0mL/MSVOA\_V/MEOH  
 ALS Vial : 15 Sample Multiplier: 1

Instrument :  
 MSVOA\_V  
 ClientSampleId :  
 EW901ME

Integration Parameters: LSCINT.P

Integrator: RTE  
 Smoothing : OFF  
 Sampling : 1  
 Start Thrs : 0.2  
 Stop Thrs : 0

Filtering: 5  
 Min Area: 0 % of largest Peak  
 Max Peaks: 100  
 Peak Location: TOP

If leading or trailing edge < 100 prefer < Baseline drop else tangent >  
 Peak separation: 5

Method : Z:\voasrv\HPCHEM1\MSVOA\_V\Method\SFAMVLM041723WMA.M  
 Title : VOC Analysis

37	7.863	2119	2122	2126	rBV5	1736	1677	0.20%	0.026%
38	7.924	2139	2141	2143	rVB2	1271	562	0.07%	0.009%
39	7.947	2143	2148	2151	rBV6	1592	1611	0.19%	0.025%
40	8.034	2166	2175	2193	rBV	172206	325140	38.04%	4.954%
41	8.599	2350	2351	2353	rBV2	1269	458	0.05%	0.007%
42	8.689	2377	2379	2381	rBV3	1124	616	0.07%	0.009%
43	8.792	2399	2411	2435	rBV	418495	691957	80.95%	10.543%
44	9.017	2479	2481	2483	rBV2	1534	807	0.09%	0.012%
45	9.088	2500	2503	2507	rBV5	1290	1386	0.16%	0.021%
46	9.326	2576	2577	2580	rBV3	816	478	0.06%	0.007%
47	9.358	2583	2587	2590	rBV5	1482	1155	0.14%	0.018%
48	9.423	2603	2607	2609	rBV4	1854	1160	0.14%	0.018%
49	9.635	2668	2673	2675	rBV5	1095	1035	0.12%	0.016%
50	9.664	2679	2682	2683	rBV2	1317	767	0.09%	0.012%
51	9.699	2692	2693	2696	rBV2	1030	478	0.06%	0.007%
52	9.715	2696	2698	2700	rBV3	1180	541	0.06%	0.008%
53	9.979	2777	2780	2781	rBV2	1250	576	0.07%	0.009%
54	10.011	2787	2790	2794	rBV4	1100	1042	0.12%	0.016%
55	10.040	2797	2799	2803	rVV3	1396	970	0.11%	0.015%
56	10.159	2825	2836	2857	rBV	259747	416452	48.72%	6.345%
57	10.496	2939	2941	2943	rBV3	998	435	0.05%	0.007%
58	10.525	2947	2950	2953	rBV6	1103	994	0.12%	0.015%
59	10.583	2967	2968	2969	rBV	903	297	0.03%	0.005%
60	10.821	3041	3042	3047	rVV4	1292	730	0.09%	0.011%
61	10.850	3049	3051	3053	rBV3	623	316	0.04%	0.005%
62	10.895	3063	3065	3067	rBV3	792	405	0.05%	0.006%
63	10.940	3077	3079	3084	rBV5	1222	1063	0.12%	0.016%
64	11.024	3104	3105	3107	rBV2	1086	333	0.04%	0.005%
65	11.136	3136	3140	3142	rBV4	1287	910	0.11%	0.014%
66	11.194	3146	3158	3180	rVV	407927	654717	76.60%	9.975%
67	11.394	3218	3220	3222	rBV3	1550	819	0.10%	0.012%
68	11.455	3237	3239	3242	rBV3	1801	1055	0.12%	0.016%
69	11.567	3263	3274	3290	rBV	390528	617221	72.21%	9.404%
70	11.783	3338	3341	3343	rVB3	1793	1023	0.12%	0.016%
71	11.869	3366	3368	3373	rVB5	1607	1202	0.14%	0.018%
72	11.895	3373	3376	3378	rBV2	1651	1035	0.12%	0.016%
73	12.001	3406	3409	3411	rVB3	981	508	0.06%	0.008%
74	12.014	3411	3413	3414	rBV2	693	245	0.03%	0.004%
75	12.062	3426	3428	3431	rBV4	1113	879	0.10%	0.013%
76	12.233	3477	3481	3484	rBV5	1026	852	0.10%	0.013%

Data Path : Z:\voasrv\HPCHEM1\MSVOA\_V\Data\VW042523\  
 Data File : VW030837.D  
 Acq On : 25 Apr 2023 15:17  
 Operator : SY/MD  
 Sample : 02418-17ME  
 Misc : 5.00g/5.0mL/100uL/5.0mL/MSVOA\_V/MEOH  
 ALS Vial : 15 Sample Multiplier: 1

Instrument :  
 MSVOA\_V  
 ClientSampleId :  
 EW901ME

Integration Parameters: LSCINT.P

Integrator: RTE  
 Smoothing : OFF Filtering: 5  
 Sampling : 1 Min Area: 0 % of largest Peak  
 Start Thrs: 0.2 Max Peaks: 100  
 Stop Thrs : 0 Peak Location: TOP

If leading or trailing edge < 100 prefer < Baseline drop else tangent >  
 Peak separation: 5

Method : Z:\voasrv\HPCHEM1\MSVOA\_V\Method\SFAMVLM041723WMA.M  
 Title : VOC Analysis

77	12.252	3484	3487	3489	rBV4	1145	782	0.09%	0.012%
78	12.313	3504	3506	3509	rBV3	1077	762	0.09%	0.012%
79	12.365	3519	3522	3527	rBV7	1053	871	0.10%	0.013%
80	12.535	3573	3575	3580	rBV6	1195	714	0.08%	0.011%
81	12.554	3580	3581	3584	rBV3	689	359	0.04%	0.005%
82	12.738	3636	3638	3639	rBV2	1021	501	0.06%	0.008%
83	12.786	3650	3653	3656	rBV5	1728	1201	0.14%	0.018%
84	12.873	3677	3680	3682	rBV4	1139	755	0.09%	0.012%
85	13.046	3732	3734	3737	rBV3	1189	685	0.08%	0.010%
86	13.072	3740	3742	3744	rVB2	1105	539	0.06%	0.008%
87	13.091	3746	3748	3751	rBV4	893	397	0.05%	0.006%
88	13.110	3752	3754	3757	rBV4	934	457	0.05%	0.007%
89	13.316	3814	3818	3822	rBV6	1568	1641	0.19%	0.025%
90	13.345	3825	3827	3829	rBV3	1494	671	0.08%	0.010%
91	13.390	3838	3841	3846	rVB7	1921	1552	0.18%	0.024%
92	13.413	3846	3848	3849	rBV	848	435	0.05%	0.007%
93	13.795	3965	3967	3968	rBV2	803	284	0.03%	0.004%
94	13.873	3989	3991	3995	rBV4	1516	803	0.09%	0.012%
95	13.892	3995	3997	4000	rBV4	1021	385	0.05%	0.006%
96	13.914	4002	4004	4006	rBV3	1389	742	0.09%	0.011%
97	14.030	4038	4040	4043	rBV4	1494	817	0.10%	0.012%
98	14.467	4170	4176	4179	rBV6	2053	2022	0.24%	0.031%
99	14.612	4219	4221	4227	rVB5	1594	1373	0.16%	0.021%
100	15.126	4378	4381	4384	rBV5	1734	1365	0.16%	0.021%

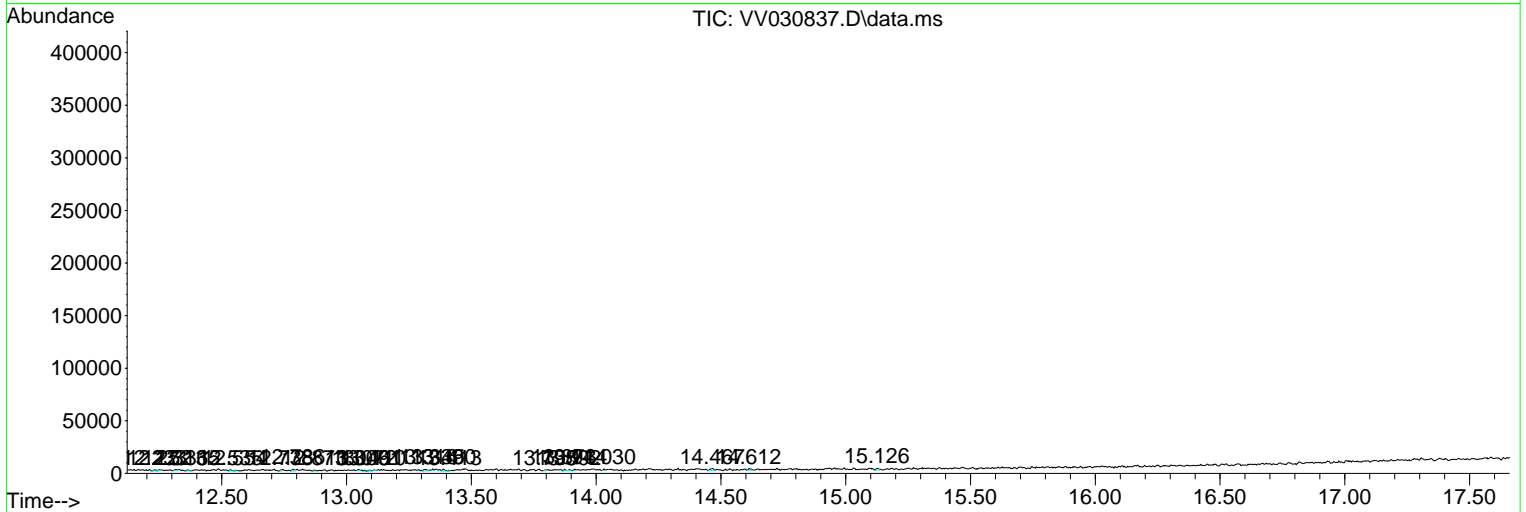
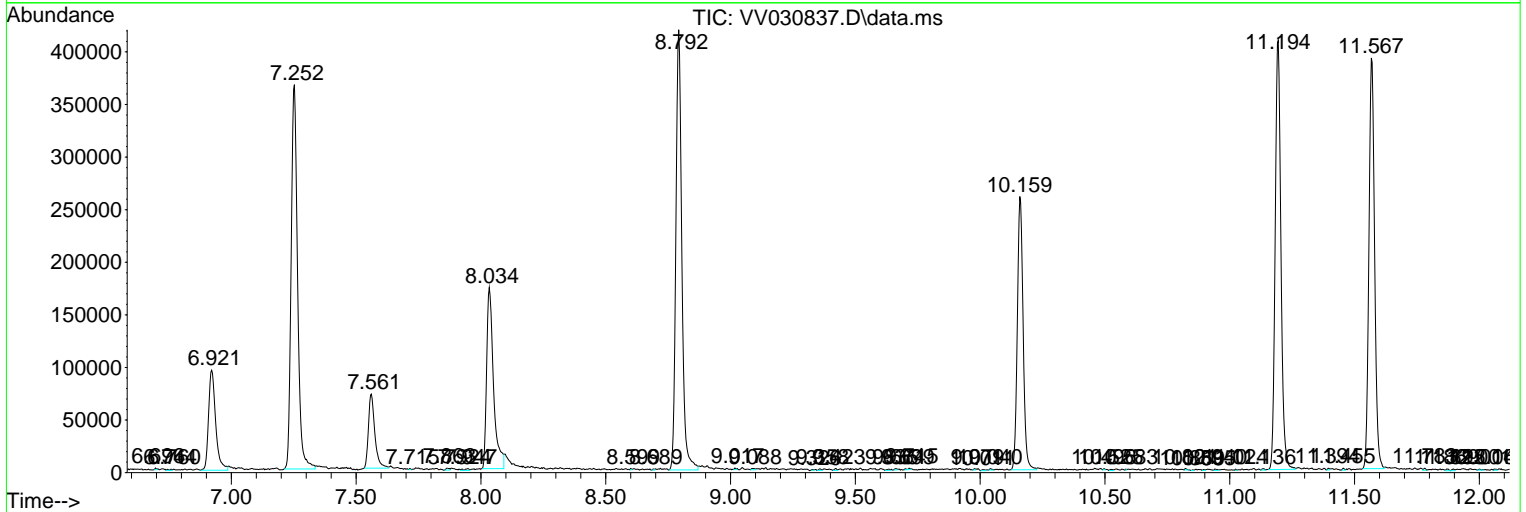
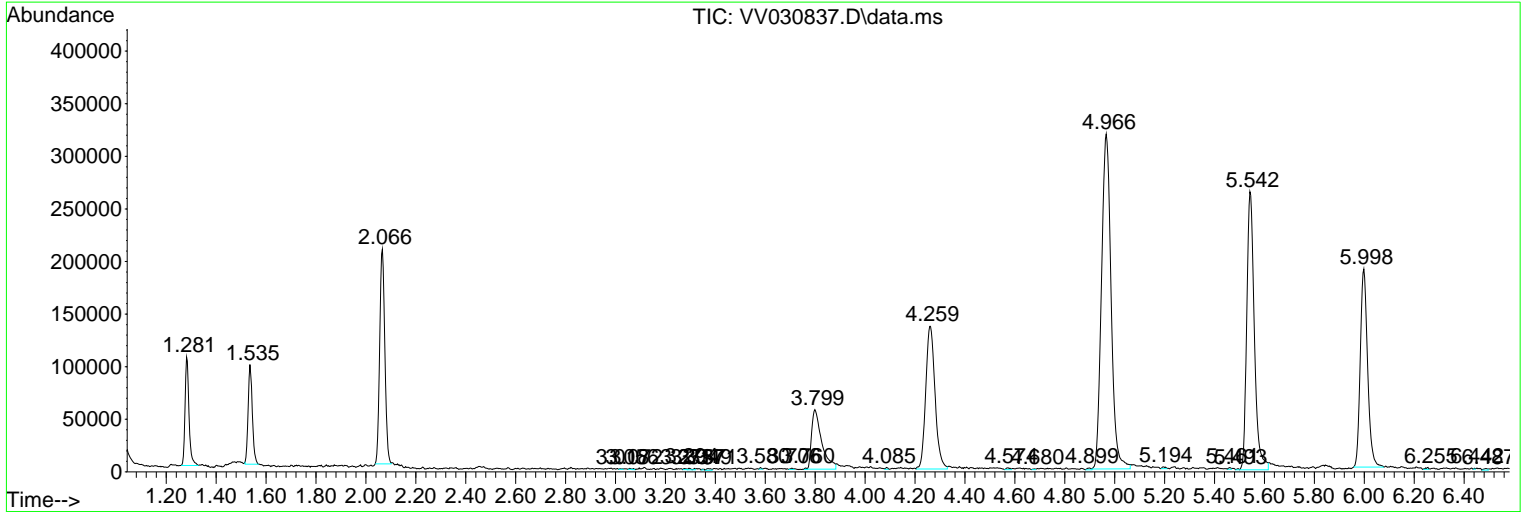
Sum of corrected areas: 6563492

Data Path : Z:\voasrv\HPCHEM1\MSVOA\_V\Data\VV042523\  
 Data File : VV030837.D  
 Acq On : 25 Apr 2023 15:17  
 Operator : SY/MD  
 Sample : 02418-17ME  
 Misc : 5.00g/5.0mL/100uL/5.0mL/MSVOA\_V/MEOH  
 ALS Vial : 15 Sample Multiplier: 1

Instrument :  
 MSVOA\_V  
 ClientSampleId :  
 EW901ME

Quant Method : Z:\voasrv\HPCHEM1\MSVOA\_V\Method\SFAMVLM041723WMA.M  
 Quant Title : VOC Analysis

TIC Library : C:\Database\NIST20.L  
 TIC Integration Parameters: LSCINT.P



Library Search Compound Report

Data Path : Z:\voasrv\HPCHEM1\MSVOA\_V\Data\VV042523\  
Data File : VV030837.D  
Acq On : 25 Apr 2023 15:17  
Operator : SY/MD  
Sample : 02418-17ME  
Misc : 5.00g/5.0mL/100uL/5.0mL/MSVOA\_V/MEOH  
ALS Vial : 15 Sample Multiplier: 1

Instrument :  
MSVOA\_V  
ClientSampleId :  
EW901ME

Quant Method : Z:\voasrv\HPCHEM1\MSVOA\_V\Method\SFAMVLM041723WMA.M  
Quant Title : VOC Analysis

TIC Library : C:\Database\NIST20.L  
TIC Integration Parameters: LSCINT.P

No Library Search Compounds Detected

\*\*\*\*\*

Data Path : Z:\voasrv\HPCHEM1\MSVOA\_V\Data\VV042523\  
Data File : VV030837.D  
Acq On : 25 Apr 2023 15:17  
Operator : SY/MD  
Sample : 02418-17ME  
Misc : 5.00g/5.0mL/100uL/5.0mL/MSVOA\_V/MEOH  
ALS Vial : 15 Sample Multiplier: 1

Instrument :  
MSVOA\_V  
ClientSampleId :  
EW901ME

Quant Method : Z:\voasrv\HPCHEM1\MSVOA\_V\Method\SFAMVLM041723WMA.M  
Quant Title : VOC Analysis

TIC Library : C:\Database\NIST0.L  
TIC Integration Parameters: LSCINT.P

TIC Top Hit name	RT	EstConc	Units	Response	--Internal Standard--			
					#	RT	Resp	Conc

---