

Data Path : Z:\voasrv\HPCHEM1\MSVOA_V\Data\VW042624\
 Data File : VW035455.D
 Acq On : 27 Apr 2024 03:11
 Operator : SY/MD
 Sample : P2279-15 100X
 Misc : 5.0mL/MSVOA_V/WATER
 ALS Vial : 44 Sample Multiplier: 1

Instrument :
 MSVOA_V
 ClientSampleId :
 CORR8

Integration Parameters: LSCINT.P

Integrator: RTE
 Smoothing : OFF
 Sampling : 1
 Start Thrs : 0.2
 Stop Thrs : 0

Filtering: 5
 Min Area: 0 % of largest Peak
 Max Peaks: 100
 Peak Location: TOP

If leading or trailing edge < 100 prefer < Baseline drop else tangent >
 Peak separation: 5

Method : Z:\voasrv\HPCHEM1\MSVOA_V\Method\SFAMVLM042624WMA.M
 Title : VOC Analysis

Signal : TIC: VW035455.D\data.ms

peak #	R.T. min	first scan	max scan	last scan	PK TY	peak height	corr. area	corr. % max.	% of total
1	1.278	67	74	92	rVB	237316	258475	15.13%	2.070%
2	1.529	146	152	165	rVB	198071	215821	12.64%	1.729%
3	2.053	306	315	349	rVB	375997	568346	33.28%	4.553%
4	2.555	458	471	483	rBV2	12131	26525	1.55%	0.212%
5	2.796	544	546	549	rBV	234	146	0.01%	0.001%
6	2.870	567	569	572	rBV	212	153	0.01%	0.001%
7	2.886	572	574	578	rVB2	280	148	0.01%	0.001%
8	2.970	597	600	602	rVV	273	166	0.01%	0.001%
9	3.063	626	629	632	rBV	288	198	0.01%	0.002%
10	3.082	632	635	640	rVB2	278	214	0.01%	0.002%
11	3.124	645	648	652	rBV2	157	105	0.01%	0.001%
12	3.163	656	660	661	rBV	140	107	0.01%	0.001%
13	3.208	670	674	677	rBV	152	139	0.01%	0.001%
14	3.227	677	680	686	rVB3	284	285	0.02%	0.002%
15	3.298	700	702	707	rVB2	200	122	0.01%	0.001%
16	3.339	711	715	717	rBV	198	151	0.01%	0.001%
17	3.413	737	738	742	rBV2	233	152	0.01%	0.001%
18	3.603	794	797	800	rBV2	173	144	0.01%	0.001%
19	3.642	803	809	812	rBV2	191	131	0.01%	0.001%
20	3.799	849	858	902	rBV	116668	406597	23.81%	3.257%
21	4.246	982	997	1028	rBV	267999	690818	40.45%	5.534%
22	4.638	1117	1119	1120	rBV2	319	115	0.01%	0.001%
23	4.670	1127	1129	1134	rVB2	486	311	0.02%	0.002%
24	4.696	1134	1137	1140	rBV3	262	199	0.01%	0.002%
25	4.953	1201	1217	1252	rBV2	642358	1707907	100.00%	13.681%
26	5.330	1331	1334	1336	rBV2	319	144	0.01%	0.001%
27	5.339	1336	1337	1339	rBV2	348	170	0.01%	0.001%
28	5.378	1346	1349	1356	rVB2	567	656	0.04%	0.005%
29	5.410	1356	1359	1360	rBV	345	221	0.01%	0.002%
30	5.490	1381	1384	1386	rBV2	370	268	0.02%	0.002%
31	5.532	1386	1397	1432	rBV	500310	1049585	61.45%	8.407%
32	5.834	1480	1491	1505	rBV3	10313	23993	1.40%	0.192%
33	5.986	1524	1538	1564	rBV	371629	780056	45.67%	6.248%
34	6.314	1638	1640	1642	rBV2	290	160	0.01%	0.001%
35	6.346	1646	1650	1651	rBV	239	117	0.01%	0.001%
36	6.400	1665	1667	1671	rVB	415	208	0.01%	0.002%

Data Path : Z:\voasrv\HPCHEM1\MSVOA_V\Data\VW042624\
 Data File : VW035455.D
 Acq On : 27 Apr 2024 03:11
 Operator : SY/MD
 Sample : P2279-15 100X
 Misc : 5.0mL/MSVOA_V/WATER
 ALS Vial : 44 Sample Multiplier: 1

Instrument :
 MSVOA_V
 ClientSampleId :
 CORR8

Integration Parameters: LSCINT.P

Integrator: RTE
 Smoothing : OFF
 Sampling : 1
 Start Thrs: 0.2
 Stop Thrs : 0

Filtering: 5
 Min Area: 0 % of largest Peak
 Max Peaks: 100
 Peak Location: TOP

If leading or trailing edge < 100 prefer < Baseline drop else tangent >
 Peak separation: 5

Method : Z:\voasrv\HPCHEM1\MSVOA_V\Method\SFAMVLM042624WMA.M
 Title : VOC Analysis

37	6.426	1671	1675	1678	rBV2	246	204	0.01%	0.002%
38	6.461	1683	1686	1690	rVB2	204	184	0.01%	0.001%
39	6.500	1696	1698	1701	rVB	289	179	0.01%	0.001%
40	6.651	1744	1745	1750	rVB2	228	127	0.01%	0.001%
41	6.735	1768	1771	1774	rVV2	533	319	0.02%	0.003%
42	6.783	1783	1786	1790	rVV	235	193	0.01%	0.002%
43	6.809	1792	1794	1797	rVB2	246	117	0.01%	0.001%
44	6.876	1808	1815	1816	rBV	125	161	0.01%	0.001%
45	6.912	1816	1826	1859	rBV	176060	346147	20.27%	2.773%
46	7.198	1912	1915	1917	rBV2	254	133	0.01%	0.001%
47	7.240	1918	1928	1967	rBV	663420	1192903	69.85%	9.555%
48	7.555	2016	2026	2055	rBV	120932	235537	13.79%	1.887%
49	7.867	2120	2123	2124	rBV	261	120	0.01%	0.001%
50	7.899	2128	2133	2137	rBV3	398	429	0.03%	0.003%
51	7.982	2158	2159	2163	rVB2	355	245	0.01%	0.002%
52	8.034	2165	2175	2230	rBV3	295858	803752	47.06%	6.438%
53	8.519	2323	2326	2329	rBV2	486	328	0.02%	0.003%
54	8.555	2332	2337	2341	rBV3	631	765	0.04%	0.006%
55	8.612	2353	2355	2357	rBV2	391	151	0.01%	0.001%
56	8.657	2366	2369	2370	rBV	191	105	0.01%	0.001%
57	8.702	2381	2383	2385	rBV	442	231	0.01%	0.002%
58	8.783	2397	2408	2449	rBV	755205	1260481	73.80%	10.097%
59	9.063	2493	2495	2496	rBV	275	104	0.01%	0.001%
60	9.117	2511	2512	2518	rVB	488	325	0.02%	0.003%
61	9.143	2518	2520	2521	rBV	267	127	0.01%	0.001%
62	9.188	2532	2534	2535	rBV	280	128	0.01%	0.001%
63	9.198	2535	2537	2541	rVV	628	450	0.03%	0.004%
64	9.230	2544	2547	2553	rBV2	326	271	0.02%	0.002%
65	9.436	2607	2611	2615	rBV2	260	273	0.02%	0.002%
66	9.500	2627	2631	2633	rVV2	195	152	0.01%	0.001%
67	9.583	2653	2657	2664	rVV	399	336	0.02%	0.003%
68	9.651	2675	2678	2683	rBV	212	153	0.01%	0.001%
69	9.825	2728	2732	2734	rBV	148	131	0.01%	0.001%
70	9.866	2741	2745	2747	rBV	217	162	0.01%	0.001%
71	9.924	2761	2763	2767	rBV	249	122	0.01%	0.001%
72	9.982	2778	2781	2786	rVB2	312	211	0.01%	0.002%
73	10.011	2786	2790	2792	rBV	218	175	0.01%	0.001%
74	10.153	2821	2834	2863	rBV	552152	904623	52.97%	7.246%
75	10.410	2911	2914	2915	rBV	264	142	0.01%	0.001%
76	10.545	2953	2956	2959	rVB	319	152	0.01%	0.001%

Data Path : Z:\voasrv\HPCHEM1\MSVOA_V\Data\VW042624\
 Data File : VW035455.D
 Acq On : 27 Apr 2024 03:11
 Operator : SY/MD
 Sample : P2279-15 100X
 Misc : 5.0mL/MSVOA_V/WATER
 ALS Vial : 44 Sample Multiplier: 1

Instrument :
 MSVOA_V
 ClientSampleId :
 CORR8

Integration Parameters: LSCINT.P

Integrator: RTE
 Smoothing : OFF Filtering: 5
 Sampling : 1 Min Area: 0 % of largest Peak
 Start Thrs: 0.2 Max Peaks: 100
 Stop Thrs : 0 Peak Location: TOP

If leading or trailing edge < 100 prefer < Baseline drop else tangent >
 Peak separation: 5

Method : Z:\voasrv\HPCHEM1\MSVOA_V\Method\SFAMVLM042624WMA.M
 Title : VOC Analysis

77	10.622	2975	2980	2981	rBV	334	233	0.01%	0.002%
78	10.789	3027	3032	3038	rVB	350	328	0.02%	0.003%
79	10.908	3066	3069	3072	rBV2	211	182	0.01%	0.001%
80	10.979	3088	3091	3093	rBV2	240	156	0.01%	0.001%
81	11.063	3114	3117	3121	rBV2	198	180	0.01%	0.001%
82	11.130	3136	3138	3139	rBV	354	166	0.01%	0.001%
83	11.185	3144	3155	3192	rVV	619016	999854	58.54%	8.009%
84	11.558	3260	3271	3292	rBV	619575	994811	58.25%	7.969%
85	11.796	3342	3345	3349	rBV3	320	265	0.02%	0.002%
86	11.905	3377	3379	3380	rBV3	375	150	0.01%	0.001%
87	11.960	3393	3396	3399	rBV3	451	275	0.02%	0.002%
88	12.021	3413	3415	3417	rBV3	281	133	0.01%	0.001%
89	12.104	3439	3441	3444	rVB	264	120	0.01%	0.001%
90	12.259	3486	3489	3490	rBV	213	108	0.01%	0.001%
91	12.407	3530	3535	3539	rBV	308	351	0.02%	0.003%
92	12.509	3565	3567	3570	rVB	235	120	0.01%	0.001%
93	12.628	3600	3604	3607	rBV2	412	345	0.02%	0.003%
94	12.741	3637	3639	3642	rBV	268	126	0.01%	0.001%
95	12.857	3673	3675	3679	rBV2	375	202	0.01%	0.002%
96	13.159	3767	3769	3771	rBV	433	201	0.01%	0.002%
97	13.178	3771	3775	3780	rBV4	448	440	0.03%	0.004%
98	13.210	3782	3785	3791	rBV3	614	681	0.04%	0.005%
99	13.262	3797	3801	3805	rBV3	394	376	0.02%	0.003%
100	13.400	3842	3844	3849	rVB3	532	357	0.02%	0.003%

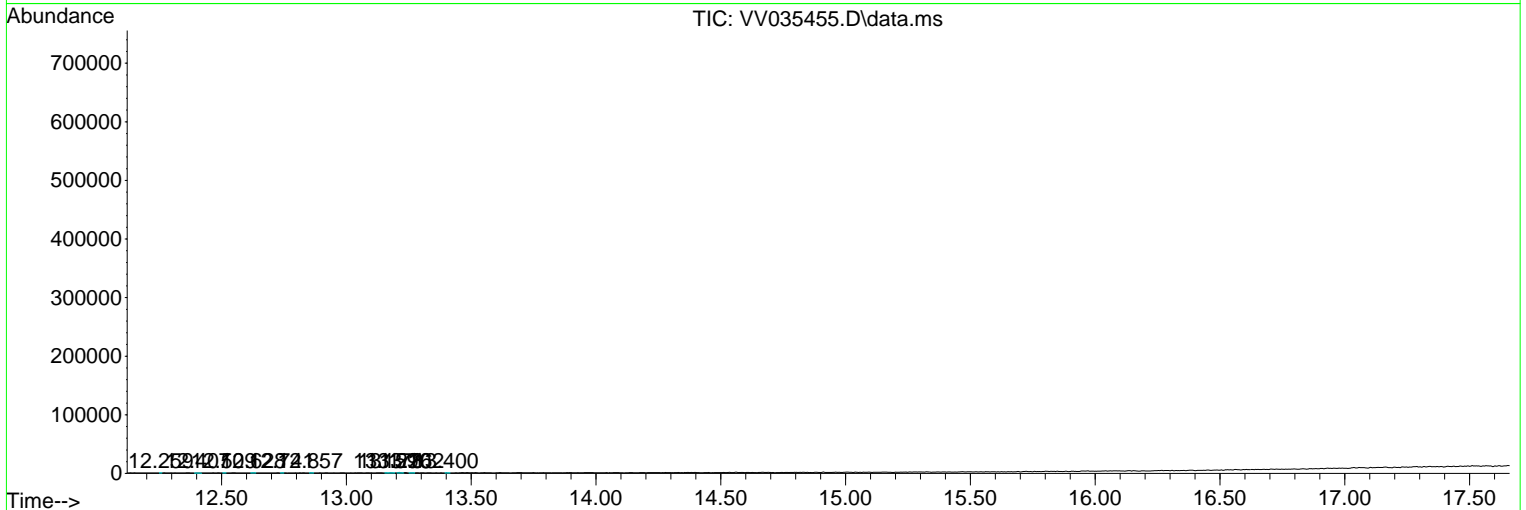
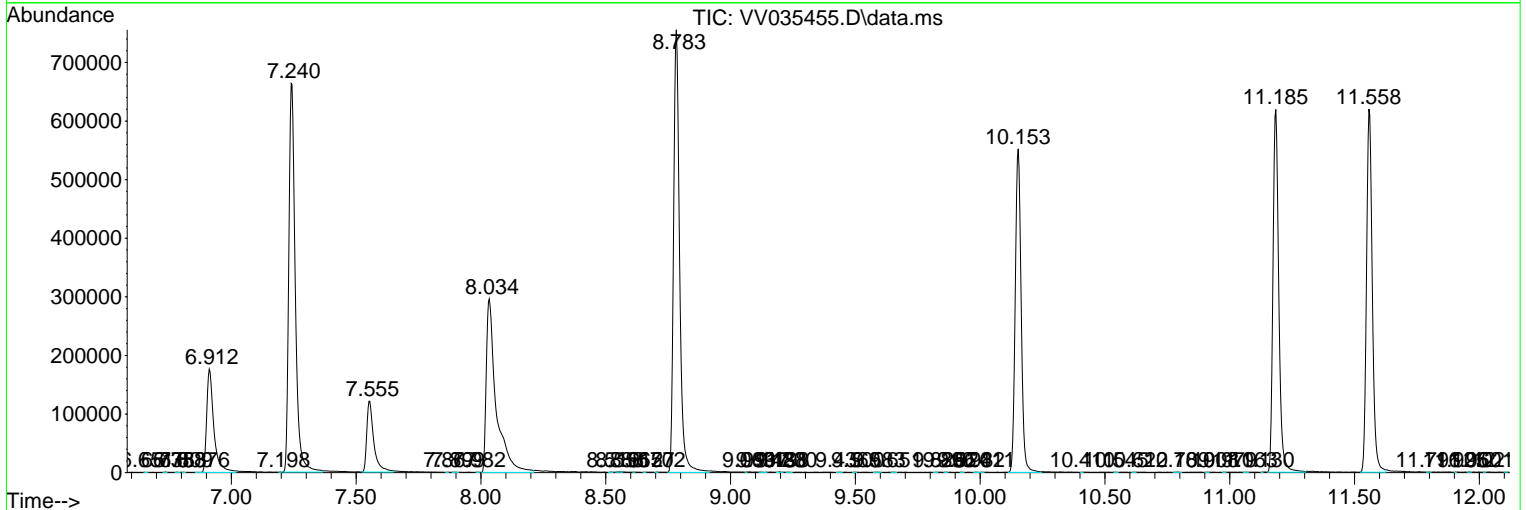
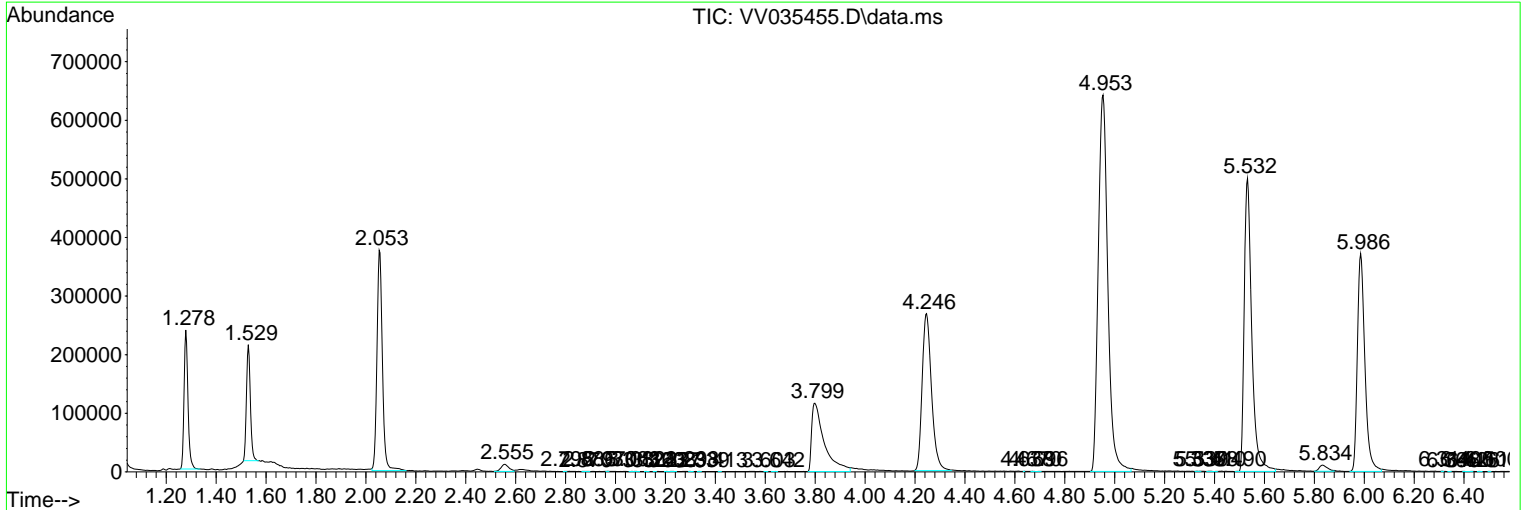
Sum of corrected areas: 12484061

Data Path : Z:\voasrv\HPCHEM1\MSVOA_V\Data\VV042624\
 Data File : VV035455.D
 Acq On : 27 Apr 2024 03:11
 Operator : SY/MD
 Sample : P2279-15 100X
 Misc : 5.0mL/MSVOA_V/WATER
 ALS Vial : 44 Sample Multiplier: 1

Instrument :
 MSVOA_V
ClientSampleId :
 CORR8

Quant Method : Z:\voasrv\HPCHEM1\MSVOA_V\Method\SFAMVLM042624WMA.M
 Quant Title : VOC Analysis

TIC Library : C:\Database\NIST20.L
 TIC Integration Parameters: LSCINT.P



Library Search Compound Report

Data Path : Z:\voasrv\HPCHEM1\MSVOA_V\Data\VV042624\
Data File : VV035455.D
Acq On : 27 Apr 2024 03:11
Operator : SY/MD
Sample : P2279-15 100X
Misc : 5.0mL/MSVOA_V/WATER
ALS Vial : 44 Sample Multiplier: 1

Instrument :
MSVOA_V
ClientSampleId :
CORR8

Quant Method : Z:\voasrv\HPCHEM1\MSVOA_V\Method\SFAMVLM042624WMA.M
Quant Title : VOC Analysis

TIC Library : C:\Database\NIST20.L
TIC Integration Parameters: LSCINT.P

No Library Search Compounds Detected

Data Path : Z:\voasrv\HPCHEM1\MSVOA_V\Data\VV042624\
Data File : VV035455.D
Acq On : 27 Apr 2024 03:11
Operator : SY/MD
Sample : P2279-15 100X
Misc : 5.0mL/MSVOA_V/WATER
ALS Vial : 44 Sample Multiplier: 1

Instrument :
MSVOA_V
ClientSampleId :
C0RR8

Quant Method : Z:\voasrv\HPCHEM1\MSVOA_V\Method\SFAMVLM042624WMA.M
Quant Title : VOC Analysis

TIC Library : C:\Database\NIST0.L
TIC Integration Parameters: LSCINT.P

TIC Top Hit name	RT	EstConc	Units	Response	--Internal Standard--			
					#	RT	Resp	Conc
