

Data Path : Z:\voasrv\HPCHEM1\MSVOA V\Data\VV042920\
 Data File : VV015788.D
 Acq On : 29 Apr 2020 13:29
 Operator : SY/MD
 Sample : L2410-02
 Misc : 25.0mL/MSVOA V/WATER
 ALS Vial : 9 Sample Multiplier: 1

Instrument :
 MSVOA_V
 ClientSampleId :
 DBFE0

Integration Parameters: rteint.p
 Integrator: RTE
 Smoothing : ON
 Sampling : 1
 Start Thrs: 0.1
 Stop Thrs : 0

Filtering: 5
 Min Area: 3 % of largest Peak
 Max Peaks: 100
 Peak Location: TOP

If leading or trailing edge < 100 prefer < Baseline drop else tangent >
 Peak separation: 5

Method : Z:\VOASRV\HPCHEM1\MSVOA_V\METHOD\SOMVTR042220WMA.M
 Title : TRACE VOA SOM01.0

Signal : TIC

peak #	R.T. min	first scan	max scan	last scan	PK TY	peak height	corr. area	corr. % max.	% of total
1	1.216	34	39	43	rBV	22418	19405	1.27%	0.105%
2	1.248	43	49	61	rVV	71113	78452	5.13%	0.423%
3	1.312	62	69	81	rVB	68128	73175	4.79%	0.395%
4	1.528	129	136	144	rVV	56552	63852	4.18%	0.345%
5	1.573	144	150	160	rVB	54536	64330	4.21%	0.347%
6	1.762	199	209	226	rVB	229134	303119	19.82%	1.636%
7	2.126	309	322	331	rBV3	182395	314890	20.59%	1.700%
8	2.177	331	338	359	rVB	108622	176894	11.57%	0.955%
9	2.306	368	378	394	rBV	123378	184379	12.06%	0.995%
10	2.521	433	445	464	rBV	62286	106082	6.94%	0.573%
11	2.785	512	527	550	rBV	216063	450391	29.46%	2.431%
12	3.209	640	659	681	rBV	174916	369745	24.18%	1.996%
13	3.904	863	875	888	rBV2	59383	155511	10.17%	0.839%
14	3.981	889	899	931	rVB	167949	445886	29.16%	2.407%
15	4.377	1005	1022	1047	rBV2	67293	184578	12.07%	0.996%
16	4.634	1084	1102	1112	rBV	192571	473458	30.97%	2.556%
17	4.704	1112	1124	1152	rVB	372031	919086	60.11%	4.961%
18	5.074	1220	1239	1253	rBV2	169962	419501	27.44%	2.265%
19	5.155	1254	1264	1284	rVB	102542	221857	14.51%	1.198%
20	5.640	1402	1415	1443	rBV	173353	352780	23.07%	1.904%
21	5.939	1493	1508	1537	rBV	171132	337732	22.09%	1.823%
22	6.093	1542	1556	1564	rBV2	99910	195509	12.79%	1.055%
23	6.155	1565	1575	1585	rBV	260312	484934	31.72%	2.618%
24	7.010	1830	1841	1864	rBV	47493	87054	5.69%	0.470%
25	7.338	1929	1943	1955	rBV	202599	351125	22.96%	1.895%
26	7.409	1955	1965	1992	rVB	545535	928926	60.75%	5.014%
27	7.646	2026	2039	2055	rBV	27597	48530	3.17%	0.262%
28	7.997	2126	2148	2171	rBV	344159	589848	38.58%	3.184%
29	8.109	2172	2183	2191	rBV	225389	375855	24.58%	2.029%
30	8.158	2191	2198	2237	rVB	375425	635656	41.57%	3.431%
31	8.373	2254	2265	2280	rBV	159392	266408	17.42%	1.438%
32	8.875	2409	2421	2423	rBV	292737	368426	24.10%	1.989%
33	8.900	2424	2429	2447	rVV	616525	996633	65.18%	5.380%
34	8.997	2448	2459	2464	rVV	196989	322125	21.07%	1.739%

Data Path : Z:\voasrv\HPCHEM1\MSVOA V\Data\VV042920\
 Data File : VV015788.D
 Acq On : 29 Apr 2020 13:29
 Operator : SY/MD
 Sample : L2410-02
 Misc : 25.0mL/MSVOA V/WATER
 ALS Vial : 9 Sample Multiplier: 1

Instrument :
 MSVOA_V
 ClientSampleId :
 DBFE0

Integration Parameters: rteint.p
 Integrator: RTE
 Smoothing : ON Filtering: 5
 Sampling : 1 Min Area: 3 % of largest Peak
 Start Thrs: 0.1 Max Peaks: 100
 Stop Thrs : 0 Peak Location: TOP

If leading or trailing edge < 100 prefer < Baseline drop else tangent >
 Peak separation: 5

Method : Z:\VOASRV\HPCHEM1\MSVOA_V\METHOD\SOMVTR042220WMA.M
 Title : TRACE VOA SOM01.0

35	9.032	2464	2470	2498	rVB	490910	763390	49.93%	4.121%
36	9.161	2498	2510	2531	rBV	1016053	1528981	100.00%	8.254%
37	9.572	2624	2638	2667	rBV5	531210	1170995	76.59%	6.321%
38	9.752	2683	2694	2706	rVB	35335	57757	3.78%	0.312%
39	9.952	2743	2756	2779	rBV	270581	419356	27.43%	2.264%
40	10.238	2835	2845	2863	rVB	65572	103281	6.75%	0.558%
41	10.402	2887	2896	2907	rVB	11333	17162	1.12%	0.093%
42	11.273	3155	3167	3170	rBV	303904	447544	29.27%	2.416%
43	11.666	3271	3289	3314	rBV2	714609	1355674	88.67%	7.318%
44	12.450	3524	3533	3546	rVB3	19894	31429	2.06%	0.170%
45	12.669	3586	3601	3617	rBV	324780	503888	32.96%	2.720%
46	13.768	3931	3943	3965	rBV	488120	759258	49.66%	4.099%

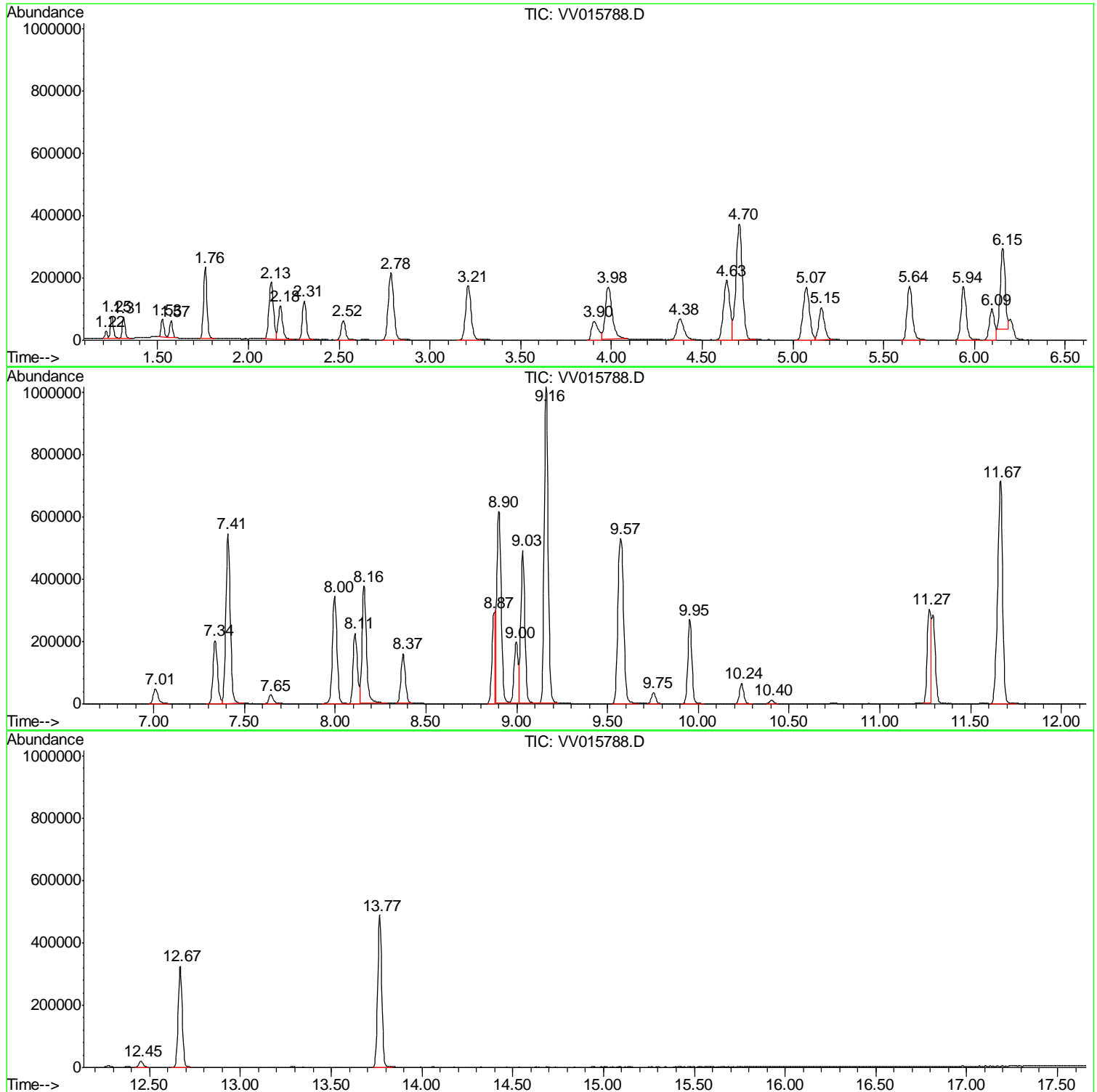
Sum of corrected areas: 18524847

Data Path : Z:\voasrv\HPCHEM1\MSVOA V\Data\VV042920\
Data File : VV015788.D
Acq On : 29 Apr 2020 13:29
Operator : SY/MD
Sample : L2410-02
Misc : 25.0mL/MSVOA V/WATER
ALS Vial : 9 Sample Multiplier: 1

Instrument :
MSVOA_V
ClientSampled :
DBFE0

Quant Method : Z:\VOASRV\HPCHEM1\MSVOA_V\METHOD\SOMVTR042220WMA.M
Quant Title : TRACE VOA SOM01.0

TIC Library : C:\DATABASE\NIST11.L
TIC Integration Parameters: LSCINT.P



Data Path : Z:\voasrv\HPCHEM1\MSVOA V\Data\VV042920\
 Data File : VV015788.D
 Acq On : 29 Apr 2020 13:29
 Operator : SY/MD
 Sample : L2410-02
 Misc : 25.0mL/MSVOA V/WATER
 ALS Vial : 9 Sample Multiplier: 1

Instrument :
 MSVOA_V
 ClientSampleID :
 DBFE0

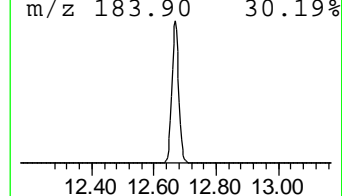
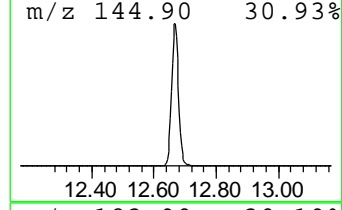
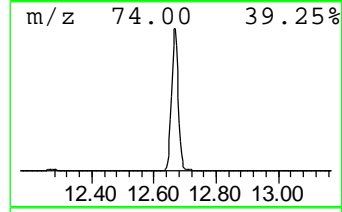
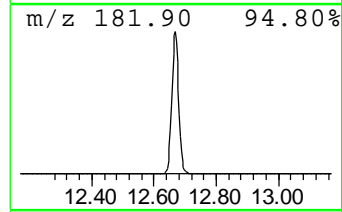
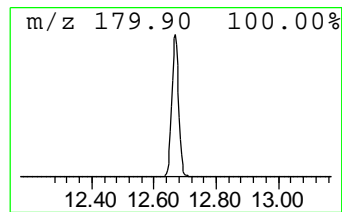
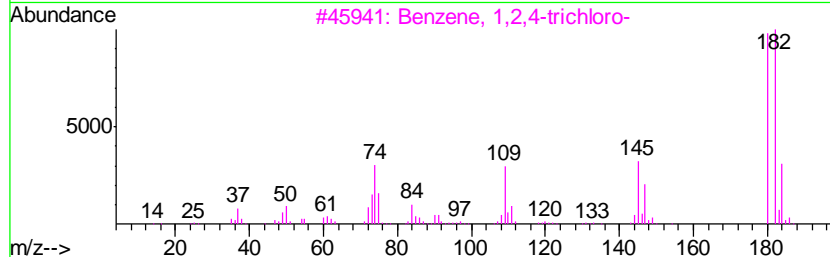
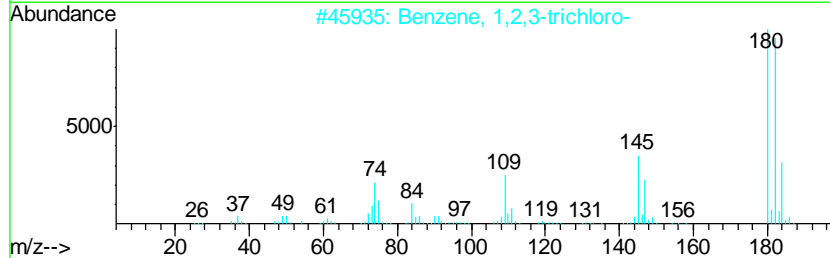
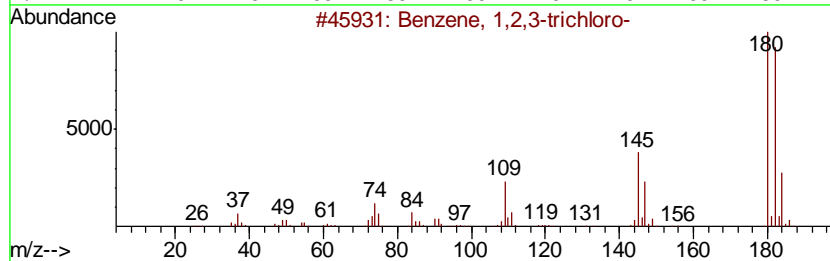
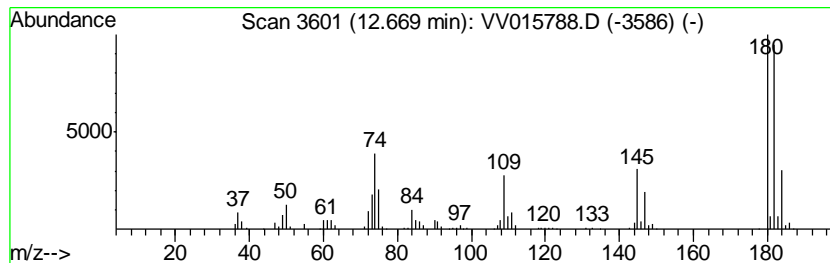
Quant Method : Z:\VOASRV\HPCHEM1\MSVOA_V\METHOD\SOMVTR042220WMA.M
 Quant Title : TRACE VOA SOM01.0

TIC Library : C:\DATABASE\NIST11.L
 TIC Integration Parameters: LSCINT.P

 Peak Number 2 Benzene, 1,3,5-trichloro- Concentration Rank 1

R.T.	EstConc	Area	Relative to ISTD	R.T.
12.67	5.63 ug/L	503888	1,4-Dichlorobenzene-d4	11.27

Hit#	of	Tentative ID	MW	MolForm	CAS#	Qual
1	5	Benzene, 1,2,3-trichloro-	180	C6H3Cl3	000087-61-6	98
2		Benzene, 1,2,3-trichloro-	180	C6H3Cl3	000087-61-6	96
3		Benzene, 1,2,4-trichloro-	180	C6H3Cl3	000120-82-1	96
4		Benzene, 1,3,5-trichloro-	180	C6H3Cl3	000108-70-3	96
5		Benzene, 1,3,5-trichloro-	180	C6H3Cl3	000108-70-3	96



Data Path : Z:\voasrv\HPCHEM1\MSVOA_V\Data\VV042920\
Data File : VV015788.D
Acq On : 29 Apr 2020 13:29
Operator : SY/MD
Sample : L2410-02
Misc : 25.0mL/MSVOA_V/WATER
ALS Vial : 9 Sample Multiplier: 1

Instrument :
MSVOA_V
ClientSampleId :
DBFE0

Quant Method : Z:\VOASRV\HPCHEM1\MSVOA_V\METHOD\SOMVTR042220WMA.M
Quant Title : TRACE VOA SOM01.0

TIC Library : C:\DATABASE\NIST11.L
TIC Integration Parameters: LSCINT.P

TIC Top Hit name	RT	EstConc	Units	Response	--Internal Standard--			
					#	RT	Resp	Conc
Benzene, 1,3,5-tr...	12.67	5.6	ug/L	503888	3	11.27	447544	5.0