

Data Path : Z:\VOASRV\HPCHEM1\MSVOA V\DATA\VV050120\  
 Data File : VV015870.D  
 Acq On : 01 May 2020 19:58  
 Operator : SY/MD  
 Sample : L2432-02  
 Misc : 25.0mL/MSVOA V/WATER  
 ALS Vial : 24 Sample Multiplier: 1

Instrument :  
 MSVOA\_V  
 ClientSampled :

Quant Time: May 02 00:12:32 2020  
 Quant Method : Z:\VOASRV\HPCHEM1\MSVOA\_V\METHOD\SOMVTR042220WMA.M  
 Quant Title : TRACE VOA SOM01.0  
 QLast Update : Sat May 02 00:06:27 2020  
 Response via : Initial Calibration

Internal Standards	R.T.	QIon	Response	Conc	Units	Dev(Min)
1) 1,4-Difluorobenzene	5.64	114	114898	5.00	ug/L	0.00
28) Chlorobenzene-d5	8.87	117	115442	5.00	ug/L	0.00
60) 1,4-Dichlorobenzene-d4	11.27	152	55559	5.00	ug/L	0.00

## System Monitoring Compounds

4) Vinyl Chloride-d3	1.31	65	29878	4.98	ug/L	0.00
Spiked Amount	5.000	Range	40 - 130	Recovery	=	99.60%
7) Chloroethane-d5	1.58	69	28483	4.92	ug/L	0.00
Spiked Amount	5.000	Range	65 - 130	Recovery	=	98.40%
11) 1,1-Dichloroethene-d2	2.12	63	44971	3.42	ug/L	0.00
Spiked Amount	5.000	Range	60 - 125	Recovery	=	68.40%
20) 2-Butanone-d5	3.94	46	99011	51.35	ug/L	-0.03
Spiked Amount	50.000	Range	40 - 130	Recovery	=	102.70%
24) Chloroform-d	4.38	84	62132	4.44	ug/L	0.00
Spiked Amount	5.000	Range	70 - 125	Recovery	=	88.80%
26) 1,2-Dichloroethane-d4	5.06	65	38937	4.97	ug/L	0.00
Spiked Amount	5.000	Range	70 - 130	Recovery	=	99.40%
32) Benzene-d6	5.08	84	125524	4.55	ug/L	0.00
Spiked Amount	5.000	Range	70 - 125	Recovery	=	91.00%
36) 1,2-Dichloropropane-d6	6.10	67	41186	4.68	ug/L	0.00
Spiked Amount	5.000	Range	60 - 140	Recovery	=	93.60%
41) Toluene-d8	7.34	98	107323	4.10	ug/L	0.00
Spiked Amount	5.000	Range	70 - 130	Recovery	=	82.00%
43) trans-1,3-Dichloropropene-	7.65	79	12880	3.78	ug/L	0.00
Spiked Amount	5.000	Range	55 - 130	Recovery	=	75.60%
46) 2-Hexanone-d5	8.11	63	68166	41.06	ug/L	0.00
Spiked Amount	50.000	Range	45 - 130	Recovery	=	82.12%
57) 1,1,2,2-Tetrachloroethane-	10.24	84	29359	4.48	ug/L	0.00
Spiked Amount	5.000	Range	65 - 120	Recovery	=	89.60%
64) 1,2-Dichlorobenzene-d4	11.65	152	42058	4.45	ug/L	0.00
Spiked Amount	5.000	Range	80 - 120	Recovery	=	89.00%

## Target Compounds

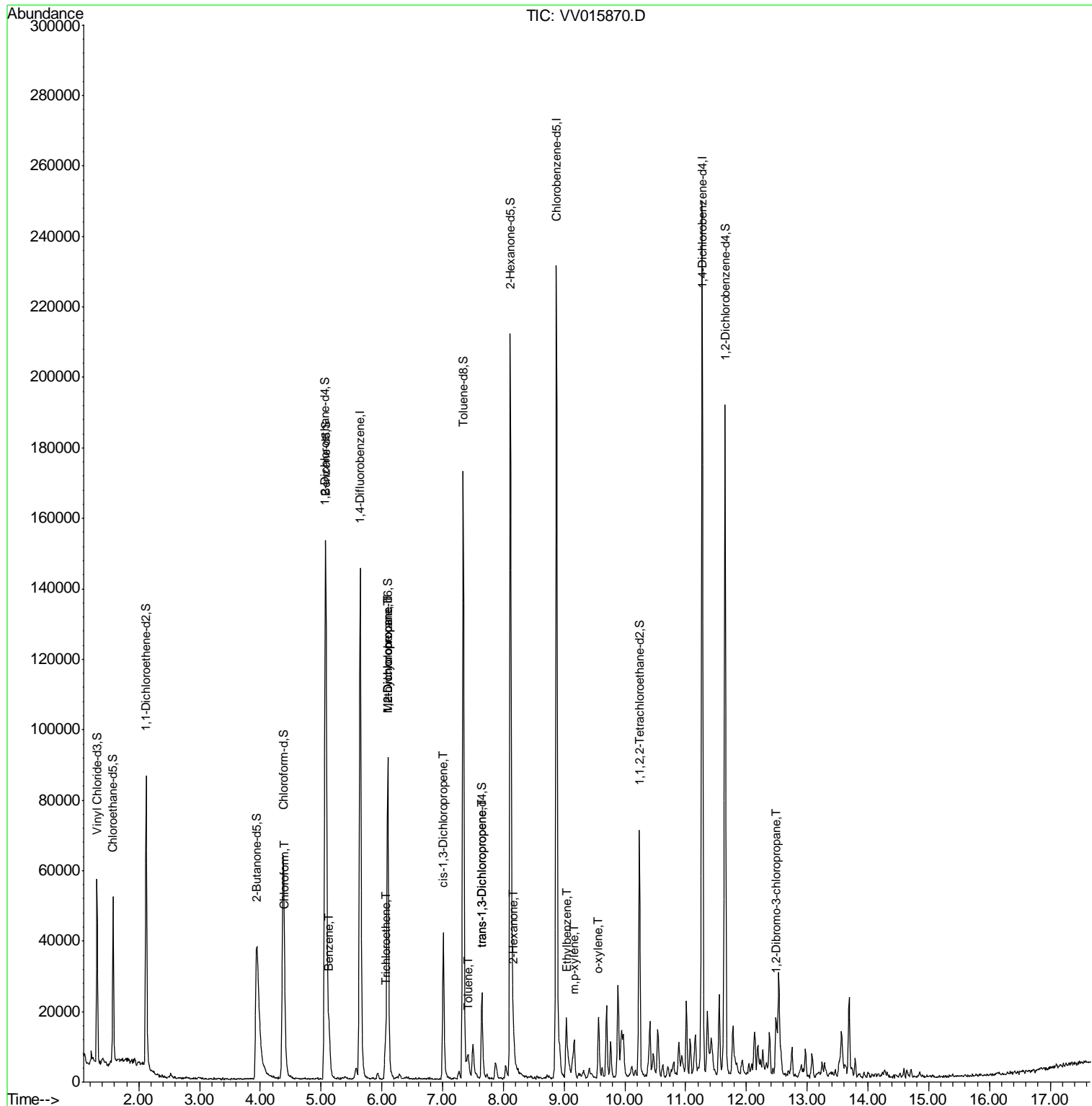
Target Compounds	R.T.	QIon	Response	Conc	Units	Ovalue
25) Chloroform	4.41	83	5674	0.364	ug/L	95
33) Benzene	5.13	78	13869	0.420	ug/L	100
34) Trichloroethene	6.06	95	3005	0.330	ug/L #	10
35) Methylcyclohexane	6.09	83	9986	0.714	ug/L #	16
37) 1,2-Dichloropropane	6.10	63	5009	0.597	ug/L #	88
39) cis-1,3-Dichloropropene	7.01	75	1109	0.095	ug/L	95
42) Toluene	7.41	91	3517	0.100	ug/L	97
44) trans-1,3-Dichloropropene	7.64	75	683	0.070	ug/L	94
48) 2-Hexanone	8.17	43	4442	1.145	ug/L #	80
52) Ethylbenzene	9.04	91	10993	0.270	ug/L	97
53) m,p-xylene	9.17	106	2579	0.173	ug/L	91
54) o-xylene	9.57	106	3836	0.265	ug/L	89
66) 1,2-Dibromo-3-chloropropan	12.48	75	432	0.417	ug/L #	11

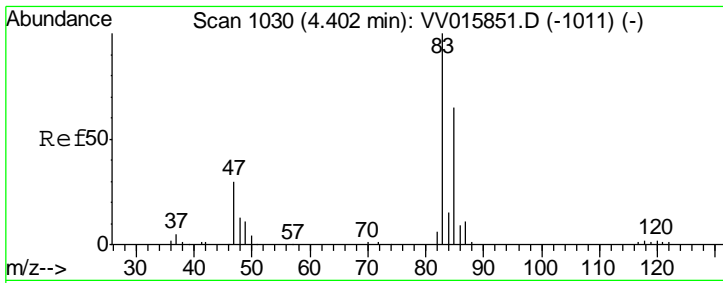
(#) = qualifier out of range (m) = manual integration (+) = signals summed

Data Path : Z:\VOASRV\HPCHEM1\MSVOA V\DATA\VV050120\  
 Data File : VV015870.D  
 Acq On : 01 May 2020 19:58  
 Operator : SY/MD  
 Sample : L2432-02  
 Misc : 25.0mL/MSVOA V/WATER  
 ALS Vial : 24 Sample Multiplier: 1

Instrument :  
 MSVOA\_V  
 ClientSampled :

Quant Time: May 02 00:12:32 2020  
 Quant Method : Z:\VOASRV\HPCHEM1\MSVOA\_V\METHOD\SOMVTR042220WMA.M  
 Quant Title : TRACE VOA SOM01.0  
 QLast Update : Sat May 02 00:06:27 2020  
 Response via : Initial Calibration

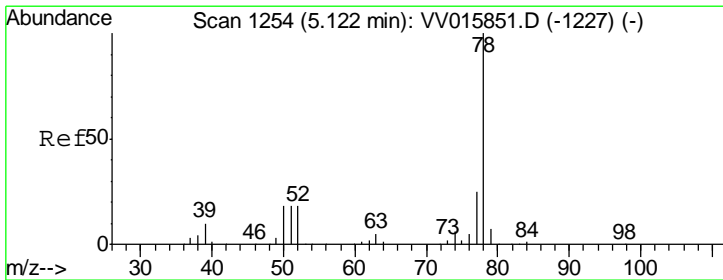
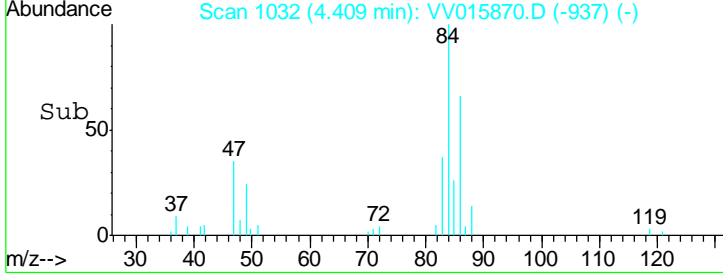
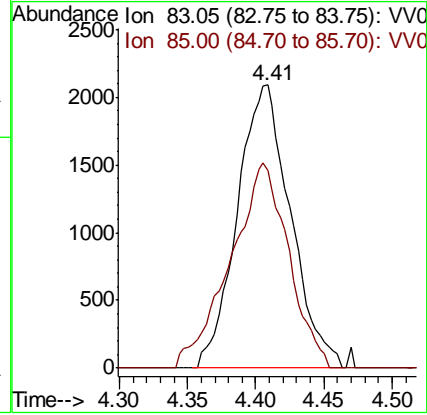
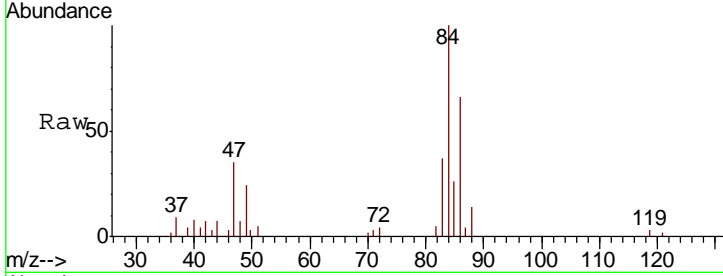




#25  
 Chloroform  
 Concen: 0.364 ug/L  
 RT: 4.41 min Scan# 1032  
 Delta R.T. 0.01 min  
 Lab File: VV015870.D  
 Acq: 01 May 2020 19:58

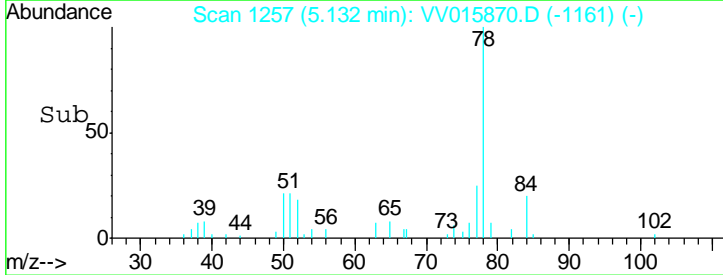
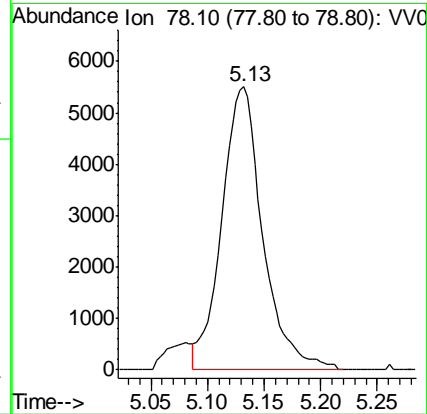
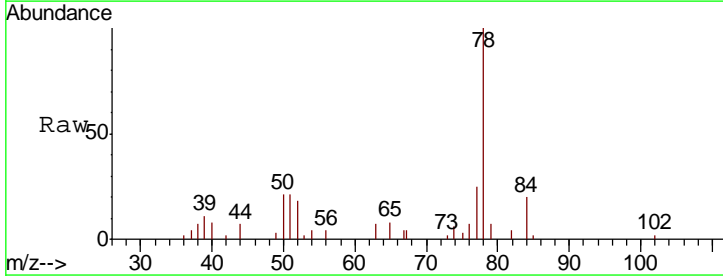
Instrument :  
 MSVOA\_V  
 ClientSampled :

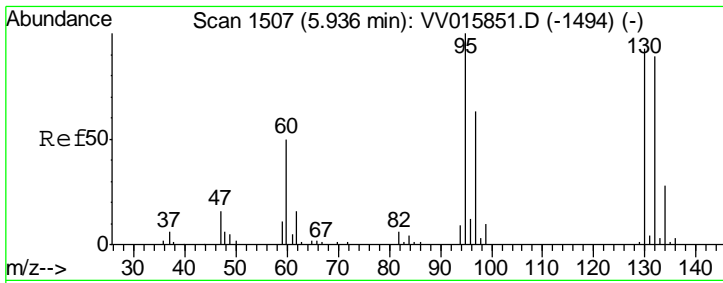
Tgt Ion	Resp	Lower	Upper
83	100		
85	69.9	46.1	85.5



#33  
 Benzene  
 Concen: 0.420 ug/L  
 RT: 5.13 min Scan# 1257  
 Delta R.T. 0.01 min  
 Lab File: VV015870.D  
 Acq: 01 May 2020 19:58

Tgt Ion: 78 Resp: 13869

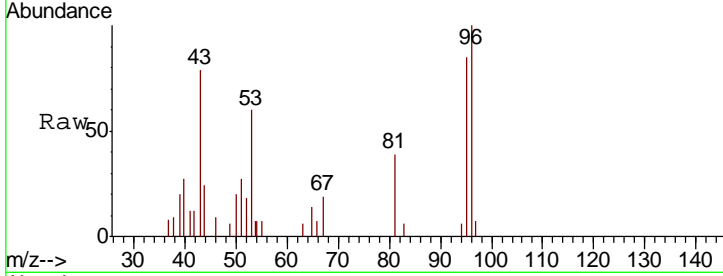




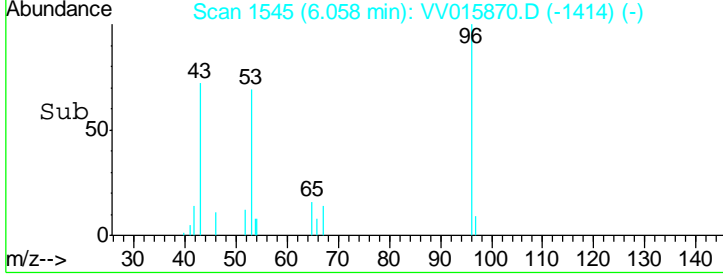
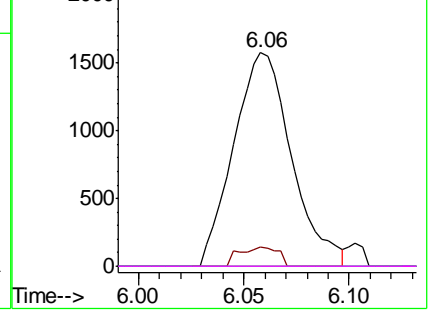
#34  
 Trichloroethene  
 Concen: 0.330 ug/L  
 RT: 6.06 min Scan# 1545  
 Delta R.T. 0.12 min  
 Lab File: VV015870.D  
 Acq: 01 May 2020 19:58

Instrument : MSVOA\_V  
 ClientSampled :

Tgt Ion	Resp	Lower	Upper
95	3005		
97	8.8	44.7	82.9#
132	0.0	65.2	121.0#
130	0.0	65.0	120.6#

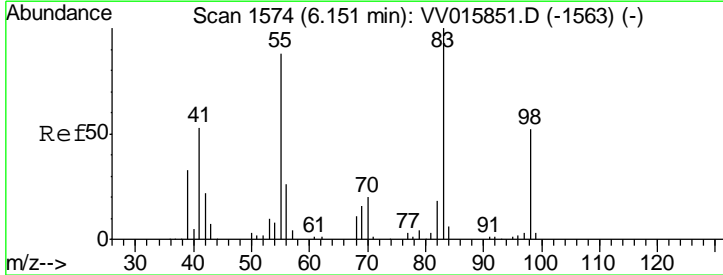


Abundance Ion 95.00 (94.70 to 95.70): VV0  
 Ion 96.95 (96.65 to 97.65): VV0  
 Ion 131.95 (131.65 to 132.65): VV0  
 Ion 129.95 (129.65 to 130.65): VV0

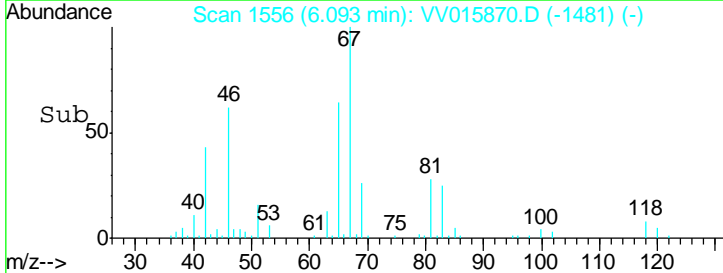
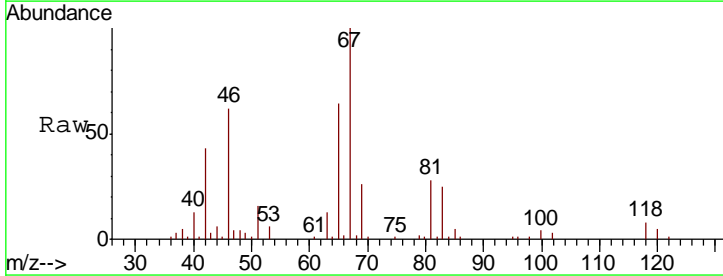
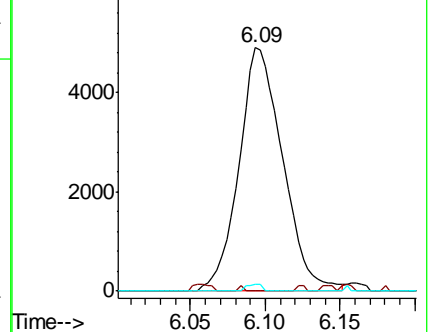


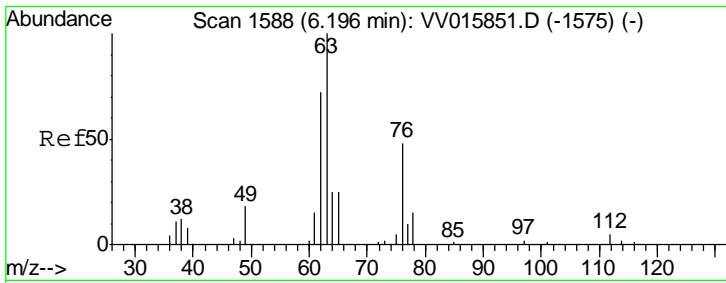
#35  
 Methylcyclohexane  
 Concen: 0.714 ug/L  
 RT: 6.09 min Scan# 1556  
 Delta R.T. -0.06 min  
 Lab File: VV015870.D  
 Acq: 01 May 2020 19:58

Tgt Ion	Resp	Lower	Upper
83	9986		
55	0.2	66.6	99.8#
98	1.0	39.5	59.3#



Abundance Ion 83.15 (82.85 to 83.85): VV0  
 Ion 55.10 (54.80 to 55.80): VV0  
 Ion 98.15 (97.85 to 98.85): VV0

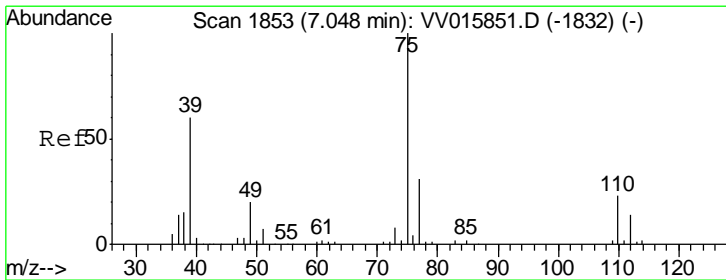
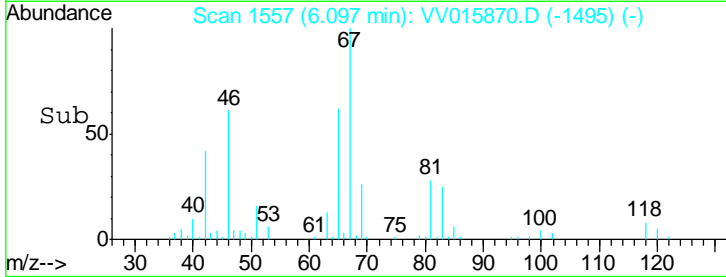
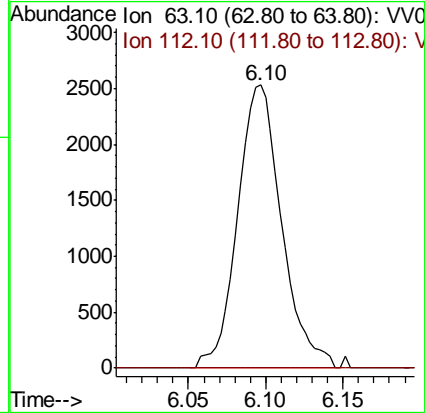
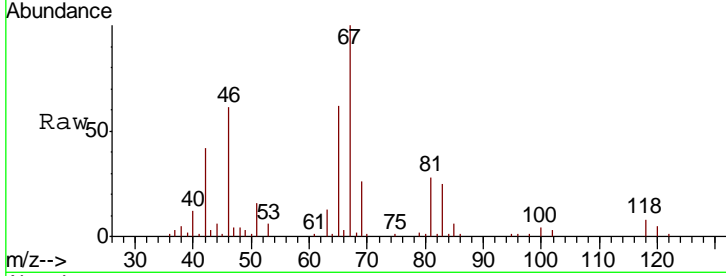




#37  
 1,2-Dichloropropane  
 Concen: 0.597 ug/L  
 RT: 6.10 min Scan# 1557  
 Delta R.T. -0.10 min  
 Lab File: VV015870.D  
 Acq: 01 May 2020 19:58

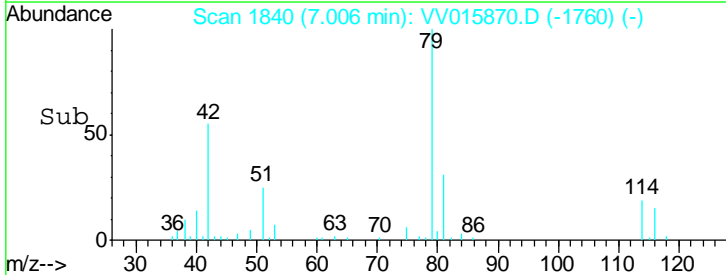
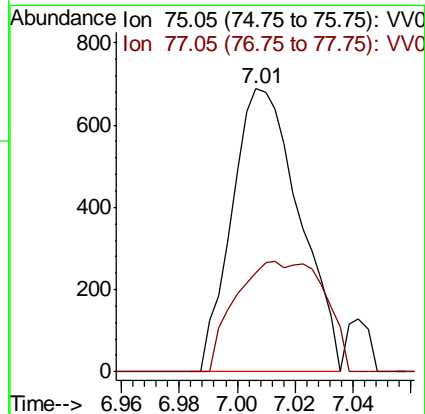
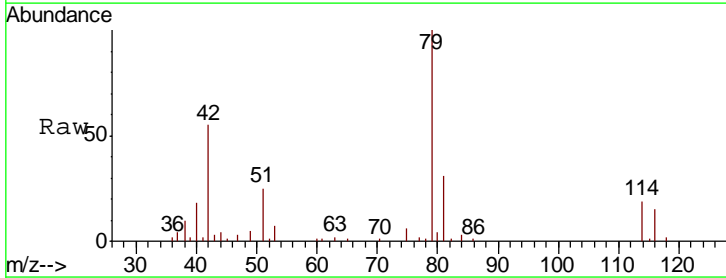
Instrument :  
 MSVOA\_V  
 ClientSampled :

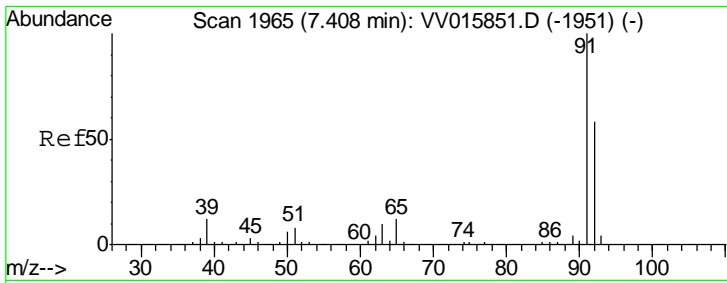
Tgt Ion	Resp	Lower	Upper
63	100		
112	0.4	3.6	5.4#



#39  
 cis-1,3-Dichloropropene  
 Concen: 0.095 ug/L  
 RT: 7.01 min Scan# 1840  
 Delta R.T. -0.04 min  
 Lab File: VV015870.D  
 Acq: 01 May 2020 19:58

Tgt Ion	Resp	Lower	Upper
75	100		
77	34.9	22.3	41.5

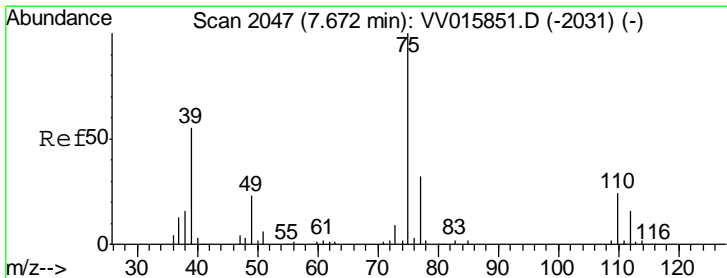
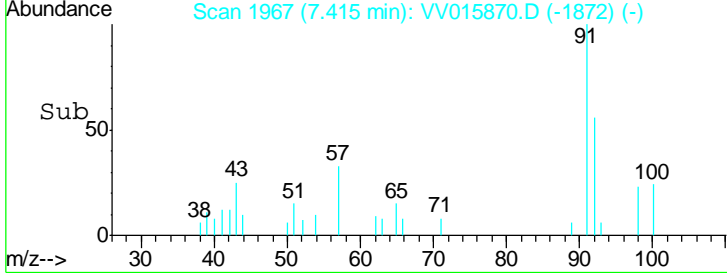
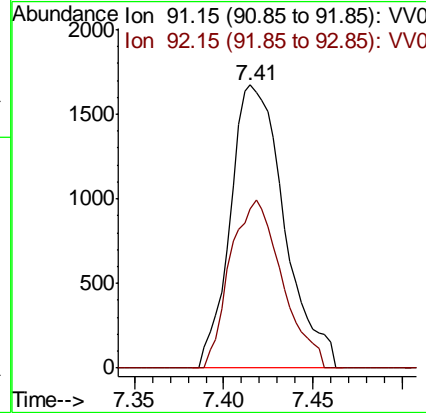
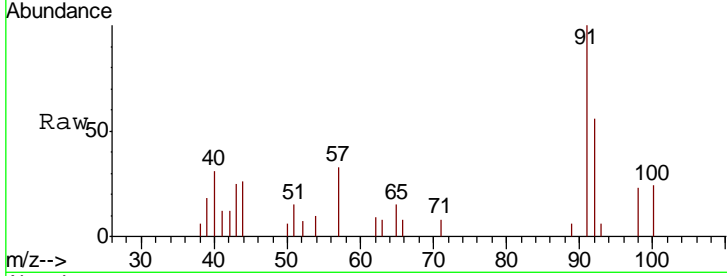




#42  
 Toluene  
 Concen: 0.100 ug/L  
 RT: 7.41 min Scan# 1967  
 Delta R.T. 0.01 min  
 Lab File: VV015870.D  
 Acq: 01 May 2020 19:58

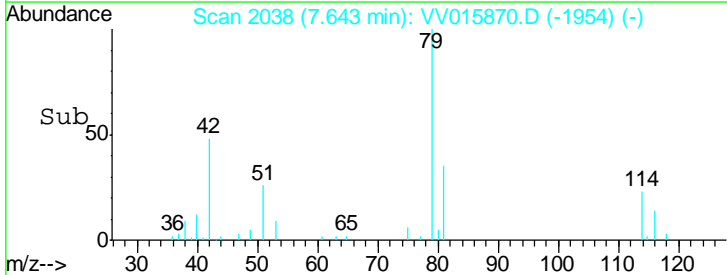
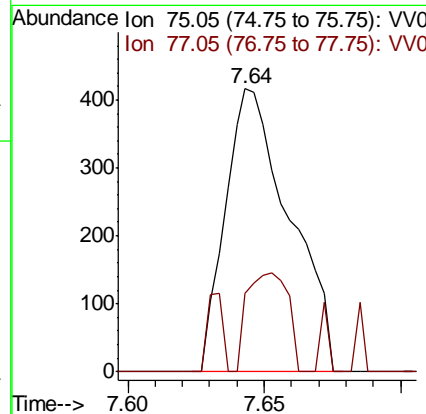
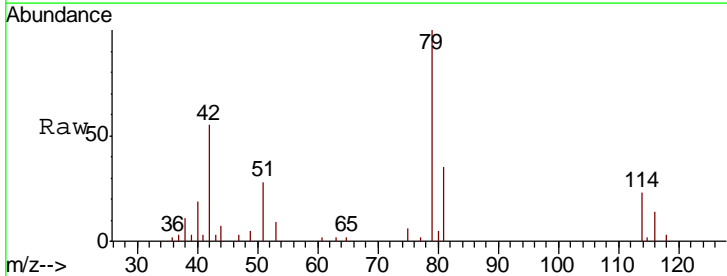
Instrument :  
 MSVOA\_V  
 ClientSampled :

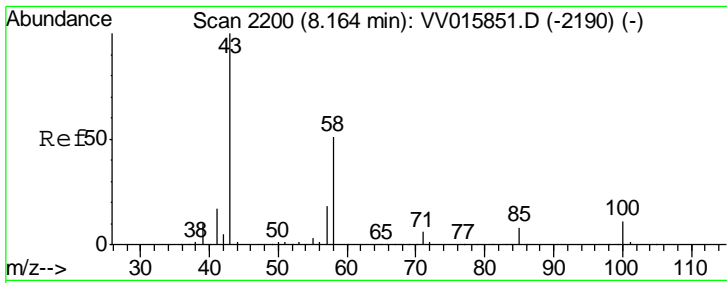
Tgt Ion: 91 Resp: 3517  
 Ion Ratio Lower Upper  
 91 100  
 92 56.2 40.7 75.7



#44  
 trans-1,3-Dichloropropene  
 Concen: 0.070 ug/L  
 RT: 7.64 min Scan# 2038  
 Delta R.T. -0.03 min  
 Lab File: VV015870.D  
 Acq: 01 May 2020 19:58

Tgt Ion: 75 Resp: 683  
 Ion Ratio Lower Upper  
 75 100  
 77 27.8 21.8 40.6

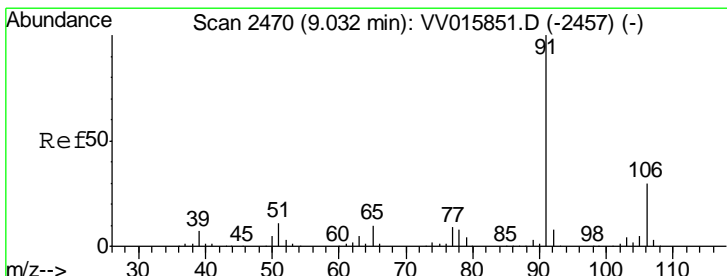
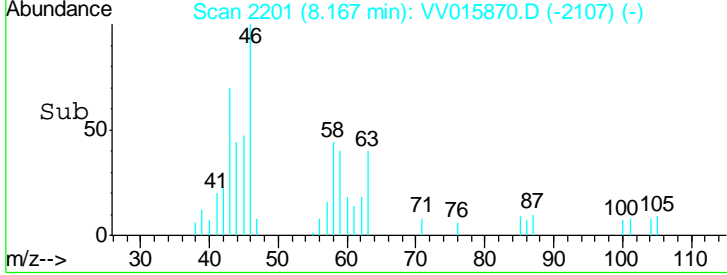
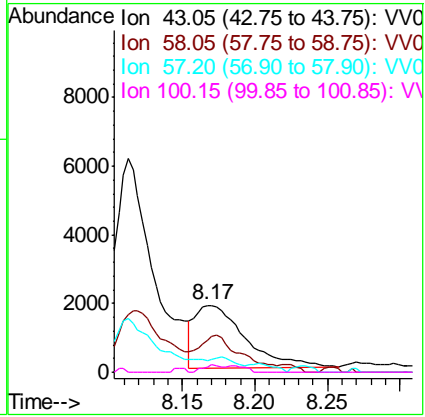
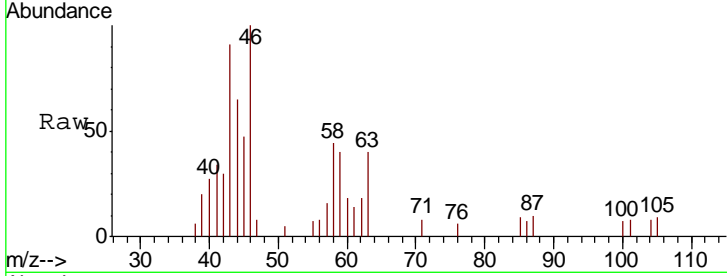




#48  
 2-Hexanone  
 Concen: 1.145 ug/L  
 RT: 8.17 min Scan# 2201  
 Delta R.T. 0.00 min  
 Lab File: VV015870.D  
 Acq: 01 May 2020 19:58

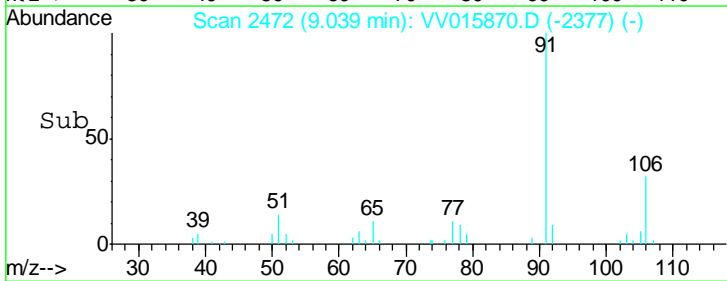
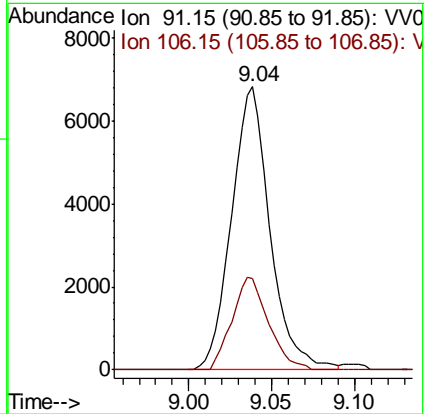
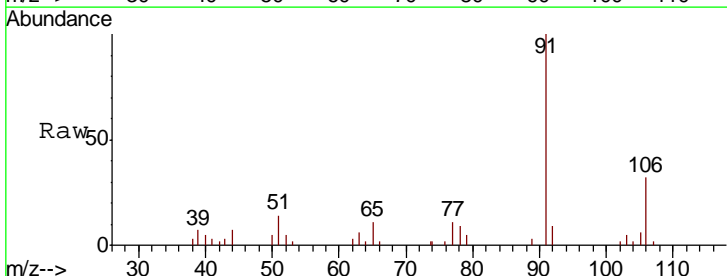
Instrument : MSVOA\_V  
 ClientSampled :

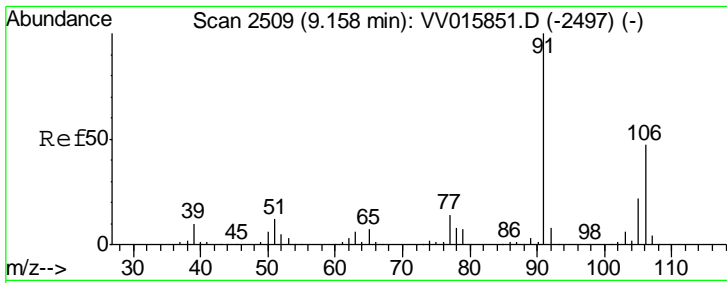
Tgt Ion	Resp	Lower	Upper
43	4442		
58	36.1	41.1	61.7#
57	11.4	15.0	22.4#
100	4.0	9.0	13.4#



#52  
 Ethylbenzene  
 Concen: 0.270 ug/L  
 RT: 9.04 min Scan# 2472  
 Delta R.T. 0.01 min  
 Lab File: VV015870.D  
 Acq: 01 May 2020 19:58

Tgt Ion	Resp	Lower	Upper
91	10993		
106	32.1	21.3	39.5

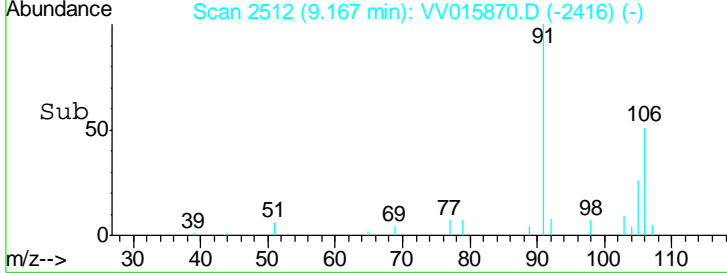
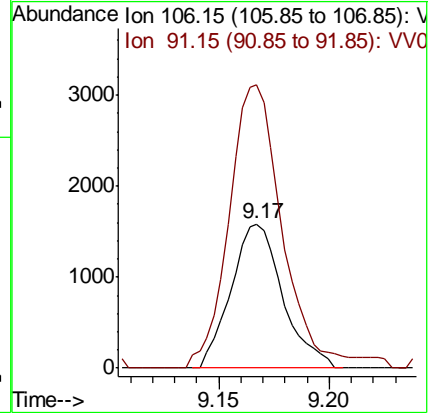
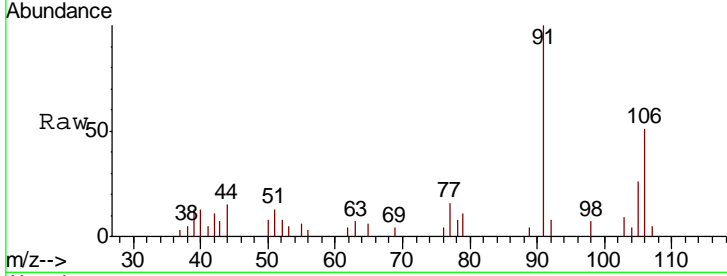




#53  
 m,p-xylene  
 Concen: 0.173 ug/L  
 RT: 9.17 min Scan# 2512  
 Delta R.T. 0.01 min  
 Lab File: VV015870.D  
 Acq: 01 May 2020 19:58

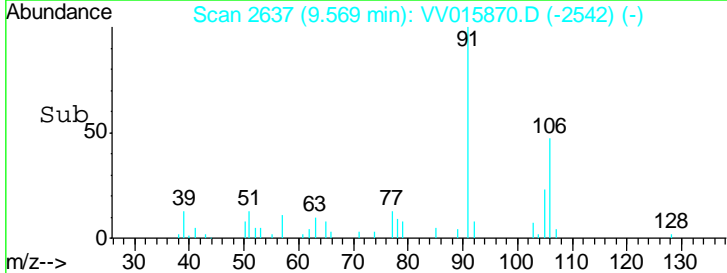
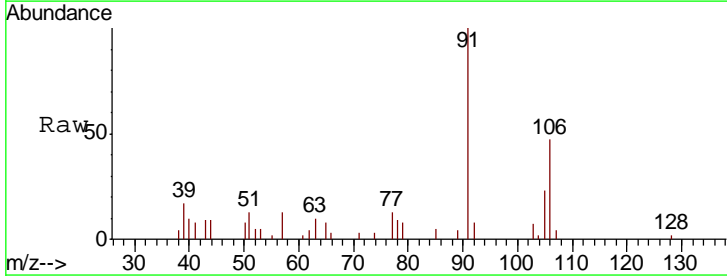
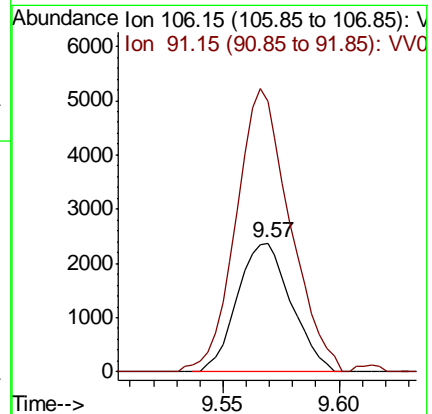
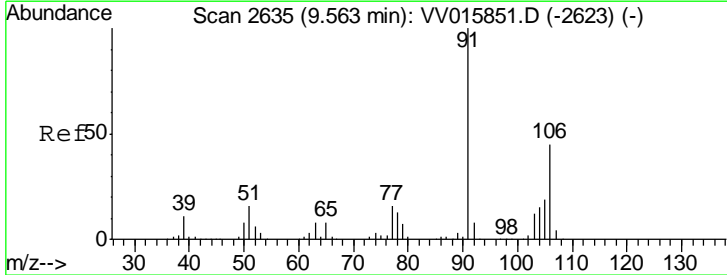
Instrument : MSVOA\_V  
 ClientSampled :

Tgt Ion:106 Resp: 2579  
 Ion Ratio Lower Upper  
 106 100  
 91 196.3 147.8 274.4

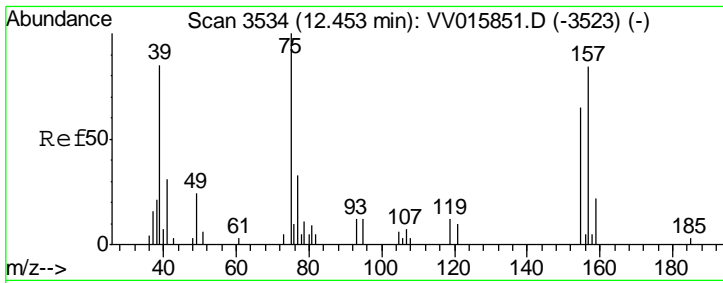


#54  
 o-xylene  
 Concen: 0.265 ug/L  
 RT: 9.57 min Scan# 2637  
 Delta R.T. 0.01 min  
 Lab File: VV015870.D  
 Acq: 01 May 2020 19:58

Tgt Ion:106 Resp: 3836  
 Ion Ratio Lower Upper  
 106 100  
 91 210.6 159.8 296.8







#66  
 1,2-Dibromo-3-chloropropane  
 Concen: 0.417 ug/L  
 RT: 12.48 min Scan# 3543  
 Delta R.T. 0.03 min  
 Lab File: VV015870.D  
 Acq: 01 May 2020 19:58

Instrument : MSVOA\_V  
 ClientSampled :

Tot Ion	Resp	Lower	Upper
75	432		
75	100		
155	0.0	51.0	76.4#
157	0.0	70.6	106.0#

