

Data Path : Z:\voasrv\HPCHEM1\MSVOA_V\Data\VW050123\
 Data File : VW030954.D
 Acq On : 01 May 2023 14:40
 Operator : SY/MD
 Sample : 02528-09 200X
 Misc : 25.0mL/MSVOA_V/WATER
 ALS Vial : 13 Sample Multiplier: 1

Instrument :
 MSVOA_V
 ClientSampleId :
 HOA39

Quant Time: May 02 01:34:01 2023
 Quant Method : Z:\voasrv\HPCHEM1\MSVOA_V\Method\SFAMVTR042823WMA.M
 Quant Title : TRACE VOA SFAM1.0
 QLast Update : Sat Apr 29 01:06:38 2023
 Response via : Initial Calibration

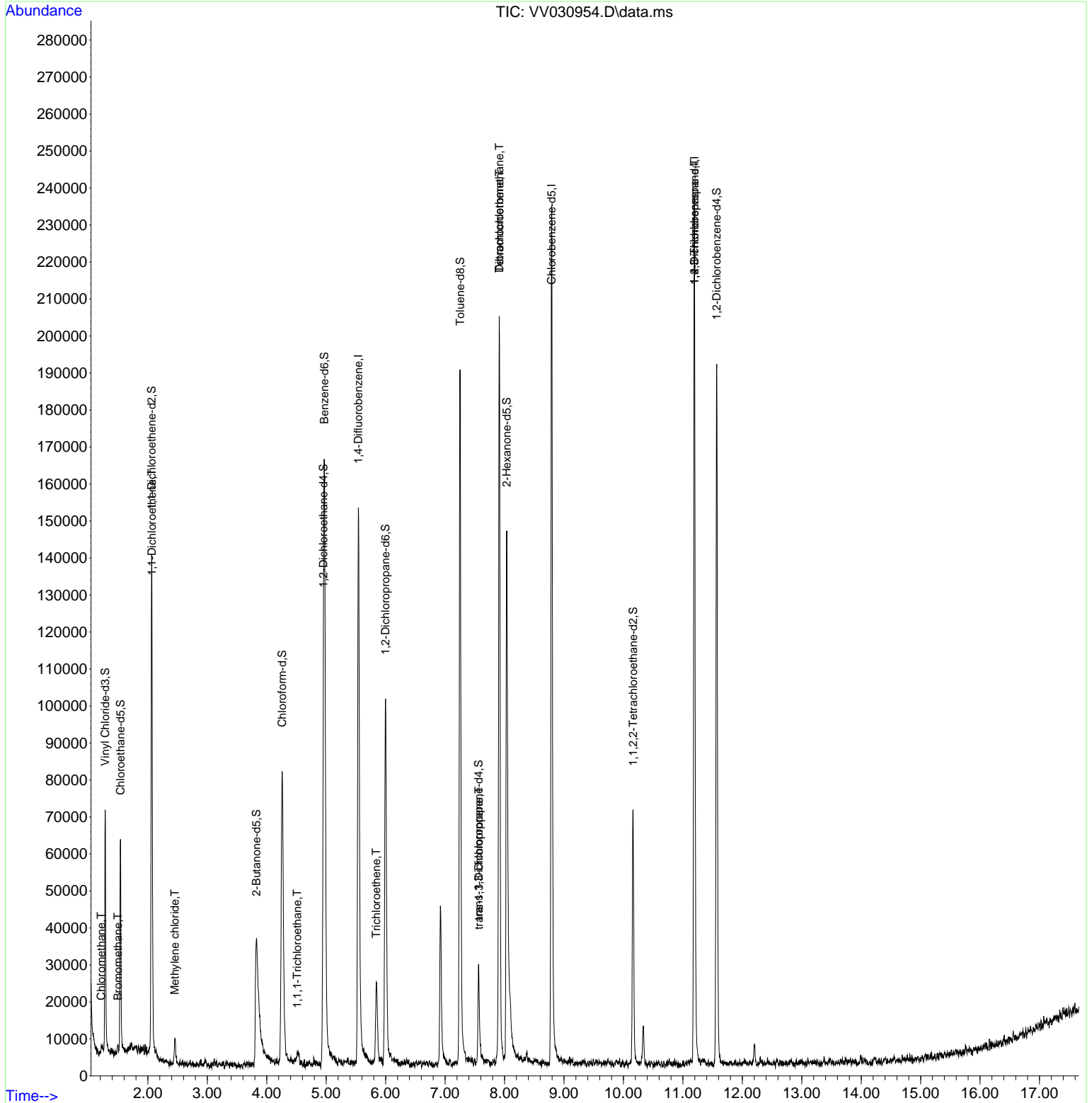
Compound	R.T.	QIon	Response	Conc	Units	Dev(Min)
Internal Standards						
1) 1,4-Difluorobenzene	5.542	114	132419	5.000	ug/L	0.00
28) Chlorobenzene-d5	8.793	117	129955	5.000	ug/L	0.00
58) 1,4-Dichlorobenzene-d4	11.194	152	66558	5.000	ug/L	0.00
System Monitoring Compounds						
4) Vinyl Chloride-d3	1.282	65	43004	3.942	ug/L	0.00
Spiked Amount	5.000	Range 40 - 130	Recovery	=	78.800%	
7) Chloroethane-d5	1.539	69	35852	4.028	ug/L	0.00
Spiked Amount	5.000	Range 65 - 130	Recovery	=	80.600%	
11) 1,1-Dichloroethene-d2	2.063	65	22659	3.924	ug/L	0.00
Spiked Amount	5.000	Range 60 - 125	Recovery	=	78.400%	
20) 2-Butanone-d5	3.825	46	76254	39.415	ug/L	0.00
Spiked Amount	50.000	Range 40 - 130	Recovery	=	78.820%	
24) Chloroform-d	4.259	84	83514	3.852	ug/L	0.00
Spiked Amount	5.000	Range 70 - 125	Recovery	=	77.000%	
26) 1,2-Dichloroethane-d4	4.953	65	43556	3.951	ug/L	0.00
Spiked Amount	5.000	Range 70 - 130	Recovery	=	79.000%	
32) Benzene-d6	4.970	84	146711	3.851	ug/L	0.00
Spiked Amount	5.000	Range 70 - 125	Recovery	=	77.000%	
36) 1,2-Dichloropropane-d6	5.998	67	42348	3.823	ug/L	0.00
Spiked Amount	5.000	Range 60 - 140	Recovery	=	76.400%	
41) Toluene-d8	7.252	98	128192	3.534	ug/L	0.00
Spiked Amount	5.000	Range 70 - 130	Recovery	=	70.600%	
43) trans-1,3-Dichloroprop...	7.564	79	14704	3.541	ug/L	0.00
Spiked Amount	5.000	Range 55 - 130	Recovery	=	70.800%	
46) 2-Hexanone-d5	8.037	63	51872	35.658	ug/L	0.00
Spiked Amount	50.000	Range 45 - 130	Recovery	=	71.320%	
56) 1,1,2,2-Tetrachloroeth...	10.162	84	30220	3.764	ug/L	0.00
Spiked Amount	5.000	Range 65 - 120	Recovery	=	75.200%	
66) 1,2-Dichlorobenzene-d4	11.571	152	50057	4.035	ug/L	0.00
Spiked Amount	5.000	Range 80 - 120	Recovery	=	80.600%	
Target Compounds						
3) Chloromethane	1.217	50	1771	0.144	ug/L #	78
6) Bromomethane	1.494	94	580	0.119	ug/L	95
12) 1,1-Dichloroethene	2.069	96	1813	0.203	ug/L #	1
16) Methylene chloride	2.455	84	2826	0.280	ug/L	90
29) 1,1,1-Trichloroethane	4.513	97	2101	0.129	ug/L	93
34) Trichloroethene	5.844	95	7068	0.811	ug/L	88
44) trans-1,3-Dichloropropene	7.568	75	1020	0.103	ug/L #	83
47) Tetrachloroethene	7.912	164	45251	5.444	ug/L	97
49) Dibromochloromethane	7.912	129	37626	5.199	ug/L #	10
61) 1,2,3-Trichloropropane	11.194	75	7024	1.680	ug/L #	60

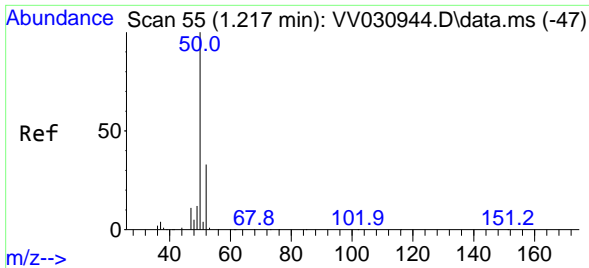
(#) = qualifier out of range (m) = manual integration (+) = signals summed

Data Path : Z:\voasrv\HPCHEM1\MSVOA_V\Data\VV050123\
 Data File : VV030954.D
 Acq On : 01 May 2023 14:40
 Operator : SY/MD
 Sample : 02528-09 200X
 Misc : 25.0mL/MSVOA_V/WATER
 ALS Vial : 13 Sample Multiplier: 1

Instrument :
 MSVOA_V
 ClientSampleId :
 HOA39

Quant Time: May 02 01:34:01 2023
 Quant Method : Z:\voasrv\HPCHEM1\MSVOA_V\Method\SFAMVTR042823WMA.M
 Quant Title : TRACE VOA SFAM1.0
 QLast Update : Sat Apr 29 01:06:38 2023
 Response via : Initial Calibration

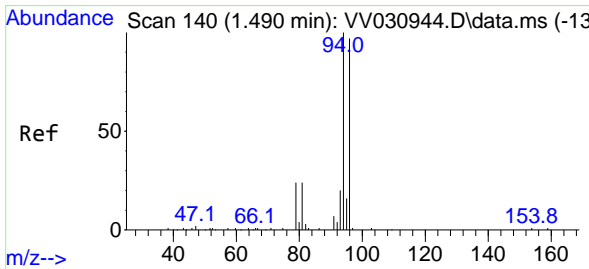
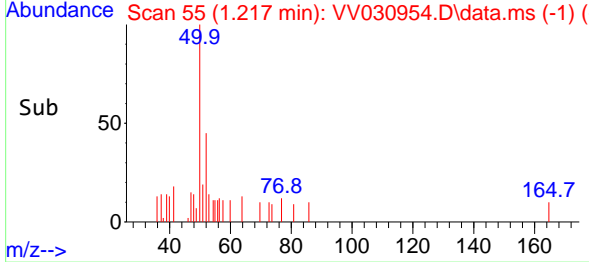
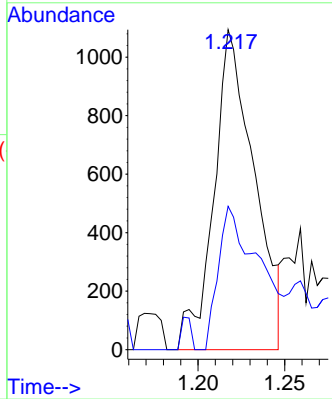
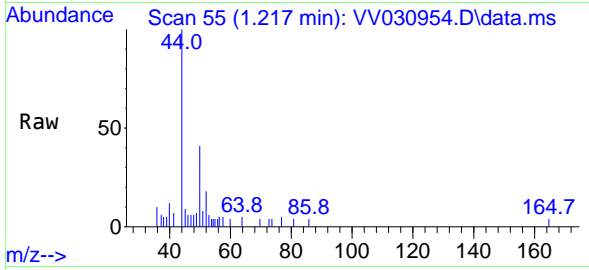




#3
 Chloromethane
 Concen: 0.144 ug/L
 RT: 1.217 min Scan# 51
 Delta R.T. 0.000 min
 Lab File: VV030954.D
 Acq: 01 May 2023 14:40

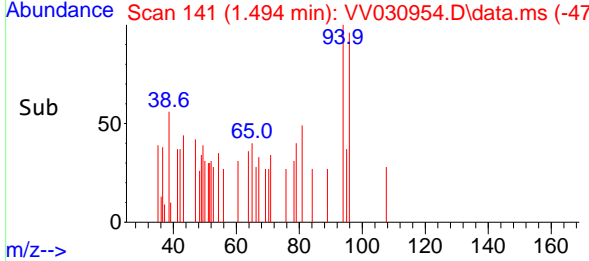
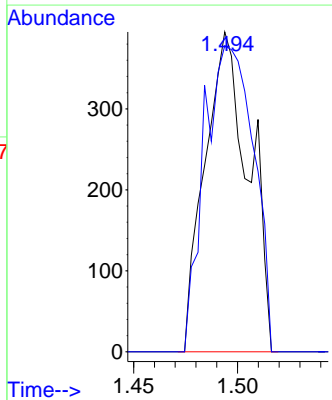
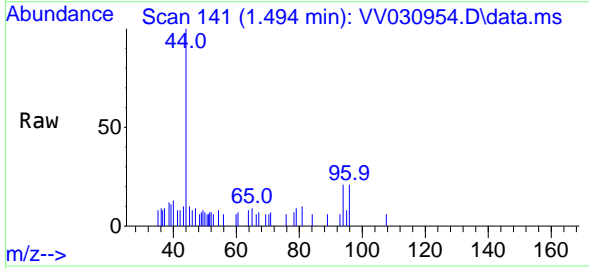
Instrument : MSVOA_V
 ClientSampleId : HOA39

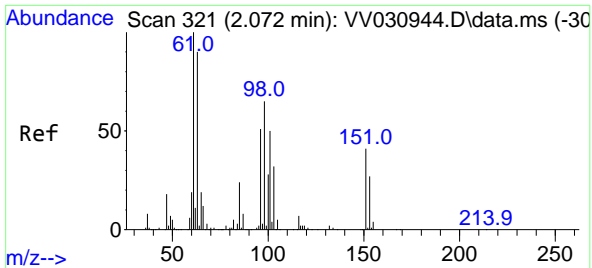
Tgt Ion: 50 Resp: 1771
 Ion Ratio Lower Upper
 50 100
 52 44.8 22.8 42.4#



#6
 Bromomethane
 Concen: 0.119 ug/L
 RT: 1.494 min Scan# 141
 Delta R.T. 0.003 min
 Lab File: VV030954.D
 Acq: 01 May 2023 14:40

Tgt Ion: 94 Resp: 580
 Ion Ratio Lower Upper
 94 100
 96 95.7 63.4 117.8

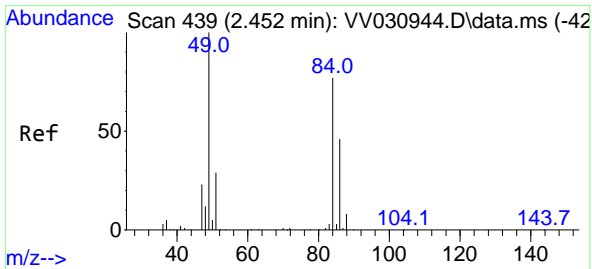
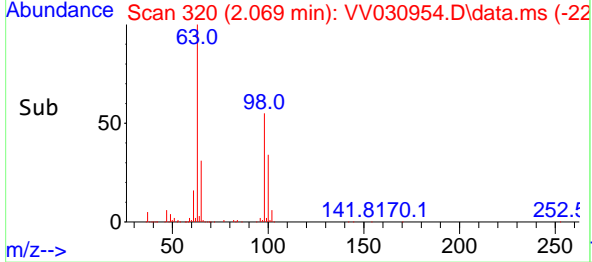
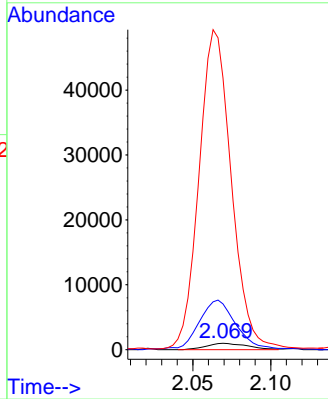
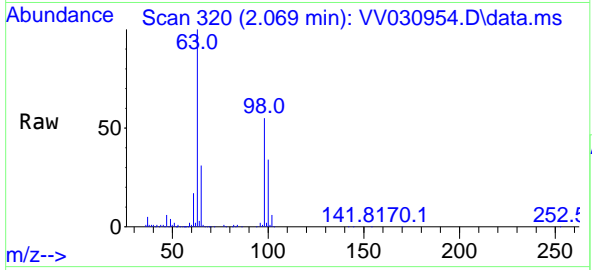




#12
 1,1-Dichloroethene
 Concen: 0.203 ug/L
 RT: 2.069 min Scan# 31
 Delta R.T. -0.003 min
 Lab File: VV030954.D
 Acq: 01 May 2023 14:40

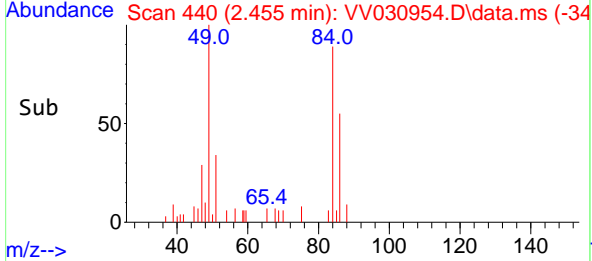
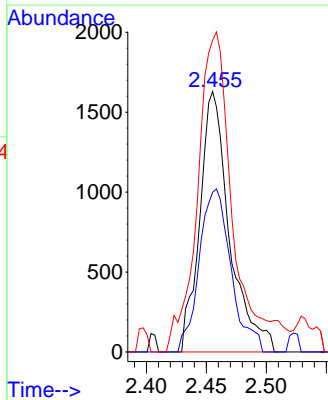
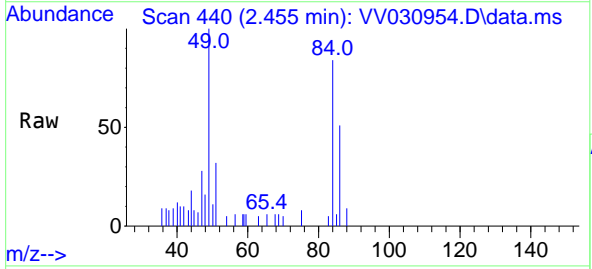
Instrument : MSVOA_V
 ClientSampleId : HOA39

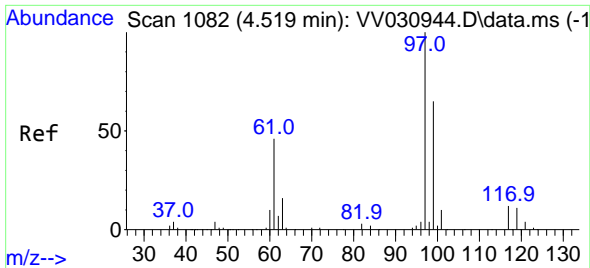
Tgt Ion: 96 Resp: 1813
 Ion Ratio Lower Upper
 96 100
 61 709.0 135.6 251.8#
 63 4211.7 121.1 224.9#



#16
 Methylene chloride
 Concen: 0.280 ug/L
 RT: 2.455 min Scan# 440
 Delta R.T. 0.000 min
 Lab File: VV030954.D
 Acq: 01 May 2023 14:40

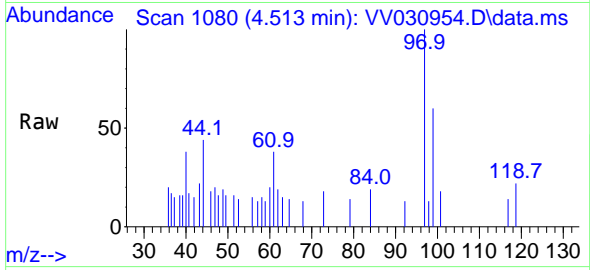
Tgt Ion: 84 Resp: 2826
 Ion Ratio Lower Upper
 84 100
 86 61.3 46.1 85.5
 49 119.6 94.3 175.1



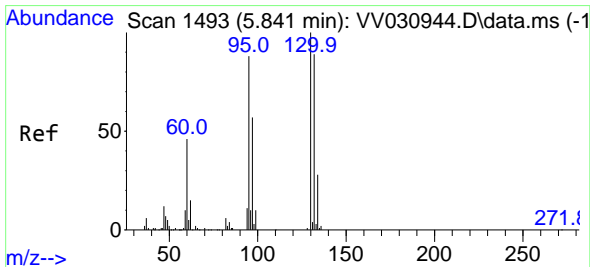
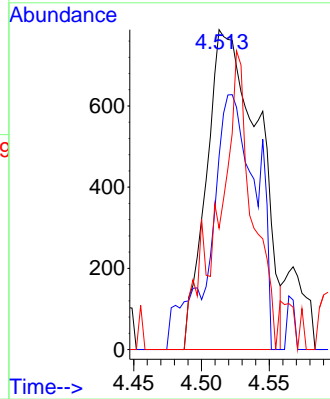
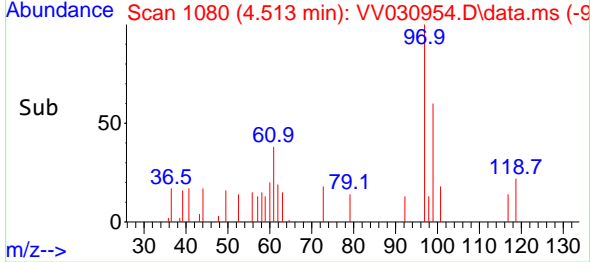


#29
 1,1,1-Trichloroethane
 Concen: 0.129 ug/L
 RT: 4.513 min Scan# 1080
 Delta R.T. -0.010 min
 Lab File: VV030954.D
 Acq: 01 May 2023 14:40

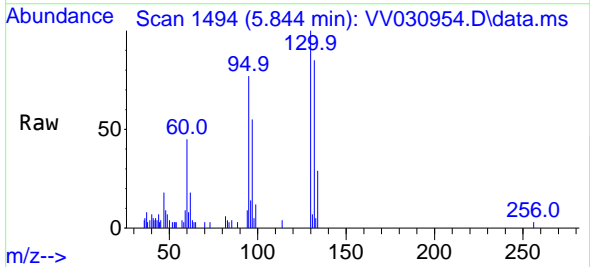
Instrument : MSVOA_V
 ClientSampleId : HOA39



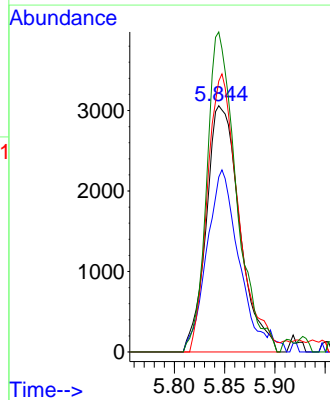
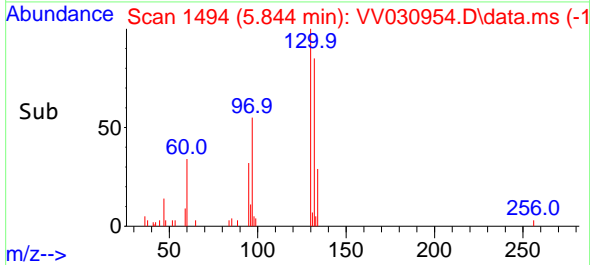
Tgt Ion: 97 Resp: 2101
 Ion Ratio Lower Upper
 97 100
 99 70.5 51.4 77.2
 61 50.2 37.4 56.0

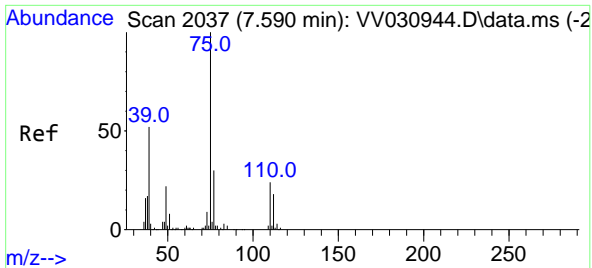


#34
 Trichloroethene
 Concen: 0.811 ug/L
 RT: 5.844 min Scan# 1494
 Delta R.T. 0.000 min
 Lab File: VV030954.D
 Acq: 01 May 2023 14:40



Tgt Ion: 95 Resp: 7068
 Ion Ratio Lower Upper
 95 100
 97 71.0 46.2 85.8
 132 110.0 72.7 135.1
 130 129.9 75.7 140.5

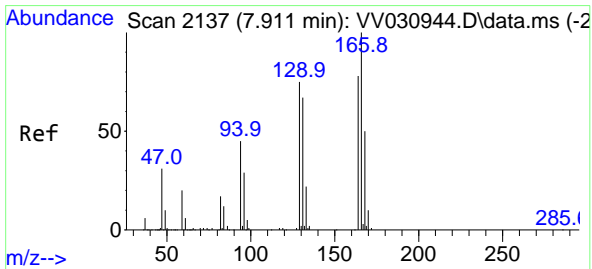
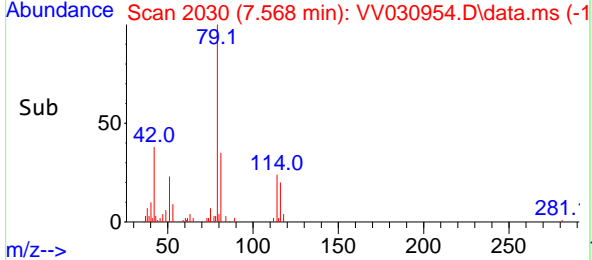
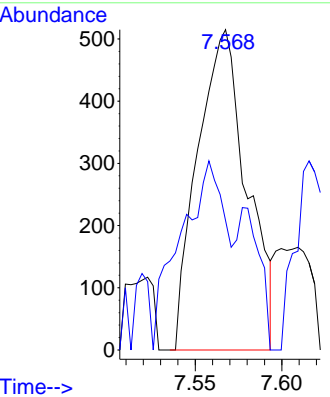
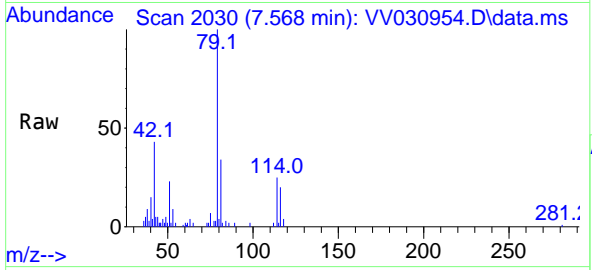




#44
 trans-1,3-Dichloropropene
 Concen: 0.103 ug/L
 RT: 7.568 min Scan# 2030
 Delta R.T. -0.026 min
 Lab File: VV030954.D
 Acq: 01 May 2023 14:40

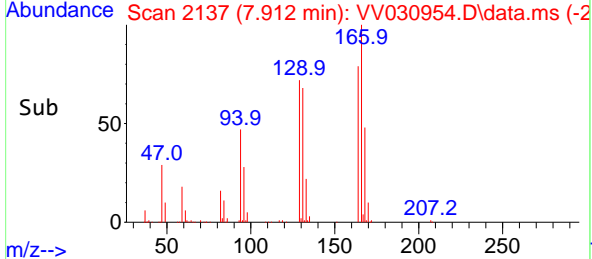
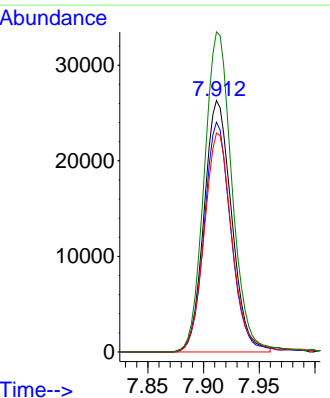
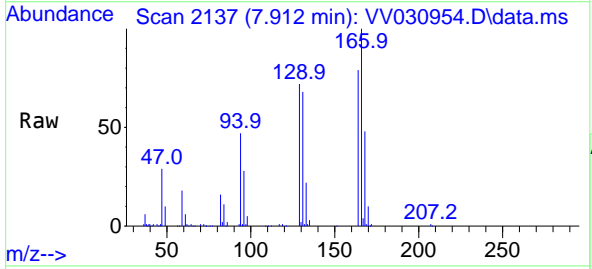
Instrument : MSVOA_V
 ClientSampleId : HOA39

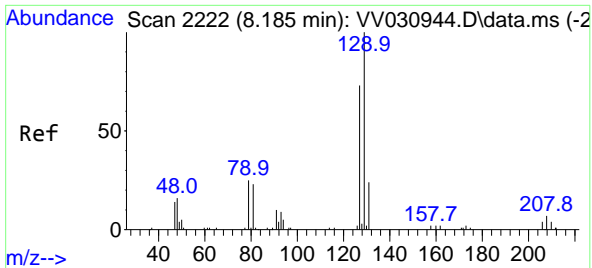
Tgt Ion: 75 Resp: 1020
 Ion Ratio Lower Upper
 75 100
 77 40.4 21.6 40.0#



#47
 Tetrachloroethene
 Concen: 5.444 ug/L
 RT: 7.912 min Scan# 2137
 Delta R.T. -0.003 min
 Lab File: VV030954.D
 Acq: 01 May 2023 14:40

Tgt Ion:164 Resp: 45251
 Ion Ratio Lower Upper
 164 100
 129 91.4 60.5 112.3
 131 87.0 60.8 112.8
 166 127.3 85.9 159.5

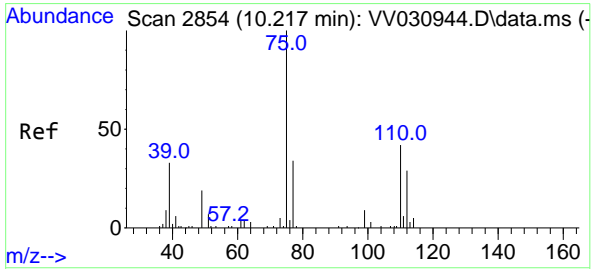
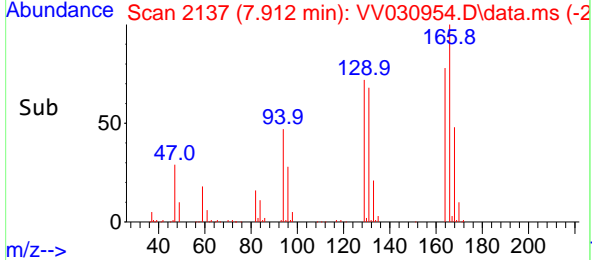
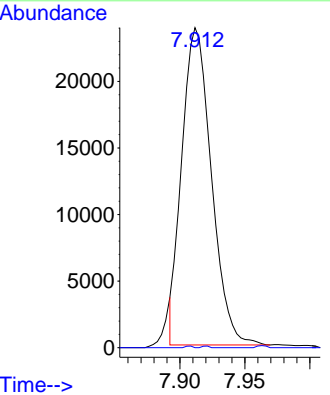
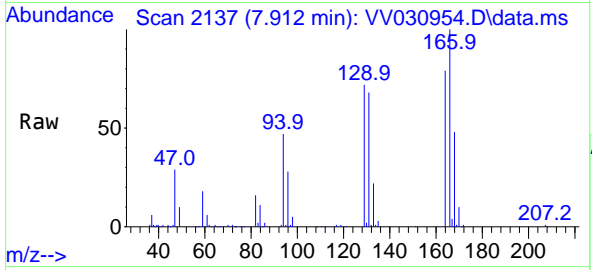




#49
 Dibromochloromethane
 Concen: 5.199 ug/L
 RT: 7.912 min Scan# 2137
 Delta R.T. -0.273 min
 Lab File: VV030954.D
 Acq: 01 May 2023 14:40

Instrument : MSVOA_V
 ClientSampleId : HOA39

Tgt Ion:129 Resp: 37626
 Ion Ratio Lower Upper
 129 100
 127 0.0 55.3 102.7#



#61
 1,2,3-Trichloropropane
 Concen: 1.680 ug/L
 RT: 11.194 min Scan# 3158
 Delta R.T. 0.978 min
 Lab File: VV030954.D
 Acq: 01 May 2023 14:40

Tgt Ion: 75 Resp: 7024
 Ion Ratio Lower Upper
 75 100
 77 38.8 25.3 37.9#
 110 4.6 34.0 51.0#

