

Data Path : Z:\VOASRV\HPCHEM1\MSVOA V\DATA\VV050219\
 Data File : VV010645.D
 Acq On : 03 May 2019 03:23
 Operator : SY/MD
 Sample : K2603-18
 Misc : 5.01G/10ML/MSVOA V/SOIL
 ALS Vial : 1 Sample Multiplier: 1

Instrument :
 MSVOA_V
 ClientSampleId :
 GAJ70

Integration Parameters: LSCINT.P

Integrator: RTE
 Smoothing : OFF
 Sampling : 1
 Start Thrs: 0.2
 Stop Thrs : 0

Filtering: 5
 Min Area: 0 % of largest Peak
 Max Peaks: 100
 Peak Location: TOP

If leading or trailing edge < 100 prefer < Baseline drop else tangent >
 Peak separation: 5

Method : Z:\VOASRV\HPCHEM1\MSVOA_V\METHOD\SOM2VLM050219S.M
 Title : VOC Analysis

Signal : TIC

peak #	R.T. min	first scan	max scan	last scan	PK TY	peak height	corr. area	corr. % max.	% of total
1	2.122	313	321	332	rVB	10816	14888	8.59%	1.806%
2	2.534	442	449	457	rVB2	1973	2961	1.71%	0.359%
3	2.743	510	514	516	rBV2	269	198	0.11%	0.024%
4	3.013	592	598	604	rBV2	290	356	0.21%	0.043%
5	3.064	611	614	615	rBV2	259	140	0.08%	0.017%
6	3.151	638	641	647	rBV2	236	261	0.15%	0.032%
7	3.238	666	668	673	rVB2	280	240	0.14%	0.029%
8	3.293	681	685	686	rBV2	214	174	0.10%	0.021%
9	3.325	691	695	696	rBV	166	123	0.07%	0.015%
10	3.444	728	732	734	rBV	220	153	0.09%	0.019%
11	3.601	778	781	784	rBV	357	276	0.16%	0.033%
12	3.624	784	788	791	rBV2	242	206	0.12%	0.025%
13	3.746	822	826	829	rBV2	180	149	0.09%	0.018%
14	3.769	829	833	836	rBV	185	179	0.10%	0.022%
15	3.830	846	852	855	rBV2	290	321	0.19%	0.039%
16	4.106	935	938	944	rBV	418	474	0.27%	0.058%
17	4.196	964	966	969	rVB	173	112	0.06%	0.014%
18	4.219	970	973	976	rBV	199	151	0.09%	0.018%
19	4.396	1011	1028	1049	rVV2	13835	34947	20.16%	4.240%
20	4.556	1076	1078	1082	rVB2	231	137	0.08%	0.017%
21	4.630	1094	1101	1103	rBV2	222	253	0.15%	0.031%
22	4.691	1117	1120	1124	rBV	204	172	0.10%	0.021%
23	4.740	1130	1135	1139	rBV2	201	200	0.12%	0.024%
24	4.900	1181	1185	1191	rBV2	344	365	0.21%	0.044%
25	4.978	1205	1209	1210	rBV2	218	151	0.09%	0.018%
26	5.093	1229	1245	1271	rBV5	30730	79092	45.64%	9.595%
27	5.183	1271	1273	1275	rBV2	344	202	0.12%	0.025%
28	5.302	1307	1310	1313	rVV2	356	263	0.15%	0.032%
29	5.335	1317	1320	1325	rBV2	158	219	0.13%	0.027%
30	5.450	1354	1356	1359	rVB	278	161	0.09%	0.020%
31	5.473	1359	1363	1366	rBV2	224	172	0.10%	0.021%
32	5.502	1366	1372	1375	rBV2	285	289	0.17%	0.035%
33	5.537	1380	1383	1385	rBV2	231	147	0.08%	0.018%
34	5.572	1390	1394	1396	rBV2	210	152	0.09%	0.018%

Data Path : Z:\VOASRV\HPCHEM1\MSVOA V\DATA\VV050219\
 Data File : VV010645.D
 Acq On : 03 May 2019 03:23
 Operator : SY/MD
 Sample : K2603-18
 Misc : 5.01G/10ML/MSVOA V/SOIL
 ALS Vial : 1 Sample Multiplier: 1

Instrument :
 MSVOA_V
 ClientSampleId :
 GAJ70

Integration Parameters: LSCINT.P

Integrator: RTE
 Smoothing : OFF
 Sampling : 1
 Start Thrs: 0.2
 Stop Thrs : 0

Filtering: 5
 Min Area: 0 % of largest Peak
 Max Peaks: 100
 Peak Location: TOP

If leading or trailing edge < 100 prefer < Baseline drop else tangent >
 Peak separation: 5

Method : Z:\VOASRV\HPCHEM1\MSVOA_V\METHOD\SOM2VLM050219S.M
 Title : VOC Analysis

35	5.662	1411	1422	1441	rVB2	22433	42923	24.77%	5.207%
36	5.814	1466	1469	1471	rVB2	331	156	0.09%	0.019%
37	5.830	1471	1474	1475	rBV	194	102	0.06%	0.012%
38	5.942	1505	1509	1511	rBV3	535	399	0.23%	0.048%
39	5.984	1518	1522	1524	rBV	329	256	0.15%	0.031%
40	6.000	1524	1527	1529	rBV2	176	128	0.07%	0.016%
41	6.116	1552	1563	1580	rVB2	20365	39860	23.00%	4.836%
42	6.283	1612	1615	1617	rBV	244	118	0.07%	0.014%
43	6.299	1617	1620	1625	rVV2	190	220	0.13%	0.027%
44	6.389	1646	1648	1652	rBV2	284	200	0.12%	0.024%
45	6.569	1701	1704	1709	rBV2	272	234	0.14%	0.028%
46	6.592	1709	1711	1716	rBV2	205	209	0.12%	0.025%
47	6.617	1716	1719	1724	rBV2	200	236	0.14%	0.029%
48	6.682	1734	1739	1740	rBV	237	186	0.11%	0.023%
49	6.695	1742	1743	1749	rVB2	310	231	0.13%	0.028%
50	6.836	1784	1787	1790	rBV	172	159	0.09%	0.019%
51	6.878	1796	1800	1803	rVB	278	247	0.14%	0.030%
52	6.897	1803	1806	1809	rBV	245	167	0.10%	0.020%
53	6.913	1809	1811	1814	rBV2	173	110	0.06%	0.013%
54	7.029	1838	1847	1868	rVB2	8743	15551	8.97%	1.887%
55	7.142	1877	1882	1886	rBV	253	255	0.15%	0.031%
56	7.267	1917	1921	1926	rVB2	324	294	0.17%	0.036%
57	7.296	1926	1930	1933	rBV3	403	389	0.22%	0.047%
58	7.360	1940	1950	1962	rBV	29934	52262	30.16%	6.340%
59	7.572	2012	2016	2021	rBV2	175	160	0.09%	0.019%
60	7.595	2021	2023	2026	rVV2	166	120	0.07%	0.015%
61	7.666	2035	2045	2055	rBV4	4654	8728	5.04%	1.059%
62	7.852	2099	2103	2107	rBV2	434	497	0.29%	0.060%
63	7.977	2134	2142	2144	rBV3	697	816	0.47%	0.099%
64	8.035	2157	2160	2163	rVB2	332	213	0.12%	0.026%
65	8.093	2172	2178	2181	rVB	337	331	0.19%	0.040%
66	8.141	2182	2193	2208	rBV3	5521	11174	6.45%	1.356%
67	8.347	2249	2257	2259	rBV2	354	498	0.29%	0.060%
68	8.412	2272	2277	2281	rBV	434	440	0.25%	0.053%
69	8.453	2286	2290	2292	rBV	288	290	0.17%	0.035%
70	8.740	2375	2379	2384	rBV2	320	413	0.24%	0.050%
71	8.897	2417	2428	2441	rBV	33083	54245	31.30%	6.581%

Data Path : Z:\VOASRV\HPCHEM1\MSVOA V\DATA\VV050219\
 Data File : VV010645.D
 Acq On : 03 May 2019 03:23
 Operator : SY/MD
 Sample : K2603-18
 Misc : 5.01G/10ML/MSVOA V/SOIL
 ALS Vial : 1 Sample Multiplier: 1

Instrument :
 MSVOA_V
 ClientSampleId :
 GAJ70

Integration Parameters: LSCINT.P

Integrator: RTE
 Smoothing : OFF
 Sampling : 1
 Start Thrs: 0.2
 Stop Thrs : 0

Filtering: 5
 Min Area: 0 % of largest Peak
 Max Peaks: 100
 Peak Location: TOP

If leading or trailing edge < 100 prefer < Baseline drop else tangent >
 Peak separation: 5

Method : Z:\VOASRV\HPCHEM1\MSVOA_V\METHOD\SOM2VLM050219S.M
 Title : VOC Analysis

72	9.180	2508	2516	2528	rVB2	3839	5719	3.30%	0.694%
73	9.460	2597	2603	2606	rBV2	343	372	0.21%	0.045%
74	9.595	2635	2645	2664	rVB9	3055	7013	4.05%	0.851%
75	10.087	2791	2798	2804	rBV2	341	598	0.35%	0.073%
76	10.260	2843	2852	2863	rBV	17436	27712	15.99%	3.362%
77	10.498	2919	2926	2932	rBV3	777	1309	0.76%	0.159%
78	10.958	3063	3069	3078	rVB	4368	5769	3.33%	0.700%
79	11.029	3083	3091	3101	rBV3	4490	6383	3.68%	0.774%
80	11.083	3102	3108	3113	rVB3	923	1318	0.76%	0.160%
81	11.296	3165	3174	3190	rVB3	25243	40239	23.22%	4.882%
82	11.383	3194	3201	3210	rBV	1437	2028	1.17%	0.246%
83	11.473	3225	3229	3232	rBV2	303	295	0.17%	0.036%
84	11.518	3240	3243	3246	rBV2	287	232	0.13%	0.028%
85	11.672	3281	3291	3305	rBV	29225	45259	26.11%	5.491%
86	11.791	3319	3328	3342	rBV	20113	31553	18.21%	3.828%
87	12.038	3403	3405	3408	rBV	432	238	0.14%	0.029%
88	12.244	3461	3469	3474	rBV3	1696	2000	1.15%	0.243%
89	12.498	3546	3548	3549	rBV	576	221	0.13%	0.027%
90	12.929	3676	3682	3692	rVB4	2673	3767	2.17%	0.457%
91	12.997	3694	3703	3713	rVV2	7039	10128	5.84%	1.229%
92	13.103	3726	3736	3746	rBV4	8361	13200	7.62%	1.601%
93	13.263	3784	3786	3791	rVB3	682	384	0.22%	0.047%
94	13.312	3796	3801	3806	rBV5	796	958	0.55%	0.116%
95	13.550	3864	3875	3889	rBV	111964	173310	100.00%	21.025%
96	13.791	3946	3950	3960	rVB4	1481	1943	1.12%	0.236%
97	14.125	4052	4054	4055	rBV	450	213	0.12%	0.026%
98	14.415	4141	4144	4150	rBV3	471	453	0.26%	0.055%
99	14.685	4218	4228	4245	rVB	30458	47062	27.15%	5.709%
100	14.865	4275	4284	4298	rVB2	15132	23521	13.57%	2.853%

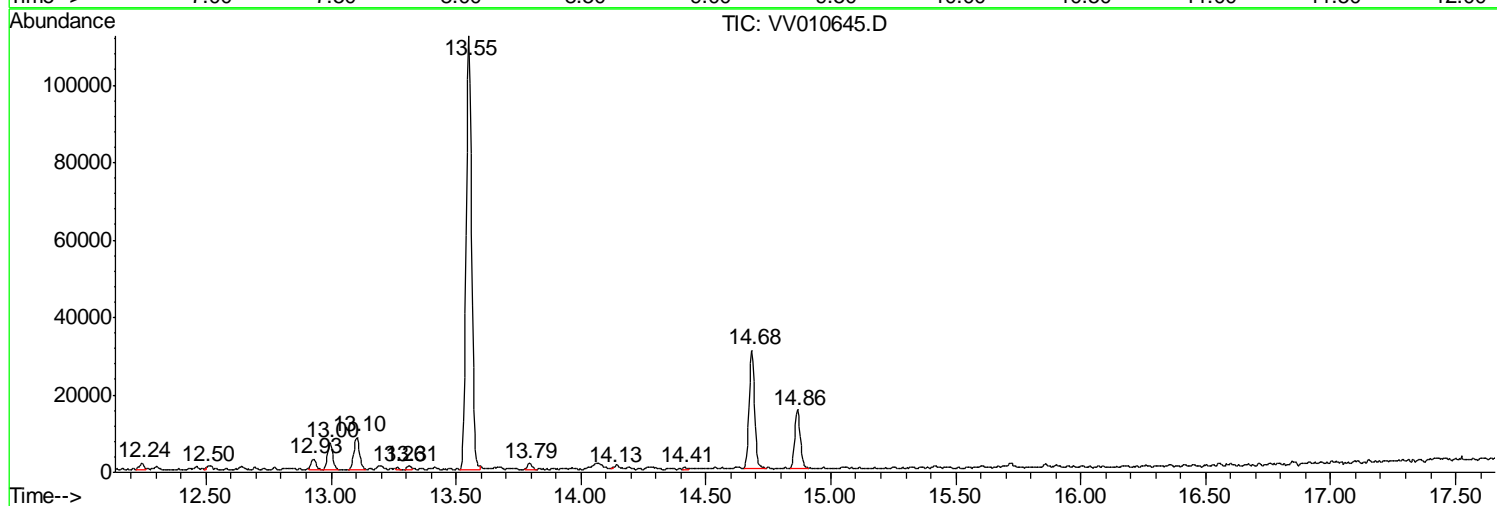
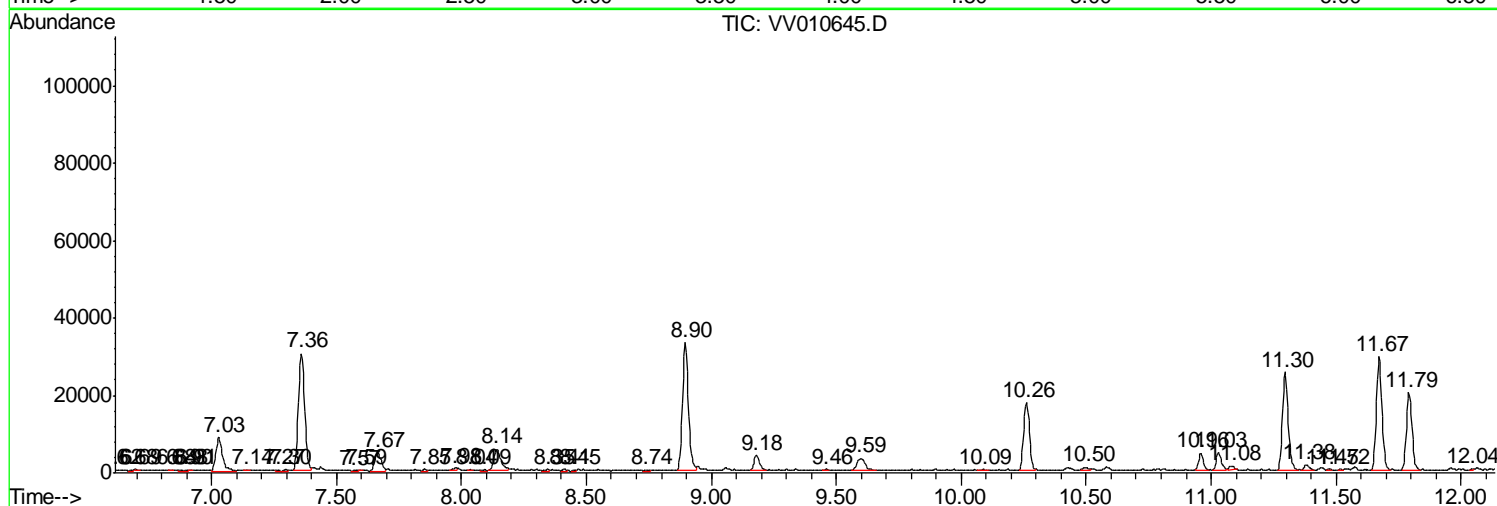
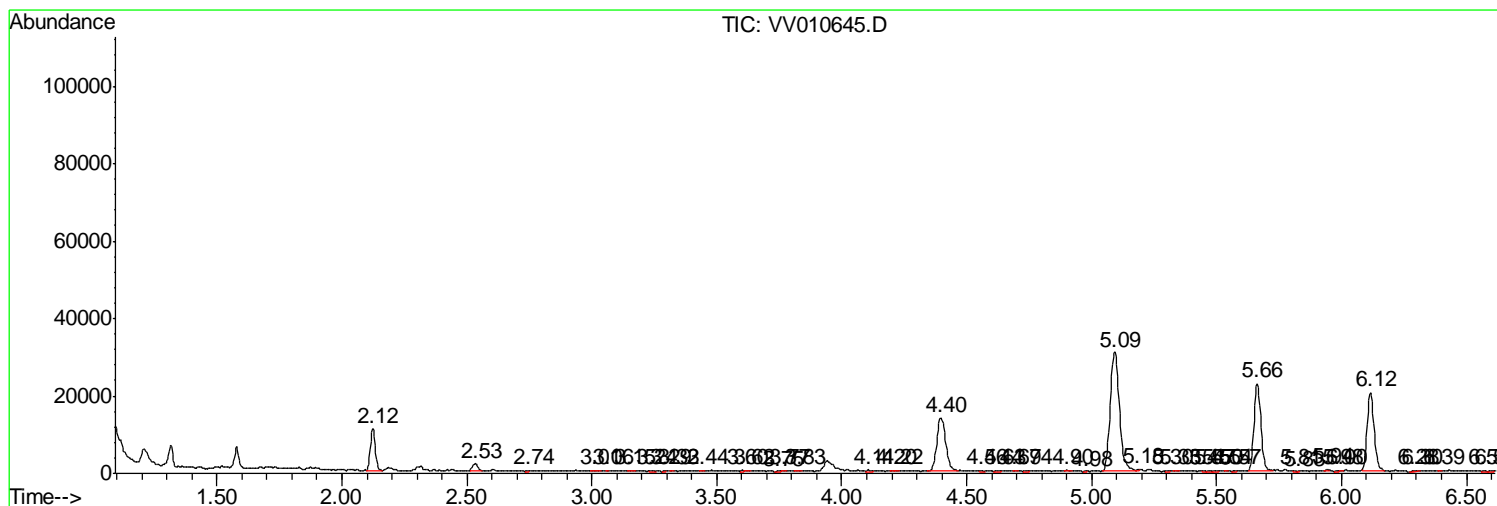
Sum of corrected areas: 824298

Data Path : Z:\VOASRV\HPCHEM1\MSVOA V\DATA\VV050219\
 Data File : VV010645.D
 Acq On : 03 May 2019 03:23
 Operator : SY/MD
 Sample : K2603-18
 Misc : 5.01G/10ML/MSVOA V/SOIL
 ALS Vial : 1 Sample Multiplier: 1

Instrument :
 MSVOA_V
ClientSampleId :
 GAJ70

Quant Method : Z:\VOASRV\HPCHEM1\MSVOA_V\METHOD\SOM2VLM050219S.M
 Quant Title : VOC Analysis

TIC Library : C:\DATABASE\NIST11.L
 TIC Integration Parameters: LSCINT.P



Data Path : Z:\VOASRV\HPCHEM1\MSVOA V\DATA\VV050219\
 Data File : VV010645.D
 Acq On : 03 May 2019 03:23
 Operator : SY/MD
 Sample : K2603-18
 Misc : 5.01G/10ML/MSVOA V/SOIL
 ALS Vial : 1 Sample Multiplier: 1

Instrument :
 MSVOA_V
 ClientSampleID :
 GAJ70

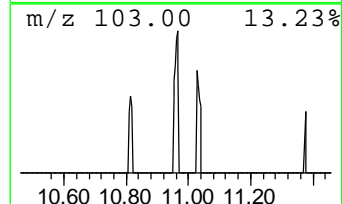
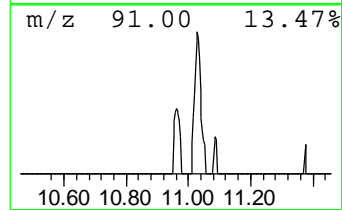
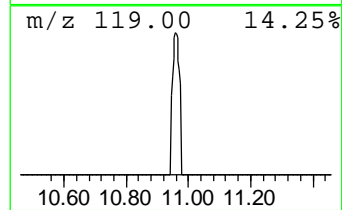
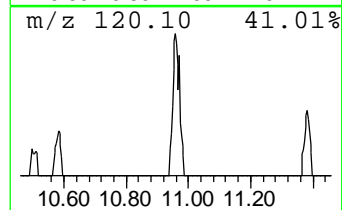
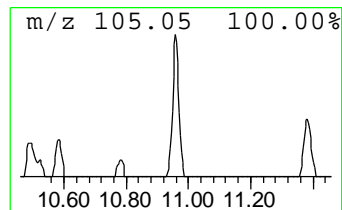
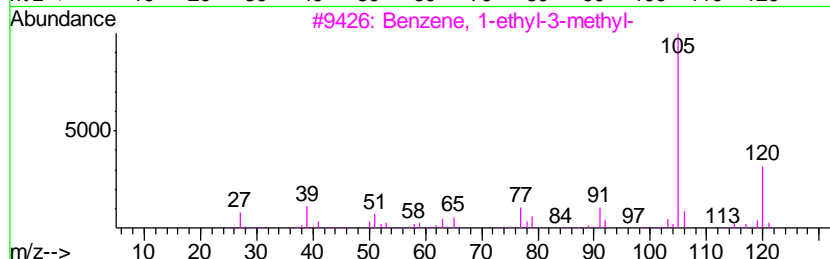
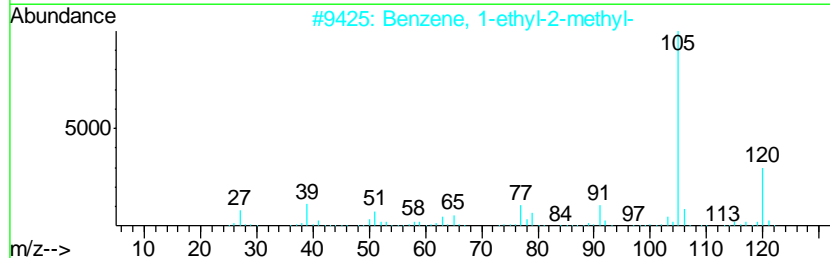
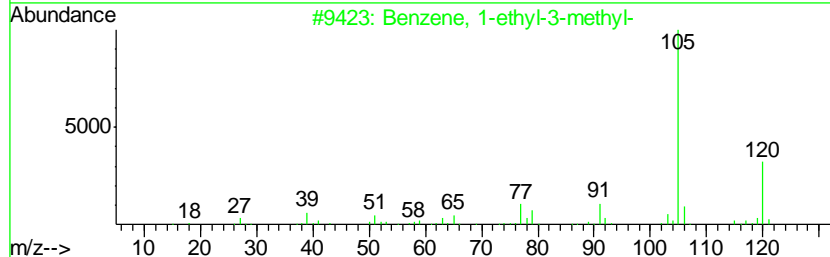
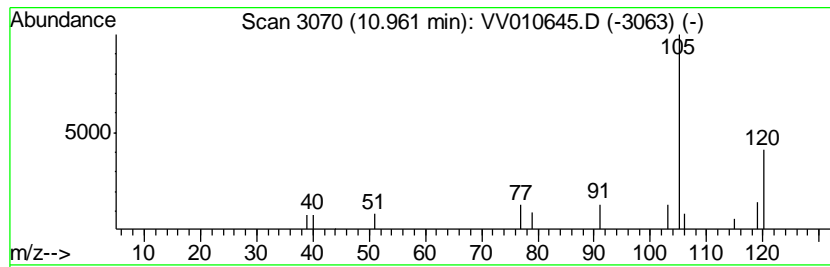
Quant Method : Z:\VOASRV\HPCHEM1\MSVOA_V\METHOD\SOM2VLM050219S.M
 Quant Title : VOC Analysis

TIC Library : C:\DATABASE\NIST11.L
 TIC Integration Parameters: LSCINT.P

 Peak Number 2 Benzene, 1-ethyl-3-methyl- Concentration Rank 9

R.T.	EstConc	Area	Relative to ISTD	R.T.
10.96	3.58 ug/L	5769	1,4-Dichlorobenzene-d4	11.30

Hit#	of	Tentative ID	MW	MolForm	CAS#	Qual
1	5	Benzene, 1-ethyl-3-methyl-	120	C9H12	000620-14-4	86
2		Benzene, 1-ethyl-2-methyl-	120	C9H12	000611-14-3	86
3		Benzene, 1-ethyl-3-methyl-	120	C9H12	000620-14-4	86
4		Benzene, 1-ethyl-2-methyl-	120	C9H12	000611-14-3	86
5		Benzene, 1-ethyl-3-methyl-	120	C9H12	000620-14-4	78



Data Path : Z:\VOASRV\HPCHEM1\MSVOA V\DATA\VV050219\
 Data File : VV010645.D
 Acq On : 03 May 2019 03:23
 Operator : SY/MD
 Sample : K2603-18
 Misc : 5.01G/10ML/MSVOA V/SOIL
 ALS Vial : 1 Sample Multiplier: 1

Instrument :
 MSVOA_V
 ClientSampleID :
 GAJ70

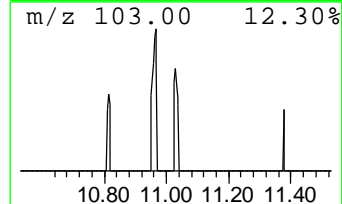
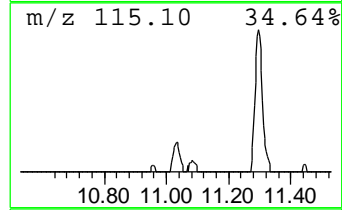
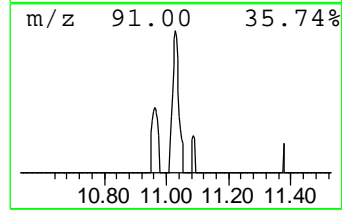
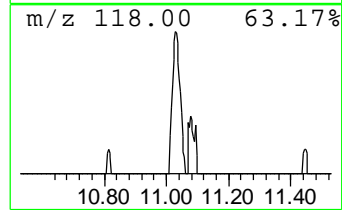
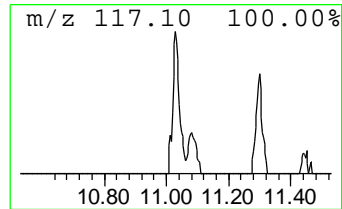
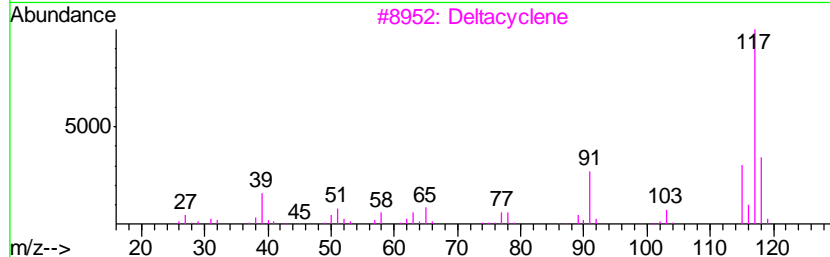
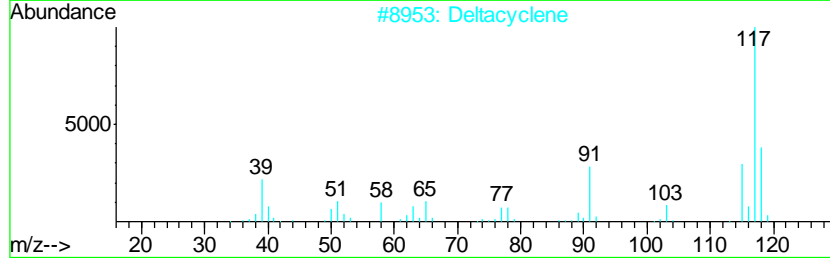
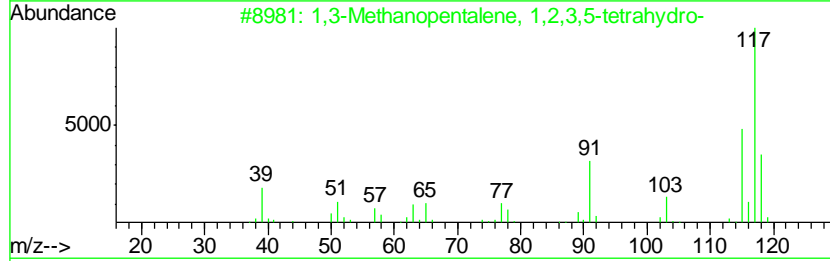
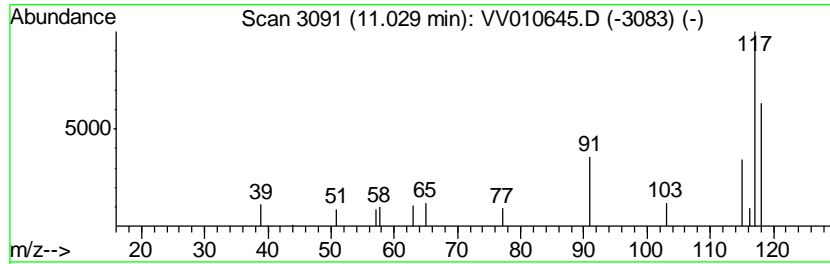
Quant Method : Z:\VOASRV\HPCHEM1\MSVOA_V\METHOD\SOM2VLM050219S.M
 Quant Title : VOC Analysis

TIC Library : C:\DATABASE\NIST11.L
 TIC Integration Parameters: LSCINT.P

 Peak Number 3 1,3-Methanopentalene, 1,2,3... Concentration Rank 8

R.T.	EstConc	Area	Relative to ISTD	R.T.
11.03	3.97 ug/L	6383	1,4-Dichlorobenzene-d4	11.30

Hit#	of	Tentative ID	MW	MolForm	CAS#	Qual
1	5	1,3-Methanopentalene, 1,2,3,5-te...	118	C9H10	128600-88-4	59
2		Deltacyclene	118	C9H10	007785-10-6	56
3		Deltacyclene	118	C9H10	007785-10-6	42
4		Benzene, (2-bromocyclopropyl)-	196	C9H9Br	036617-02-4	40
5		Benzene, (2-bromocyclopropyl)-	196	C9H9Br	036617-02-4	37



Data Path : Z:\VOASRV\HPCHEM1\MSVOA V\DATA\VV050219\
 Data File : VV010645.D
 Acq On : 03 May 2019 03:23
 Operator : SY/MD
 Sample : K2603-18
 Misc : 5.01G/10ML/MSVOA V/SOIL
 ALS Vial : 1 Sample Multiplier: 1

Instrument :
 MSVOA_V
 ClientSampleID :
 GAJ70

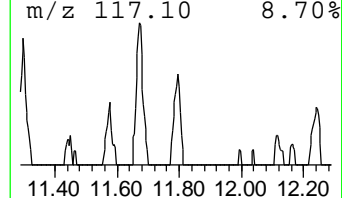
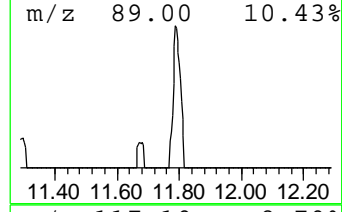
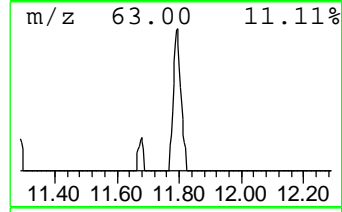
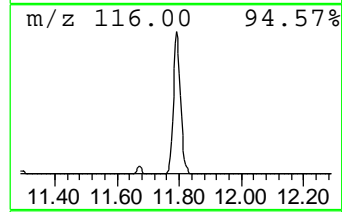
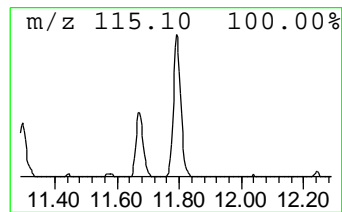
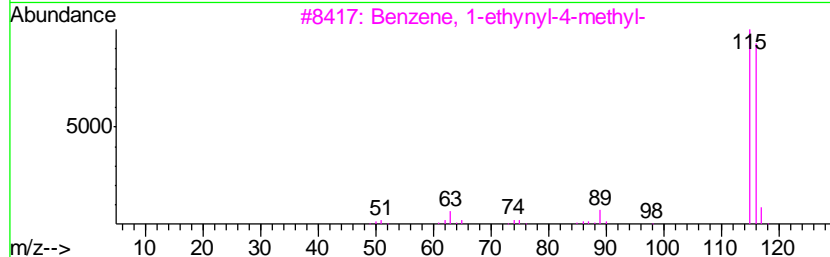
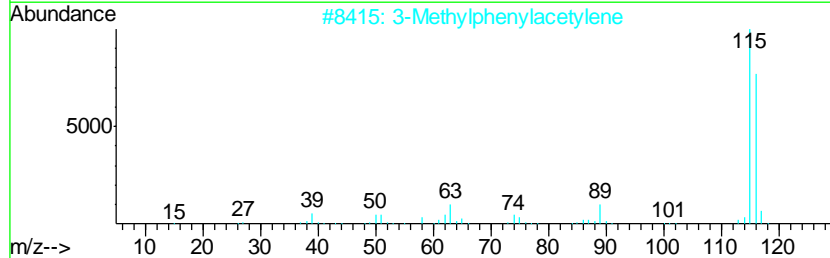
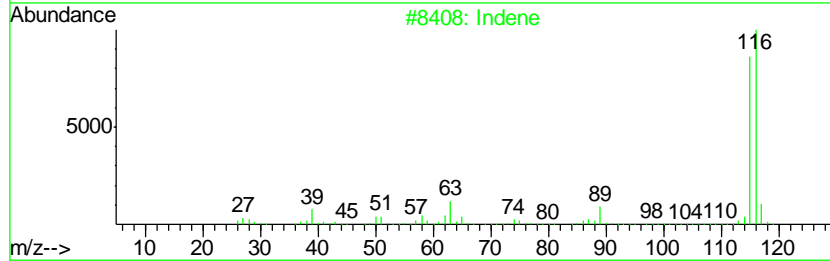
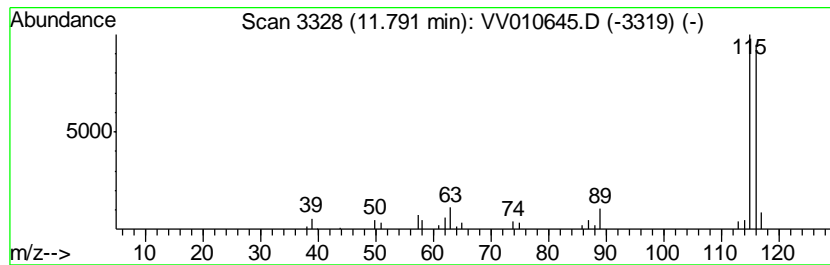
Quant Method : Z:\VOASRV\HPCHEM1\MSVOA_V\METHOD\SOM2VLM050219S.M
 Quant Title : VOC Analysis

TIC Library : C:\DATABASE\NIST11.L
 TIC Integration Parameters: LSCINT.P

 Peak Number 5 Indene Concentration Rank 3

R.T.	EstConc	Area	Relative to ISTD	R.T.
11.79	19.60 ug/L	31553	1,4-Dichlorobenzene-d4	11.30

Hit#	of	Tentative ID	MW	MolForm	CAS#	Qual
1	5	Indene	116	C9H8	000095-13-6	95
2		3-Methylphenylacetylene	116	C9H8	000766-82-5	94
3		Benzene, 1-ethynyl-4-methyl-	116	C9H8	000766-97-2	91
4		Benzene, 1-propynyl-	116	C9H8	000673-32-5	91
5		Benzene, 1-propynyl-	116	C9H8	000673-32-5	91



Data Path : Z:\VOASRV\HPCHEM1\MSVOA V\DATA\VV050219\
 Data File : VV010645.D
 Acq On : 03 May 2019 03:23
 Operator : SY/MD
 Sample : K2603-18
 Misc : 5.01G/10ML/MSVOA V/SOIL
 ALS Vial : 1 Sample Multiplier: 1

Instrument :
 MSVOA_V
 ClientSampleID :
 GAJ70

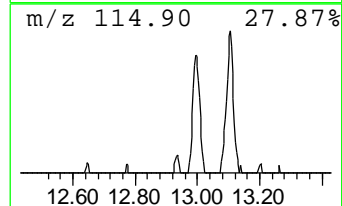
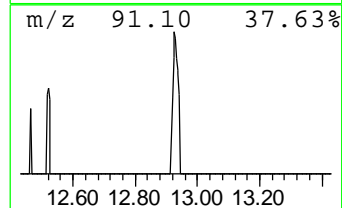
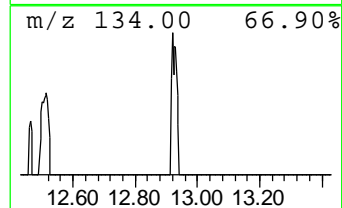
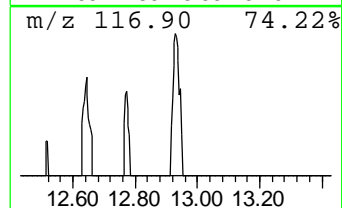
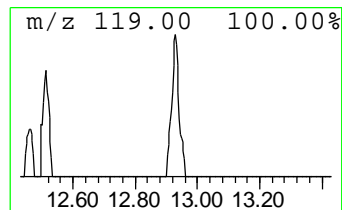
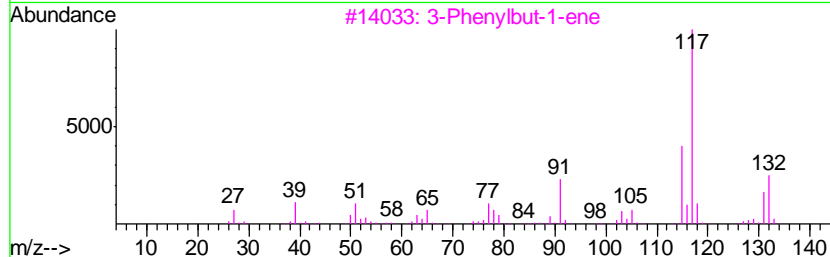
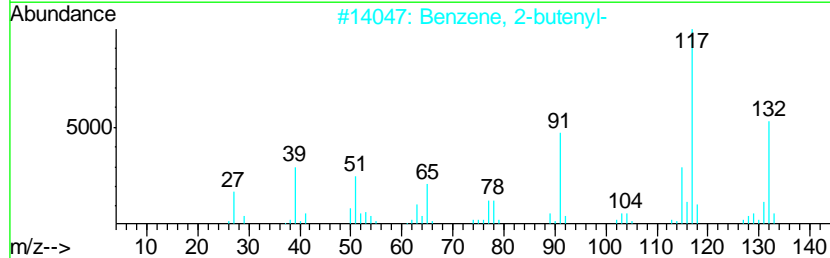
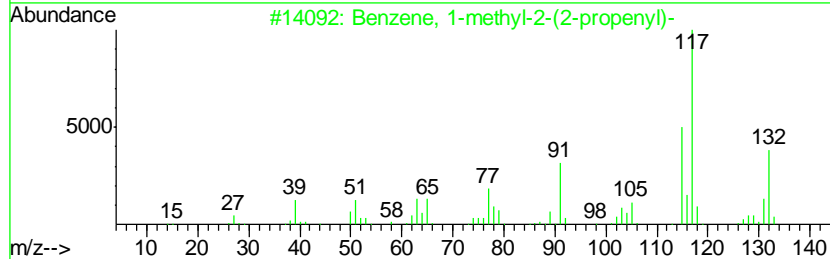
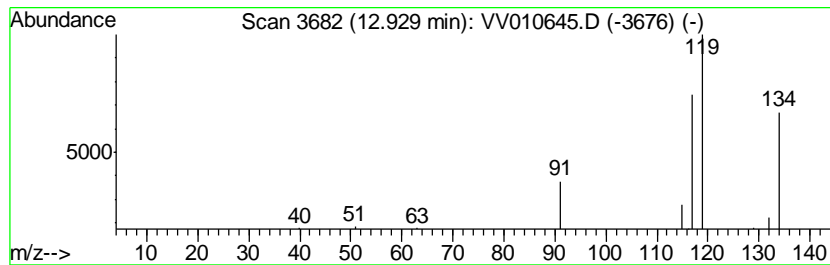
Quant Method : Z:\VOASRV\HPCHEM1\MSVOA_V\METHOD\SOM2VLM050219S.M
 Quant Title : VOC Analysis

TIC Library : C:\DATABASE\NIST11.L
 TIC Integration Parameters: LSCINT.P

 Peak Number 6 unknown-01 Concentration Rank 10

R.T.	EstConc	Area	Relative to ISTD	R.T.
12.93	2.34 ug/L	3767	1,4-Dichlorobenzene-d4	11.30

Hit#	of	Tentative ID	MW	MolForm	CAS#	Qual
1	5	Benzene, 1-methyl-2-(2-propenyl)-	132	C10H12	001587-04-8	43
2		Benzene, 2-butenyl-	132	C10H12	001560-06-1	25
3		3-Phenylbut-1-ene	132	C10H12	000934-10-1	9
4		3a,6-Methano-3aH-indene, 2,3,6,7...	132	C10H12	098640-29-0	9
5		(E)-1-Phenyl-1-butene	132	C10H12	001005-64-7	9



Data Path : Z:\VOASRV\HPCHEM1\MSVOA V\DATA\VV050219\
 Data File : VV010645.D
 Acq On : 03 May 2019 03:23
 Operator : SY/MD
 Sample : K2603-18
 Misc : 5.01G/10ML/MSVOA V/SOIL
 ALS Vial : 1 Sample Multiplier: 1

Instrument :
 MSVOA_V
 ClientSampled :
 GAJ70

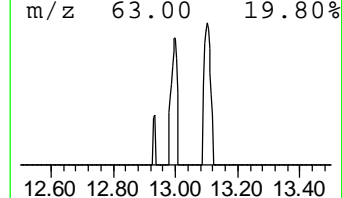
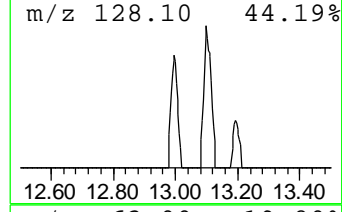
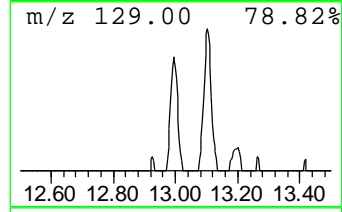
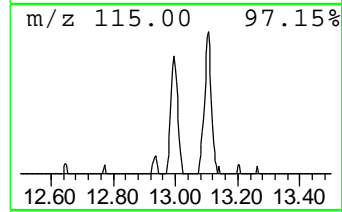
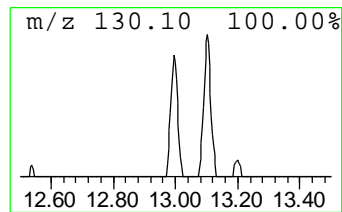
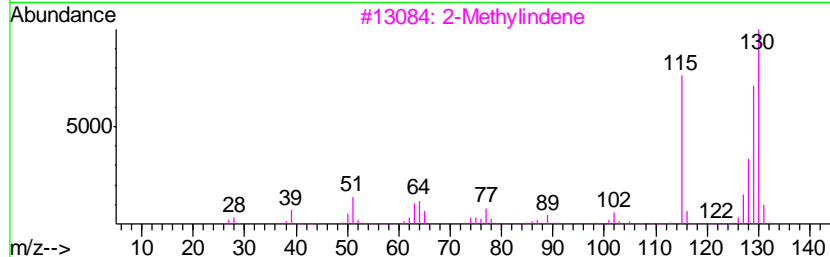
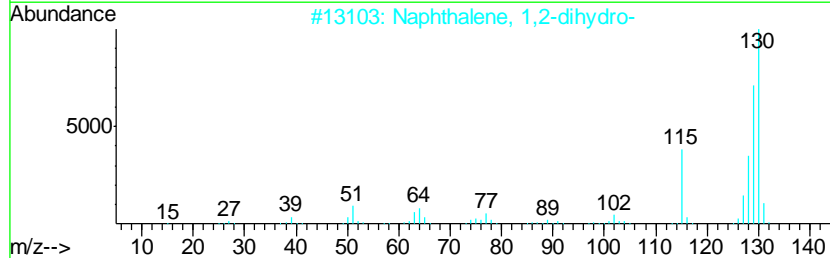
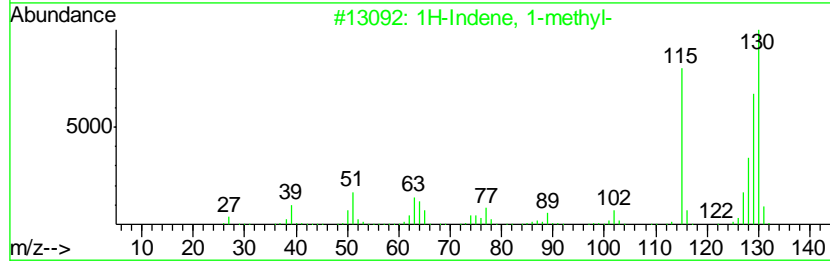
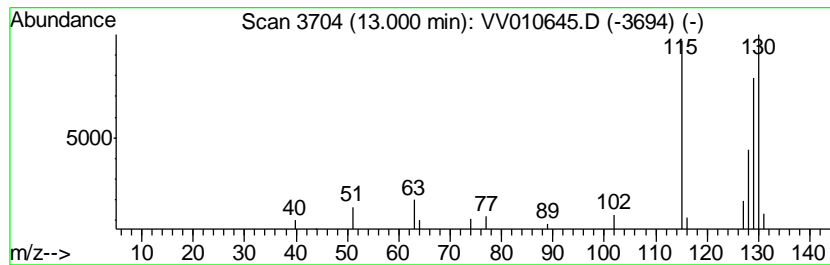
Quant Method : Z:\VOASRV\HPCHEM1\MSVOA_V\METHOD\SOM2VLM050219S.M
 Quant Title : VOC Analysis

TIC Library : C:\DATABASE\NIST11.L
 TIC Integration Parameters: LSCINT.P

 Peak Number 7 1H-Indene, 1-methyl- Concentration Rank 7

R.T.	EstConc	Area	Relative to ISTD	R.T.
13.00	6.29 ug/L	10128	1,4-Dichlorobenzene-d4	11.30

Hit#	of	Tentative ID	MW	MolForm	CAS#	Qual
1	5	1H-Indene, 1-methyl-	130	C10H10	000767-59-9	94
2		Naphthalene, 1,2-dihydro-	130	C10H10	000447-53-0	87
3		2-Methylindene	130	C10H10	002177-47-1	87
4		Benzene, 1-butynyl-	130	C10H10	000622-76-4	87
5		Benzene, (1-methyl-2-cyclopropen...	130	C10H10	065051-83-4	87



Data Path : Z:\VOASRV\HPCHEM1\MSVOA V\DATA\VV050219\
 Data File : VV010645.D
 Acq On : 03 May 2019 03:23
 Operator : SY/MD
 Sample : K2603-18
 Misc : 5.01G/10ML/MSVOA V/SOIL
 ALS Vial : 1 Sample Multiplier: 1

Instrument :
 MSVOA_V
 ClientSampleID :
 GAJ70

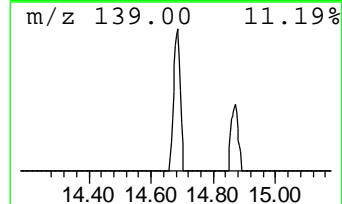
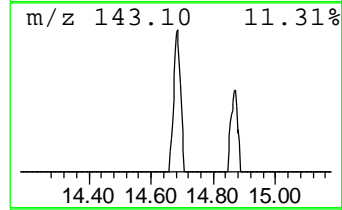
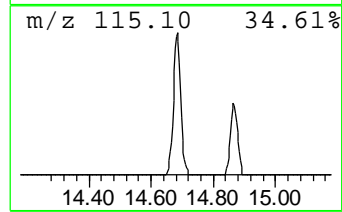
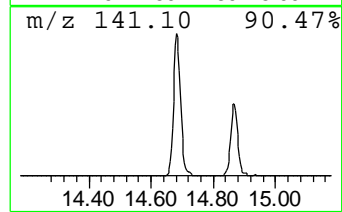
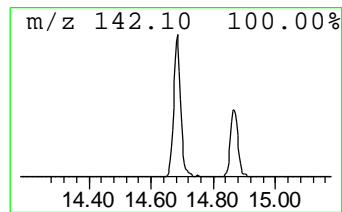
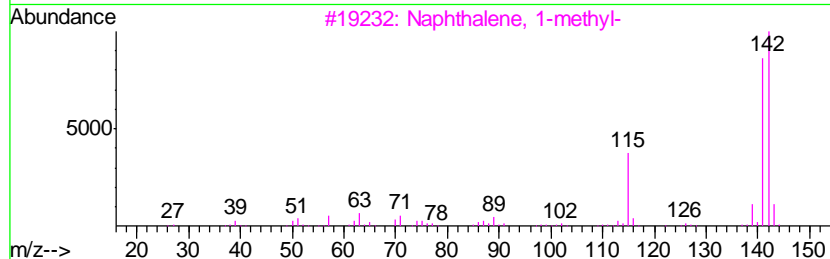
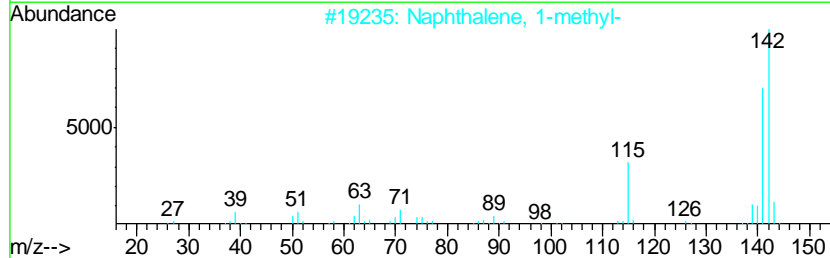
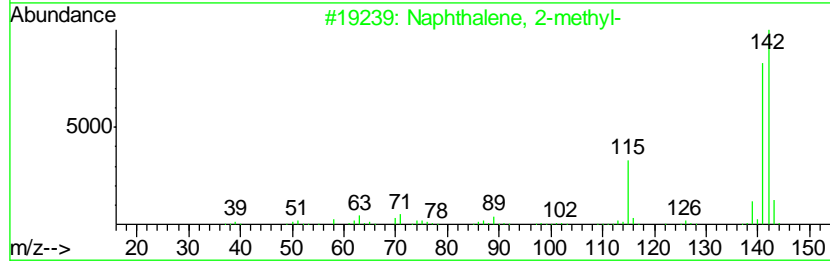
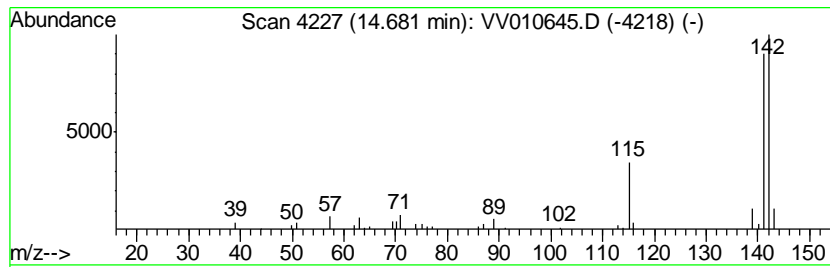
Quant Method : Z:\VOASRV\HPCHEM1\MSVOA_V\METHOD\SOM2VLM050219S.M
 Quant Title : VOC Analysis

TIC Library : C:\DATABASE\NIST11.L
 TIC Integration Parameters: LSCINT.P

 Peak Number 10 Naphthalene, 1-methyl- Concentration Rank 2

R.T.	EstConc	Area	Relative to ISTD	R.T.
14.68	29.24 ug/L	47062	1,4-Dichlorobenzene-d4	11.30

Hit#	of	Tentative ID	MW	MolForm	CAS#	Qual
1	5	Naphthalene, 2-methyl-	142	C11H10	000091-57-6	95
2		Naphthalene, 1-methyl-	142	C11H10	000090-12-0	91
3		Naphthalene, 1-methyl-	142	C11H10	000090-12-0	91
4		Naphthalene, 1-methyl-	142	C11H10	000090-12-0	91
5		Naphthalene, 2-methyl-	142	C11H10	000091-57-6	91



Data Path : Z:\VOASRV\HPCHEM1\MSVOA V\DATA\VV050219\
 Data File : VV010645.D
 Acq On : 03 May 2019 03:23
 Operator : SY/MD
 Sample : K2603-18
 Misc : 5.01G/10ML/MSVOA V/SOIL
 ALS Vial : 1 Sample Multiplier: 1

Instrument :
 MSVOA_V
 ClientSampled :
 GAJ70

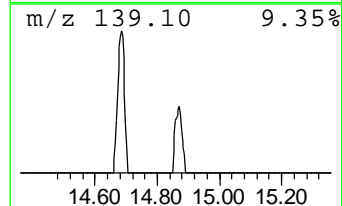
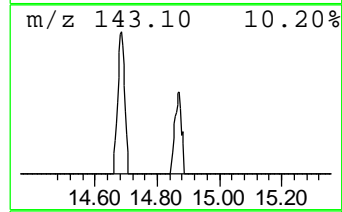
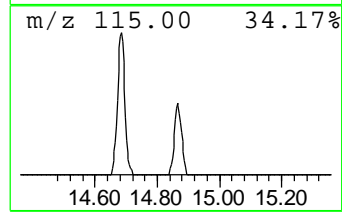
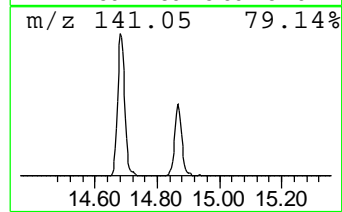
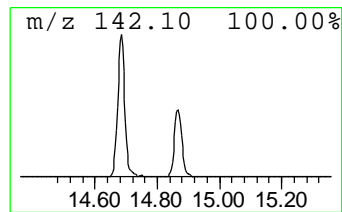
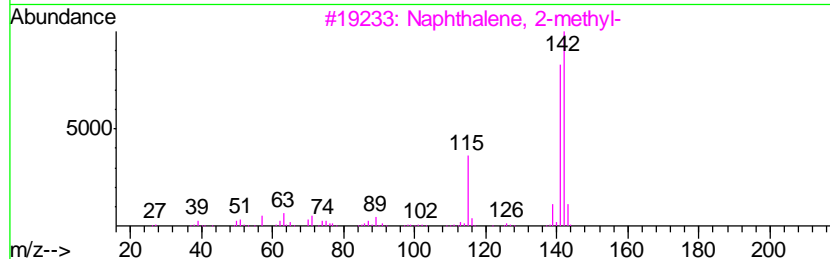
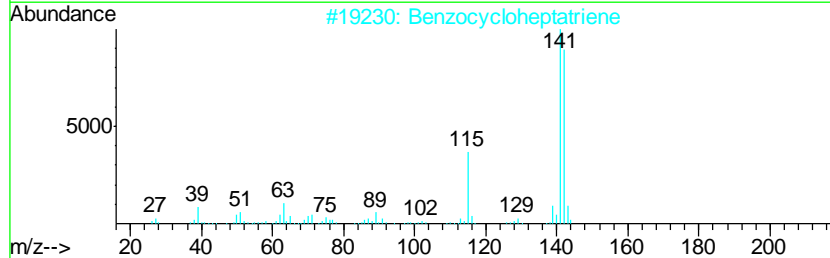
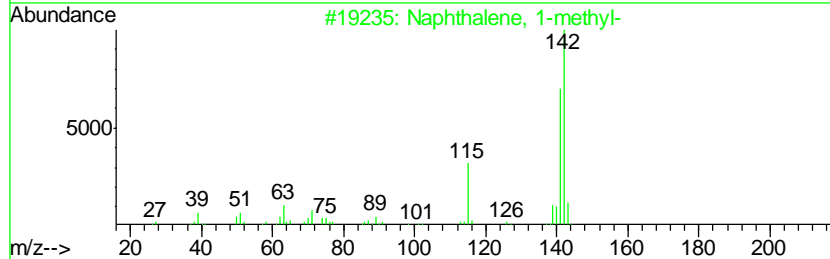
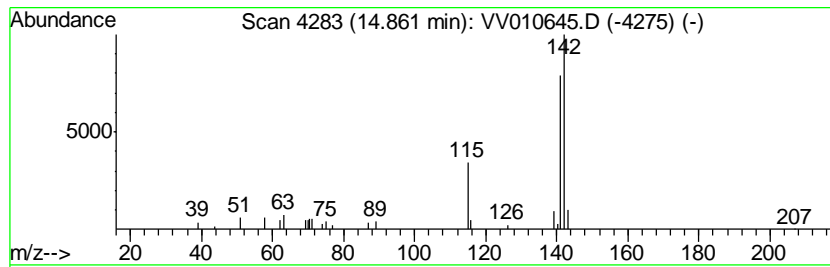
Quant Method : Z:\VOASRV\HPCHEM1\MSVOA_V\METHOD\SOM2VLM050219S.M
 Quant Title : VOC Analysis

TIC Library : C:\DATABASE\NIST11.L
 TIC Integration Parameters: LSCINT.P

 Peak Number 11 Naphthalene, 1-methyl- Concentration Rank 4

R.T.	EstConc	Area	Relative to ISTD	R.T.
14.86	14.61 ug/L	23521	1,4-Dichlorobenzene-d4	11.30

Hit#	of	Tentative ID	MW	MolForm	CAS#	Qual
1	5	Naphthalene, 1-methyl-	142	C11H10	000090-12-0	94
2		Benzocycloheptatriene	142	C11H10	000264-09-5	91
3		Naphthalene, 2-methyl-	142	C11H10	000091-57-6	91
4		Naphthalene, 1-methyl-	142	C11H10	000090-12-0	91
5		Naphthalene, 2-methyl-	142	C11H10	000091-57-6	91



Data Path : Z:\VOASRV\HPCHEM1\MSVOA_V\DATA\VV050219\
 Data File : VV010645.D
 Acq On : 03 May 2019 03:23
 Operator : SY/MD
 Sample : K2603-18
 Misc : 5.01G/10ML/MSVOA_V/SOIL
 ALS Vial : 1 Sample Multiplier: 1

Instrument :
 MSVOA_V
 ClientSampleId :
 GAJ70

Quant Method : Z:\VOASRV\HPCHEM1\MSVOA_V\METHOD\SOM2VLM050219S.M
 Quant Title : VOC Analysis

TIC Library : C:\DATABASE\NIST11.L
 TIC Integration Parameters: LSCINT.P

TIC Top Hit name	RT	EstConc	Units	Response	--Internal Standard--			
					#	RT	Resp	Conc
Benzene, 1-ethyl-...	10.96	3.6	ug/L	5769	3	11.30	40239	25.0
1,3-Methanopental...	11.03	4.0	ug/L	6383	3	11.30	40239	25.0
Indene	11.79	19.6	ug/L	31553	3	11.30	40239	25.0
unknown-01	12.93	2.3	ug/L	3767	3	11.30	40239	25.0
1H-Indene, 1-methyl-	13.00	6.3	ug/L	10128	3	11.30	40239	25.0
Naphthalene, 1-me...	14.68	29.2	ug/L	47062	3	11.30	40239	25.0
Naphthalene, 1-me...	14.86	14.6	ug/L	23521	3	11.30	40239	25.0