

Data Path : W:\HPCHEM1\MSVOA V\DATA\VV050318\
 Data File : VV005770.D
 Acq On : 03 May 2018 18:44
 Operator : SY/MD
 Sample : J2551-08
 Misc : 25.0 mL/MSVOA V/WATER
 ALS Vial : 1 Sample Multiplier: 1

Integration Parameters: rteint.p
 Integrator: RTE
 Smoothing : ON Filtering: 5
 Sampling : 1 Min Area: 3 % of largest Peak
 Start Thrs: 0.1 Max Peaks: 100
 Stop Thrs : 0 Peak Location: TOP

If leading or trailing edge < 100 prefer < Baseline drop else tangent >
 Peak separation: 5

Method : W:\HPCHEM1\MSVOA V\METHOD\SOMVTR043018WMA.M
 Title : TRACE VOA SOM01.0

Signal : TIC

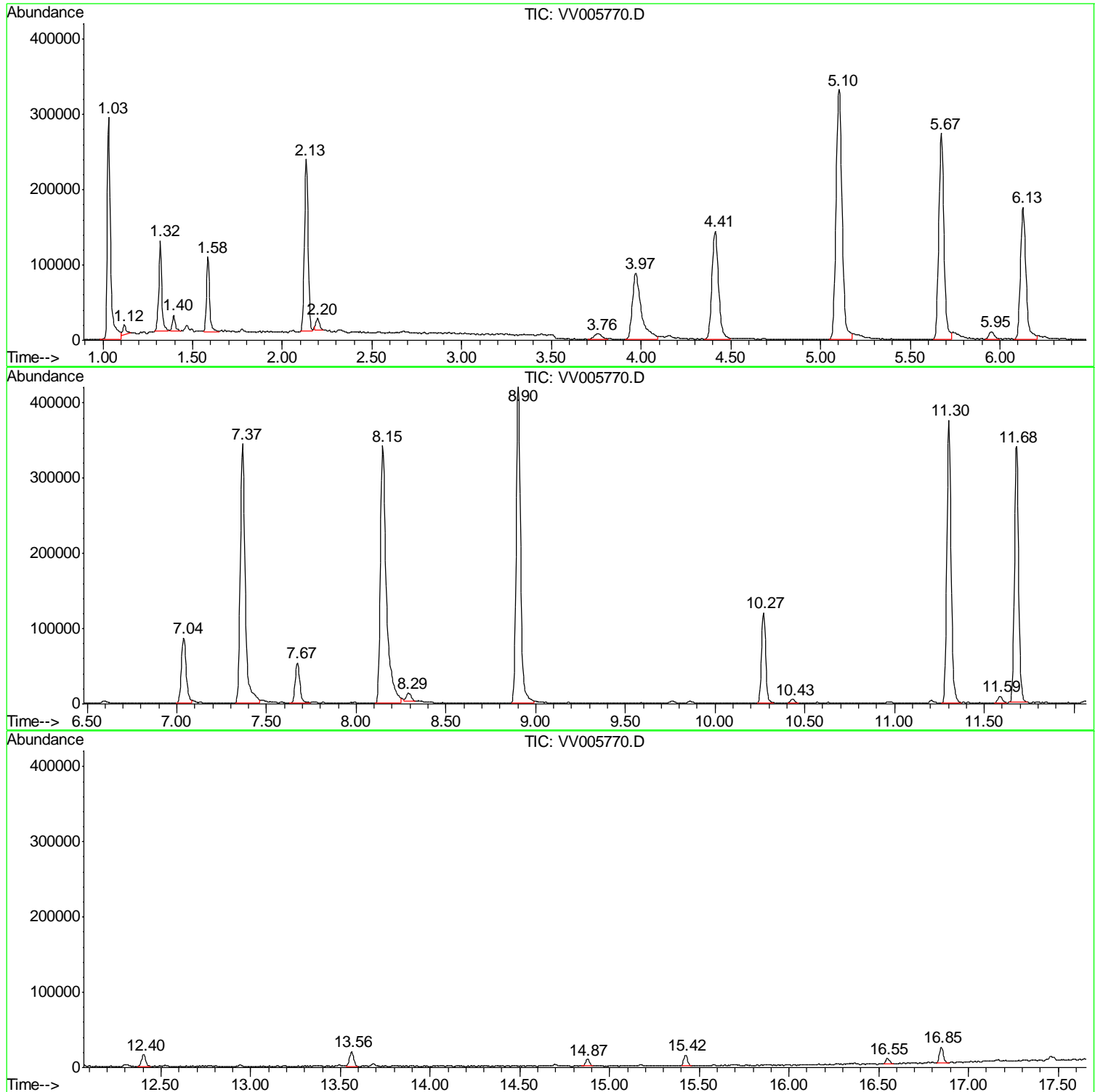
peak #	R.T. min	first scan	max scan	last scan	PK TY	peak height	corr. area	corr. % max.	% of total
1	1.032	29	44	66	rBV	295401	376784	47.33%	5.068%
2	1.119	66	71	82	rVB2	11511	16627	2.09%	0.224%
3	1.321	124	134	147	rBV	120310	140719	17.68%	1.893%
4	1.395	151	157	169	rVB	21110	24111	3.03%	0.324%
5	1.585	209	216	235	rVB	99432	121769	15.30%	1.638%
6	2.132	377	386	397	rBV	228601	326053	40.96%	4.385%
7	2.196	401	406	415	rVB	15729	22352	2.81%	0.301%
8	3.759	875	892	909	rBV5	7084	21406	2.69%	0.288%
9	3.971	940	958	996	rBV2	88311	310320	38.98%	4.174%
10	4.411	1077	1095	1122	rBV2	143251	363366	45.64%	4.887%
11	5.103	1292	1310	1333	rBV2	332641	778029	97.73%	10.465%
12	5.672	1473	1487	1505	rBV	274446	558607	70.17%	7.513%
13	5.951	1564	1574	1588	rBV5	9586	19044	2.39%	0.256%
14	6.128	1613	1629	1653	rBV	175477	373534	46.92%	5.024%
15	7.038	1899	1912	1926	rBV	87304	161585	20.30%	2.173%
16	7.366	2001	2014	2044	rBV	344497	657050	82.53%	8.837%
17	7.672	2096	2109	2131	rBV2	53827	96983	12.18%	1.304%
18	8.147	2244	2257	2289	rBV2	342222	796125	100.00%	10.708%
19	8.289	2294	2301	2313	rVB9	10603	21489	2.70%	0.289%
20	8.903	2480	2492	2519	rBV	420182	715441	89.87%	9.623%
21	10.269	2906	2917	2933	rBV2	120395	195223	24.52%	2.626%
22	10.433	2959	2968	2977	rBV6	5237	9037	1.14%	0.122%
23	11.302	3226	3238	3260	rBV	376067	617872	77.61%	8.311%
24	11.588	3318	3327	3338	rBV5	8925	15937	2.00%	0.214%
25	11.681	3343	3356	3374	rBV2	340021	560825	70.44%	7.543%
26	12.404	3571	3581	3592	rBV5	15035	23421	2.94%	0.315%
27	13.562	3931	3941	3951	rVB2	19397	30985	3.89%	0.417%
28	14.874	4339	4349	4359	rVB4	8948	14005	1.76%	0.188%
29	15.424	4513	4520	4529	rVB2	13900	20748	2.61%	0.279%
30	16.546	4863	4869	4879	rVB6	7259	11637	1.46%	0.157%
31	16.848	4955	4963	4977	rBV2	21218	33716	4.24%	0.453%

Sum of corrected areas: 7434800

Data Path : W:\HPCHEM1\MSVOA V\DATA\VV050318\
Data File : VV005770.D
Acq On : 03 May 2018 18:44
Operator : SY/MD
Sample : J2551-08
Misc : 25.0 mL/MSVOA V/WATER
ALS Vial : 1 Sample Multiplier: 1

Quant Method : W:\HPCHEM1\MSVOA V\METHOD\SOMVTR043018WMA.M
Quant Title : TRACE VOA SOM01.0

TIC Library : C:\DATABASE\NIST11.L
TIC Integration Parameters: LSCINT.P



Data Path : W:\HPCHEM1\MSVOA_V\DATA\VV050318\
Data File : VV005770.D
Acq On : 03 May 2018 18:44
Operator : SY/MD
Sample : J2551-08
Misc : 25.0 mL/MSVOA_V/WATER
ALS Vial : 1 Sample Multiplier: 1

Quant Method : W:\HPCHEM1\MSVOA_V\METHOD\SOMVTR043018WMA.M
Quant Title : TRACE VOA SOM01.0

TIC Library : C:\DATABASE\NIST11.L
TIC Integration Parameters: LSCINT.P

No Library Search Compounds Detected

Data Path : W:\HPCHEM1\MSVOA_V\DATA\VV050318\
Data File : VV005770.D
Acq On : 03 May 2018 18:44
Operator : SY/MD
Sample : J2551-08
Misc : 25.0 mL/MSVOA_V/WATER
ALS Vial : 1 Sample Multiplier: 1

Quant Method : W:\HPCHEM1\MSVOA_V\METHOD\SOMVTR043018WMA.M
Quant Title : TRACE VOA SOM01.0

TIC Library : C:\DATABASE\NIST11.L
TIC Integration Parameters: LSCINT.P

TIC Top Hit name	RT	EstConc	Units	Response	--Internal Standard--			
					#	RT	Resp	Conc
